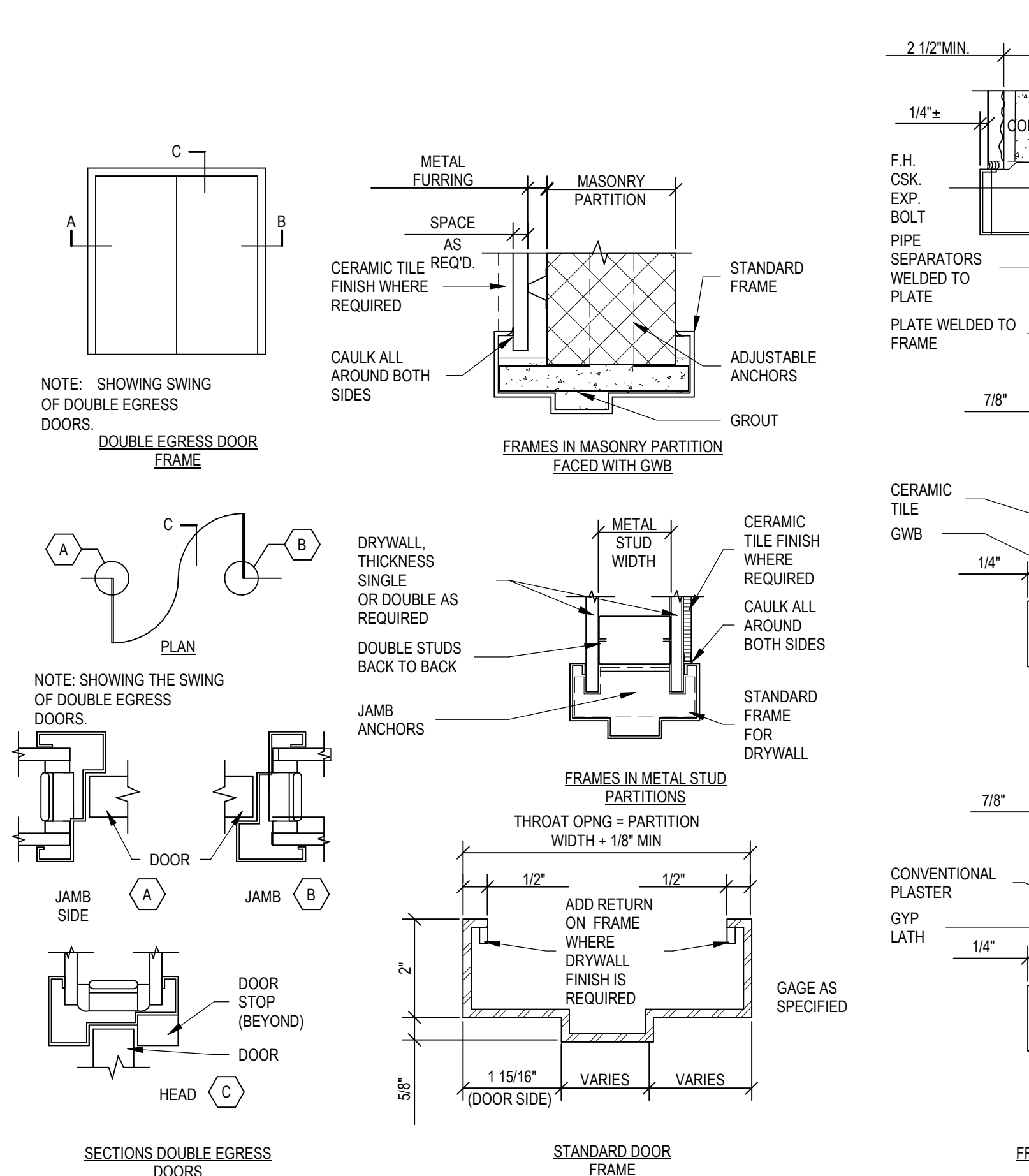
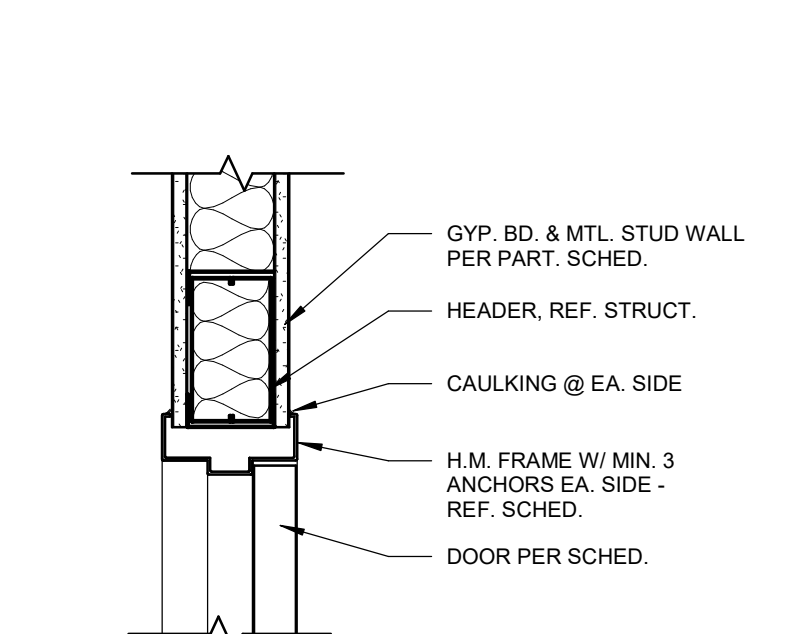


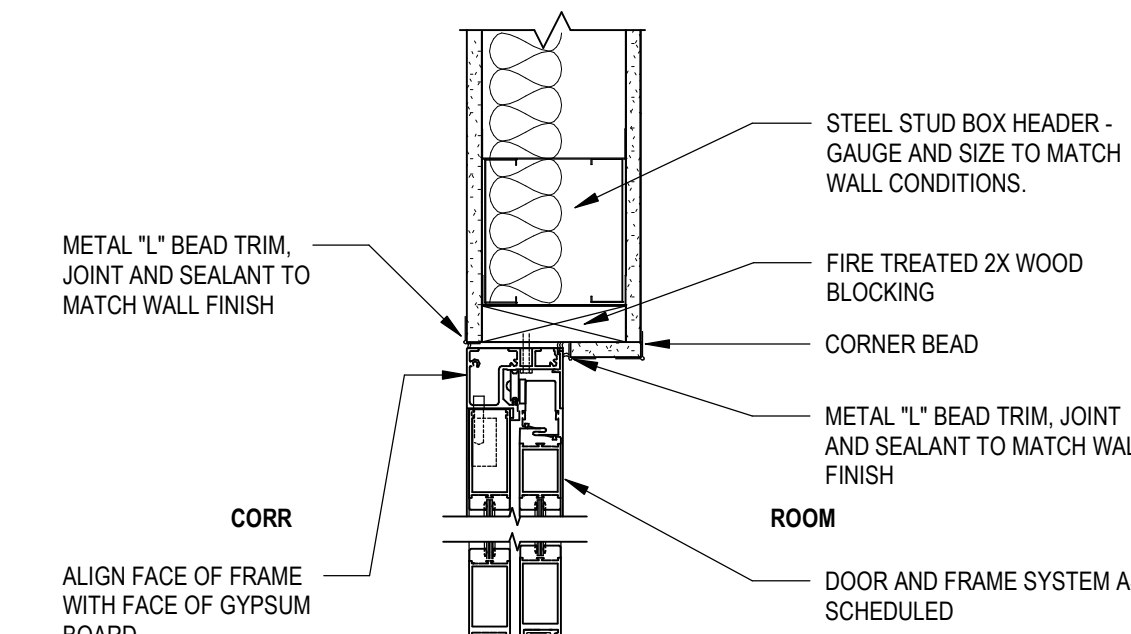
D1 081113-01 PARTITION FRAMING FOR DOORS 1/2" = 1'-0"



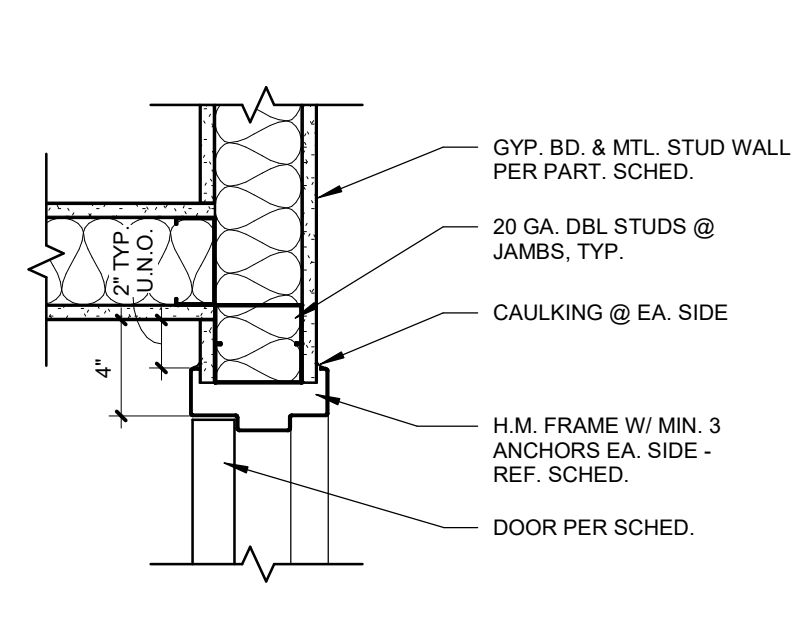
F2 081113-02 INTERIOR DOOR FRAMES



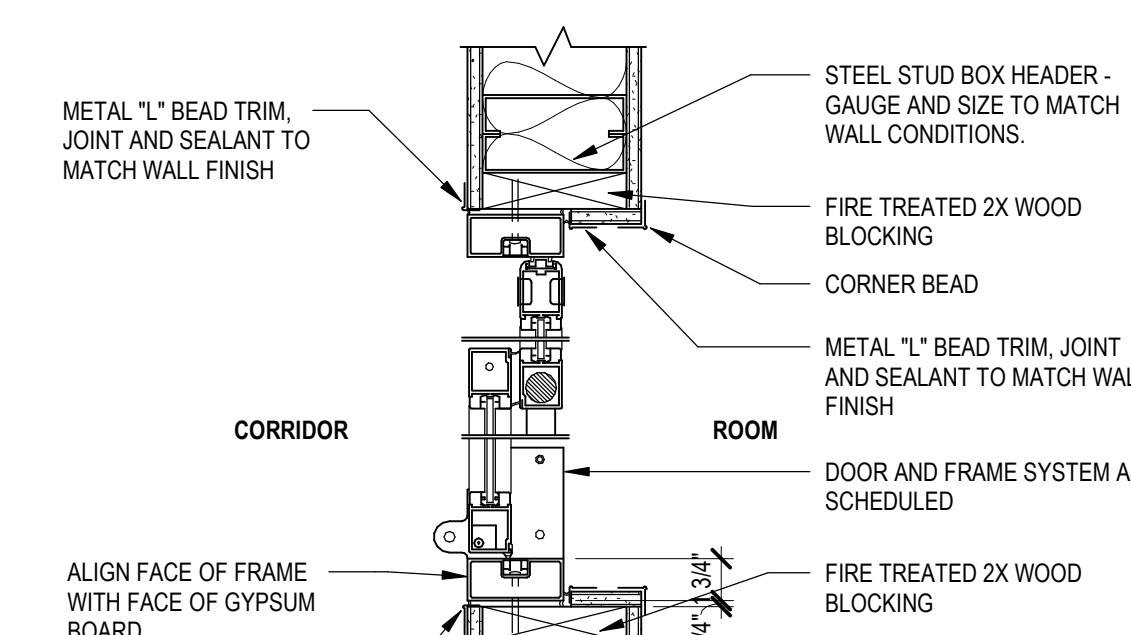
A4 HM DOOR (HEAD) 1 1/2" = 1'-0"



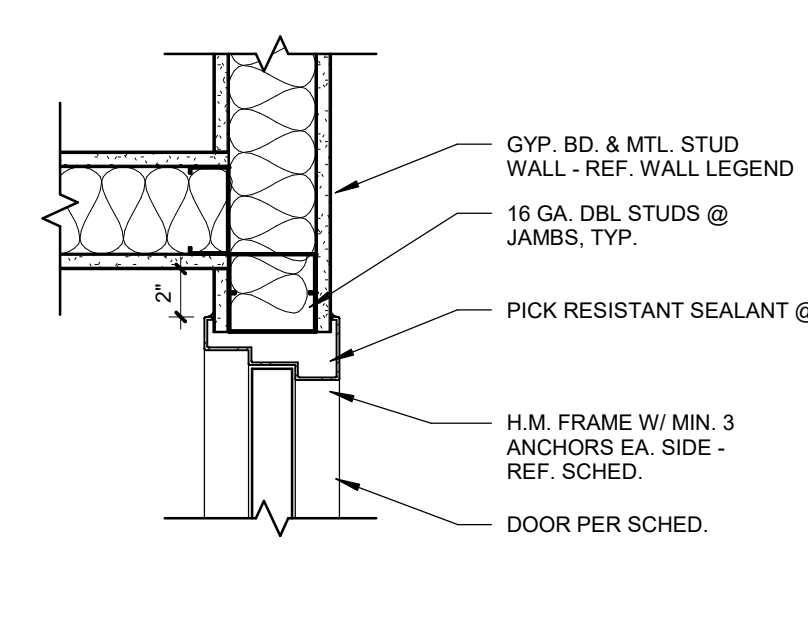
A6 DOOR - INT ICU/CCU HEAD 1 1/2" = 1'-0"



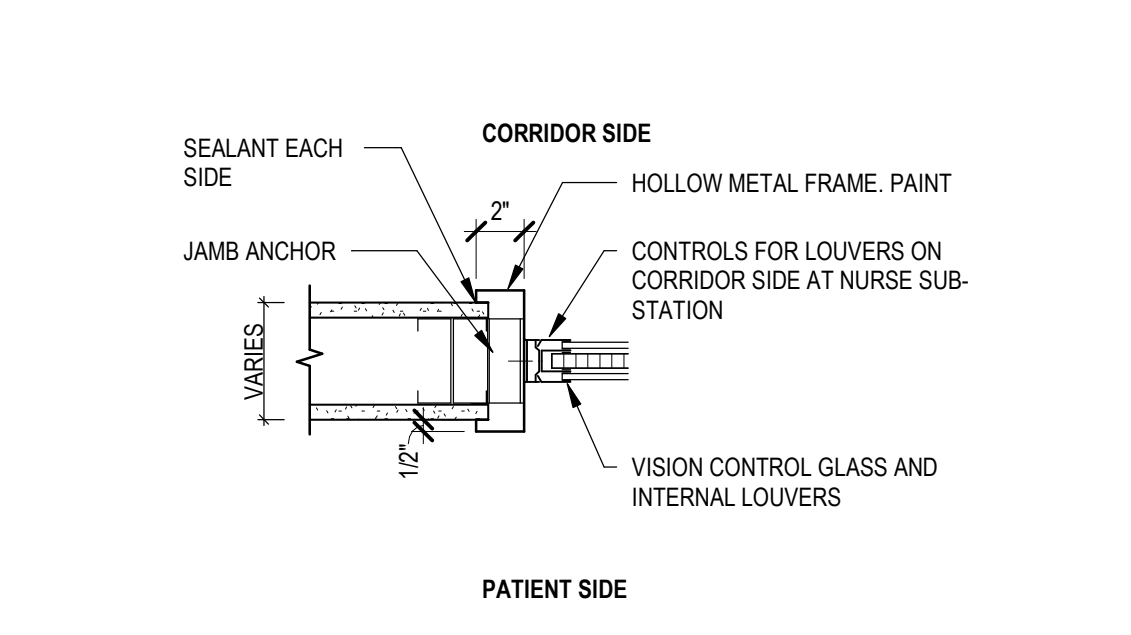
C4 HM DOOR (JAMB) 1 1/2" = 1'-0"



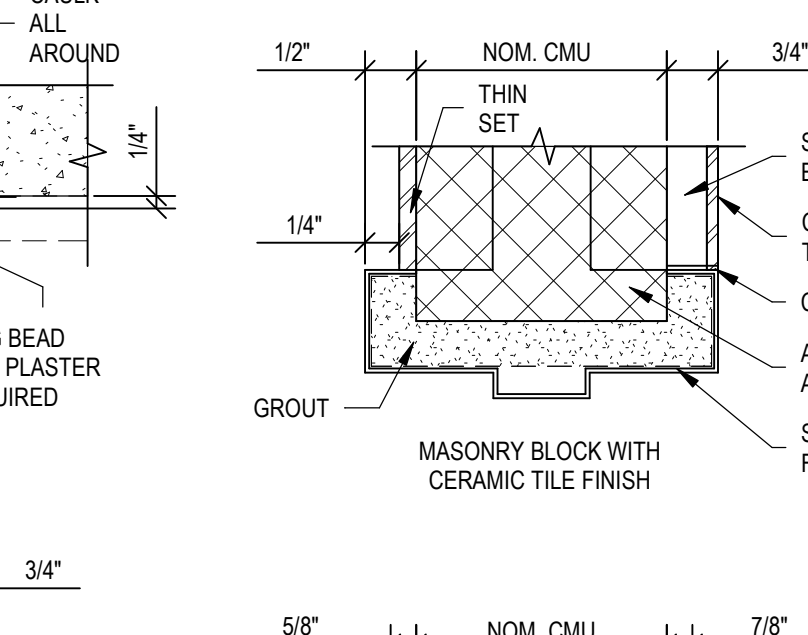
C6 DOOR - INT ICU/CCU JAMB 1 1/2" = 1'-0"



D4 DBL EGRESS HM DOOR (JAMB) 1 1/2" = 1'-0"

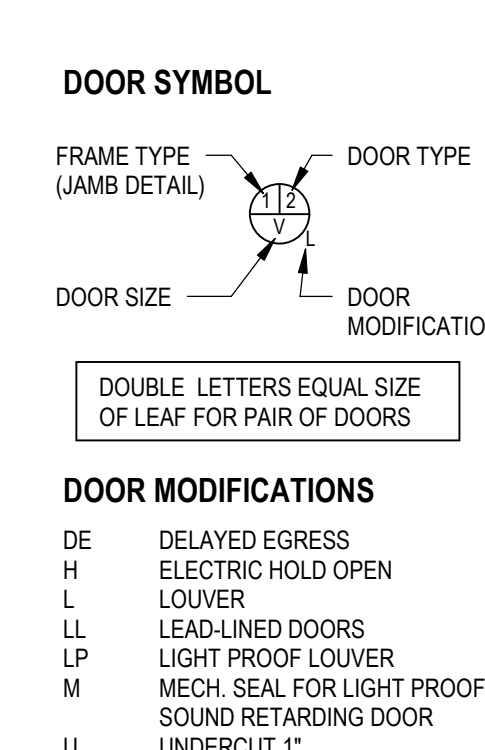


D6 WDW - INT JAMB W/BLINDS 1 1/2" = 1'-0"



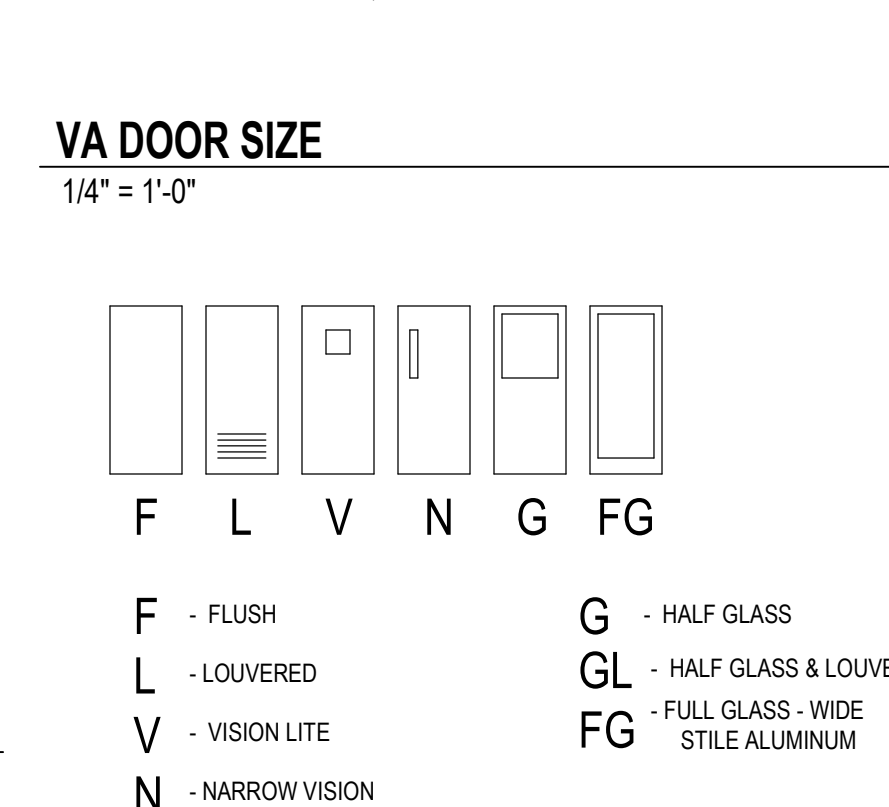
E6 DOOR - INT JAMB W/BLINDS 1 1/2" = 1'-0"

DOOR SIZES table with columns for MK, WIDTH, HEIGHT, and door type codes (A-M).

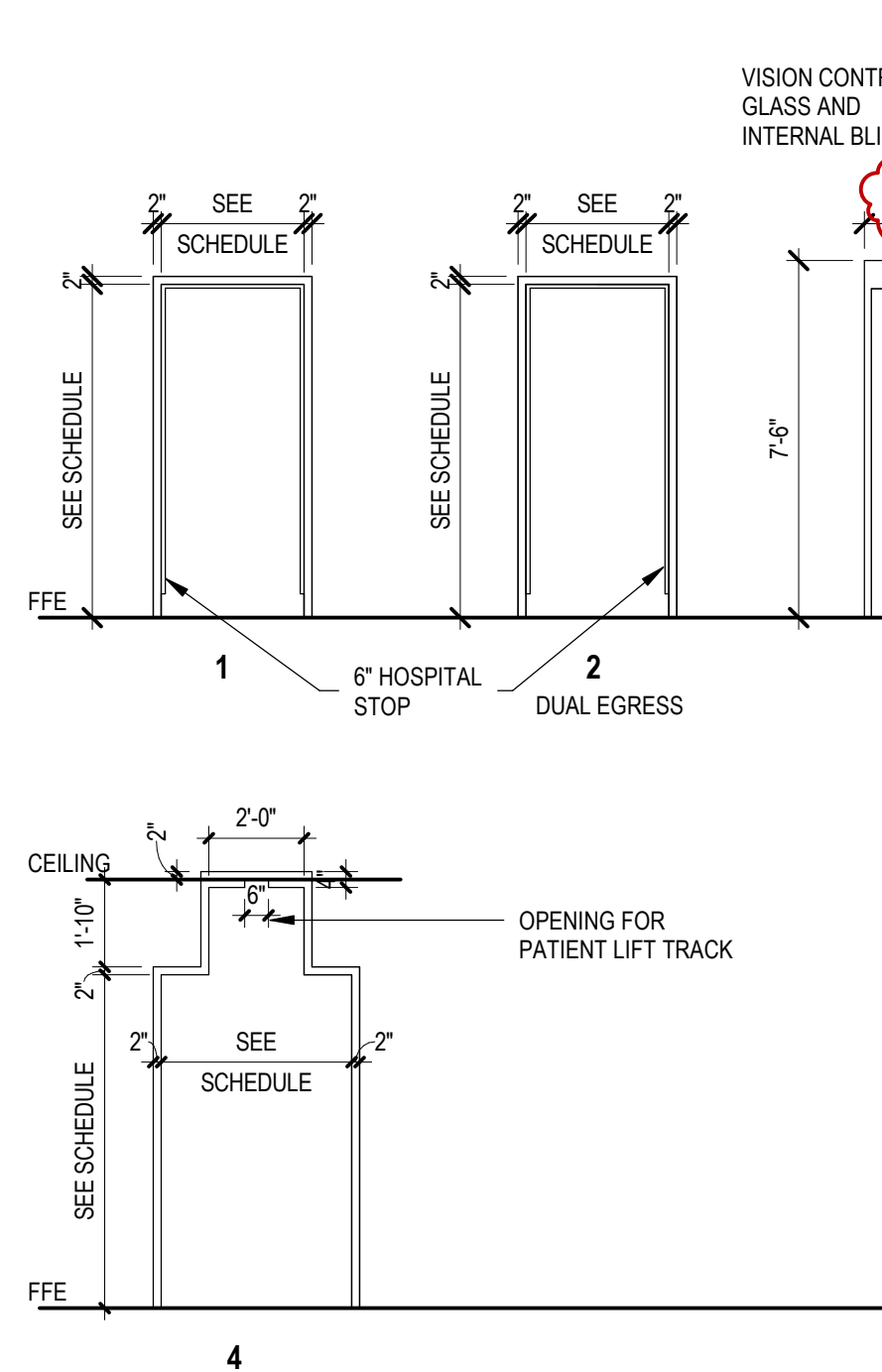


NOTES: 1. ALL DOORS SHALL BE FLUSH - 1/32" THICK UNLESS NOTED OTHERWISE. 2. TOP & SIDE RAILS SHALL BE 9" MIN. BOTTOM RAILS SHALL BE 12" MIN.

VA DOOR SIZE 1/4" = 1'-0"



DOOR FRAME TYPES 1/4" = 1'-0"



DOOR SCHEDULE table with columns for Door #, Size, Type, Material, Panel Type, Glazing, Frame, Fire Rating, and Remarks. Includes handwritten annotations and red circles around specific entries.

GLAZING LEGEND and DOOR SCHEDULE REMARKS. Includes notes on hardware to match existing and door/frame paint requirements.

CONSULTANTS section listing Structural, Mechanical/Electrical/Plumbing, and other roles with company names like WPE and Albertson Engineering.

ARCHITECT OF RECORD section listing Stone Group Architects, Inc. with address and contact information for Todd Stone, AIA.

Office of Construction and Facilities Management, U.S. Department of Veterans Affairs stamp and logo.

Drawing Title: DOOR & WINDOW SCHEDULE AND DETAILS. Includes an Approved stamp.

Phase: CONSTRUCTION DOCUMENTS. Includes Fully Sprinklered notation.

Project Title: RENOVATE AND CONSOLIDATE INPATIENT FUNCTIONS. Includes location (Fort Meade, South Dakota) and drawing number AE01.

Vertical scale markers on the left side of the page, ranging from 0 to 16 feet.

Vertical scale markers on the right side of the page, ranging from 0 to 16 feet.