



DEPARTMENT OF VETERANS AFFAIRS

FORT MEADE, SD VA MEDICAL CENTER

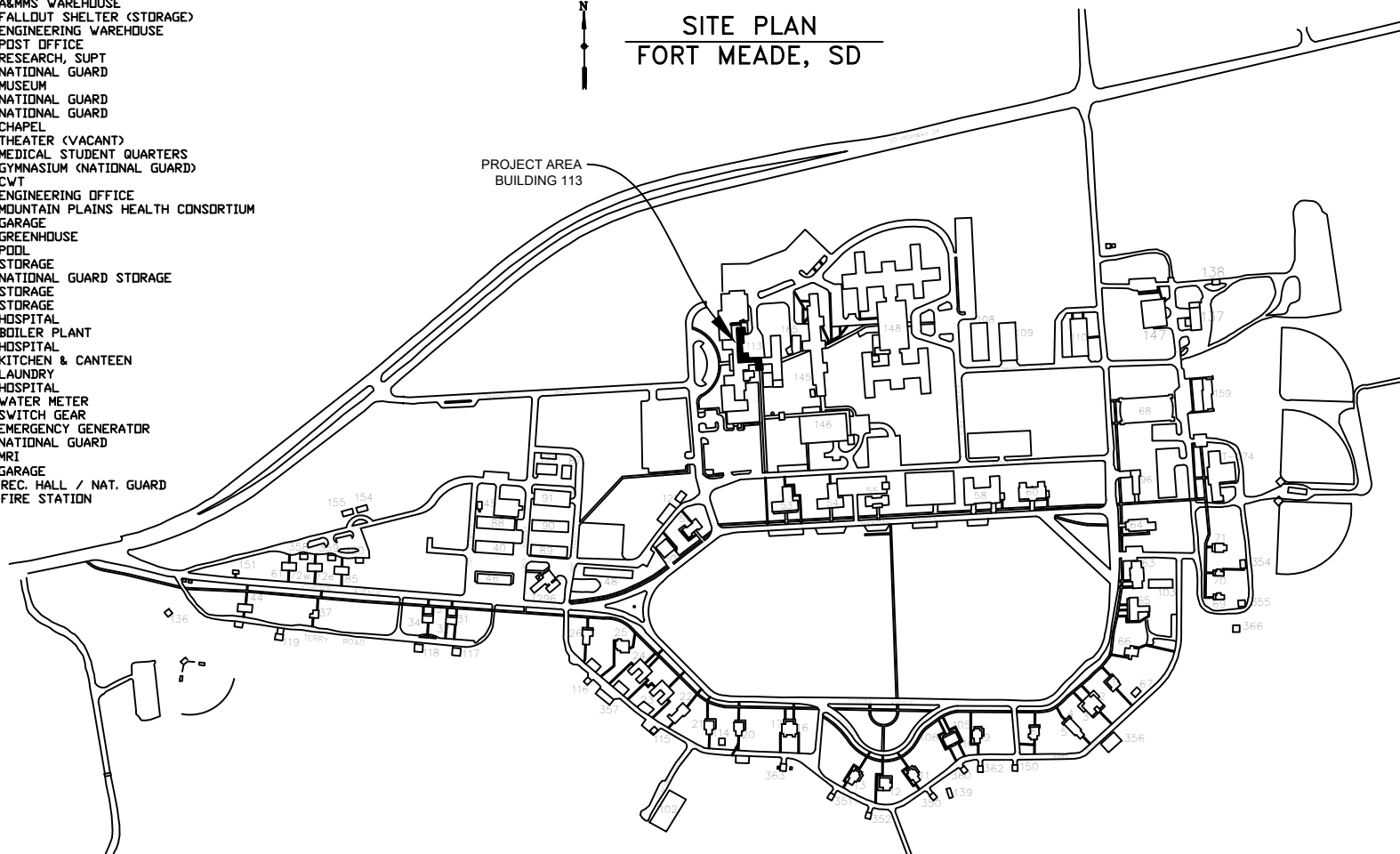
REPLACE BUILDING 113 STEAM LINE

PROJECT NO.: 568-21-104

DRAWING INDEX		
DRAWING NUMBER	TITLE	SHEET NUMBER
G1	SITE LOCATION PLAN AND DRAWING INDEX	1 OF 10
G2	LIFE SAFETY PLAN	2 OF 10
P000	GENERAL NOTES	3 OF 10
P001	PIPING TUNNEL PLAN	4 OF 10
P002	TEMPORARY PIPING PLAN	5 OF 10
P003	FLOOR ACCESS PLAN	6 OF 10
P100	PIPING REPLACEMENT PLAN	7 OF 10
P200	TIE-IN PLAN	8 OF 10
P201	2" & CONDENSATE DEMO	9 OF 10
P300	DETAILS	10 OF 10

- 40 CARPENTER & PAINT SHOP
- 46 A&MS WAREHOUSE
- 47 FALLOUT SHELTER (STORAGE)
- 48 ENGINEERING WAREHOUSE
- 50 POST OFFICE
- 53 RESEARCH, SUPT
- 54 NATIONAL GUARD
- 55 MUSEUM
- 58 NATIONAL GUARD
- 60 NATIONAL GUARD
- 63 CHAPEL
- 64 THEATER (VACANT)
- 65 MEDICAL STUDENT QUARTERS
- 68 GYMNASIUM (NATIONAL GUARD)
- 88 CWT
- 89 ENGINEERING OFFICE
- 90 MOUNTAIN PLAINS HEALTH CONSORTIUM
- 91 GARAGE
- 96 GREENHOUSE
- 102 PDIOL
- 103 STORAGE
- 108 NATIONAL GUARD STORAGE
- 109 STORAGE
- 110 STORAGE
- 113 HOSPITAL
- 137 BOILER PLANT
- 145 HOSPITAL
- 146 KITCHEN & CANTEEN
- 147 LAUNDRY
- 148 HOSPITAL
- 151 WATER METER
- 154 SWITCH GEAR
- 155 EMERGENCY GENERATOR
- 159 NATIONAL GUARD
- 165 MRI
- T171 GARAGE
- T274 REC. HALL / NAT. GUARD
- T296 FIRE STATION

SITE PLAN
FORT MEADE, SD



PROJECT DESCRIPTION, 568-21-104, REPLACE BUILDING 113 STEAM LINE:









1. THE SCOPE OF THIS PROJECT CONSISTS OF REPLACEMENT OF AN EXISTING STEEL MEDIUM PRESSURE STEAM LINE LOCATED WITHIN STEAM TUNNELS BELOW BUILDING 113 ON THE FORT MEADE, SD CAMPUS.
2. ALL WORK ACTIVITIES ARE TO BE PLANNED AND SCHEDULED IN ADVANCE WITH VA FACILITIES STAFF TO MINIMIZE DISRUPTION OF NORMAL MEDICAL CENTER ACTIVITIES. UNLESS SPECIFICALLY AUTHORIZED BY VA STAFF, ALL WORK WILL BE ACCOMPLISHED DURING SHIFT HOURS, BETWEEN 7:00 AM AND 5:00 PM, MONDAY THROUGH FRIDAY. DAY SHIFT WORK ON WEEKENDS AND HOLIDAYS MAY ALSO BE PERMITTED IN SOME AREAS WITH PRIOR APPROVAL. WORK AREAS ARE TO BE CLEANED UP AND OPEN FOR TRAFFIC BY 5:00 PM EACH DAY.
3. THE CONTRACTOR SHALL PROVIDE AND INSTALL THE NECESSARY REPLACEMENT PIPING, FITTINGS, AND NECESSARY TIE-INS TO SUCCESSFULLY REPLACE AGING PIPING WHILE MAINTAINING 10 LB STEAM SERVICE TO THE HOSPITAL.
4. ALL STEAM SHUT DOWNS SHALL OCCUR BETWEEN 5:00 P.M. AND 7:00 A.M. WEEKDAYS OR 7:00 A.M. AND 5:00 P.M. ON WEEKENDS.
5. ALL WORK IS TO BE COMPLETED IN COMPLIANCE WITH GENERAL REQUIREMENTS, AND SECTION 01011, MEDICAL CENTER REQUIREMENTS. STRICT CONTROL OF DUST, FUMES, SMOKE AND DEBRIS IS REQUIRED AT ALL TIMES.
6. MATERIALS LISTED WITHIN THIS PLAN ARE TO DESCRIBE ACCEPTABLE LEVELS OF QUALITY. APPROVAL OF ANY SUBSTITUTIONS WILL BE MADE ONLY WHEN SUBMITTED THROUGH THE PROPER SUBMITTAL PROCESS AND MEET OR EXCEED REQUIREMENTS.
7. CONTRACTOR SHALL FIELD VERIFY ALL EXISTING CONDITIONS, DIMENSIONS, AND QUANTITIES PRIOR TO ANY CONSTRUCTION ACTIVITIES.
8. THE CONTRACTOR SHALL BE RESPONSIBLE FOR MOVING AND RE-INSTALLING ALL NON PERMANENT ITEMS, TO INCLUDE BUT NOT LIMITED TO FURNITURE, FILE CABINETS, APPLIANCES, AND ETC. WITHIN THE CONSTRUCTION LIMITS. THE VA IS RESPONSIBLE FOR MOVING ALL PERSONAL ITEMS.
9. THE CONTRACTOR SHALL FOLLOW ALL MANUFACTURER'S RECOMMENDATIONS FOR PREPARATION AND INSTALLATION OF ALL NEW MATERIALS.
10. THE CONTRACTOR SHALL REPAIR ANY DAMAGE THAT IS CAUSED DURING CONSTRUCTION, INCLUDING TOUCH-UP PAINTING. THE VA WILL MIX AND PROVIDE THE PAINT REQUIRED FOR TOUCH-UP PAINTING NEEDS.
11. THE CONTRACTOR SHALL SECURELY BARRICADE AREAS IN THE WORK ZONE THAT ARE DEEMED UNSAFE TO THE STAFF AND PUBLIC.

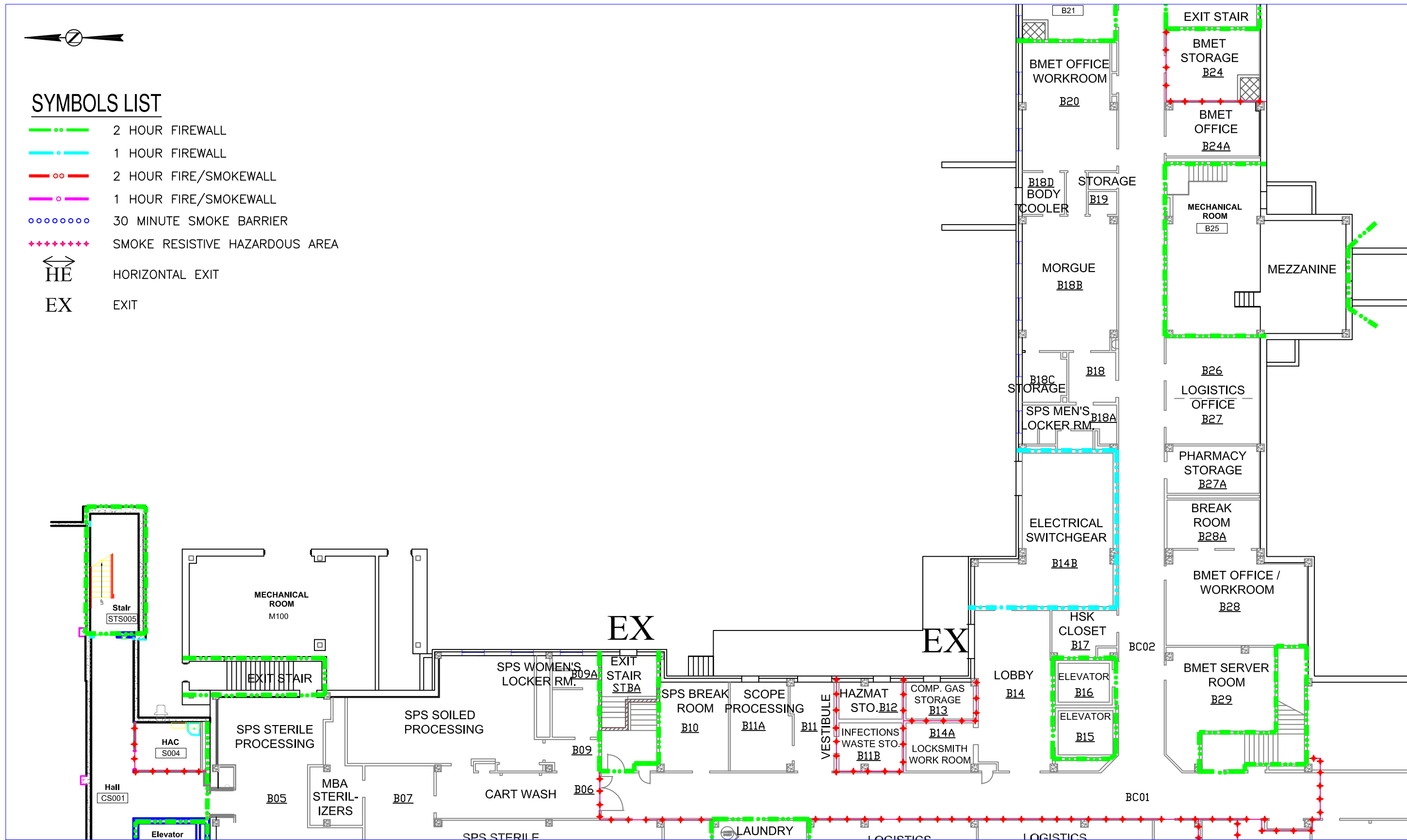
Revisions	Date

Drawing Title SITE LOCATION AND DRAWING INDEX		Project Title REPLACE BUILDING 113 STEAM LINE		Date 4/20/2022
Approved: Division Chief		Building Number 113	Checked KW	Drawn KF
Approved: Service Director		Location FT MEADE, SD		DRAWING NO. G1 SHEET 1 OF 10

Department of Veterans Affairs

SYMBOLS LIST

-  2 HOUR FIREWALL
-  1 HOUR FIREWALL
-  2 HOUR FIRE/SMOKEWALL
-  1 HOUR FIRE/SMOKEWALL
-  30 MINUTE SMOKE BARRIER
-  SMOKE RESISTIVE HAZARDOUS AREA
-  HORIZONTAL EXIT
-  EXIT



FULLY SPRINKLERED

Revisions	Date

Drawing Title LIFE SAFETY PLAN		Project Title REPLACE BUILDING 113 STEAM LINE		Date 4/20/2022
Approved Division Chief		Building Number 113	Checked KW	Drawn KF
Approved Service Director		Location FT MEADE, SD		Project No. 568-21-104
				DRAWING NO. G2
				Fig. 2 of 10

PIPING RENOVATION GENERAL NOTES

- A.- HVAC CONTRACTOR TO EVACUATE AND DISPOSE OF ALL COOLED STEAM USED IN SYSTEMS BEING DEMOLISHED.
- B.- HVAC CONTRACTOR TO DEMOLISH ALL SUPPORTS NOTED. PROVIDE NEW SUPPORTS WHERE NEEDED.
- C.- NEW PENETRATIONS IN EXISTING CMU WALLS ARE TO BE CORE DRILLED FOR PIPING. CONTRACTOR IS RESPONSIBLE FOR SEALING AND PATCHING ALL OPENINGS. FIRESTOP ANY OPENINGS IN RATED ASSEMBLIES.
- D.- DEMOLISH ALL PIPING, VALVES, CONTROLS, WIRING, THERMOSTATS, DUCTWORK, AIR DEVICES, MOTORS, END DEVICES, ETC. AS REQUIRED TO PERFORM NEW WORK. ABANDONED ITEMS ARE TO BE REMOVED UNLESS OTHERWISE INDICATED.
- E.- FIELD COORDINATE LOCATION OF ALL WORK. PERFORM ALL REMOVAL AND RELOCATION OF EXISTING ITEMS REQUIRED FOR THE NEW WORK INSTALLATION. LEAVE ALL EXISTING SYSTEMS-TO-REMAIN CONTINUOUS AND FUNCTIONAL.
- F.- PROTECT ALL MECHANICAL EQUIPMENT AGAINST DAMAGE AND PAY THE COST OF REPLACING AND REPAIRING EQUIPMENT MADE NECESSARY BY FAILURE TO PROVIDE SUITABLE PROTECTION.
- G.- CONTRACTOR IS SOLELY RESPONSIBLE FOR PURCHASING EQUIPMENT AND MATERIALS IN SUCH KNOCK-DOWN CONDITION THAT THEY WILL PASS THROUGH BUILDING OPENINGS OR SUCH OPENINGS AS MAY OCCUR INCIDENTALLY DURING BUILDING CONSTRUCTION. COORDINATE THIS EFFORT WITH OWNER.
- J.- RE-INSULATE EXISTING PIPING OR DUCTWORK WHERE MISSING OR DAMAGED INSULATION OCCURRED AS A RESULT OF THIS WORK.
- H.- WHERE PIPING IS TO BE REMOVED AND NOT RE-CONNECTED, PERMANENTLY CAP, SEAL, AND INSULATE EXISTING TAP UNLESS LINE IS ABANDONED. WHERE TAP IS TO BE USED FOR NEW WORK, PROTECT AND PREPARE FOR RE-CONNECTION.
- I.- THE CONTRACTOR SHALL REVIEW THE CONTRACT DRAWINGS PRIOR TO CONSTRUCTION. THE CONTRACTOR SHALL INCORPORATE ADJUSTMENTS OF EXISTING-TO-REMAIN EQUIPMENT WHERE MODIFICATIONS MAY BE REQUIRED.
- J.- THE FACILITY SHALL REMAIN OCCUPIED DURING THE CONSTRUCTION PROCESS. CONTRACTORS SHALL WORK WITH THE FACILITY TO DETERMINE AN APPROPRIATE WORK SCHEDULE.
- K.- ALL RENOVATED AND NEW PIPING SHALL BE PRESSURE TESTED TO THE SPECIFICATIONS PRIOR TO FINAL ACCEPTANCE.
- L.- INFORMATION ON EXISTING EQUIPMENT AND SYSTEMS HAVE BEEN OBTAINED FROM EXISTING DESIGN DRAWINGS, RENOVATION DRAWINGS, AND FIELD SURVEY. THE CONTRACTOR SHALL VERIFY ALL EXISTING CONDITIONS PRIOR TO ANY WORK.
- M.- ALL CUTTING/WELDING WORK WITHIN THE TUNNEL SHALL CONFORM TO OSHA STANDARDS AND FOLLOW 29 CFR 1910.46 REQUIREMENTS.

PIPING GENERAL NOTES

- A.- PROVIDE ALL MATERIALS AND EQUIPMENT AND PERFORM ALL LABOR REQUIRED TO INSTALL COMPLETE AND OPERABLE MECHANICAL SYSTEMS AS INDICATED ON THE DRAWINGS AND AS SPECIFIED.
- B.- ALL WORK SHALL BE INSTALLED ACCORDING TO THE LATEST LOCAL, STATE AND NATIONAL CODES. ALL DUCTWORK SHALL BE INSTALLED ACCORDING TO THE LATEST ASHRAE RECOMMENDATIONS AND SMACNA INSTALLATION MANUALS.
- C.- CONTRACT DOCUMENT DRAWINGS FOR MECHANICAL WORK ARE DIAGRAMATIC AND ARE INTENDED TO CONVEY SCOPE AND GENERAL ARRANGEMENT ONLY.
- D.- IT IS ANTICIPATED THAT NO ASBESTOS-CONTAINING MATERIAL IS ASSOCIATED WITH THIS PROJECT. HOWEVER, IN THE EVENT OF A POTENTIAL FIND, VA WILL TEST AND ABATE AT NO COST TO THE CONTRACTOR. NO DISTURBANCE SHALL BE DONE TO THE AREA UNTIL TEST RESULTS HAVE BEEN RECEIVED AND AREA DEEMED SAFE BY THE VA.
- E.- MAINTAIN A MINIMUM OF 6'-8" CLEARANCE TO UNDERSIDE OF PIPES, DUCTS, CONDUITS, SUSPENDED EQUIPMENT, ETC., THROUGHOUT ACCESS ROUTES IN MECHANICAL ROOMS.
- F.- CAULK SPACE BETWEEN SLEEVES, DUCTS AND PIPES WHERE DUCTS AND PIPES PASS THROUGH WALLS. CAULKING SHALL BE AIRTIGHT.
- G.- ALL TESTS SHALL BE COMPLETED BEFORE ANY MECHANICAL EQUIPMENT OR PIPING INSULATION IS APPLIED.
- H.- COORDINATE ALL EQUIPMENT CONNECTIONS WITH MANUFACTURERS' CERTIFIED DRAWINGS. COORDINATE AND PROVIDE ALL DUCT AND PIPING TRANSITIONS REQUIRED FOR FINAL EQUIPMENT CONNECTIONS TO FURNISHED EQUIPMENT. FIELD VERIFY AND COORDINATE ALL PIPING DIMENSIONS PRIOR TO FABRICATION.
- I.- ALL MISCELLANEOUS STEEL REQUIRED TO ENSURE PROPER INSTALLATION AND AS SHOWN IN DETAILS FOR PIPING AND EQUIPMENT (UNLESS NOTED OTHERWISE) SHALL BE FURNISHED AND INSTALLED BY THE CONTRACTOR.
- J.- ALL PIPING SUPPORTED FROM STRUCTURAL STEEL SHALL BE COORDINATED WITH GENERAL CONTRACTOR. ALL ATTACHMENTS TO STEEL BAR JOISTS, TRUSSES OR JOIST GIRDERS SHALL BE AT PANEL POINTS. PROVIDE BEAM CLAMPS MEETING MSS STANDARDS. WELDING TO STRUCTURAL MEMBERS SHALL NOT BE PERMITTED. THE USE OF C-CLAMPS SHALL NOT BE PERMITTED.
- K.- UNIONS AND/OR FLANGES SHALL BE INSTALLED AT EACH PIECE OF EQUIPMENT, IN BYPASSES, AND IN LONG PIPING RUNS (100 FEET OR MORE) TO PERMIT DISASSEMBLY FOR ALTERATIONS AND REPAIRS.
- L.- ALL PIPING SHALL GRADE TO LOW POINTS. PROVIDE HOSE END DRAIN VALVES AT THE BOTTOM OF ALL RISERS AND LOW POINTS.
- M.- INSTALL PIPING SO THAT ALL VALVES, STRAINERS, UNIONS, TRAPS, FLANGES AND OTHER APPURTENANCES REQUIRING ACCESS ARE ACCESSIBLE.
- N.- OFFSETS IN PIPING AROUND OBSTRUCTIONS SHALL BE PROVIDED AT NO ADDITIONAL COST TO THE OWNER.
- O.- CERTAIN ITEMS SUCH AS RISES AND DROPS IN PIPING, ETC. ARE INDICATED ON THE CONTRACT DOCUMENT DRAWINGS FOR CLARITY FOR A SPECIFIC LOCATION REQUIREMENT AND SHALL NOT BE INTERPRETED AS THE EXTENT OF THE REQUIREMENTS FOR THESE ITEMS.
- P.- ALL REFERENCES TO PIPING DEMO INCLUDE INSULATION, FITTINGS, HANGERS, AND SUPPORTS UNLESS OTHERWISE NOTED IN THE DRAWINGS.
- Q.- ALL NEW PERMANENT VALVES AND STEAM DRIPS SHALL INCLUDE THE INSTALLATION OF REMOVABLE INSULATION JACKETS.

HVAC LEGEND (ALL MAY NOT APPLY)

	SPACE TEMPERATURE SENSOR - MOUNTING HEIGHT 48"		PRESSURE GAUGE WITH SHUTOFF COCK SNUBBER
	SPACE HUMIDISTAT		REQUIRED FOR STEAM SERVICE THERMOMETER
	SPACE MOTION SENSOR		WATER TEMPERATURE SENSOR
	THERMOSTAT ELECTRIC - MOUNTING HEIGHT 48"		VARIABLE SPEED PUMPING DIFFERENTIAL PRESSURE SENSOR
	CARBON DIOXIDE SENSOR		METER
	SPACE PRESSURE SENSOR		FLEXIBLE CONNECTOR
	NEW EQUIPMENT REFERENCE SYMBOL		UNION
	NOTE SYMBOL		CLEAN OUT
	ROOM NUMBER		STRAINER WITH BLOW DOWN
	APPROXIMATE ELEVATION FROM FLOOR TO BOTTOM OF DUCT, PIPE OR EQUIPMENT ITEM		SHUTOFF/ISOLATION VALVE
	SECTION "A" DESIGNATION, SHOWN ON SHEET M1-1		COMBINATION BALANCING/SHUTOFF VALVE
	DETAIL REFERENCE SYMBOL, DETAIL "A" SHOWN ON SHEET M4		CHECK VALVE
	CEILING MOUNTED AIR DEVICE, S1- AIR DEVICE DESIGNATION. REFER TO SCHEDULE. 8"-NECK SIZE, 250-REQUIRED CFM, DUCT SIZE SAME AS NECK SIZE UNLESS INDICATED OTHERWISE		THREE WAY CONTROL VALVE
	CEILING MOUNTED AIR DEVICE, R1- AIR DEVICE DESIGNATION. REFER TO SCHEDULE. 22"x22" NECK SIZE, 1,200 REQUIRED CFM. DUCT SIZE SAME AS NECK SIZE UNLESS INDICATED OTHERWISE		TWO WAY CONTROL VALVE
	2-WAY SUPPLY DIFFUSER		TRIPLE DUTY VALVE
	WALL OR DUCT MOUNTED AIR DEVICE, S1 AIR DEVICE DESIGNATION. REFER TO SCHEDULE. 10"x6" NECK SIZE, 200-REQUIRED CFM, 7'-6" MOUNTING HEIGHT FROM FLOOR TO BOTTOM OF AIR DEVICE. BRANCH DUCT SIZE SAME AS NECK SIZE UNLESS INDICATED OTHERWISE		3/4" NPT PETES PLUG
	MANUAL BALANCING VOLUME DAMPER WITH LOCKING DEVICE		PRESSURE REDUCING VALVE
	1" DOOR UNDER CUT BY GENERAL CONTRACTOR		OS&Y VALVE
	NEW WORK		SOLENOID VALVE
	DUCT RISE IN DIRECTION OF AIR FLOW 45" OFFSET		GLOBE VALVE
	DUCT DROP IN DIRECTION OF AIR FLOW 45" OFFSET		PRESSURE RELIEF VALVE WITH INDICATED SETTING
	STAINLESS STEEL DUCTWORK (WET EXHAUST)		FILL VALVE
	DOUBLE WALL DUCT WITH 1" INSULATION PERFORATED LINER		BALL VALVE
	NON-METAL FABRIC DUCTWORK		BUTTERFLY VALVE
	FLEXIBLE DUCT CONNECTION		PLUG VALVE
	AIR TURNING VANES		CIRCUIT SETTER
	1" LINED TRANSFER AIR ASSEMBLY		NEEDLE VALVE
	FIRE DAMPER AND CONFIGURATION TYPE		AUTOMATIC FLOW CONTROL VALVE WITH SHUTOFF
	SMOKE DAMPER		FLOW CONTROL VALVE
	COMBINATION SMOKE/FIRE DAMPER AND CONFIGURATION TYPE		FLOW SWITCH
	MOTOR OPERATED DAMPER (OPPOSED)		VACUUM BREAKER
	MOTOR OPERATED DAMPER (PARALLEL)		PIPE FLANGE
	DUCT TEMPERATURE SENSOR		CONCENTRIC PIPE REDUCER
	DUCT HUMIDITY SENSOR		ECCENTRIC PIPE REDUCER
	DUCT HUMIDITY HIGH LIMIT SENSOR		VENTURI FLOW METER
	DUCT AIR FLOW SENSOR		PIPE CAP
	DUCT STATIC PRESSURE SENSOR		PIPE DROP
	MEDIUM PRESSURE CONICAL LOW LOSS DUCT TEE		PIPE RISE
	LOW PRESSURE BELL MOUTH WITH LOCKING QUADRANT DAMPER		PIPE TEE UP
	SUPPLY AND/OR OUTSIDE AIR DUCT DROP		PIPE TEE DOWN
	RETURN, EXHAUST AND/OR RELIEF AIR DROP		VALVE IN RISER
	SUPPLY AND/OR OUTSIDE AIR RISE		PIPE ANCHOR
	RETURN, EXHAUST AND/OR RELIEF AIR RISE		PIPE GUIDE
	SINGLE LINE DUCT TRANSITION		PIPE EXPANSION JOINT
	THERMOSTATIC AIR VENT		PRESSURE DIFFERENTIAL SWITCH WITH SHUTOFF COCK
	MANUAL AIR VENT WITH SHUTOFF COCK		PITCH DOWN
	AUTOMATIC AIR VENT WITH SHUTOFF COCK, VENT TO DRAIN		DIRECTION OF FLOW
			PRE ENGINEERED EXPANSION LOOP. SEE SPECIFICATIONS
			DRAIN PIPE
			CHILLED WATER RETURN
			CHILLED WATER SUPPLY
			HOT WATER RETURN
			HOT WATER SUPPLY
			MAKE UP WATER
			REFRIGERANT LIQUID
			REFRIGERANT HOT GAS BYPASS LINE
			REFRIGERANT DISCHARGE
			REFRIGERANT SUCTION

three inches = one foot
 one and one-half inches = one foot
 one inch = one foot
 three-quarters inch = one foot
 one-half inch = one foot
 three-eighths inch = one foot
 one-quarter inch = one foot
 one-eighth inch = one foot

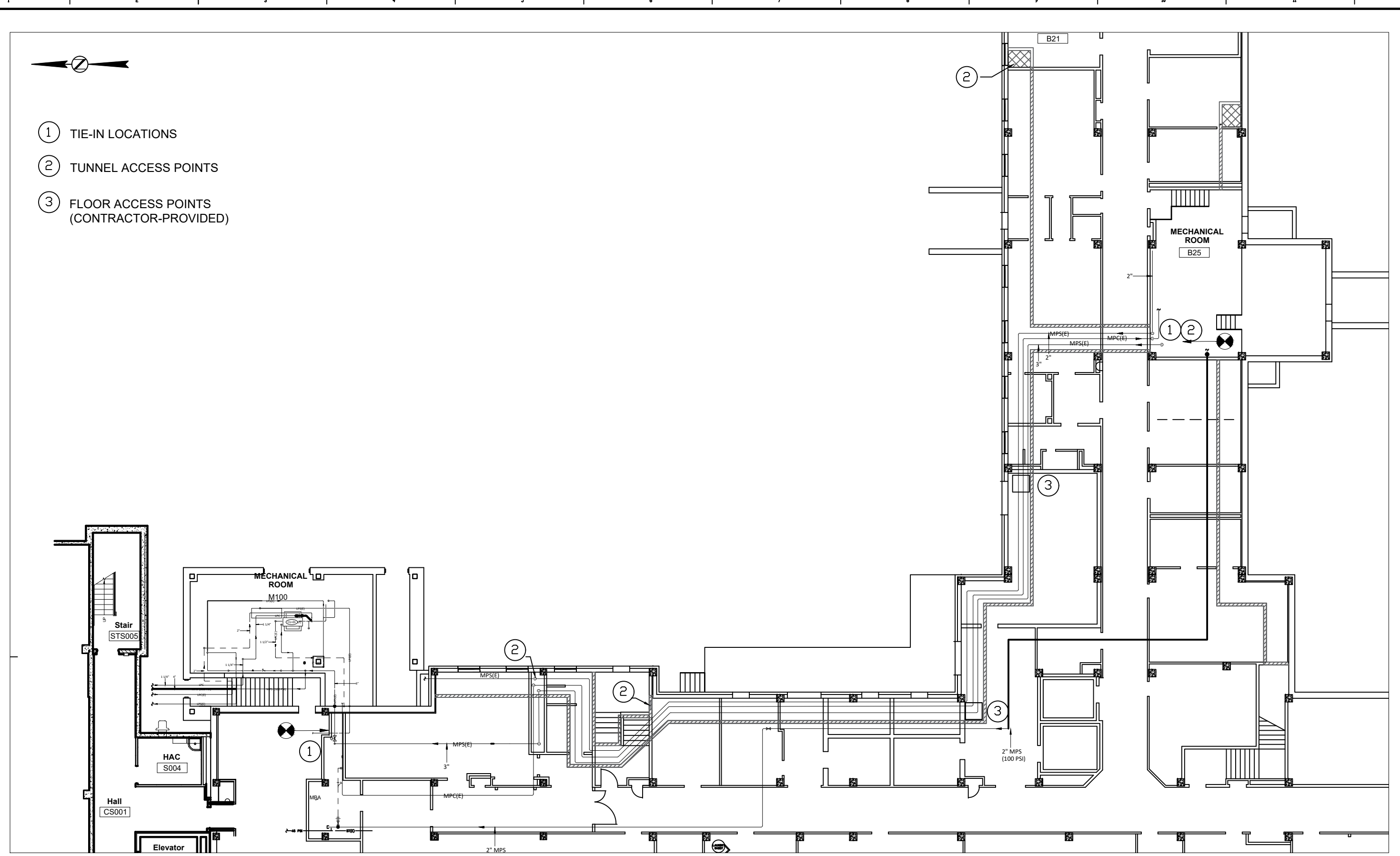
Revisions	Date

Drawing Title GENERAL NOTES	Project Title REPLACE BUILDING 113 STEAM LINE	Date 4/20/2022
Approved: Division Chief	Building Number 113	Checked KW
Approved: Service Director	Location FT MEADE, SD	Drawn KF
	Project No. 568-21-104	DRAWING NO. P000
		Page 3 of 10

Department of Veterans Affairs



- ① TIE-IN LOCATIONS
- ② TUNNEL ACCESS POINTS
- ③ FLOOR ACCESS POINTS (CONTRACTOR-PROVIDED)

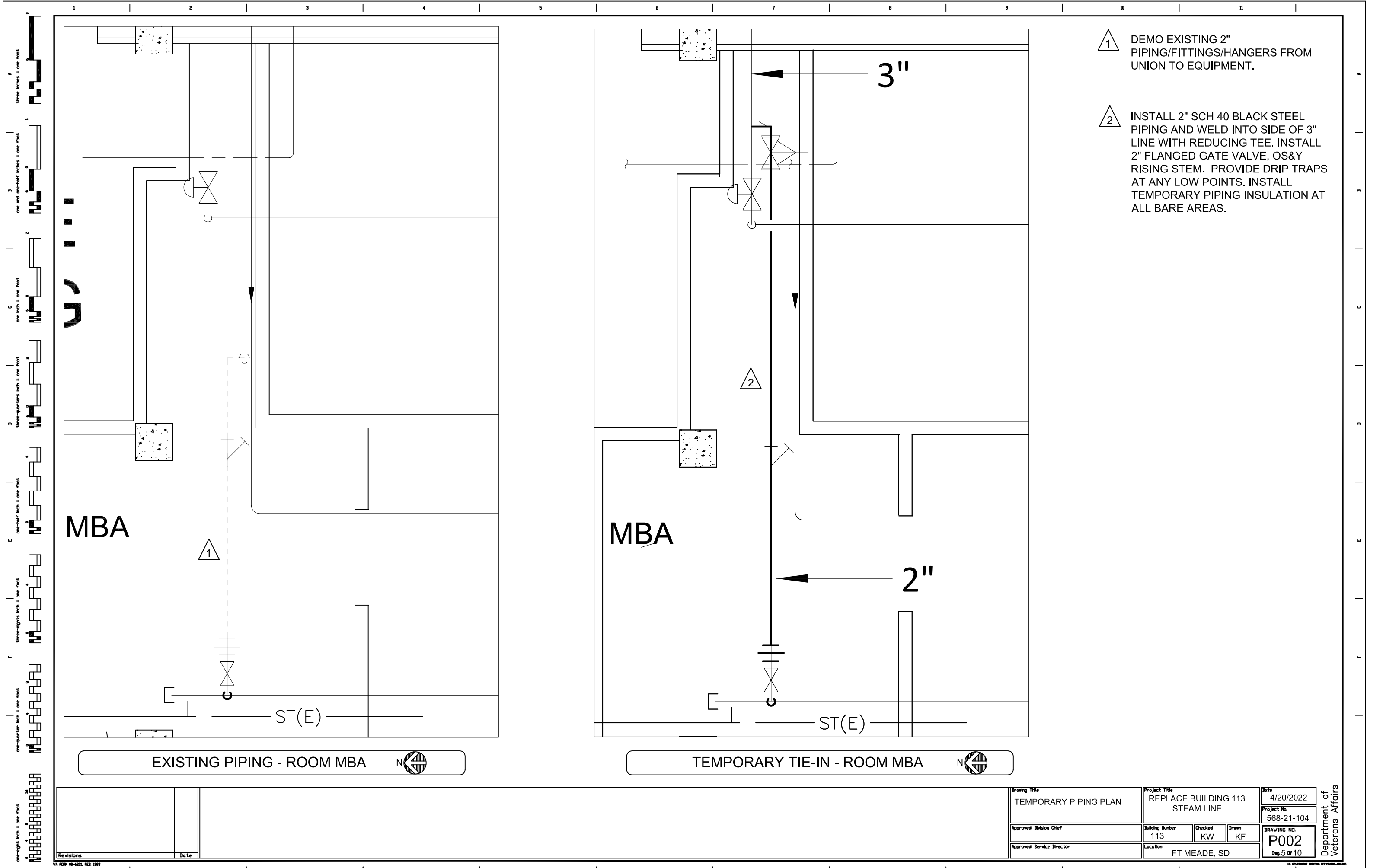


Scale indicators on the left margin:
A three inches = one foot
B one and one-half inches = one foot
C one inch = one foot
D three-quarters inch = one foot
E one-half inch = one foot
F three-eighths inch = one foot
one-quarter inch = one foot
one-eighth inch = one foot

Revisions	Date

Drawing Title PIPING TUNNEL PLAN	Project Title REPLACE BUILDING 113 STEAM LINE	Date 4/20/2022
Approved: Division Chief	Building Number 113	Checked KW
Approved: Service Director	Location FT MEADE, SD	Drawn KF
DRAWING NO. P001		Date 568-21-104
		Fig. 4 of 10

Department of Veterans Affairs



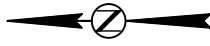
- 1 DEMO EXISTING 2" PIPING/FITTINGS/HANGERS FROM UNION TO EQUIPMENT.
- 2 INSTALL 2" SCH 40 BLACK STEEL PIPING AND WELD INTO SIDE OF 3" LINE WITH REDUCING TEE. INSTALL 2" FLANGED GATE VALVE, OS&Y RISING STEM. PROVIDE DRIP TRAPS AT ANY LOW POINTS. INSTALL TEMPORARY PIPING INSULATION AT ALL BARE AREAS.

A three inches = one foot
 B one and one-half inches = one foot
 C one inch = one foot
 D three-quarters inch = one foot
 E one-half inch = one foot
 F three-eighths inch = one foot
 G one-quarter inch = one foot
 H one-eighth inch = one foot

Department of Veterans Affairs

Drawing Title		Project Title		Date
TEMPORARY PIPING PLAN		REPLACE BUILDING 113 STEAM LINE		4/20/2022
Approved Division Chief		Building Number	Checked	Drawn
		113	KW	KF
Approved Service Director		Location		DRAWING NO.
		FT MEADE, SD		P002
				Fig. 5 of 10

Revisions	Date



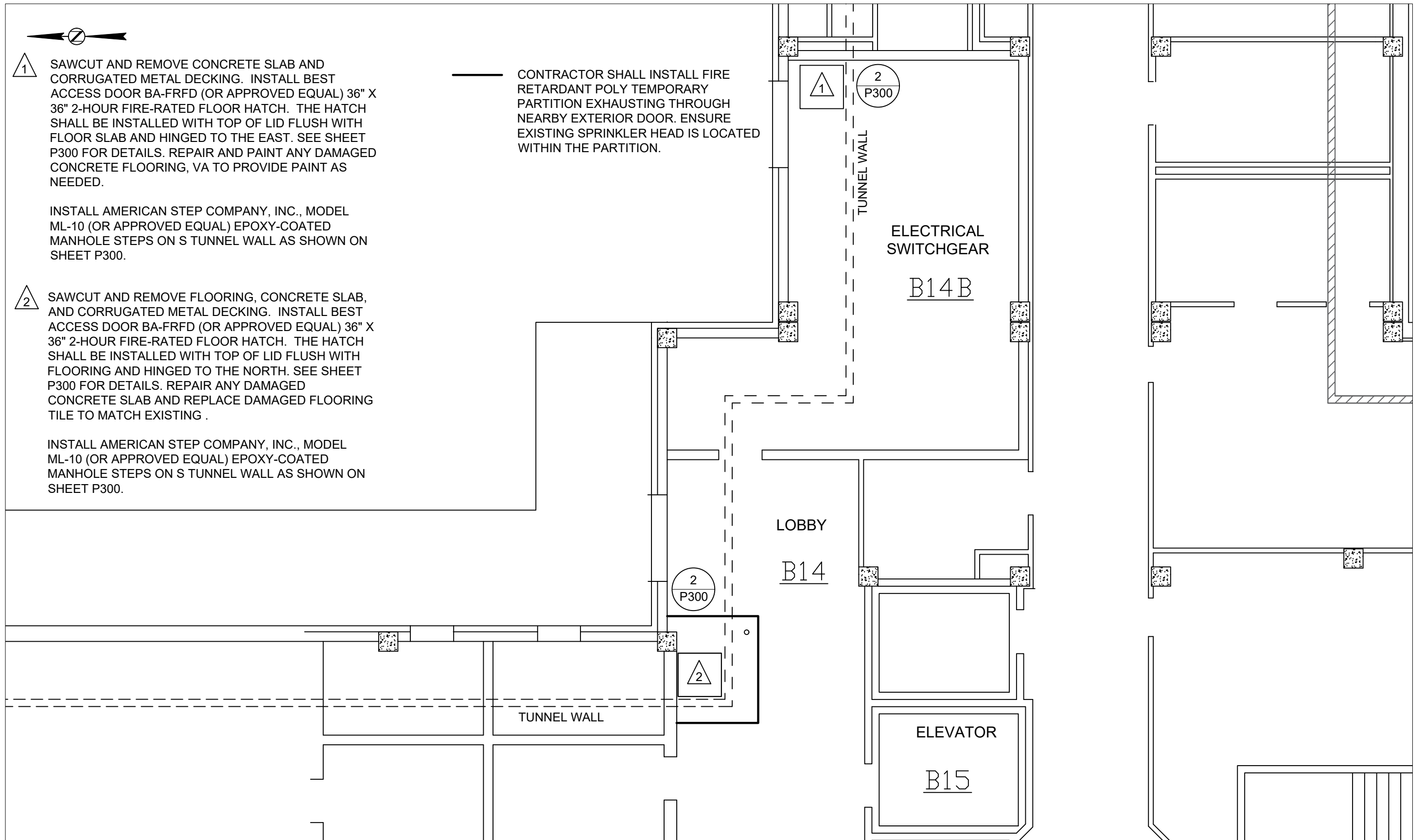
1 SAWCUT AND REMOVE CONCRETE SLAB AND CORRUGATED METAL DECKING. INSTALL BEST ACCESS DOOR BA-FRFD (OR APPROVED EQUAL) 36" X 36" 2-HOUR FIRE-RATED FLOOR HATCH. THE HATCH SHALL BE INSTALLED WITH TOP OF LID FLUSH WITH FLOOR SLAB AND HINGED TO THE EAST. SEE SHEET P300 FOR DETAILS. REPAIR AND PAINT ANY DAMAGED CONCRETE FLOORING, VA TO PROVIDE PAINT AS NEEDED.

INSTALL AMERICAN STEP COMPANY, INC., MODEL ML-10 (OR APPROVED EQUAL) EPOXY-COATED MANHOLE STEPS ON S TUNNEL WALL AS SHOWN ON SHEET P300.

2 SAWCUT AND REMOVE FLOORING, CONCRETE SLAB, AND CORRUGATED METAL DECKING. INSTALL BEST ACCESS DOOR BA-FRFD (OR APPROVED EQUAL) 36" X 36" 2-HOUR FIRE-RATED FLOOR HATCH. THE HATCH SHALL BE INSTALLED WITH TOP OF LID FLUSH WITH FLOORING AND HINGED TO THE NORTH. SEE SHEET P300 FOR DETAILS. REPAIR ANY DAMAGED CONCRETE SLAB AND REPLACE DAMAGED FLOORING TILE TO MATCH EXISTING.

INSTALL AMERICAN STEP COMPANY, INC., MODEL ML-10 (OR APPROVED EQUAL) EPOXY-COATED MANHOLE STEPS ON S TUNNEL WALL AS SHOWN ON SHEET P300.

CONTRACTOR SHALL INSTALL FIRE RETARDANT POLY TEMPORARY PARTITION EXHAUSTING THROUGH NEARBY EXTERIOR DOOR. ENSURE EXISTING SPRINKLER HEAD IS LOCATED WITHIN THE PARTITION.



Revisions	Date

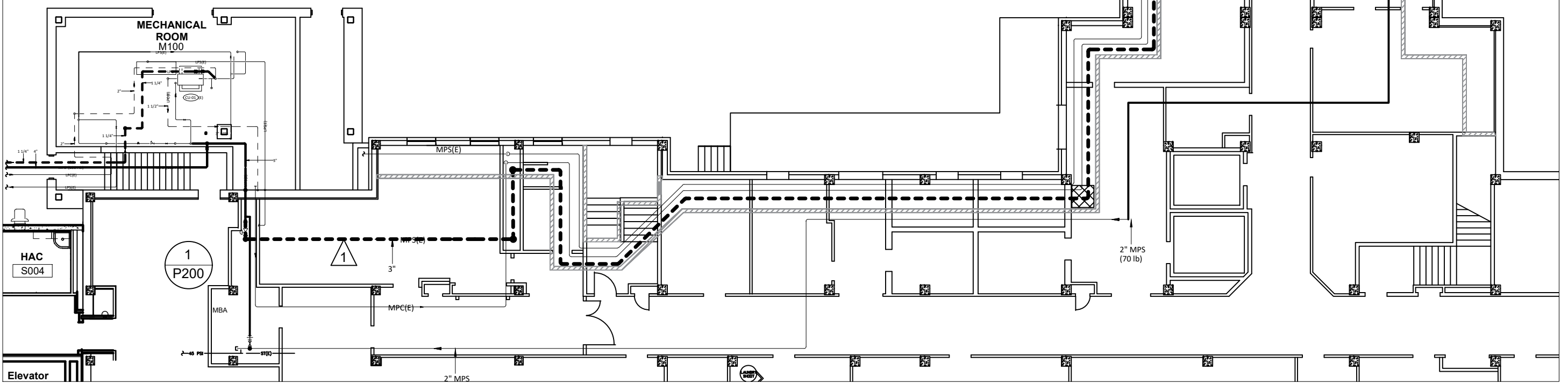
Drawing Title FLOOR ACCESS PLAN		Project Title REPLACE BUILDING 113 STEAM LINE		Date 4/20/2022
Approved: Division Chief		Building Number 113	Checked KW	Drawn KF
Approved: Service Director		Location FT MEADE, SD		Project No. 568-21-104
		DRAWING NO. P003		

Department of Veterans Affairs



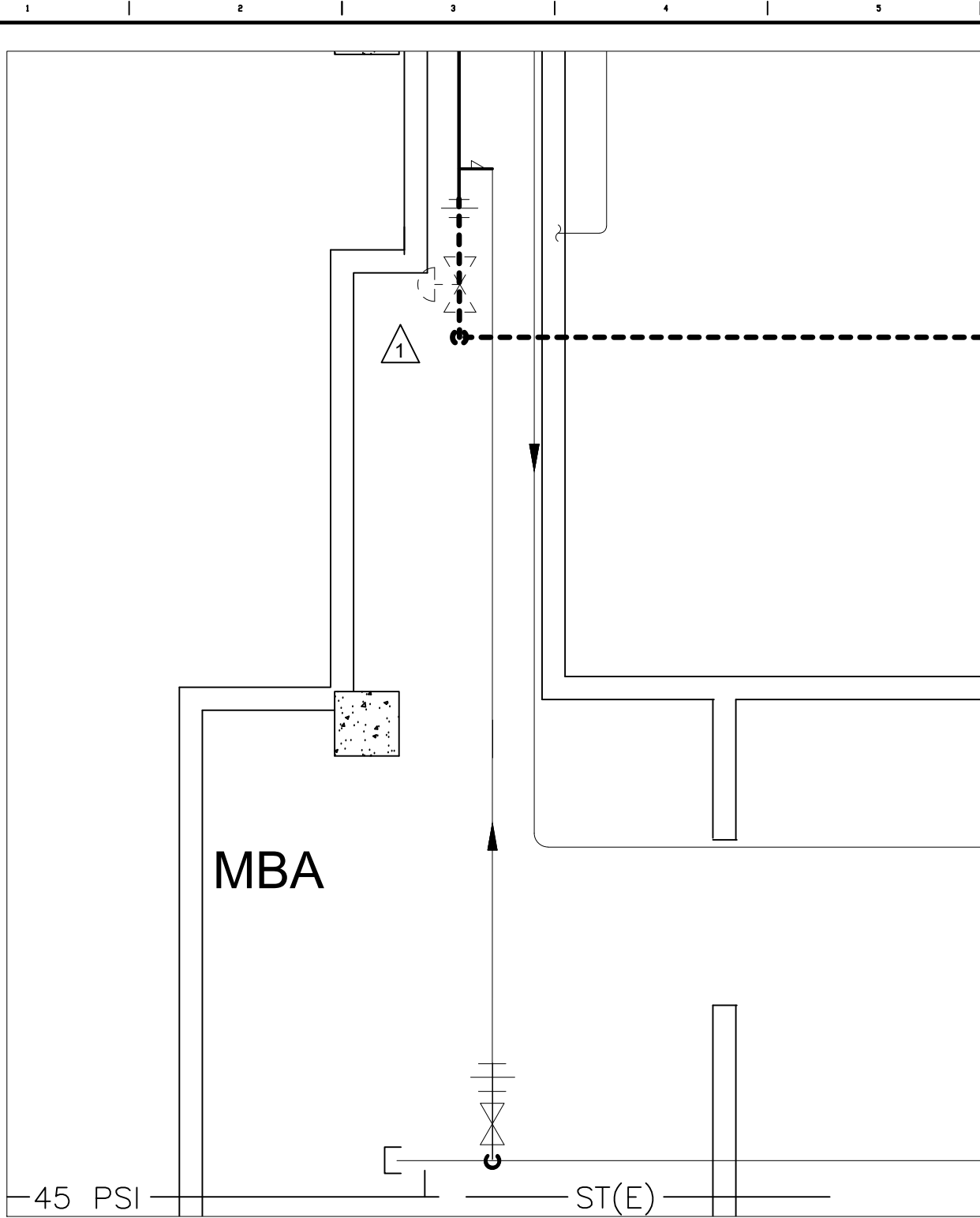
1 DEMO AND REPLACE 3" GATE VALVE, 3" MPS INSULATION, PIPING, DRIPS, AND FITTINGS. NEW PIPING SHALL BE 3" SCH 40 BLACK STEEL. ALL JOINTS SHALL BE WELDED. SEE SHEET P200 FOR TIE-IN DETAILS. SLOPE PIPE 1" PER 20' IN THE DIRECTION OF NEAREST TRAP ASSEMBLY.

RETAIN PIPE HANGERS FOR REUSE. INSTALL ADDITIONAL PIPE HANGERS WHERE NEEDED. APPROXIMATE LENGTH OF PIPING 280 LF.



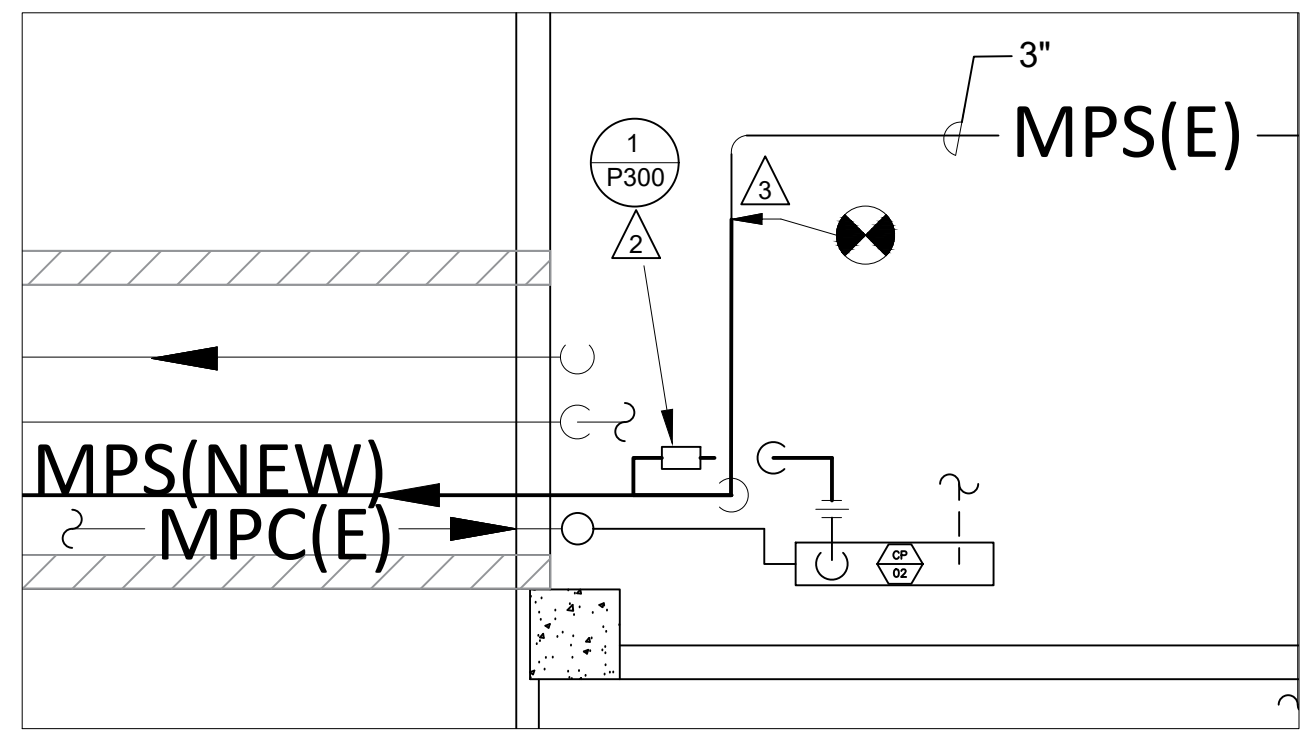
Revisions	Date

Drawing Title PIPING REPLACEMENT PLAN	Project Title REPLACE BUILDING 113 STEAM LINE			Date 4/20/2022
	Project No. 568-21-104			DRAWING NO. P100 SHEET 7 OF 10
Approved: Division Chief	Building Number 113	Checked KW	Drawn KF	Department of Veterans Affairs
Approved: Service Director	Location FT MEADE, SD			



1
P200

TIE-IN DETAILS ROOM MBA



2
P200

TIE-IN DETAILS ROOM B25

- 1 INSTALL UNION AND 3" CAST STEEL FLANGED GATE VALVE, OS&Y RISING STEM.
- 2 PROVIDE NEW MEDIUM PRESSURE STEAM DRIP ASSEMBLY AND PIPING TO NEAREST UNION. SEE SHEET P300 FOR DETAILS.
- 3 BEVEL AND WELD NEW 3" LINE INTO EXISTING.

Revisions	Date

Drawing Title TIE-IN PLAN	Project Title REPLACE BUILDING 113 STEAM LINE	Date 4/20/2022
Approved: Division Chief	Building Number 113	Checked KW
Approved: Service Director	Location FT MEADE, SD	Drawn KF
Project No. 568-21-104		DRAWING NO. P200 Fig. 8 of 10

Department of Veterans Affairs

A three inches = one foot
 B one and one-half inches = one foot
 C one inch = one foot
 D three-quarters inch = one foot
 E one-half inch = one foot
 F three-eighths inch = one foot
 one-quarter inch = one foot
 one-eighth inch = one foot

1
2
3
4
5
6
7
8
9
10
11

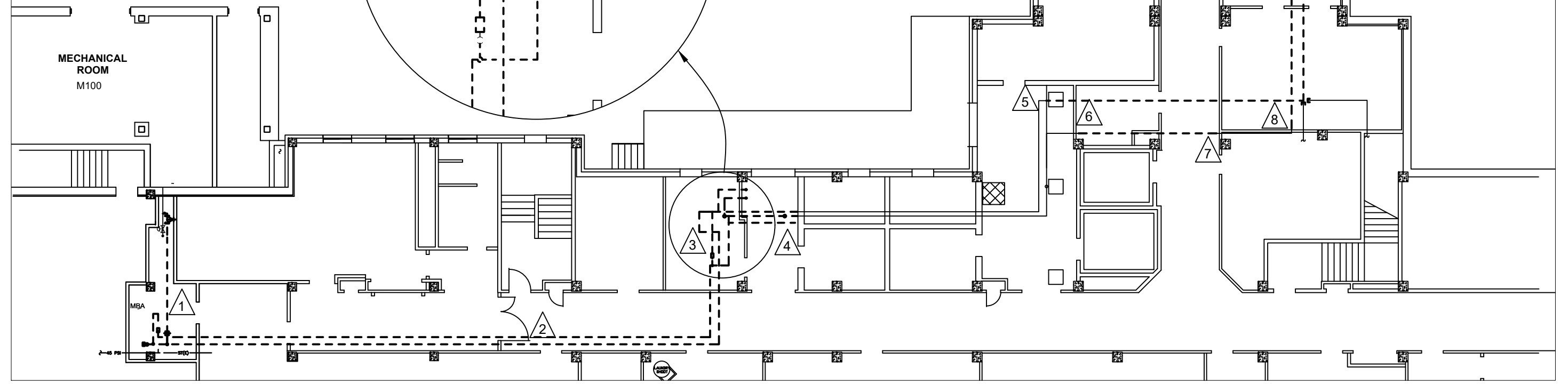
GENERAL NOTES:

1. ALL SURFACES SHALL BE PROTECTED PRIOR TO WORK AND AREA THOROUGHLY CLEANED WHEN COMPLETE.
2. ANY DAMAGE TO WALLS, CEILING, SUSPENDED CEILING SYSTEM, OR TILES SHALL BE REPAIRED/REPLACED AT CONTRACTOR'S EXPENSE AND SHALL MATCH EXISTING. VA WILL PROVIDE TOUCH-UP PAINT.

- 1 DEMO VALVE AND ALL ASSOCIATED SUPPLY AND CONDENSATE PIPING, TRAPS, AND HANGERS TO EQUIPMENT. CAP AND INSULATE AT 2" REDUCER. RETURN VALVE TO VA.
- 2 ALL WORK IN THE CORRIDOR IN THIS AREA SHALL BE PERFORMED AFTER BUSINESS HOURS OR ON A WEEKEND.
- 3 DEMO AND REMOVE STEAM AND CONDENSATE PIPING AND TRAP ASSEMBLY.
- 4 CUT STEAM AND CONDENSATE PIPING AS CLOSE TO WALL PENETRATION AS POSSIBLE AND LEAVE IN PLACE THE REMAINDER OF PIPING. CUT TEE'D PIPE ON CONDENSATE AS CLOSE TO THE DECK AS POSSIBLE AND REMOVE.
- 5 CUT STEAM PIPING AS CLOSE TO ELBOW AS POSSIBLE AND REMOVE.
- 6 CUT CONDENSATE PIPING AS CLOSE TO WALL PENETRATION AS POSSIBLE AND REMOVE.

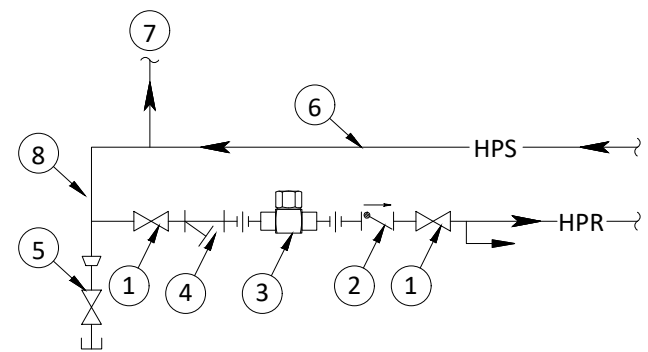
- 7 CUT CONDENSATE PIPING AS CLOSE TO WALL PENETRATION AS POSSIBLE AND REMOVE.
- 8 CUT CONDENSATE PIPING AS CLOSE TO WALL PENETRATION AS POSSIBLE. ALL WORK IN THE REMAINDER OF ROOMS TO B25 SHALL BE PERFORMED AFTER BUSINESS HOURS OR ON A WEEKEND.
- 9 DEMO AND REMOVE CONDENSATE PIPING TO NEAREST TEE, CAP AND INSULATE. ADD 2-HOUR FIRESTOPPING TO B25 PENETRATION.
- 10 DEMO AND REMOVE TO TEE, CAP, AND INSULATE. ADD 2-HOUR FIRE STOPPING TO B25 PENETRATION.

--- DEMO PIPING
 — PIPING TO REMAIN



Drawing Title 2" AND CONDENSATE DEMO	Project Title REPLACE BUILDING 113 STEAM LINE	Date 4/20/2022
Approved Division Chief 	Building Number 113	Project No. 568-21-104
Approved Service Director 	Checked KW	Drawn KF
Location FT MEADE, SD	DRAWING NO. P201	Page 9 of 10

Department of Veterans Affairs

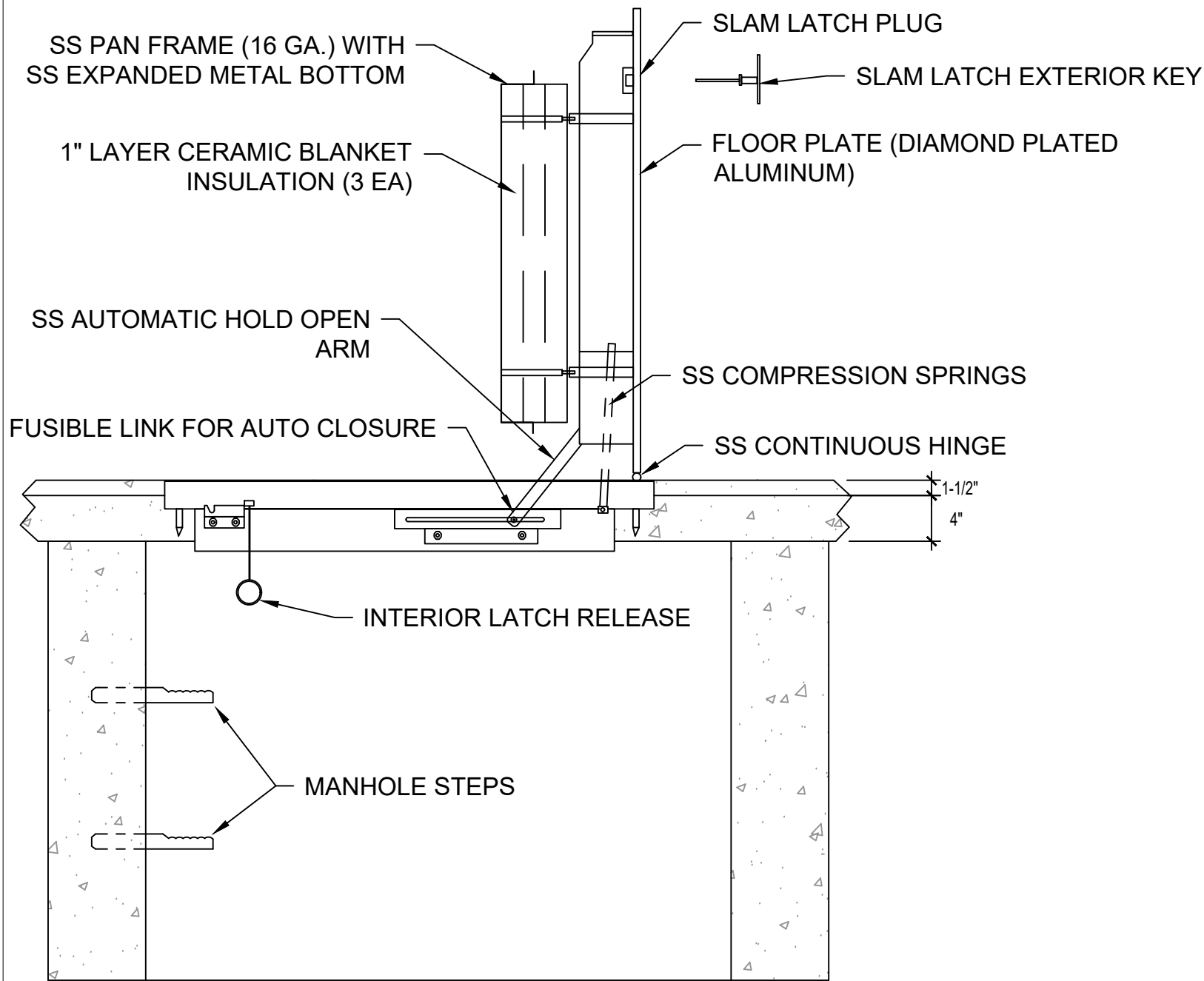


- ① SHUT-OFF VALVE
- ② CHECK VALVE
- ③ THERMO-DYNAMIC STEAM TRAP
- ④ STRAINER
- ⑤ BLOW DOWN
- ⑥ HIGH PRESSURE (>30 PSIG)
- ⑦ VERTICAL RISER
- ⑧ DRIP LEGS SHALL BE FULL-SIZE AND EXTEND BEYOND THE RISER. DRIP LEGS IN OTHER LOCATIONS SHALL BE THE SAME DIAMETER AS THE MAIN. DRIP LEG SHALL BE 1-1/2 TIMES THE PIPE DIAMETER AND NOT LESS THAN 8 INCHES.

SCALE: NONE

1
P300

STEAM DRIP ASSEMBLY



INTERIOR LATCH RELEASE

MANHOLE STEPS

GENERAL NOTES

1. ALL HATCH MATERIALS SHALL BE ALUMINUM OR STAINLESS STEEL.
2. CLEAR OPENING (EXCLUDING HATCH ACCESSORIES) SHALL BE NO LESS THAN 32"
3. CERTIFIED 2-HOUR RATING REQUIRED
4. MANHOLE STEPS SHALL BE EPOXY-COATED ASTM A 615 GR 60 STEEL REINFORCEMENT CORE DRILLED AND EPOXY SET IAW MANUFACTURER'S RECOMMENDATIONS.
5. MANHOLE STEPS SHALL BE SPACED VERTICALLY NO MORE THAN 14" FROM CENTERLINE OF EACH STEP.
6. MANHOLE STEPS SHALL BE LEVEL, INCLUDE A NON-SLIP TREAD, AND SHALL MEET ALL OSHA STANDARDS.

2
P300

FLOOR ACCESS DETAILS

Revisions	Date

Drawing Title DETAILS	Project Title REPLACE BUILDING 113 STEAM LINE	Date 4/20/2022
Approved: Division Chief	Building Number 113	Checked KW
Approved: Service Director	Location FT MEADE, SD	Drawn KF
Project No. 568-21-104		DRAWING NO. P300
		Engl Ocr10

Department of Veterans Affairs