

REPAIR EXTERIOR FINISHES

FARGO VA HEALTH CARE SYSTEM
DEPARTMENT OF VETERAN'S AFFAIRS
2101 ELM STREET
FARGO, NORTH DAKOTA 58102

PROJECT NO. 437-21-111

VA



U.S DEPARTMENT OF VETERAN'S AFFAIRS
VETERAN'S HEALTH ADMINISTRATION

SHEET INDEX	
GENERAL	
G-000	COVER SHEET
G-001	ABBREVIATION, SYMBOLS, LEGENDS AND NOTES
G-002	CAMPUS MAP / CONTRACTOR STAGING
CIVIL	
CS101	SITE PLAN
ARCHITECTURE	
A-000	DETAILS
A-130	ROOF PLAN IMAGE
A-131	ROOF PLAN - PRECAST AND LIMESTONE COPING
A-140	BLDG 40 PLAN, ELEV, DETAILS
A-400	DRONE IMAGE MAP
A-401	DRONE IMAGES GREEN
A-402	DRONE IMAGES GREEN
A-403	DRONE IMAGES GREEN
A-404	DRONE IMAGES GREEN
A-410	DRONE IMAGES RED
A-411	DRONE IMAGES RED
A-430	DRONE IMAGES BLUE
A-440	DRONE IMAGES CYAN
A-441	DRONE IMAGES CYAN
A-450	DRONE IMAGES ORANGE
A-451	DRONE IMAGES ORANGE
A-452	DRONE IMAGES ORANGE
A-453	DRONE IMAGES ORANGE
A-454	DRONE IMAGES ORANGE
A-460	DRONE IMAGES PURPLE
A-461	DRONE IMAGES PURPLE
A-462	DRONE IMAGES PURPLE
A-463	DRONE IMAGES PURPLE
A-470	DRONE IMAGES YELLOW
A-471	DRONE IMAGES YELLOW
A-472	DRONE IMAGES YELLOW
A-473	DRONE IMAGES YELLOW
A-474	DRONE IMAGES YELLOW
A-480	DRONE IMAGES PINK
A-481	DRONE IMAGES PINK
A-482	DRONE IMAGES PINK
A-483	DRONE IMAGES PINK
A-490	DRONE IMAGES BROWN
ELECTRICAL	
E-000	ELECTRICAL LEGEND AND ABBREVIATIONS
E-100	ELECTRICAL PLANS

CONSTRUCTION DOCUMENTS

<div>Revisions:</div> <div>Date</div>	CONSULTANTS: <div><div></div><div>MBN ENGINEERING 503 7TH STREET NORTH, SUITE 200 FARGO, NORTH DAKOTA 58102 PH: (701) 478-6336 FAX: (701) 478-6340</div></div>	<div></div>	ARCHITECT/ENGINEERS: <div><div></div><div>FOURFRONT DESIGN, INC. 517 7TH STREET RAPID CITY, SOUTH DAKOTA 57701 PH: (605) 342-9470 FAX: (605) 342-2377 WWW.FOURFRONTDESIGN.COM</div></div> <div>2481.A15</div>	Drawing Title <div>COVER SHEET</div> <div>Approved: Project Director CLIFFORD HALVORSON</div>	Project Title <div>REPAIR EXTERIOR FINISHES</div> <div>Location VA HCS FARGO, ND</div> <div>Date 11/10/2021</div> <div>Checked KP</div> <div>Drawn TLB</div>	Project Number <div>437-21-111</div> <div>Building Number</div> <div>Drawing Number G-000</div> <div>Dwg. 1 of 39</div>	Office of Construction and Facilities Management
---------------------------------------	--	-------------	---	---	--	---	--

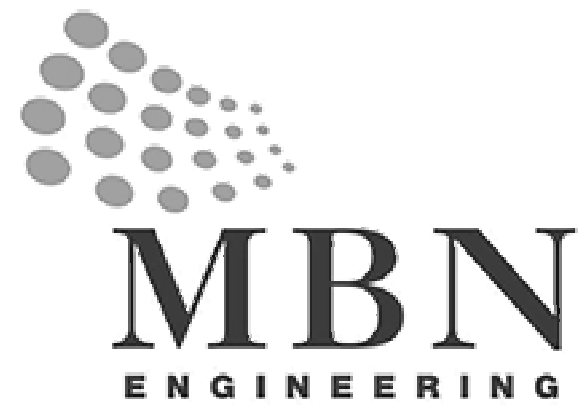
PROJECT DIRECTORY:



FOURFRONT DESIGN INC.
517 7TH STREET
RAPID CITY, SOUTH DAKOTA 57701
PHONE (605) 342-9470

ARCHITECT
KARL PERSON, AIA, NCARB

ELECTRICAL ENGINEER
RAY DAWES, PE



MBN ENGINEERING INC.
3330 FIECHTNER DRIVE SUITE 206
FARGO, NORTH DAKOTA 58103
(701) 235-5593

CIVIL ENGINEER
TONY EUKEL, PE

STRUCTURAL ENGINEER
DOUGLAS B. SHARONO, PE

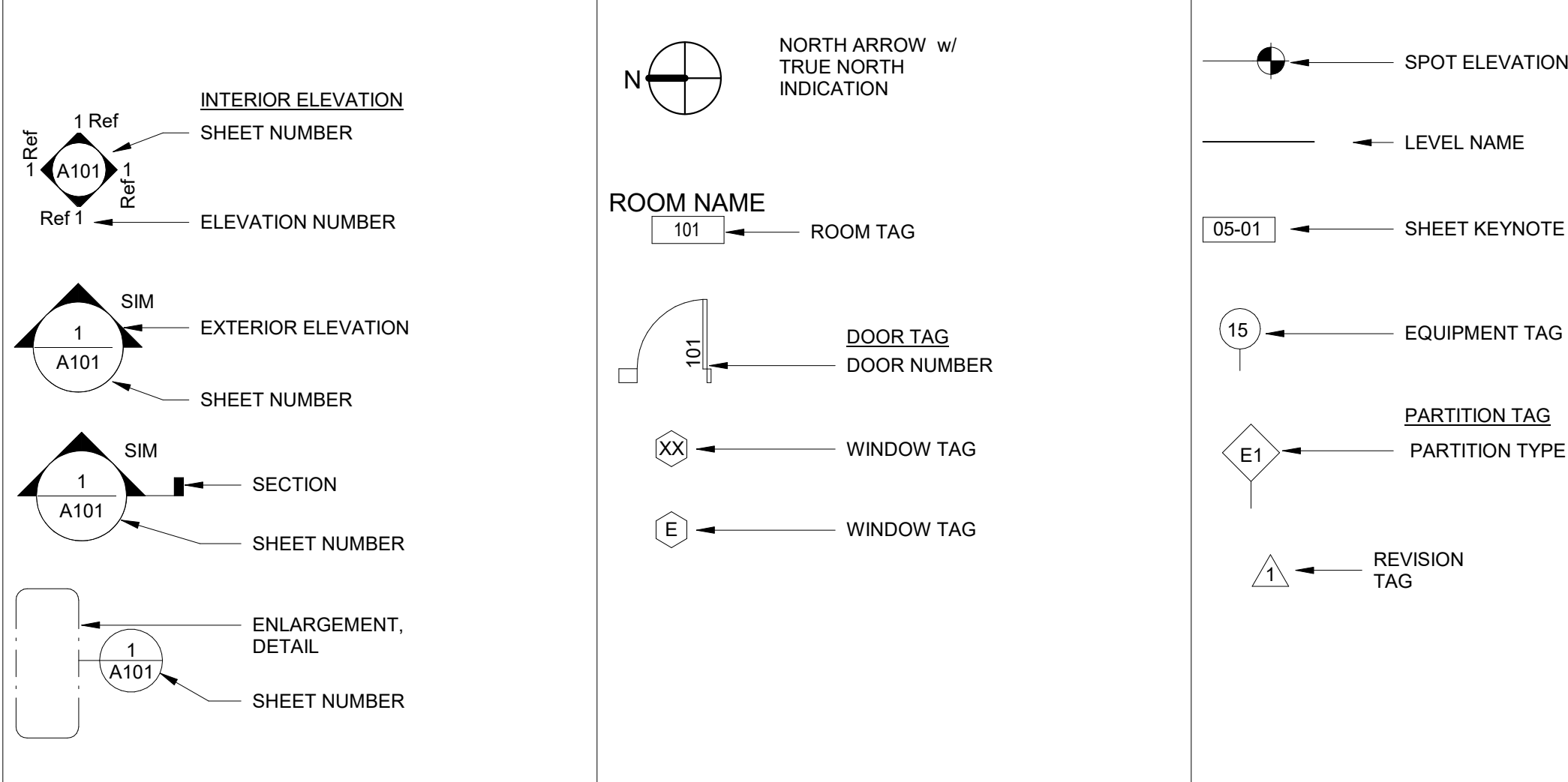
DRAWING ABBREVIATIONS

A A LABEL A/C A/E AB ACC ACS ACT ADA ADJ ADO AFF ALT ALUM APPROX AS ARCH ASSY AT ATC AVG AW AWT	CLASS A DOOR AIR CONDITIONED ARCHITECT/ENGINEER ANCHOR BOLT ACCESSIBLE AUTOMATIC CONTROL SYSTEM ACOUSTICAL CEILING TILE AMERICANS WITH DISABILITIES ACT ADJUSTABLE AUTOMATIC DOOR OPERATOR ABOVE FINISHED FLOOR ALTERNATE ALUMINUM APPROXIMATE AS REQUIRED ARCHITECTURAL ASSEMBLY ACOUSTICAL TILE ACOUSTICAL TILE CEILING AVERAGE ARCHITECTURAL WOODWORK ACOUSTICAL WALL TREATMENT	B B LABEL BB BD BLDG BLKG BOS BRKT	CLASS B DOOR BASEBOARD BOARD BUILDING BLOCKING BOTTOM OF STEEL BRACKET	C C CONC C LABEL CAB CC CD CF CF/CI CFE CFMF CG CJ CL CLG HT CLGL CLL CLR COL COMM CONC CONC FLR CONST CONT COORD CORR CPT CTR	CAST CONCRETE CLASS C DOOR CABINET MATERIAL & INSTALLATION BY CONTRATOR CONSTRUCTION DOCUMENTS CONTRACTOR FURNISHED CONTRACTOR INSTALLED CONTRACTOR FURNISHED EQUIPMENT COLD-FORMED METAL FRAMING CORNER GUARD CONTROL JOINT CENTER LINE CEILING CEILING HEIGHT CLEAR GLASS COLUMN LINE CLOSET COLOR COLUMN COMMUNICATION CONCRETE FLOOR CONSTRUCTION CONTINUE COORDINATE CORRIDOR CARPET CENTER	D D LABEL D/L DEMO DEPT DET DIA DIM DIR DIST DOC DR DWG	DEPTH CLASS D DOOR DOUBLE DEMOLITION DEPARTMENT DETAIL DIAMETER DIAGONAL DIMENSION DIRECTION DISTANCE DOCUMENT DOOR DRAWING	E E LABEL EA EF EJ ES EL EP EQ EQUIP EXIST EXP EXPS	CLASS E DOOR EACH FACE EXPANSION JOINT EACH SIDE ELEVATION ELECTRICAL PANEL EPOXY EQUAL EQUIPMENT EXISTING EXPANDED EXPANSION EXPANDED STRUCTURE	F FA FAAP FED FF FF EL FHP FIN FIN FLR FIXT FLD LG FLEX FLG FLUSH MT FLR FR FRG FRMG FRP FRYW FS FSTNR FEET FTG FWC	FIRE ALARM FIRE ALARM ANNUNCIATOR PANEL FEDERAL FINISH FACE FINISH FLOOR ELEVATION FULL HEIGHT PARTITION FINISH FINISH FLOOR FIXTURE FLOOR FLEXIBLE FLOORING FLUSH MOUNT FLOOR FIRE RESISTANT FIBER REINFORCED GYPSUM FRAMING FIBERGLASS REINFORCED PLASTIC FIRE RETARDANT TREATED WOOD FASTENER FEET FOOTING FABRIC WALLCOVERING	G GA GC GFCI GFGI GLZ GWB GYP BD GYP PL	GAUGE GENERAL CONTRACTOR GOVERNMENT FURNISHED CONTRACTOR INSTALLED GOVERNMENT INSTALLED GLAZING GYPSUM WALL BOARD GYPSUM BOARD GYPSUM PLASTER	H HAC HEPA HDW HM HMD HORIZ HT HR	HOUSEKEEPING AIDS CLOSET HIGH EFFICIENCY PARTICULATE AIR (FILTER) HARDWARE HOLLOW METAL HOLLOW METAL DOOR HORIZONTAL HEIGHT HANDRAIL	I IBC ID INSUL INT ILO	INTERNATIONAL BUILDING CODE INSIDE DIAMETER INSULATION INTERIOR IN LIEU OF	J JAN JT	JANITOR JOINT	K KPL	KICKPLATE	L LAM LBS L/F LIN LINO LOC LT	LAMINATE POUND LINEAR FEET (FOOT) LINEAR LINOLEUM LOCATION LIGHT	M MATL MAX MECH MFR MID MIN MISC MLG MOD MTG MTD MVL	MATERIAL MAXIMUM MECHANICAL METAL MANUFACTURER MIDDLE MINIMUM, MINUTE MISCELLANEOUS MOLDING (MOULDING) MODIFY MOUNTING MOUNTED MOVABLE	N (N) N NA NFPA NIC NO NOM NP NTS NV	NEW NORTH NOT APPLICABLE NATIONAL FIRE PROTECTION ASSOCIATION NOT IN CONTRACT NUMBER NOMINAL NO PAINT NOT TO SCALE NARROW VISION	O OA OC OD OFF OPH OPG OPP OPD OPR ORIG	OVERALL ON CENTER OUTSIDE DIMENSION OFFICE OPPOSITE HAND OPENING OPPOSITE OPaque OPERABLE ORIGINAL	P PAT PB PBD PCC PCF PCT PERF PERIM PFW PHASE PLAM PLBG PLUG PLYWD PNL PP PL PR PTN PWR	PAINT PATTERN FULL BOX PARTICLEBOARD PRECAST CONCRETE POUNDS PER CUBIC FOOT PERCENT PERFORATED PERIMETER POLYPROPYLENE FABRIC WALLCOVERING PLASTIC LAMINATE PLUMBING PILLOW PLYWOOD PANEL PUSH-PULL PLATE PAIR PARTITION POWER	Q QTY	QUANTITY	R (R) RB RBL RCP REC REF (REL) REM REP REPL REQD REV RESIL REST RF RHR RM RO RVL	REMOVE RUBBER BASE RUBBER REFLECTED CEILING PLAN RECESSED REFERENCE RELOCATED(D) REMOVABLE REPAIR REPLACE REQUIRED REVERSE RESILIENT RESTROOM RESILIENT FLOORING RIGHT HAND REVERSE ROOM ROUGH OPENING REVEAL	S SAB SBP SCHED SF SGL SHTTG SIM SLANT SMK SMLS SNS SPE SPEC SQ SQ IN SSMR SST ST STD STL STOR SUSP SV	SOUND ATTENUATION BATTS SMOKE BARRIER PARTITION SCHEDULE SQUARE FOOT (FEET) SINGLE SHEETING SIMILAR SEALANT SMOKE SEAMLESS SHEET METAL SCREW SPECIFIC ONE SPECIFICATION SQUARE SQUARE INCH STANDING SEAM METAL ROOF STAINLESS STEEL STAIRS STANDARD STEEL STORAGE SUSPENDED SHEET VINYL	T TEMP TFF THK TMPD GL TN TRANS TRD	TEMPORARY TOP OF FINISH FLOOR THICKNESS TEMPERED GLASS TRUE NORTH TRANSOM TREATED	U U/S UNO US	UNDERSIDE UNLESS NOTED OTHERWISE UNDERSIDE	V VB VC VEF VERT VIF VINYL VSF VV VWC	VINYL BASE MATERIAL BY V.A., INSTALLED BY CONTRACTOR VERTICAL EACH FACE VERTICAL VERIFY IN FIELD VINYL VINYL SHEET FLOORING MATERIAL AND INSTALLATION BY V.A. VINYL WALL COVERING	W W W/ WB WD WVF WSF	WALL COVERING WALL WALL BORDER WOOD WELDED VINYL SHEET FLOORING WELDED SEAM VINYL SHEET FLOORING
--	---	--	--	---	---	--	--	--	---	--	---	--	---	--	--	--	--	-----------------------	------------------	-----------------	-----------	---	--	---	--	---	---	--	---	---	--	-----------------	----------	--	---	--	---	---	---	------------------------------	--	---	--	---	---

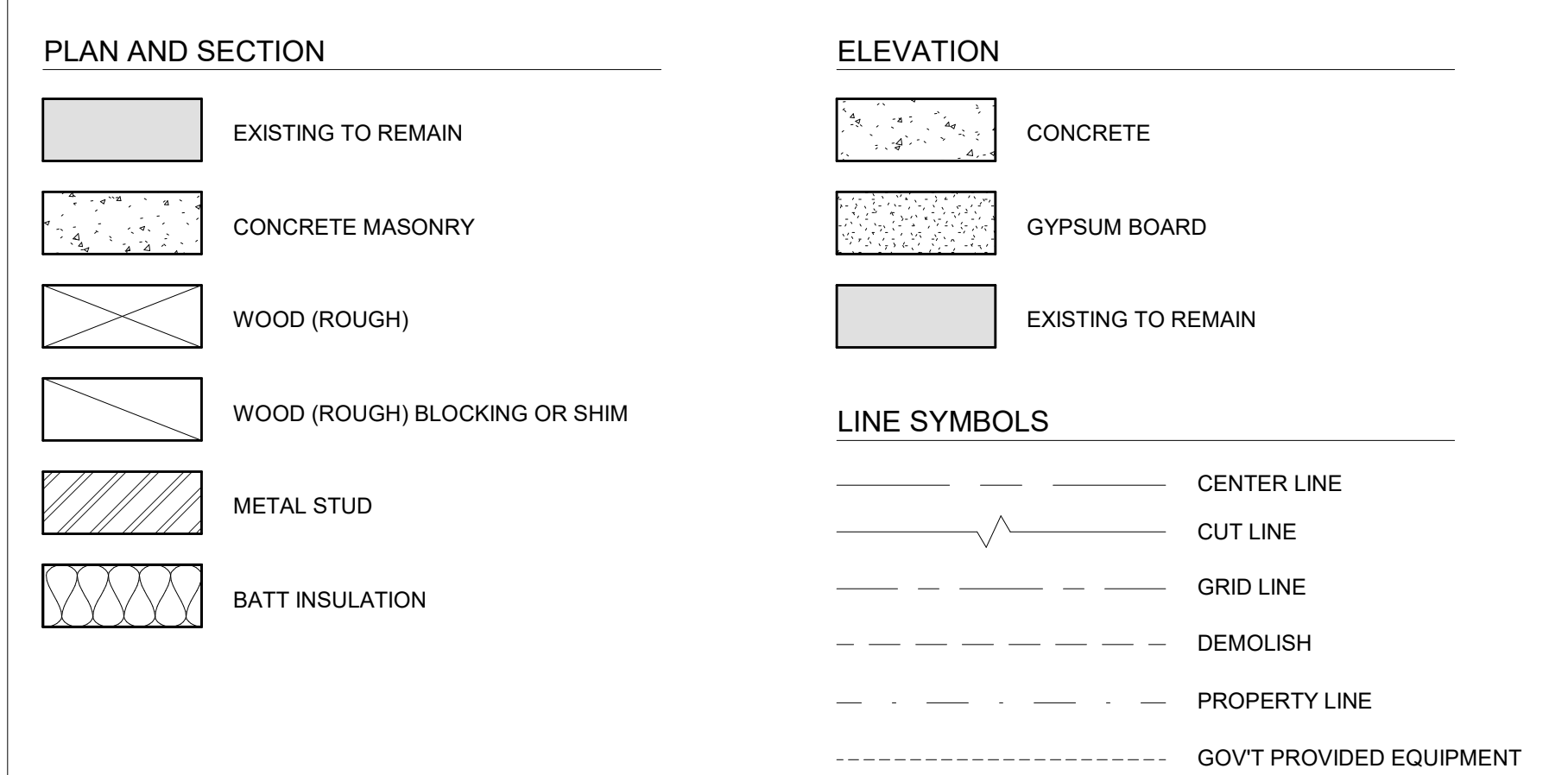
GENERAL NOTES

- THE FOLLOWING WILL APPLY, UNLESS OTHERWISE NOTED.
- SHEET SIZE FOR PROPER SCALE IS 42"x30". CONTRACTOR SHALL NOT SCALE DRAWINGS BUT SHALL REQUEST THE DESIRED DIMENSIONS FROM THE A/E.
 - IT IS THE RESPONSIBILITY OF THE CONTRACTOR TO FIELD VISIT THE PROJECT AND VERIFY EXISTING CONDITIONS/DIMENSIONS AND PROPOSED CONDITIONS. COORDINATE DEMOLITION BETWEEN ALL TRADES. NOTIFY COR IMMEDIATELY OF ANY CONFLICTS OR DISCREPANCIES.
 - ALL WORK SHALL COMPLY WITH APPLICABLE CODES, REGULATIONS, AND ORDINANCES. THE CONTRACTOR SHALL PERFORM ALL TESTING AND INSPECTIONS AS SPECIFIED, OR AS NECESSARY TO DEMONSTRATE A COMPLETE AND SATISFACTORY INSTALLATION.
 - THE CONTRACTOR SHALL PROTECT EXISTING BUILDING AND SITE MATERIALS SCHEDULED TO REMAIN, AND SHALL BE RESPONSIBLE FOR DAMAGE TO THE SAME RESULTING FROM WORK UNDER THIS CONTRACT. THE CONTRACTOR SHALL RESTORE DAMAGED EXISTING BUILDING AND SITE MATERIALS TO THEIR ORIGINAL CONDITION. CONTRACTOR SHALL EXERCISE CAUTION TO AVOID ANY DAMAGE WHEN PERFORMING EARTHWORK, PAVING, OR ANY CONSTRUCTION IN THE VICINITY OF EXISTING UTILITIES, BUILDINGS, AND LANDSCAPING.
 - CONTRACTOR SHALL INSPECT SITE AND FIELD VERIFY ALL DIMENSIONS AND CONDITIONS PRIOR TO COMMENCING CONSTRUCTION. CONTRACTOR SHALL NOTIFY ARCHITECT/CONTRACTING OFFICER REPRESENTATIVE IMMEDIATELY OF ANY DISCREPANCIES.
 - CONTRACTOR SHALL COORDINATE ALL WORK AND SHOP DRAWINGS WITH OTHER TRADES.
 - CONTRACTOR SHALL BE RESPONSIBLE FOR COORDINATION OF ALL WORK. CONTRACTOR SHALL ANTICIPATE AREAS WHERE THE INSTALLATION OF CIVIL AND STRUCTURAL WORK WILL BE RESTRICTED, CONGESTED, OR DIFFICULT TO INSTALL, AND SHALL COORDINATE INSTALLATION BETWEEN ALL TRADES.
 - SUB-CONTRACTOR SHALL COORDINATE LOCATIONS FOR ALL MECHANICAL AND ELECTRICAL ITEMS WITH THE GENERAL CONTRACTOR. CONTRACTOR SHALL NOTIFY ARCHITECT/CONTRACTING OFFICER REPRESENTATIVE OF ANY DISCREPANCIES PRIOR TO INSTALLATION AND/OR FABRICATION.
 - CONTRACTORS STAGING AREA AND PARKING
 - A. LOCATION EAST OF BUILDING NO. 50, PAST CITY LIFT STATION TO BE USED FOR ALL EQUIPMENT, TRAILER AND VEHICLE PARKING. TO BE SHARED WITH VA AND OTHER CONTRACTORS.
 - B. OTHER STAGING AREAS TO BE COORDINATED WITH VA ON PER NEED BASIS.
 - C. RESTORE SITE TO ORIGINAL AND/OR BETTER CONDITION UPON CONSTRUCTION COMPLETION.
 - WHERE EXISTING EQUIPMENT, PIPING, CONDUIT, DUCTS, ETC. ARE TO BE REMOVED, SUCH REMOVAL SHALL INCLUDE ALL ANCHORS, HANGERS, OR HARDWARE, ETC.
 - NEW WORK SHALL LINE WITH AND MATCH EXISTING WORK EXCEPT WHERE OTHERWISE DIMENSIONED OR DETAIL.
 - NEW FINISHES APPLIED PATCH TO MATCH TO EXISTING FLOORS, WALLS AND PARTITIONS. IF FINISH CANNOT BE MATCHED, ALL NEW FINISH SHALL BE PROVIDED AT NO ADDITIONAL COST TO THE GOVT.
 - WORK AT THE DISCRETION OF THE VA MAY BE SHUT DOWN AND RESCHEDULED DUE TO CRITICAL AREAS OR SPECIAL NEEDS OF PATIENTS AND STAFF AT NO ADDITIONAL COST TO THE GOVERNMENT.
 - CONTRACTOR TO VERIFY ALL EXISTING SITE CONDITIONS.
 - CONTRACTOR TO PROVIDE PROTECTION AGAINST DAMAGE, INCLUDING WATER PENETRATION, TO EXISTING STRUCTURE AND FINISHES WHERE DEMOLITION AND NEW CONSTRUCTION OCCURS.
 - ALL EXISTING EQUIPMENT, SIGNAGE AND ART SHALL BE SALVAGED FOR REUSE TO BE REINSTALLED BY CONTRACTOR AT SAME LOCATIONS IF POSSIBLE. UTILIZE ALTERNATE LOCATIONS AT OWNER'S DISCRETION.
 - ALL TEMPORARY CONSTRUCTION PARTITIONS SHALL BE 1 HOUR RATED. DOORS SHALL HAVE CLOSERS AND LOCKING HARDWARE.
 - ALL WALL OR FLOOR PENETRATIONS (NEW OR ABANDONED EXISTING) UNDER THIS PROJECT SHALL BE SEALED, FILLED OR PROTECTED IMMEDIATELY TO MAINTAIN ALL SMOKE AND FIRE PASSAGE SITUATIONS USE APPROVED FIRE/SMOKE STOP MATERIAL OR EQUIVALENT CONSTRUCTION.
 - UNLESS SPECIFICALLY NOTED TO BE REMOVED, ALL EXISTING WORK SHALL REMAIN INTACT.
 - UNLESS OTHERWISE NOTED, ALL DIMENSIONS ARE TAKEN FROM FACE OF EXISTING WALL.
 - THE CONTRACTOR SHALL EXERCISE CAUTION DURING DEMOLITION OPERATIONS. THE CONTRACTOR SHALL REPAIR AND RESTORE ALL EXISTING CONSTRUCTION, INDICATED TO REMAIN, THAT IS DAMAGED DURING DEMOLITION OPERATIONS. REPAIRS TO DAMAGED WORK AREAS SHALL MATCH EXISTING ADJACENT FINISHED SURFACES OR THE CONTRACTOR SHALL REPLACE DAMAGED CONSTRUCTION WITH NEW WORK.
 - THE CONTRACTOR SHALL FIELD VERIFY ALL EXISTING DIMENSIONS PRIOR TO STARTING WORK.
 - WHERE EXISTING FINISHES ARE INDICATED TO BE REMOVED, ASSUME THAT FINISHES OCCUR THROUGHOUT THE SPACE INDICATED, UNLESS OTHERWISE NOTED.
 - WHERE COMPLETE DEMOLITION IS INDICATED, COMPLETELY REMOVE ALL MECHANICAL, ELECTRICAL, AND PLUMBING EQUIPMENT AND SYSTEMS THROUGHOUT.
 - CONTRACTOR TO COORDINATE WITH ALL UTILITY COMPANIES PRIOR TO THE START OF DEMOLITION.

DRAWINGS SYMBOLS



MATERIAL LEGEND

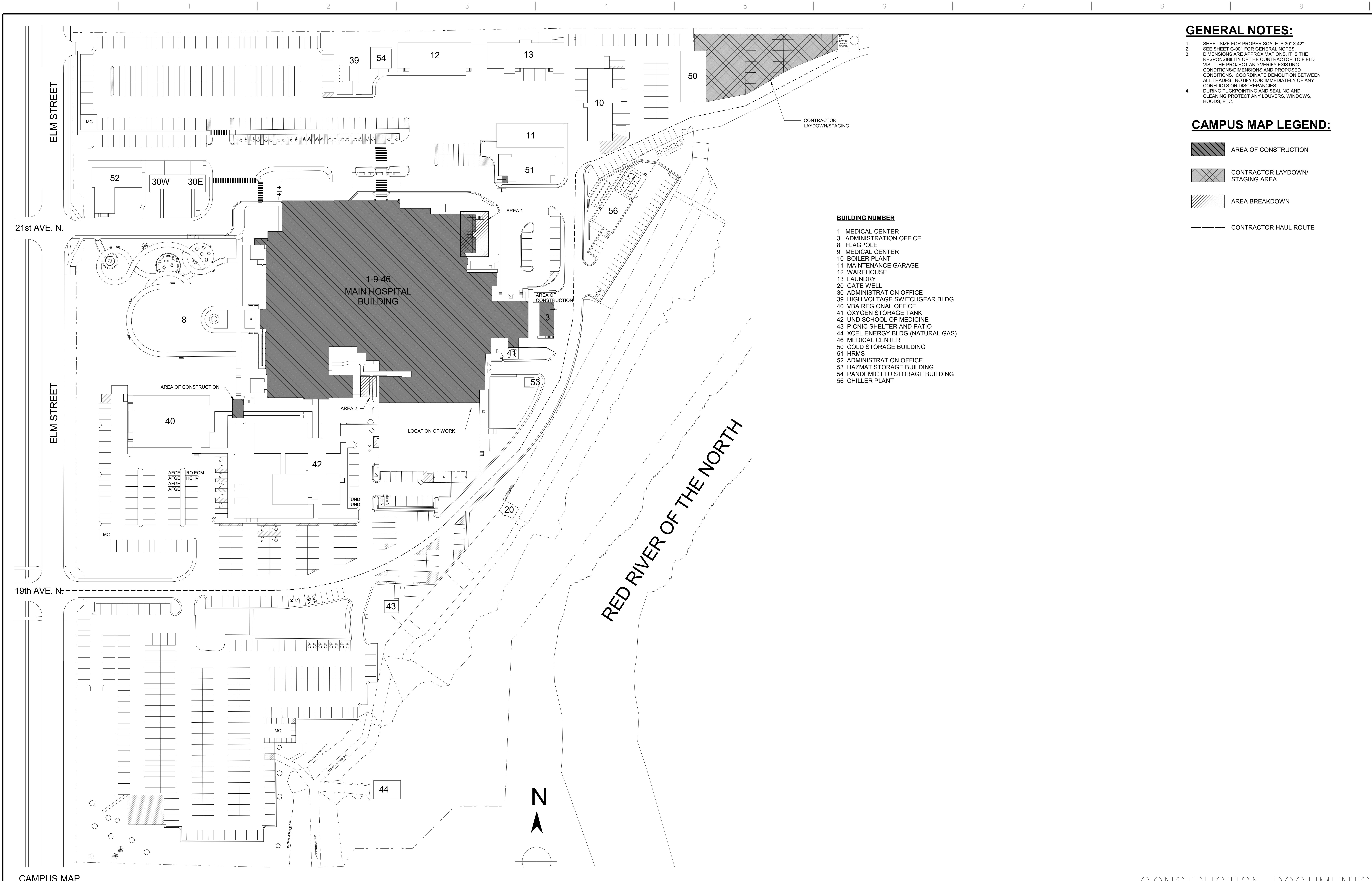


CONSTRUCTION DOCUMENTS

Revisions:		Date:		CONSULTANTS:		ARCHITECT/ENGINEERS:		Drawing Title		Project Title		Project Number		Office of Construction and Facilities Management	
				MBN ENGINEERING 503 7TH STREET NORTH, SUITE 206 FARGO, NORTH DAKOTA 58102 PH: (701) 478-6336 FAX: (701) 478-6340		FOURFRONT DESIGN INC. 517 7TH STREET RAPID CITY, SOUTH DAKOTA 57701 PH: (605) 342-9470 FAX: (605) 342-2377 WWW.FOURFRONTDESIGN.COM		ABBREVIATION, SYMBOLS, LEGENDS AND NOTES		REPAIR EXTERIOR FINISHES		437-21-111		Office of Construction and Facilities Management	
								Approved: Project Director CLIFFORD HALVORSON		Location VA HCS FARGO, ND		Building Number			
										Date 11/10/2021		Checked KP		Drawn TLB	
								2481.A15				Drawing Number G-001		Dwg. 2 of 39	
														Department of Veterans Affairs	

11/9/2021 11:07:29 AM

one eighth inch = one foot
one quarter inch = one foot
three eighths inch = one foot
one half inch = one foot
three quarters inch = one foot
one foot one inch = one foot
one and one half inches = one foot
one and one half inches = one foot
one and one half inches = one foot

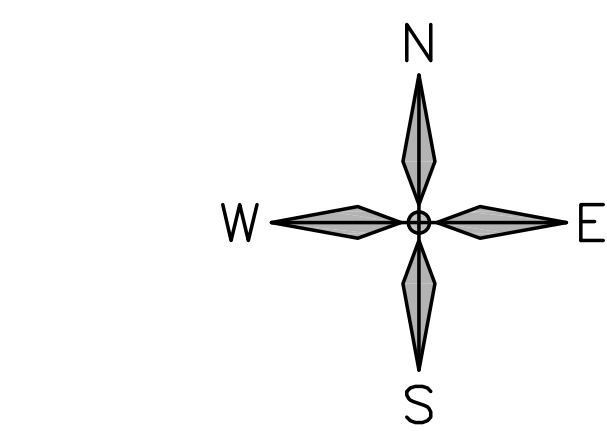
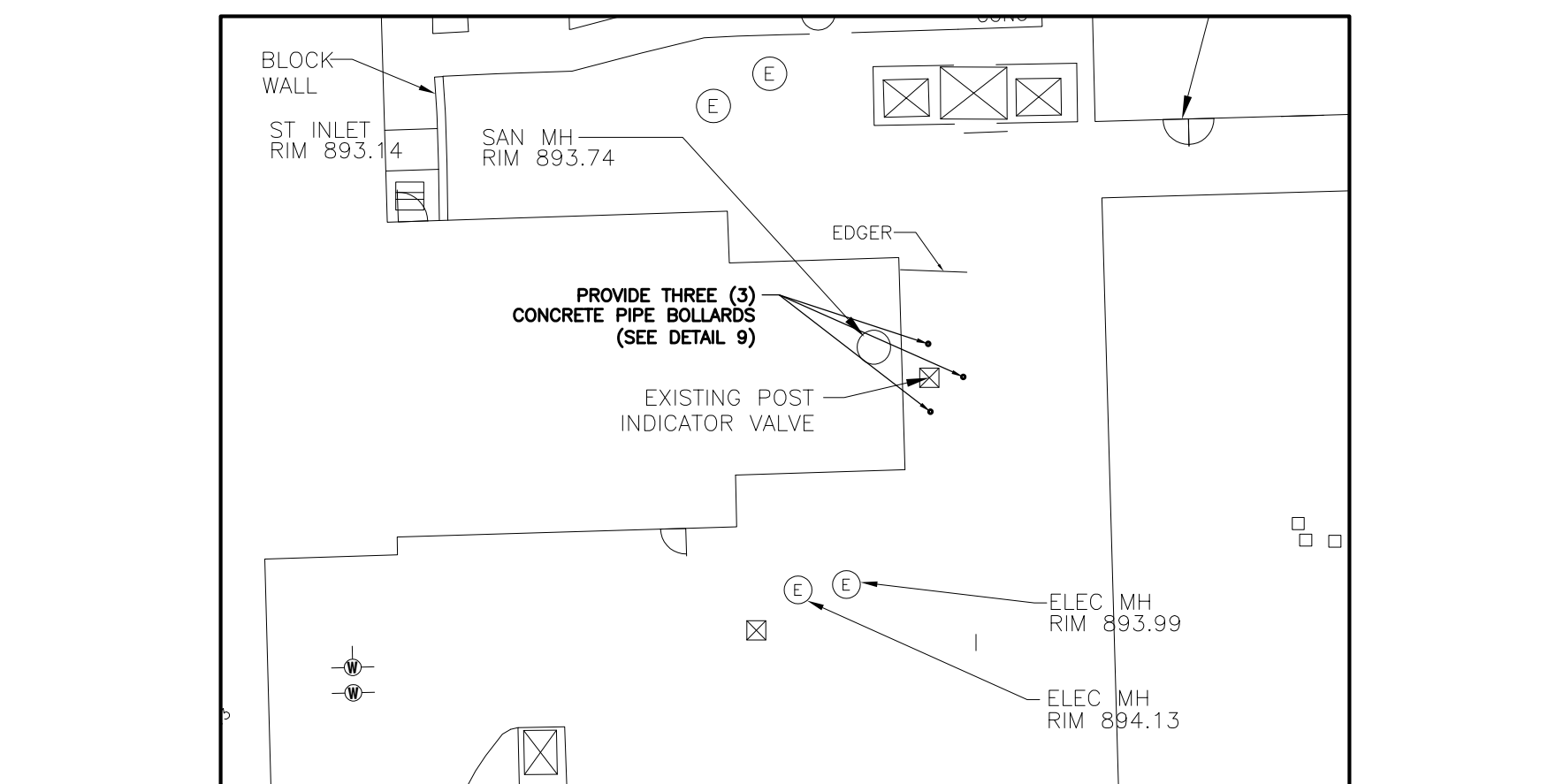
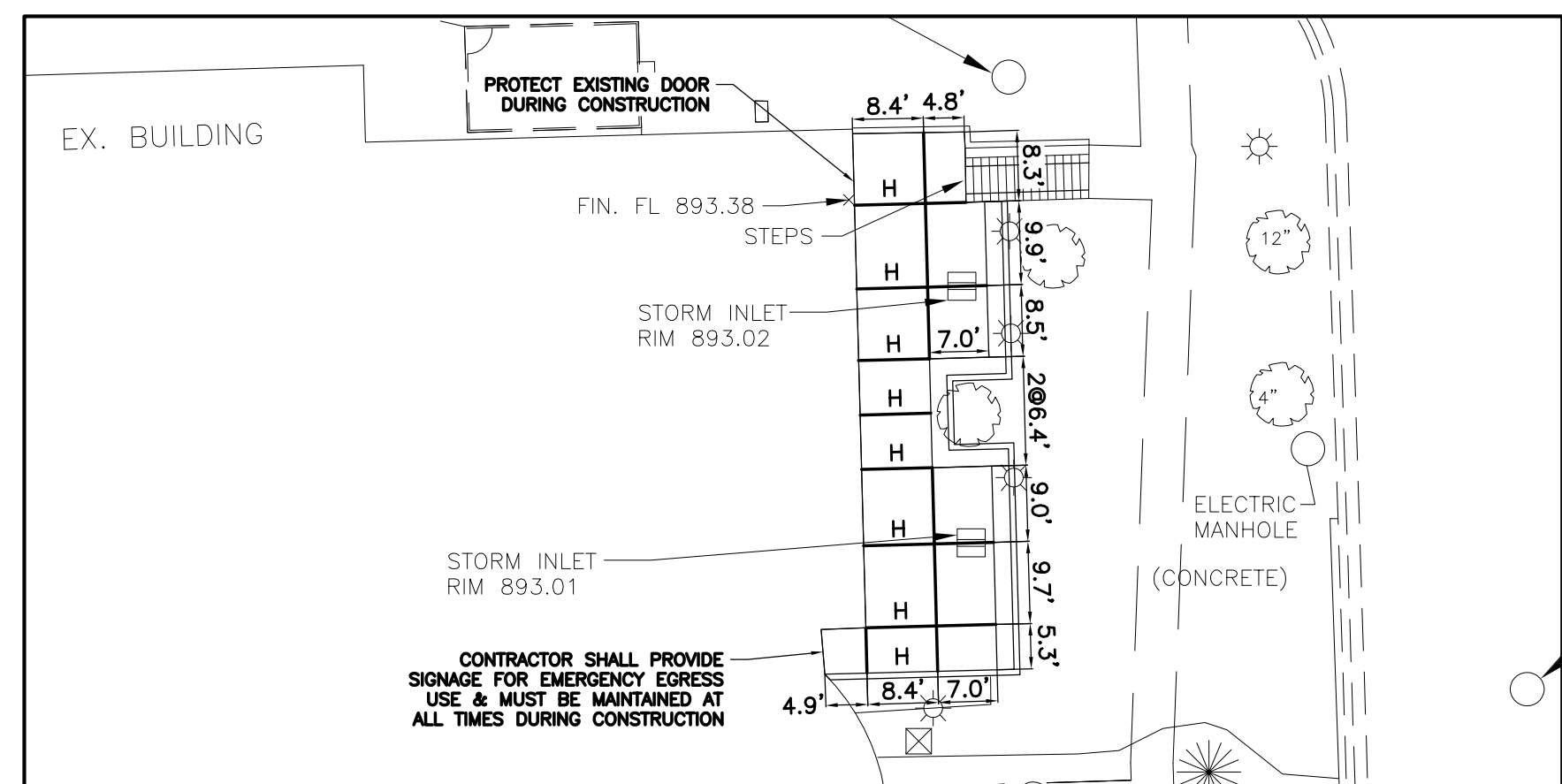
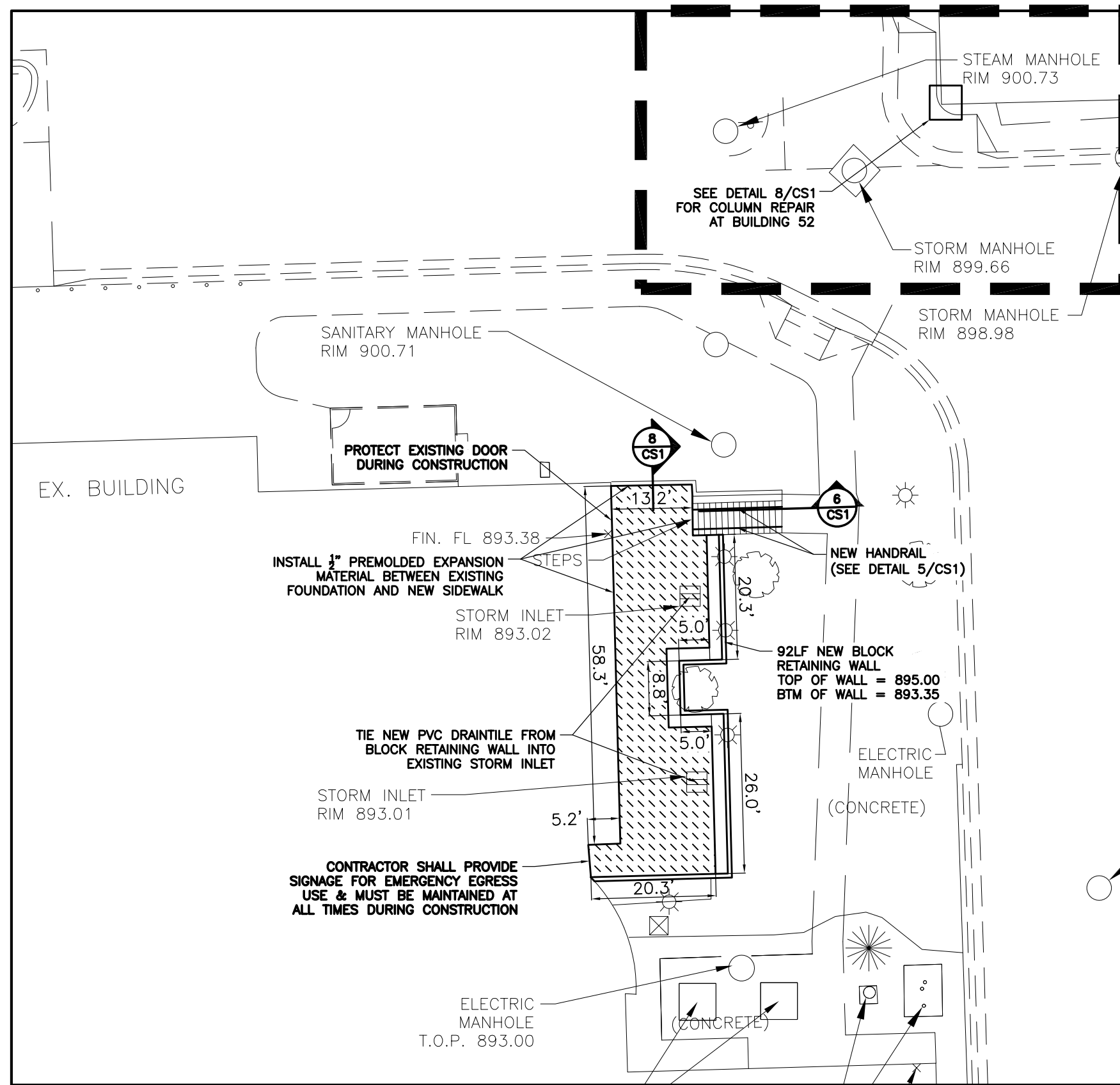
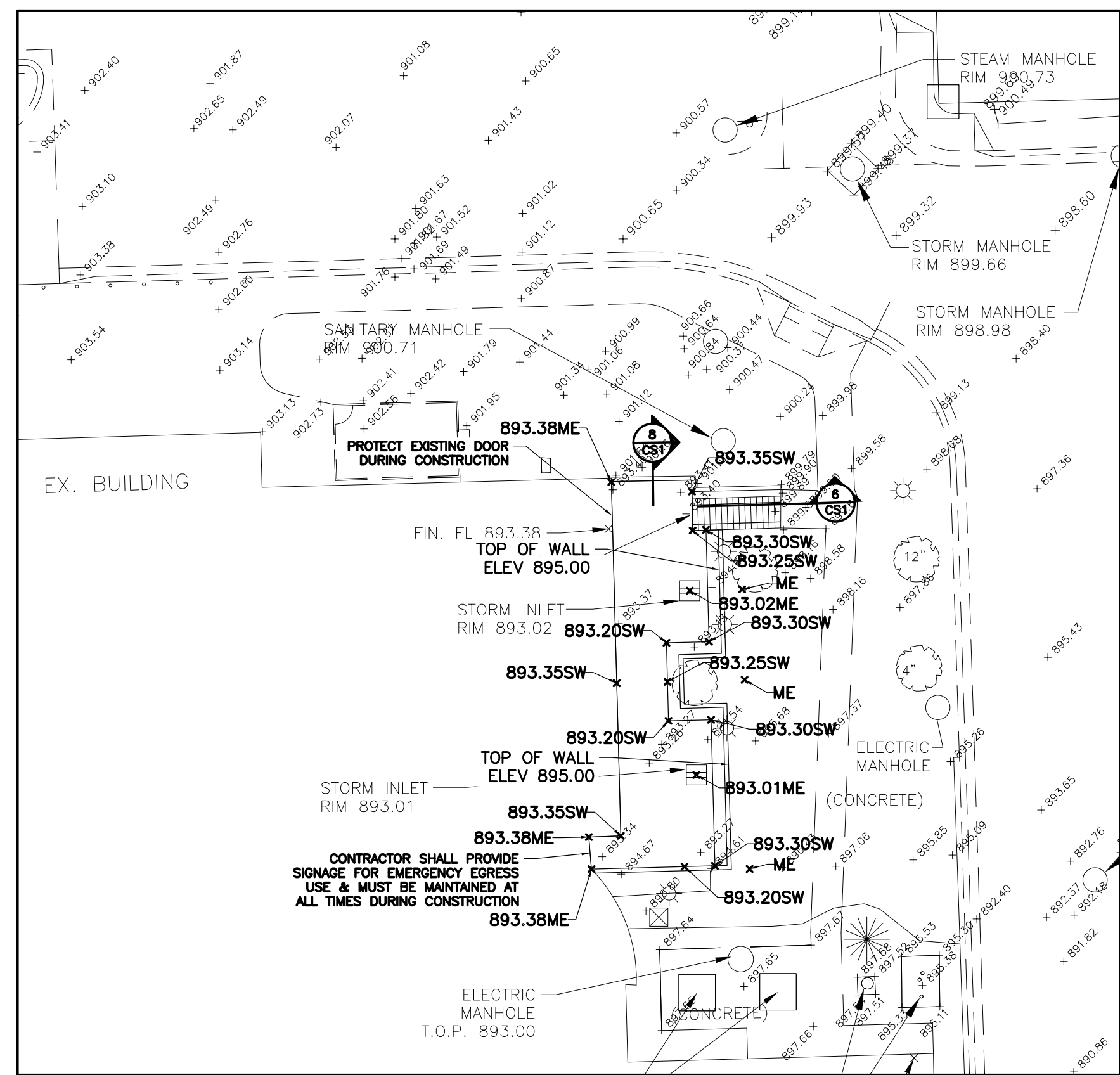
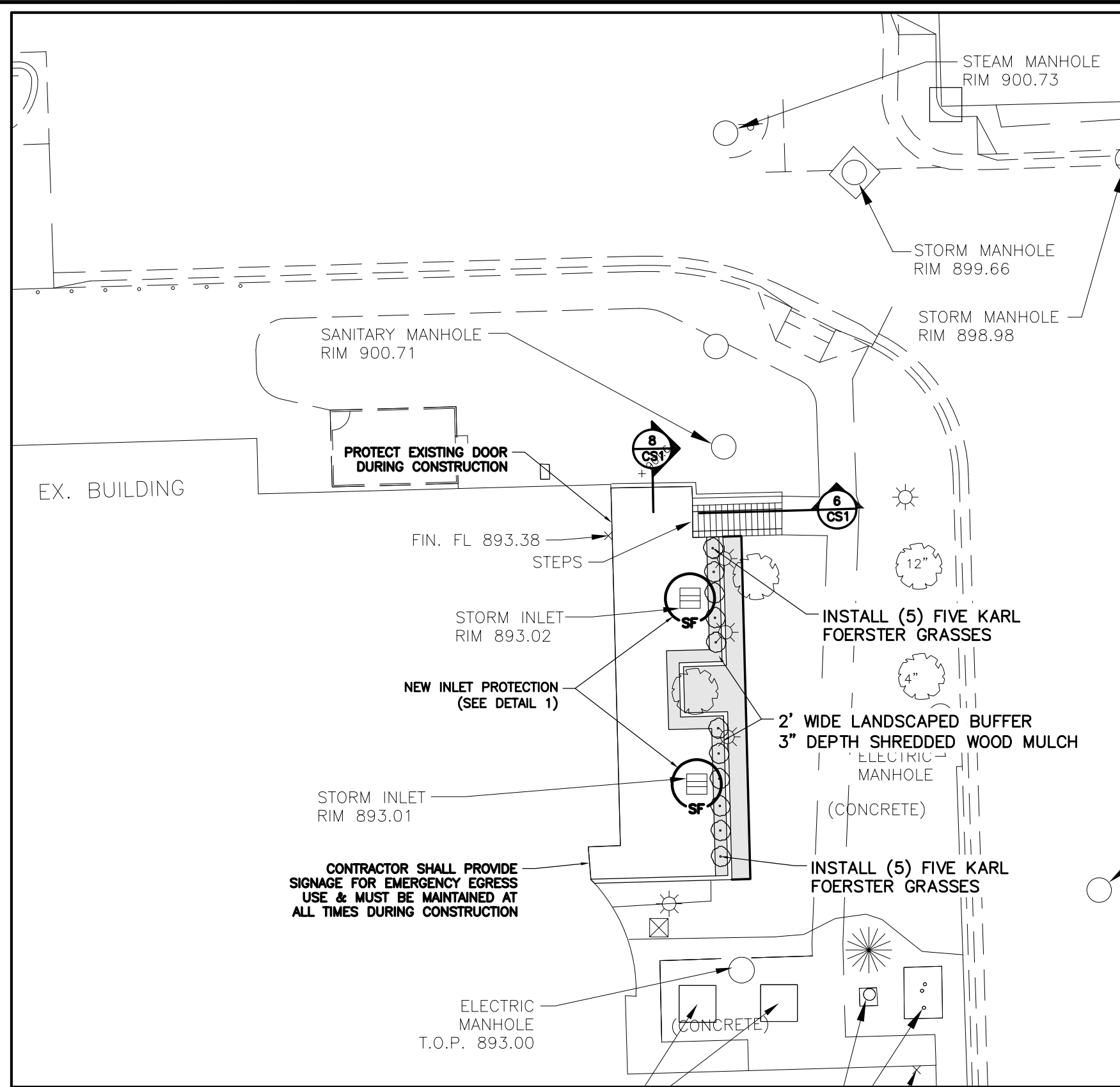
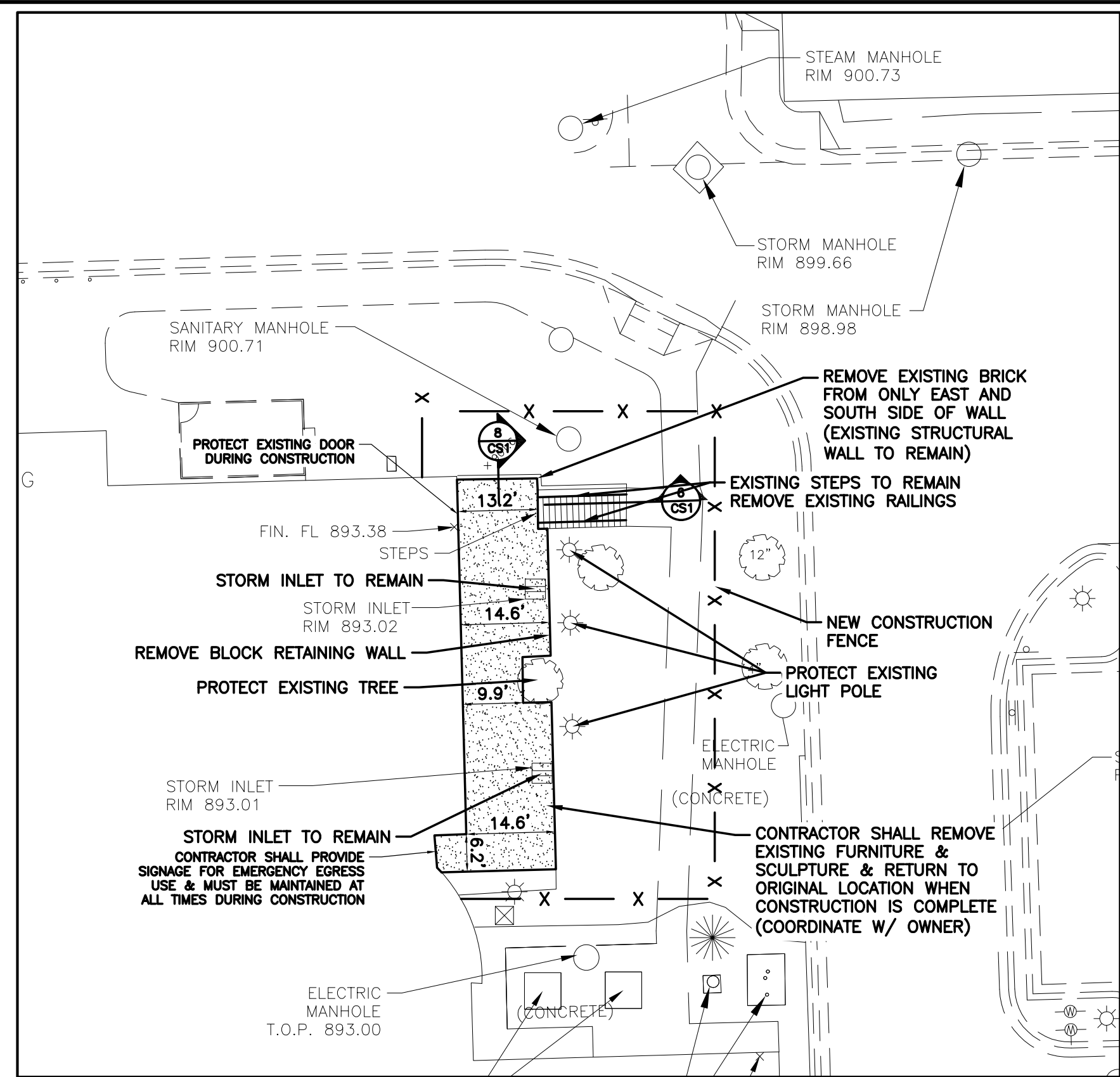


- GENERAL NOTES:**
1. SHEET SIZE FOR PROPER SCALE IS 30" X 42".
 2. SEE SHEET G-001 FOR GENERAL NOTES.
 3. DIMENSIONS ARE APPROXIMATIONS. IT IS THE RESPONSIBILITY OF THE CONTRACTOR TO FIELD VISIT THE PROJECT AND VERIFY EXISTING CONDITIONS/DIMENSIONS AND PROPOSED CONDITIONS. COORDINATE DEMOLITION BETWEEN ALL TRADES. NOTIFY COR IMMEDIATELY OF ANY CONFLICTS OR DISCREPANCIES DURING TUCKPOINTING AND SEALING AND CLEANING/PROTECT ANY LOUVERS, WINDOWS, HOODS, ETC.
 - 4.

- CAMPUS MAP LEGEND:**
- AREA OF CONSTRUCTION
 - CONTRACTOR LAYDOWN/STAGING AREA
 - AREA BREAKDOWN
 - CONTRACTOR HAUL ROUTE

- BUILDING NUMBER**
- 1 MEDICAL CENTER
 - 3 ADMINISTRATION OFFICE
 - 8 FLAGPOLE
 - 9 MEDICAL CENTER
 - 10 BOILER PLANT
 - 11 MAINTENANCE GARAGE
 - 12 WAREHOUSE
 - 13 LAUNDRY
 - 20 GATE WELL
 - 30 ADMINISTRATION OFFICE
 - 39 HIGH VOLTAGE SWITCHGEAR BLDG
 - 40 VBA REGIONAL OFFICE
 - 41 OXYGEN STORAGE TANK
 - 42 UND SCHOOL OF MEDICINE
 - 43 PICNIC SHELTER AND PATIO
 - 44 XCEL ENERGY BLDG (NATURAL GAS)
 - 46 MEDICAL CENTER
 - 50 COLD STORAGE BUILDING
 - 51 HRMS
 - 52 ADMINISTRATION OFFICE
 - 53 HAZMAT STORAGE BUILDING
 - 54 PANDEMIC FLU STORAGE BUILDING
 - 56 CHILLER PLANT

CAMPUS MAP		CONSULTANTS:		ARCHITECT/ENGINEERS:		Drawing Title		Project Title		Project Number		Office of Construction and Facilities Management Department of Veterans Affairs	
		MBN ENGINEERING 503 7TH STREET NORTH, SUITE 200 FARGO, NORTH DAKOTA 58102 PH: (701) 478-6336 FAX: (701) 478-6340		FOURFRONT DESIGN, INC. 517 7TH STREET RAPID CITY, SOUTH DAKOTA 57701 PH: (605) 342-9470 FAX: (605) 342-2377 WWW.FOURFRONTDESIGN.COM		CAMPUS MAP / CONTRACTOR STAGING		REPAIR EXTERIOR FINISHES		437-21-111			
Revisions:		Date		2481.A15		Approved: Project Director CLIFFORD HALVORSON		Location VA HCS FARGO, ND		Building Number			
								Date 11/10/2021		Checked KP		Drawing Number G-002	
										Dwg. 3 of 39			

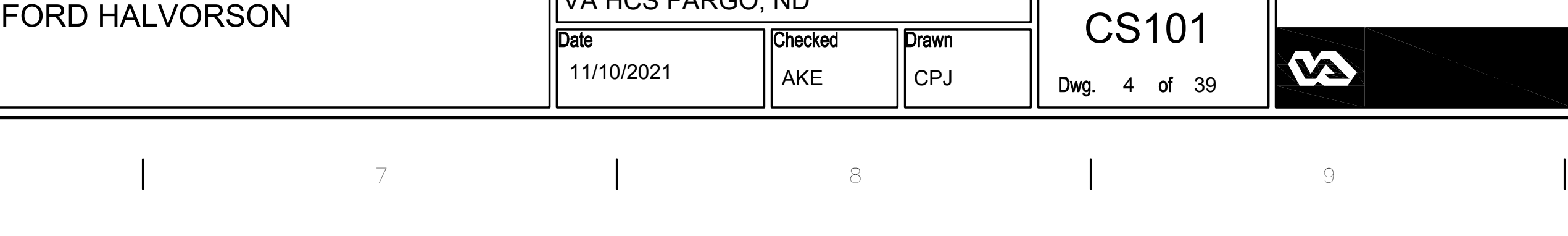
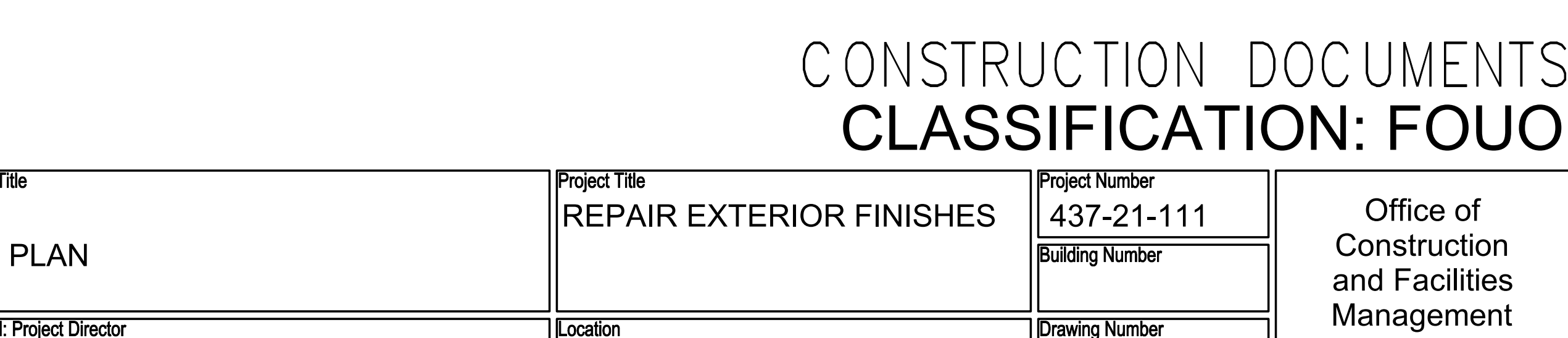
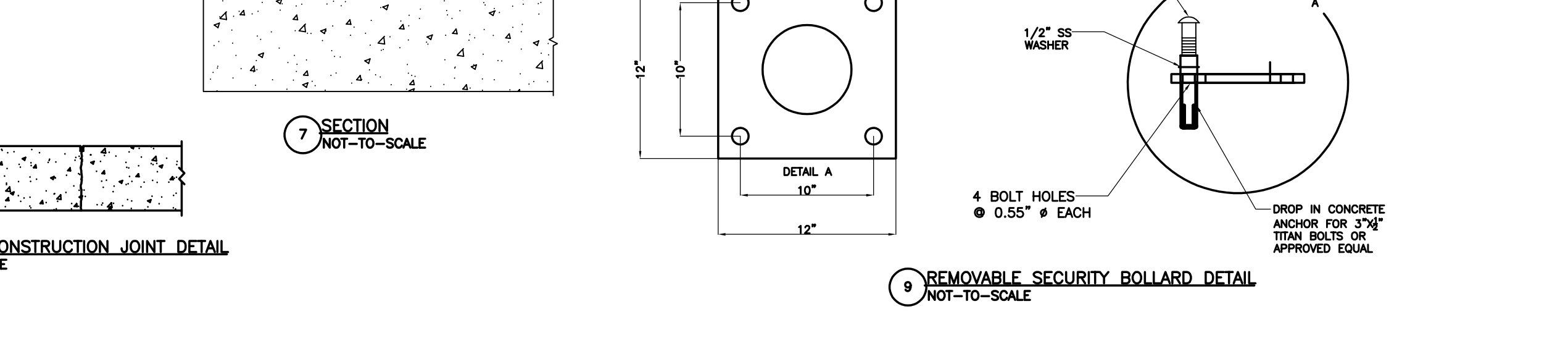
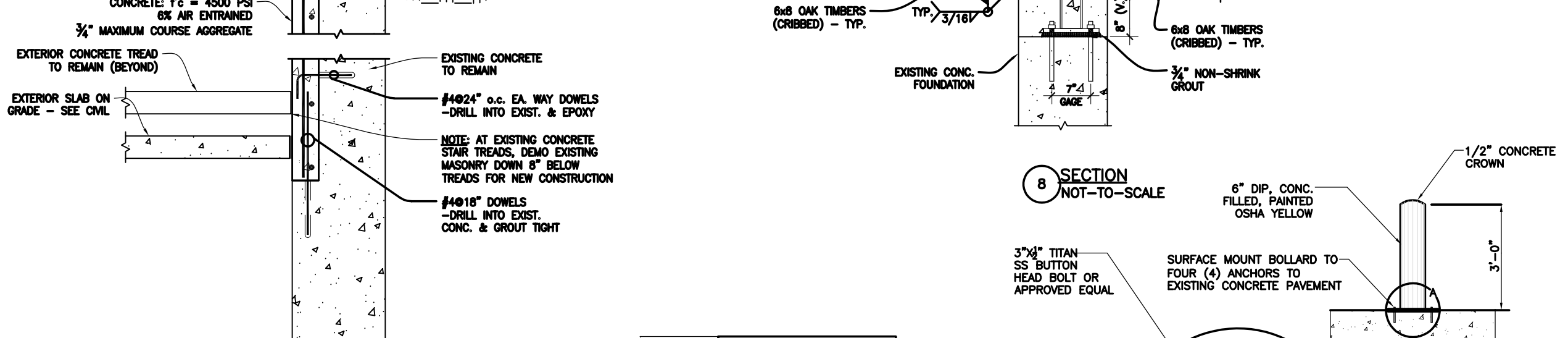
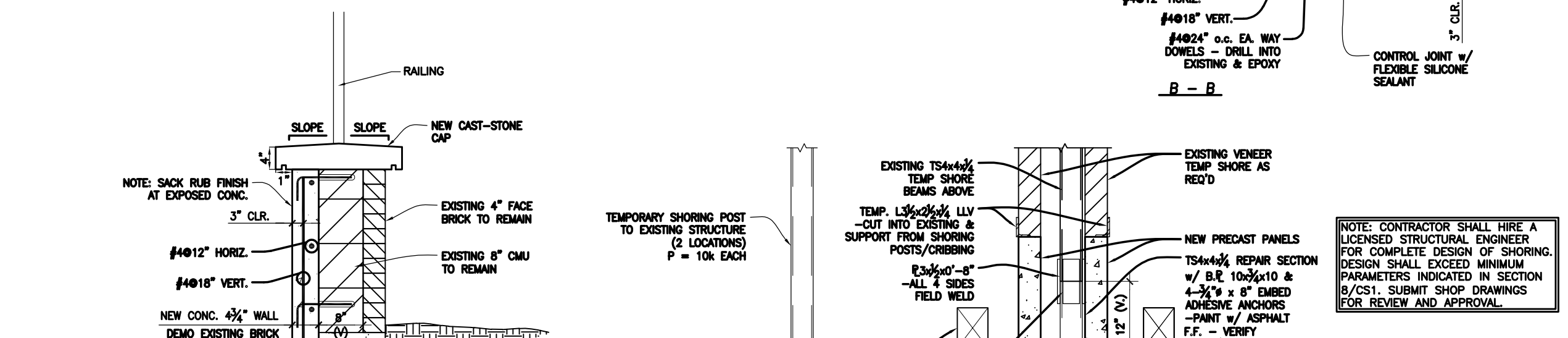
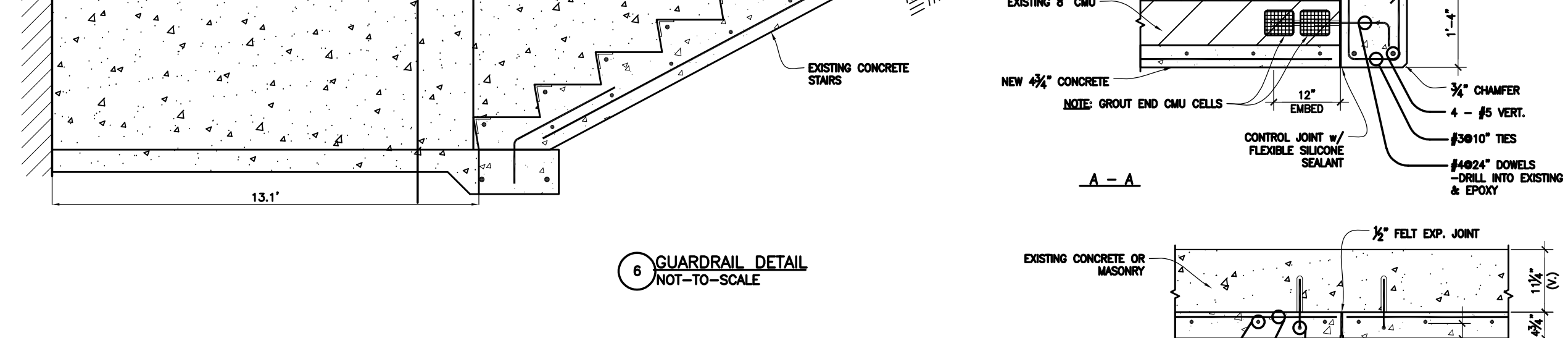
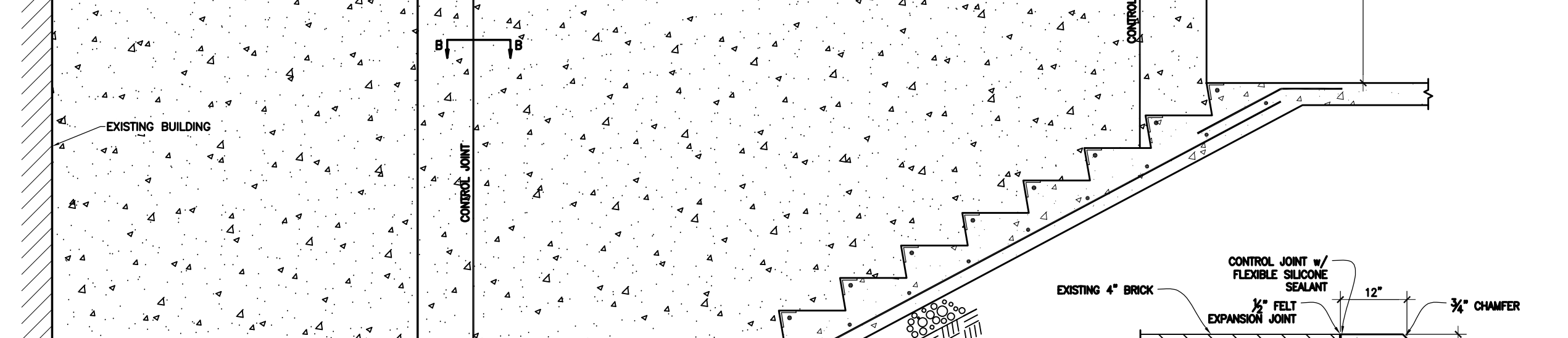
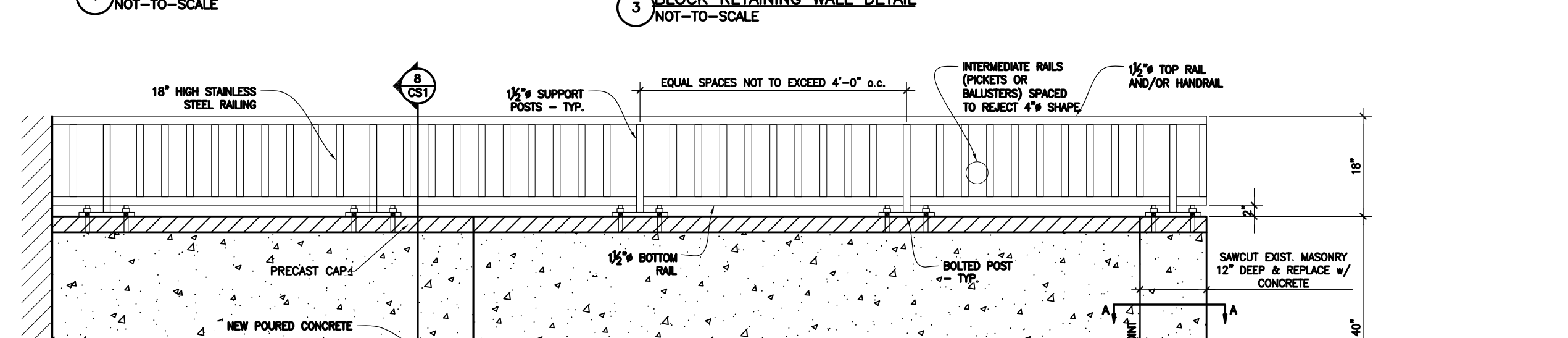
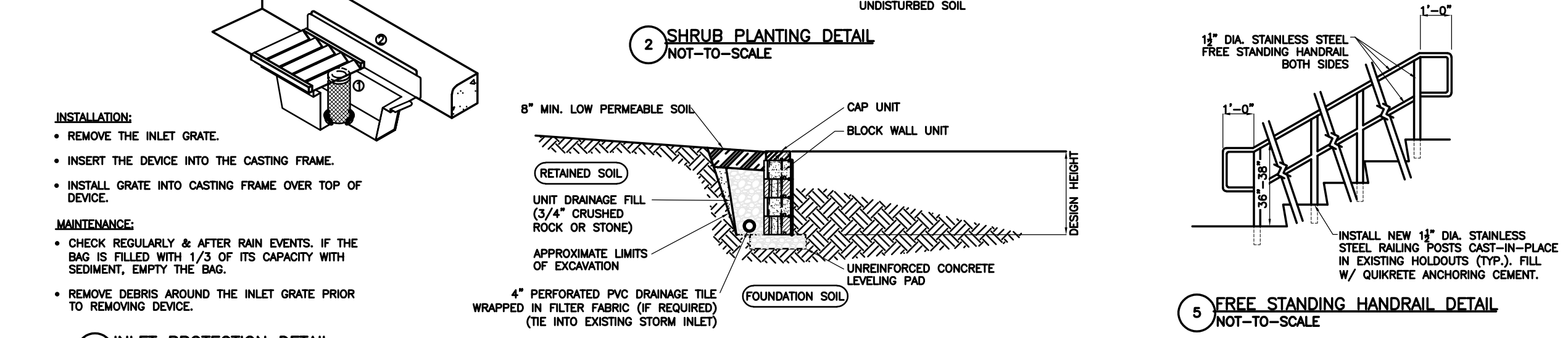
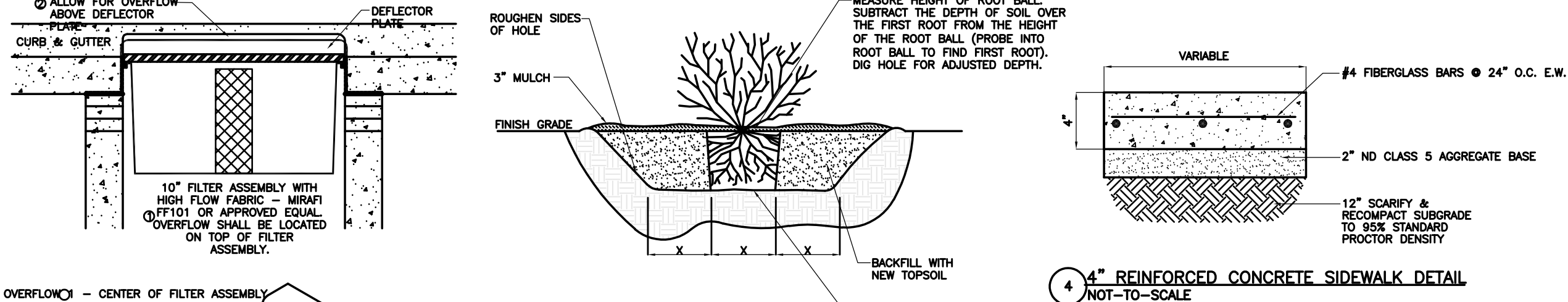


SYMBOL LEGEND:

- EXISTING STORM INLET
- EXISTING MANHOLE
- EXISTING GATE VALVE
- EXISTING LIGHT POLE
- EXISTING TREE
- EXISTING SPOT ELEVATION
- TEMPORARY SECURITY FENCE
- REMOVE EXISTING CONCRETE PAVEMENT (FIELD VERIFY THICKNESS)
- NEW SHREDDED WOOD MULCH
- NEW INLET PROTECTION
- NEW PLANT
- 893.30FG NEW FINISHED GRADE ELEVATION
- 893.20SW NEW SIDEWALK ELEVATION
- 899.89ME MATCH EXISTING ELEVATION
- NEW 4" REINFORCED CONCRETE SIDEWALK
- H NEW CONSTRUCTION JOINT

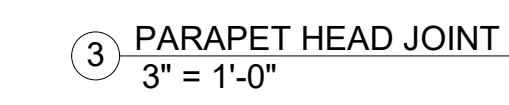
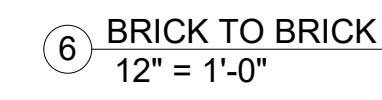
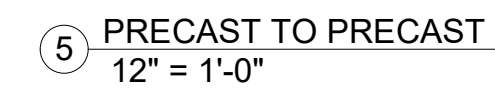
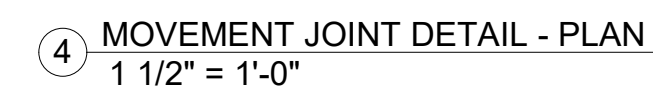
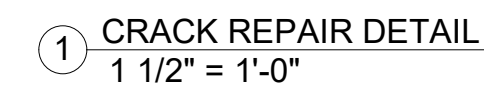
PLAN NOTES:

- CONTRACTOR SHALL LOCATE ALL UTILITIES PRIOR TO CONSTRUCTION. NORTH DAKOTA ONE CALL WILL ONLY LOCATE THEIR MAINS AND WILL NOT LOCATE PRIVATE UTILITIES ON THIS SITE. THE VA IS NOT RESPONSIBLE FOR LOCATING ANY ON SITE UTILITIES.
- CONTRACTOR SHALL FIELD VERIFY LOCATION AND ELEVATION OF ALL EXISTING/PROPOSED UTILITY CROSSINGS, AND WHERE EXISTING UTILITIES CONNECT INTO NEW UTILITY MAINS.
- ALL PAVEMENT MARKED FOR DEMOLITION SHALL BE FULL DEPTH SAW CUT PRIOR TO REMOVAL.
- CONTRACTOR SHALL KEEP ACCESS OPEN TO ALL EXISTING DOORS, FIRE EXITS, AND LOADING DOCKS DURING ALL PHASES OF CONSTRUCTION. IF TEMPORARY CLOSURES ARE REQUIRED, COORDINATE WITH VHA ADMINISTRATION A MINIMUM OF 2 WEEKS IN ADVANCE.
- CONTRACTOR IS REQUIRED TO MAINTAIN ONE DRIVING LANE OPEN AT ALL TIMES. IF ROAD CLOSURE IS REQUIRED, COORDINATE WITH VHA ADMINISTRATION A MINIMUM OF 2 WEEKS IN ADVANCE.
- CONTRACTOR IS RESPONSIBLE FOR GENERAL TRAFFIC CONTROL TO ALLOW FOR PUBLIC ACCESS THROUGH THE PROJECT SITE. CONTRACTOR SHALL PROVIDE ADEQUATE SIGNS FOR PUBLIC SAFETY AND TRAFFIC CONTROL. CONTRACTOR IS RESPONSIBLE TO KEEP ACCESS TO THE EAST & NORTH LOADING DOCK OPEN FOR DAILY DELIVERIES & COORDINATE ANY RESTRICTIONS WITH THE VA ADMINISTRATION.
- ALL GRASSED AREAS DISTURBED BY CONSTRUCTION SHALL HAVE TOPSOIL (6" DEPTH), GRADED, SEEDED, AND HYDRO-MULCHED.



CONSTRUCTION DOCUMENTS CLASSIFICATION: FOUO

<p>Revisions:</p>	<p>CONSULTANTS:</p> <p>MBN ENGINEERING MECHANICAL * ELECTRICAL * CIVIL 503 7TH ST. N., SUITE 200 FARGO, ND 58102 PHONE: 701.478.6336 FAX: 701.478.6340</p>	<p>REGISTERED PROFESSIONAL ENGINEER NORTH DAKOTA DATE 11-10-21</p>	<p>ARCHITECT/ENGINEERS:</p> <p>FOURFRONT DESIGN INC. 517 7TH STREET RAPID CITY, SOUTH DAKOTA 57701 PH: (605) 342-9470 FAX: (605) 342-2377 WWW.FOURFRONTDESIGN.COM</p>	<p>Drawing Title</p> <p>SITE PLAN</p> <p>Approved: Project Director</p> <p>CLIFFORD HALVORSON</p>	<p>Project Title</p> <p>REPAIR EXTERIOR FINISHES</p> <p>Location</p> <p>VA HCS FARGO, ND</p>	<p>Project Number</p> <p>437-21-111</p> <p>Building Number</p> <p>CS101</p>	<p>Office of Construction and Facilities Management</p>
-------------------	---	--	--	---	--	---	---



11/9/2021 11:07:15 AM

one eighth inch = one foot
0 4 8 16

one quarter inch = one foot
0 4 8

three eighths inch = one foot
0 4 8

one half inch = one foot
0 4

three quarters inch = one foot
0 2 4

one foot one inch = one foot
0 6 12

2

one and one half inches = one three inches = one foot
0 6 12

one and one half inches = one three inches = one foot
0 6 12

CAMPUS MAP AND AREAS OF ALTERNATES NTS



GENERAL NOTES:

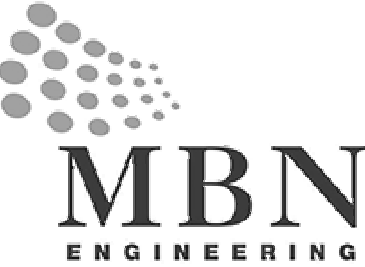
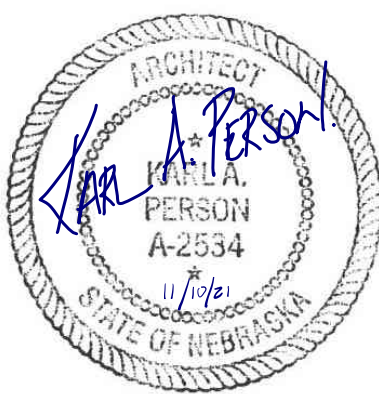

1. SHEET SIZE FOR PROPER SCALE IS 30" X 42".
2. SEE SHEET G-001 FOR GENERAL NOTES.
3. DIMENSIONS ARE APPROXIMATIONS. IT IS THE RESPONSIBILITY OF THE CONTRACTOR TO FIELD VISIT THE PROJECT AND VERIFY EXISTING CONDITIONS/DIMENSIONS AND PROPOSED CONDITIONS. COORDINATE DEMOLITION BETWEEN ALL TRADES. NOTIFY COR IMMEDIATELY OF ANY CONFLICTS OR DISCREPANCIES.
4. DURING TUCKPOINTING AND SEALING AND CLEANING PROTECT ANY LOUVERS, WINDOWS, HOODS, ETC.

AREA OF ALTERNATE
LEGEND

- AREA OF ALTERNATE 1
- AREA OF ALTERNATE 2
- AREA OF ALTERNATE 3
- AREA OF ALTERNATE 4

NOTE: AREAS ARE SHOWN IN WHITE ON PLAN FOR LEGIBILITY

CONSTRUCTION DOCUMENTS

<div>Revisions:</div> <div>Date</div>		<div>CONSULTANTS:</div> <div><div><div>MBN ENGINEERING</div></div><div>503 7TH STREET NORTH, SUITE 200 FARGO, NORTH DAKOTA 58102 PH: (701) 478-6336 FAX: (701) 478-6340</div></div>		<div></div>		<div>ARCHITECT/ENGINEERS:</div> <div><div><div>FOURFRONT DESIGN INC.</div></div><div>517 7TH STREET RAPID CITY, SOUTH DAKOTA 57701 PH: (605) 342-9470 FAX: (605) 342-2377 WWW.FOURFRONTDESIGN.COM</div></div>		<div>Drawing Title</div> <div>ROOF PLAN IMAGE</div>		<div>Project Title</div> <div>REPAIR EXTERIOR FINISHES</div>		<div>Project Number</div> <div>437-21-111</div>		<div>Office of Construction and Facilities Management</div>	
						<div>Approved: Project Director</div> <div>CLIFFORD HALVORSON</div>		<div>Location</div> <div>VA HCS FARGO, ND</div>		<div>Drawing Number</div> <div>A-130</div>		<div>Department of Veterans Affairs</div>			
								<div>Date</div> <div>11/10/2021</div>		<div>Checked</div> <div>KP</div>		<div>Drawn</div> <div>TLB</div>		<div>Dwg. 6 of 39</div>	
						<div>2481.A15</div>									

GENERAL NOTES:

1. SHEET SIZE FOR PROPER SCALE IS 30" X 42".
2. SEE SHEET C-001 FOR GENERAL NOTES.
3. DIMENSIONS ARE APPROXIMATIONS. IT IS THE RESPONSIBILITY OF THE CONTRACTOR TO FIELD VISIT THE PROJECT AND VERIFY EXISTING CONDITIONS/DIMENSIONS AND PROPOSED CONDITIONS. COORDINATE DEMOLITION BETWEEN ALL TRADES. NOTIFY CSR IMMEDIATELY OF ANY CONFLICTS OR DISCREPANCIES.
4. DURING TUCKPOINTING AND SEALING AND CLEANING, PROTECT ANY LOUVERS, WINDOWS, HOODS, ETC.

NEW WORK NOTES:

NOTE: NOT ALL WORK NOTES ARE APPLICABLE TO EACH PLAN SHEET.

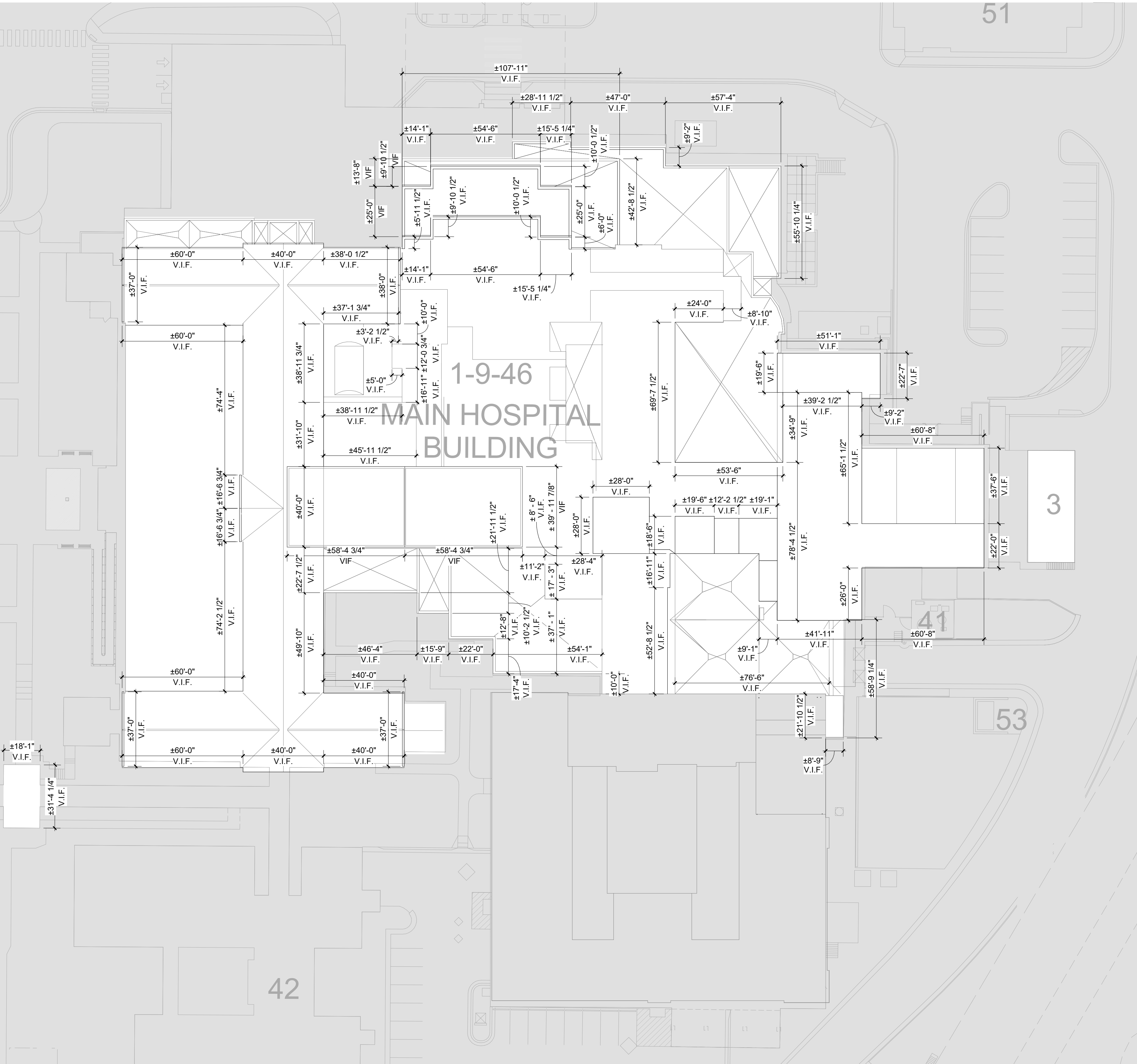
1. BRICK MASONRY WALL, PATCH AND REPAIR ALL BRICK AND MORTAR AS IDENTIFIED IN PHOTOS. COLOR TO MATCH ADJACENT EXISTING BRICK AND MORTAR.

SHEET SPECIFIC NOTES:

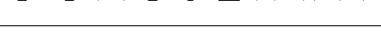

1. ROOF AND PENETRATIONS SHALL BE WEATHER TIGHT WHEN COMPLETED.
2. ALL ROOF FLASHING SHALL CONFORM TO THE SHEET METAL AND AIR CONDITIONING CONTRACTORS' NATIONAL ASSOCIATION (SMACNA) FOR DETAILING AND WEATHER PROTECTION.

ROOF LEGEND:

AREA OF WORK NOT IN THE SCOPE. EXISTING TO REMAIN.



ROOF PLAN - DIMENSIONS - FIELD VERIFY

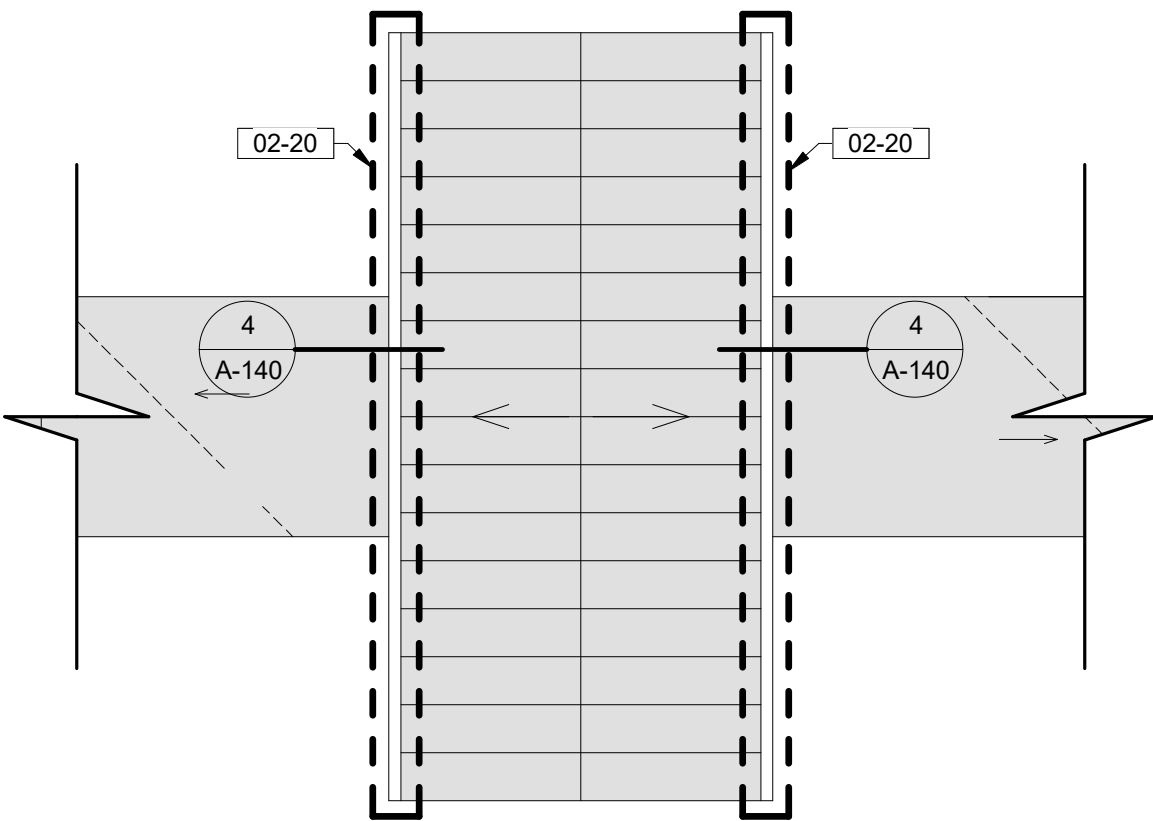
		CONSULTANTS:		ARCHITECT/ENGINEERS:		Drawing Title		Project Title		Project Number		Office of Construction and Facilities Management	
		 MBN ENGINEERING 503 7TH STREET NORTH, SUITE 200 FARGO, NORTH DAKOTA 58102 PH: (701) 478-6336 FAX: (701) 478-6340		 CLIFFORD HALVORSON A-2534 STATE OF NORTH DAKOTA		ROOF PLAN - PRECAST AND LIMESTONE COPING		REPAIR EXTERIOR FINISHES		437-21-111			
						Approved: Project Director CLIFFORD HALVORSON		Location VA HCS FARGO, ND		Building Number			
Revisions:		Date		Date		Checked		Drawn		Drawing Number		Department of Veterans Affairs	
						11/10/2021		KP		A-131			
								Dwg. 7 of 39					

GENERAL NOTES:

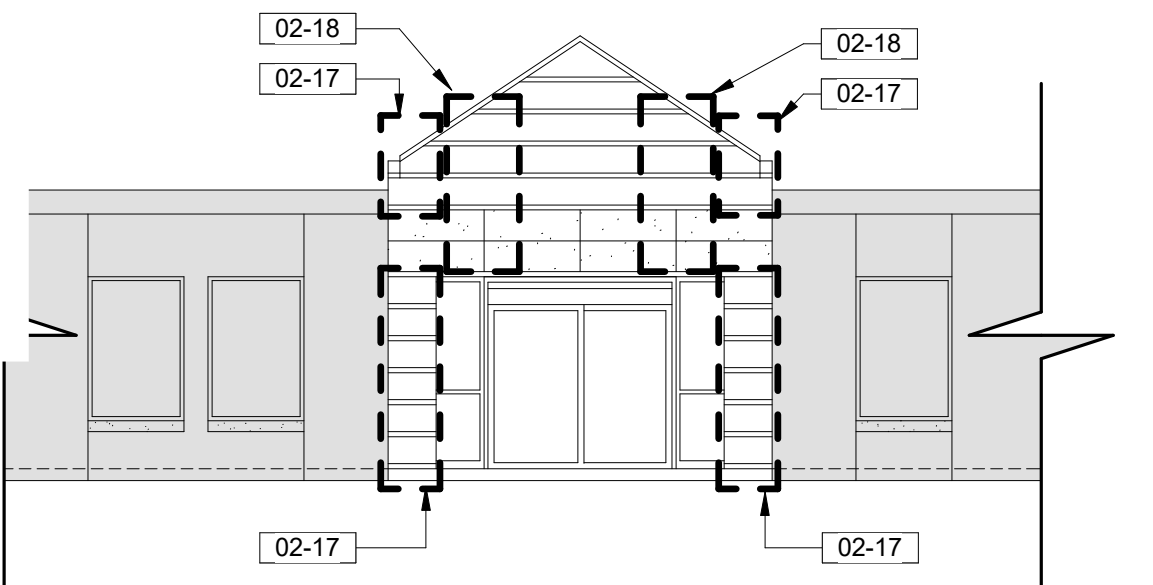
1. SHEET SIZE FOR PROPER SCALE IS 30" X 42".
2. SEE SHEET G-001 FOR GENERAL NOTES.
3. DIMENSIONS ARE APPROXIMATIONS. IT IS THE RESPONSIBILITY OF THE CONTRACTOR TO FIELD VISIT THE PROJECT AND VERIFY EXISTING CONDITIONS/DIMENSIONS AND PROPOSED CONDITIONS. COORDINATE DEMOLITION BETWEEN ALL TRADES. NOTIFY CDR IMMEDIATELY OF ANY CONFLICTS OR DISCREPANCIES.
4. DURING TUCKPOINTING AND SEALING AND CLEANING, PROTECT ANY LOUVERS, WINDOWS, HOODS, ETC.

KEYNOTES:

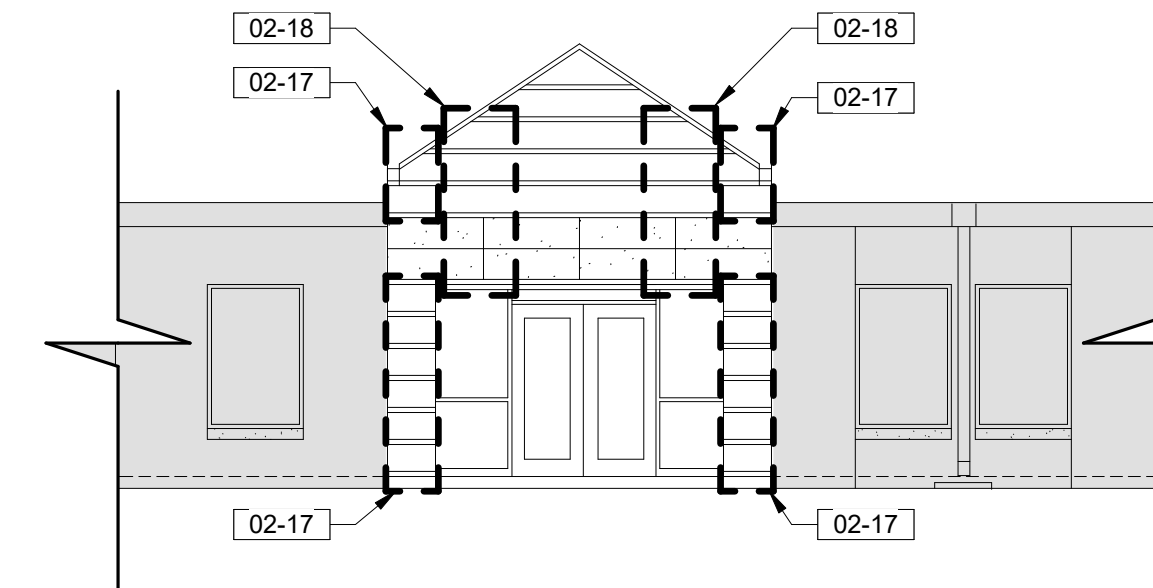
- 02-17 REMOVE AND REPLACE DAMAGED BRICK
02-18 TUCKPOINT BRICK AT CRACKED MORTAR JOINTS.
02-20 REMOVE METAL ROOFING. REMOVE CONNECTIONS TO REMAINING ROOF TO ALLOW FOR NEW SINGLE PIECE METAL ROOF TO BE INSTALLED 12" UNDER EXISTING ROOF.



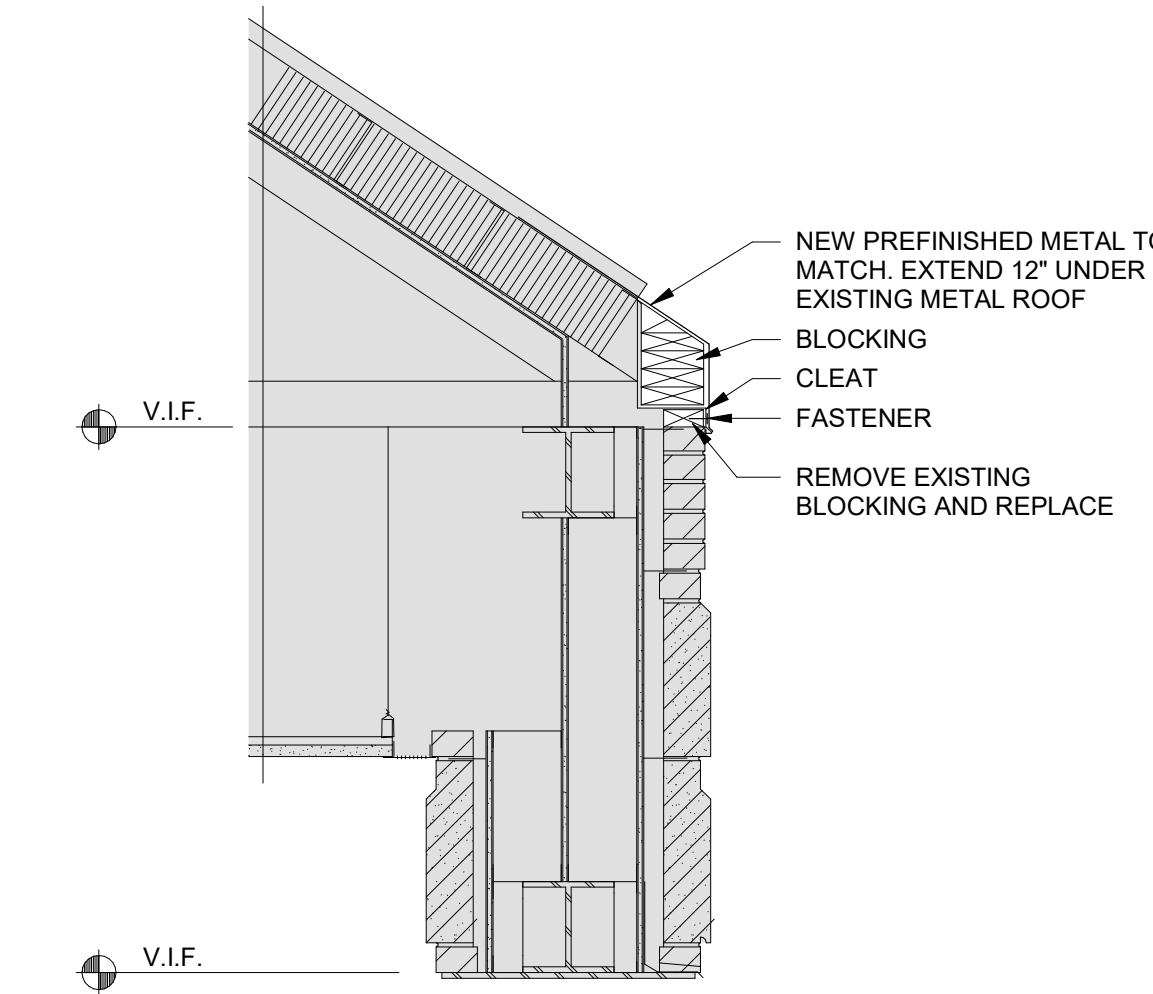
1 BUILDING 40 ROOF PLAN
1/8" = 1'-0"



2 BUILDING 40 SOUTH ELEVATION
1/8" = 1'-0"



3 BUILDING 40 NORTH ELEVATION
1/8" = 1'-0"



4 BUILDING 40 ROOF - DETAIL
3/4" = 1'-0"



BUILDING 40 ENTRY - IMAGE 1



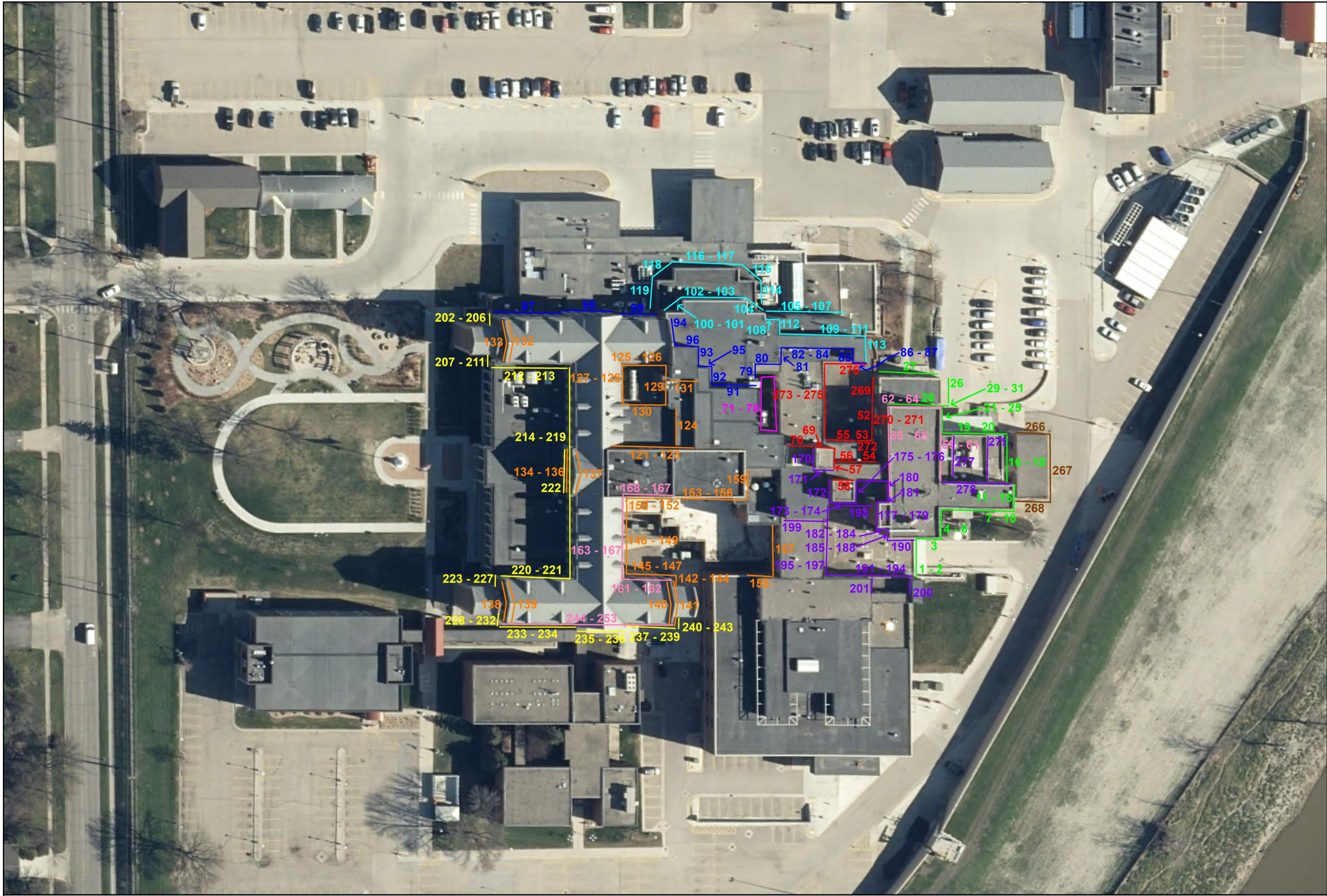
BUILDING 40 ENTRY - IMAGE 2



BUILDING 40 ENTRY - IMAGE 3

CONSTRUCTION DOCUMENTS

<div>Revisions:</div> <div>Date</div>		<div>CONSULTANTS:</div> <div><div>MBN ENGINEERING</div><div>503 7TH STREET NORTH, SUITE 200 FARGO, NORTH DAKOTA 58102 PH: (701) 478-6336 FAX: (701) 478-6340</div></div>		<div><div>FOURFRONT DESIGN, INC.</div><div>517 7TH STREET RAPID CITY, SOUTH DAKOTA 57701 PH: (605) 342-9470 FAX: (605) 342-2377 WWW.FOURFRONTDESIGN.COM</div></div> <div>2481.A15</div>		<div>Drawing Title</div> <div>BLDG 40 PLAN, ELEV, DETAILS</div> <div>Approved: Project Director</div> <div>CLIFFORD HALVORSON</div>		<div>Project Title</div> <div>REPAIR EXTERIOR FINISHES</div> <div>Location</div> <div>VA HCS FARGO, ND</div> <div>Date</div> <div>11/10/2021</div> <div>Checked</div> <div>Checker</div> <div>Drawn</div> <div>Author</div>		<div>Project Number</div> <div>437-21-111</div> <div>Building Number</div> <div></div> <div>Drawing Number</div> <div>A-140</div> <div>Dwg. 8 of 39</div>		<div>Office of Construction and Facilities Management</div> <div>Department of Veterans Affairs</div>	
---------------------------------------	--	--	--	---	--	---	--	---	--	---	--	---	--



- SHEET SIZE FOR PROPER SCALE IS 30" X 42".
SEE SHEET G-001 FOR GENERAL NOTES.
DIMENSIONS ARE APPROXIMATIONS. IT IS THE
RESPONSIBILITY OF THE CONTRACTOR TO FIELD
VISIT THE PROJECT AND VERIFY EXISTING
CONDITIONS/DIMENSIONS AND PROPOSED
CONDITIONS. COORDINATE DEMOLITION BETWEEN
ALL TRADES. NOTIFY COR IMMEDIATELY OF ANY
CONFLICTS OR DISCREPANCIES.
DURING TUCKPOINTING AND SEALING AND
CLEANING PROTECT ANY LOUVERS, WINDOWS,
HOODS, ETC.

KEYNOTES:

- | | |
|-------|--|
| 02-04 | CUT 3/8" JOINT THE FULL DEPTH OF THE BRICK AND FILL WITH BAKER ROD AND SEALER. SEE SPECIFICATION FOR COLOR. |
| 02-05 | REMOVE EXISTING MATERIAL FROM THE PRECAST JOINT. CLEAN PRECAST AND APPLY SEALER INSTALLED BAKER ROD AND SEALANT. COLOR TO BE CUSTOM COLOR TO MATCH PRECAST. SEE DETAIL 3/A-000 |
| 02-12 | CLEAN PRECAST/LIMESTONE AND APPLY SEALER |
| 02-16 | EXISTING CONSTRUCTION TO BE PROTECTED IN PLACE. |
| 02-19 | REMOVE AND REPLACE DAMAGED BRICK. |
| 02-21 | REMOVE EXISTING MATERIAL FROM THE PRECAST JOINT. CLEAN PRECAST AND APPLY SEALER. INSTALL BAKER ROD AND SEALANT. COLOR TO BE CUSTOM COLOR TO MATCH PRECAST. SEE DETAIL 7/A-000. |
| 04-02 | SEE DETAIL 2/A-000 AND 4/A-000 FOR MOVEMENT JOINT |



IMAGE 001 - GREEN



IMAGE 006 - GREEN

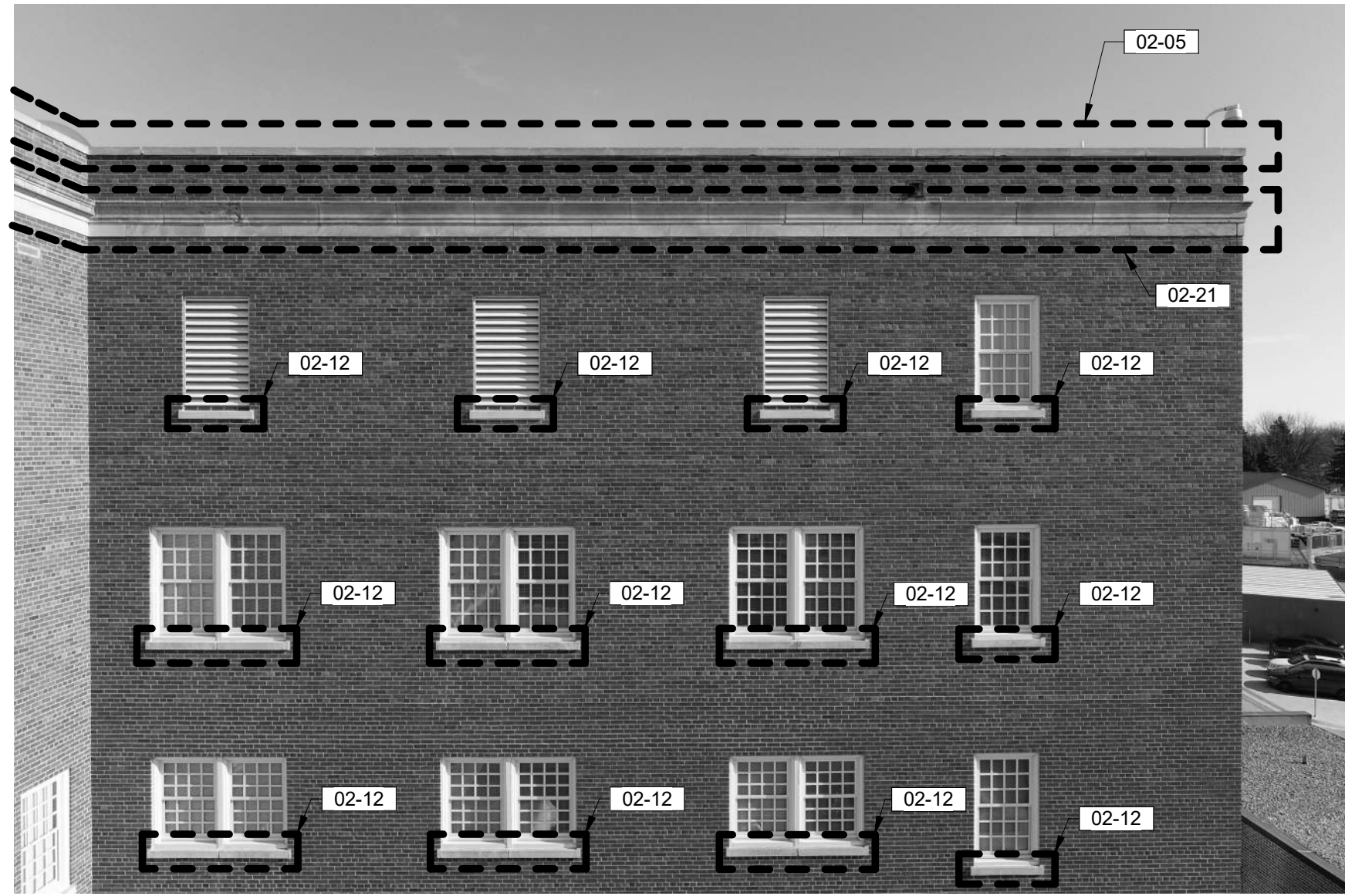


IMAGE 007 - GREEN



IMAGE 002 - GREEN



IMAGE 005 - GREEN



IMAGE 008 - GREEN



IMAGE 003 - GREEN



IMAGE 004 - GREEN



IMAGE 009 - GREEN



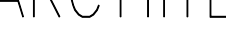
		C CONSULTANTS:  <div> MBN ENGINEERING 503 7TH STREET NORTH, SUITE 200 FARGO, NORTH DAKOTA 58102 PH: (701) 478-6336 FAX: (701) 478-6340 </div>				ARCHITECT/ENGINEERS:  <div> FOURFRONT DESIGN, INC. 517 7TH STREET RAPID CITY, SOUTH DAKOTA 57701 PH: (605) 342-9470 FAX: (605) 342-2377 WWW.FOURFRONTDESIGN.COM </div>		<div>2481.A15</div>		<div>Drawing Title</div> <div>DRONE IMAGES GREEN</div> <div>Approved: Project Director</div> <div>CLIFFORD HALVORSON</div>		<div>Project Title</div> <div>REPAIR EXTERIOR FINISHES</div> <div>Location</div> <div>VA HCS FARGO, ND</div> <div>Date</div> <div>11/10/2021</div> <div>Checked</div> <div>KP</div> <div>Drawn</div> <div>TLB</div>		<div>Project Number</div> <div>437-21-111</div> <div>Building Number</div> <div></div> <div>Drawing Number</div> <div>A-401</div> <div>Dwg. 10 of 39</div>		<div>Office of Construction and Facilities Management</div> <div>Department of Veterans Affairs</div>	
<div>Revisions:</div>		<div>Date</div>															



IMAGE 010 - GREEN



IMAGE 011 - GREEN

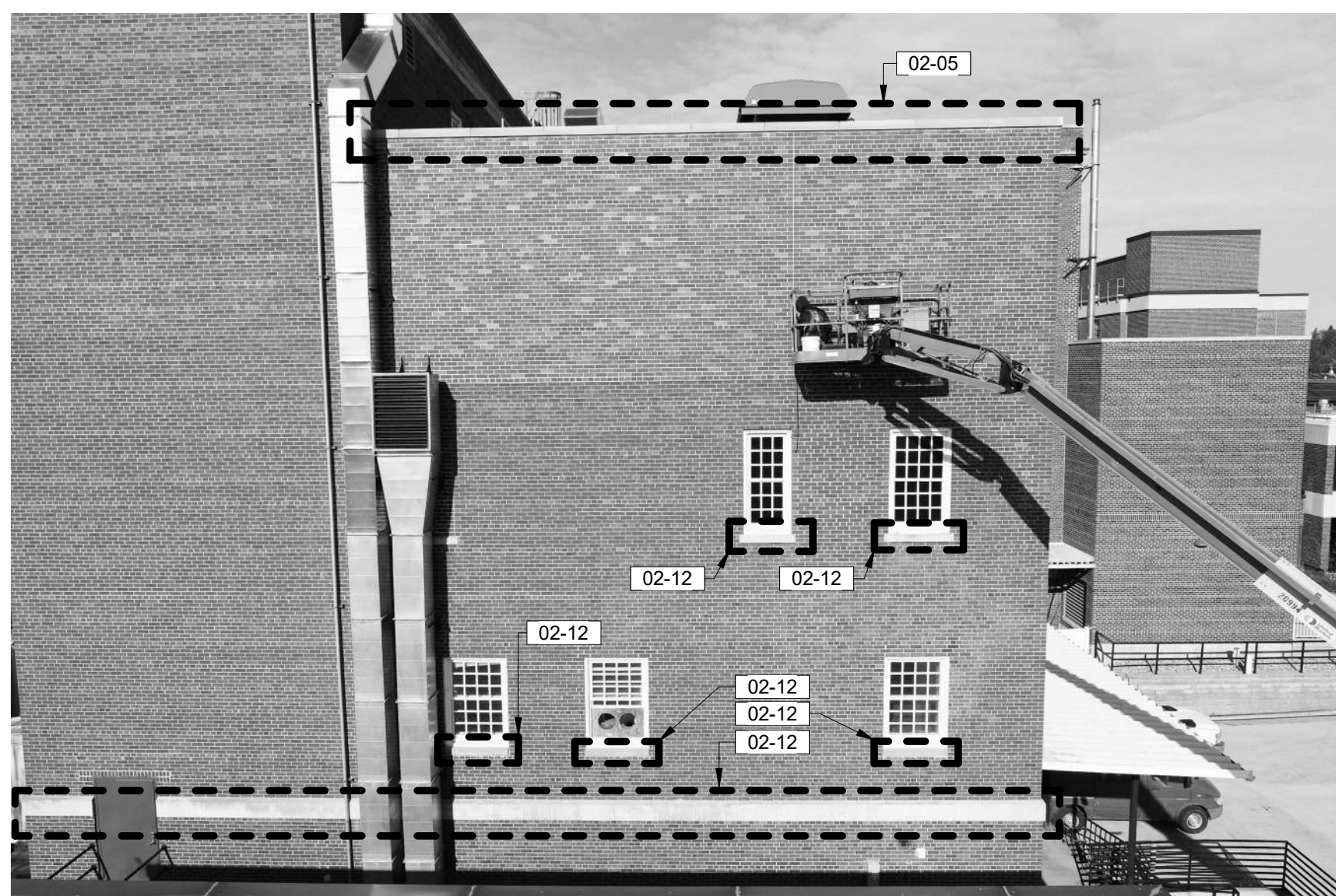


IMAGE 016 - GREEN



IMAGE 012 - GREEN



IMAGE 015 - GREEN

GENERAL NOTES:

1. SHEET SIZE FOR PROPER SCALE IS 30" X 42".
2. SEE SHEET G-001 FOR GENERAL NOTES.
3. DIMENSIONS ARE APPROXIMATIONS. IT IS THE
RESPONSIBILITY OF THE CONTRACTOR TO FIELD
VISIT THE PROJECT AND VERIFY EXISTING
CONDITIONS/DIMENSIONS AND PROPOSED
CONDITIONS. COORDINATE DEMOLITION BETWEEN
ALL TRADES. NOTIFY COR IMMEDIATELY OF ANY
CONFLICTS OR DISCREPANCIES.
4. DURING TUCKPOINTING AND SEALING AND
CLEANING PROTECT ANY LOUVERS, WINDOWS,
HOODS, ETC.

KEYNOTES:

- | | |
|-------|--|
| 02-04 | CUT 3/8" JOINT THE FULL DEPTH OF THE BRICK AND FILL WITH BACKER ROD AND SEALANT. SEE SPECIFICATION FOR COLOR. |
| 02-05 | REMOVE EXISTING MATERIAL FROM THE PRECAST JOINT. CLEAN PRECAST AND APPLY SEALER INSTANTLY TO PRECAST AND SEALANT. COLOR TO BE CUSTOM COLOR TO MATCH PRECAST. SEE DETAIL 3/A-000 |
| | INSTALL NEW BRICK TO MATCH EXISTING DAMAGED BRICK AND EXISTING BULK USING MORTAR TO MATCH EXISTING |
| 02-12 | CLEAN PRECAST/LIMESTONE AND APPLY SEALER. |
| 02-21 | REMOVE EXISTING MATERIAL FROM THE PRECAST JOINT. CLEAN PRECAST AND APPLY SEALER INSTANTLY TO PRECAST AND SEALANT. COLOR TO BE CUSTOM COLOR TO MATCH PRECAST. SEE DETAIL 7/A-000. |
| 04-02 | SEE DETAIL 2/A-000 AND 4/A-000 FOR MOVEMENT JOINT |

[illegible]