

11/9/2021 2:22:10 PM

one eighth inch = one foot
0 4 8 16

one quarter inch = one foot
0 2 4 8

three eighths inch = one foot
0 4 8 16

one half inch = one foot
0 2 4 8

three quarters inch = one foot
0 2 4 8

one foot one inch = one foot
0 2 4 8

one and one half inches = one foot
0 2 4 8

one three inches = one foot
0 2 4 8

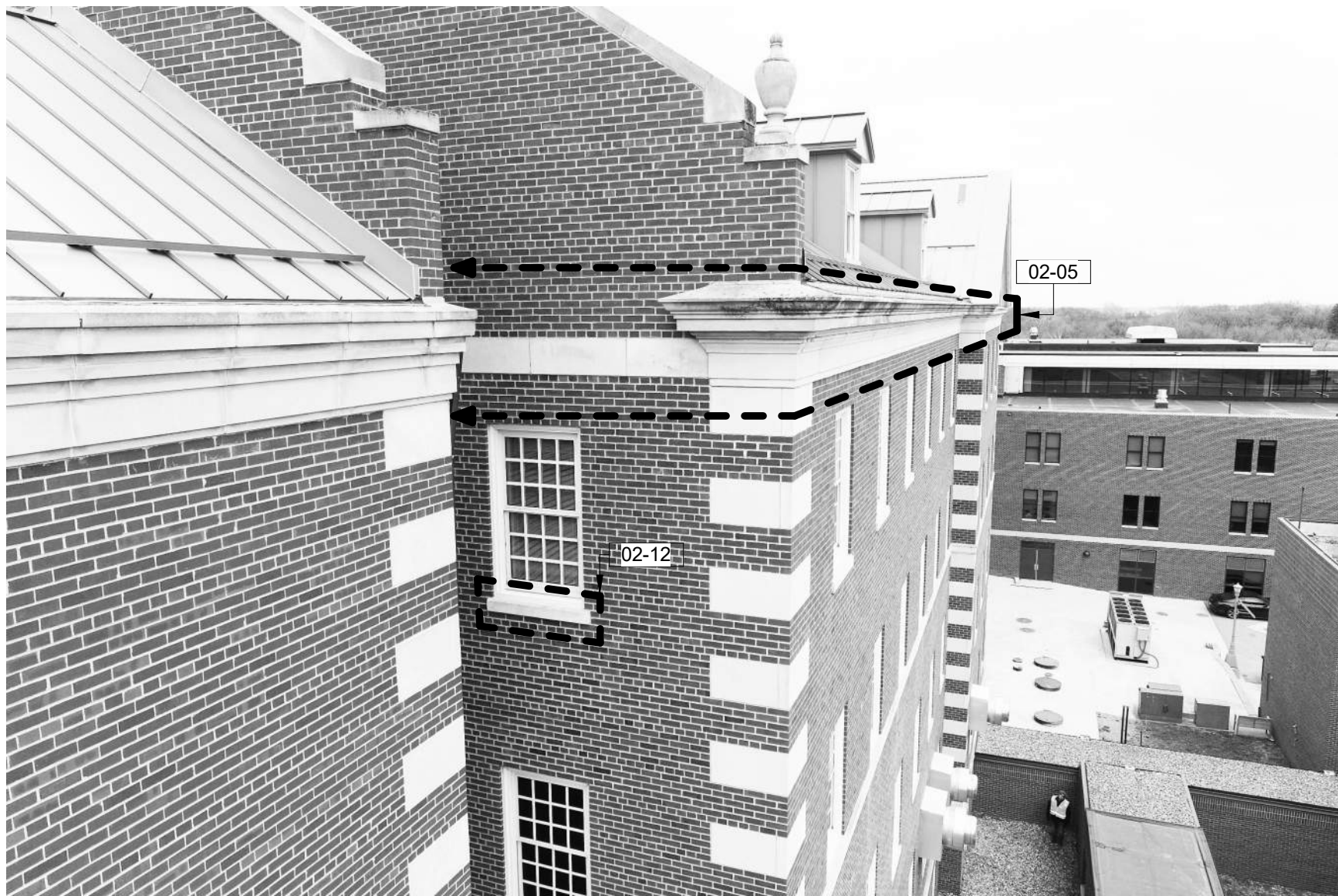


IMAGE 229 - YELLOW

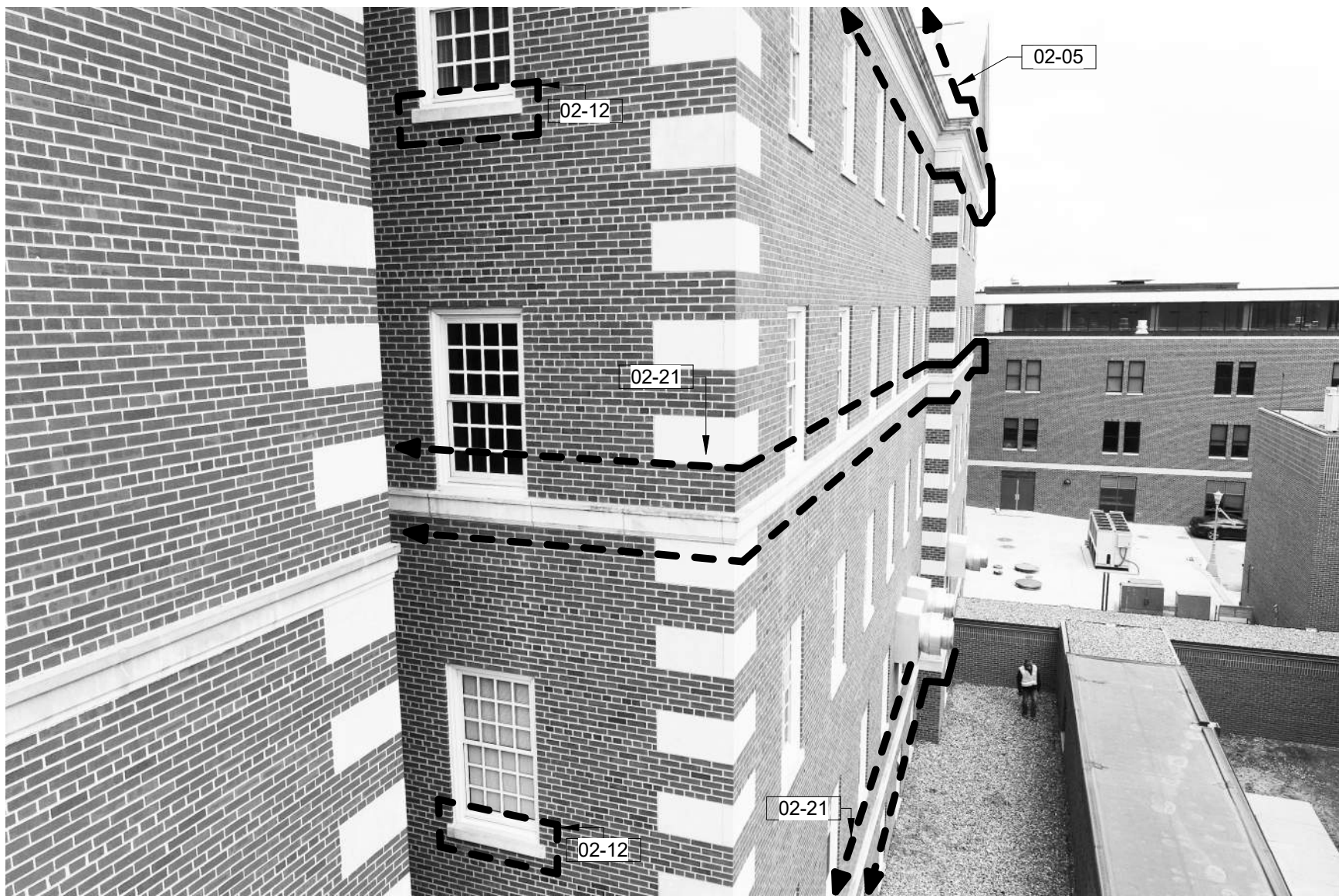


IMAGE 230 - YELLOW

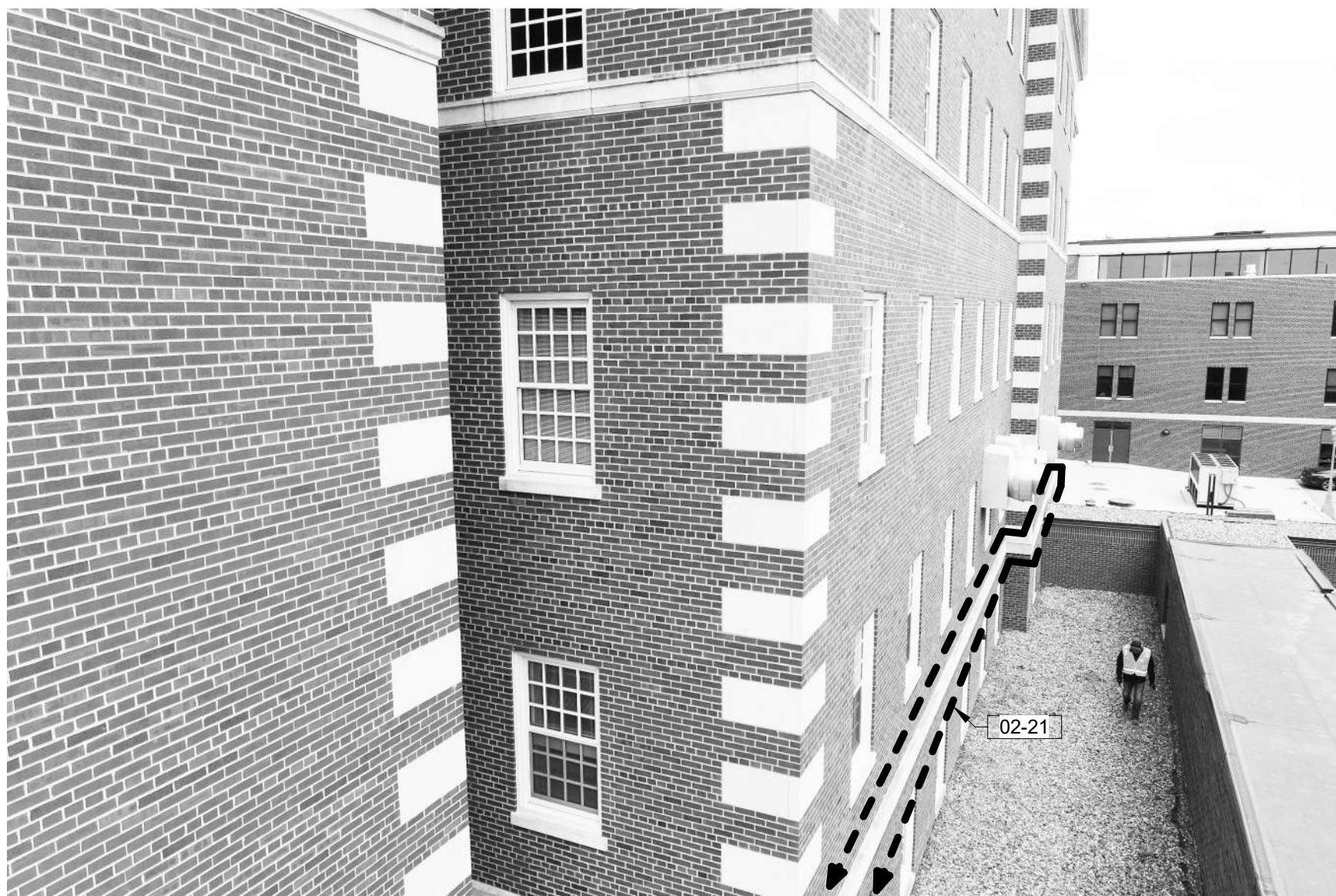


IMAGE 231 - YELLOW



IMAGE 232 - YELLOW



IMAGE 233 - YELLOW

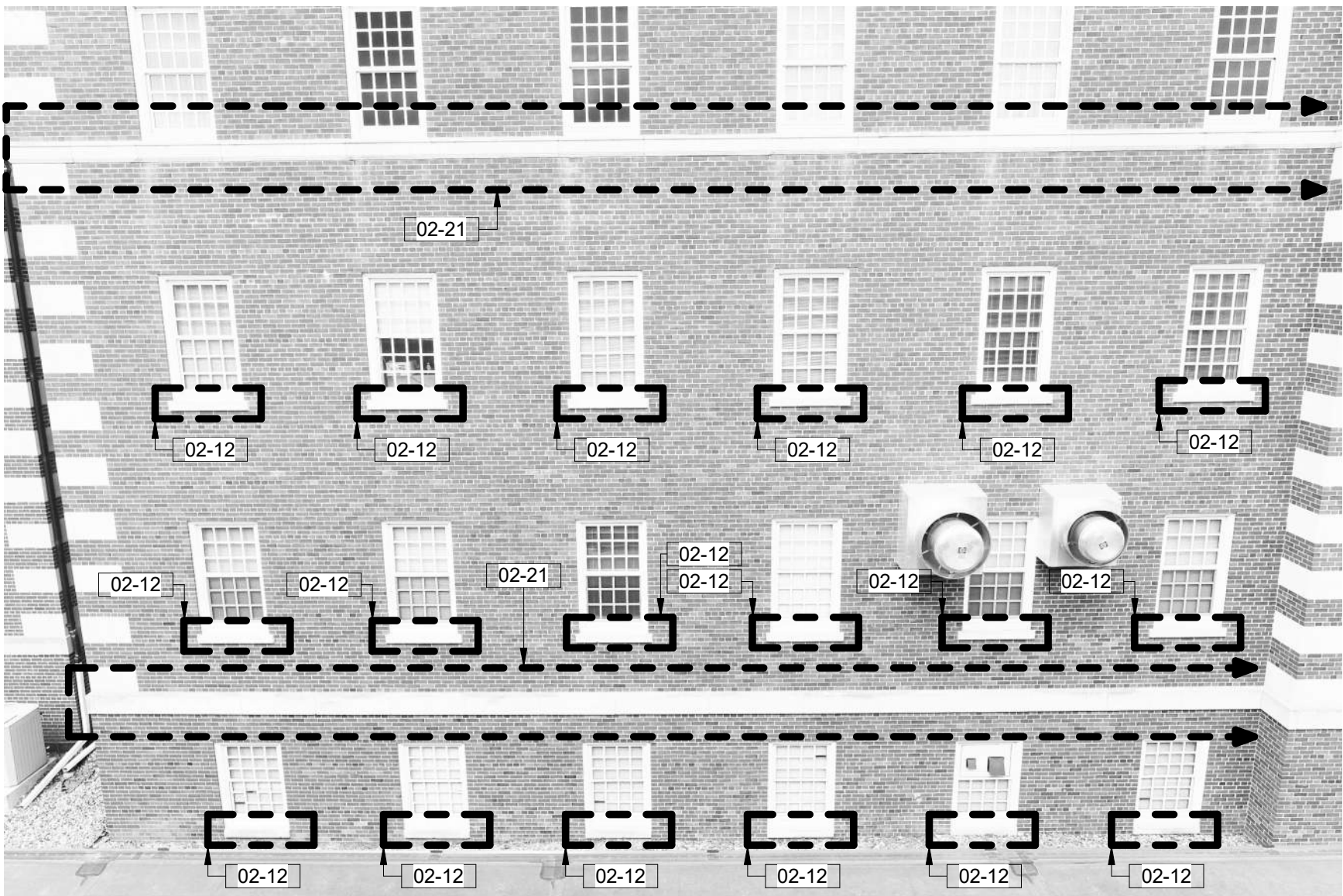


IMAGE 234 - YELLOW



IMAGE 235 - YELLOW

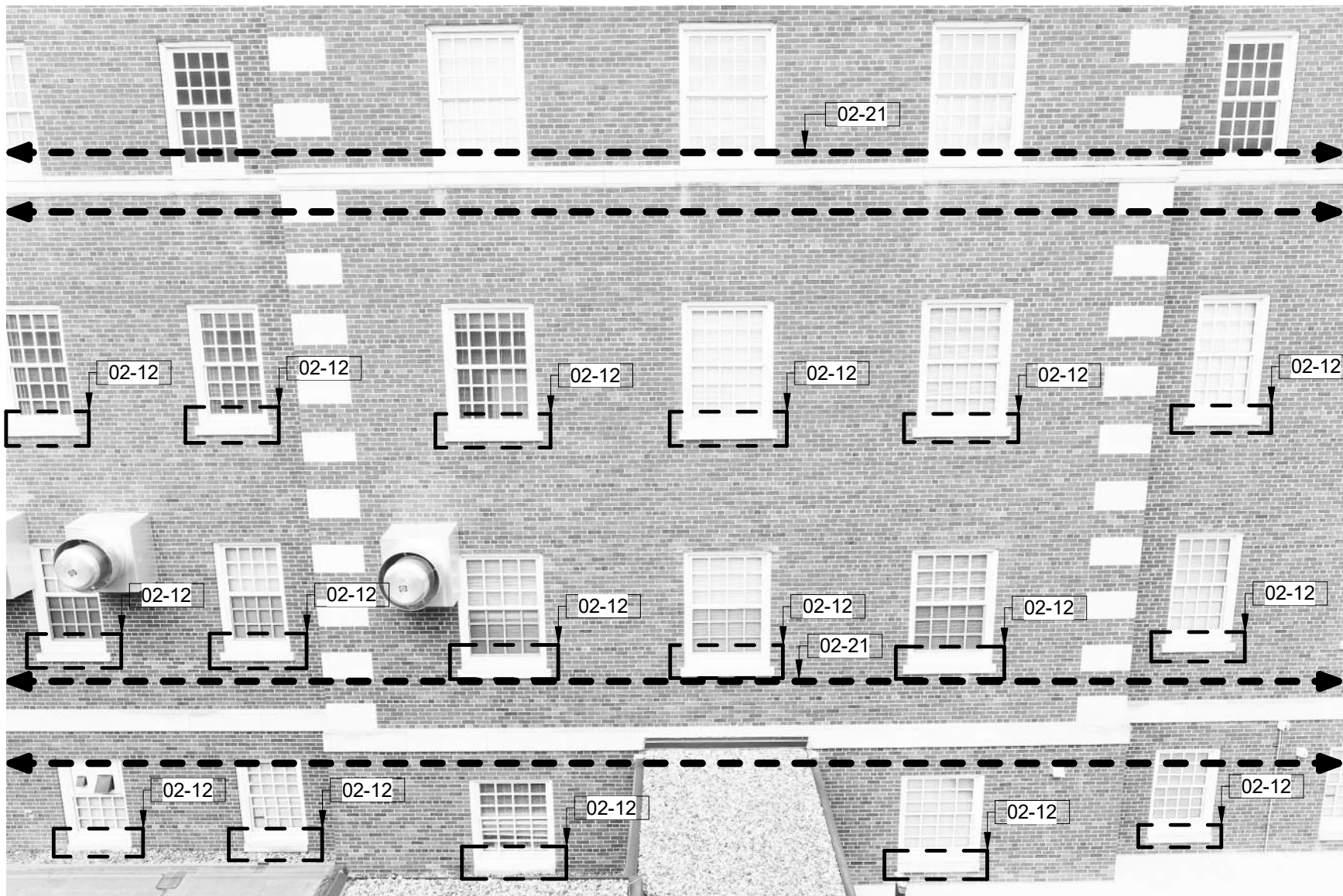


IMAGE 236 - YELLOW

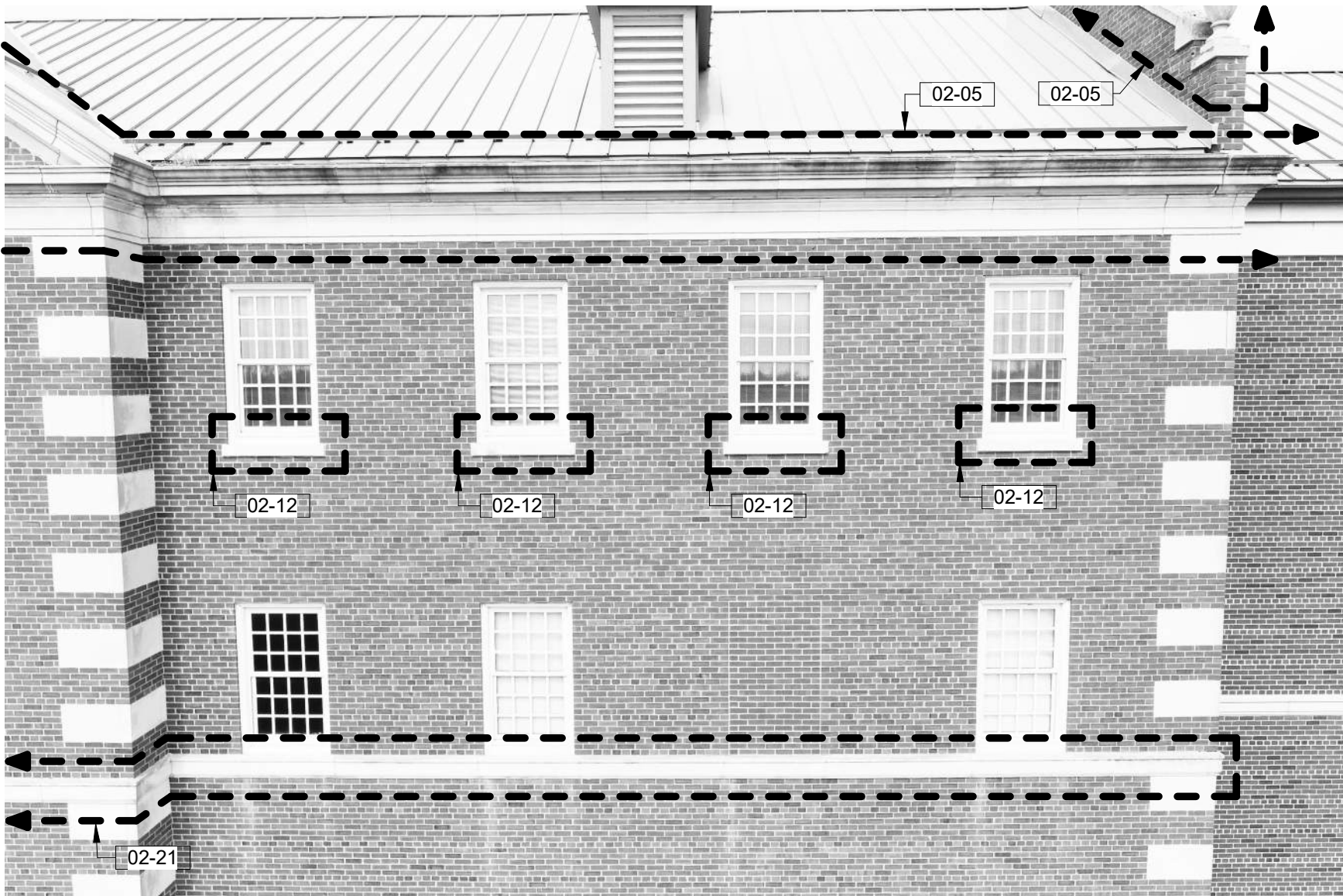


IMAGE 237 - YELLOW

GENERAL NOTES:

1. SHEET SIZE FOR PROPER SCALE IS 30" X 42".
2. SEE SHEET G-001 FOR GENERAL NOTES.
3. DIMENSIONS ARE APPROXIMATIONS. IT IS THE RESPONSIBILITY OF THE CONTRACTOR TO FIELD VISIT THE PROJECT AND VERIFY EXISTING CONDITIONS. COORDINATE DEMOLITION BETWEEN ALL TRADES. NOTIFY COR IMMEDIATELY OF ANY CONFLICTS OR DISCREPANCIES.
4. DURING TUCKPOINTING AND SEALING AND CLEANING PROTECT ANY LOUVERS, WINDOWS, HOODS, ETC.

KEYNOTES:

- 02-05 REMOVE EXISTING MATERIAL FROM THE PRECAST JOINT. CLEAN PRECAST AND APPLY SEALER. INSTALL BACKER ROD AND SEALANT. COLOR TO BE CUSTOM COLOR TO MATCH PRECAST. SEE DETAIL 3/A-000.
- 02-12 CLEAN PRECAST LIMESTONE AND APPLY SEALER.
- 02-21 REMOVE EXISTING MATERIAL FROM THE PRECAST JOINT. CLEAN PRECAST, AND APPLY SEALER. INSTALL BACKER ROD AND SEALANT. COLOR TO BE CUSTOM COLOR TO MATCH PRECAST. SEE DETAIL 7/A-000.

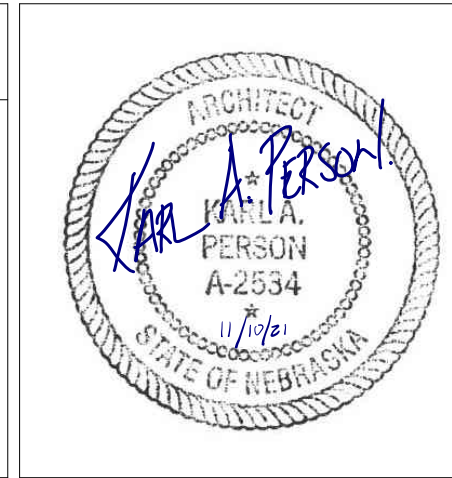
CONSTRUCTION DOCUMENTS

Revisions:	Date

CONSULTANTS:

MBN ENGINEERING

MBN ENGINEERING
503 7TH STREET NORTH, SUITE 200
FARGO, NORTH DAKOTA 58102
PH: (701) 478-6336
FAX: (701) 478-6340



ARCHITECT/ENGINEERS:

FOURFRONT DESIGN INC.

FOURFRONT DESIGN, INC.
517 7TH STREET
RAPID CITY, SOUTH DAKOTA 57701
PH: (605) 342-9470
FAX: (605) 342-2377
WWW.FOURFRONTDESIGN.COM

Drawing Title

DRONE IMAGES YELLOW

Approved: Project Director

CLIFFORD HALVORSON

437-21-101

Project Title

REPAIR EXTERIOR FINISHES

Location

VA HCS FARGO, ND

Date

11/10/2021

Checked

KP

Drawn

TLB

Project Number

437-21-111

Building Number

Drawing Number

A-473

Dwg. 31 of 39

Office of Construction and Facilities Management

Department of Veterans Affairs

11/9/2021 2:22:12 PM

0 1 2 3 4 5 6 7 8 9 10 11 12 13 14 15 16 17 18 19 20 21 22 23 24 25 26 27 28 29 30 31 32 33 34 35 36 37 38 39 40 41 42 43 44 45 46 47 48 49 50 51 52 53 54 55 56 57 58 59 60 61 62 63 64 65 66 67 68 69 70 71 72 73 74 75 76 77 78 79 80 81 82 83 84 85 86 87 88 89 90 91 92 93 94 95 96 97 98 99 100

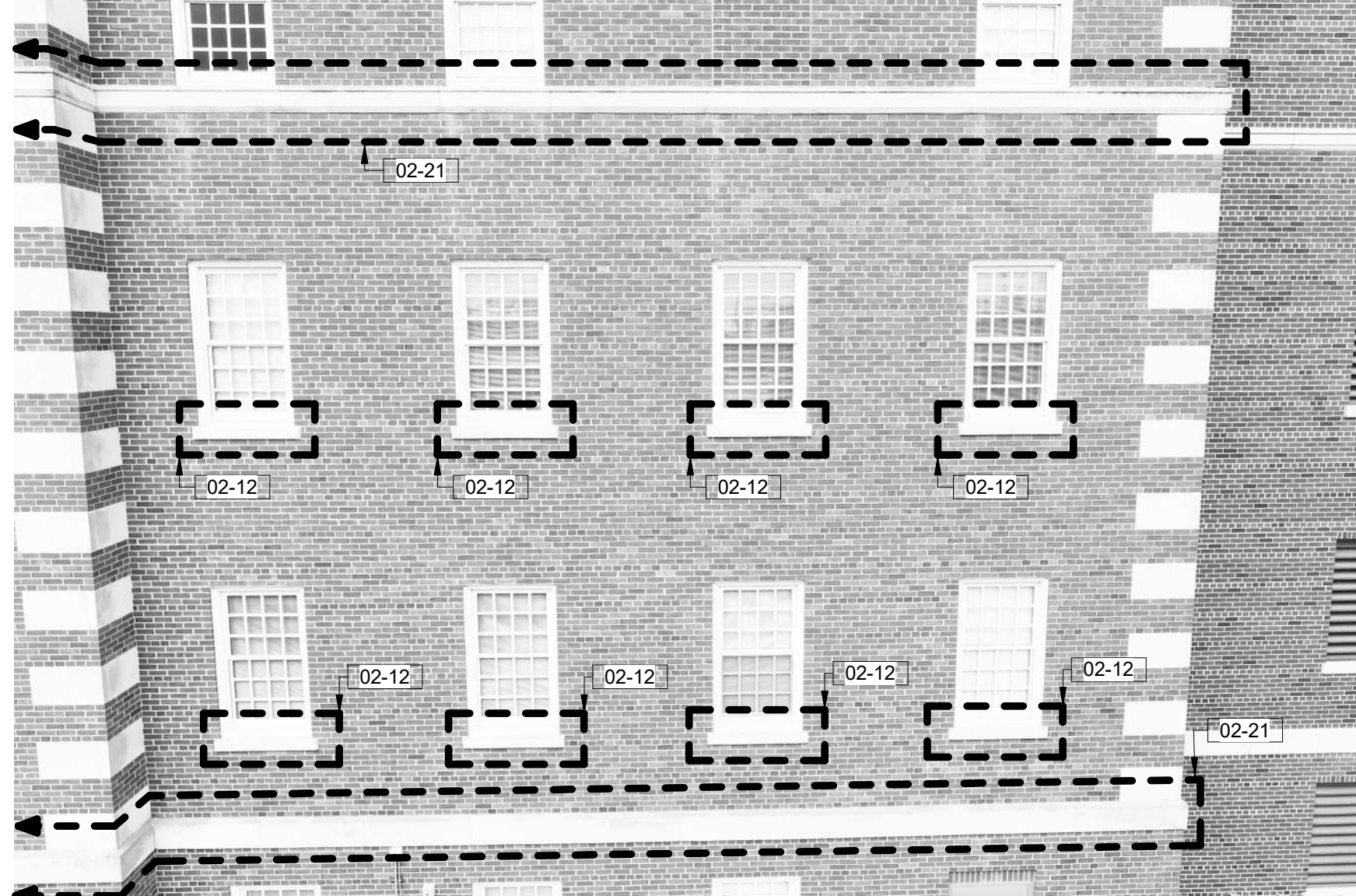


IMAGE 238 - YELLOW



IMAGE 239 - YELLOW

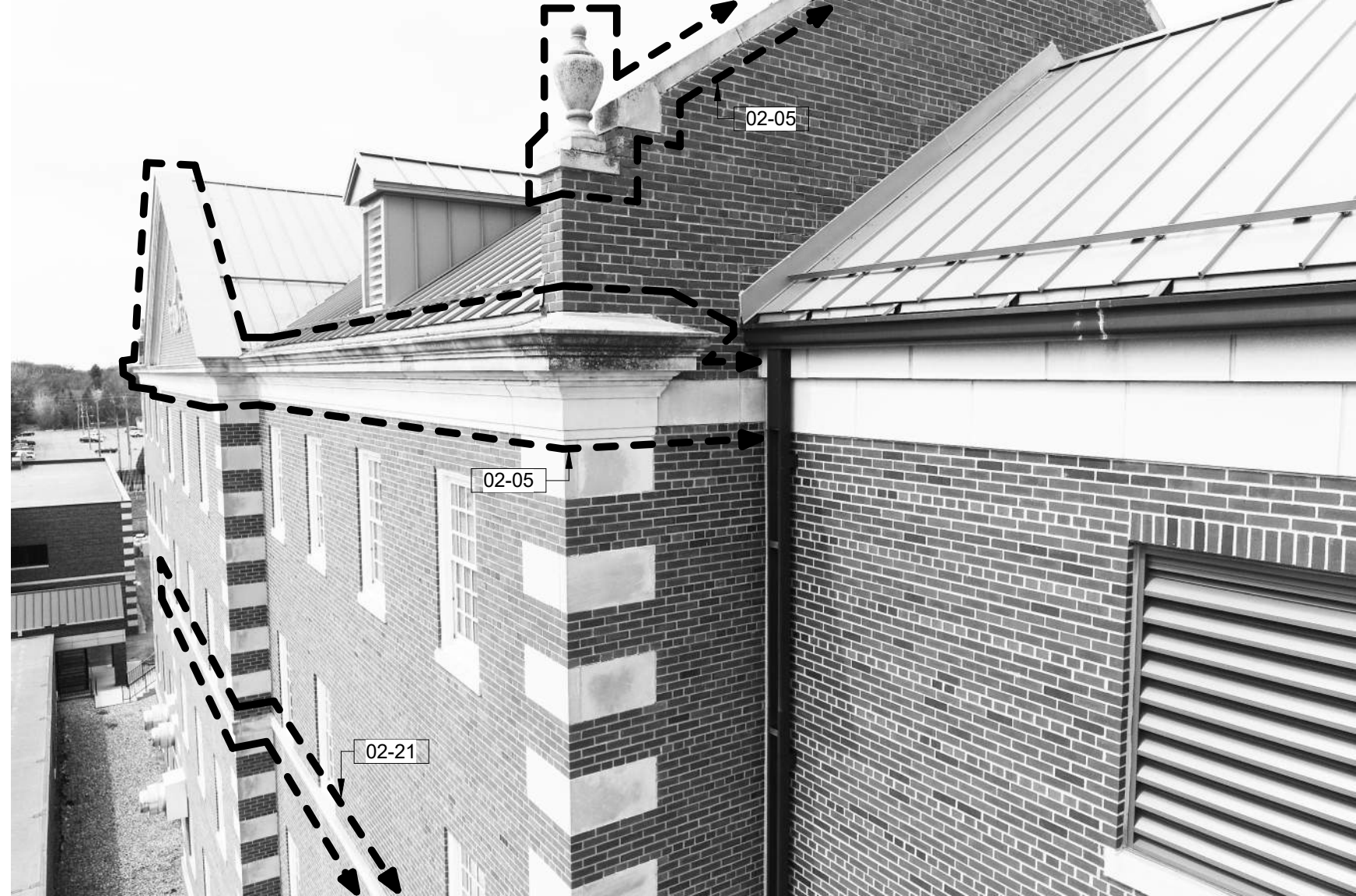


IMAGE 240 - YELLOW

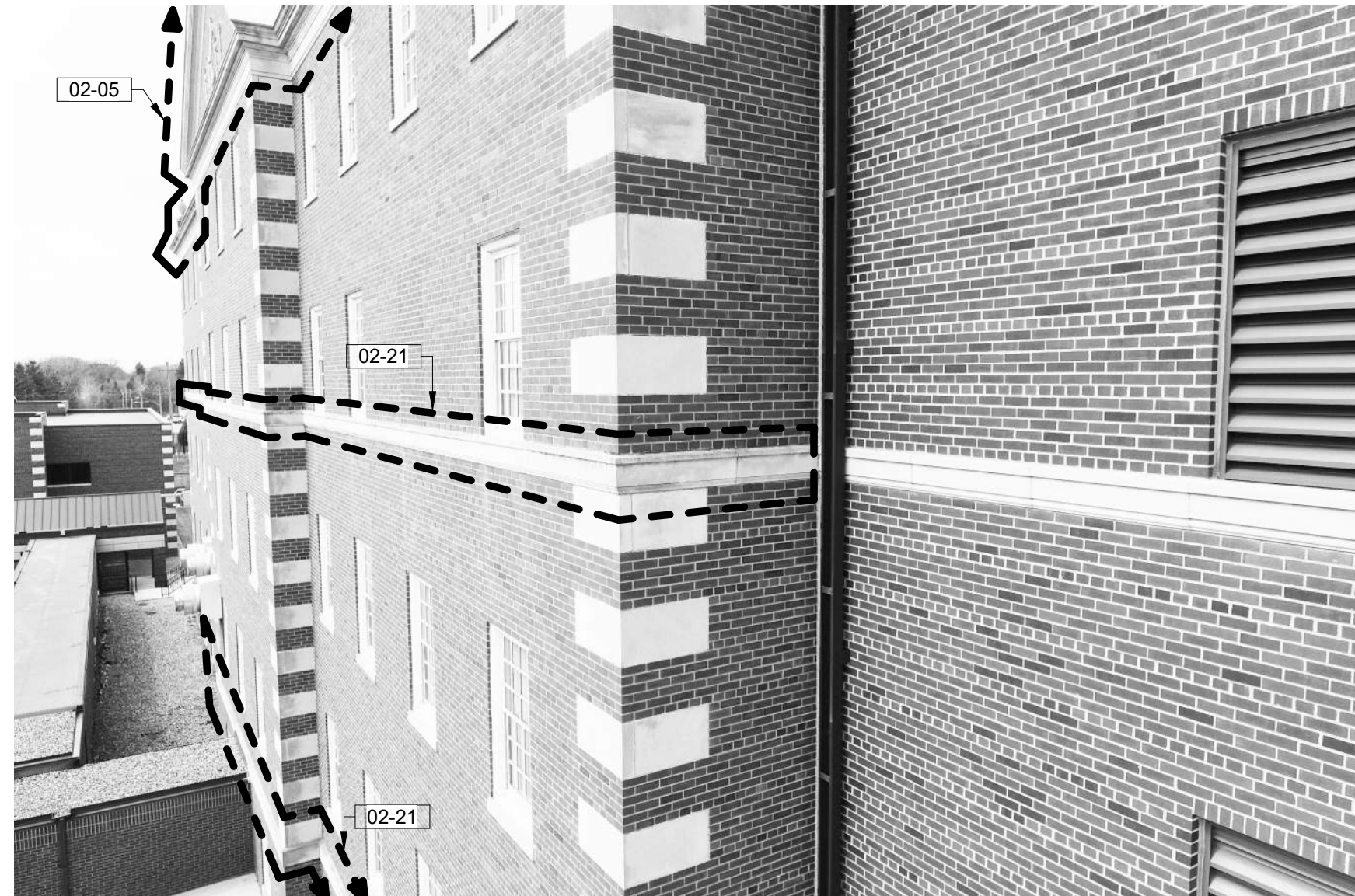


IMAGE 241 - YELLOW



IMAGE 242 - YELLOW

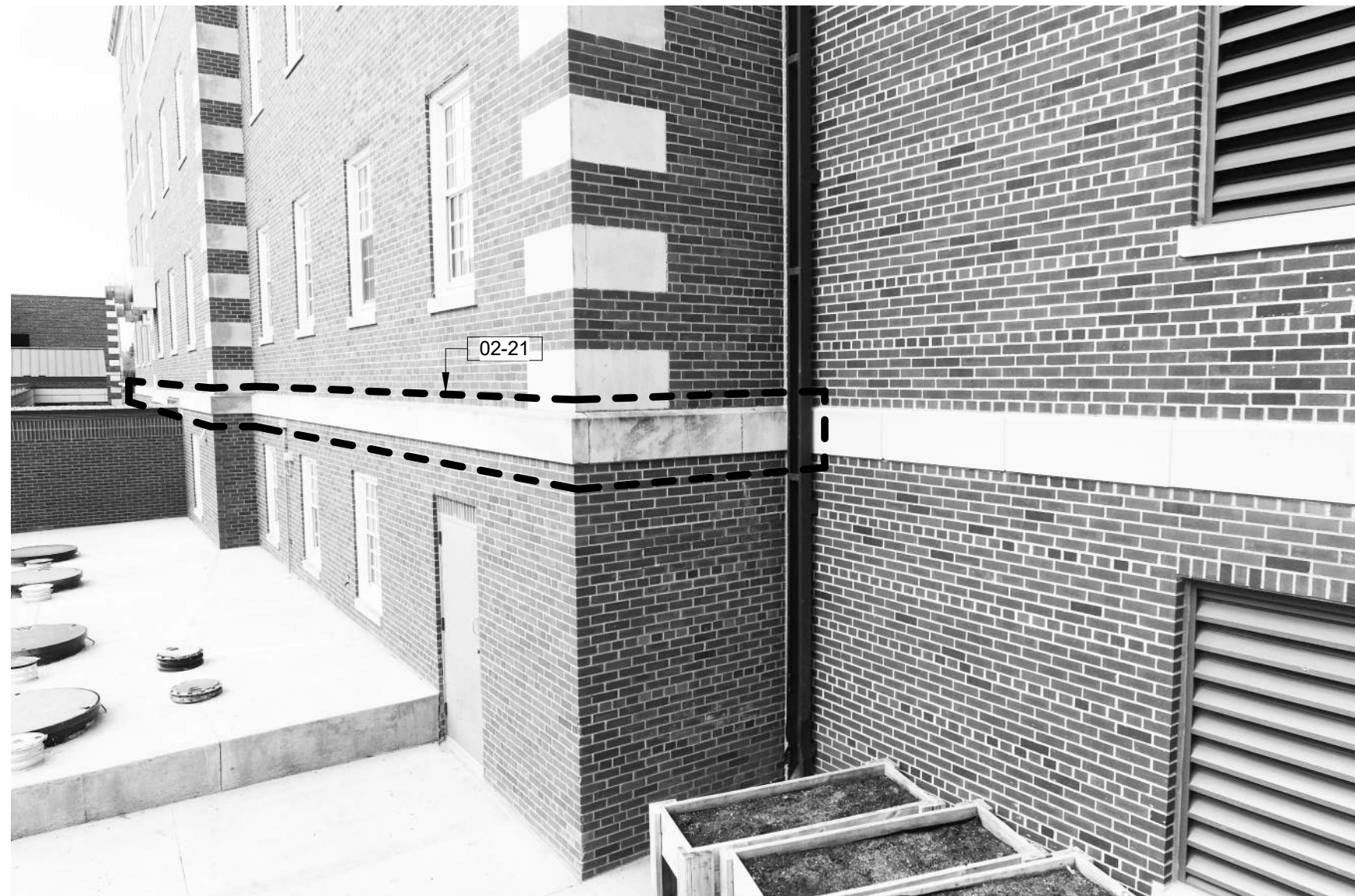


IMAGE 243 - YELLOW

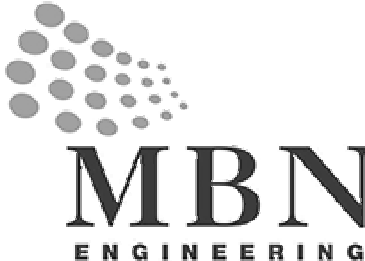
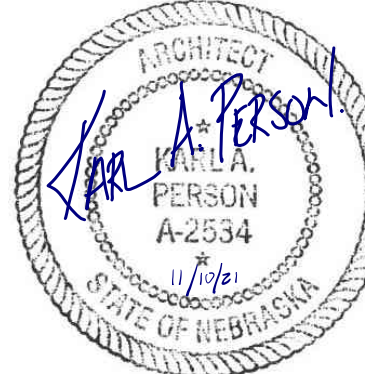

GENERAL NOTES:

1. SHEET SIZE FOR PROPER SCALE IS 30" X 42".
2. SEE SHEET G-001 FOR GENERAL NOTES.
3. DIMENSIONS ARE APPROXIMATIONS. IT IS THE RESPONSIBILITY OF THE CONTRACTOR TO FIELD VISIT THE PROJECT AND VERIFY EXISTING CONDITIONS. COORDINATE DEMOLITION BETWEEN ALL TRADES. NOTIFY COR IMMEDIATELY OF ANY CONFLICTS OR DISCREPANCIES.
4. DURING TUCKPOINTING AND SEALING AND CLEANING PROTECT ANY LOUVERS, WINDOWS, HOODS, ETC.

KEYNOTES:

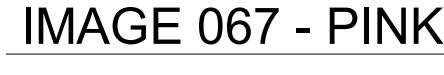
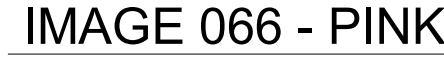
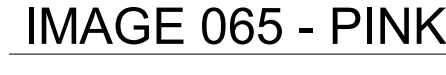
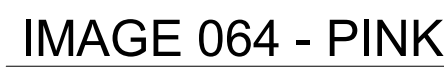
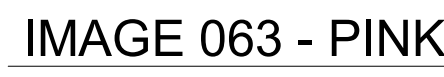
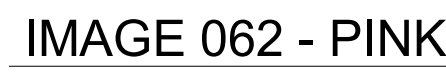
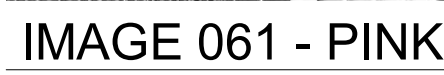
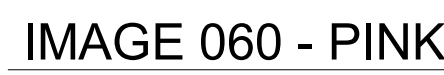
- 02-05 REMOVE EXISTING MATERIAL FROM THE PRECAST JOINT. CLEAN PRECAST AND APPLY SEALER. INSTALL BACKER ROD AND SEALANT. COLOR TO BE CUSTOM COLOR TO MATCH PRECAST. SEE DETAIL 7/A-000.
- 02-12 CLEAN PRECAST LIMESTONE AND APPLY SEALER.
- 02-21 REMOVE EXISTING MATERIAL FROM THE PRECAST JOINT. CLEAN PRECAST, AND APPLY SEALER. INSTALL BACKER ROD AND SEALANT. COLOR TO BE CUSTOM COLOR TO MATCH PRECAST. SEE DETAIL 7/A-000.

CONSTRUCTION DOCUMENTS

<div>Revisions:</div> <div>Date</div>		<div>CONSULTANTS:</div> <div><div>MBN ENGINEERING 503 7TH STREET NORTH, SUITE 200 FARGO, NORTH DAKOTA 58102 PH: (701) 478-6336 FAX: (701) 478-6340</div></div>		<div></div>		<div>ARCHITECT/ENGINEERS:</div> <div><div>FOURFRONT DESIGN, INC. 517 7TH STREET RAPID CITY, SOUTH DAKOTA 57701 PH: (605) 342-9470 FAX: (605) 342-2377 WWW.FOURFRONTDESIGN.COM</div></div>		<div>Drawing Title</div> <div>DRONE IMAGES YELLOW</div>		<div>Project Title</div> <div>REPAIR EXTERIOR FINISHES</div>		<div>Project Number</div> <div>437-21-111</div>		<div>Office of Construction and Facilities Management</div>	
								<div>Location</div> <div>VA HCS FARGO, ND</div>		<div>Drawing Number</div> <div>A-474</div>		<div>Department of Veterans Affairs</div>			
						<div>Approved: Project Director</div> <div>CLIFFORD HALVORSON</div>		<div>Date</div> <div>11/10/2021</div>		<div>Checked</div> <div>KP</div>		<div>Drawn</div> <div>TLB</div>		<div>Dwg. 32 of 39</div>	
						<div>437-21-101</div>									

SHEET SIZE FOR PROPER SCALE IS 30" X 42".
SEE SHEET G-001 FOR GENERAL NOTES.
DIMENSIONS ARE APPROXIMATIONS. IT IS THE
RESPONSIBILITY OF THE CONTRACTOR TO FIELD
VISIT THE PROJECT AND VERIFY EXISTING
CONDITIONS/DIMENSIONS AND PROPOSED
CONDITIONS. COORDINATE DEMOLITION BETWEEN
ALL TRADES. NOTIFY CR IMMEDIATELY OF ANY
CONFLICTS OR DISCREPANCIES.
DURING TUCKPOINTING AND SEALING AND
CLEANING PROTECT ANY LOUVERS, WINDOWS,
HOODS, ETC.

02-04	CUT 3/8" JOINT THE FULL DEPTH OF THE BRICK AND FILL WITH BACKER ROD AND SEALANT. SEE SPECIFICATION FOR COLOR.
02-05	REMOVE EXISTING MATERIAL FROM THE PRECAST JOINT. CLEAN PRECAST, AND APPLY SEALER. INSTALL BACKER ROD AND SEALANT. COLOR TO BE CUSTOM COLOR TO MATCH PRECAST. SEE DETAIL 3/A-000
02-12	CLEAN PRECAST/LIMESTONE AND APPLY SEALER
02-21	REMOVE EXISTING MATERIAL FROM THE PRECAST JOINT. CLEAN PRECAST, AND APPLY SEALER. INSTALL BACKER ROD AND SEALANT. COLOR TO BE CUSTOM COLOR TO MATCH PRECAST. SEE DETAIL 7/A-000.
04-02	SEE DETAIL 2/A-000 AND 4/A-000 FOR MOVEMENT JOINT



CONSULTANTS:



MBN ENGINEERING
 503 7TH STREET NORTH, SUITE 200
 FARGO, NORTH DAKOTA 58102
 PH: (701) 478-6336
 FAX: (701) 478-6340




Drawing Title DRONE IMAGES PINK		Project Title REPAIR EXTERIOR FINISHES		Project Number 437-21-111		<div>Office of Construction and Facilities Management</div>
				Building Number		
Approved: Project Director CLIFFORD HALVORSON		Location VA HCS FARGO, ND		Drawing Number A-480		
		Date 11/10/2021	Checked KP	Drawn TLB	Dwg. 33 of 39	
<div>  Department of Veterans Affairs </div>						



IMAGE 068 - PINK

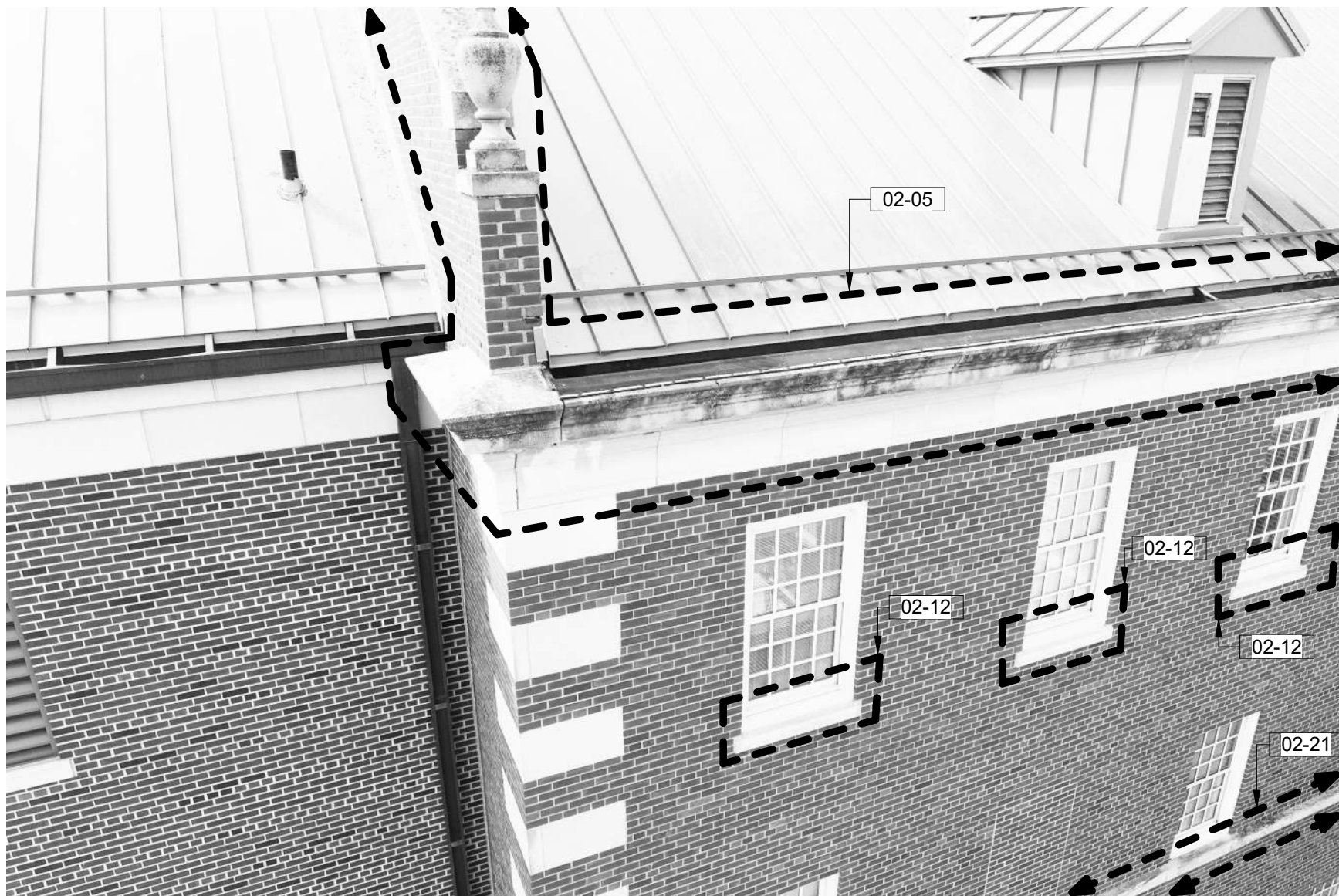


IMAGE 161 - PINK



IMAGE 162 - PINK



IMAGE 163 - PINK



IMAGE 164 - PINK



IMAGE 165 - PINK



IMAGE 166 - PINK



IMAGE 167 - PINK

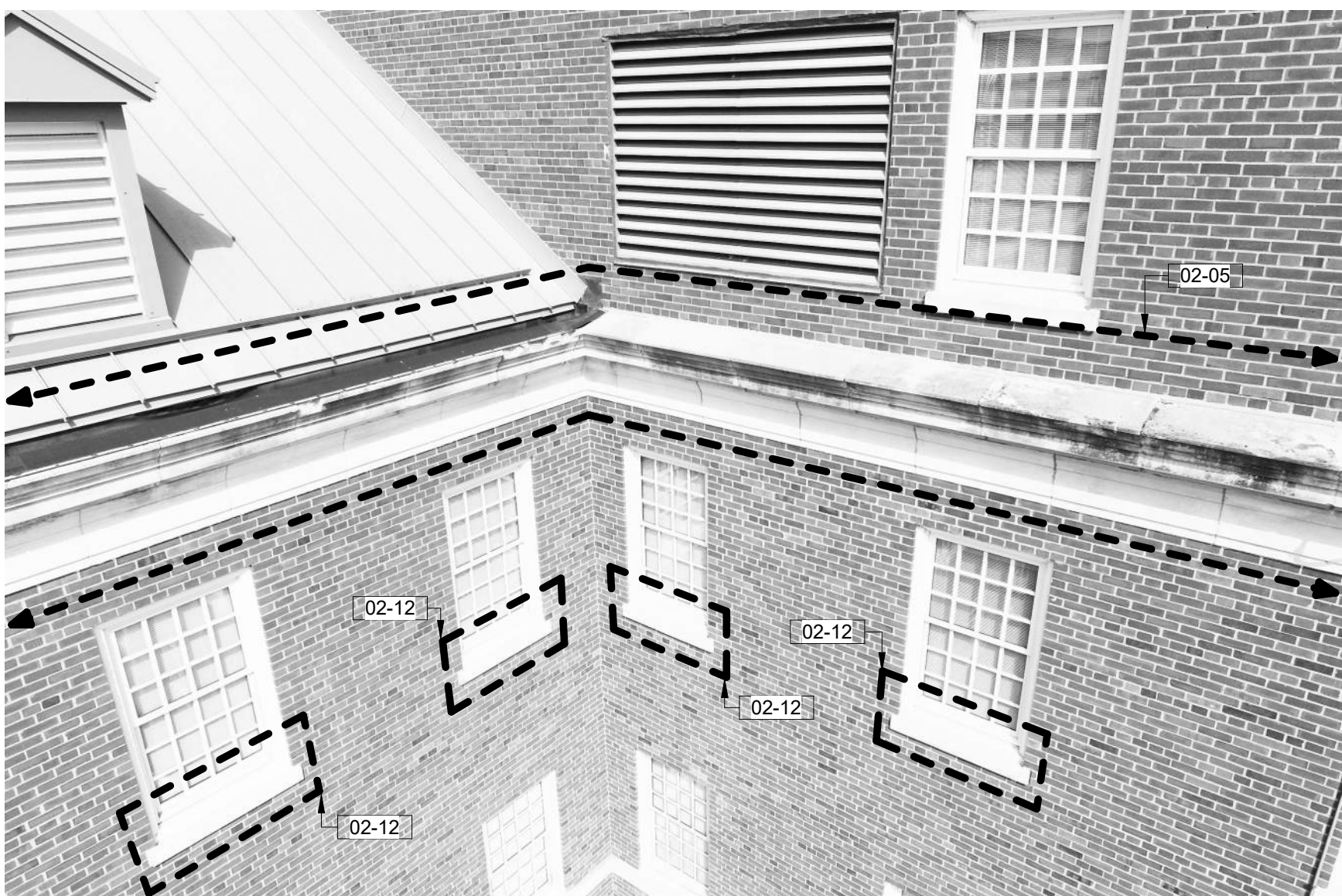


IMAGE 168 - PINK

GENERAL NOTES:

1. SHEET SIZE FOR PROPER SCALE IS 30" X 42".
2. SEE SHEET G-001 FOR GENERAL NOTES.
3. DIMENSIONS ARE APPROXIMATIONS. IT IS THE RESPONSIBILITY OF THE CONTRACTOR TO FIELD VISIT THE PROJECT AND VERIFY EXISTING CONDITIONS, DIMENSIONS AND PROPOSED CONDITIONS. COORDINATE DEMOLITION BETWEEN ALL TRADES. NOTIFY COR IMMEDIATELY OF ANY CONFLICTS OR DISCREPANCIES.
4. DURING TUCKPOINTING AND SEALING AND CLEANING, PROTECT ANY LOUVERS, WINDOWS, HOODS, ETC.

KEYNOTES:

- 02-05 REMOVE EXISTING MATERIAL FROM THE PRECAST JOINT. CLEAN PRECAST, AND APPLY SEALER. INSTALL BACKER ROD AND SEALANT. COLOR TO BE CUSTOM COLOR TO MATCH PRECAST. SEE DETAIL 3/A-000.
- 02-12 CLEAN PRECAST LIMESTONE AND APPLY SEALER.
- 02-21 REMOVE EXISTING MATERIAL FROM THE PRECAST JOINT. CLEAN PRECAST, AND APPLY SEALER. INSTALL BACKER ROD AND SEALANT. COLOR TO BE CUSTOM COLOR TO MATCH PRECAST. SEE DETAIL 7/A-000.

CONSTRUCTION DOCUMENTS

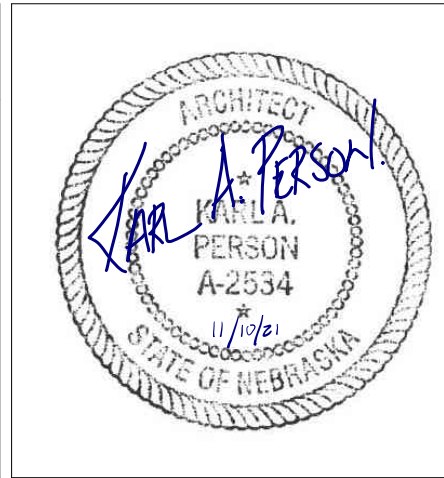
Revisions:	Date:

CONSULTANTS:



MBN
ENGINEERING

MBN ENGINEERING
503 7TH STREET NORTH, SUITE 200
FARGO, NORTH DAKOTA 58102
PH: (701) 478-6336
FAX: (701) 478-6340



ARCHITECT/ENGINEERS:



FOURFRONT
DESIGN INC.

FOURFRONT DESIGN, INC.
517 7TH STREET
RAPID CITY, SOUTH DAKOTA 57701
PH: (605) 342-9470
FAX: (605) 342-2377
WWW.FOURFRONTDESIGN.COM

Drawing Title

DRONE IMAGES PINK

Approved: Project Director

CLIFFORD HALVORSON

437-21-101

Project Title

REPAIR EXTERIOR FINISHES

Location

VA HCS FARGO, ND

Date

11/10/2021

Checked

KP

Drawn

TLB

Project Number

437-21-111

Building Number

Drawing Number

A-481

Dwg. 34 of 39

Office of
Construction
and Facilities
Management

 Department of
Veterans Affairs

11/9/2021 2:22:19 PM

one eighth inch = one foot
one quarter inch = one foot
three eighths inch = one foot
one half inch = one foot
three quarters inch = one foot
one inch = one foot
one and one half inches = one foot
two inches = one foot
three inches = one foot
four inches = one foot
five inches = one foot
six inches = one foot
seven inches = one foot
eight inches = one foot
nine inches = one foot
ten inches = one foot
eleven inches = one foot
twelve inches = one foot
thirteen inches = one foot
fourteen inches = one foot
fifteen inches = one foot
sixteen inches = one foot
seventeen inches = one foot
eighteen inches = one foot
nineteen inches = one foot
twenty inches = one foot
twenty one inches = one foot
twenty two inches = one foot
twenty three inches = one foot
twenty four inches = one foot
twenty five inches = one foot
twenty six inches = one foot
twenty seven inches = one foot
twenty eight inches = one foot
twenty nine inches = one foot
thirty inches = one foot
thirty one inches = one foot
thirty two inches = one foot
thirty three inches = one foot
thirty four inches = one foot
thirty five inches = one foot
thirty six inches = one foot
thirty seven inches = one foot
thirty eight inches = one foot
thirty nine inches = one foot
forty inches = one foot
forty one inches = one foot
forty two inches = one foot
forty three inches = one foot
forty four inches = one foot
forty five inches = one foot
forty six inches = one foot
forty seven inches = one foot
forty eight inches = one foot
forty nine inches = one foot
fifty inches = one foot
fifty one inches = one foot
fifty two inches = one foot
fifty three inches = one foot
fifty four inches = one foot
fifty five inches = one foot
fifty six inches = one foot
fifty seven inches = one foot
fifty eight inches = one foot
fifty nine inches = one foot
sixty inches = one foot
sixty one inches = one foot
sixty two inches = one foot
sixty three inches = one foot
sixty four inches = one foot
sixty five inches = one foot
sixty six inches = one foot
sixty seven inches = one foot
sixty eight inches = one foot
sixty nine inches = one foot
seventy inches = one foot
seventy one inches = one foot
seventy two inches = one foot
seventy three inches = one foot
seventy four inches = one foot
seventy five inches = one foot
seventy six inches = one foot
seventy seven inches = one foot
seventy eight inches = one foot
seventy nine inches = one foot
eighty inches = one foot
eighty one inches = one foot
eighty two inches = one foot
eighty three inches = one foot
eighty four inches = one foot
eighty five inches = one foot
eighty six inches = one foot
eighty seven inches = one foot
eighty eight inches = one foot
eighty nine inches = one foot
ninety inches = one foot
ninety one inches = one foot
ninety two inches = one foot
ninety three inches = one foot
ninety four inches = one foot
ninety five inches = one foot
ninety six inches = one foot
ninety seven inches = one foot
ninety eight inches = one foot
ninety nine inches = one foot
one hundred inches = one foot



IMAGE 169 - PINK



IMAGE 246 - PINK



IMAGE 249 - PINK



IMAGE 244 - PINK



IMAGE 247 - PINK



IMAGE 250 - PINK

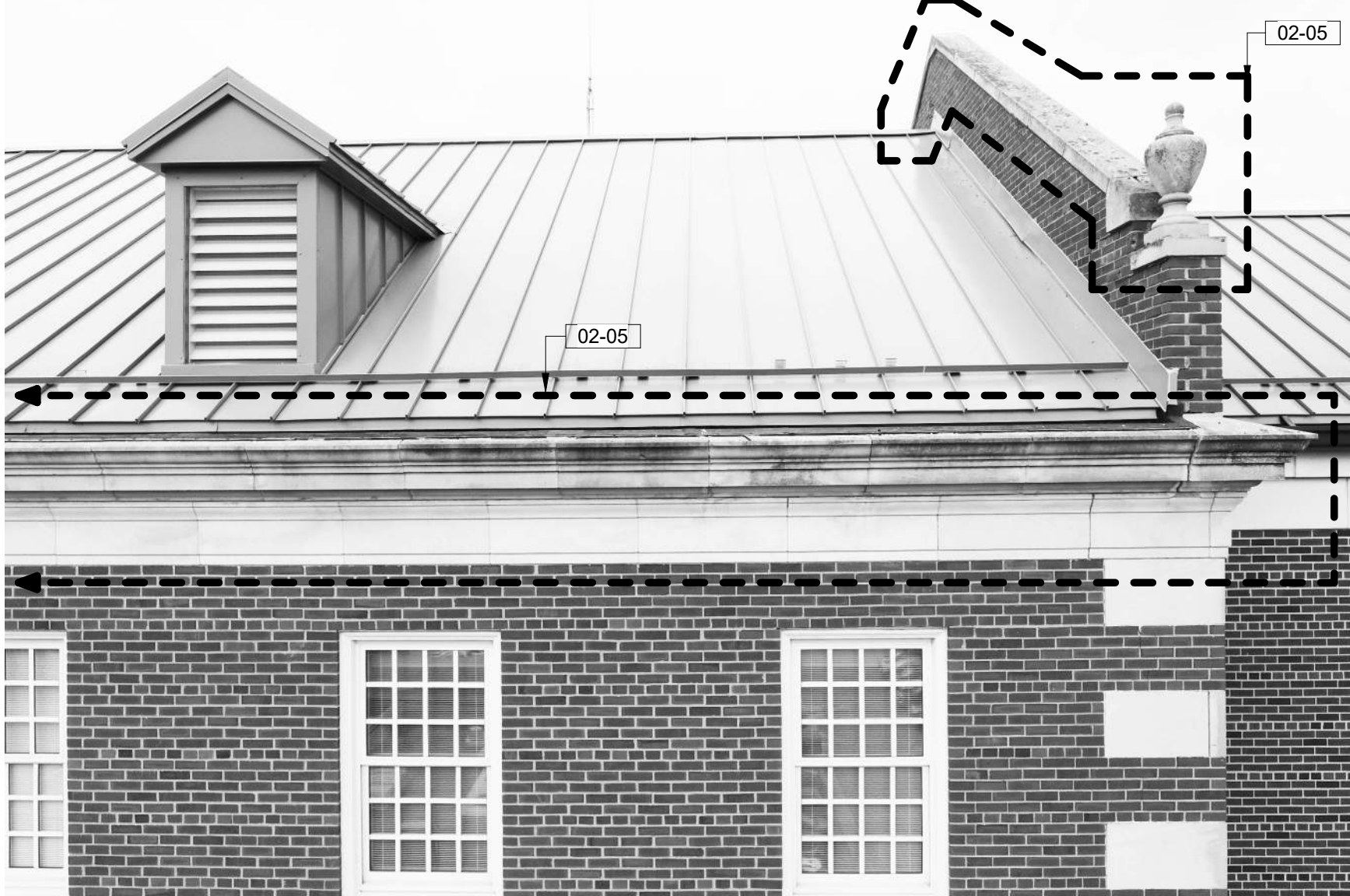


IMAGE 245 - PINK



IMAGE 248 - PINK



IMAGE 251 - PINK

GENERAL NOTES:

1. SHEET SIZE FOR PROPER SCALE IS 30" X 42".
2. SEE SHEET G-001 FOR GENERAL NOTES.
3. DIMENSIONS ARE APPROXIMATIONS. IT IS THE RESPONSIBILITY OF THE CONTRACTOR TO FIELD VISIT THE PROJECT AND VERIFY EXISTING CONDITIONS. COORDINATE DEMOLITION BETWEEN ALL TRADES. NOTIFY COR IMMEDIATELY OF ANY CONFLICTS OR DISCREPANCIES.
4. DURING TUCKPOINTING AND SEALING AND CLEANING, PROTECT ANY LOUVERS, WINDOWS, HOODS, ETC.

KEYNOTES:

- 02-05 REMOVE EXISTING MATERIAL FROM THE PRECAST JOINT. CLEAN PRECAST AND APPLY SEALER. INSTALL BACKER ROD AND SEALANT. COLOR TO BE CUSTOM COLOR TO MATCH PRECAST. SEE DETAIL 3/A-000.
- 02-12 CLEAN PRECAST LIMESTONE AND APPLY SEALER.
- 02-21 REMOVE EXISTING MATERIAL FROM THE PRECAST JOINT. CLEAN PRECAST, AND APPLY SEALER. INSTALL BACKER ROD AND SEALANT. COLOR TO BE CUSTOM COLOR TO MATCH PRECAST. SEE DETAIL 7/A-000.

CONSTRUCTION DOCUMENTS

<div>Revisions:</div> <div>Date</div>		<div>CONSULTANTS:</div> <div><div><div>MBN ENGINEERING</div><div>503 7TH STREET NORTH, SUITE 200 FARGO, NORTH DAKOTA 58102 PH: (701) 478-6336 FAX: (701) 478-6340</div></div><div><div>ARCHITECT/ENGINEERS:</div><div><div>FOURFRONT DESIGN, INC.</div><div>517 7TH STREET RAPID CITY, SOUTH DAKOTA 57701 PH: (605) 342-9470 FAX: (605) 342-2377 WWW.FOURFRONTDESIGN.COM</div></div></div></div>		<div>Drawing Title</div> <div>DRONE IMAGES PINK</div> <div>Approved: Project Director</div> <div>CLIFFORD HALVORSON</div> <div>437-21-101</div>		<div>Project Title</div> <div>REPAIR EXTERIOR FINISHES</div> <div>Location</div> <div>VA HCS FARGO, ND</div> <div>Date</div> <div>11/10/2021</div> <div>Checked</div> <div>KP</div> <div>Drawn</div> <div>TLB</div>		<div>Project Number</div> <div>437-21-111</div> <div>Building Number</div> <div></div> <div>Drawing Number</div> <div>A-482</div> <div>Dwg. 35 of 39</div>		<div>Office of Construction and Facilities Management</div> <div>Department of Veterans Affairs</div>	
---------------------------------------	--	--	--	---	--	---	--	--	--	---	--

11/9/2021 2:22:20 PM

one eighth inch = one foot

one quarter inch = one foot

one half inch = one foot

three eighths inch = one foot

three quarters inch = one foot

one foot one inch = one foot

one and one half inches = one foot

one and three quarters inches = one foot



IMAGE 252 - PINK

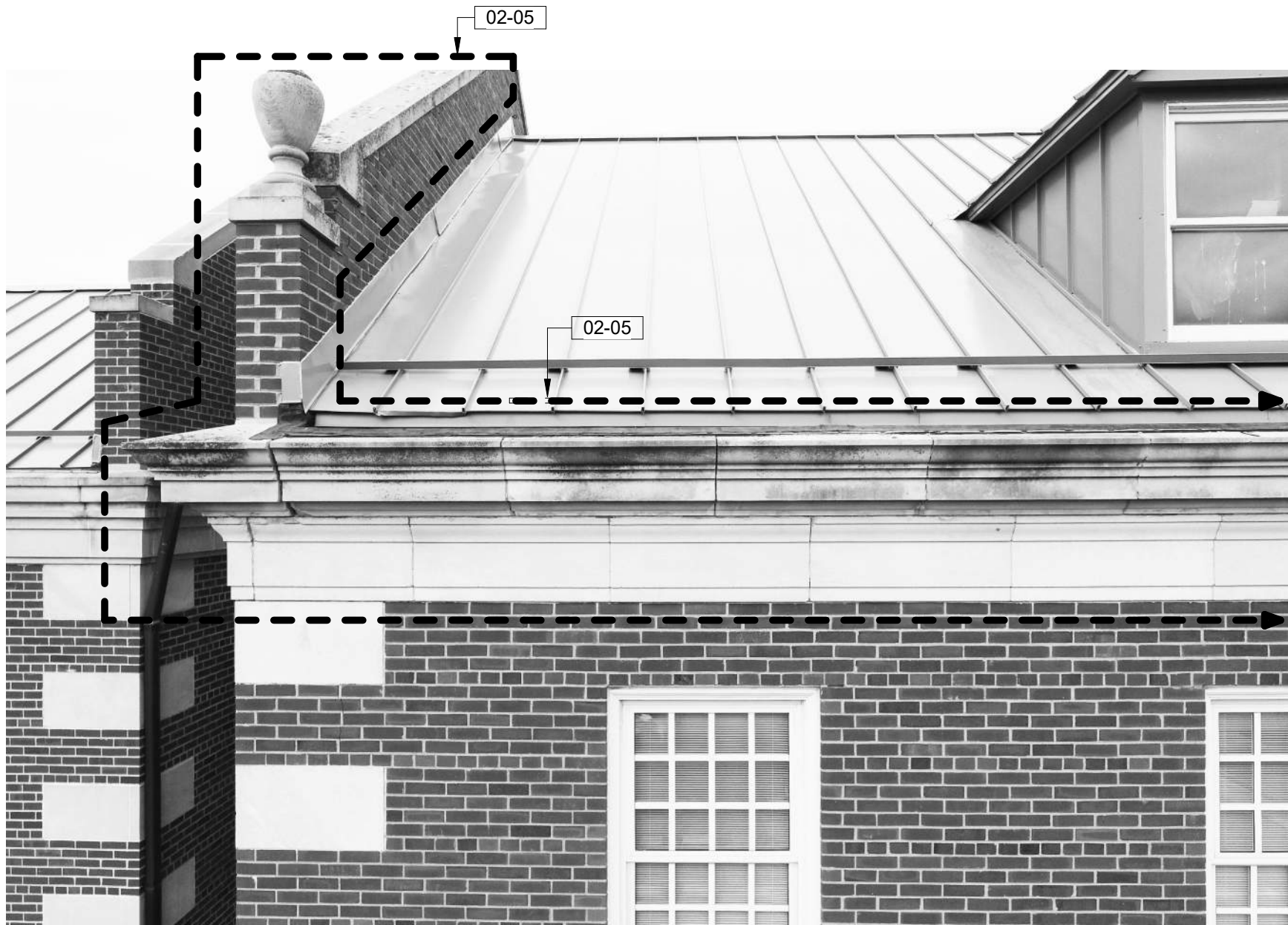


IMAGE 253 - PINK

GENERAL NOTES:

1. SHEET SIZE FOR PROPER SCALE IS 30" X 42".
2. SEE SHEET G-001 FOR GENERAL NOTES.
3. DIMENSIONS ARE APPROXIMATIONS. IT IS THE RESPONSIBILITY OF THE CONTRACTOR TO FIELD VISIT THE PROJECT AND VERIFY EXISTING CONDITIONS. COORDINATE DEMOLITION BETWEEN ALL TRADES. NOTIFY COR IMMEDIATELY OF ANY CONFLICTS OR DISCREPANCIES.
4. DURING TUCKPOINTING AND SEALING AND CLEANING PROTECT ANY LOUVERS, WINDOWS, HOODS, ETC.

KEYNOTES:

- 02-05 REMOVE EXISTING MATERIAL FROM THE PRECAST JOINT. CLEAN PRECAST AND APPLY SEALER. INSTALL BACKER ROD AND SEALANT. COLOR TO BE CUSTOM COLOR TO MATCH PRECAST. SEE DETAIL 3A-000

CONSTRUCTION DOCUMENTS

<div>Revisions:</div> <div>Date</div>	<div>CONSULTANTS:</div> <div><div><div>MBN ENGINEERING</div><div>503 7TH STREET NORTH, SUITE 200 FARGO, NORTH DAKOTA 58102 PH: (701) 478-6336 FAX: (701) 478-6340</div></div><div><div>Professional Engineer A-2534 U of ND STATE OF NORTH DAKOTA</div></div></div>	<div>ARCHITECT/ENGINEERS:</div> <div><div><div>FOURFRONT DESIGN INC.</div><div>517 7TH STREET RAPID CITY, SOUTH DAKOTA 57701 PH: (605) 342-9470 FAX: (605) 342-2377 WWW.FOURFRONTDESIGN.COM</div></div><div><div>Professional Engineer A-2534 U of ND STATE OF NORTH DAKOTA</div></div></div>	<div>Drawing Title</div> <div>DRONE IMAGES PINK</div>	<div>Project Title</div> <div>REPAIR EXTERIOR FINISHES</div>	<div>Project Number</div> <div>437-21-111</div>	<div>Office of Construction and Facilities Management</div> <div>Department of Veterans Affairs</div>
			<div>Approved: Project Director</div> <div>CLIFFORD HALVORSON</div>	<div>Location</div> <div>VA HCS FARGO, ND</div>	<div>Drawing Number</div> <div>A-483</div>	
			<div>Date</div> <div>11/10/2021</div>	<div>Checked</div> <div>KP</div>	<div>Drawn</div> <div>TLB</div>	
			<div>Dwg. 36 of 39</div>			

1. SHEET SIZE FOR PROPER SCALE IS 30" X 42".
2. SEE SHEET G-001 FOR GENERAL NOTES.
3. DIMENSIONS ARE APPROXIMATIONS. IT IS THE RESPONSIBILITY OF THE CONTRACTOR TO FIELD VISIT THE PROJECT AND VERIFY EXISTING CONDITIONS/DIMENSIONS AND PROPOSED CONDITIONS. COORDINATE DEMOLITION BETWEEN ALL TRADES. NOTIFY COR IMMEDIATELY OF ANY CONFLICTS OR DISCREPANCIES.
4. DURING TUCKPOINTING AND SEALING AND CLEANING PROTECT ANY LOUVERS, WINDOWS, HOODS, ETC.

02-03	REMOVE EXISTING MORTAR TO A DEPTH OF 1" REFILL TO MATCH EXISTING MORTAR AND TOOL WORK
02-12	CLEAN PRECAST/LIMESTONE AND APPLY SEALER.



CONSTRUCTION DOCUMENTS