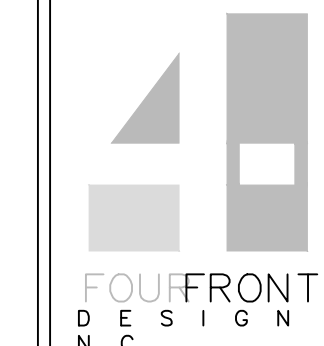

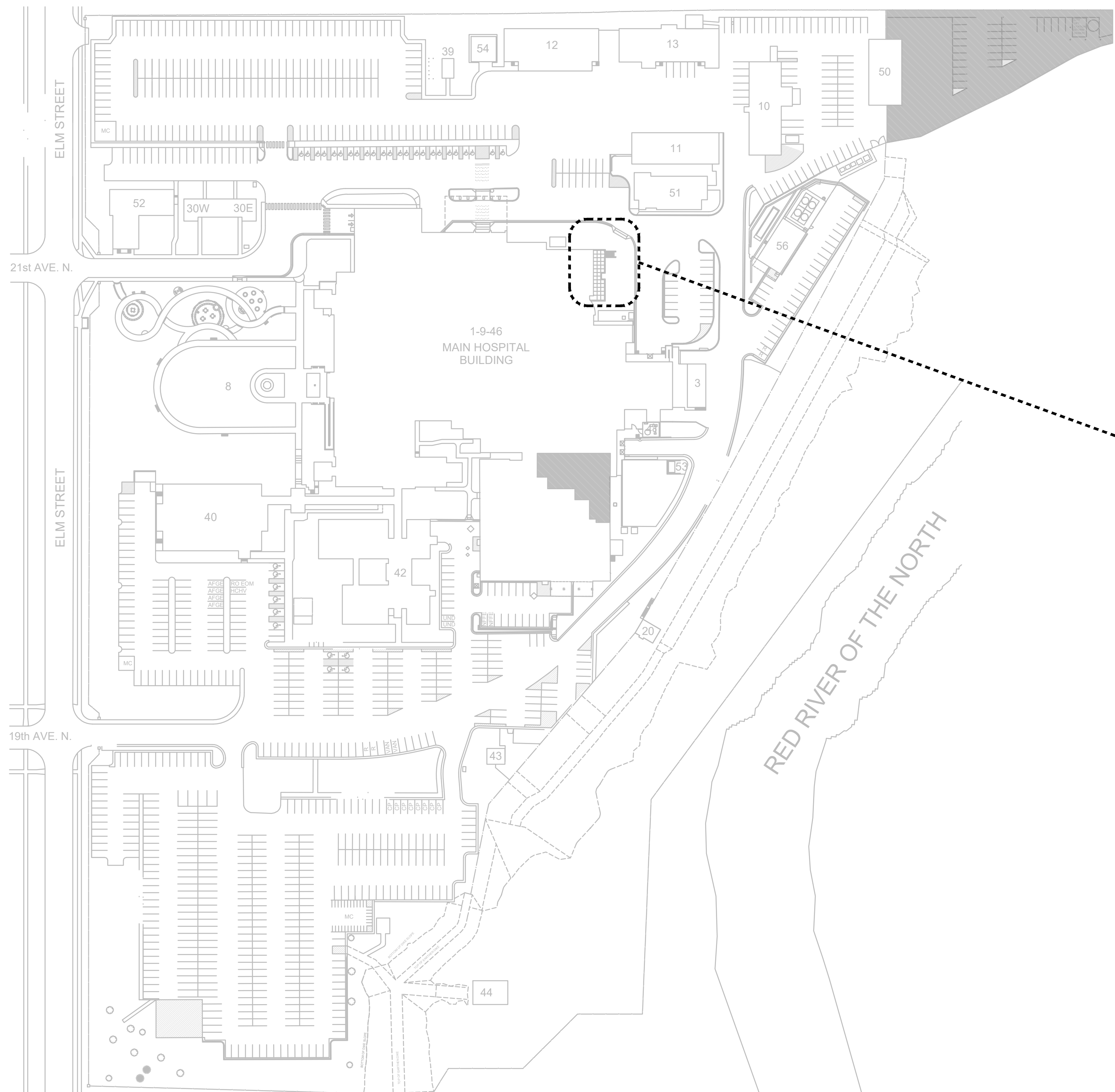


one and one half inches = one foot
 one quarter inch = one foot
 three eighths inch = one foot
 one eighth inch = one foot
 one half inch = one foot

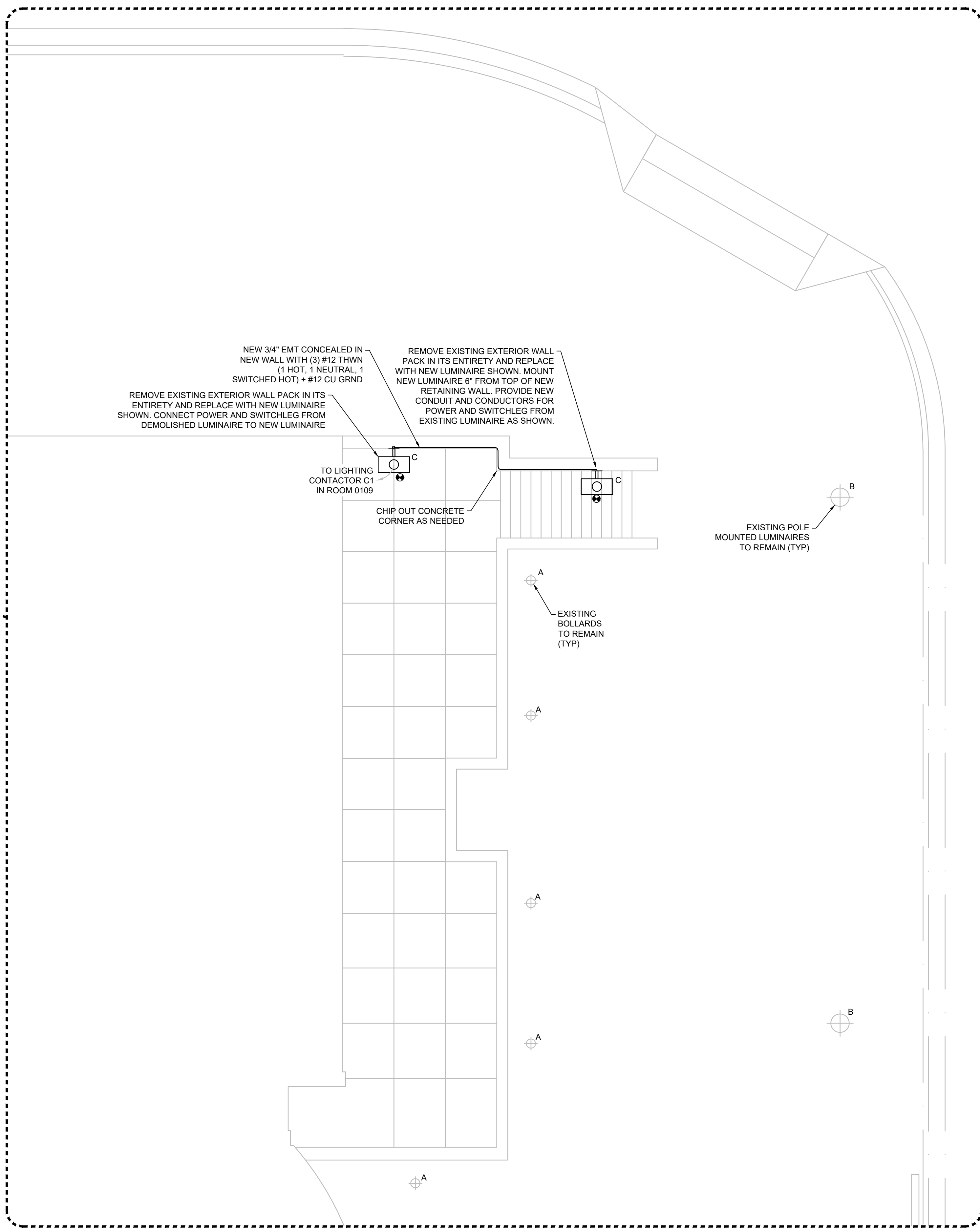
ELECTRICAL LEGEND (FLOORPLAN)			ELECTRICAL LEGEND (DETAILS)			ELECTRICAL ABBREVIATIONS			
SYMBOL	DESCRIPTION	SYMBOL	DESCRIPTION	SYMBOL	DESCRIPTION	SYMBOL	DESCRIPTION	SYMBOL	DESCRIPTION
[M]	MOTOR, SINGLE-PHASE	[R]	INSTANTANEOUS OVERCURRENT RELAY	[D]	NURSE CALL STATION	[Δ]	DELTA CONNECTION	[1PH]	SINGLE-PHASE
[3M]	MOTOR, THREE-PHASE	[R]	AC-TIME OVERCURRENT RELAY	[D+]	D = CORRIDOR DOME LIGHT MTD 6" ABOVE DOOR	[C]	MOTOR, SINGLE-PHASE	[2C]	TWO-CONDUCTOR
[T]	TRANSFORMER	[R]	AC-DIRECTIONAL OVERCURRENT RELAY	[I]	I = AUXILIARY INTERSECTIONAL DOME LIGHT	[C]	MOTOR, THREE-PHASE	[3C]	THREE-CONDUCTOR
[WYE]	WYE CONNECTION	[R]	LOCKING OUT RELAY	[TEC]	TELECOMMUNICATIONS TERMINAL CABINET	[4C]	FOUR-CONDUCTOR	[4W]	FOUR-WIRE
[DCT]	DUCT, CELL FLOOR HEADER	[DIS]	DISCONNECT SWITCH, FUSED	[EHP]	ELECTRIC POWER HINGE	[WYW]	WYE CONNECTION	[AAP]	ALARM ANNUNCIATOR PANEL
[DCT]	DUCT, TROLLEY	[DIS]	DISCONNECT SWITCH, UNFUSED	[DC]	DOOR CONTACT	[EG]	EARTH GROUND	[AC]	ACCESSIBLE
[DCT]	DUCT, UNDERFLOOR JUNCTION BOX	[DIS]	STARTER, COMBINATION WITH DISCONNECT SWITCH	[MD]	MOTION INTRUSION DETECTOR	[JB]	JUNCTION BOX	[ACC]	ACCESSIBLE
[EARTH]	EARTH GROUND	[DIS]	STARTER OR MOTOR CONTROLLER	[SSTV]	SECURITY SURVEILLANCE TELEVISION	[PB]	PULL BOX	[ADD]	AUTOMATIC DOOR OPENER
[JBOX]	JUNCTION BOX	[DRIVE]	VARIABLE FREQUENCY DRIVE	[C]	CAMERA	[AF]	ABOVE FINISHED FLOOR	[AFC]	AUTOMATIC FREQUENCY CONTROL
[LCTR]	LADDER CABLE TRAY	[CLOCK]	TIME CLOCK	[360]	360 CAMERA	[AFG]	ABOVE FINISHED GRADE	[AFF]	FAILURE CURRENT
[BRANCH]	BRANCH CIRCUIT HOMERUN. LINES INDICATE NUMBER OF CIRCUITS, NEUTRAL, AND SWITCH LEG CONDUCTORS. ONE SEPARATE GREEN GROUNDING CONDUCTOR SHALL BE PROVIDED FOR EACH HOMERUN, NOT SHOWN	[RECT]	RECTIFIER, CATHODIC PROTECTION SANITARY	[VENT]	VENTILATOR OR FAN COIL UNIT OUTLET	[AH]	AMPERE HOUR	[AFH]	ABOVE FINISHED HOUR
[PB]	PULL BOX	[CONDUIT]	CONDUIT TERMINATED 6" (152mm) AFF IN STANDARD BOX FOR EXTENSION TO EQUIPMENT AS DIRECTED.	[CARD]	CARD ACCESS READER; LETTER INDICATES AS FOLLOWS: M=MOUNT C=CEILING D=DESK F=FLUSH H=HIDDEN M=MULLION P=PEDESTAL R=RACK S-SURFACE T=TECHNOLOGY/TYPE	[AIC]	AMPERE INTERRUPTING CAPACITY	[AIC]	AMPERE INTERRUPTING CAPACITY
[W]	WIREWAY	[CONDUIT]	CONDUIT TERMINATED W/COUPLING (FLUSH W/FINISHED FLOOR) FOR EXTENSION TO EQUIPMENT AS DIRECTED.	[B-BARCODE]	B-BARCODE	[AMP]	AMPERE	[ASC]	AMPS SHORT CIRCUIT
[RC]	RIGID CONDUIT LINE = RC	[CONDUIT]	CONDUIT TERMINATED W/COUPLING (FLUSH W/FINISHED FLOOR) FOR EXTENSION TO EQUIPMENT AS DIRECTED.	[F-ELEVATOR]	F-ELEVATOR FLOOR CALL	[AT]	AMPERE TRIP	[ASC]	AMPS SHORT CIRCUIT
[DB]	DIRECT BURIAL CABLE = DB	[CONDUIT]	CONDUIT TERMINATED W/COUPLING (FLUSH W/FINISHED FLOOR) FOR EXTENSION TO EQUIPMENT AS DIRECTED.	[H-ELEVATOR]	H-ELEVATOR HALL CALL	[ATS]	AUTOMATIC TRANSFER SWITCH	[AV]	AUDIO VISUAL
[P]	POWER DUCT = P	[CONDUIT]	CONDUIT TERMINATED W/COUPLING (FLUSH W/FINISHED FLOOR) FOR EXTENSION TO EQUIPMENT AS DIRECTED.	[T-TOKEN]	T-TOKEN	[AVO]	AUTOMATIC VIDEO	[AV]	AUDIO VISUAL
[AV]	AUDIO VISUAL LINE = AV	[CONDUIT]	CONDUIT TERMINATED W/COUPLING (FLUSH W/FINISHED FLOOR) FOR EXTENSION TO EQUIPMENT AS DIRECTED.	[ELECTRONIC LOCK]	ELECTRONIC LOCK; LETTER INDICATES AS FOLLOWS: M=MOUNT C=CEILING D=DESK F=FLUSH H=HIDDEN M=MULLION P=PEDESTAL R=RACK S-SURFACE T=TECHNOLOGY/TYPE	[C]	CONDUIT	[C]	CONDUIT
[CATV]	CABLE TELEVISION LINE = CATV	[CONDUIT]	CONDUIT TERMINATED W/COUPLING (FLUSH W/FINISHED FLOOR) FOR EXTENSION TO EQUIPMENT AS DIRECTED.	[INTERCOM]	INTERCOM; LETTER INDICATES AS FOLLOWS: M=MOUNT C=CEILING D=DESK F=FLUSH H=HIDDEN M=MULLION P=PEDESTAL R=RACK S-SURFACE T=TECHNOLOGY/TYPE	[CAB]	CABINET	[CAB]	CABINET
[CCTV]	CLOSED CIRCUIT TELEVISION LINE = CCTV	[CONDUIT]	CONDUIT TERMINATED W/COUPLING (FLUSH W/FINISHED FLOOR) FOR EXTENSION TO EQUIPMENT AS DIRECTED.	[M-MOUNT]	M=MOUNT	[CALC]	CALCULATE	[CALC]	CALCULATE
[FO]	FIBEROPTICS LINE = FO	[CONDUIT]	CONDUIT TERMINATED W/COUPLING (FLUSH W/FINISHED FLOOR) FOR EXTENSION TO EQUIPMENT AS DIRECTED.	[NURSE CALL]	NURSE CALL LINE = NC	[CAP]	CAPACITOR	[CAP]	CAPACITOR
[COM]	COMMUNICATIONS LINE = COM	[CONDUIT]	CONDUIT TERMINATED W/COUPLING (FLUSH W/FINISHED FLOOR) FOR EXTENSION TO EQUIPMENT AS DIRECTED.	[SWITCH]	SWITCH, THREE WAY	[DISC]	DISCONNECT	[DISC]	DISCONNECT
[INTERCOM]	INTERCOM LINE = I	[CONDUIT]	CONDUIT TERMINATED W/COUPLING (FLUSH W/FINISHED FLOOR) FOR EXTENSION TO EQUIPMENT AS DIRECTED.	[SWITCH]	SWITCH, THREE WAY DIMMER	[DISTR]	DISTRIBUTION	[DISTR]	DISTRIBUTION
[NURSE CALL]	NURSE CALL LINE = NC	[CONDUIT]	CONDUIT TERMINATED W/COUPLING (FLUSH W/FINISHED FLOOR) FOR EXTENSION TO EQUIPMENT AS DIRECTED.	[SWITCH]	SWITCH, THREE WAY OCCUPANCY SENSOR	[DISTR]	DISTRIBUTION	[DISTR]	DISTRIBUTION
[SUBSTATION]	SUBSTATION	[CONDUIT]	CONDUIT TERMINATED W/COUPLING (FLUSH W/FINISHED FLOOR) FOR EXTENSION TO EQUIPMENT AS DIRECTED.	[SWITCH]	SWITCH, DIMMER	[DISTR]	DISTRIBUTION	[DISTR]	DISTRIBUTION
[HI VOLTAGE]	HI VOLTAGE SWITCH ON CONCRETE PAD	[CONDUIT]	CONDUIT TERMINATED W/COUPLING (FLUSH W/FINISHED FLOOR) FOR EXTENSION TO EQUIPMENT AS DIRECTED.	[SWITCH]	SWITCH, DOOR LAMB	[DISTR]	DISTRIBUTION	[DISTR]	DISTRIBUTION
[LOW VOLTAGE]	LOW VOLTAGE SWITCH ON CONCRETE PAD	[CONDUIT]	CONDUIT TERMINATED W/COUPLING (FLUSH W/FINISHED FLOOR) FOR EXTENSION TO EQUIPMENT AS DIRECTED.	[SWITCH]	SWITCH, FOUR WAY OCCUPANCY SENSOR	[DISTR]	DISTRIBUTION	[DISTR]	DISTRIBUTION
[DUAL POWER]	DUAL POWER AND TELECOMMUNICATIONS MANHOLE	[CONDUIT]	CONDUIT TERMINATED W/COUPLING (FLUSH W/FINISHED FLOOR) FOR EXTENSION TO EQUIPMENT AS DIRECTED.	[SWITCH]	SWITCH, FUSED	[DISTR]	DISTRIBUTION	[DISTR]	DISTRIBUTION
[BUSWAY]	BUSWAY	[CONDUIT]	CONDUIT TERMINATED W/COUPLING (FLUSH W/FINISHED FLOOR) FOR EXTENSION TO EQUIPMENT AS DIRECTED.	[SWITCH]	SWITCH, KEY OPERATED	[DISTR]	DISTRIBUTION	[DISTR]	DISTRIBUTION
[DISTRIBUTION PANEL]	DISTRIBUTION PANEL	[CONDUIT]	CONDUIT TERMINATED W/COUPLING (FLUSH W/FINISHED FLOOR) FOR EXTENSION TO EQUIPMENT AS DIRECTED.	[SWITCH]	SWITCH, WITH PILOT LIGHT	[DISTR]	DISTRIBUTION	[DISTR]	DISTRIBUTION
[LIGHTING PANEL]	LIGHTING PANEL	[CONDUIT]	CONDUIT TERMINATED W/COUPLING (FLUSH W/FINISHED FLOOR) FOR EXTENSION TO EQUIPMENT AS DIRECTED.	[SWITCH]	SWITCH, OCCUPANCY SENSOR	[DISTR]	DISTRIBUTION	[DISTR]	DISTRIBUTION
[PANELBOARD CABINET, FLUSH MOUNTED]	PANELBOARD CABINET, FLUSH MOUNTED	[CONDUIT]	CONDUIT TERMINATED W/COUPLING (FLUSH W/FINISHED FLOOR) FOR EXTENSION TO EQUIPMENT AS DIRECTED.	[SWITCH]	SWITCH, OCCUPANCY SENSOR DIMMER	[DISTR]	DISTRIBUTION	[DISTR]	DISTRIBUTION
[PANELBOARD CABINET, SURFACE MOUNTED]	PANELBOARD CABINET, SURFACE MOUNTED	[CONDUIT]	CONDUIT TERMINATED W/COUPLING (FLUSH W/FINISHED FLOOR) FOR EXTENSION TO EQUIPMENT AS DIRECTED.	[SWITCH]	SWITCH, PUSH BUTTON	[DISTR]	DISTRIBUTION	[DISTR]	DISTRIBUTION
[RECEPTACLE, CLOCK HANGER]	RECEPTACLE, CLOCK HANGER	[CONDUIT]	CONDUIT TERMINATED W/COUPLING (FLUSH W/FINISHED FLOOR) FOR EXTENSION TO EQUIPMENT AS DIRECTED.	[SWITCH]	SWITCH, PHOTOCELL	[DISTR]	DISTRIBUTION	[DISTR]	DISTRIBUTION
[RECEPTACLE, DUPLEX]	RECEPTACLE, DUPLEX	[CONDUIT]	CONDUIT TERMINATED W/COUPLING (FLUSH W/FINISHED FLOOR) FOR EXTENSION TO EQUIPMENT AS DIRECTED.	[SWITCH]	SWITCH, REMOTE CONTROL	[DISTR]	DISTRIBUTION	[DISTR]	DISTRIBUTION
[RECEPTACLE, DUPLEX ON EMERGENCY POWER]	RECEPTACLE, DUPLEX ON EMERGENCY POWER	[CONDUIT]	CONDUIT TERMINATED W/COUPLING (FLUSH W/FINISHED FLOOR) FOR EXTENSION TO EQUIPMENT AS DIRECTED.	[SWITCH]	SWITCH, WEATHER PROOF	[DISTR]	DISTRIBUTION	[DISTR]	DISTRIBUTION
[RECEPTACLE, GFCI DUPLEX]	RECEPTACLE, GFCI DUPLEX	[CONDUIT]	CONDUIT TERMINATED W/COUPLING (FLUSH W/FINISHED FLOOR) FOR EXTENSION TO EQUIPMENT AS DIRECTED.	[SWITCH]	SWITCH, EXPLOSION PROOF	[DISTR]	DISTRIBUTION	[DISTR]	DISTRIBUTION
[RECEPTACLE, QUADRUPLEX]	RECEPTACLE, QUADRUPLEX	[CONDUIT]	CONDUIT TERMINATED W/COUPLING (FLUSH W/FINISHED FLOOR) FOR EXTENSION TO EQUIPMENT AS DIRECTED.	[SWITCH]	SWITCH, TELECOMMUNICATIONS MANHOLE	[DISTR]	DISTRIBUTION	[DISTR]	DISTRIBUTION
[RECEPTACLE, SPECIAL PURPOSE 120V, 20A, 1 PHASE, 2-POLE, 3W, NEMA 5-20R]	RECEPTACLE, SPECIAL PURPOSE 120V, 20A, 1 PHASE, 2-POLE, 3W, NEMA 5-20R	[CONDUIT]	CONDUIT TERMINATED W/COUPLING (FLUSH W/FINISHED FLOOR) FOR EXTENSION TO EQUIPMENT AS DIRECTED.	[SWITCH]	SWITCH, TELECOMMUNICATIONS WALL RECEPTACLE	[DISTR]	DISTRIBUTION	[DISTR]	DISTRIBUTION
[RECEPTACLE, SPECIAL PURPOSE 208V, 20A, 1 PHASE, 2-POLE, 3W, NEMA 6-20R]	RECEPTACLE, SPECIAL PURPOSE 208V, 20A, 1 PHASE, 2-POLE, 3W, NEMA 6-20R	[CONDUIT]	CONDUIT TERMINATED W/COUPLING (FLUSH W/FINISHED FLOOR) FOR EXTENSION TO EQUIPMENT AS DIRECTED.	[SWITCH]	SWITCH, TELEVISION FLOOR RECEPTACLE	[DISTR]	DISTRIBUTION	[DISTR]	DISTRIBUTION
[RECEPTACLE, SPECIAL PURPOSE 120V, 30A, 1 PHASE, 2-POLE, 3W, NEMA 5-30R]	RECEPTACLE, SPECIAL PURPOSE 120V, 30A, 1 PHASE, 2-POLE, 3W, NEMA 5-30R	[CONDUIT]	CONDUIT TERMINATED W/COUPLING (FLUSH W/FINISHED FLOOR) FOR EXTENSION TO EQUIPMENT AS DIRECTED.	[SWITCH]	SWITCH, TELEVISION WALL RECEPTACLE	[DISTR]	DISTRIBUTION	[DISTR]	DISTRIBUTION
[RECEPTACLE, SPECIAL PURPOSE 208V, 30A, 1 PHASE, 2-POLE, 3W, NEMA 6-30R]	RECEPTACLE, SPECIAL PURPOSE 208V, 30A, 1 PHASE, 2-POLE, 3W, NEMA 6-30R	[CONDUIT]	CONDUIT TERMINATED W/COUPLING (FLUSH W/FINISHED FLOOR) FOR EXTENSION TO EQUIPMENT AS DIRECTED.	[SWITCH]	SWITCH, TELEVISION CEILING RECEPTACLE	[DISTR]	DISTRIBUTION	[DISTR]	DISTRIBUTION
[RECEPTACLE, SPECIAL PURPOSE 208V, 30A, 3 PHASE, 3-POLE, 4W, NEMA 15-60R]	RECEPTACLE, SPECIAL PURPOSE 208V, 30A, 3 PHASE, 3-POLE, 4W, NEMA 15-60R	[CONDUIT]	CONDUIT TERMINATED W/COUPLING (FLUSH W/FINISHED FLOOR) FOR EXTENSION TO EQUIPMENT AS DIRECTED.	[SWITCH]	SWITCH, TELEVISION CEILING RECEPTACLE	[DISTR]	DISTRIBUTION	[DISTR]	DISTRIBUTION
[RECEPTACLE, SPECIAL PURPOSE 208V, 30A, 3 PHASE, 3-POLE, 4W, NEMA 15-60R]	RECEPTACLE, SPECIAL PURPOSE 208V, 30A, 3 PHASE, 3-POLE, 4W, NEMA 15-60R	[CONDUIT]	CONDUIT TERMINATED W/COUPLING (FLUSH W/FINISHED FLOOR) FOR EXTENSION TO EQUIPMENT AS DIRECTED.	[SWITCH]	SWITCH, TELEVISION CEILING RECEPTACLE	[DISTR]	DISTRIBUTION	[DISTR]	DISTRIBUTION
[RECEPTACLE, SPECIAL PURPOSE 208V, 30A, 3 PHASE, 3-POLE, 4W, NEMA 15-60R]	RECEPTACLE, SPECIAL PURPOSE 208V, 30A, 3 PHASE, 3-POLE, 4W, NEMA 15-60R	[CONDUIT]	CONDUIT TERMINATED W/COUPLING (FLUSH W/FINISHED FLOOR) FOR EXTENSION TO EQUIPMENT AS DIRECTED.	[SWITCH]	SWITCH, TELEVISION CEILING RECEPTACLE	[DISTR]	DISTRIBUTION	[DISTR]	DISTRIBUTION
[RECEPTACLE, SPECIAL PURPOSE 208V, 30A, 3 PHASE, 3-POLE, 4W, NEMA 15-60R]	RECEPTACLE, SPECIAL PURPOSE 208V, 30A, 3 PHASE, 3-POLE, 4W, NEMA 15-60R	[CONDUIT]	CONDUIT TERMINATED W/COUPLING (FLUSH W/FINISHED FLOOR) FOR EXTENSION TO EQUIPMENT AS DIRECTED.	[SWITCH]	SWITCH, TELEVISION CEILING RECEPTACLE	[DISTR]	DISTRIBUTION	[DISTR]	DISTRIBUTION
[RECEPTACLE, SPECIAL PURPOSE 208V, 30A, 3 PHASE, 3-POLE, 4W, NEMA 15-60R]	RECEPTACLE, SPECIAL PURPOSE 208V, 30A, 3 PHASE, 3-POLE, 4W, NEMA 15-60R	[CONDUIT]	CONDUIT TERMINATED W/COUPLING (FLUSH W/FINISHED FLOOR) FOR EXTENSION TO EQUIPMENT AS DIRECTED.	[SWITCH]	SWITCH, TELEVISION CEILING RECEPTACLE	[DISTR]	DISTRIBUTION	[DISTR]	DISTRIBUTION
[RECEPTACLE, SPECIAL PURPOSE 208V, 30A, 3 PHASE, 3-POLE, 4W, NEMA 15-60R]	RECEPTACLE, SPECIAL PURPOSE 208V, 30A, 3 PHASE, 3-POLE, 4W, NEMA 15-60R	[CONDUIT]	CONDUIT TERMINATED W/COUPLING (FLUSH W/FINISHED FLOOR) FOR EXTENSION TO EQUIPMENT AS DIRECTED.	[SWITCH]	SWITCH, TELEVISION CEILING RECEPTACLE	[DISTR]	DISTRIBUTION	[DISTR]	DISTRIBUTION
[RECEPTACLE, SWITCHED DUPLEX]	RECEPTACLE, SWITCHED DUPLEX	[CONDUIT]	CONDUIT TERMINATED W/COUPLING (FLUSH W/FINISHED FLOOR) FOR EXTENSION TO EQUIPMENT AS DIRECTED.	[SWITCH]	SWITCH, TELEVISION CEILING RECEPTACLE	[DISTR]	DISTRIBUTION	[DISTR]	DISTRIBUTION
[DROP CORD]	DROP CORD, SINGLE CONVENIENCE OUTLET, 3-WIRE, GROUNDING TYPE, 20A, W/12 CONDUCTORS IN FLEXIBLE CORD (CENTER LINE OF OUTLET: 6" (152mm) AFF. MINIMUM).	[CONDUIT]	CONDUIT TERMINATED W/COUPLING (FLUSH W/FINISHED FLOOR) FOR EXTENSION TO EQUIPMENT AS DIRECTED.	[SWITCH]	SWITCH, TELEVISION CEILING RECEPTACLE	[DISTR]	DISTRIBUTION	[DISTR]	DISTRIBUTION
[ELECTRICAL STRIP MOLD]	ELECTRICAL STRIP MOLD (OUTLETS ON 2'-0" (610mm) CENTERS OR AS DESIGNATED ON DRAWINGS), MTD 3'-6" (1067mm) AFF OR AS INDICATED.	[CONDUIT]	CONDUIT TERMINATED W/COUPLING (FLUSH W/FINISHED FLOOR) FOR EXTENSION TO EQUIPMENT AS DIRECTED.	[SWITCH]	SWITCH, TELEVISION CEILING RECEPTACLE	[DISTR]	DISTRIBUTION	[DISTR]	DISTRIBUTION

CONSULTANTS: 	ARCHITECT/ENGINEERS:  FOURFRONT DESIGN, INC. 517 7TH STREET RAPID CITY, SOUTH DAKOTA 57706(605) 342-9470 FAX: (605) 342-2377 WWW.FOURFRONTDESIGN.COM	Drawing Title ELECTRICAL LEGEND AND ABBREVIATIONS	Project Title REPAIR EXTERIOR FINISHES	Project Number 437-21-111	Office of Construction and Facilities Management 
		Approved: Project Director CLIFFORD HALVORSON	Location VA HCS FARGO, ND	Building Number E-000	
		Date 11/10/2021	Checked RD	Drawn WW	

one and one half inches = one foot
 three quarters inch = one foot
 one half inch = one foot
 three eighths inch = one foot
 one quarter inch = one foot
 one eighth inch = one foot
 one sixteenth inch = one foot



1 SITE MAP
E100
SCALE: 1/128" = 1'



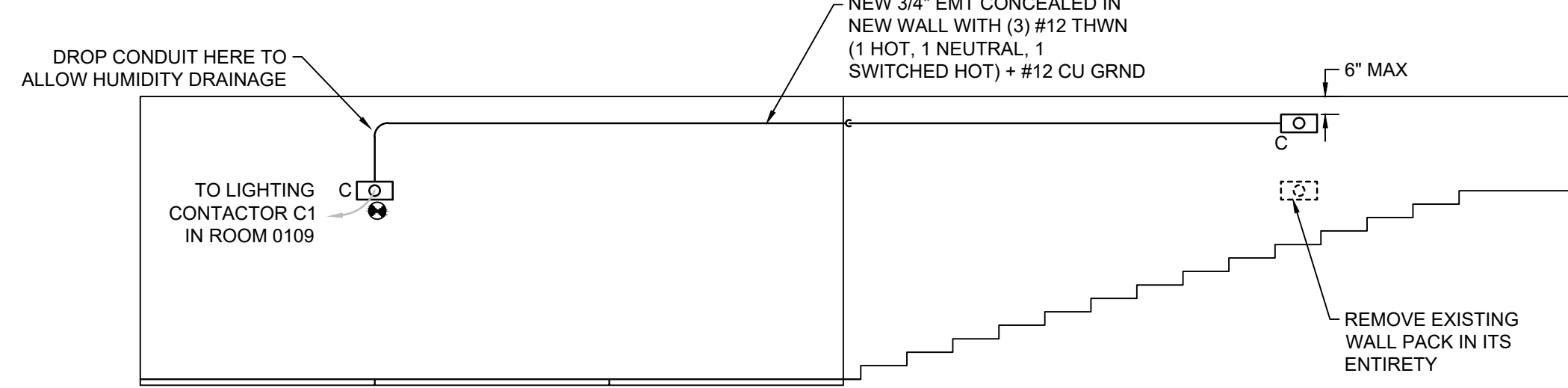
2 EXTERIOR FLOORPLAN - LIGHTING REMODEL
E100
SCALE: 1/8" = 1'

LIGHTING FIXTURE SCHEDULE														
SYMBOL	LETTER DESIGNATION	MANUFACTURER	DESCRIPTION	FIXTURE	DATE/LOG NO.	LOCATION	TYPE	HEIGHT	TYPE	NO.	WATTS	LUMEN	NOTES	HYPERLINK
⊕	A	EXISTING TO REMAIN	BOLLARD LUMINAIRE	-	-	-	-	-	-	-	-	-	-	-
⊕	B	EXISTING TO REMAIN	POLE MOUNTED LUMINAIRE	-	-	-	-	-	-	-	-	-	-	-
⊕	C	HUBBELL LIGHTING	SLENDER WALL PACK	SG1-30-3K7-FT-UNV-DBT-SG1-SPC	-	WALL	SURFACE	*	LED	-	29	2913	1,2,3	SPEC

LUMINAIRE NOTES:
 1. COLOR/FINISH TO BE DETERMINED BY ARCHITECT.
 2. PROVIDE ALL NECESSARY HARDWARE OR KITS FOR MOUNTING LUMINAIRE AS NOTED BY LOCATION AND TYPE.
 3. PROVIDE LUMINAIRE WITH VANDAL RESISTANT LENS.

CONTROL NOTES:
 A. ON BOARD OCCUPANCY SENSING.
 B. ON BOARD PHOTO CONTROL.
 C. 0-10 V DIMMING.
 D. TRIAC DIMMING.
 E. EMERGENCY BACKUP BATTERY ON FIXTURES WITH ADDITIONAL E TAG.

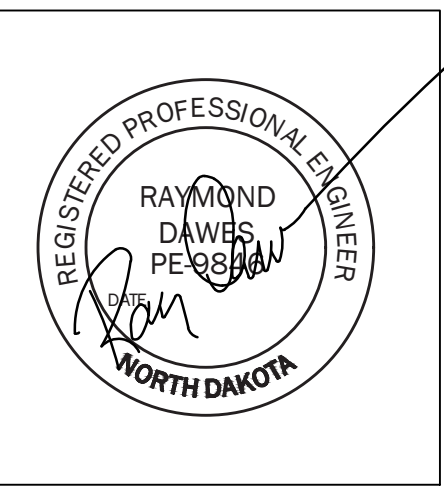
* REUSE EXISTING MOUNTING HEIGHT. REFER TO ELEVATION VIEW FOR NEW MOUNTING HEIGHTS.



3 RETAINING WALL ELEVATION - LIGHTING REMODEL
E100
SCALE: NTS

Revisions:	Date

CONSULTANTS:



ARCHITECT/ENGINEERS:
FOURFRONT DESIGN, INC.
 517 7TH STREET
 RAPID CITY, SOUTH DAKOTA
 BR70(605) 342-9470
 FAX: (605) 342-2377
 WWW.FOURFRONTDESIGN.COM

Drawing Title
ELECTRICAL PLANS
 Approved: Project Director
CLIFFORD HALVORSON
 437-21-101

Project Title
REPAIR EXTERIOR FINISHES
 Location
VA HCS FARGO, ND
 Date
 11/10/2021
 Checked
 RD
 Drawn
 WW

Project Number
437-21-111
 Building Number
 Drawing Number
E-100
 Dwg. 39 of 39

Office of Construction and Facilities Management
 Department of Veterans Affairs

100% CONSTRUCTION DOCUMENTS