



VA #437-21-160

Upgrade Medical Gas System

Fargo VA Health Care System

2101 N. Elm Street

Fargo, ND 58102

Construction Document Plans

CD-1 Design Package

Volume 2 of 4

July 07, 2021

RAPID CITY, SD

517 SEVENTH STREET RAPID CITY, SD 57701

P. 605.342.9470

F.605.342.2377

HELENA, MT

46 HIBBARD WAY HELENA, MT 59601

P. 406.441.4000

www.fourfrontdesign.com

UPGRADE MEDICAL GAS SYSTEM

FARGO VA HEALTH CARE SYSTEM

2101 ELM STREET N

FARGO, NORTH DAKOTA 58102

VA PROJECT NUMBER: 437-21-160

PROJECT LOCATION



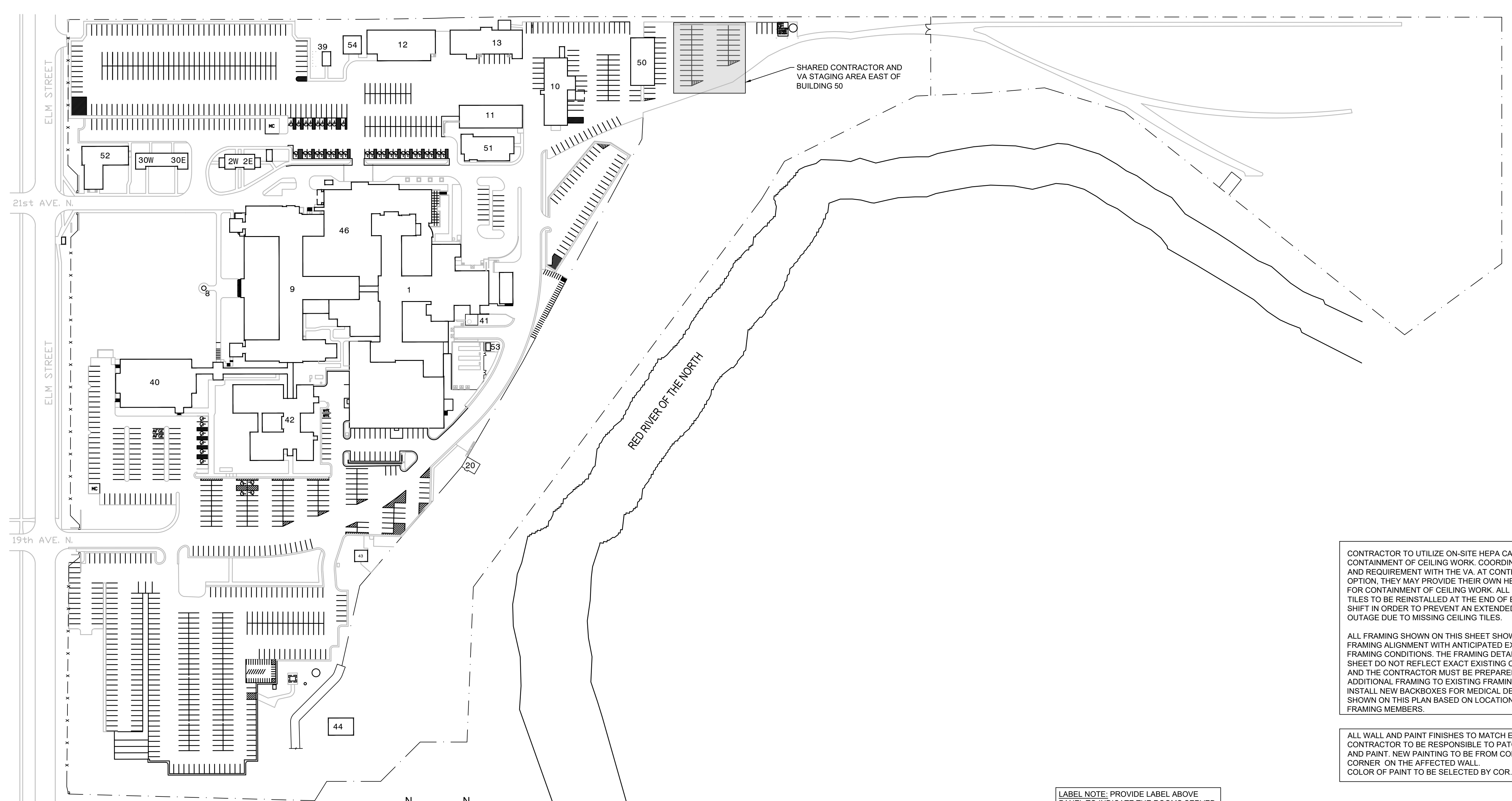
SHEET LIST TABLE	
SHEET NUMBER	SHEET TITLE
G-0.00	COVER SHEET
A-0.01	PROJECT DETAILS
A-1.11	FIRST FLOOR LIFE SAFETY PLAN
A-1.21	SECOND FLOOR LIFE SAFETY PLAN
A-1.31	THIRD FLOOR LIFE SAFETY PLAN
A-1.41	FOURTH FLOOR LIFE SAFETY PLAN
A-2.01	BASEMENT - PHASING PLAN
A-2.11	FIRST FLOOR - PHASING PLAN
A-2.21	SECOND FLOOR - PHASING PLAN
A-2.31	THIRD FLOOR - PHASING PLAN
A-2.41	FOURTH FLOOR - PHASING PLAN
P-0.01	GENERAL NOTES, ABBREVIATIONS, SYMBOLS AND SCHEDULES
P-1.01	BASEMENT - DEMOLITION PLAN
P-1.02	BASEMENT - REMODEL PLAN
P-1.03	VACUUM AND COMPRESSOR EQUIPMENT 3D VIEWS
P-1.11	FIRST FLOOR - DEMOLITION PLAN
P-1.12	FIRST FLOOR - REMODEL PLAN
P-1.21	SECOND FLOOR - DEMOLITION PLAN 1
P-1.22	SECOND FLOOR - DEMOLITION PLAN 2
P-1.23	SECOND FLOOR - DEMOLITION PLAN 3
P-1.24	SECOND FLOOR - REMODEL PLAN 1
P-1.25	SECOND FLOOR - REMODEL PLAN 2
P-1.26	SECOND FLOOR - REMODEL PLAN 3
P-1.31	THIRD FLOOR - DEMOLITION PLAN
P-1.32	THIRD FLOOR - REMODEL PLAN
P-1.41	FOURTH FLOOR - DEMOLITION PLAN
P-1.42	FOURTH FLOOR - REMODEL PLAN
E-0.00	ELECTRICAL LEGEND AND ABBREVIATIONS
E-1.01	BASEMENT ELECTRICAL PLANS
E-1.02	BASEMENT I&C PLANS AND ALARM PANEL COMMUNICATION DETAIL
E-1.11	FIRST FLOOR ELECTRICAL DEMOLITION PLAN
E-1.12	FIRST FLOOR NEW ELECTRICAL PLAN
E-1.21	SECOND FLOOR ELECTRICAL DEMOLITION PLAN AREA 1
E-1.22	SECOND FLOOR ELECTRICAL DEMOLITION PLAN AREA 2
E-1.23	SECOND FLOOR NEW ELECTRICAL PLAN AREA 1
E-1.24	SECOND FLOOR NEW ELECTRICAL PLAN AREA 2
E-1.31	THIRD FLOOR ELECTRICAL DEMOLITION PLAN
E-1.32	THIRD FLOOR NEW ELECTRICAL PLAN
E-1.41	FOURTH FLOOR ELECTRICAL DEMOLITION PLAN
E-1.412	FOURTH FLOOR NEW ELECTRICAL PLAN

100% CONSTRUCTION DOCUMENTS

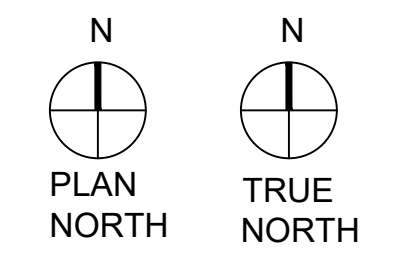
<table border="1" style="width: 100%; border-collapse: collapse;"> <thead> <tr><th>Revisions:</th><th>Date</th></tr> </thead> <tbody> <tr><td> </td><td> </td></tr> <tr><td> </td><td> </td></tr> <tr><td> </td><td> </td></tr> <tr><td> </td><td> </td></tr> <tr><td> </td><td> </td></tr> <tr><td> </td><td> </td></tr> <tr><td> </td><td> </td></tr> </tbody> </table>	Revisions:	Date															<p>CONSULTANTS:</p> <div style="border: 1px solid black; height: 30px; width: 100%;"></div>	<div style="text-align: center;">  ARCHITECT  FOURFRONT DESIGN INC. <small>FOURFRONT DESIGN, INC. 517 7TH STREET RAPID CITY, SOUTH DAKOTA 57701 PH: (605) 342-9470 FAX: (605) 342-2377 WWW.FOURFRONTDESIGN.COM</small> </div>	<table border="1" style="width: 100%; border-collapse: collapse;"> <tr><td>Drawing Title</td><td style="text-align: center;">COVER SHEET</td></tr> <tr><td>Approved: Project Director</td><td>Fargo VA Health Care System</td></tr> </table>	Drawing Title	COVER SHEET	Approved: Project Director	Fargo VA Health Care System	<table border="1" style="width: 100%; border-collapse: collapse;"> <tr><td>Project Title</td><td>UPGRADE MEDICAL GAS SYSTEM</td></tr> <tr><td>Location</td><td>2101 ELM ST N, FARGO, ND 58102</td></tr> <tr><td>Date</td><td>07/07/2021</td></tr> <tr><td>Checked</td><td>RD</td></tr> <tr><td>Drawn</td><td>BM</td></tr> </table>	Project Title	UPGRADE MEDICAL GAS SYSTEM	Location	2101 ELM ST N, FARGO, ND 58102	Date	07/07/2021	Checked	RD	Drawn	BM	<table border="1" style="width: 100%; border-collapse: collapse;"> <tr><td>Project Number</td><td>437-21-160</td></tr> <tr><td>Building Numbers</td><td>1,9,46</td></tr> <tr><td>Drawing Number</td><td>G-0.00</td></tr> <tr><td>Dwg.</td><td>1 of 40</td></tr> </table>	Project Number	437-21-160	Building Numbers	1,9,46	Drawing Number	G-0.00	Dwg.	1 of 40	<p>Office of Construction and Facilities Management</p>  <p>Department of Veterans Affairs</p>
Revisions:	Date																																											
Drawing Title	COVER SHEET																																											
Approved: Project Director	Fargo VA Health Care System																																											
Project Title	UPGRADE MEDICAL GAS SYSTEM																																											
Location	2101 ELM ST N, FARGO, ND 58102																																											
Date	07/07/2021																																											
Checked	RD																																											
Drawn	BM																																											
Project Number	437-21-160																																											
Building Numbers	1,9,46																																											
Drawing Number	G-0.00																																											
Dwg.	1 of 40																																											

one eighth inch = one foot
 one quarter inch = one foot
 one half inch = one foot
 three eighths inch = one foot
 one half inch = one foot
 three quarters inch = one foot
 one inch = one foot
 one and one half inches = one foot
 one and one half inches = one foot
 two inches = one foot
 three inches = one foot
 four inches = one foot

one eighth inch = one foot
 one quarter inch = one foot
 three eighths inch = one foot
 one half inch = one foot
 three quarters inch = one foot
 one inch = one foot
 one and one half inches = one foot
 two inches = one foot
 three inches = one foot
 four inches = one foot
 five inches = one foot
 six inches = one foot
 seven inches = one foot
 eight inches = one foot
 nine inches = one foot
 ten inches = one foot
 eleven inches = one foot
 twelve inches = one foot



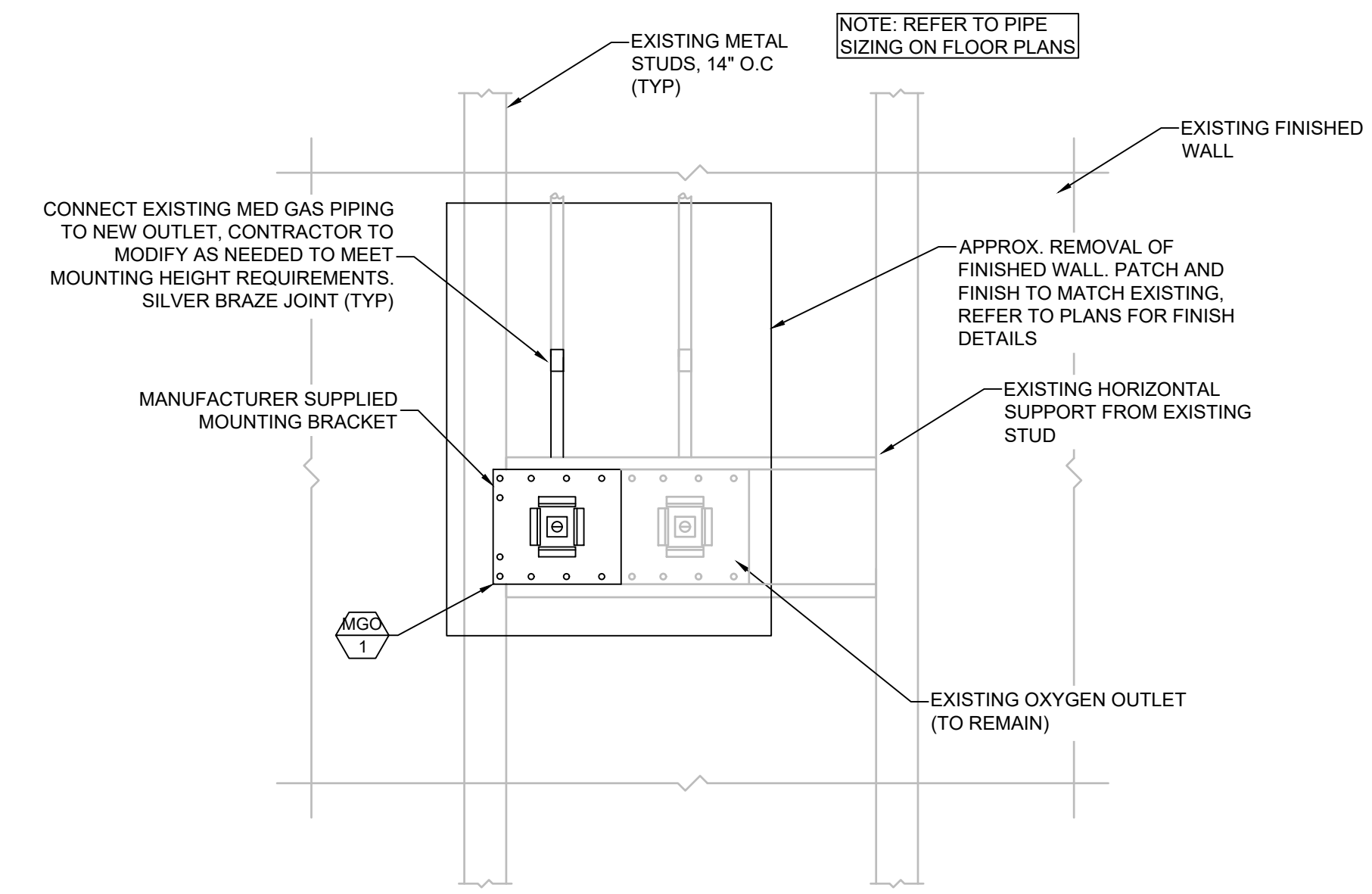
1 SITE PLAN - FARGO VA
 A-0.01 SCALE: NOT TO SCALE



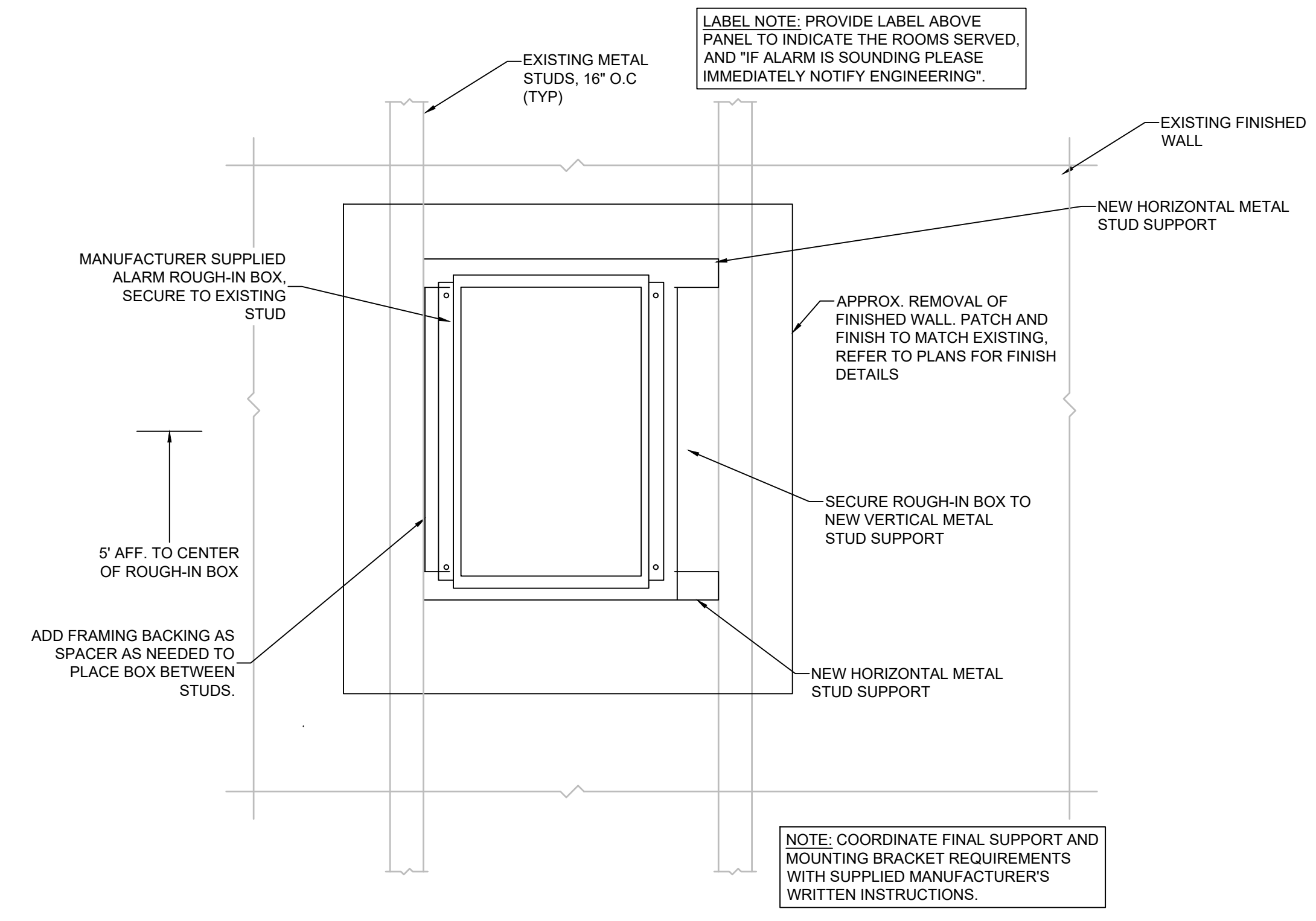
CONTRACTOR TO UTILIZE ON-SITE HEPA CART FOR CONTAINMENT OF CEILING WORK. COORDINATE USAGE AND REQUIREMENT WITH THE VA. AT CONTRACTOR OPTION, THEY MAY PROVIDE THEIR OWN HEPA CART(S) FOR CONTAINMENT OF CEILING WORK. ALL CEILING TILES TO BE REINSTALLED AT THE END OF EVERY WORK SHIFT IN ORDER TO PREVENT AN EXTENDED SPRINKLER OUTAGE DUE TO MISSING CEILING TILES.

ALL FRAMING SHOWN ON THIS SHEET SHOWS NEW FRAMING ALIGNMENT WITH ANTICIPATED EXISTING FRAMING CONDITIONS. THE FRAMING DETAILS ON THIS SHEET DO NOT REFLECT EXACT EXISTING CONDITIONS, AND THE CONTRACTOR MUST BE PREPARED TO ADD ADDITIONAL FRAMING TO EXISTING FRAMING TO SOLIDLY INSTALL NEW BACKBOXES FOR MEDICAL DEVICES SHOWN ON THIS PLAN BASED ON LOCATION OF EXISTING FRAMING MEMBERS.

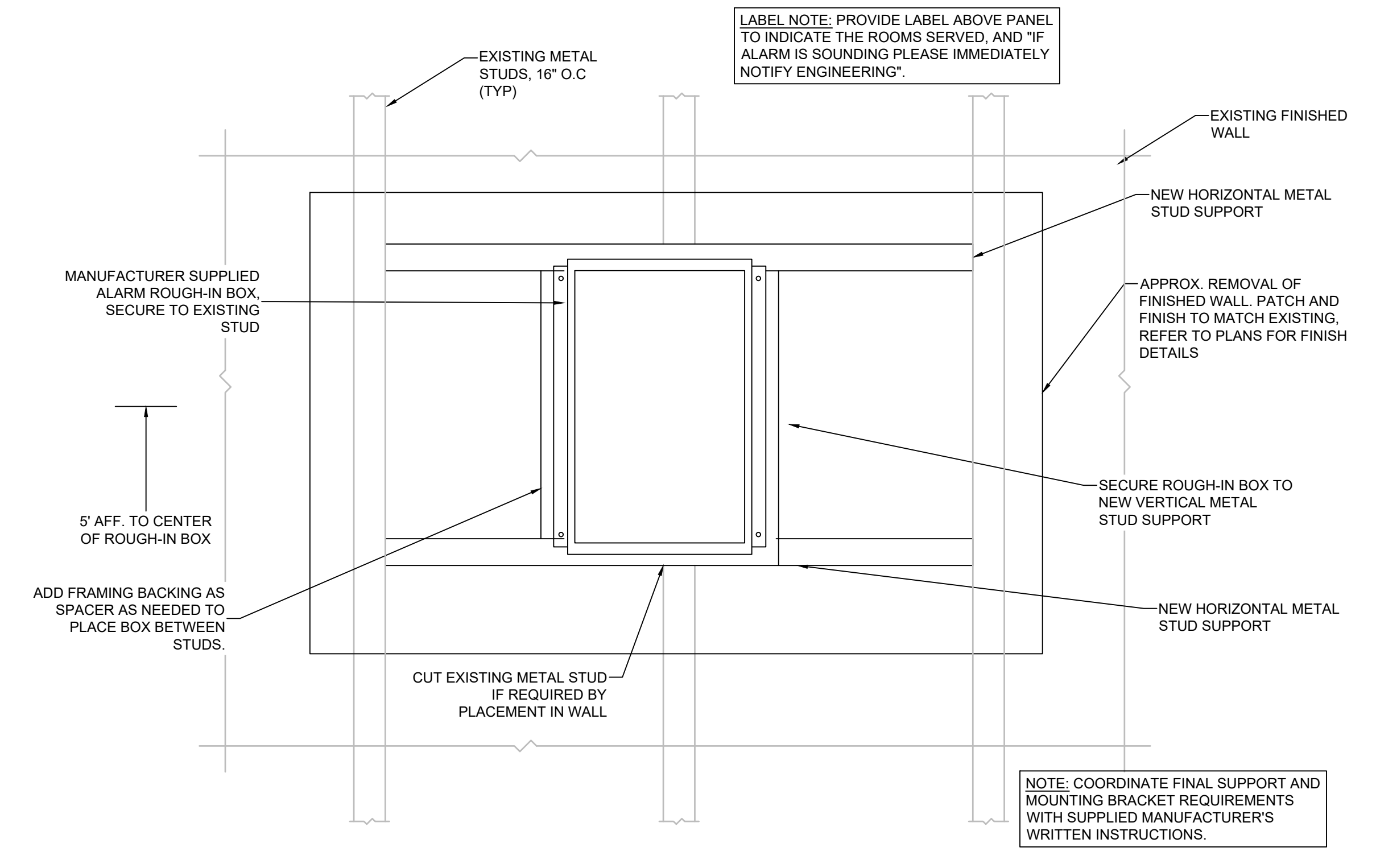
ALL WALL AND PAINT FINISHES TO MATCH EXISTING. CONTRACTOR TO BE RESPONSIBLE TO PATCH WALL AND PAINT. NEW PAINTING TO BE FROM CORNER TO CORNER ON THE AFFECTED WALL. COLOR OF PAINT TO BE SELECTED BY COR.



2 MEDICAL GAS OUTLET MOUNTING DETAIL
 A-0.01 SCALE: NTS



3 ZONE ALARM PANEL MOUNTING DETAIL
 A-0.01 SCALE: NTS



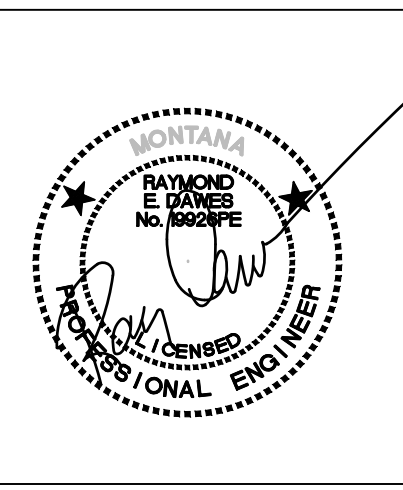
ALARM PANEL MOUNTING THROUGH EXISTING STUD

ALARM PANEL MOUNTING BETWEEN EXISTING STUDS

100% CONSTRUCTION DOCUMENTS

Revisions:	Date:

CONSULTANTS:



ARCHITECT
FOURFRONT DESIGN INC.
 517 7TH STREET
 RAPID CITY, SOUTH DAKOTA 57701
 PH: (605) 342-9470
 FAX: (605) 342-2377
 WWW.FOURFRONTDESIGN.COM

Drawing Title
PROJECT DETAILS

Approved: Project Director
Fargo VA Health Care System

Project Title
UPGRADE MEDICAL GAS SYSTEM

Location
 2101 ELM ST N, FARGO, ND 58102

Date
 07/07/2021

Checked
 RD

Drawn
 BM

Project Number
 437-21-160

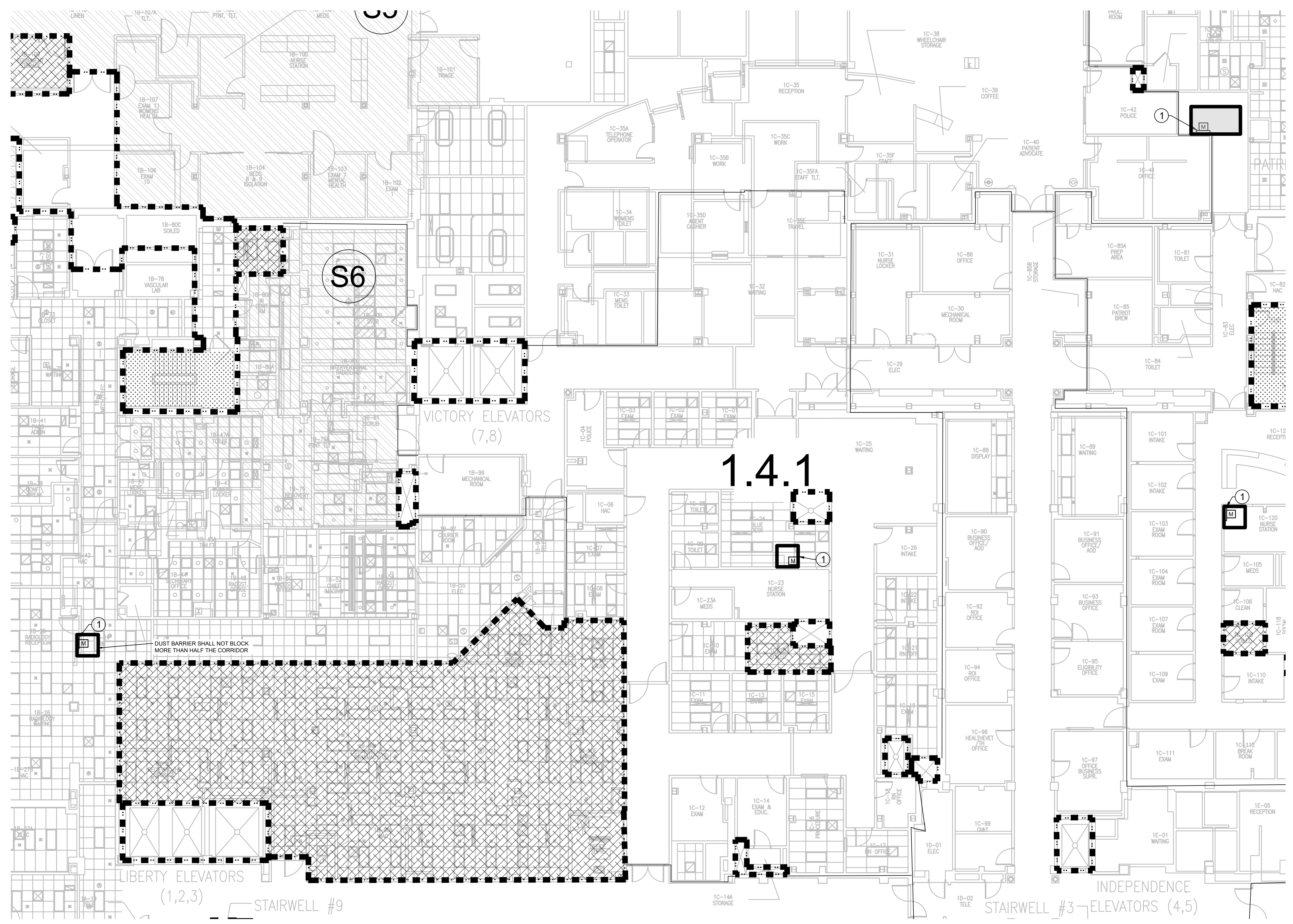
Building Numbers
1,946

Drawing Number
A-0.01

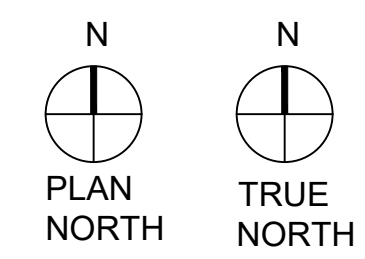
Dwg. 2 of 40

Office of Construction and Facilities Management
 Department of Veterans Affairs

one eighth inch = one foot
 one quarter inch = one foot
 three eighths inch = one foot
 one half inch = one foot
 three quarters inch = one foot
 one and one half inches = one foot
 two inches = one foot



1 FIRST FLOOR LIFE SAFETY PLAN
 A-1.11 SCALE: 3/32" = 1'-0"



GENERAL NOTES:

1. THERE ARE OTHER UTILITIES, EQUIPMENT, ETC IN THIS SPACE THAT ARE NOT SHOWN FOR CLARITY. CONTRACTOR TO ACCOUNT FOR THESE ITEMS.
2. ALL MED GAS PIPING IS LOCATED IN CEILINGS AND WALLS. PATCH WALLS AFTER WORK IS COMPLETE.
3. PAINT TO MATCH EXISTING, COORDINATE WITH OWNER. IF COLOR CANNOT BE MATCHED, CONTRACTOR TO PAINT CORNER TO CORNER AND MAKE ACCENT WALL.
4. CONTRACTOR TO SCHEDULE WORK WITH THE VA COR.
5. MEDICAL GAS CERTIFICATIONS TO BE PERFORMED IN EACH AREA OR SYSTEM IMMEDIATELY AFTER IT IS COMPLETED.
6. ALL OLD TO NEW SWITCH OVER NEEDS TO HAPPEN IN ONE NIGHT SHUTDOWN AND CERTIFIED AT THE SAME TIME.

KEYED ARCHITECTURAL NOTES
 ① INSTALL DUST BARRIERS AROUND WORK AREA. PATCH AFFECTED AREA WITH 5/8" FIRE RATED GYP WALL AFTER WORK IS COMPLETE. FINISH TO MATCH EXISTING.

1ST FLOOR- EXISTING HEALTHCARE OCCUPANCY

COMPARTMENT ID	COMPARTMENT SQ. FT.	SPRINKLER SYSTEM	AREA USE	DISTANCE SMOKE	DISTANCE EXIT
1.1	8,728	FULL	HEALTHCARE	170'	92'
1.2	11,124	FULL	HEALTHCARE	170'	166'
1.3	20,636	FULL	HEALTHCARE	219'	166'
1.4	19,502	FULL	HEALTHCARE	120'	264'
1.4.1	8,233	FULL	HEALTHCARE	97'	264"
1.5	7,987	FULL	HEALTHCARE	99'	116'
1.6	9,945	FULL	HEALTHCARE	129'	127'
1.7	14,927	FULL	HEALTHCARE	151'	123'
1.8	5,204	FULL	HEALTHCARE	135'	137'
1.9	21,076	FULL	HEALTHCARE	176'	202'
TOTAL	126,462				

1ST FLOOR- SUITE INFORMATION

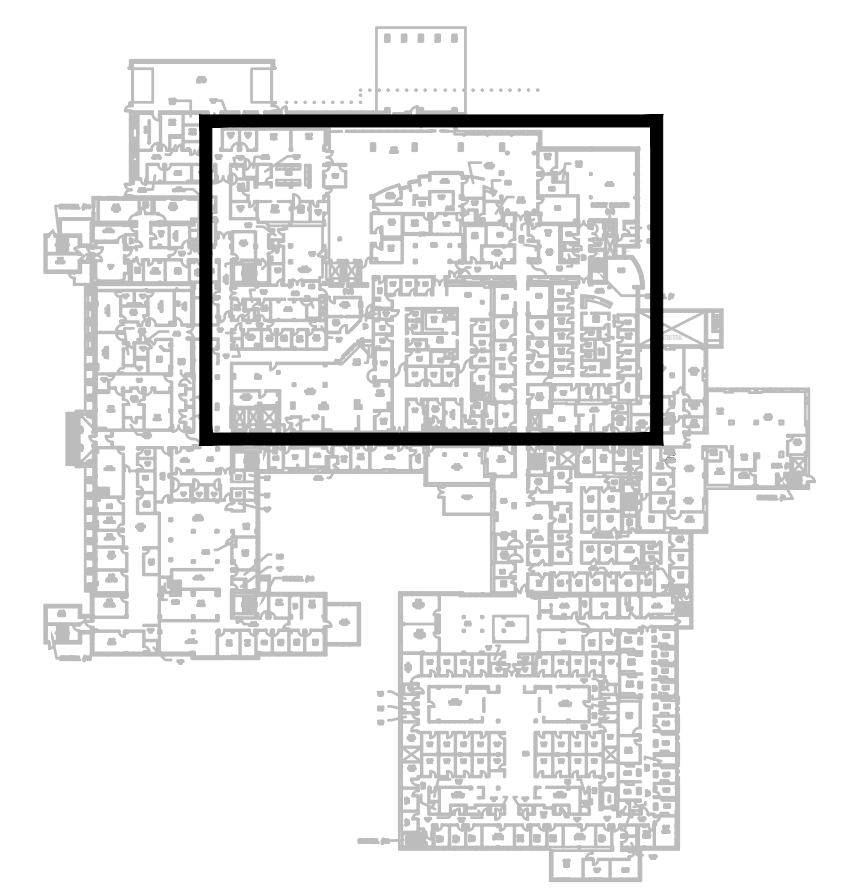
SUITE ID	SUITE ID SQ. FT.	SUITE TYPE	REMOTE EXIT REQUIREMENTS	DISTANCE TO EXIT ACCESS DOOR
(S1)	5,028	NON-PATIENT/ NON-SLEEPING	2	92'
(S2)	7,816	NON-SLEEPING	2	95'
(S3)	4,684	NON-SLEEPING	2	78'
(S4)	2,389	NON-SLEEPING	1	65'
(S5)	5,545	NON-SLEEPING	2	87'
(S6)	1,852	NON-SLEEPING	2	59'

HAZARDOUS AREA

ROOM ID	ROOM ID SQ. FT.
1B-80C	69
1B-90	3,612
1B-109	135
1B-110	63
1B-120	2,418
1B-122	103
1C-20	98
1C-108	40
1D-02	277
1D-23	104
1D-57	52
1D-73	48
1D-96	36
1D-103	42
1D-140	83
1D-141	217
1D-143	121
1E-20	742
1E-24	149
1E-34A	51

LINE LEGEND

- DUST BARRIER
- 1-HR FIRE RATED WALL
- 2-HR FIRE RATED WALL
- SMOKE BARRIER
- HAZARDOUS AREA - SMOKE RESISTIVE CONST.
- NON-PATIENT/NON-SLEEPING SUITE
- NON-SLEEPING SUITE
- SLEEPING SUITE
- AREA UNDER CONSTRUCTION
- EXIT STAIRWELL
- EXTERIOR EXIT
- SUITE ID
- COMPARTMENT ID



100% CONSTRUCTION DOCUMENTS

CONSULTANTS: Revisions: _____ Date _____	ARCHITECT FOURFRONT DESIGN INC. 517 7TH STREET RAPID CITY, SOUTH DAKOTA 57701 PH: (605) 342-9470 FAX: (605) 342-2377 WWW.FOURFRONTDESIGN.COM	Drawing Title FIRST FLOOR LIFE SAFETY PLAN	Project Title UPGRADE MEDICAL GAS SYSTEM	Project Number 437-21-160	Office of Construction and Facilities Management
		Approved: Project Director Fargo VA Health Care System	Location 2101 ELM ST N, FARGO, ND 58102	Building Numbers 1,946	

2.3

2.5

2.2

2.1

GENERAL NOTES:

1. THERE ARE OTHER UTILITIES, EQUIPMENT, ETC IN THIS SPACE THAT ARE NOT SHOWN FOR CLARITY. CONTRACTOR TO ACCOUNT FOR THESE ITEMS.
2. ALL MED GAS PIPING IS LOCATED IN CEILING AND WALLS. PATCH WALLS AFTER WORK IS COMPLETE.
3. PAINT TO MATCH EXISTING, COORDINATE WITH OWNER. IF COLOR CANNOT BE MATCHED, CONTRACTOR TO PAINT CORNER TO CORNER AND MAKE ACCENT WALL.
4. CONTRACTOR TO SCHEDULE WORK WITH THE VA COR.
5. MEDICAL GAS CERTIFICATIONS TO BE PERFORMED IN EACH AREA OR SYSTEM IMMEDIATELY AFTER IT IS COMPLETED.
6. ALL OLD TO NEW SWITCH OVER NEEDS TO HAPPEN IN ONE NIGHT SHUTDOWN AND CERTIFIED AT THE SAME TIME.

KEYED ARCHITECTURAL NOTES

- ① INSTALL DUST BARRIERS AROUND WORK AREA. PATCH AFFECTED AREA WITH 5/8" FIRE RATED GYP WALL AFTER WORK IS COMPLETE. FINISH TO MATCH EXISTING.
- ② WORK IN SURGERY ROOMS TO BE PHASED ONE ROOM AT A TIME. COORDINATE WITH VA COR.
- ③ WORK TO BE PHASED ONE ROOM AT A TIME. COORDINATE WITH VA COR.

2ND FLOOR- EXISTING HEALTHCARE OCCUPANCY

COMPARTMENT ID	COMPARTMENT SQ. FT.	SPRINKLER SYSTEM	AREA USE	DISTANCE SMOKE	DISTANCE EXIT
2.1	8,077	FULL	HEALTHCARE	192'	132'
2.2	15,209	FULL	HEALTHCARE	180'	143'
2.3	19,992	FULL	HEALTHCARE	147'	183'
2.4	6,749	FULL	HEALTHCARE	92'	141'
2.5	22,447	FULL	HEALTHCARE	221'	78'
2.6	14,789	FULL	HEALTHCARE	174'	199'
2.7	10,096	FULL	HEALTHCARE	152'	149'
TOTAL	98,359				

2ND FLOOR- SUITE INFORMATION

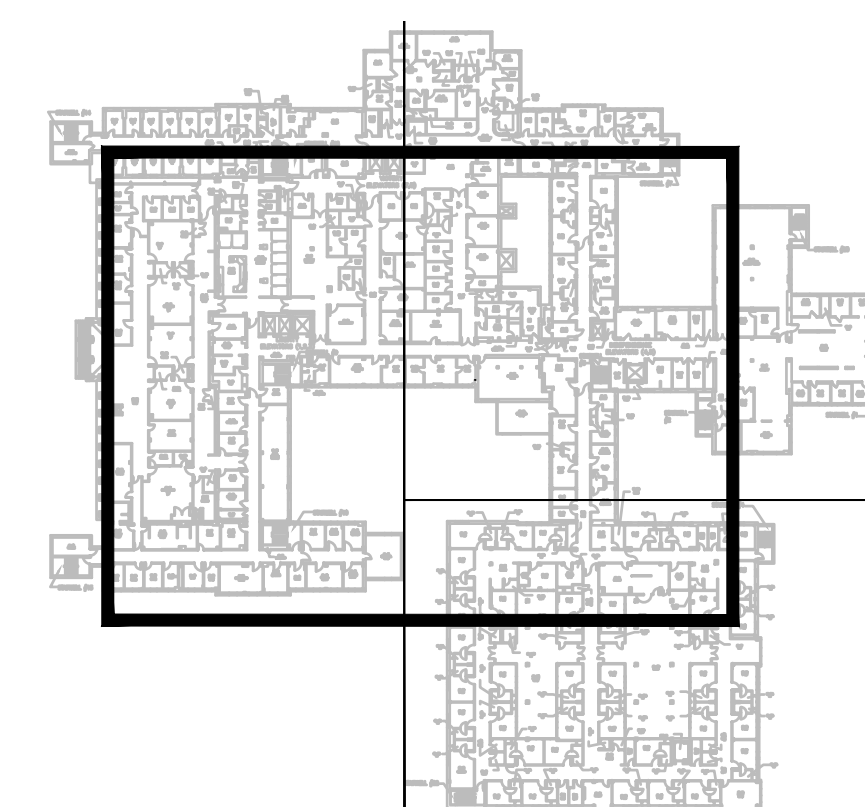
SUITE ID	SUITE ID SQ. FT.	SUITE TYPE	REMOTE EXIT REQUIREMENTS	DISTANCE TO EXIT ACCESS DOOR
S1	10,055	NON-SLEEPING	2	116'
S2	2,688	NON-SLEEPING	2	91'
S3	2,395	NON-SLEEPING	1	69'
S4	3,147	NON-SLEEPING	2	99'

HAZARDOUS AREA

ROOM ID	ROOM ID SQ. FT.
2A-25	909
2A-70	195
2A-67	56
2A-62	75
2A-29	59
2B-53	387
2B-36	193
2A-11	42
2C-14	104
2C-54	53
2C-64	143
2C-76	120
2C-96	103
2C-14	199
2C-14	123
2C-10	85
2C-20	69
2C-44	80
2C-59	81
2C-68	65
2C-66	67

LINE LEGEND

- DUST BARRIER
- 1-HR FIRE RATED WALL
- 2-HR FIRE RATED WALL
- SMOKE BARRIER
- HAZARDOUS AREA - SMOKE RESISTIVE CONST.
- NON-PATIENT/NON-SLEEPING SUITE
- NON-SLEEPING SUITE
- SLEEPING SUITE
- AREA UNDER CONSTRUCTION
- EXIT STAIRWELL
- EXTERIOR EXIT
- SUITE ID
- COMPARTMENT ID



1 SECOND FLOOR LIFE SAFETY PLAN
A-1.21 SCALE: 3/32" = 1'
PLAN NORTH TRUE NORTH

CONSULTANTS:

ARCHITECT
FOURFRONT DESIGN, INC.
517 7TH STREET
RAPID CITY, SOUTH DAKOTA 57701
PH: (605) 342-9470
FAX: (605) 342-2377
WWW.FOURFRONTDESIGN.COM

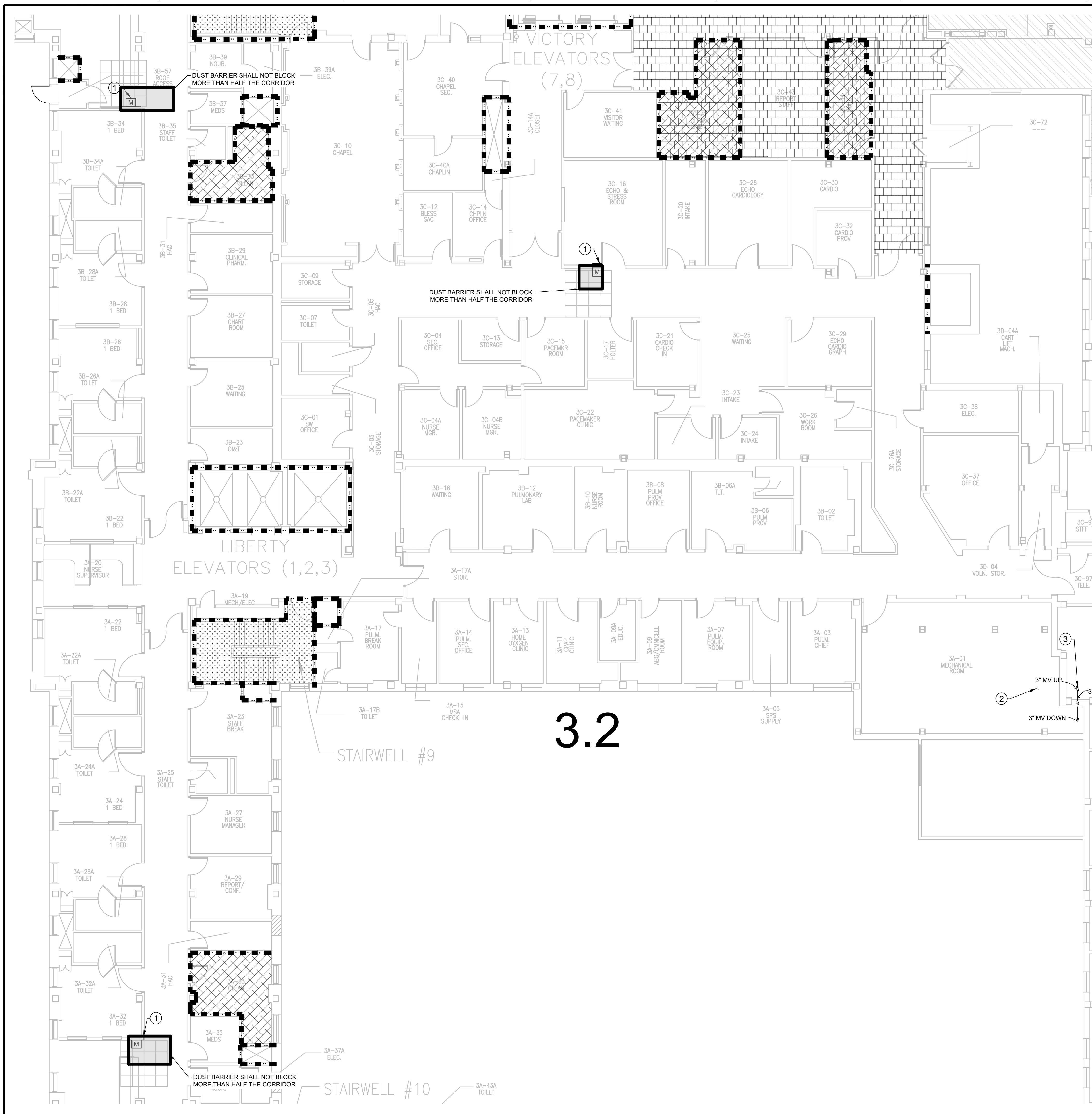
Drawing Title
SECOND FLOOR LIFE SAFETY PLAN
Approved: Project Director
 Fargo VA Health Care System

Project Title
UPGRADE MEDICAL GAS SYSTEM
Location 2101 ELM ST N, FARGO, ND 58102
Date 07/07/2021
Checked RD
Drawn BM

Project Number 437-21-160
Building Numbers 1,9,46
Drawing Number A-1.21
Dwg. 4 of 40
Office of Construction and Facilities Management
Department of Veterans Affairs

one and one half inches = one foot
three quarters inch = one foot
one half inch = one foot
three eighths inch = one foot
one quarter inch = one foot
one eighth inch = one foot

one and one half inches = one foot
 three quarters inch = one foot
 one half inch = one foot
 three eighths inch = one foot
 one quarter inch = one foot
 one eighth inch = one foot



- GENERAL NOTES:**
- THERE ARE OTHER UTILITIES, EQUIPMENT, ETC IN THIS SPACE THAT ARE NOT SHOWN FOR CLARITY. CONTRACTOR TO ACCOUNT FOR THESE ITEMS.
 - ALL MED GAS PIPING IS LOCATED IN CEILING AND WALLS. PATCH WALLS AFTER WORK IS COMPLETE.
 - PAIN TO MATCH EXISTING. COORDINATE WITH OWNER. IF COLOR CANNOT BE MATCHED, CONTRACTOR TO PAINT CORNER TO CORNER AND MAKE ACCENT WALL.
 - CONTRACTOR TO SCHEDULE WORK WITH THE VA COR.
 - MEDICAL GAS CERTIFICATIONS TO BE PERFORMED IN EACH AREA OR SYSTEM IMMEDIATELY AFTER IT IS COMPLETED.
 - ALL OLD TO NEW SWITCH OVER NEEDS TO HAPPEN IN ONE NIGHT SHUTDOWN AND CERTIFIED AT THE SAME TIME.

- KEYED ARCHITECTURAL NOTES**
- INSTALL DUST BARRIERS AROUND WORK AREA. PATCH AFFECTED AREA WITH 5/8" FIRE RATED GYP WALL AFTER WORK IS COMPLETE. FINISH TO MATCH EXISTING.
 - PATCH AND SEAL ROOF AT THE PENETRATION FOR EXISTING VACUUM PIPE.
 - COREDRILL AT THE SHOWN LOCATION FOR NEW VACUUM PIPE.

3RD FLOOR- EXISTING HEALTHCARE OCCUPANCY

COMPARTMENT ID	COMPARTMENT SQ.FT.	SPRINKLER SYSTEM	AREA USE	DISTANCE SMOKE	DISTANCE EXIT
3.1	9,975	FULL	HEALTHCARE	181'	58'
3.2	13,571	FULL	HEALTHCARE	141'	156'
3.3	8,135	FULL	HEALTHCARE	164'	127'
3.4	6,481	FULL	HEALTHCARE	93'	136'
3.5	21,377	FULL	HEALTHCARE	192'	250'
3.6	7,234	FULL	HEALTHCARE	124'	129'
TOTAL	66,873				

3RD FLOOR- SUITE INFORMATION

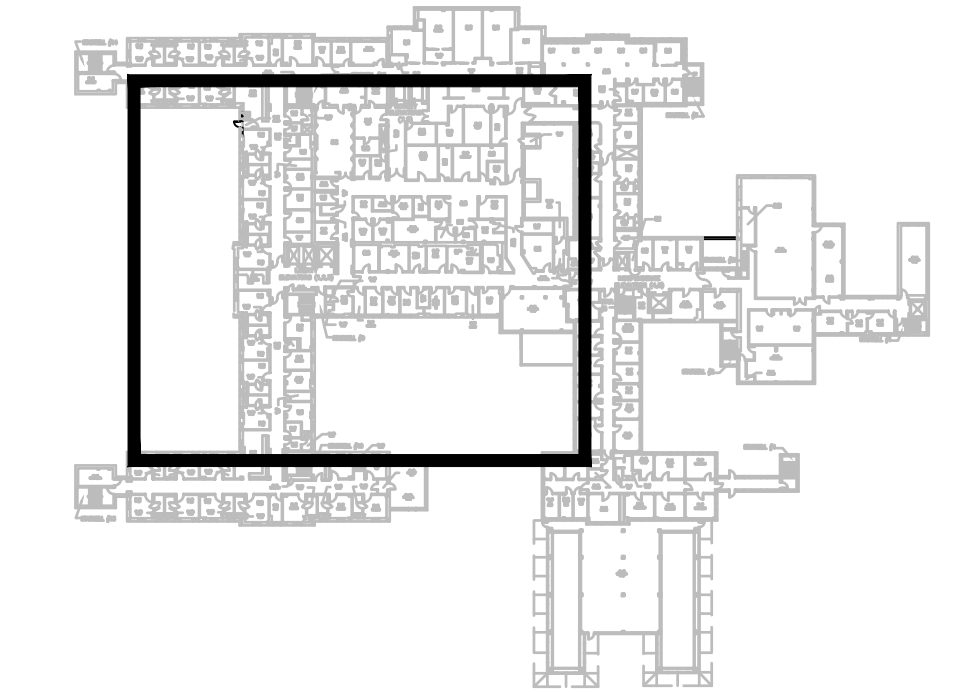
SUITE ID	SUITE ID SQ. FT.	SUITE TYPE	REMOTE EXIT REQUIREMENTS	DISTANCE TO EXIT ACCESS DOOR
3.1	9,975	SLEEPING	2	88'
3.2	13,571	NON-SLEEPING	2	84'
3.3	8,135	NON-SLEEPING	2	92'

HAZARDOUS AREA

ROOM ID	ROOM ID SQ. FT.
3A-28	170
3A-29	93
3A-30	178
3B-30	129
3B-31	174
3B-32	92
3C-42	224
3C-43	149
3C-44	117
3C-45	124
3C-46	148

LINE LEGEND

- DUST BARRIER
- 1-HR FIRE RATED WALL
- 2-HR FIRE RATED WALL
- SMOKE BARRIER
- HAZARDOUS AREA - SMOKE RESISTIVE CONST.
- NON-PATIENT/NON-SLEEPING SUITE
- NON-SLEEPING SUITE
- SLEEPING SUITE
- AREA UNDER CONSTRUCTION
- EXIT STAIRWELL
- EXTERIOR EXIT
- SUITE ID
- COMPARTMENT ID



1 THIRD FLOOR LIFE SAFETY PLAN
 SCALE 1/8" = 1'-0"

N PLAN NORTH
 N TRUE NORTH

Revisions:

Revisions:	Date

CONSULTANTS:

ARCHITECT

FOURFRONT DESIGN INC.
 517 7TH STREET
 RAPID CITY, SOUTH DAKOTA 57701
 PH: (605) 342-9470
 FAX: (605) 342-2377
 WWW.FOURFRONTDESIGN.COM

Drawing Title

THIRD FLOOR LIFE SAFETY PLAN

Approved: Project Director
 Fargo VA Health Care System

Project Title

UPGRADE MEDICAL GAS SYSTEM

Location 2101 ELM ST N, FARGO, ND 58102

Date 07/07/2021

Checked RD

Drawn BM

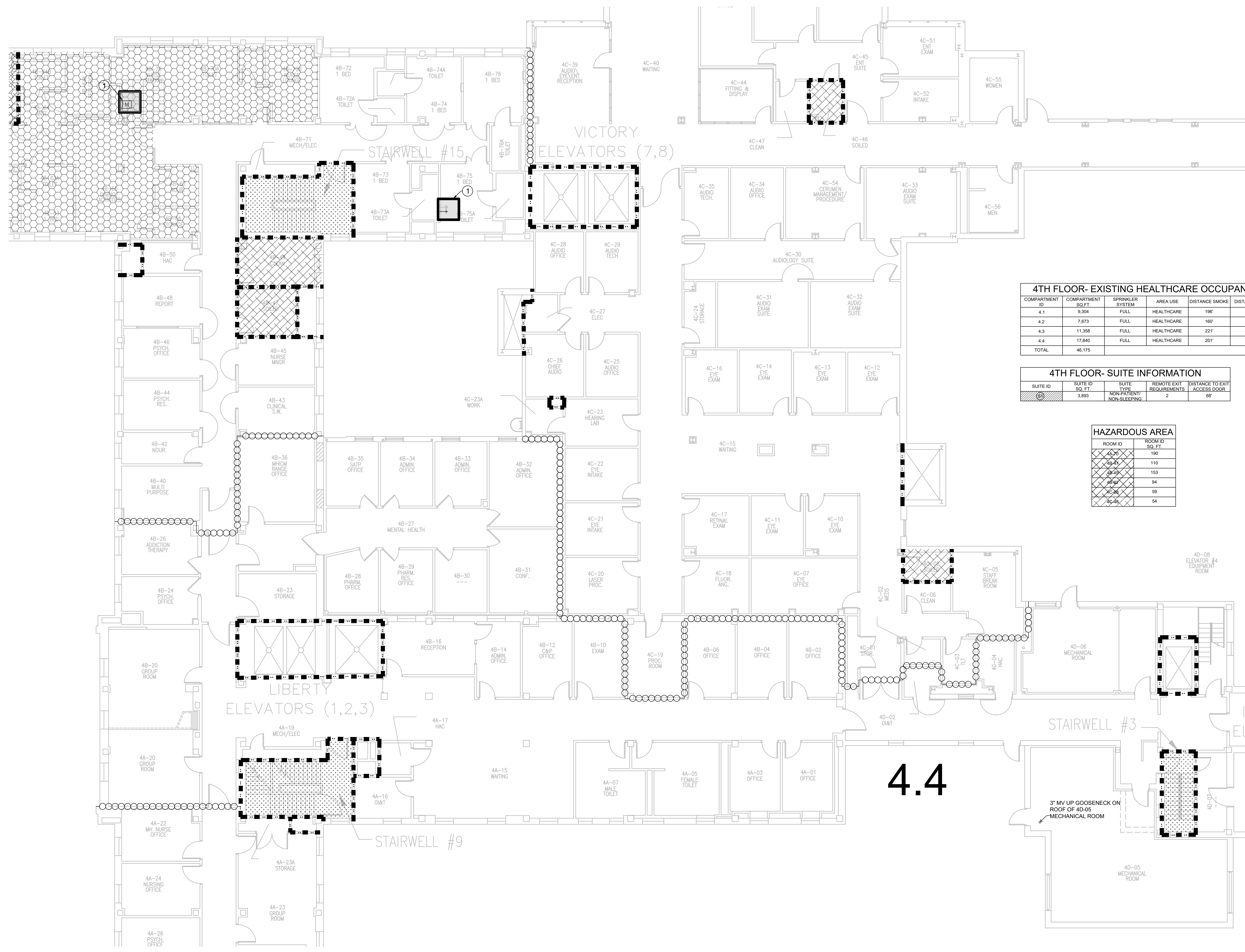
Project Number 437-21-160
 Building Numbers 1,9,46
 Drawing Number A-1.31
 Dwg. 5 of 40

Office of Construction and Facilities Management

Department of Veterans Affairs

100% CONSTRUCTION DOCUMENTS

one eighth inch = one foot
 one quarter inch = one foot
 one half inch = one foot
 three eighths inch = one foot
 one inch = one foot
 one and one half inches = one foot
 two inches = one foot
 three quarters inch = one foot
 one inch = one foot
 one and one half inches = one foot



- GENERAL NOTES:
- THERE ARE OTHER UTILITIES, EQUIPMENT, ETC IN THIS SPACE THAT ARE NOT SHOWN FOR CLARITY. CONTRACTOR TO ACCOUNT FOR THESE ITEMS.
 - ALL MED GAS PIPING IS LOCATED IN CEILINGS AND WALLS. PATCH WALLS AFTER WORK IS COMPLETE. PAINT TO MATCH EXISTING, COORDINATE WITH OWNER. IF COLOR CANNOT BE MATCHED, CONTRACTOR TO PAINT CORNER TO CORNER AND MAKE ACCENT WALL.
 - CONTRACTOR TO SCHEDULE WORK WITH THE VA COR. MEDICAL GAS CERTIFICATIONS TO BE PERFORMED IN EACH AREA OR SYSTEM IMMEDIATELY AFTER IT IS COMPLETED.
 - ALL OLD TO NEW SWITCH OVER NEEDS TO HAPPEN IN ONE NIGHT SHUTDOWN AND CERTIFIED AT THE SAME TIME.

KEYED ARCHITECTURAL NOTES

① INSTALL DUST BARRIERS AROUND WORK AREA. PATCH AFFECTED AREA WITH 5/8" FIRE RATED GYP WALL AFTER WORK IS COMPLETE. FINISH TO MATCH EXISTING.

4TH FLOOR- EXISTING HEALTHCARE OCCUPANCY

COMPARTMENT ID	COMPARTMENT SQ.FT.	SPRINKLER SYSTEM	AREA USE	DISTANCE SMOKE	DISTANCE EXIT
4.1	9,394	FULL	HEALTHCARE	190'	82'
4.2	7,873	FULL	HEALTHCARE	160'	152'
4.3	11,358	FULL	HEALTHCARE	221'	190'
4.4	17,840	FULL	HEALTHCARE	201'	100'
TOTAL	46,175				

4TH FLOOR- SUITE INFORMATION

SUITE ID	SUITE SQ. FT.	SUITE TYPE	REMOTE EXIT REQUIREMENTS	DISTANCE TO EXIT
⑧	3,893	NON-PATIENT/ NON-SLEEPING	2	68'

HAZARDOUS AREA

ROOM ID	ROOM SQ. FT.
4C-7	190
4B-5	110
4B-6	153
4B-7	94
4C-8	59
4C-9	54

LINE LEGEND

- DUST BARRIER
- 1-HR FIRE RATED WALL
- 2-HR FIRE RATED WALL
- SMOKE BARRIER
- HAZARDOUS AREA - SMOKE RESISTIVE CONST.
- NON-PATIENT/NON-SLEEPING SUITE
- NON-SLEEPING SUITE
- SLEEPING SUITE
- AREA UNDER CONSTRUCTION
- EXIT STAIRWELL
- EXTERIOR EXIT
- SUITE ID
- COMPARTMENT ID

1 FOURTH FLOOR LIFE SAFETY PLAN
 SCALE 1/8" = 1'-0"

PLAN NORTH
 TRUE NORTH

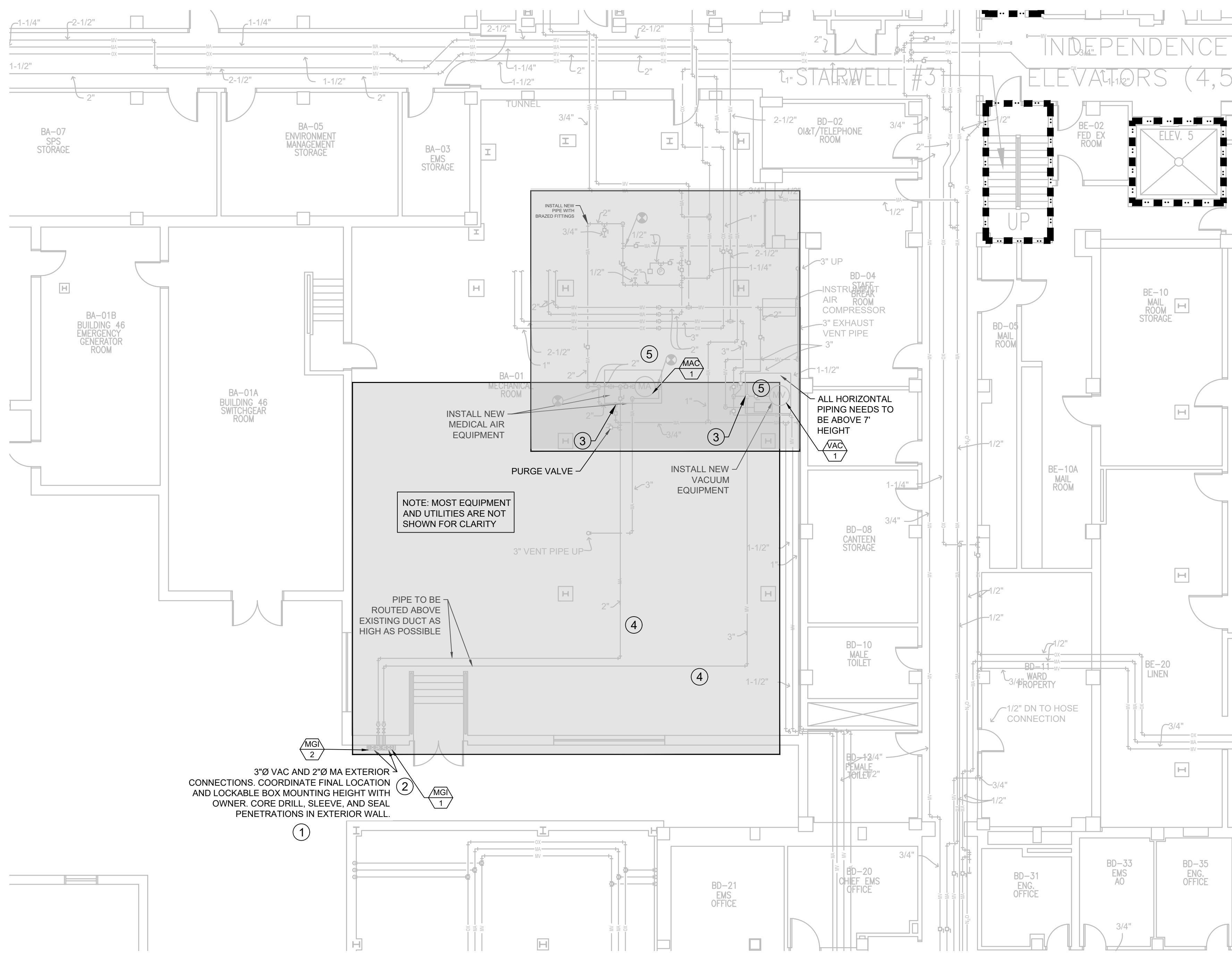
100% CONSTRUCTION DOCUMENTS

CONSULTANTS: Revisions: _____ Date _____	ARCHITECT FOURFRONT DESIGN, INC. 517 7TH STREET RAPID CITY, SOUTH DAKOTA 57701 PH: (605) 342-9470 FAX: (605) 342-2377 WWW.FOURFRONTDESIGN.COM	Drawing Title FOURTH FLOOR LIFE SAFETY PLAN	Project Title UPGRADE MEDICAL GAS SYSTEM	Project Number 437-21-160	Office of Construction and Facilities Management
		Approved: Project Director Fargo VA Health Care System	Location 2101 ELM ST N, FARGO, ND 58102	Building Numbers 1,9,46	

Dwg. 6 of 40

GENERAL NOTES:

1. THERE ARE OTHER UTILITIES, EQUIPMENT, ETC IN THIS SPACE THAT ARE NOT SHOWN FOR CLARITY. CONTRACTOR TO ACCOUNT FOR THESE ITEMS.
2. ALL MED GAS PIPING IS LOCATED IN CEILING AND WALLS. PATCH WALLS AFTER WORK IS COMPLETE.
3. PAINT TO MATCH EXISTING, COORDINATE WITH OWNER. IF COLOR CANNOT BE MATCHED, CONTRACTOR TO PAINT CORNER TO CORNER AND MAKE ACCENT WALL.
4. CONTRACTOR TO SCHEDULE WORK WITH THE VA COR.
5. MEDICAL GAS CERTIFICATIONS TO BE PERFORMED IN EACH AREA OR SYSTEM IMMEDIATELY AFTER IT IS COMPLETED.
6. ALL OLD TO NEW SWITCH OVER NEEDS TO HAPPEN IN ONE NIGHT SHUTDOWN AND CERTIFIED AT THE SAME TIME.
7. CONTRACTOR SHALL BE RESPONSIBLE TO RELOCATE OR PUT IN NEW SPRINKLER LINES AND HEADS AFFECTED BY OR DUE TO THE DEMOLITION WORK OR NEW EQUIPMENT INSTALLATION.

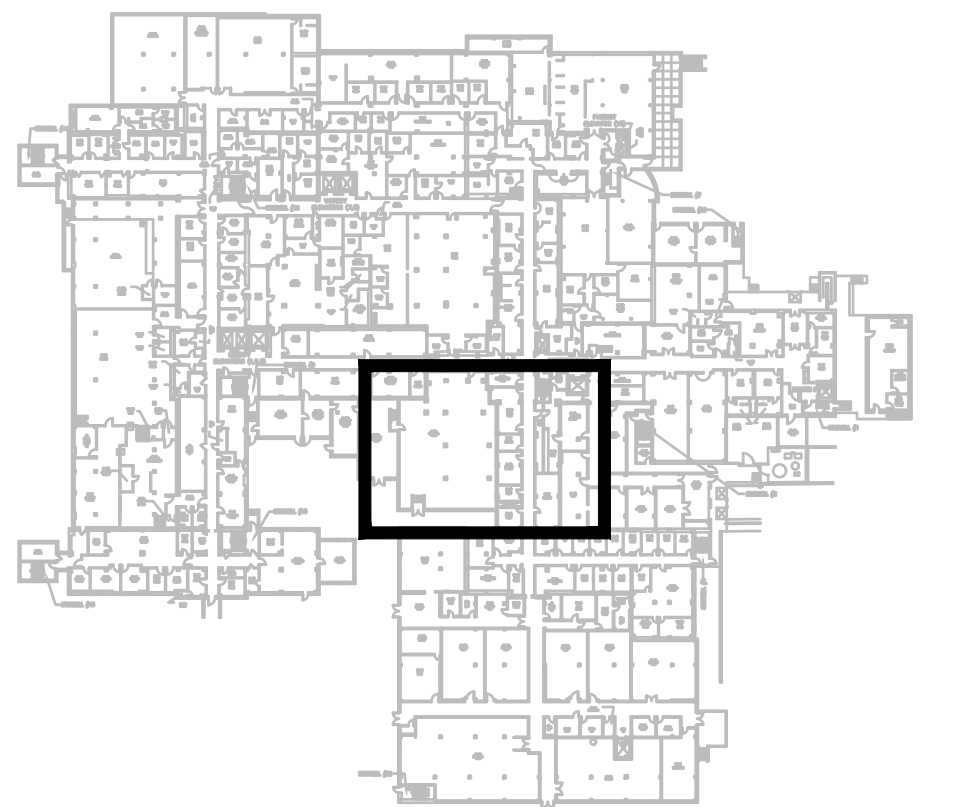


KEYED PHASING PLAN NOTES

- ① CONTRACTOR SHALL VERIFY THE EQUIPMENT THEY INTEND TO SUPPLY FITS WITHIN THE SPACE INDICATED ON THE CONTRACT DOCUMENTS. ANY MODIFICATIONS OR RELOCATIONS OF EQUIPMENT OR UTILITIES SHALL BE THE CONTRACTOR'S RESPONSIBILITY WITH NO EXTRA COST TO THE VA. CONTRACTOR TO OBTAIN VA'S APPROVAL PRIOR TO ANY EQUIPMENT OR UTILITY RELOCATION.
- ② INSTALL NEW ELECTRICAL CONNECTIONS AND PIPING FROM MA AND VAC MAIN TO THE EXTERIOR TEMP./ EMERGENCY CONNECTION POINT FOR MA AND VAC. PIPING TO BE ROUTED ABOVE EXISTING DUCTS AND UTILITIES AS HIGH AS POSSIBLE. INSTALL LOCK BOXES, AND CROSSOVER VALVES TO THE EQUIPMENT LOCATION. CONTRACTOR TO CERTIFY NEW PIPE SECTIONS. CONTRACTOR TO PROVIDE, TEST, AND CERTIFY TEMPORARY MA AND VAC EQUIPMENT SKIDS.
- ③ BYPASS PIPING AND VALVES TO BE INSTALLED SO WHEN EXISTING EQUIPMENT IS REMOVED AND REPLACED WITH NEW EQUIPMENT, LOSS OF SERVICE IS MINIMIZED, TEMPORARY MA AND MV SKIDS SHALL OPERATE, AND SWITCH IS PERFORMED WITHIN SHORT TIME.
- ④ SHUTDOWN EXISTING MA AND VAC EQUIPMENT. TIE NEW CONNECTIONS INTO EXISTING MA AND VAC MAINS BYPASS WITH TEMPORARY VAC AND MA EQUIPMENT NOW SERVING THE BUILDING.
- ⑤ RUN AND CERTIFY NEW MA AND MV EQUIPMENT AND LINES PRIOR TO SWITCH OVER TO FULL OPERATIONAL TESTS. ONCE COMPLETED AND APPROVED, SWITCH OVER SHALL BE SCHEDULED AND WHEN COMPLETE AND APPROVED, THE TEMPORARY EXTERIOR AND MA AND MV SKIDS MAY BE DISCONNECTED AND REMOVED FROM SITE.

LINE LEGEND

- EXISTING
- - - DEMO
- NEW CONSTRUCTION
- [M] ALARM PANEL
- [Z] ZONE VALVES
- [S] SENSORS
- (●) CONNECT POINT
- (◇) DISCONNECT POINT
- DUST BARRIER
- - - 1-HR FIRE RATED WALL
- . - . 2-HR FIRE RATED WALL
- o - o - o SMOKE BARRIER



1 BASEMENT - PHASING PLAN
A-2.01
SCALE: 1/8" = 1'-0"

N PLAN NORTH
N TRUE NORTH

100% CONSTRUCTION DOCUMENTS

Revisions: _____ _____ _____	CONSULTANTS:	 ARCHITECT  FOURFRONT DESIGN, INC. 517 7TH STREET RAPID CITY, SOUTH DAKOTA 57701 PH: (605) 342-9470 FAX: (605) 342-2377 WWW.FOURFRONTDESIGN.COM	Drawing Title BASEMENT - PHASING PLAN	Project Title UPGRADE MEDICAL GAS SYSTEM	Project Number 437-21-160 Building Numbers 1,946 Drawing Number A-2.01 Dwg. 7 of 40	Office of Construction and Facilities Management  Department of Veterans Affairs			
			Approved: Project Director Fargo VA Health Care System	Location 2101 ELM ST N, FARGO, ND 58102	Date 07/07/2021		Checked RD	Drawn BM	

GENERAL NOTES:

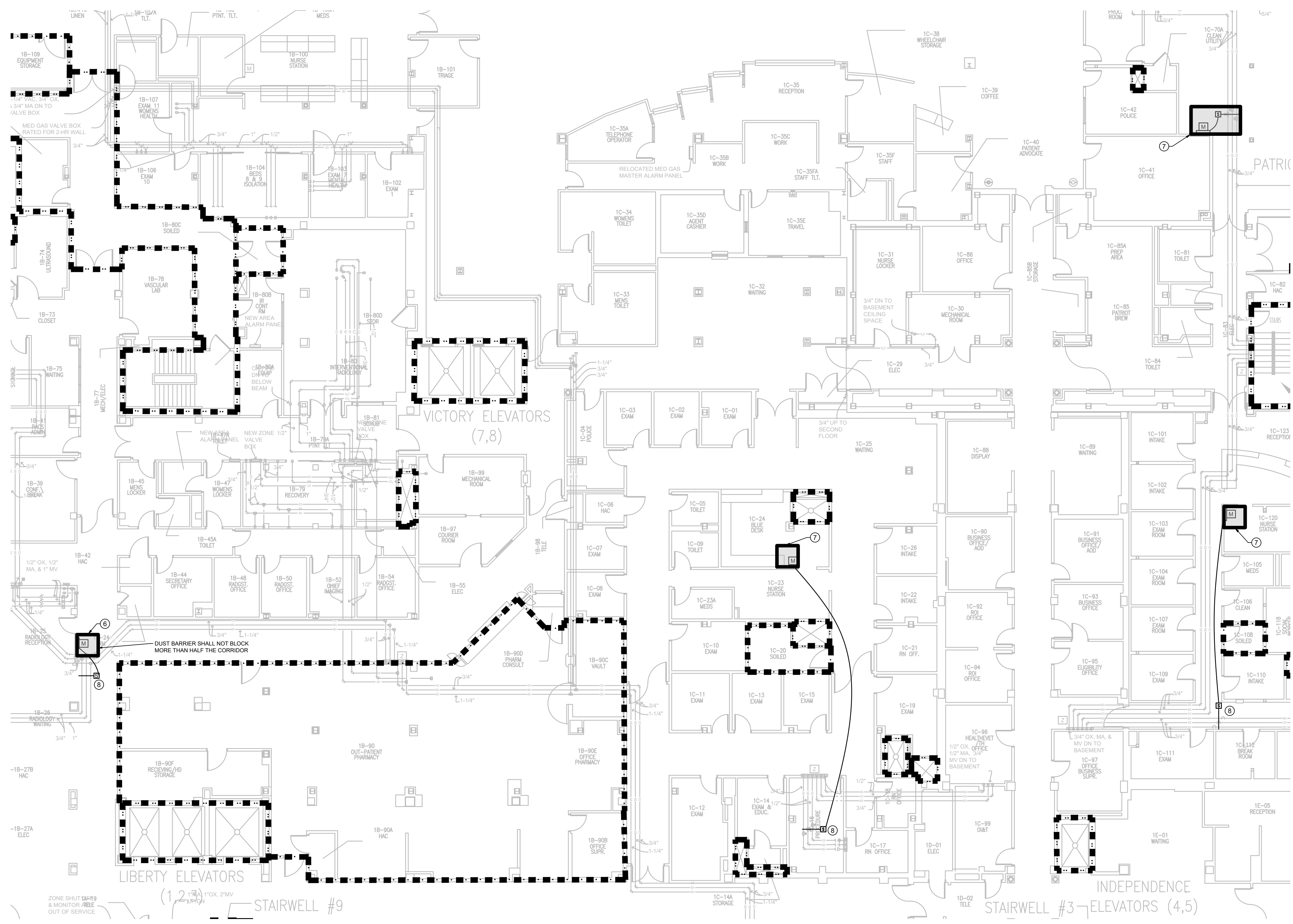
1. THERE ARE OTHER UTILITIES, EQUIPMENT, ETC. IN THIS SPACE THAT ARE NOT SHOWN FOR CLARITY. CONTRACTOR TO ACCOUNT FOR THESE ITEMS.
2. ALL MED GAS PIPING IS LOCATED IN CEILINGS AND WALLS. PATCH WALLS AFTER WORK IS COMPLETE.
3. PAINT TO MATCH EXISTING, COORDINATE WITH OWNER. IF COLOR CANNOT BE MATCHED, CONTRACTOR TO PAINT CORNER TO CORNER AND MAKE ACCENT WALL.
4. CONTRACTOR TO SCHEDULE WORK WITH THE VA COR.
5. MEDICAL GAS CERTIFICATIONS TO BE PERFORMED IN EACH AREA OR SYSTEM IMMEDIATELY AFTER IT IS COMPLETED.
6. ALL OLD TO NEW SWITCH OVER NEEDS TO HAPPEN IN ONE NIGHT SHUTDOWN AND CERTIFIED AT THE SAME TIME.

KEYED PHASING PLAN NOTES

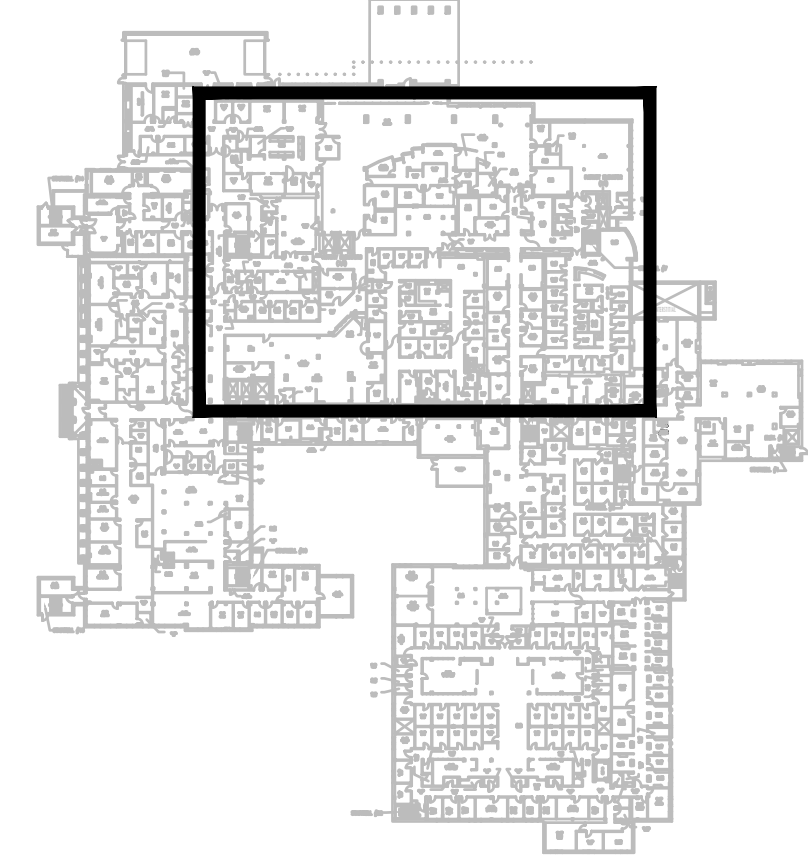
- ⑥ INSTALL DUST BARRIERS AROUND WORK AREA. SHUTDOWN ZONE WITH EXISTING ZONE VALVES. REMOVE EXISTING ZONE ALARM PANEL AND INSTALL NEW ZONE ALARM PANEL IN THE SAME LOCATION. INSTALL NEW PRESSURE SENSORS IN EXISTING PIPING AND CONNECT TO NEW ZONE ALARM PANEL.
- ⑦ INSTALL DUST BARRIERS AROUND WORK AREA. SHUTDOWN ZONE WITH EXISTING ZONE VALVES. REMOVE EXISTING ZONE ALARM PANEL AND INSTALL NEW ZONE ALARM PANEL IN THE SAME LOCATION. REMOVE ALL THE PIPING FROM THE EXISTING ZONE ALARM PANEL TO THE MEDICAL GAS SUPPLY LINES. INSTALL NEW PRESSURE SENSORS IN EXISTING PIPING AND CONNECT TO NEW ZONE ALARM PANEL.
- ⑧ EXTEND DUST BARRIER TO THIS WORK SPACE, OR ALTERNATIVELY USE HEPA CART FOR CEILING WORK.

LINE LEGEND

	EXISTING
	DEMO
	NEW CONSTRUCTION
	ALARM PANEL
	ZONE VALVES
	SENSORS
	CONNECT POINT
	DISCONNECT POINT
	DUST BARRIER
	1-HR FIRE RATED WALL
	2-HR FIRE RATED WALL
	SMOKE BARRIER



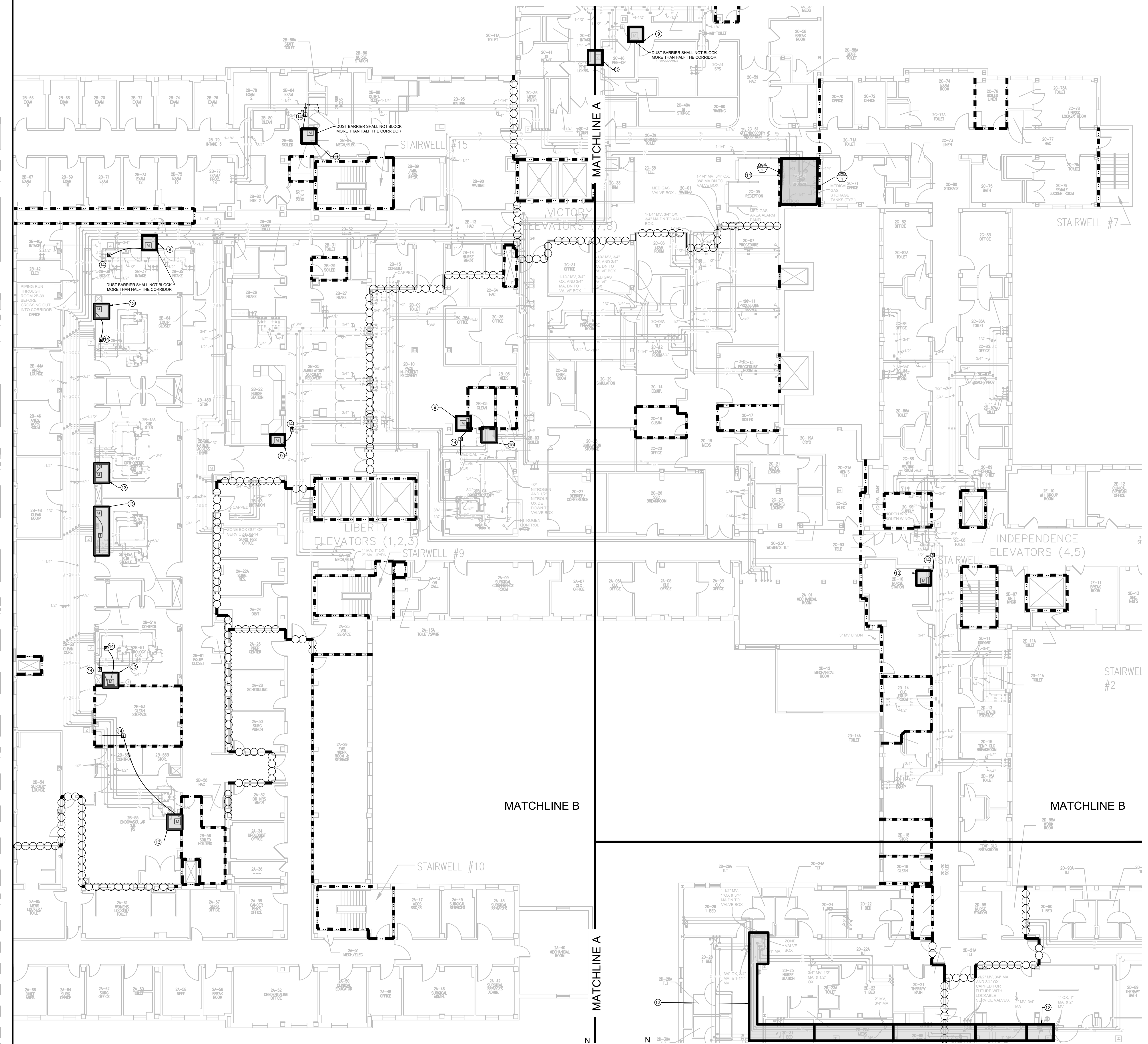
1 FIRST FLOOR - PHASING PLAN
SCALE: 3/32" = 1'
PLAN NORTH TRUE NORTH



100% CONSTRUCTION DOCUMENTS

CONSULTANTS: _____ _____ _____ _____ _____ _____ _____ _____ _____	ARCHITECT FOURFRONT DESIGN INC. 517 7TH STREET RAPID CITY, SOUTH DAKOTA 57701 PH: (605) 342-9470 FAX: (605) 342-2377 WWW.FOURFRONTDESIGN.COM	Drawing Title FIRST FLOOR - PHASING PLAN	Project Title UPGRADE MEDICAL GAS SYSTEM	Project Number 437-21-160 Building Numbers 1,9,46	Office of Construction and Facilities Management
		Approved: Project Director Fargo VA Health Care System	Location 2101 ELM ST N, FARGO, ND 58102	Drawing Number A-2.11 Dwg. 8 of 40	
Revisions: _____ _____ _____ _____ _____ _____ _____ _____	Date _____	Date 07/07/2021	Checked RD	Drawn BM	Department of Veterans Affairs

one and one half inches = one foot
 three quarters inch = one foot
 one half inch = one foot
 three eighths inch = one foot
 one quarter inch = one foot
 one eighth inch = one foot



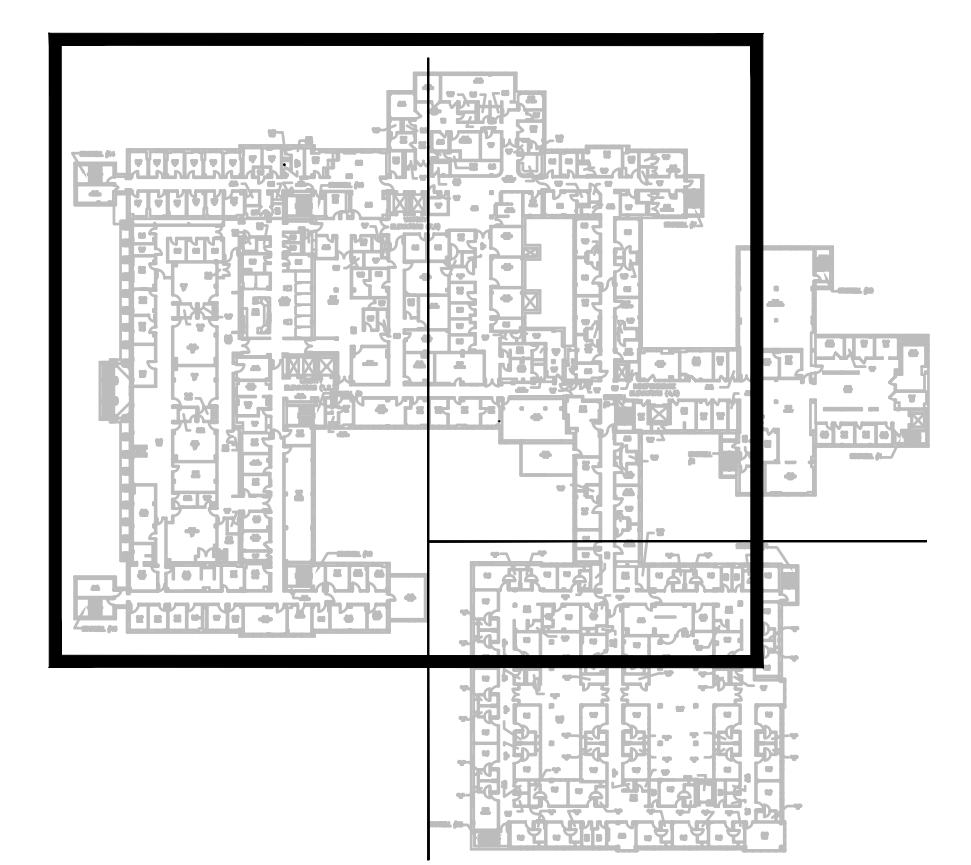
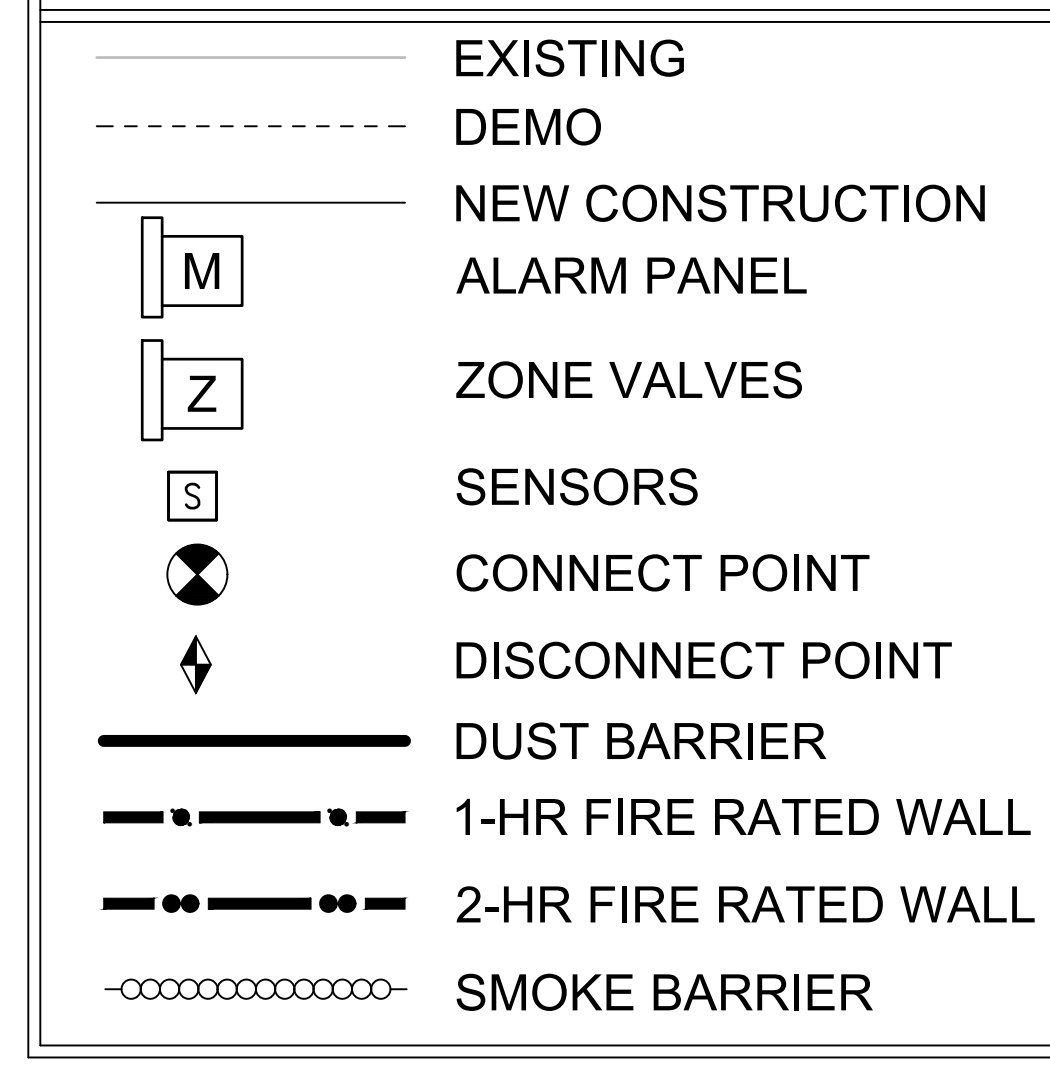
GENERAL NOTES:

1. THERE ARE OTHER UTILITIES, EQUIPMENT, ETC. IN THIS SPACE THAT ARE NOT SHOWN FOR CLARITY. CONTRACTOR TO ACCOUNT FOR THESE ITEMS.
2. ALL MED GAS PIPING IS LOCATED IN CEILINGS AND WALLS. PATCH WALLS AFTER WORK IS COMPLETE.
3. PAINT TO MATCH EXISTING, COORDINATE WITH OWNER. IF COLOR CANNOT BE MATCHED, CONTRACTOR TO PAINT CORNER TO CORNER AND MAKE ACCENT WALL.
4. CONTRACTOR TO SCHEDULE WORK WITH THE VA COR.
5. MEDICAL GAS CERTIFICATIONS TO BE PERFORMED IN EACH AREA OR SYSTEM IMMEDIATELY AFTER IT IS COMPLETED.
6. ALL OLD TO NEW SWITCH OVER NEEDS TO HAPPEN IN ONE NIGHT SHUTDOWN AND CERTIFIED AT THE SAME TIME.

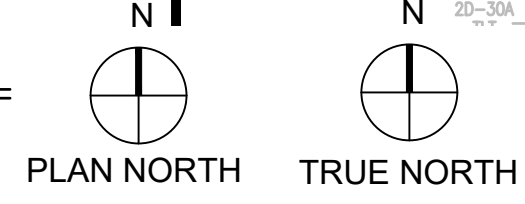
KEYED PHASING PLAN NOTES

9. INSTALL DUST BARRIERS AROUND WORK AREA. SHUTDOWN ZONE WITH EXISTING ZONE VALVES. REMOVE EXISTING ZONE ALARM PANEL AND INSTALL NEW ZONE ALARM PANEL IN THE SAME LOCATION. REMOVE ALL THE PIPING FROM THE EXISTING ZONE ALARM PANEL TO THE MEDICAL GAS SUPPLY LINES. INSTALL NEW PRESSURE SENSORS IN EXISTING PIPING AND CONNECT TO NEW ZONE ALARM PANEL.
10. INSTALL DUST BARRIERS AROUND WORK AREA. SHUTDOWN ZONE WITH EXISTING ZONE VALVES. REMOVE EXISTING ZONE ALARM PANEL AND PRESSURE SENSORS. INSTALL NEW ZONE ALARM PANEL IN THE SAME LOCATION. INSTALL NEW PRESSURE SENSORS IN EXISTING PIPING AND CONNECT TO NEW ZONE ALARM PANEL.
11. REPLACE EXISTING NITROGEN AND NITROUS MANIFOLDS WITH NEW MANIFOLDS.
12. INSTALL AND CERTIFY NEW MEDICAL AIR PIPE AND ACCESSORIES. EXISTING PIPING CANNOT BE REMOVED UNTIL NEW PIPING IS INSTALLED, CERTIFIED, OPERATIONAL AND APPROVED. WORK TO BE PERFORMED IN ONE SEGMENT AT A TIME. BARRIERS SHALL NOT BE LEFT UP WHERE NO WORK IS TAKING PLACE. CORRIDORS SHALL NOT BE COMPLETELY BLOCKED. COORDINATE WITH VA TO WORK AT THE CORRIDOR LEAVING AT LEAST HALF THE CORRIDOR OPEN. SWITCH FROM OLD TO NEW SHALL BE IN ONE SHUTDOWN WHEN/ AS VA IS ABLE TO SHUTDOWN.
13. CONTRACTOR TO COORDINATE WITH VA TO WORK IN SURGERY AREAS AFTER SURGERY AREA HOURS. CONTRACTOR TO WORK ON SURGERY ROOMS ONE ROOM AT A TIME. MAINTAIN THE ROOM AT A NEGATIVE PRESSURE. INSTALL DUST BARRIERS AROUND WORK AREA. SHUTDOWN ZONE WITH EXISTING ZONE VALVES. REMOVE EXISTING ZONE ALARM PANEL AND INSTALL NEW ZONE ALARM PANEL IN THE SAME LOCATION. INSTALL NEW PRESSURE SENSORS IN EXISTING PIPING AND CONNECT TO NEW ZONE ALARM PANEL.
14. EXTEND DUST BARRIER TO THIS WORK SPACE, OR ALTERNATIVELY USE HEPA CART FOR CEILING WORK.
15. INSTALL DUST BARRIERS AROUND WORK AREA. SHUTDOWN ZONE WITH EXISTING ZONE VALVES. INSTALL NEW PRESSURE GAUGES DOWNSTREAM OF VALVES ON ALL LINES IN THE ZONE VALVE BOX.

LINE LEGEND



1 SECOND FLOOR - PHASING PLAN
 A-2.21 SCALE: 3/32" = 1'



Revisions:	Date:

CONSULTANTS:

ARCHITECT

FOURFRONT DESIGN, INC.
 517 7TH STREET
 RAPID CITY, SOUTH DAKOTA 57701
 PH: (605) 342-9470
 FAX: (605) 342-2377
 WWW.FOURFRONTDESIGN.COM

Drawing Title
 SECOND FLOOR - PHASING PLAN

Approved: Project Director
 Fargo VA Health Care System

Project Title
 UPGRADE MEDICAL GAS SYSTEM

Location
 2101 ELM ST N, FARGO, ND 58102

Date
 07/07/2021

Checked
 RD

Drawn
 BM

Project Number
 437-21-160

Building Numbers
 1,9,46

Drawing Number
 A-2.21

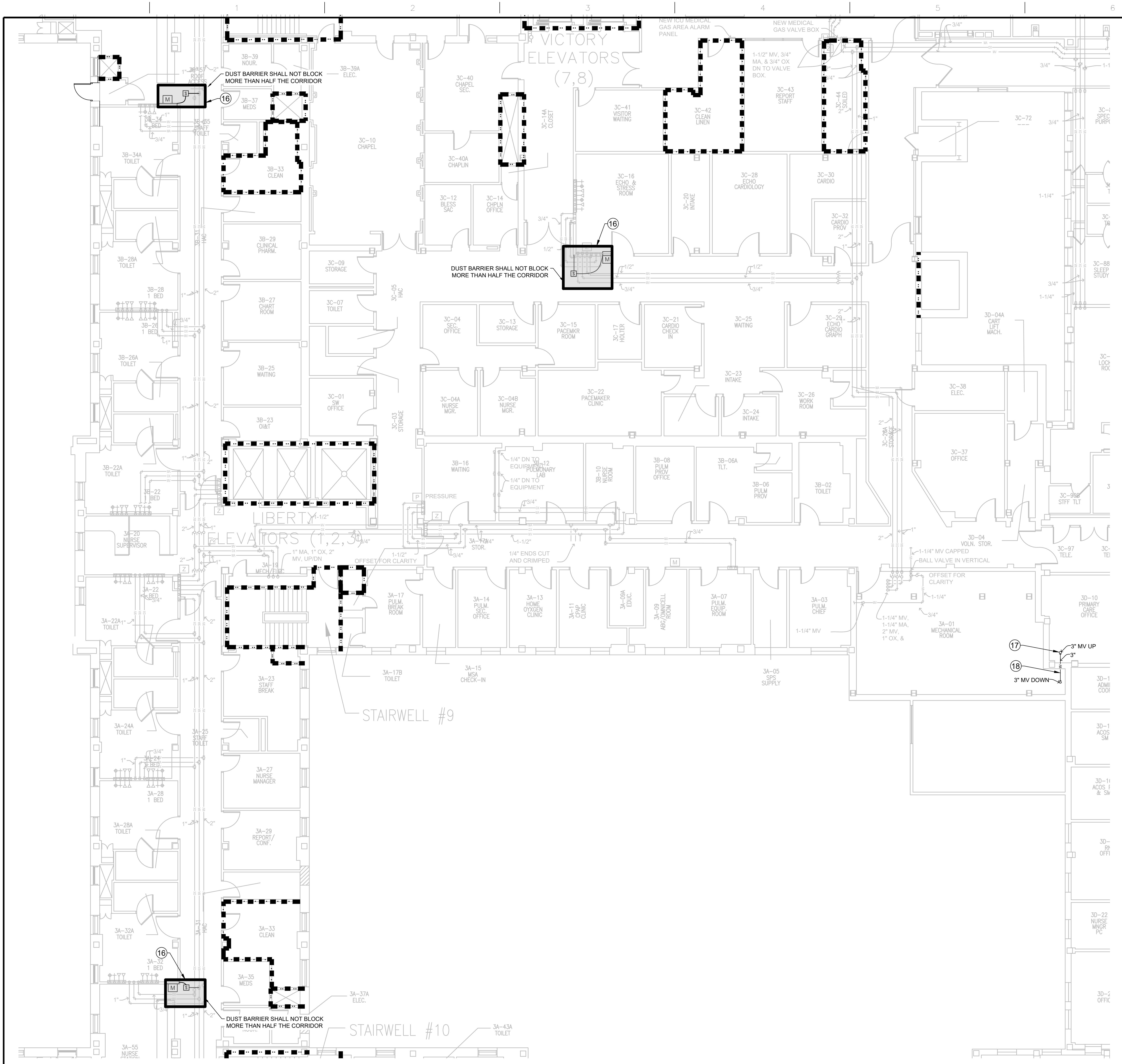
Dwg. 9 of 40

Office of Construction and Facilities Management

Department of Veterans Affairs

100% CONSTRUCTION DOCUMENTS

one and one half inches = one foot
 three quarters inch = one foot
 one quarter inch = one foot
 one eighth inch = one foot



GENERAL NOTES:

1. THERE ARE OTHER UTILITIES, EQUIPMENT, ETC IN THIS SPACE THAT ARE NOT SHOWN FOR CLARITY. CONTRACTOR TO ACCOUNT FOR THESE ITEMS.
2. ALL MED GAS PIPING IS LOCATED IN CEILINGS AND WALLS. PATCH WALLS AFTER WORK IS COMPLETE.
3. PAINT TO MATCH EXISTING, COORDINATE WITH OWNER. IF COLOR CANNOT BE MATCHED, CONTRACTOR TO PAINT CORNER TO CORNER AND MAKE ACCENT WALL.
4. CONTRACTOR TO SCHEDULE WORK WITH THE VA COR.
5. MEDICAL GAS CERTIFICATIONS TO BE PERFORMED IN EACH AREA OR SYSTEM IMMEDIATELY AFTER IT IS COMPLETED.
6. ALL OLD TO NEW SWITCH OVER NEEDS TO HAPPEN IN ONE NIGHT SHUTDOWN AND CERTIFIED AT THE SAME TIME.

KEYED PHASING PLAN NOTES

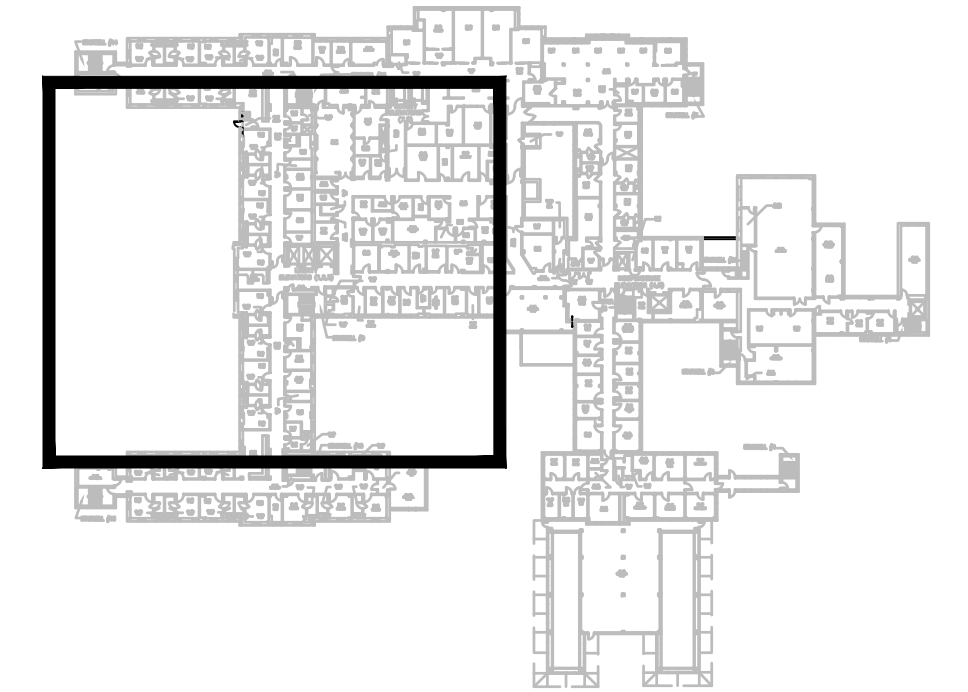
16 INSTALL DUST BARRIERS AROUND WORK AREA. SHUTDOWN ZONE WITH EXISTING ZONE VALVES. REMOVE EXISTING ZONE ALARM PANEL AND INSTALL NEW ZONE ALARM PANEL IN THE SAME LOCATION. REMOVE ALL THE PIPING FROM THE EXISTING ZONE ALARM PANEL TO THE MEDICAL GAS SUPPLY LINES. INSTALL NEW PRESSURE SENSORS IN EXISTING PIPING AND CONNECT TO NEW ZONE ALARM PANEL.

17 COREDRILL FOR 3" MEDICAL VACUUM PIPE

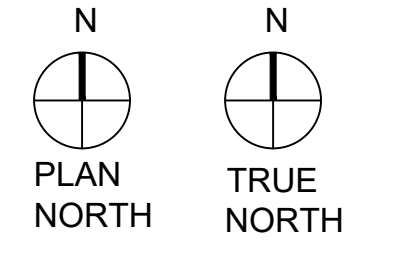
18 INSTALL NEW VACUUM EXHAUST PIPING AS SHOWN. TO BE COMPLETED AT THE SAME TIME AS EQUIPMENT REPLACEMENT SO IT CAN COMPLETED WITHIN ONE SHUTDOWN. NEW PIPING SHALL BE OPERATIONAL BEFORE REMOVING EXISTING EXHAUST PIPING.

LINE LEGEND

- EXISTING
- - - DEMO
- NEW CONSTRUCTION
- [M] ALARM PANEL
- [Z] ZONE VALVES
- [S] SENSORS
- ⊙ CONNECT POINT
- ⊙ DISCONNECT POINT
- DUST BARRIER
- - - 1-HR FIRE RATED WALL
- - - 2-HR FIRE RATED WALL
- SMOKE BARRIER

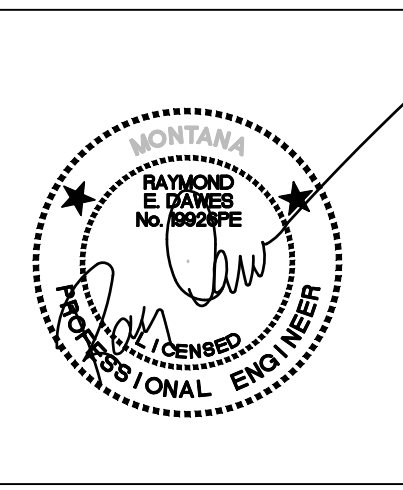


1 THIRD FLOOR - PHASING PLAN
 A-2.31 SCALE 1/8" = 1'-0"



Revisions:	Date

CONSULTANTS:



ARCHITECT

FOURFRONT DESIGN, INC.
 517 7TH STREET
 RAPID CITY, SOUTH DAKOTA 57701
 PH: (605) 342-9470
 FAX: (605) 342-2377
 WWW.FOURFRONTDESIGN.COM

Drawing Title
THIRD FLOOR - PHASING PLAN

Approved: Project Director
Fargo VA Health Care System

Project Title
UPGRADE MEDICAL GAS SYSTEM

Location 2101 ELM ST N, FARGO, ND 58102

Date 07/07/2021

Checked RD

Drawn BM

Project Number
437-21-160

Building Numbers
1,9,46

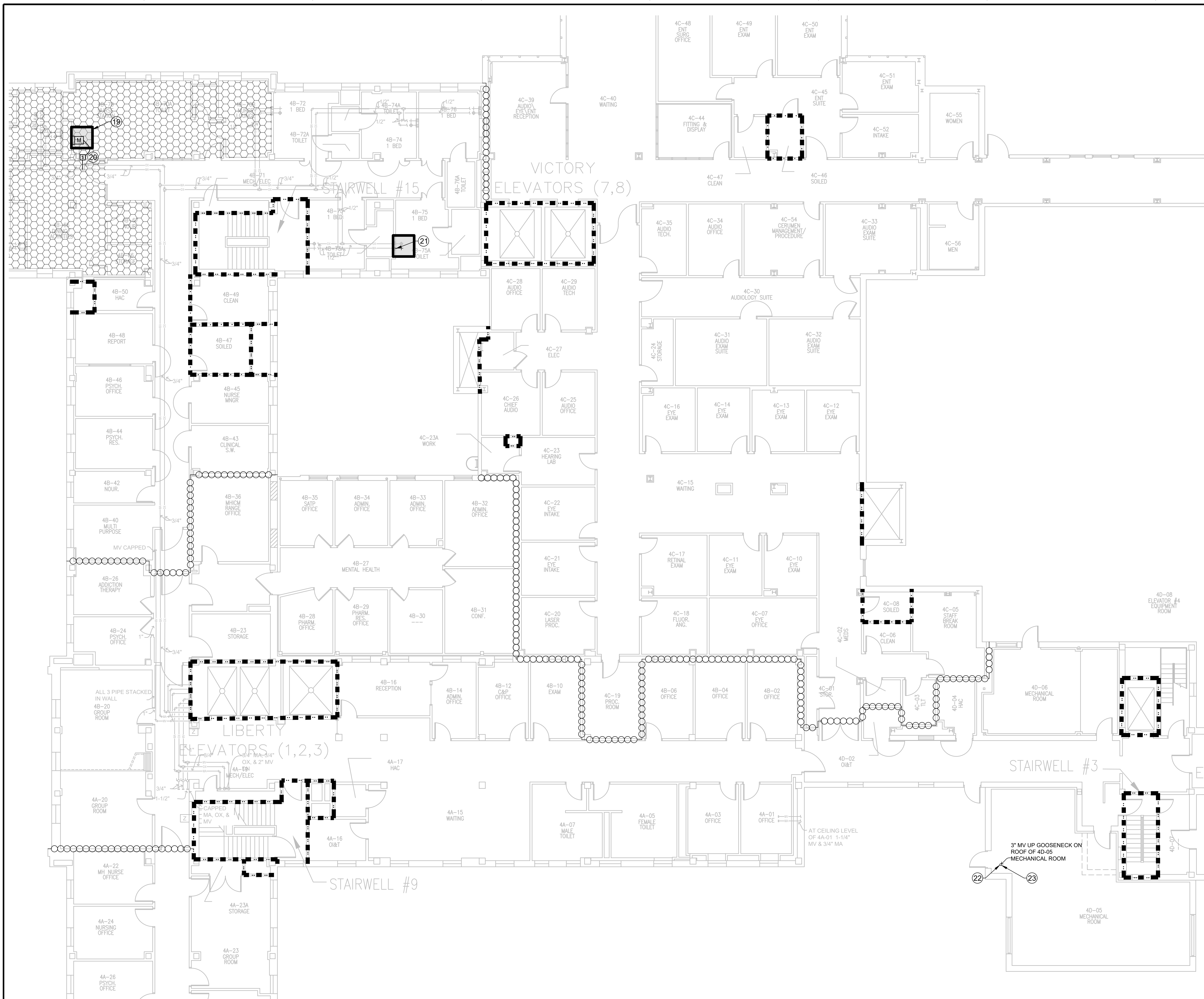
Drawing Number
A-2.31

Dwg. 10 of 40

Office of Construction and Facilities Management

Department of Veterans Affairs

one eighth inch = one foot
 one quarter inch = one foot
 three eighths inch = one foot
 one half inch = one foot
 three quarters inch = one foot
 one inch = one foot
 one and one half inches = one foot
 two inches = one foot
 three inches = one foot
 four inches = one foot
 five inches = one foot
 six inches = one foot
 seven inches = one foot
 eight inches = one foot
 nine inches = one foot
 ten inches = one foot
 eleven inches = one foot
 twelve inches = one foot



- GENERAL NOTES:**
1. THERE ARE OTHER UTILITIES, EQUIPMENT, ETC IN THIS SPACE THAT ARE NOT SHOWN FOR CLARITY. CONTRACTOR TO ACCOUNT FOR THESE ITEMS.
 2. ALL MED GAS PIPING IS LOCATED IN CEILINGS AND WALLS. PATCH WALLS AFTER WORK IS COMPLETE.
 3. PAINT TO MATCH EXISTING, COORDINATE WITH OWNER. IF COLOR CANNOT BE MATCHED, CONTRACTOR TO PAINT CORNER TO CORNER AND MAKE ACCENT WALL.
 4. CONTRACTOR TO SCHEDULE WORK WITH THE VA COR.
 5. MEDICAL GAS CERTIFICATIONS TO BE PERFORMED IN EACH AREA OR SYSTEM IMMEDIATELY AFTER IT IS COMPLETED.
 6. ALL OLD TO NEW SWITCH OVER NEEDS TO HAPPEN IN ONE NIGHT SHUTDOWN AND CERTIFIED AT THE SAME TIME.

- KEYED PHASING PLAN NOTES**
- 19 INSTALL DUST BARRIERS AROUND WORK AREA. SHUTDOWN ZONE WITH EXISTING ZONE VALVES. REMOVE EXISTING ZONE ALARM PANEL AND INSTALL NEW ZONE ALARM PANEL IN THE SAME LOCATION. REMOVE ALL THE PIPING FROM THE EXISTING ZONE ALARM PANEL TO THE MEDICAL GAS SUPPLY LINES. INSTALL NEW PRESSURE SENSORS IN EXISTING PIPING AND CONNECT TO NEW ZONE ALARM PANEL. M.H. UNIT REQUIRES CONTRACTORS TO TAKE SPECIALIZED TRAINING FROM VA. VA SIGNS OFF ON TRAINING COMPLETION. 4B LOCKED WARD TRAINING, RECORD ALL HAVE TO BE COMPLETE BEFORE WORK STARTS.
 - 20 EXTEND DUST BARRIER TO THIS WORK SPACE, OR ALTERNATIVELY USE HEPA CART FOR CEILING WORK.
 - 21 INSTALL DUST BARRIERS AROUND WORK AREA. INSTALL A NEW MEDICAL GAS OUTLET FOR MEDICAL AIR. NEW OUTLET SHALL BE CERTIFIED, APPROVED AND OPERATIONAL IMMEDIATELY AFTER INSTALLATION.
 - 22 COREDRILL NEW PENETRATION FOR 3" MEDICAL VACUUM PIPE.
 - 23 INSTALL 3" MV UP TO GOOSENECK ON ROOF OF 4D-05 MECHANICAL ROOM. TO BE COMPLETED AT THE SAME TIME AS EQUIPMENT REPLACEMENT SO IT CAN COMPLETED WITHIN ONE SHUTDOWN. NEW PIPING SHALL BE OPERATIONAL BEFORE REMOVING EXISTING VACUUM EXHAUST PIPING.

LINE LEGEND

	EXISTING
	DEMO
	NEW CONSTRUCTION
	ALARM PANEL
	ZONE VALVES
	SENSORS
	CONNECT POINT
	DISCONNECT POINT
	DUST BARRIER
	1-HR FIRE RATED WALL
	2-HR FIRE RATED WALL
	SMOKE BARRIER
	AREA UNDER CONSTRUCTION



1 FOURTH FLOOR - PHASING PLAN
 A-2.41 SCALE 1/8" = 1'-0"
 PLAN NORTH TRUE NORTH

100% CONSTRUCTION DOCUMENTS

CONSULTANTS: Revisions: _____ Date _____		ARCHITECT FOURFRONT DESIGN, INC. 517 7TH STREET RAPID CITY, SOUTH DAKOTA 57701 PH: (605) 342-9470 FAX: (605) 342-2377 WWW.FOURFRONTDESIGN.COM	Drawing Title FOURTH FLOOR - PHASING PLAN	Project Title UPGRADE MEDICAL GAS SYSTEM	Project Number 437-21-160	Office of Construction and Facilities Management
			Approved: Project Director Fargo VA Health Care System	Location 2101 ELM ST N, FARGO, ND 58102	Building Numbers 1,9,46	
			Date 07/07/2021	Checked RD	Drawn BM	Dwg. 11 of 40

ABBREVIATIONS:

Table of abbreviations including AC (ALTERNATING CURRENT), ADJ. (ADJUSTABLE), AS (AIR SEPARATOR), ASME (AMERICAN SOCIETY OF MECHANICAL ENGINEERS), BHP (BRAKE HORSEPOWER), BMS (BUILDING MANAGEMENT SYSTEM), CA (COMPRESSED AIR), CFM (CUBIC FEET PER MINUTE), CIL (CENTERLINE), CO (CLEANOUT), COEF (COEFFICIENT), COMLINK (COMMUNICATION LINK), COND (CONDENSATION), CONFIG (CONFIGURED), COR (CONTRACTING OFFICER'S REPRESENTATIVE), CV (CONTROL VALVE), DAMP. (DAMPER), DC (DIRECT CURRENT), DEG (DEGREES), DIFF. (DIFFERENTIAL), (E) (EXISTING), EA (EXHAUST AIR), ECC (ENERGY CONTROL CENTER), ELECT. (ELECTRICAL), ELEV (ELEVATION), ENT (ENTERING), F (FAHRENHEIT), FD (FLOOR DRAIN), FS (FLOOR SINK), FILT. (FILTER), FPM (FEET PER MINUTE), FT (FEET), GAL (GALLONS), G.C. (GENERAL CONTRACTOR), GPM (GALLONS PER MINUTE), HP (HORSEPOWER), HR (HOUR), HVAC (HEATING, VENTILATION, AND AIR CONDITIONING), HK (HEAT EXCHANGER), Hz (HERTZ), IBC (INTERNATIONAL BUILDING CODE), IECC (INTERNATIONAL ENERGY CONSERVATION CODE), IFB (INTEGRAL FACE AND BYPASS), IMC (INTERNATIONAL MECHANICAL CODE), IO (INPUT/OUTPUT), IPC (INTERNATIONAL PLUMBING CODE), L (LENGTH), LA (LABORATORY EQUIPMENT COMPRESSED AIR), LBS (POUNDS), MA (MEDICAL AIR), MAX (MAXIMUM), MBH (MECHANICAL CONTRACTOR), MECH (MECHANICAL MANUFACTURER), MFG (MINIMUM), MIN (MINUTE), mm (MILLIMETER), MV (MEDICAL VACUUM), N.C. (NORMALLY CLOSED), NC (NOISE CRITERIA LEVEL), NFPA (NATIONAL FIRE PROTECTION ASSOCIATION), NG (NATURAL GAS), N.O. (NORMALLY OPEN), NPT (NATIONAL PIPE THREAD), O2 (OXYGEN), ORD (OVERFLOW ROOF DRAIN), OSHA (OSHA), Pa (PASCAL), PD (PRESSURE DROP), PRESS. (PRESSURE), PSIG (POUNDS PER SQUARE INCH - GAUGE), QUANT. (QUANTITY), RA (RETURN AIR), RC (REHEAT STEAM COIL - AHU), RD (ROOF DRAIN), RE (RESIDENT ENGINEER), REQD (REQUIRED), RPM (REVOLUTIONS PER MINUTE), S (SUPPLY), SF (SQUARE FEET), SPEC (SPECIFICATION), SS (STAINLESS STEEL), T (THERMOSTAT), TYP (TYPICAL), V (VOLTS), VAC (MEDICAL VACUUM), W (WITH), WB (WET BULB), WG (INCHES OF WATER), ZAP (ZONE ALARM PANEL), ZVB (ZONE VALVE BOX), ZC (VALVE OR DAMPER CONTROLLER)

PLUMBING SYMBOLS

Table of plumbing symbols including 3-WAY CONTROL VALVE, 2-WAY CONTROL VALVE, CHECK VALVE, VALVE, GLOBE VALVE, BALANCING VALVE, GLOBE VALVE - MANUAL, FLOW CONTROL VALVE, GLOBE VALVE - ON/OFF, PRESSURE REDUCING VALVE, GLOBE VALVE - MODULATING, REDUCED PRESSURE ZONE VALVE, TEMPERATURE SENSOR, PRESSURE RELIEF VALVE, TEST PLUG, SOLENOID VALVE, POINT OF CONNECTION, PRESSURE GAUGE, POINT OF DISCONNECTION, THERMOMETER, TO BE DEMOLISHED, CONCENTRIC REDUCER, PLUMBING PLAN NOTE, PIPE UNION, TEE

GENERAL PLUMBING NOTES:

ALL WORK SHALL BE PERFORMED IN ACCORDANCE WITH THE REQUIREMENTS OF THE INTERNATIONAL BUILDING CODE (IBC), INTERNATIONAL MECHANICAL CODE (IMC), INTERNATIONAL PLUMBING CODE (IPC), INTERNATIONAL FUEL GAS CODE (IFGC), NFPA 99, NFPA 101 LIFE SAFETY CODE, AND ANY AUTHORITY HAVING JURISDICTION. THIS IS A FEDERAL PROJECT, AS SUCH ALL CODE REQUIREMENTS ARE REQUIRED.

ALL EQUIPMENT, MATERIALS, AND ARTICLES INCORPORATED IN THE WORK SHALL BE NEW AND OF COMPARABLE QUALITY AS SPECIFIED. ALL WORKMANSHIP SHALL BE FIRST-CLASS AND SHALL BE PERFORMED BY MECHANICS SKILLED AND REGULARLY EMPLOYED IN THEIR RESPECTIVE TRADES.

ALL WORK SHALL BE COORDINATED WITH ALL AFFECTED TRADES PRIOR TO STARTING WORK. REWORK REQUIRED DUE TO COORDINATION ISSUES SHALL BE PERFORMED BY THE INSTALLATION CONTRACTOR WITHOUT INCREASED COST TO THE OWNER.

THESE DRAWINGS ARE GENERAL IN NATURE. ALTHOUGH EVERY ATTEMPT HAS BEEN MADE TO INDICATE THE EXACT ROUTING AND LOCATION OF PROPOSED SYSTEMS, NOT ALL OFFSETS, REQUIRED FITTINGS AND/OR CONDITIONS CAN BE SHOWN. THE CONTRACTOR SHALL COORDINATE WORK AND MAKE REQUIRED CHANGES TO THE ROUTING IN ORDER TO AVOID CONFLICTS WITHOUT ANY INCREASED COST TO THE OWNER.

SYSTEMS DESIGNATED TO BE PROVIDED AND INSTALLED WITHIN THESE CONTRACT DOCUMENTS ARE INTENDED TO BE COMPLETE AND OPERATIONAL. PROVIDE EVERYTHING ESSENTIAL FOR THE COMPLETION OF THE WORK TO MAKE THE SYSTEM READY FOR NORMAL AND PROPER OPERATION, INCLUDING ALL WORK OR MATERIALS NOT DIRECTLY SHOWN ON THE DRAWINGS OR IN THE SPECIFICATIONS, BUT NECESSARY FOR THE PROPER OPERATION OF THE SYSTEM.

PLUMBING CONTRACTOR IS RESPONSIBLE FOR ENSURING PROPER MAINTENANCE CLEARANCES ARE MAINTAINED. CORRIDORS SHALL NOT BE COMPLETELY BLOCKED BY DUST BARRIERS, AT LEAST HALF OF THE CORRIDORS SHALL BE OPEN. CLOSE COORDINATION WILL BE REQUIRED WITH THE MECHANICAL PIPING, HVAC, FIRE PROTECTION, ELECTRICAL CONTRACTOR AND VA COR.

TURN OVER REMOVED EQUIPMENT AND SENSORS TO THE VA FOR SPARE PARTS OR DISPOSE OFF IF NOT WANTED BY FARGO VA BIOMED STAFF.

THE CONTRACTOR WILL BE ADDING NEW WALL PENETRATIONS IN A VARIETY OF WALL TYPES TO COMPLETE THIS PROJECT. ALL PENETRATIONS WILL BE SEALED MANUALLY FOR SMOKE AND FIRE SPREAD. FOR RATED WALL SHOWN ON PLANS, THE CONTRACTOR SHALL SUBMIT AND PROVIDE UL LISTED PENETRATION FOR EACH APPROPRIATE RATED ASSEMBLY PENETRATION. ALL PENETRATIONS SHALL BE SEALED AT THE END OF WORK SHIFT TO AVOID LEAVING AN OPENING OVERNIGHT.

CONTRACTOR TO UTILIZE ON-SITE HEPA CART FOR CONTAINMENT OF CEILING WORK. COORDINATE USAGE AND REQUIREMENT WITH THE VA. AT CONTRACTOR OPTION, THEY MAY PROVIDE THEIR OWN HEPA CART(S) FOR CONTAINMENT OF CEILING WORK.

EQUIPMENT NOTE: ALL EQUIPMENT SHOWN IN THESE SCHEDULES ARE BASIS OF DESIGN. OR EQUALS WILL BE ACCEPTED.

MEDICAL GAS ZONE ALARM SCHEDULE table with columns: ITEM, TYPE, MANUFACTURER & MODEL, NOTES. Item: TOUCH AREA ZONE ALARM PANEL, Model: BEACON MEDAES AREA ALARM PANEL M3-X10 OR EQUAL, Note: 1. CONTRACTOR TO VERIFY FINAL ALARM GAS TYPES AND QUANTITIES IN FIELD PRIOR TO ORDERING.

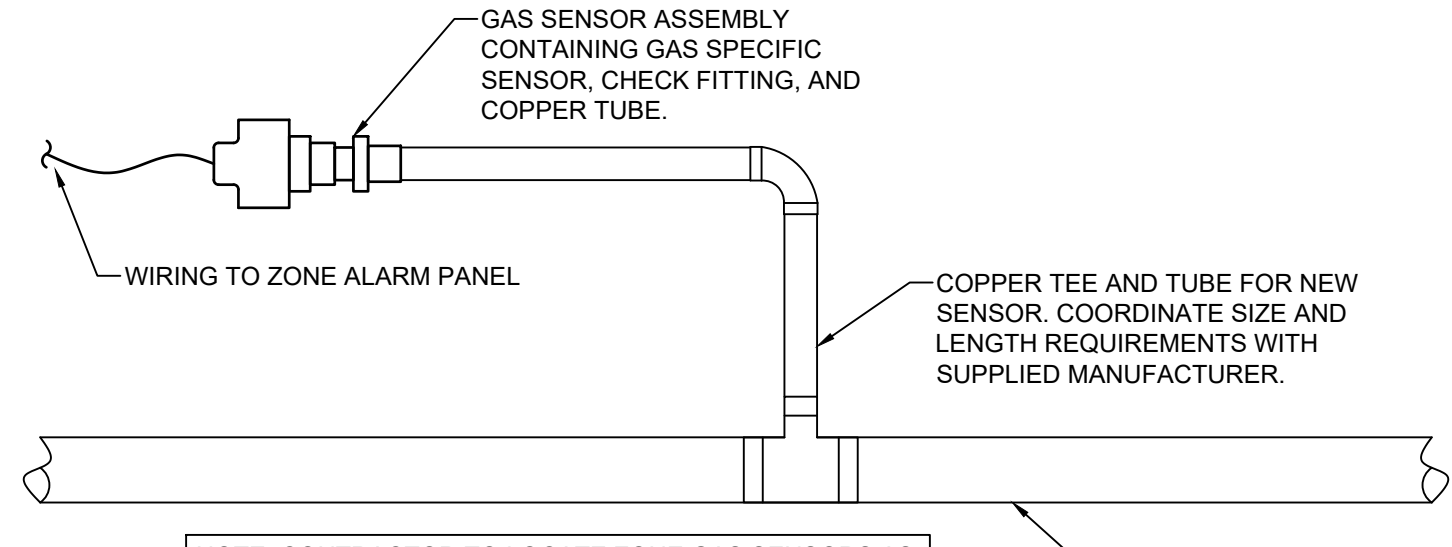
MEDICAL GAS MANIFOLD SCHEDULE table with columns: ITEM, GAS, MANUFACTURER & MODEL, DESCRIPTION, NOTES. Items: MGM-1 NITROGEN, MGM-2 NITROUS. Note: 1. CONNECT TO EXISTING POWER AND MEDICAL PIPE LEAVING MANIFOLD ROOM.

MEDICAL GAS EXTERIOR INLET SCHEDULE table with columns: ITEM, TYPE, MANUFACTURER & MODEL, NOTES. Items: MGI-1 VACUUM INLET, MGI-2 MEDICAL AIR INLET. Note: 1. INCLUDES PROVISIONS FOR PADLOCKING EXTERIOR BOX LABELED 'EMERGENCY LOW PRESSURE GASEOUS OXYGEN INLET'...

MEDICAL GAS OUTLET SCHEDULE table with columns: ITEM, TYPE, MANUFACTURER & MODEL, NOTES. Item: MGO-1 MEDICAL AIR FACEPLATE. Note: 1. CONTRACTOR TO VERIFY FINAL MOUNTING TYPE, FACEPLATE REQUIREMENT, AND OWNER DESIRED CONNECTION TYPE PRIOR TO ORDERING.

MEDICAL VACUUM SYSTEM SCHEDULE table with columns: ITEM, TANK SIZE (GALLONS), CAPACITY (SCFM), TYPE, MOTOR (HP/PHS), FLA, MCA, VOLTS (PH-CY), MANUFACTURER & MODEL, NOTES. Item: VAC-1 MEDICAL OIL-LESS VACUUM SYSTEM. Note: 1. CAPACITY SHOWN IS WITH ONE PUMP IN RESERVE.

MEDICAL AIR COMPRESSOR SCHEDULE table with columns: ITEM, TANK SIZE (GALLONS), CAPACITY (SCFM), TYPE, MOTOR (HP/PHS), FLA, MCA, VOLTS (PH-CY), MANUFACTURER & MODEL, NOTES. Item: MAC-1 MEDICAL SCROLL AIR COMPRESSOR. Note: 1. CAPACITY SHOWN IS WITH ONE COMPRESSOR IN RESERVE.



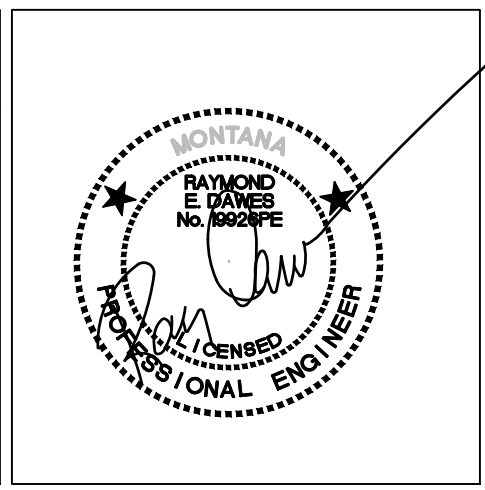
NOTE: CONTRACTOR TO LOCATE ZONE GAS SENSORS AS CLOSE TO THE ZONE ALARM DOWNSTREAM OF THE ZONE VALVE IN A LOCATION THAT IS ACCESSIBLE FOR MAINTENANCE AND REPAIR/REPLACEMENT OF SENSORS.

4 ZONE ALARM SENSOR DETAIL SCALE: NTS

100% CONSTRUCTION DOCUMENTS

Revisions table with columns: Revisions, Date

CONSULTANTS: table



ARCHITECT: FOURFRONT DESIGN, INC. 517 7TH STREET, RAPID CITY, SOUTH DAKOTA 57701. PH: (605) 342-9470, FAX: (605) 342-2377, WWW.FOURFRONTDESIGN.COM

Drawing Title: GENERAL NOTES, ABBREVIATIONS, SYMBOLS AND SCHEDULES. Approved: Project Director, Fargo VA Health Care System. Date: 07/07/2021. Checked: RD, Drawn: BM.

Project Title: UPGRADE MEDICAL GAS SYSTEM. Project Number: 437-21-160. Building Numbers: 1,9,46. Drawing Number: P-0.01. Dwg. 12 of 40.

Office of Construction and Facilities Management. Department of Veterans Affairs.