

Sioux Falls VA Medical Center Renovate Tower of Building 1 VA Project Number 438-18-102

2501 W 22nd St.
Sioux Falls, South Dakota 57105

Index of Drawings:

COVER SHEET
G-001 GENERAL NOTES, SYMBOLS, LEGEND AND GENERAL NOTES
G-002 ABBREVIATIONS, SYMBOLS, GENERAL NOTES, WALL TYPES
G-100 GENERAL NOTES, SYMBOLS, LEGEND AND GENERAL NOTES
G-102 SECOND, THIRD, & FOURTH FLOOR SAFETY PLANS
G-110 PHASING PLANS

Hazardous

HA001 GENERAL ASBESTOS ABATEMENT NOTES
HA100 BASEMENT ASBESTOS LOCATION PLAN
HA101 SECOND FLOOR ASBESTOS LOCATION PLAN
HA102 THIRD FLOOR ASBESTOS LOCATION PLAN
HA103 FOURTH FLOOR ASBESTOS LOCATION PLAN
HA104 FLOOR ASBESTOS LOCATION PLAN
HA200 BASEMENT LEAD-BASED PAINT LOCATION PLAN
HA201 THIRD FLOOR LEAD-BASED PAINT LOCATION PLAN
HA202 FLOOR LEAD-BASED PAINT LOCATION PLAN
HA204 ROOF LEAD-BASED PAINT LOCATION PLAN

CM

C1.0 WATER AND SPRINKLER LAYOUT
C1.1 DEMOLITION AND PAVING PLAN
C2.0 GRADING AND PAVING PLAN
C3.0 UTILITY PLAN

Structural

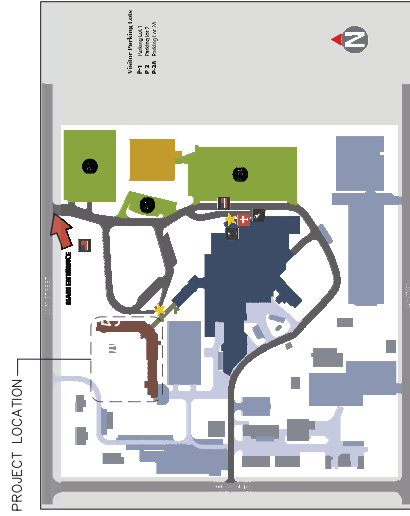
S-100 FOUNDATION PLAN
S-101 FOUNDATION FRAMING PLAN
S-102 ROOF FRAMING PLAN
S-200 GENERAL NOTES & DETAILS

Architectural

AD-100 BASEMENT DEMOLITION PLAN
AD-101 FIRST FLOOR DEMOLITION PLAN
AD-102 SECOND FLOOR DEMOLITION PLAN
AD-103 THIRD & FOURTH FLOOR DEMOLITION PLAN
AD-104 ROOF DEMOLITION PLAN
A-100 BASEMENT FLOOR PLAN
A-101 FIRST FLOOR PLAN
A-102 SECOND FLOOR PLAN
A-103 THIRD & FOURTH FLOOR PLAN
A-104 ROOF PLAN
A-105 ENLARGED ELEVATOR PLANS
AC-100 REFLECTED CEILING PLANS
AC-101 EXTERIOR ELEVATIONS
AC-102 EXTERIOR ELEVATIONS
AC-200 EXTERIOR ELEVATIONS
AC-201 EXTERIOR ELEVATIONS
AC-202 EXTERIOR ELEVATIONS
A-203 EXTERIOR ELEVATIONS
A-300 WALL SECTIONS
A-301 WALL SECTIONS
A-302 WALL SECTIONS
A-400 DETAILS
A-700 DOOR AND FRAME SCHEDULE
A-701 PRECAST CONCRETE ELEVATION DETAILS

Fire

FG-101 FIRE SUPPRESSION SYMBOLS, LEGEND AND GENERAL NOTES
FG-102 FIRST FLOOR FIRE SUPPRESSION DEMOLITION PLANS
FG-103 SECOND FLOOR FIRE SUPPRESSION DEMOLITION PLANS
FG-104 THIRD FLOOR FIRE SUPPRESSION DEMOLITION PLANS
FD-101 FIRST FLOOR FIRE SUPPRESSION DEMOLITION PLANS
FD-102 SECOND FLOOR FIRE SUPPRESSION DEMOLITION PLANS
FD-103 THIRD FLOOR FIRE SUPPRESSION DEMOLITION PLANS
FD-104 FOURTH FLOOR FIRE SUPPRESSION DEMOLITION PLANS
FX-100 BASEMENT FIRE SUPPRESSION PLANS
FX-101 FIRST FLOOR FIRE SUPPRESSION PLANS
FX-102 SECOND FLOOR FIRE SUPPRESSION PLANS
FX-103 THIRD FLOOR FIRE SUPPRESSION PLANS
FX-104 FOURTH FLOOR FIRE SUPPRESSION PLANS



CAMPUS PLAN
NOT TO SCALE

IMPORTANT CONTRACTOR NOTES:

- ALL CONTRACTORS ARE RESPONSIBLE FOR REVIEWING ENTIRE SET OF DOCUMENTS TO VERIFY ALL WORK IS IN ACCORDANCE WITH THE CONTRACT AND ALL APPLICABLE CODES. EXTRA COSTS WILL BE INCURRED TO CORRECT ANY ERRORS.
- COVER AND PROTECT ALL VA EQUIPMENT AND FURNITURE SO THAT THE FUNCTION AND APPEARANCE IS NOT AFFECTED BY CONSTRUCTION. THE CONTRACTOR, THEIR SUBS, AND VENDORS SHALL BE RESPONSIBLE FOR PROTECTING ALL VA EQUIPMENT AND FURNITURE.
- A 1/4" MINIMUM BREAST-LEVEL SEPARATION IS REQUIRED BETWEEN ALL OCCUPIED WORK AREAS AND CONSTRUCTION AREAS. THIS PROTECTION INCLUDES ANY EXISTING FENCES AND DRINKING FOUNTAINS.

BID DOCUMENTS

Mechanical

MG-001 MECHANICAL SYMBOLS, LEGEND AND GENERAL NOTES
MG-100 MECHANICAL DEMOLITION PLANS
MD-101 FIRST FLOOR MECHANICAL DEMOLITION PLANS
MD-102 SECOND FLOOR MECHANICAL DEMOLITION PLANS
MD-103 THIRD FLOOR MECHANICAL DEMOLITION PLANS
MD-104 FOURTH FLOOR MECHANICAL DEMOLITION PLANS
MH-100 BASEMENT HVAC PLANS
MH-101 FIRST FLOOR HVAC PLANS
MH-102 SECOND FLOOR HVAC PLANS
MH-103 THIRD FLOOR HVAC PLANS
MH-104 FOURTH FLOOR HVAC PLANS
MP-100 BASEMENT MECHANICAL PIPING PLANS
MP-101 FIRST FLOOR MECHANICAL PIPING PLANS
MP-102 SECOND FLOOR MECHANICAL PIPING PLANS
MP-103 THIRD FLOOR MECHANICAL PIPING PLANS
MP-104 FOURTH FLOOR MECHANICAL PIPING PLANS
M3-01 MECHANICAL SECTIONS
M5-01 MECHANICAL DETAILS
M5-02 MECHANICAL DETAILS
M6-01 MECHANICAL CONTROL DIAGRAMS
M6-02 MECHANICAL CONTROL DIAGRAMS
M6-03 MECHANICAL CONTROL DIAGRAMS
M6-04 MECHANICAL CONTROL DIAGRAMS
M7-01 MECHANICAL SCHEDULES

Plumbing

PD-100 BASEMENT PLUMBING DEMOLITION PLANS
PD-101 FIRST FLOOR PLUMBING DEMOLITION PLANS
PD-102 SECOND FLOOR PLUMBING DEMOLITION PLANS
PD-103 THIRD FLOOR PLUMBING DEMOLITION PLANS
PD-104 FOURTH FLOOR PLUMBING DEMOLITION PLANS
PL-100 BASEMENT PLUMBING PLANS
PL-101 FIRST FLOOR PLUMBING PLANS
PL-102 SECOND FLOOR PLUMBING PLANS
PL-103 THIRD FLOOR PLUMBING PLANS
PL-104 FOURTH FLOOR PLUMBING PLANS
P5-01 PLUMBING DETAILS
P6-01 PLUMBING ONE-LINE RISER DIAGRAMS
P7-01 PLUMBING SCHEDULES

Electrical

EG-101 ELECTRICAL SYMBOLS, LEGEND AND GENERAL NOTES
EG-100 BASEMENT ELECTRICAL DEMOLITION PLANS
ED-101 FIRST FLOOR ELECTRICAL DEMOLITION PLANS
ED-102 SECOND FLOOR ELECTRICAL DEMOLITION PLANS
ED-103 THIRD FLOOR ELECTRICAL DEMOLITION PLANS
ED-104 FOURTH FLOOR ELECTRICAL DEMOLITION PLANS
EL-100 BASEMENT LIGHTING PLANS
EL-101 FIRST FLOOR LIGHTING PLANS
EL-102 SECOND FLOOR LIGHTING PLANS
EL-103 THIRD FLOOR LIGHTING PLANS
EL-104 FOURTH FLOOR LIGHTING PLANS
EP-100 BASEMENT POWER PLANS
EP-101 FIRST FLOOR POWER PLANS
EP-102 SECOND FLOOR POWER PLANS
EP-103 THIRD FLOOR POWER PLANS
EP-104 FOURTH FLOOR POWER PLANS
EY-100 BASEMENT SPECIAL SYSTEMS PLANS
EY-101 FIRST FLOOR SPECIAL SYSTEMS PLANS
EY-102 SECOND FLOOR SPECIAL SYSTEMS PLANS
EY-103 THIRD FLOOR SPECIAL SYSTEMS PLANS
EY-104 FOURTH FLOOR SPECIAL SYSTEMS PLANS
EY-200 OVERALL BLDG 1 AND BLDG 5 BASEMENT SPECIAL SYSTEMS PLAN
EY-201 OVERALL BLDG 1 AND BLDG 5 FIRST FLOOR SPECIAL SYSTEMS PLAN
E5-01 ELECTRICAL DETAILS
E6-01 ELECTRICAL DETAILS
E7-01 ELECTRICAL SCHEDULES

STAMP 		ARCHITECT/ENGINEER OF RECORD 	Office of Construction and Facilities Management 	COVER SHEET Approved Project Officer	Project No. RENOVATE TOWER BUILDING 1	Project Number 438-18-102
DATE 05/20/19 06/10/19 06/10/19 06/10/19 06/10/19	BY [Signature] [Signature] [Signature] [Signature] [Signature]	REVISIONS 1. [Description] 2. [Description] 3. [Description]	CONSULTANT	Project No. RENOVATE TOWER BUILDING 1	Project Number 438-18-102	Revision Number 1
Checklist Drawn: [Name] Date: [Date] Checked: [Name] Date: [Date]			FULLY SPRINKLERED	Project No. RENOVATE TOWER BUILDING 1	Project Number 438-18-102	Revision Number 1

NOTES:
 A. NO DIMENSIONS SHOWN
 B. ALL DIMENSIONS ARE TO FACE UNLESS NOTED OTHERWISE
 C. DIMENSIONS TO FACE UNLESS NOTED OTHERWISE
 DATED: 05/20/2019

SMOKE COMPARTMENT LEGEND

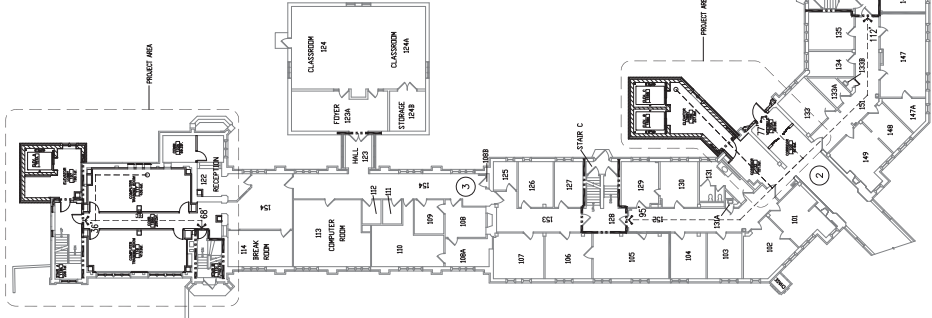
AREA	SMOKE COMPARTMENT TYPE
1	TYPE 1
2	TYPE 2
3	TYPE 3
4	TYPE 4
5	TYPE 5
6	TYPE 6
7	TYPE 7
8	TYPE 8
9	TYPE 9
10	TYPE 10

LEGEND

SYMBOL	DESCRIPTION
[Symbol]	INTERCOMPTMENT
[Symbol]	PERMITS CONSTRUCTION
[Symbol]	PERMITS OCCUPANCY

AREA & OCCUPANCY TYPE

AREA	OCCUPANCY TYPE
100	OFFICE
101	OFFICE
102	OFFICE
103	OFFICE
104	OFFICE
105	OFFICE
106	OFFICE
107	OFFICE
108	OFFICE
109	OFFICE
110	OFFICE
111	OFFICE
112	OFFICE
113	OFFICE
114	OFFICE
115	OFFICE
116	OFFICE
117	OFFICE
118	OFFICE
119	OFFICE
120	OFFICE
121	OFFICE
122	OFFICE
123	OFFICE
124	OFFICE
125	OFFICE
126	OFFICE
127	OFFICE
128	OFFICE
129	OFFICE
130	OFFICE
131	OFFICE
132	OFFICE
133	OFFICE
134	OFFICE
135	OFFICE
136	OFFICE
137	OFFICE
138	OFFICE
139	OFFICE
140	OFFICE
141	OFFICE
142	OFFICE
143	OFFICE
144	OFFICE
145	OFFICE
146	OFFICE
147	OFFICE
148	OFFICE
149	OFFICE
150	OFFICE
151	OFFICE
152	OFFICE
153	OFFICE
154	OFFICE
155	OFFICE
156	OFFICE
157	OFFICE
158	OFFICE
159	OFFICE
160	OFFICE
161	OFFICE
162	OFFICE
163	OFFICE
164	OFFICE
165	OFFICE
166	OFFICE
167	OFFICE
168	OFFICE
169	OFFICE
170	OFFICE
171	OFFICE
172	OFFICE
173	OFFICE
174	OFFICE
175	OFFICE
176	OFFICE
177	OFFICE
178	OFFICE
179	OFFICE
180	OFFICE
181	OFFICE
182	OFFICE
183	OFFICE
184	OFFICE
185	OFFICE
186	OFFICE
187	OFFICE
188	OFFICE
189	OFFICE
190	OFFICE
191	OFFICE
192	OFFICE
193	OFFICE
194	OFFICE
195	OFFICE
196	OFFICE
197	OFFICE
198	OFFICE
199	OFFICE
200	OFFICE
201	OFFICE
202	OFFICE
203	OFFICE
204	OFFICE
205	OFFICE
206	OFFICE
207	OFFICE
208	OFFICE
209	OFFICE
210	OFFICE
211	OFFICE
212	OFFICE
213	OFFICE
214	OFFICE
215	OFFICE
216	OFFICE
217	OFFICE
218	OFFICE
219	OFFICE
220	OFFICE
221	OFFICE
222	OFFICE
223	OFFICE
224	OFFICE
225	OFFICE
226	OFFICE
227	OFFICE
228	OFFICE
229	OFFICE
230	OFFICE
231	OFFICE
232	OFFICE
233	OFFICE
234	OFFICE
235	OFFICE
236	OFFICE
237	OFFICE
238	OFFICE
239	OFFICE
240	OFFICE
241	OFFICE
242	OFFICE
243	OFFICE
244	OFFICE
245	OFFICE
246	OFFICE
247	OFFICE
248	OFFICE
249	OFFICE
250	OFFICE
251	OFFICE
252	OFFICE
253	OFFICE
254	OFFICE
255	OFFICE
256	OFFICE
257	OFFICE
258	OFFICE
259	OFFICE
260	OFFICE
261	OFFICE
262	OFFICE
263	OFFICE
264	OFFICE
265	OFFICE
266	OFFICE
267	OFFICE
268	OFFICE
269	OFFICE
270	OFFICE
271	OFFICE
272	OFFICE
273	OFFICE
274	OFFICE
275	OFFICE
276	OFFICE
277	OFFICE
278	OFFICE
279	OFFICE
280	OFFICE
281	OFFICE
282	OFFICE
283	OFFICE
284	OFFICE
285	OFFICE
286	OFFICE
287	OFFICE
288	OFFICE
289	OFFICE
290	OFFICE
291	OFFICE
292	OFFICE
293	OFFICE
294	OFFICE
295	OFFICE
296	OFFICE
297	OFFICE
298	OFFICE
299	OFFICE
300	OFFICE
301	OFFICE
302	OFFICE
303	OFFICE
304	OFFICE
305	OFFICE
306	OFFICE
307	OFFICE
308	OFFICE
309	OFFICE
310	OFFICE
311	OFFICE
312	OFFICE
313	OFFICE
314	OFFICE
315	OFFICE
316	OFFICE
317	OFFICE
318	OFFICE
319	OFFICE
320	OFFICE
321	OFFICE
322	OFFICE
323	OFFICE
324	OFFICE
325	OFFICE
326	OFFICE
327	OFFICE
328	OFFICE
329	OFFICE
330	OFFICE
331	OFFICE
332	OFFICE
333	OFFICE
334	OFFICE
335	OFFICE
336	OFFICE
337	OFFICE
338	OFFICE
339	OFFICE
340	OFFICE
341	OFFICE
342	OFFICE
343	OFFICE
344	OFFICE
345	OFFICE
346	OFFICE
347	OFFICE
348	OFFICE
349	OFFICE
350	OFFICE
351	OFFICE
352	OFFICE
353	OFFICE
354	OFFICE
355	OFFICE
356	OFFICE
357	OFFICE
358	OFFICE
359	OFFICE
360	OFFICE
361	OFFICE
362	OFFICE
363	OFFICE
364	OFFICE
365	OFFICE
366	OFFICE
367	OFFICE
368	OFFICE
369	OFFICE
370	OFFICE
371	OFFICE
372	OFFICE
373	OFFICE
374	OFFICE
375	OFFICE
376	OFFICE
377	OFFICE
378	OFFICE
379	OFFICE
380	OFFICE
381	OFFICE
382	OFFICE
383	OFFICE
384	OFFICE
385	OFFICE
386	OFFICE
387	OFFICE
388	OFFICE
389	OFFICE
390	OFFICE
391	OFFICE
392	OFFICE
393	OFFICE
394	OFFICE
395	OFFICE
396	OFFICE
397	OFFICE
398	OFFICE
399	OFFICE
400	OFFICE



FIRST FLOOR PLAN
 DATE: 05/20/2019



BASEMENT FLOOR PLAN
 DATE: 05/20/2019

<p>Office of Construction and Facilities Management U.S. Department of Veterans Affairs</p>	<p>Project No: RENOVATE TOWER BUILDING 1 Building Number: 488-18-102 Drawing Number: 1</p>
<p>ARCHITECT/ENGINEER OF RECORD CLH CONSULTANTS 121030718 121030718 121030718 121030718 121030718</p>	<p>BID DOCUMENTS FULLY SPRINKLERED</p>
<p>STAMP ARCHITECT/ENGINEER OF RECORD CLH CONSULTANTS 121030718 121030718 121030718 121030718 121030718</p>	<p>BASEMENT & FIRST FLOOR LIFE SAFETY PLANS APPROVED PROJECT DESIGNER</p>
<p>CONSULTANT</p>	<p>GI-101</p>

DESCRIPTION	FRAGILE	EST. QTY. OF ABATEMENT
FLOOR TILE - WASTE	NO	7,200 SF
FLOOR TILE - TRANSIT (TSI) PIPE	YES	200 SF
TSI DEBRIS - BELOW FLOOR PIPE CHASE	NO	180 SF
TRANSIT PIPE	YES	750 LF
BUDGET ESTIMATE OF CONCRETE TSI IN VERTICAL PIPE CHASES	YES	750 LF

DESCRIPTION	PEELING OR DELAMINATING	EST. QTY.
PAINTED WALLS	NO	1,800 SF
DOWNSPOUTS - EXTERIOR	NO	40 LF



Asbestos Abatement Phasing:

- The abatement contractor shall work closely with the General Contractor, contracting officer, owner or owner's representative, and/or the VPIH to coordinate removal of ACM in accordance with project scheduling, sequencing, and phasing requirements. After hours and week-end work may be required. Phasing is subject to change to accommodate site conditions and facility operations.

Paint Containing Lead:

- Lead-based paint (LBP) are paints that contain lead ≥ 1.0 mg/m² or 20.5 percent by weight. Paint containing lead (PCL) is paint with a detectable level of lead. LBP and PCL are known to exist on materials, components, and surfaces that may be disturbed, penetrated, refinished, or demolished. Perform demolition of materials and components with LBP and/or PCL in accordance with applicable regulations and the approved work plan.
- Flaking and peeling LBP and/or PCL on surfaces to remain shall be removed and stabilized using methods in accordance with Section 02.83.33.13, Lead-Based Paint Removal and Disposal.
- If walls with LBP are to be demolished, wall may be removed and disposed of in accordance with approval from General Contractor. Perform removal and disposal in accordance with Section 02.83.33.13.
- Refer to the Hazardous Building Materials Inspection Report by AMI Environmental, dated January 9, 2019, for information concerning the presence of LBP and PCL in the project areas.

Asbestos Notes:

- The project area was recently surveyed for ACM. Refer to the hazardous building materials inspection report by AMI Environmental, dated January 9, 2019, for more information about ACMs identified in the project area.
- Concealed ACM pipe insulation (TSI) may exist within walls and pipe chases and above rigid ceilings. Coordinate access with demolition drawings and the general contractor. Some exploratory demolition may be required to determine if concealed ACM is present.
- Establish regulated areas (RA) and negative pressure enclosures (NPE) and perform removal in accordance with applicable specification sections: Sec. 02.82.13.13, Globeset Asbestos Abatement; Sec. 02.82.11, Traditional Asbestos Abatement; Sec. 02.82.13.19, Asbestos Floor Tile And Mastic Abatement; 02.82.13.31 Asbestos Transit And Class II Abatement. Finalize limits of regulated areas, locations of negative air machines (NAM), personal decontamination facilities (PDF), and waste decontamination facilities (WDF) based on site conditions, best practices and phasing requirements.
- Assume 50% efficiency when calculating NAM requirements for achieving four (4) air changes per hour and provided greater than -0.02" WCG pressure. Configure and place NAMs as needed to maximize air movement and prevent dead air space. Coordinate negative air discharge locations with general contractor, owner's representative, and VPIH, if needed.
- TSI abatement from sections of pipe and fittings to be demolished may be performed using glovebags to accomplish wrap and cut methods if approved by the general contractor. Coordinate with mechanical demolition drawings and the mechanical contractor.

General Notes:

- These drawings are diagrammatic and for general identification of asbestos-containing materials (ACM) and lead-based paint (LBP) subject to removal or disturbance. Their accuracy is not guaranteed. Locations and quantities shown of ACM and LBP to be removed are representative based on recent and preexisting site survey information. The abatement contractor shall be responsible for field verifying all material locations and removal quantities, and existing site conditions.
- Asbestos removal is being performed pursuant to renovation of the project areas. Remove and dispose of all ACM in accordance with applicable regulations, project specifications, and the approved asbestos hazard abatement plan (AHAP). If suspect ACMs are encountered during construction and demolition that are not identified on the asbestos abatement drawings, stop work and contact the project manager and VPIH.
- All work is to be performed in accordance with all applicable federal, state, and local regulations; project specifications, the approved work plan, and accepted industry practice. When requirements overlap or conflict, the most stringent requirement shall apply. All work shall subject to inspection by the owner, the owner's consultants, and regulatory personnel.
- Demolition of non-ACM building materials may be required to access regulated materials, including, but not limited to, cabinets, raised flooring, gypsum wallboard, expanded metal or wood lath and plaster walls and ceilings, wall framing, carpet, ceramic and vinyl floor coverings, wood, etc. The abatement contractor shall be responsible for demolition of non-ACM materials as needed to access regulated materials for abatement, and for coordinating the limits of demolition and abatement with the general contractor.
- All costs associated with exploratory demolition and demolition of non-ACM materials needed to accomplish abatement shall be included in the abatement contractor's lump sum price for the project.

Contract Documents 50%, Submittal (CD)	04/11/2019
Contract Documents 25%, Submittal (CD)	07/10/2019
Design Development (DD)	10/10/2018
Final Design (FD)	03/22/2019
Revision:	None

AMI ENVIRONMENTAL CONSULTANT
 802 South 13th Street, Suite 100
 Omaha, NE 68102
 (402) 378-2000

ARCHITECT/ENGINEER OF RECORD
CJH
 3102 West 240th Street
 Omaha, NE 68112
 (402) 378-1600

Office of Construction and Facilities Management
 U.S. Department of Veterans Affairs

General Asbestos Abatement Notes
 Approved Project Director

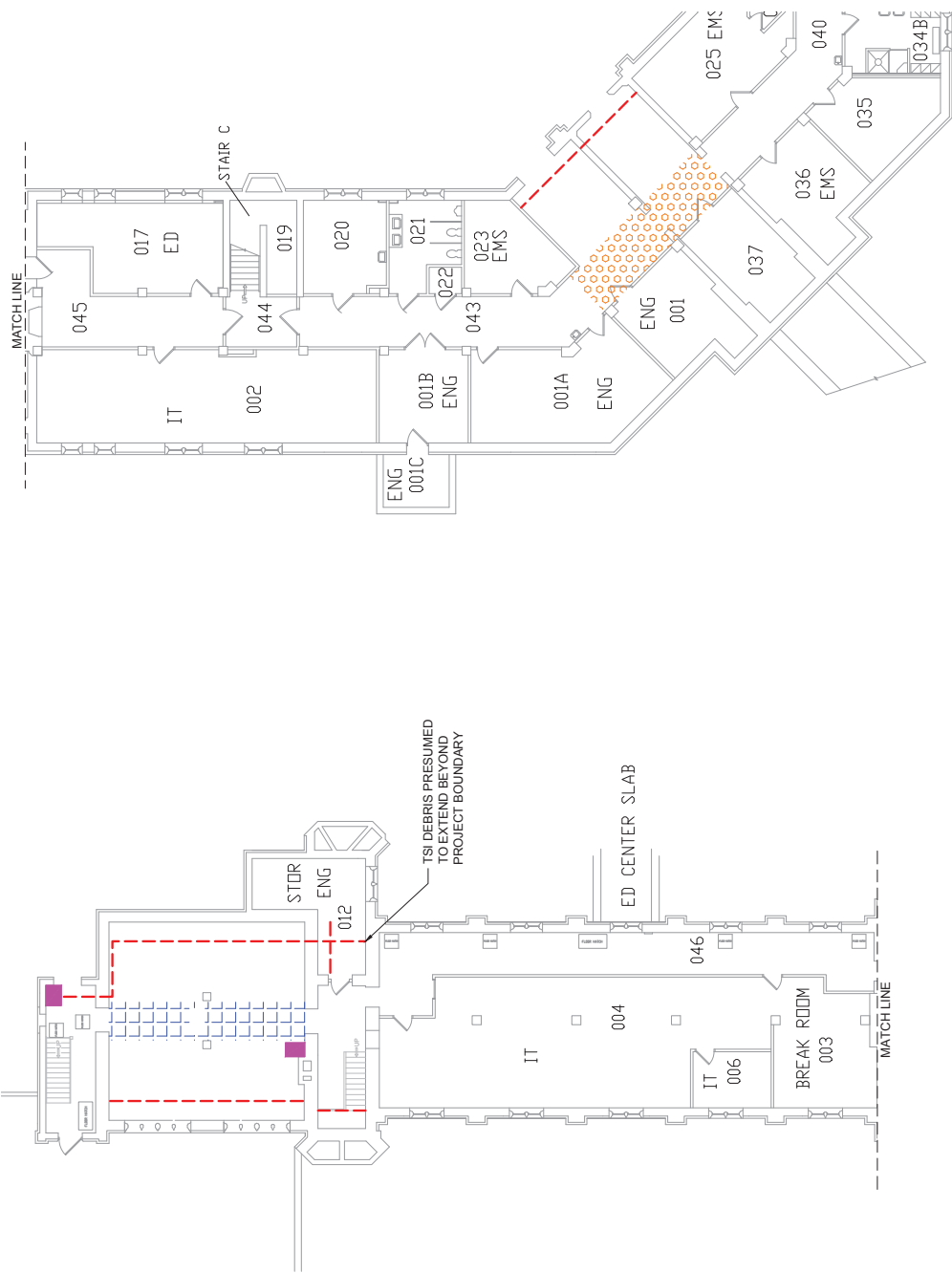
BID DOCUMENTS
 FULLY SPRINKLERED

Project File
 Project Name: RENOVATE TOWER BUILDING 1
 Project Number: 438-18-102
 Revision Number: 1
 Station: Sioux Falls, SD 57105
 Issue Date: 03/08/19
 Checked: []
 Drawn: JAC
 RO: []
 Drawing Number: HA001

1 GENERAL ASBESTOS ABATEMENT NOTES
 NOT TO SCALE

Asbestos Notes

1. Establish regulated area and remove 12" x 12" VFT and mastic, in accordance with Section 02 82 13.19.
2. Establish regulated area and remove Thermal System Insulation (TSI) covered pipe and fittings using glovebag abatement methods as required by Section 02 82 13.13. For sections of pipe to be demolished, wrap and cut methods may be used only if approved by the General Contractor.
3. Establish regulated area and remove transite pipe in accordance with Section 02 82 12.31 Asbestos Transite Abatement, if required. Removal may be accomplished using wrap and cut methods. Glovebags may be used to contain fibers during manual demolition to establish sections for removal.
4. Establish regulated area and remove Thermal System Insulation (TSI) debris located in the below floor pipe chase in both Main and Tower areas in accordance with Section 02 82 11, Traditional Asbestos Abatement.
5. When glovebag methods are not feasible, use full containment and isolation procedures (Major Decontamination Areas) in accordance with Section 02 82 11, Traditional Asbestos Abatement.
6. Enclosed vertical pipe chases are present in the Tower. One is visible from the basement (00) level on the exterior corner of the stairwell. The other vertical chase is visible in Room 360 adjacent to the hall and the stairwell. These pipe chases may contain Asbestos Containing TSI. If TSI is found when the pipe chases are opened, the material may be assumed as ACM, or tested for asbestos content.



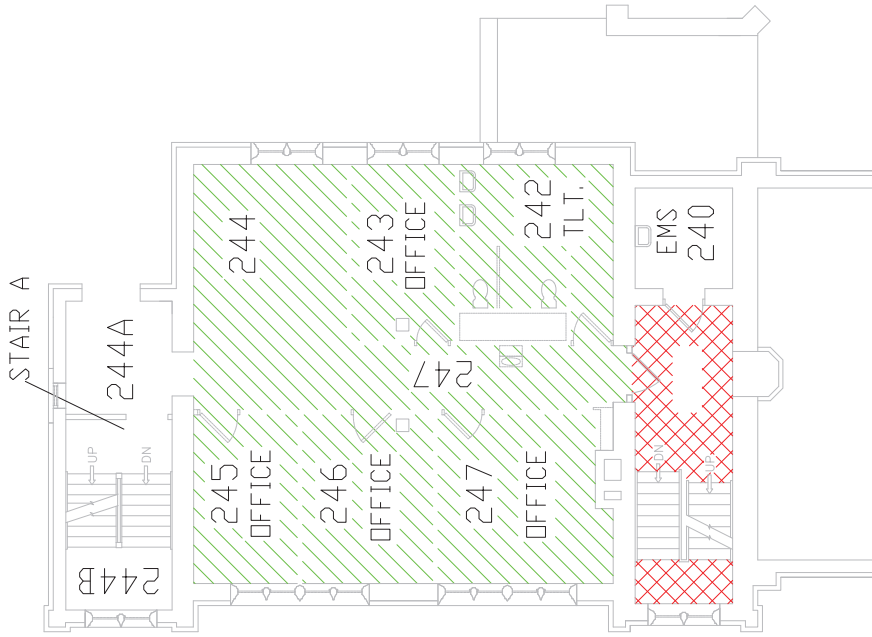
Summary Of Asbestos-Containing Materials (ACM)			
DESCRIPTION	FRIBABLE	EST. QTY.	HATCHING
THERMAL SYSTEM INSULATION (TSI) DEBRIS - BELOW FLOOR PIPE CHASE	YES	200 SF	[Red dashed line]
TSI PIPE ABOVE CEILING	YES	60 LF	[Blue hatched area]
TSI ESTIMATED IN TWO (2) ENCLOSED PIPE CHASES	YES	750 LF	[Purple hatched area]
TRANSITE PIPE ABOVE CEILING	NO	160 LF	[Orange hatched area]

1 Building 1.00, West Wing/Center - ASBESTOS LOCATIONS
NOT TO SCALE

CONSULTANT AMI ENVIRONMENTAL 802 South 10th Street, Suite 100 Columbia, SC 29202 (803) 733-3000		ARCHITECT/ENGINEER OF RECORD CJH 3702 West 20th Street Birmingham, AL 35202 (205) 379-6661		ARCHITECT/ENGINEER OF RECORD FABRIS ENGINEERING 1000 North 10th Street Birmingham, AL 35202 (205) 379-6661		Office of Construction and Facilities Management U.S. Department of Veterans Affairs		Project File Basement Asbestos Location Plan Approved: Project Director		Project File RENOVATE TOWER BUILDING 1 438-18-102 Revision Number 1	
Contract Documents 50% Submittal (CD) 04/11/2019 Contract Documents 25% Submittal (CD) 07/10/2019 Design Development (DD) 07/10/2019 Schematic Design (SD) 07/10/2019 Revision:		AM		STAMP		Office of Construction and Facilities Management U.S. Department of Veterans Affairs		Revision BID DOCUMENTS		Project Number 438-18-102 Revision Number 1	
Contract Documents 50% Submittal (CD) 04/11/2019 Contract Documents 25% Submittal (CD) 07/10/2019 Design Development (DD) 07/10/2019 Schematic Design (SD) 07/10/2019 Revision:		AM		STAMP		Office of Construction and Facilities Management U.S. Department of Veterans Affairs		Revision FULLY SPRINKLERED		Project Number HA100 Revision Number 1	

Asbestos Notes

1. Establish regulated area and remove 12" x 12" VFT and mastic, in accordance with Section 02 82 13.19.
2. Establish regulated area and remove Thermal System Insulation (TSI) covered pipe and fittings using glovebag abatement methods as required by Section 02 82 13.13. For sections of pipe to be demolished, wrap and cut methods may be used only if approved by the General Contractor.
3. Establish regulated area and remove, transite pipe in accordance with Section 02 82 12.31 Asbestos Transite Abatement, if required. Removal may be accomplished using wrap and cut methods. Glovebags may be used to contain fibers during manual demolition to establish sections for removal.
4. Establish regulated area and remove Thermal System Insulation (TSI) debris located in the below floor pipe chase in both Main and Tower areas in accordance with Section 02 82 11, Traditional Asbestos Abatement.
5. When glovebag methods are not feasible, use full containment and isolation procedures (Major Decontamination Areas) in accordance with Section 02 82 11, Traditional Asbestos Abatement.
6. Enclosed vertical pipe chases are present in the Tower. One is visible from the basement (00) level on the exterior corner of the stairwell. The other vertical chase is visible in Room 360 adjacent to the hall and the stairwell. These pipe chases may contain Asbestos Containing TSI. If TSI is found when the pipe chases are opened, the material may be assumed as ACM, or tested for asbestos content.



Summary Of Asbestos-Containing Materials (ACM)

DESCRIPTION	FRIABLE	EST. QTY.	HATCHING
12"x12" VINYL FLOOR TILE (VFT) AND MASTIC	NO*	134 SF	
VFT UNDER CARPET	NO*	1,038 SF	

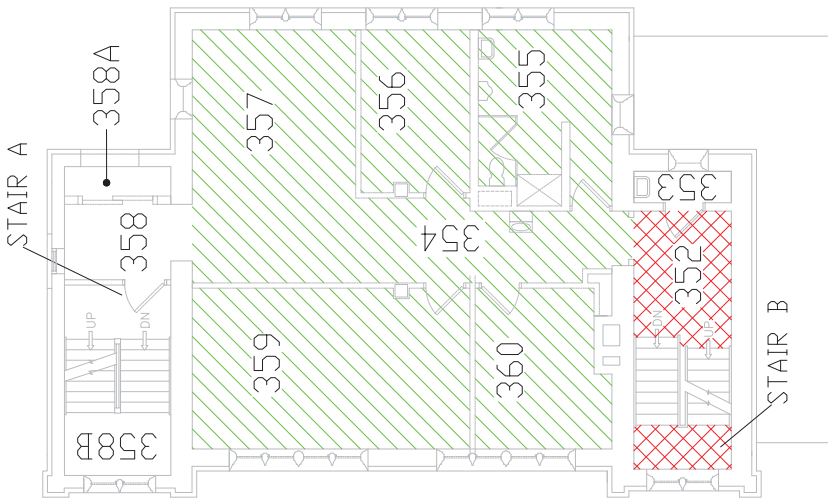
1 Building 1.02, West Wing/Center - ASBESTOS LOCATIONS
NOT TO SCALE



CONSULTANT AMI ENVIRONMENTAL 1805 South 104th Street, Suite 110 Omaha, NE 68147 (402) 391-0200		ARCHITECT/ENGINEER OF RECORD FARRIS ENGINEERING 1000 South 104th Street, Suite 110 Omaha, NE 68147 (402) 391-0200		Office of Construction and Facilities Management U.S. Department of Veterans Affairs	
Project Title Second Floor Asbestos Location Plan		Project Title RENOVATE TOWER BUILDING 1		Project Number 438-18-102	
Stamp ARCHITECT/ENGINEER OF RECORD		Stamp ARCHITECT/ENGINEER OF RECORD		Building Number 1	
Revision: 04/11/2019 04/11/2019 04/11/2019 04/11/2019 04/11/2019		Approved: Project Director _____ _____ _____ _____ _____		Drawing Number HA102	
Location: Sioux Falls, SD 57105		Item Date: 04/20/19		Owner: AUC	

Asbestos Notes

1. Establish regulated area and remove 12" x 12" VFT and mastic, in accordance with Section 02 82 13.19.
2. Establish regulated area and remove Thermal System Insulation (TSI) covered pipe and fittings using glovebag abatement methods as required by Section 02 82 13.13. For sections of pipe to be demolished, wrap and cut methods may be used only if approved by the General Contractor.
3. Establish regulated area and remove, transite pipe in accordance with Section 02 82 12.31 Asbestos Transite Abatement, if required. Removal may be accomplished using wrap and cut methods. Glovebags may be used to contain fibers during manual demolition to establish sections for removal.
4. Establish regulated area and remove Thermal System Insulation (TSI) debris located in the below floor pipe chase in both Main and Tower areas in accordance with Section 02 82 11, Traditional Asbestos Abatement.
5. When glovebag methods are not feasible, use full containment and isolation procedures (Major Decontamination Areas) in accordance with Section 02 82 11, Traditional Asbestos Abatement.
6. Enclosed vertical pipe chases are present in the Tower. One is visible from the basement (00) level on the exterior corner of the stairwell. The other vertical chase is visible in Room 360 adjacent to the hall and the stairwell. These pipe chases may contain Asbestos Containing TSI. If TSI is found when the pipe chases are opened, the material may be assumed as ACM, or tested for asbestos content.



Summary Of Asbestos-Containing Materials (ACM)

DESCRIPTION	FRIABLE	EST. QTY.	HATCHING
12"x12" VINYL FLOOR TILE (VFT) AND MASTIC	NO*	108 SF	[Red X-Hatch]
VFT UNDER CARPET	NO*	1,049 SF	[Green Diagonal Hatch]

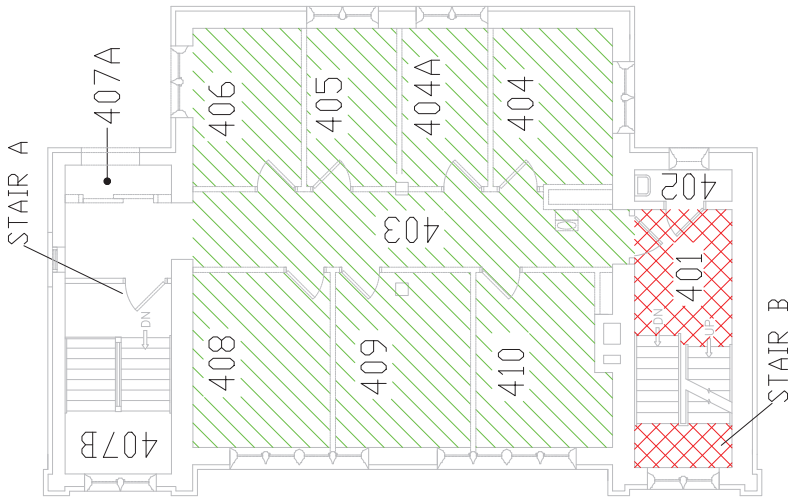
1 Building 1.03, West Wing Tower - ASBESTOS LOCATIONS
NOT TO SCALE



<p>CONSULTANT</p> <p>AMI ENVIRONMENTAL 1807 South 104th Street, Suite 110 Tomball, TX 77375 Tel: 281.291.0200</p>		<p>ARCHITECT/ENGINEER OF RECORD</p> <p>FARRIS ENGINEERING 10000 Katy Road, Suite 200 Houston, TX 77055 Tel: 281.492.1100</p>		<p>Office of Construction and Facilities Management U.S. Department of Veterans Affairs</p>		<p>Project Title Third Floor Asbestos Location Plan</p>		<p>Project Title RENOVATE TOWER BUILDING 1</p>		<p>Project Number 438-18-102</p>	
<p>Contract Documents (SIC, Supplemental CD) 04/11/2019</p> <p>Contract Documents (SIC, Supplemental CD) 04/11/2019</p> <p>Contract Documents (SIC, Supplemental CD) 02/02/2018</p> <p>Schematic Design (SD) 10/03/2018</p> <p>Revision:</p>		<p>Stamp</p>		<p>Approved: Project Director</p>		<p>Location: Sioux Falls, SD 57105</p>		<p>Item Date</p>		<p>Project Number 1</p>	
<p>STAIR A</p>		<p>STAIR B</p>		<p>Phase BID DOCUMENTS</p>		<p>Location Sioux Falls, SD 57105</p>		<p>Owner AUC</p>		<p>Drawing Number HA103</p>	

Asbestos Notes

1. Establish regulated area and remove 12" x 12" VFT and mastic, in accordance with Section 02 82 13.19.
2. Establish regulated area and remove Thermal System Insulation (TSI) covered pipe and fittings using glovebag abatement methods as required by Section 02 82 13.13. For sections of pipe to be demolished, wrap and cut methods may be used only if approved by the General Contractor.
3. Establish regulated area and remove, transite pipe in accordance with Section 02 82 12.31 Asbestos Transite Abatement, if required. Removal may be accomplished using wrap and cut methods. Glovebags may be used to contain fibers during manual demolition to establish sections for removal.
4. Establish regulated area and remove Thermal System Insulation (TSI) debris located in the below floor pipe chase in both Main and Tower areas in accordance with Section 02 82 11, Traditional Asbestos Abatement.
5. When glovebag methods are not feasible, use full containment and isolation procedures (Major Decontamination Areas) in accordance with Section 02 82 11, Traditional Asbestos Abatement.
6. Enclosed vertical pipe chases are present in the Tower. One is visible from the basement (00) level on the exterior corner of the stairwell. The other vertical chase is visible in Room 360 adjacent to the hall and the stairwell. These pipe chases may contain Asbestos Containing TSI. If TSI is found when the pipe chases are opened, the material may be assumed as ACM, or tested for asbestos content.



Summary Of Asbestos-Containing Materials (ACM)			
DESCRIPTION	FRIABLE	EST. QTY.	HATCHING
12"x12" VINYL FLOOR TILE (VFT) AND MASTIC	NO*	108 SF	X
VFT UNDER CARPET	NO*	1,053 SF	/

1 Building 1.04, West Wing Tower - ASBESTOS LOCATIONS
NOT TO SCALE

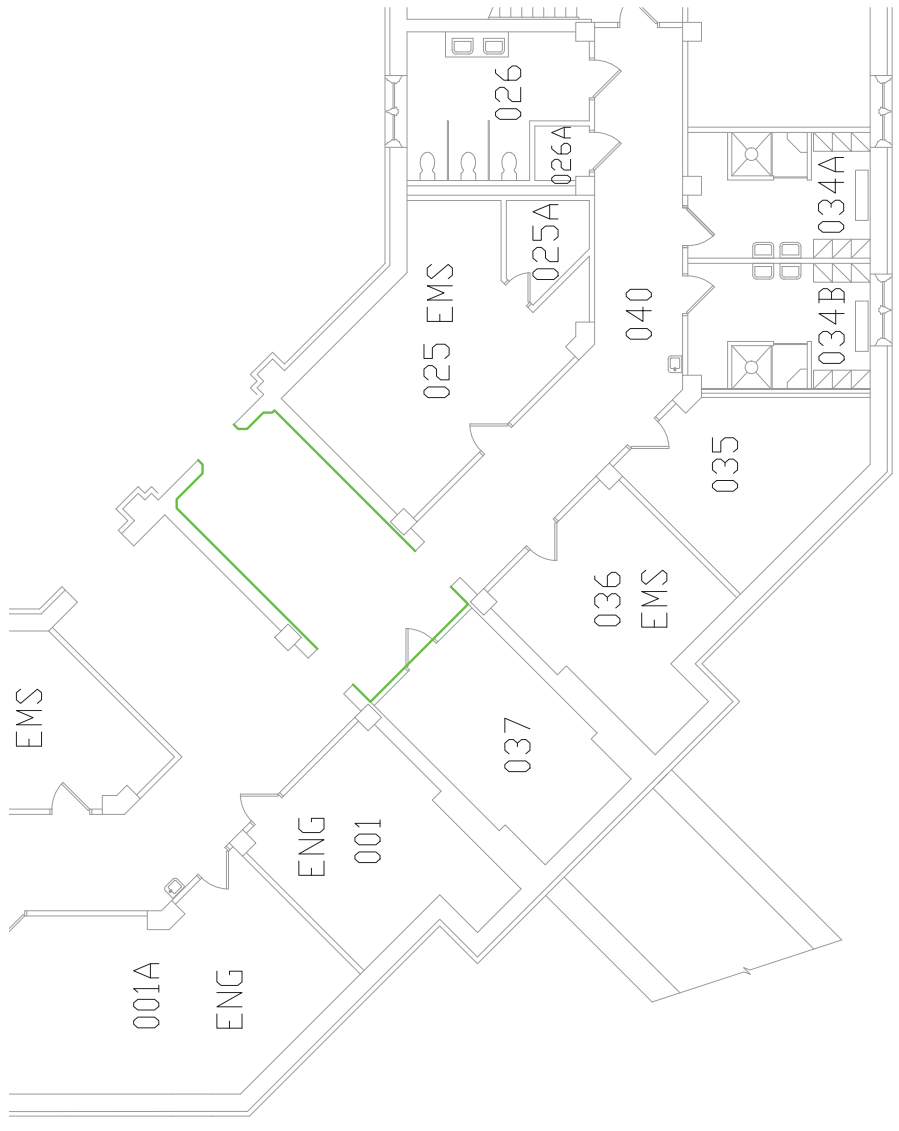


<p>CONSULTANT</p> <p>AMI ENVIRONMENTAL</p> <p>1805 South 104th Street, Suite 100 Tomball, Texas 77375 (281) 351-0200</p>	<p>ARCHITECT/ENGINEER OF RECORD</p> <p>FARRIS ENGINEERING</p> <p>10000 Katy Road, Suite 100 Houston, Texas 77025 (281) 492-1100</p>	<p>Office of Construction and Facilities Management</p> <p>VA U.S. Department of Veterans Affairs</p>	<p>Project Title Fourth Floor Asbestos Location Plan</p> <p>Project Number 438-18-102</p> <p>Building Number 1</p>	<p>Phase BID DOCUMENTS</p> <p>Project Title RENOVATE TOWER BUILDING 1</p> <p>Project Number 438-18-102</p> <p>Building Number 1</p>	<p>Revision:</p> <table border="1" style="width: 100%; border-collapse: collapse;"> <tr> <td style="width: 10%;">No.</td> <td style="width: 10%;">Date</td> <td style="width: 80%;">Description</td> </tr> <tr> <td>01</td> <td>12/11/2019</td> <td>Initial Design (CD)</td> </tr> <tr> <td>02</td> <td>12/11/2019</td> <td>Final Design (CD)</td> </tr> <tr> <td>03</td> <td>12/11/2019</td> <td>Design Development (CD)</td> </tr> <tr> <td>04</td> <td>12/11/2019</td> <td>Schematic Design (SD)</td> </tr> </table>	No.	Date	Description	01	12/11/2019	Initial Design (CD)	02	12/11/2019	Final Design (CD)	03	12/11/2019	Design Development (CD)	04	12/11/2019	Schematic Design (SD)
No.	Date	Description																		
01	12/11/2019	Initial Design (CD)																		
02	12/11/2019	Final Design (CD)																		
03	12/11/2019	Design Development (CD)																		
04	12/11/2019	Schematic Design (SD)																		
<p>Approved: Project Director</p>		<p>Location: Sioux Falls, SD 57105</p> <p>Issue Date: 02/28/20</p> <p>Checker: JAC</p> <p>Drawn: JAC</p>		<p>HA104</p>																

10 9 8 7 6 5 4 3 2 1

Lead Notes

1. LBP may be impacted on surfaces of painted block/brick walls for penetrations, expanded openings, new attachments or wall demolition. LBP dust must be controlled according to 29 CFR 1926.62. Perform cleanup and disposal of LBP dust and debris in accordance with Section 02 83 33.13.
2. If required, LBP removal from block/brick walls must be completed in accordance with Section 02 83 33.13.
3. Painted downspouts can be removed and disposed of or recycled with an approved recycling facility.



Summary Of Lead-Based Paint Materials			
DESCRIPTION	CONDITION	EST. QTY.	HATCHING
LEAD-BASED PAINT, CREAM, ON CONCRETE WALLS	GOOD	800 SF	

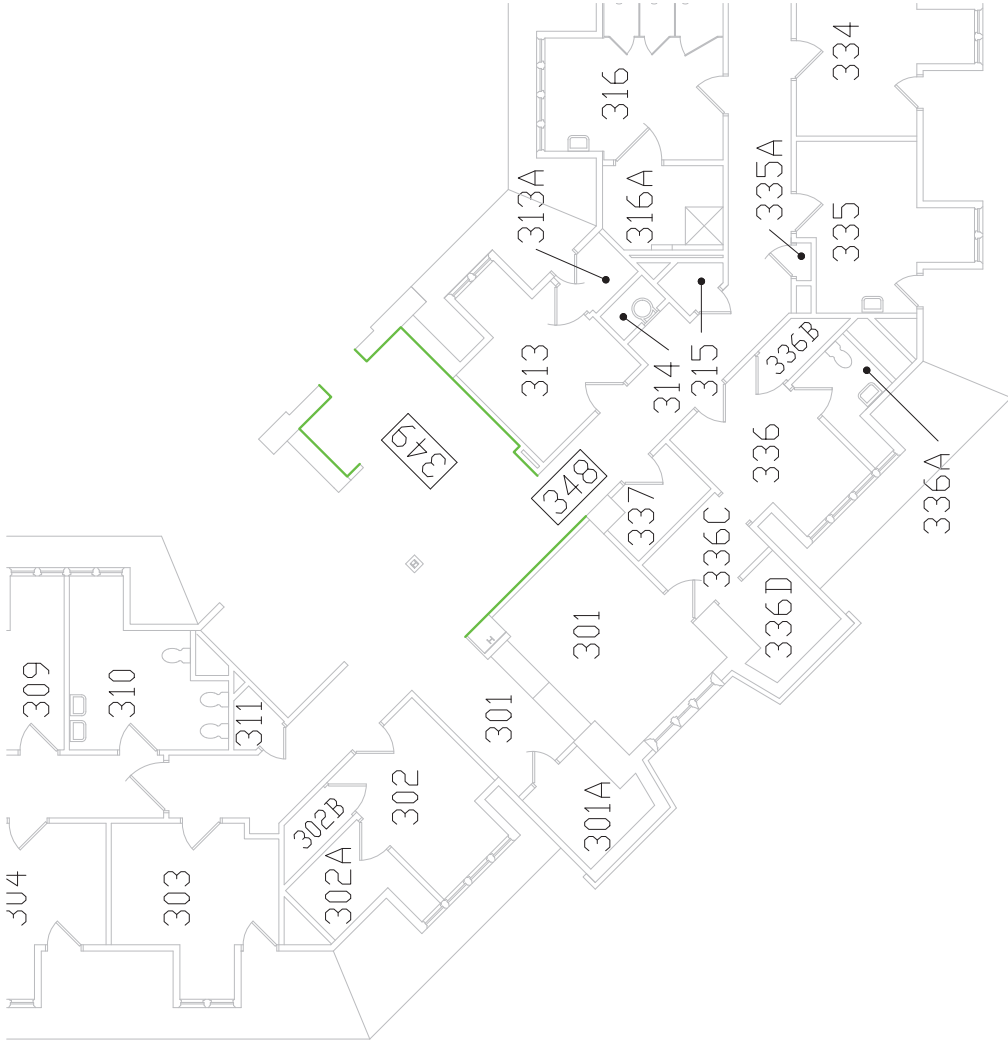
1 Building 1, 00, Center - LEAD-BASED PAINT LOCATIONS
NOT TO SCALE



CONSULTANT AMI ENVIRONMENTAL 8002 South 10th Street, Suite 100 Fort Worth, TX 76116 (817) 379-0001		ARCHITECT/ENGINEER OF RECORD GJH 3702 West 200th Street Overland Park, KS 66202 (913) 779-6661		ENGINEER OF RECORD FABRIC ENGINEERING 1000 West 10th Street Fort Worth, TX 76102 (817) 379-0001		STAMP U.S. Department of Veterans Affairs Office of Construction and Facilities Management Approved Project Director		Phase BID DOCUMENTS FULLY SPRINKLERED		Project File RENOVATE TOWER BUILDING 1 Project Number: 438-18-102 Revision Number: 1	
Contract Documents 50% Submittal (CD) 04/11/2019 Contract Documents 50% Submittal (CD) 07/10/2019 Design Development (DD) 10/10/2018 Schematic Design (SD) 02/21/2018 Revision:		Checked: JAC Drawn: JAC Review: RO		Location: Sioux Falls, SD 57105 Issue Date: 03/08/2019		Project Name: HA200		Project Number: 438-18-102 Revision Number: 1		Project Name: RENOVATE TOWER BUILDING 1 Project Number: 438-18-102 Revision Number: 1	

Lead Notes

- 1. LBP may be impacted on surfaces of painted block/brick walls for penetrations, expanded openings, new attachments or wall demolition. LBP dust must be controlled according to 29 CFR 1926.62. Perform cleanup and disposal of LBP dust and debris in accordance with Section 02 83 33.13.
- 2. If required, LBP removal from block/brick walls must be completed in accordance with Section 02 83 33.13.
- 3. Painted downspouts can be removed and disposed of or recycled with an approved recycling facility.



DESCRIPTION	CONDITION	EST. QTY.	HATCHING
LEAD-BASED PAINT, WHITE, ON SHEETROCK WALLS	GOOD	1,000 SF	

1 Building 1, 03, Center - LEAD-BASED PAINT LOCATIONS
NOT TO SCALE

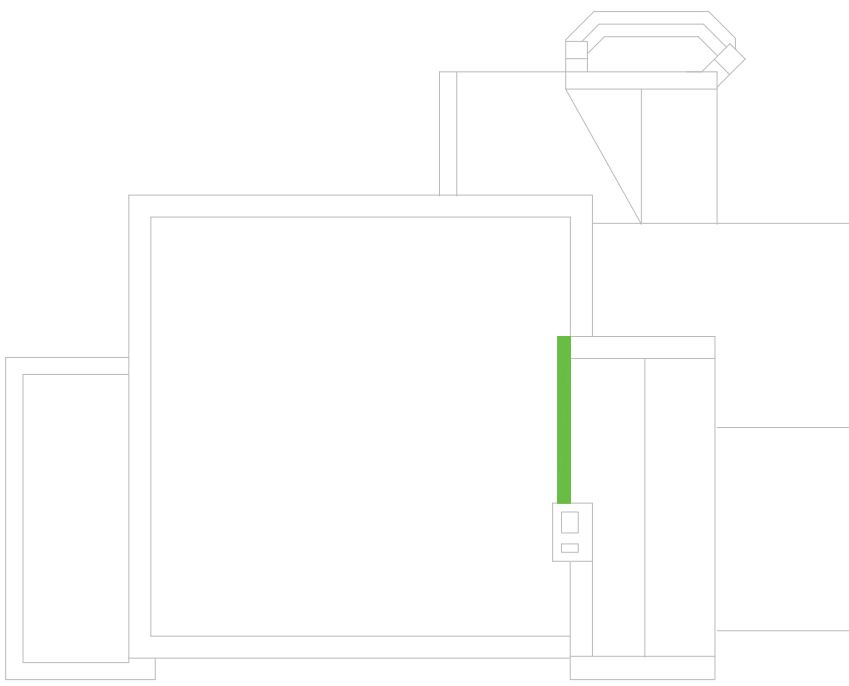
 CONSULTANT		 ARCHITECT/ENGINEER OF RECORD		 Office of Construction and Facilities Management U.S. Department of Veterans Affairs	
Contract Documents 556, Schematic (CD) 556-1, Schematic (CD) 556-2, Schematic (CD) 556-3, Schematic (CD) 556-4, Schematic (CD) 556-5, Schematic (CD) 556-6, Schematic (CD) 556-7, Schematic (CD) 556-8, Schematic (CD) 556-9, Schematic (CD) 556-10, Schematic (CD) 556-11, Schematic (CD) 556-12, Schematic (CD) 556-13, Schematic (CD) 556-14, Schematic (CD) 556-15, Schematic (CD) 556-16, Schematic (CD) 556-17, Schematic (CD) 556-18, Schematic (CD) 556-19, Schematic (CD) 556-20, Schematic (CD) 556-21, Schematic (CD) 556-22, Schematic (CD) 556-23, Schematic (CD) 556-24, Schematic (CD) 556-25, Schematic (CD) 556-26, Schematic (CD) 556-27, Schematic (CD) 556-28, Schematic (CD) 556-29, Schematic (CD) 556-30, Schematic (CD) 556-31, Schematic (CD) 556-32, Schematic (CD) 556-33, Schematic (CD) 556-34, Schematic (CD) 556-35, Schematic (CD) 556-36, Schematic (CD) 556-37, Schematic (CD) 556-38, Schematic (CD) 556-39, Schematic (CD) 556-40, Schematic (CD) 556-41, Schematic (CD) 556-42, Schematic (CD) 556-43, Schematic (CD) 556-44, Schematic (CD) 556-45, Schematic (CD) 556-46, Schematic (CD) 556-47, Schematic (CD) 556-48, Schematic (CD) 556-49, Schematic (CD) 556-50, Schematic (CD) 556-51, Schematic (CD) 556-52, Schematic (CD) 556-53, Schematic (CD) 556-54, Schematic (CD) 556-55, Schematic (CD) 556-56, Schematic (CD) 556-57, Schematic (CD) 556-58, Schematic (CD) 556-59, Schematic (CD) 556-60, Schematic (CD) 556-61, Schematic (CD) 556-62, Schematic (CD) 556-63, Schematic (CD) 556-64, Schematic (CD) 556-65, Schematic (CD) 556-66, Schematic (CD) 556-67, Schematic (CD) 556-68, Schematic (CD) 556-69, Schematic (CD) 556-70, Schematic (CD) 556-71, Schematic (CD) 556-72, Schematic (CD) 556-73, Schematic (CD) 556-74, Schematic (CD) 556-75, Schematic (CD) 556-76, Schematic (CD) 556-77, Schematic (CD) 556-78, Schematic (CD) 556-79, Schematic (CD) 556-80, Schematic (CD) 556-81, Schematic (CD) 556-82, Schematic (CD) 556-83, Schematic (CD) 556-84, Schematic (CD) 556-85, Schematic (CD) 556-86, Schematic (CD) 556-87, Schematic (CD) 556-88, Schematic (CD) 556-89, Schematic (CD) 556-90, Schematic (CD) 556-91, Schematic (CD) 556-92, Schematic (CD) 556-93, Schematic (CD) 556-94, Schematic (CD) 556-95, Schematic (CD) 556-96, Schematic (CD) 556-97, Schematic (CD) 556-98, Schematic (CD) 556-99, Schematic (CD) 556-100, Schematic (CD)		 FARRIS ENGINEERING ARCHITECT/ENGINEER OF RECORD		Project Name RENOVATE TOWER BUILDING 1	
Revision:		Stamp		Project Number 438-B-102	
Date:		Stamp		Building Number 1	
Date:		Stamp		Drawing Number HA203	
Date:		Stamp		Location Sioux Falls, SD 57105	
Date:		Stamp		Sheet Title Lead-Based Paint Locations	
Date:		Stamp		Drawing Date 10/20/19	
Date:		Stamp		Drawing Date 10/20/19	
Date:		Stamp		Drawing Date 10/20/19	
Date:		Stamp		Drawing Date 10/20/19	



10 9 8 7 6 5 4 3 2 1

Lead Notes

- 1. LBP may be impacted on surfaces of painted block/brick walls for penetrations, expanded openings, new attachments or wall demolition. LBP dust must be controlled according to 29 CFR 1926.62. Perform cleanup and disposal of LBP dust and debris in accordance with Section 02 83 33.13.
- 2. If required, LBP removal from block/brick walls must be completed in accordance with Section 02 83 33.13.
- 3. Painted downspouts can be removed and disposed of or recycled with an approved recycling facility.

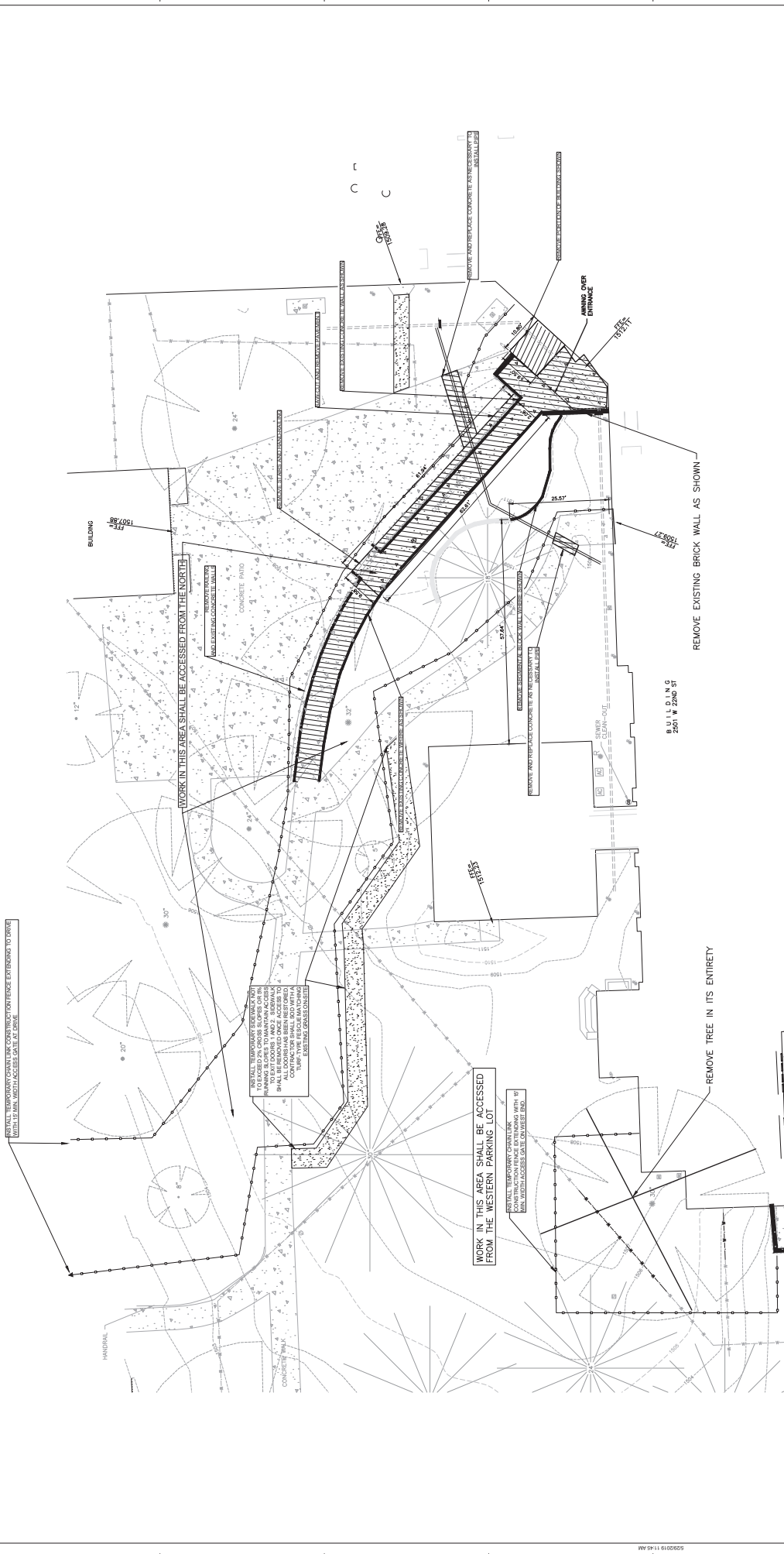


Summary Of Lead-Based Paint Materials

DESCRIPTION	CONDITION	EST. QTY.	HATCHING
LEAD-BASED PAINT, BROWN ON GUTTER/DOWNSPOUT	FAIR	40 LF	[Green Hatch]

1 Building 1, Tower Roof - LEAD-BASED PAINT LOCATIONS
NOT TO SCALE

<table border="1"> <tr><td>Contract Documents 50% Submittal (SD)</td><td>04/11/2019</td></tr> <tr><td>Contract Documents 50% Submittal (SD)</td><td>02/10/2019</td></tr> <tr><td>Design Development (DD)</td><td>12/10/2018</td></tr> <tr><td>Schematic Design (SD)</td><td>08/20/2018</td></tr> <tr><td>Pre-design</td><td>07/20/2018</td></tr> <tr><td>Revisions:</td><td>04/01/2019</td></tr> </table>	Contract Documents 50% Submittal (SD)	04/11/2019	Contract Documents 50% Submittal (SD)	02/10/2019	Design Development (DD)	12/10/2018	Schematic Design (SD)	08/20/2018	Pre-design	07/20/2018	Revisions:	04/01/2019	<p>CONSULTANT</p> <p>AMI ENVIRONMENTAL</p> <p>8002 South 31st Street, Suite 100 Tampa, FL 33629 407.279.3000</p>	<p>ARCHITECT/ENGINEER OF RECORD</p> <p>CJH Cain Johnson Hines</p> <p>3702 West 20th Street Tampa, FL 33606 813.279.6541</p>	<p>ARCHITECT/ENGINEER OF RECORD</p> <p>FABRIS ENGINEERING FABRIS ENGINEERING</p> <p>1001 West 10th Street Tampa, FL 33606 813.279.6541</p>	<p>Office of Construction and Facilities Management</p> <p>U.S. Department of Veterans Affairs</p>	<p>Primary File Roof Lead-Based Paint Location Plan</p> <p>Approved Project Director</p>	<p>Project File RENOVATE TOWER BUILDING 1</p> <p>Project Number 438-18-102</p>	<p>Revision Number 1</p> <p>Stamp</p>	<p>Project Name RENOVATE TOWER BUILDING 1</p> <p>Location Sioux Falls, SD 57105</p> <p>Issue Date 03/08/2019</p>	<p>Checked RO</p> <p>Drawn JAC</p>	<p>Project Number HA204</p>
Contract Documents 50% Submittal (SD)	04/11/2019																					
Contract Documents 50% Submittal (SD)	02/10/2019																					
Design Development (DD)	12/10/2018																					
Schematic Design (SD)	08/20/2018																					
Pre-design	07/20/2018																					
Revisions:	04/01/2019																					
BID DOCUMENTS						FULLY SPRINKLERED																



GENERAL DEMOLITION NOTES

- THE CONTRACTOR SHALL REMOVE AND DEMOLISH WORK TO THAT SPECIFICALLY CALLED FOR IN THE DOCUMENTS. ANY OTHER WORK TO BE DEMOLISHED SHALL BE REVERTED TO THE ORIGINAL DESIGN.
- ALL DEMOLITION OPERATIONS SHALL BE PERFORMED IN ACCORDANCE WITH THE DESIGN INTENT AND SHALL BE REVERTED TO THE ORIGINAL DESIGN.
- ALL DEMOLITION OPERATIONS SHALL BE PERFORMED IN ACCORDANCE WITH THE DESIGN INTENT AND SHALL BE REVERTED TO THE ORIGINAL DESIGN.
- ALL DEMOLITION OPERATIONS SHALL BE PERFORMED IN ACCORDANCE WITH THE DESIGN INTENT AND SHALL BE REVERTED TO THE ORIGINAL DESIGN.
- ALL DEMOLITION OPERATIONS SHALL BE PERFORMED IN ACCORDANCE WITH THE DESIGN INTENT AND SHALL BE REVERTED TO THE ORIGINAL DESIGN.
- ALL DEMOLITION OPERATIONS SHALL BE PERFORMED IN ACCORDANCE WITH THE DESIGN INTENT AND SHALL BE REVERTED TO THE ORIGINAL DESIGN.
- ALL DEMOLITION OPERATIONS SHALL BE PERFORMED IN ACCORDANCE WITH THE DESIGN INTENT AND SHALL BE REVERTED TO THE ORIGINAL DESIGN.
- ALL DEMOLITION OPERATIONS SHALL BE PERFORMED IN ACCORDANCE WITH THE DESIGN INTENT AND SHALL BE REVERTED TO THE ORIGINAL DESIGN.
- ALL DEMOLITION OPERATIONS SHALL BE PERFORMED IN ACCORDANCE WITH THE DESIGN INTENT AND SHALL BE REVERTED TO THE ORIGINAL DESIGN.
- ALL DEMOLITION OPERATIONS SHALL BE PERFORMED IN ACCORDANCE WITH THE DESIGN INTENT AND SHALL BE REVERTED TO THE ORIGINAL DESIGN.

SITE DEMOLITION NOTES

- THE CONTRACTOR SHALL REMOVE AND ALL EXISTING SERVICES WHICH IS INDICATED FROM THE EXISTING BUILDING SET. THIS INCLUDES ALL UTILITIES AND SERVICES WHICH ARE SHOWN ON THE EXISTING BUILDING SET.
- ALL EXISTING SERVICES WHICH ARE SHOWN ON THE EXISTING BUILDING SET SHALL BE REMOVED AND DEMOLISHED.
- ALL EXISTING SERVICES WHICH ARE SHOWN ON THE EXISTING BUILDING SET SHALL BE REMOVED AND DEMOLISHED.
- ALL EXISTING SERVICES WHICH ARE SHOWN ON THE EXISTING BUILDING SET SHALL BE REMOVED AND DEMOLISHED.
- ALL EXISTING SERVICES WHICH ARE SHOWN ON THE EXISTING BUILDING SET SHALL BE REMOVED AND DEMOLISHED.
- ALL EXISTING SERVICES WHICH ARE SHOWN ON THE EXISTING BUILDING SET SHALL BE REMOVED AND DEMOLISHED.
- ALL EXISTING SERVICES WHICH ARE SHOWN ON THE EXISTING BUILDING SET SHALL BE REMOVED AND DEMOLISHED.
- ALL EXISTING SERVICES WHICH ARE SHOWN ON THE EXISTING BUILDING SET SHALL BE REMOVED AND DEMOLISHED.
- ALL EXISTING SERVICES WHICH ARE SHOWN ON THE EXISTING BUILDING SET SHALL BE REMOVED AND DEMOLISHED.
- ALL EXISTING SERVICES WHICH ARE SHOWN ON THE EXISTING BUILDING SET SHALL BE REMOVED AND DEMOLISHED.

LEGEND

CONCRETE FOUND	W
CONCRETE SLAB	E
CONCRETE WALL	S
CONCRETE COLUMN	C
CONCRETE BEAM	B
CONCRETE FINISH	F
CONCRETE PAINT	P
CONCRETE GROUT	G
CONCRETE JOINT	J
CONCRETE REINFORCEMENT	R
CONCRETE REINFORCEMENT BAR	B
CONCRETE REINFORCEMENT WIRE	W
CONCRETE REINFORCEMENT MESH	M
CONCRETE REINFORCEMENT STRAP	S
CONCRETE REINFORCEMENT LIFT	L
CONCRETE REINFORCEMENT WITH LIGHT	W/L
CONCRETE REINFORCEMENT WITH ELECTRIC	E
CONCRETE REINFORCEMENT WITH TELEPHONE	T
CONCRETE REINFORCEMENT WITH GAS	G
CONCRETE REINFORCEMENT WITH WATER	W
CONCRETE REINFORCEMENT WITH FIBER	F
CONCRETE REINFORCEMENT WITH OTHER	O
CONCRETE REINFORCEMENT WITH UNKNOWN	U
CONCRETE REINFORCEMENT WITH UNCLASSIFIED	UN

CONSULTANT

TDS
TERRACON CONSULTANTS & DESIGN, INC.
100336 Old Mill Rd. Columbia, NE 68244
402.330.8880
www.tdsco.com

ARCHITECT/ENGINEER OF RECORD
CLH
CRAWLEY LITTLE & HARRISON
2002 L Street, NE
Lincoln, NE 68503

STAMP
Professional Engineer
No. 1100000000
State of Nebraska
Civil Engineering

Office of Construction and Facilities Management
Approved Project Director
U.S. Department of Veterans Affairs

BID DOCUMENTS
RENOVATE TOWER BUILDING 1

FULLY SPRINKLERED

Project No. 438-18-102
Revision Number 1
Drawing Number C1.1
Sheet Date 04/06/2019
Checker DSD
Drawn BBD

LEGEND

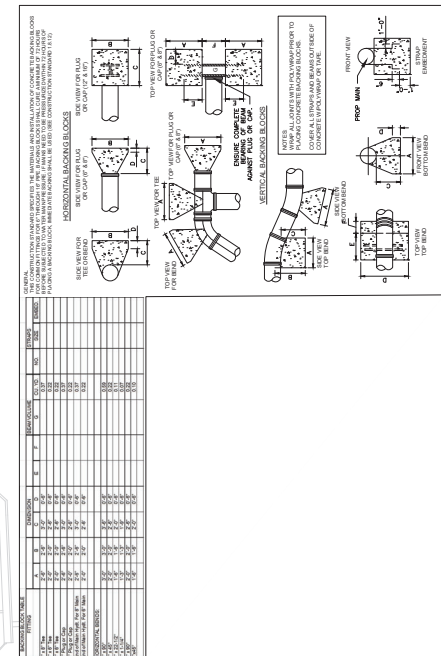
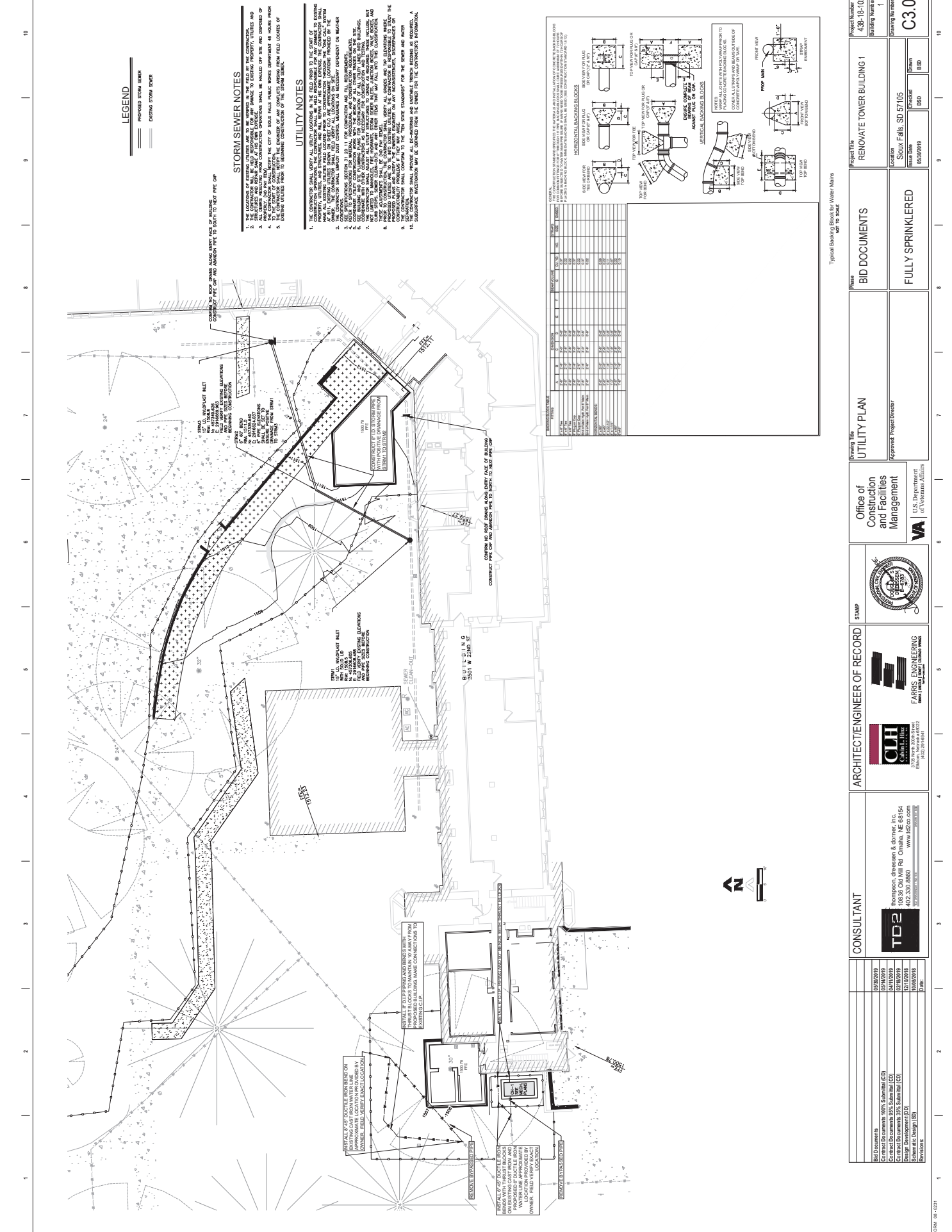
	PROPOSED STORM SEWER
	EXISTING STORM SEWER

STORM SEWER NOTES

1. THE CONTRACTOR SHALL BE RESPONSIBLE FOR OBTAINING ALL NECESSARY PERMITS AND APPROVALS FROM THE CITY OF SIOUX FALLS PUBLIC WORKS DEPARTMENT AS WELL AS THE STATE OF SOUTH DAKOTA.
2. THE CONTRACTOR SHALL BE RESPONSIBLE FOR OBTAINING ALL NECESSARY PERMITS AND APPROVALS FROM THE CITY OF SIOUX FALLS PUBLIC WORKS DEPARTMENT AS WELL AS THE STATE OF SOUTH DAKOTA.
3. ALL EXISTING UTILITIES SHALL BE MAINTAINED AND PROTECTED THROUGHOUT THE CONSTRUCTION PERIOD.
4. THE CONTRACTOR SHALL BE RESPONSIBLE FOR OBTAINING ALL NECESSARY PERMITS AND APPROVALS FROM THE CITY OF SIOUX FALLS PUBLIC WORKS DEPARTMENT AS WELL AS THE STATE OF SOUTH DAKOTA.
5. EXISTING UTILITIES SHALL BE MAINTAINED AND PROTECTED THROUGHOUT THE CONSTRUCTION PERIOD.

UTILITY NOTES

1. THE CONTRACTOR SHALL BE RESPONSIBLE FOR OBTAINING ALL NECESSARY PERMITS AND APPROVALS FROM THE CITY OF SIOUX FALLS PUBLIC WORKS DEPARTMENT AS WELL AS THE STATE OF SOUTH DAKOTA.
2. THE CONTRACTOR SHALL BE RESPONSIBLE FOR OBTAINING ALL NECESSARY PERMITS AND APPROVALS FROM THE CITY OF SIOUX FALLS PUBLIC WORKS DEPARTMENT AS WELL AS THE STATE OF SOUTH DAKOTA.
3. THE CONTRACTOR SHALL BE RESPONSIBLE FOR OBTAINING ALL NECESSARY PERMITS AND APPROVALS FROM THE CITY OF SIOUX FALLS PUBLIC WORKS DEPARTMENT AS WELL AS THE STATE OF SOUTH DAKOTA.
4. THE CONTRACTOR SHALL BE RESPONSIBLE FOR OBTAINING ALL NECESSARY PERMITS AND APPROVALS FROM THE CITY OF SIOUX FALLS PUBLIC WORKS DEPARTMENT AS WELL AS THE STATE OF SOUTH DAKOTA.
5. THE CONTRACTOR SHALL BE RESPONSIBLE FOR OBTAINING ALL NECESSARY PERMITS AND APPROVALS FROM THE CITY OF SIOUX FALLS PUBLIC WORKS DEPARTMENT AS WELL AS THE STATE OF SOUTH DAKOTA.



NO.	DESCRIPTION	QUANTITY	UNIT	PRICE	TOTAL
1	18" DIA. CONCRETE MANHOLE	1	EA	1,200.00	1,200.00
2	18" DIA. CONCRETE CATCH BASIN	1	EA	1,500.00	1,500.00
3	18" DIA. CONCRETE MANHOLE	1	EA	1,200.00	1,200.00
4	18" DIA. CONCRETE CATCH BASIN	1	EA	1,500.00	1,500.00
5	18" DIA. CONCRETE MANHOLE	1	EA	1,200.00	1,200.00
6	18" DIA. CONCRETE CATCH BASIN	1	EA	1,500.00	1,500.00
7	18" DIA. CONCRETE MANHOLE	1	EA	1,200.00	1,200.00
8	18" DIA. CONCRETE CATCH BASIN	1	EA	1,500.00	1,500.00
9	18" DIA. CONCRETE MANHOLE	1	EA	1,200.00	1,200.00
10	18" DIA. CONCRETE CATCH BASIN	1	EA	1,500.00	1,500.00

Typical Block-in-Block Water Main NOT TO SCALE

PROJECT NO. 438-18-102	PROJECT NAME RENOVATE TOWER BUILDING 1	DATE 04/03/2019	SCALE AS SHOWN
ISSUED FOR C3.0	ISSUED BY DSD	ISSUED DATE 04/03/2019	ISSUED BY DSD
PROJECT NO. 438-18-102	PROJECT NAME RENOVATE TOWER BUILDING 1	DATE 04/03/2019	SCALE AS SHOWN
ISSUED FOR C3.0	ISSUED BY DSD	ISSUED DATE 04/03/2019	ISSUED BY DSD

ARCHITECT/ENGINEER OF RECORD

 CLH CONSULTANTS, INC.
 402.330.8880
 www.clhinc.com

CONSULTANT

 TDS CONSULTANTS, INC.
 100336 04th St NE
 Omaha, NE 68154
 402.330.8880
 www.tdsinc.com

OFFICE OF CONSTRUCTION AND FACILITIES MANAGEMENT

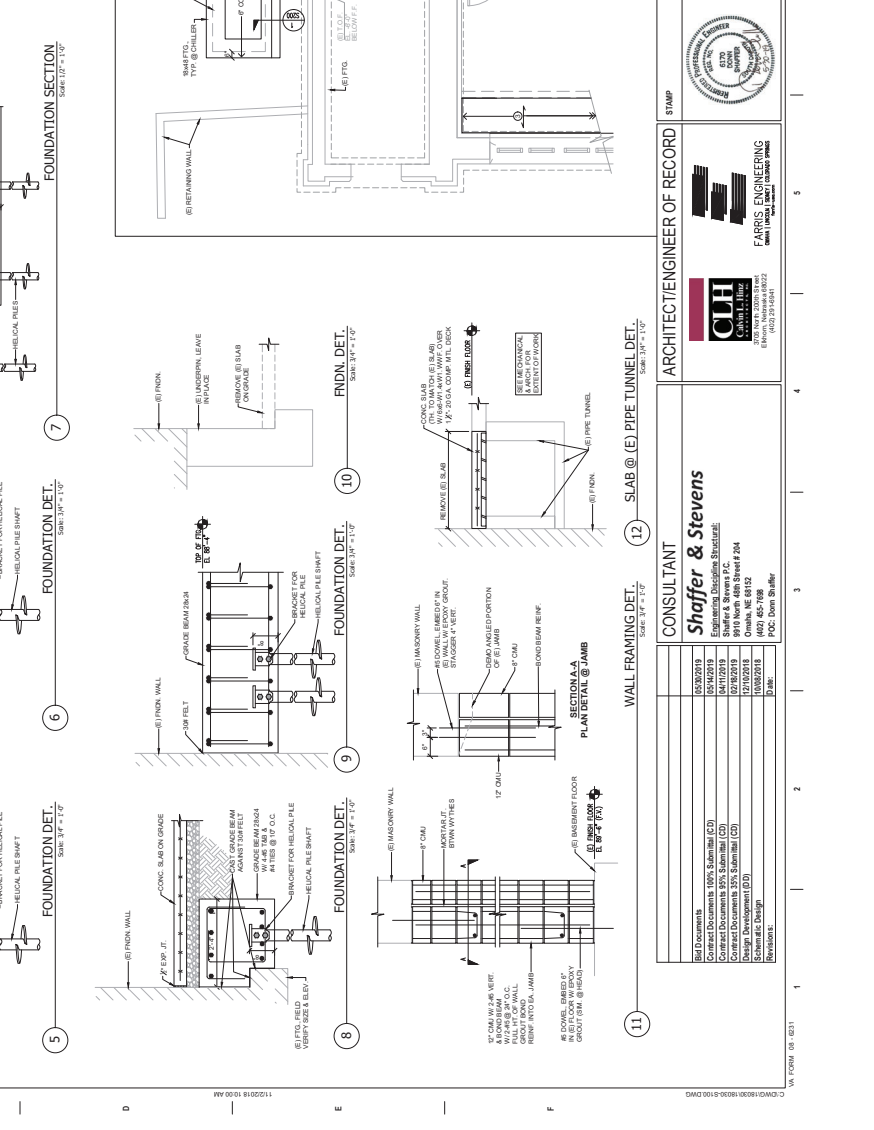
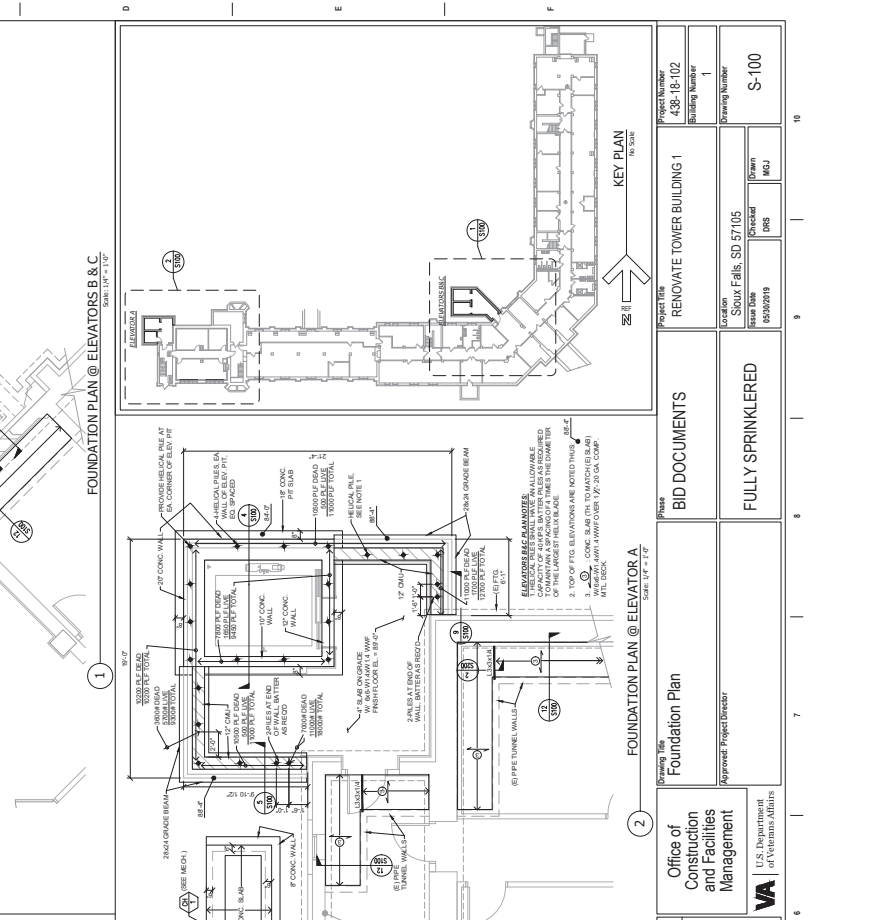
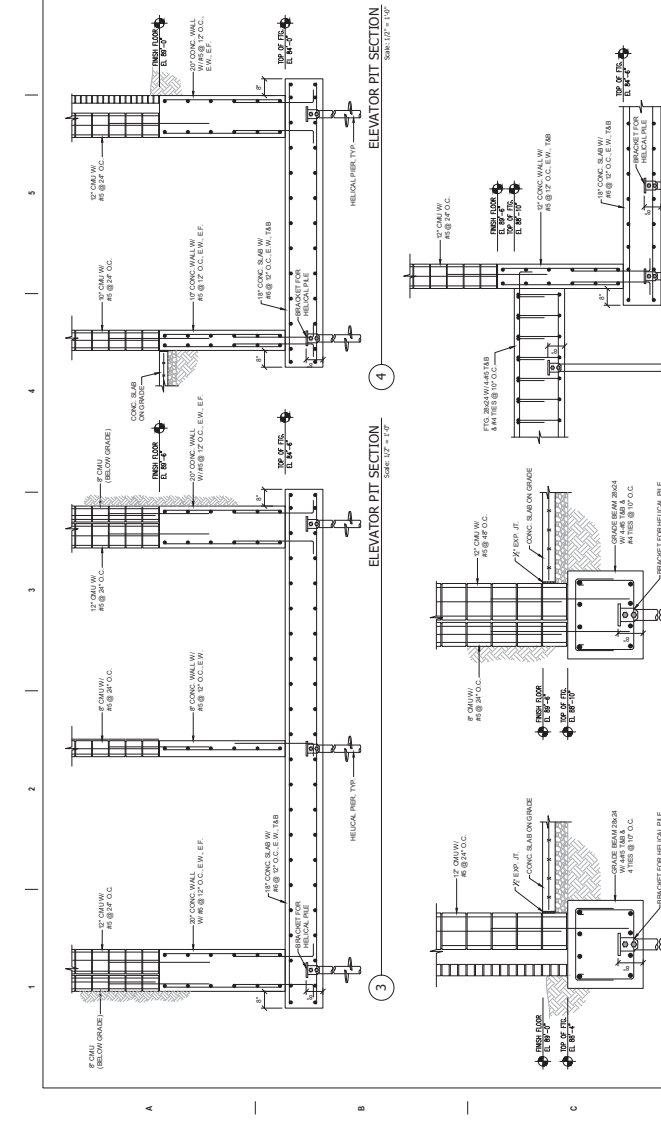
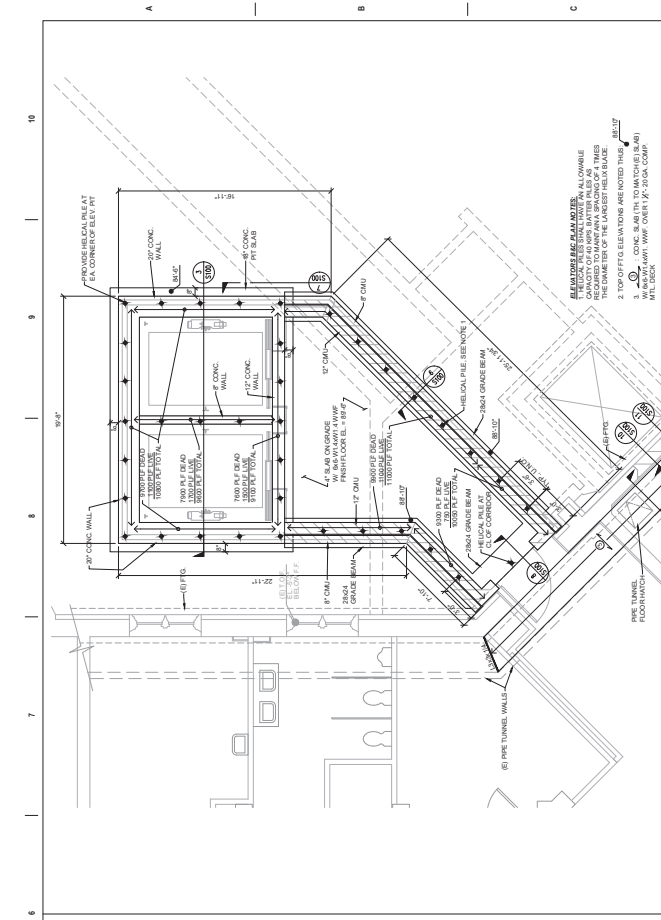
 U.S. Department of Veterans Affairs

STAMP

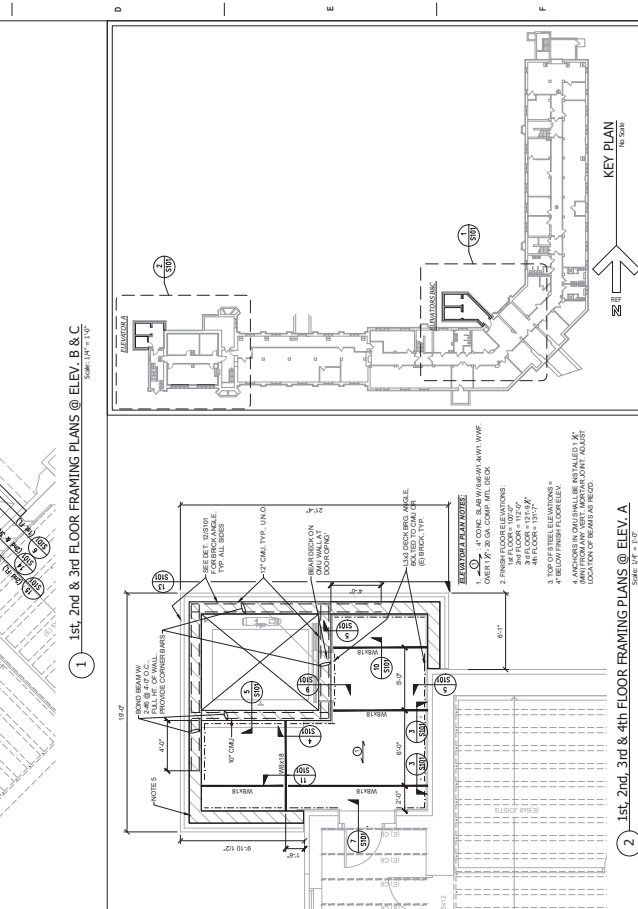
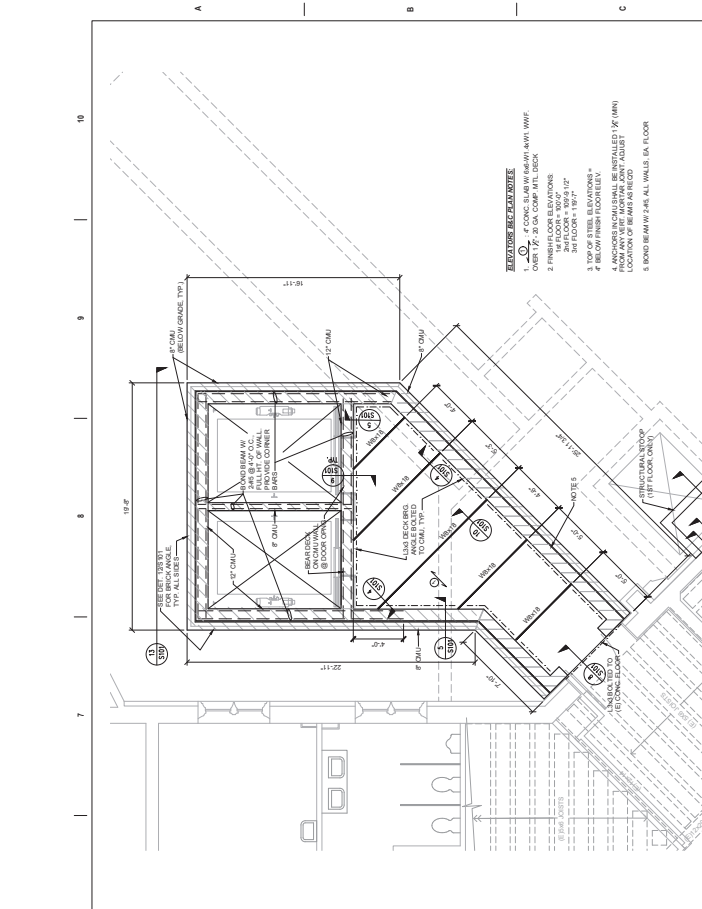
BID DOCUMENTS

FULLY SPRINKLERED

10
9
8
7
6
5
4
3
2
1



<p>PROJECT NO. 435-18-102</p> <p>Sheet Number 1</p> <p>Drawing Number S-100</p>	<p>PROJECT RENOVATE TOWER BUILDING 1</p> <p>DATE 03/09/19</p> <p>CHECKED [Signature]</p> <p>DESIGNED [Signature]</p>	<p>Office of Construction and Facilities Management</p> <p>U.S. Department of Veterans Affairs</p>	<p>ARCHITECT/ENGINEER OF RECORD</p> <p>CLH CONSULTANTS</p> <p>1000 N. 17th Street, Suite 200 Ocala, FL 34471 (352) 237-0001</p>	<p>CONSULTANT</p> <p>Shaffer & Stevens</p> <p>Engineers, Architects, Surveyors, Planners & Environmental Scientists 1000 N. 17th Street, Suite 200 Ocala, FL 34471 (352) 455-1988 P.O. Box 2186</p>	<p>Bid Documents 1000 Submittal (CD)</p> <p>Contract Documents 1000 Submittal (CD)</p> <p>Covered Documents 1000 Submittal (CD)</p> <p>Design Development (DD)</p> <p>Schematic Design</p>
---	--	--	---	---	--



PROJECT: RENOVATE TOWER BUILDING 1

PROJECT NUMBER: 638-18-102

ISSUE: S-101

DATE: 04/30/2019

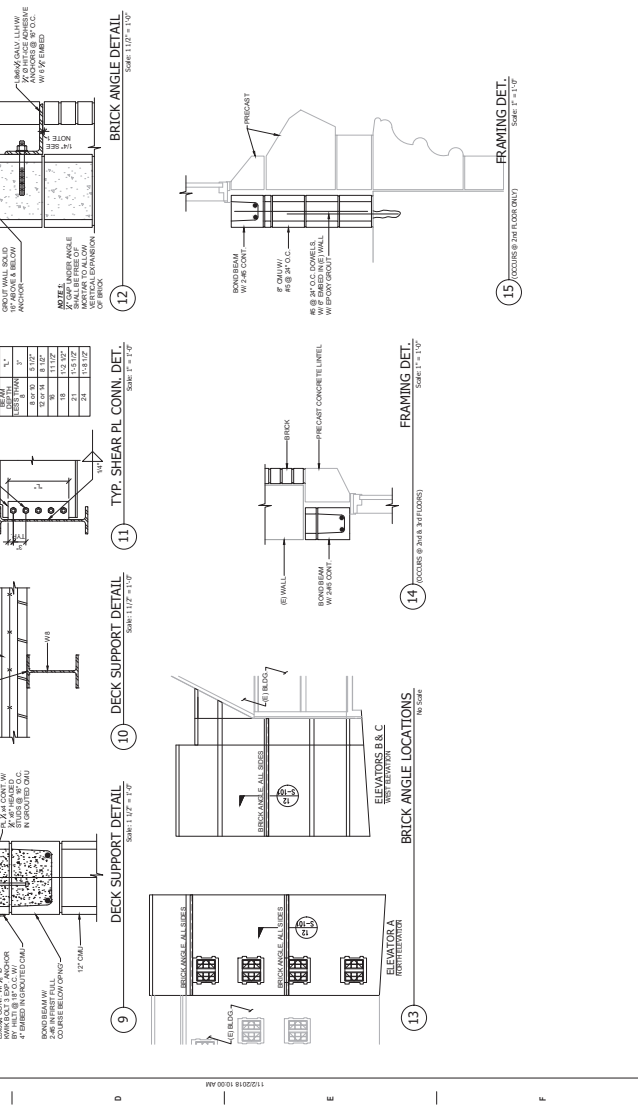
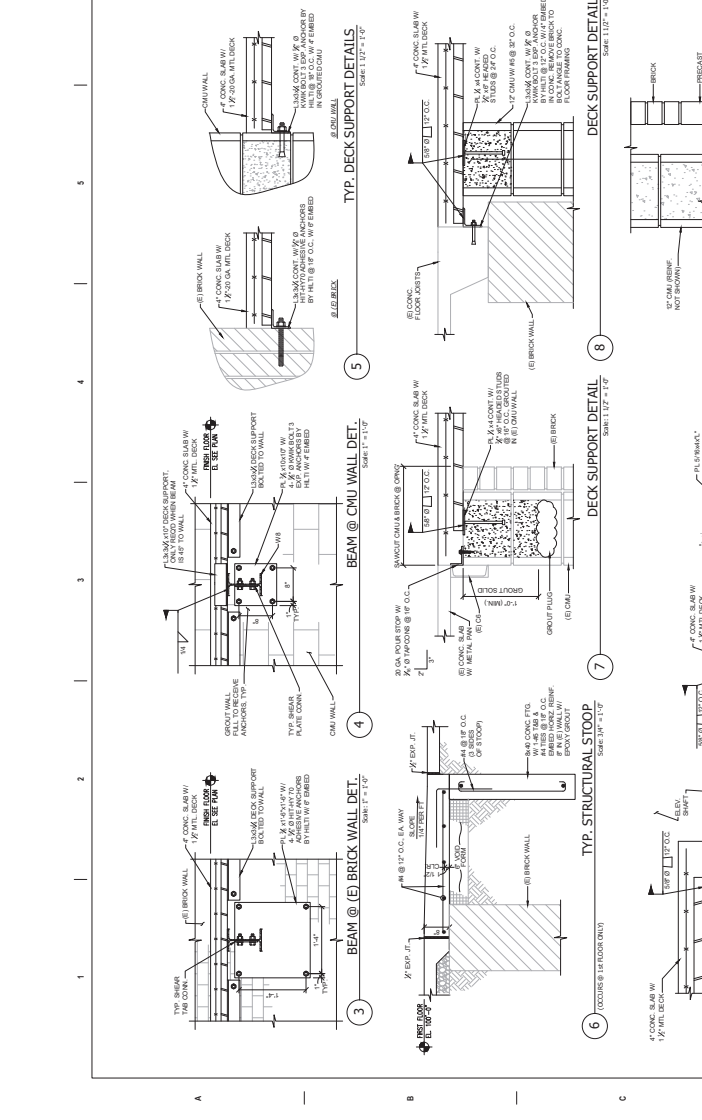
BY: [Signature]

CHECKED: [Signature]

APPROVED: [Signature]

SCALE: 1/4" = 1'-0"

KEY PLAN: [Diagram]



CONSULTANT: Shaffer & Stevens

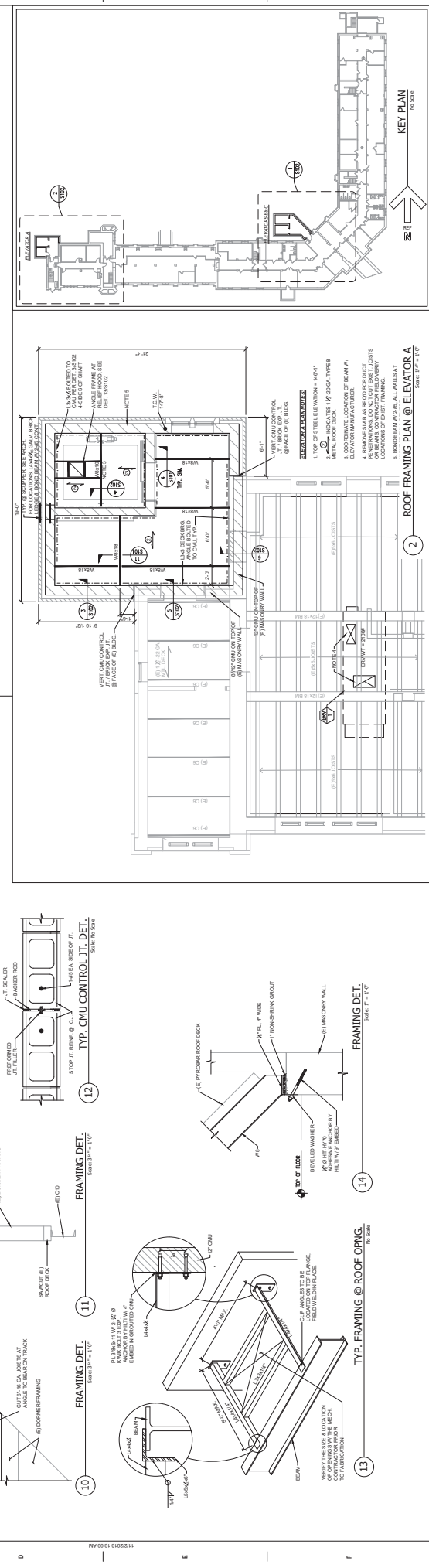
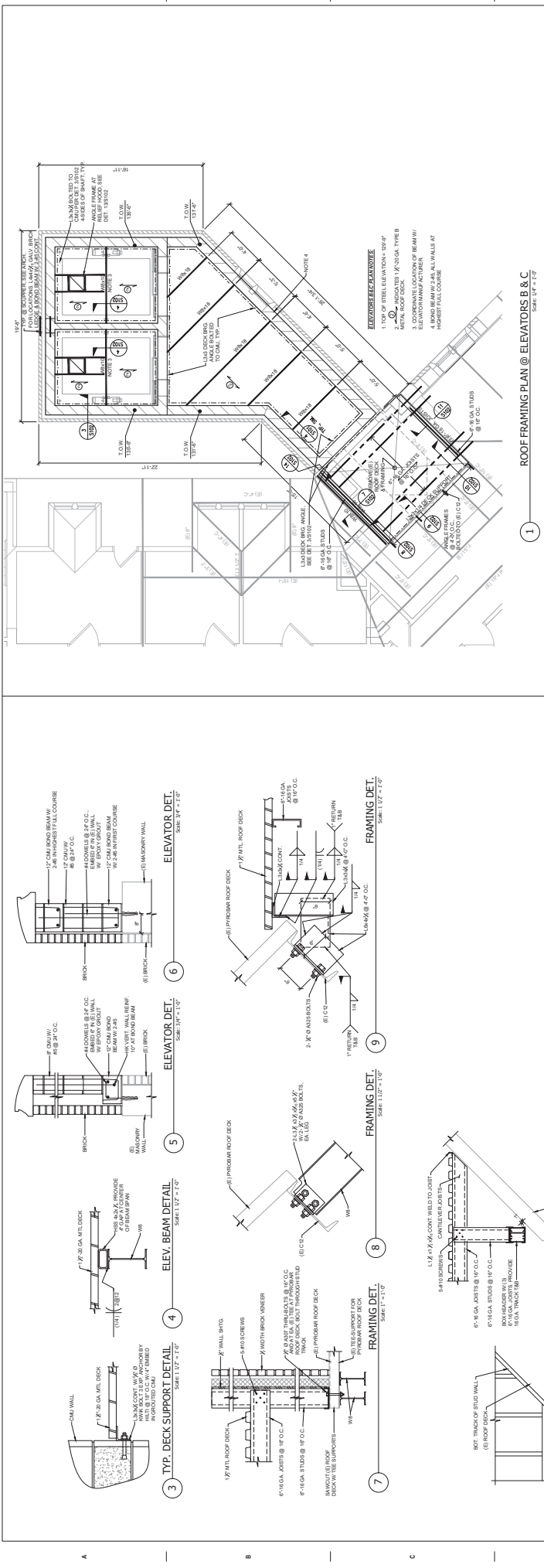
ARCHITECT/ENGINEER OF RECORD: PARKS ENGINEERING

STAMP: [Professional Seal]

Office of Construction and Facilities Management

U.S. Department of Veterans Affairs

VA FORM 08-1031



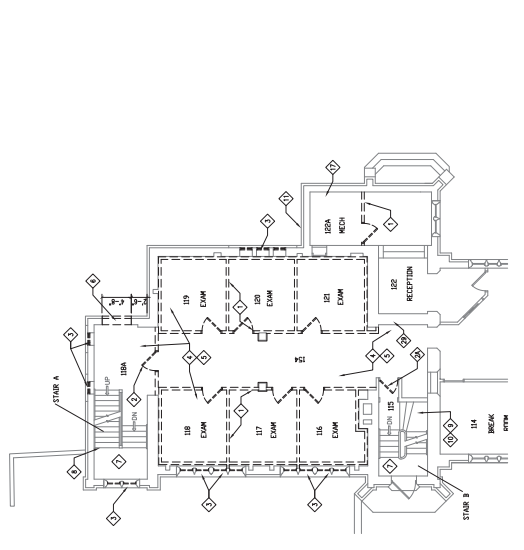
Project Name: RENOVATE TOWER BUILDING 1		Project Number: 433-19-102	Sheet Number: 1																		
Phase: BID DOCUMENTS		Issue Date: 03/20/2019	Checked: DBS																		
Office of Construction and Facilities Management		U.S. Department of Veterans Affairs																			
Approval: Project Director		U.S. Department of Veterans Affairs																			
Architect/Engineer of Record: Shaffer & Stevens		<table border="1"> <tr> <th>Sheet</th> <th>Revision</th> <th>Description</th> </tr> <tr> <td>03000001B</td> <td>001</td> <td>ISSUE FOR BIDDING</td> </tr> <tr> <td>03000001B</td> <td>002</td> <td>REVISED PER COMMENTS</td> </tr> <tr> <td>03000001B</td> <td>003</td> <td>REVISED PER COMMENTS</td> </tr> <tr> <td>03000001B</td> <td>004</td> <td>REVISED PER COMMENTS</td> </tr> <tr> <td>03000001B</td> <td>005</td> <td>REVISED PER COMMENTS</td> </tr> </table>		Sheet	Revision	Description	03000001B	001	ISSUE FOR BIDDING	03000001B	002	REVISED PER COMMENTS	03000001B	003	REVISED PER COMMENTS	03000001B	004	REVISED PER COMMENTS	03000001B	005	REVISED PER COMMENTS
Sheet	Revision	Description																			
03000001B	001	ISSUE FOR BIDDING																			
03000001B	002	REVISED PER COMMENTS																			
03000001B	003	REVISED PER COMMENTS																			
03000001B	004	REVISED PER COMMENTS																			
03000001B	005	REVISED PER COMMENTS																			
CONSULTANT: Shaffer & Stevens		<table border="1"> <tr> <td>03000001B</td> <td>001</td> <td>ISSUE FOR BIDDING</td> </tr> <tr> <td>03000001B</td> <td>002</td> <td>REVISED PER COMMENTS</td> </tr> <tr> <td>03000001B</td> <td>003</td> <td>REVISED PER COMMENTS</td> </tr> <tr> <td>03000001B</td> <td>004</td> <td>REVISED PER COMMENTS</td> </tr> <tr> <td>03000001B</td> <td>005</td> <td>REVISED PER COMMENTS</td> </tr> </table>		03000001B	001	ISSUE FOR BIDDING	03000001B	002	REVISED PER COMMENTS	03000001B	003	REVISED PER COMMENTS	03000001B	004	REVISED PER COMMENTS	03000001B	005	REVISED PER COMMENTS			
03000001B	001	ISSUE FOR BIDDING																			
03000001B	002	REVISED PER COMMENTS																			
03000001B	003	REVISED PER COMMENTS																			
03000001B	004	REVISED PER COMMENTS																			
03000001B	005	REVISED PER COMMENTS																			
ARCHITECT/ENGINEER OF RECORD: CLH CONSULTANTS, PLLC		<table border="1"> <tr> <td>03000001B</td> <td>001</td> <td>ISSUE FOR BIDDING</td> </tr> <tr> <td>03000001B</td> <td>002</td> <td>REVISED PER COMMENTS</td> </tr> <tr> <td>03000001B</td> <td>003</td> <td>REVISED PER COMMENTS</td> </tr> <tr> <td>03000001B</td> <td>004</td> <td>REVISED PER COMMENTS</td> </tr> <tr> <td>03000001B</td> <td>005</td> <td>REVISED PER COMMENTS</td> </tr> </table>		03000001B	001	ISSUE FOR BIDDING	03000001B	002	REVISED PER COMMENTS	03000001B	003	REVISED PER COMMENTS	03000001B	004	REVISED PER COMMENTS	03000001B	005	REVISED PER COMMENTS			
03000001B	001	ISSUE FOR BIDDING																			
03000001B	002	REVISED PER COMMENTS																			
03000001B	003	REVISED PER COMMENTS																			
03000001B	004	REVISED PER COMMENTS																			
03000001B	005	REVISED PER COMMENTS																			
STAMP: PROFESSIONAL ENGINEER STATE OF NEW YORK ENGINEERING 02/13/2019 03000001B		<table border="1"> <tr> <td>03000001B</td> <td>001</td> <td>ISSUE FOR BIDDING</td> </tr> <tr> <td>03000001B</td> <td>002</td> <td>REVISED PER COMMENTS</td> </tr> <tr> <td>03000001B</td> <td>003</td> <td>REVISED PER COMMENTS</td> </tr> <tr> <td>03000001B</td> <td>004</td> <td>REVISED PER COMMENTS</td> </tr> <tr> <td>03000001B</td> <td>005</td> <td>REVISED PER COMMENTS</td> </tr> </table>		03000001B	001	ISSUE FOR BIDDING	03000001B	002	REVISED PER COMMENTS	03000001B	003	REVISED PER COMMENTS	03000001B	004	REVISED PER COMMENTS	03000001B	005	REVISED PER COMMENTS			
03000001B	001	ISSUE FOR BIDDING																			
03000001B	002	REVISED PER COMMENTS																			
03000001B	003	REVISED PER COMMENTS																			
03000001B	004	REVISED PER COMMENTS																			
03000001B	005	REVISED PER COMMENTS																			
Office of Construction and Facilities Management		<table border="1"> <tr> <td>03000001B</td> <td>001</td> <td>ISSUE FOR BIDDING</td> </tr> <tr> <td>03000001B</td> <td>002</td> <td>REVISED PER COMMENTS</td> </tr> <tr> <td>03000001B</td> <td>003</td> <td>REVISED PER COMMENTS</td> </tr> <tr> <td>03000001B</td> <td>004</td> <td>REVISED PER COMMENTS</td> </tr> <tr> <td>03000001B</td> <td>005</td> <td>REVISED PER COMMENTS</td> </tr> </table>		03000001B	001	ISSUE FOR BIDDING	03000001B	002	REVISED PER COMMENTS	03000001B	003	REVISED PER COMMENTS	03000001B	004	REVISED PER COMMENTS	03000001B	005	REVISED PER COMMENTS			
03000001B	001	ISSUE FOR BIDDING																			
03000001B	002	REVISED PER COMMENTS																			
03000001B	003	REVISED PER COMMENTS																			
03000001B	004	REVISED PER COMMENTS																			
03000001B	005	REVISED PER COMMENTS																			
U.S. Department of Veterans Affairs		<table border="1"> <tr> <td>03000001B</td> <td>001</td> <td>ISSUE FOR BIDDING</td> </tr> <tr> <td>03000001B</td> <td>002</td> <td>REVISED PER COMMENTS</td> </tr> <tr> <td>03000001B</td> <td>003</td> <td>REVISED PER COMMENTS</td> </tr> <tr> <td>03000001B</td> <td>004</td> <td>REVISED PER COMMENTS</td> </tr> <tr> <td>03000001B</td> <td>005</td> <td>REVISED PER COMMENTS</td> </tr> </table>		03000001B	001	ISSUE FOR BIDDING	03000001B	002	REVISED PER COMMENTS	03000001B	003	REVISED PER COMMENTS	03000001B	004	REVISED PER COMMENTS	03000001B	005	REVISED PER COMMENTS			
03000001B	001	ISSUE FOR BIDDING																			
03000001B	002	REVISED PER COMMENTS																			
03000001B	003	REVISED PER COMMENTS																			
03000001B	004	REVISED PER COMMENTS																			
03000001B	005	REVISED PER COMMENTS																			
ARCHITECT/ENGINEER OF RECORD: CLH CONSULTANTS, PLLC		<table border="1"> <tr> <td>03000001B</td> <td>001</td> <td>ISSUE FOR BIDDING</td> </tr> <tr> <td>03000001B</td> <td>002</td> <td>REVISED PER COMMENTS</td> </tr> <tr> <td>03000001B</td> <td>003</td> <td>REVISED PER COMMENTS</td> </tr> <tr> <td>03000001B</td> <td>004</td> <td>REVISED PER COMMENTS</td> </tr> <tr> <td>03000001B</td> <td>005</td> <td>REVISED PER COMMENTS</td> </tr> </table>		03000001B	001	ISSUE FOR BIDDING	03000001B	002	REVISED PER COMMENTS	03000001B	003	REVISED PER COMMENTS	03000001B	004	REVISED PER COMMENTS	03000001B	005	REVISED PER COMMENTS			
03000001B	001	ISSUE FOR BIDDING																			
03000001B	002	REVISED PER COMMENTS																			
03000001B	003	REVISED PER COMMENTS																			
03000001B	004	REVISED PER COMMENTS																			
03000001B	005	REVISED PER COMMENTS																			
ARCHITECT/ENGINEER OF RECORD: CLH CONSULTANTS, PLLC		<table border="1"> <tr> <td>03000001B</td> <td>001</td> <td>ISSUE FOR BIDDING</td> </tr> <tr> <td>03000001B</td> <td>002</td> <td>REVISED PER COMMENTS</td> </tr> <tr> <td>03000001B</td> <td>003</td> <td>REVISED PER COMMENTS</td> </tr> <tr> <td>03000001B</td> <td>004</td> <td>REVISED PER COMMENTS</td> </tr> <tr> <td>03000001B</td> <td>005</td> <td>REVISED PER COMMENTS</td> </tr> </table>		03000001B	001	ISSUE FOR BIDDING	03000001B	002	REVISED PER COMMENTS	03000001B	003	REVISED PER COMMENTS	03000001B	004	REVISED PER COMMENTS	03000001B	005	REVISED PER COMMENTS			
03000001B	001	ISSUE FOR BIDDING																			
03000001B	002	REVISED PER COMMENTS																			
03000001B	003	REVISED PER COMMENTS																			
03000001B	004	REVISED PER COMMENTS																			
03000001B	005	REVISED PER COMMENTS																			
ARCHITECT/ENGINEER OF RECORD: CLH CONSULTANTS, PLLC		<table border="1"> <tr> <td>03000001B</td> <td>001</td> <td>ISSUE FOR BIDDING</td> </tr> <tr> <td>03000001B</td> <td>002</td> <td>REVISED PER COMMENTS</td> </tr> <tr> <td>03000001B</td> <td>003</td> <td>REVISED PER COMMENTS</td> </tr> <tr> <td>03000001B</td> <td>004</td> <td>REVISED PER COMMENTS</td> </tr> <tr> <td>03000001B</td> <td>005</td> <td>REVISED PER COMMENTS</td> </tr> </table>		03000001B	001	ISSUE FOR BIDDING	03000001B	002	REVISED PER COMMENTS	03000001B	003	REVISED PER COMMENTS	03000001B	004	REVISED PER COMMENTS	03000001B	005	REVISED PER COMMENTS			
03000001B	001	ISSUE FOR BIDDING																			
03000001B	002	REVISED PER COMMENTS																			
03000001B	003	REVISED PER COMMENTS																			
03000001B	004	REVISED PER COMMENTS																			
03000001B	005	REVISED PER COMMENTS																			
ARCHITECT/ENGINEER OF RECORD: CLH CONSULTANTS, PLLC		<table border="1"> <tr> <td>03000001B</td> <td>001</td> <td>ISSUE FOR BIDDING</td> </tr> <tr> <td>03000001B</td> <td>002</td> <td>REVISED PER COMMENTS</td> </tr> <tr> <td>03000001B</td> <td>003</td> <td>REVISED PER COMMENTS</td> </tr> <tr> <td>03000001B</td> <td>004</td> <td>REVISED PER COMMENTS</td> </tr> <tr> <td>03000001B</td> <td>005</td> <td>REVISED PER COMMENTS</td> </tr> </table>		03000001B	001	ISSUE FOR BIDDING	03000001B	002	REVISED PER COMMENTS	03000001B	003	REVISED PER COMMENTS	03000001B	004	REVISED PER COMMENTS	03000001B	005	REVISED PER COMMENTS			
03000001B	001	ISSUE FOR BIDDING																			
03000001B	002	REVISED PER COMMENTS																			
03000001B	003	REVISED PER COMMENTS																			
03000001B	004	REVISED PER COMMENTS																			
03000001B	005	REVISED PER COMMENTS																			
ARCHITECT/ENGINEER OF RECORD: CLH CONSULTANTS, PLLC		<table border="1"> <tr> <td>03000001B</td> <td>001</td> <td>ISSUE FOR BIDDING</td> </tr> <tr> <td>03000001B</td> <td>002</td> <td>REVISED PER COMMENTS</td> </tr> <tr> <td>03000001B</td> <td>003</td> <td>REVISED PER COMMENTS</td> </tr> <tr> <td>03000001B</td> <td>004</td> <td>REVISED PER COMMENTS</td> </tr> <tr> <td>03000001B</td> <td>005</td> <td>REVISED PER COMMENTS</td> </tr> </table>		03000001B	001	ISSUE FOR BIDDING	03000001B	002	REVISED PER COMMENTS	03000001B	003	REVISED PER COMMENTS	03000001B	004	REVISED PER COMMENTS	03000001B	005	REVISED PER COMMENTS			
03000001B	001	ISSUE FOR BIDDING																			
03000001B	002	REVISED PER COMMENTS																			
03000001B	003	REVISED PER COMMENTS																			
03000001B	004	REVISED PER COMMENTS																			
03000001B	005	REVISED PER COMMENTS																			
ARCHITECT/ENGINEER OF RECORD: CLH CONSULTANTS, PLLC		<table border="1"> <tr> <td>03000001B</td> <td>001</td> <td>ISSUE FOR BIDDING</td> </tr> <tr> <td>03000001B</td> <td>002</td> <td>REVISED PER COMMENTS</td> </tr> <tr> <td>03000001B</td> <td>003</td> <td>REVISED PER COMMENTS</td> </tr> <tr> <td>03000001B</td> <td>004</td> <td>REVISED PER COMMENTS</td> </tr> <tr> <td>03000001B</td> <td>005</td> <td>REVISED PER COMMENTS</td> </tr> </table>		03000001B	001	ISSUE FOR BIDDING	03000001B	002	REVISED PER COMMENTS	03000001B	003	REVISED PER COMMENTS	03000001B	004	REVISED PER COMMENTS	03000001B	005	REVISED PER COMMENTS			
03000001B	001	ISSUE FOR BIDDING																			
03000001B	002	REVISED PER COMMENTS																			
03000001B	003	REVISED PER COMMENTS																			
03000001B	004	REVISED PER COMMENTS																			
03000001B	005	REVISED PER COMMENTS																			
ARCHITECT/ENGINEER OF RECORD: CLH CONSULTANTS, PLLC		<table border="1"> <tr> <td>03000001B</td> <td>001</td> <td>ISSUE FOR BIDDING</td> </tr> <tr> <td>03000001B</td> <td>002</td> <td>REVISED PER COMMENTS</td> </tr> <tr> <td>03000001B</td> <td>003</td> <td>REVISED PER COMMENTS</td> </tr> <tr> <td>03000001B</td> <td>004</td> <td>REVISED PER COMMENTS</td> </tr> <tr> <td>03000001B</td> <td>005</td> <td>REVISED PER COMMENTS</td> </tr> </table>		03000001B	001	ISSUE FOR BIDDING	03000001B	002	REVISED PER COMMENTS	03000001B	003	REVISED PER COMMENTS	03000001B	004	REVISED PER COMMENTS	03000001B	005	REVISED PER COMMENTS			
03000001B	001	ISSUE FOR BIDDING																			
03000001B	002	REVISED PER COMMENTS																			
03000001B	003	REVISED PER COMMENTS																			
03000001B	004	REVISED PER COMMENTS																			
03000001B	005	REVISED PER COMMENTS																			
ARCHITECT/ENGINEER OF RECORD: CLH CONSULTANTS, PLLC		<table border="1"> <tr> <td>03000001B</td> <td>001</td> <td>ISSUE FOR BIDDING</td> </tr> <tr> <td>03000001B</td> <td>002</td> <td>REVISED PER COMMENTS</td> </tr> <tr> <td>03000001B</td> <td>003</td> <td>REVISED PER COMMENTS</td> </tr> <tr> <td>03000001B</td> <td>004</td> <td>REVISED PER COMMENTS</td> </tr> <tr> <td>03000001B</td> <td>005</td> <td>REVISED PER COMMENTS</td> </tr> </table>		03000001B	001	ISSUE FOR BIDDING	03000001B	002	REVISED PER COMMENTS	03000001B	003	REVISED PER COMMENTS	03000001B	004	REVISED PER COMMENTS	03000001B	005	REVISED PER COMMENTS			
03000001B	001	ISSUE FOR BIDDING																			
03000001B	002	REVISED PER COMMENTS																			
03000001B	003	REVISED PER COMMENTS																			
03000001B	004	REVISED PER COMMENTS																			
03000001B	005	REVISED PER COMMENTS																			
ARCHITECT/ENGINEER OF RECORD: CLH CONSULTANTS, PLLC		<table border="1"> <tr> <td>03000001B</td> <td>001</td> <td>ISSUE FOR BIDDING</td> </tr> <tr> <td>03000001B</td> <td>002</td> <td>REVISED PER COMMENTS</td> </tr> <tr> <td>03000001B</td> <td>003</td> <td>REVISED PER COMMENTS</td> </tr> <tr> <td>03000001B</td> <td>004</td> <td>REVISED PER COMMENTS</td> </tr> <tr> <td>03000001B</td> <td>005</td> <td>REVISED PER COMMENTS</td> </tr> </table>		03000001B	001	ISSUE FOR BIDDING	03000001B	002	REVISED PER COMMENTS	03000001B	003	REVISED PER COMMENTS	03000001B	004	REVISED PER COMMENTS	03000001B	005	REVISED PER COMMENTS			
03000001B	001	ISSUE FOR BIDDING																			
03000001B	002	REVISED PER COMMENTS																			
03000001B	003	REVISED PER COMMENTS																			
03000001B	004	REVISED PER COMMENTS																			
03000001B	005	REVISED PER COMMENTS																			
ARCHITECT/ENGINEER OF RECORD: CLH CONSULTANTS, PLLC		<table border="1"> <tr> <td>03000001B</td> <td>001</td> <td>ISSUE FOR BIDDING</td> </tr> <tr> <td>03000001B</td> <td>002</td> <td>REVISED PER COMMENTS</td> </tr> <tr> <td>03000001B</td> <td>003</td> <td>REVISED PER COMMENTS</td> </tr> <tr> <td>03000001B</td> <td>004</td> <td>REVISED PER COMMENTS</td> </tr> <tr> <td>03000001B</td> <td>005</td> <td>REVISED PER COMMENTS</td> </tr> </table>		03000001B	001	ISSUE FOR BIDDING	03000001B	002	REVISED PER COMMENTS	03000001B	003	REVISED PER COMMENTS	03000001B	004	REVISED PER COMMENTS	03000001B	005	REVISED PER COMMENTS			
03000001B	001	ISSUE FOR BIDDING																			
03000001B	002	REVISED PER COMMENTS																			
03000001B	003	REVISED PER COMMENTS																			
03000001B	004	REVISED PER COMMENTS																			
03000001B	005	REVISED PER COMMENTS																			
ARCHITECT/ENGINEER OF RECORD: CLH CONSULTANTS, PLLC		<table border="1"> <tr> <td>03000001B</td> <td>001</td> <td>ISSUE FOR BIDDING</td> </tr> <tr> <td>03000001B</td> <td>002</td> <td>REVISED PER COMMENTS</td> </tr> <tr> <td>03000001B</td> <td>003</td> <td>REVISED PER COMMENTS</td> </tr> <tr> <td>03000001B</td> <td>004</td> <td>REVISED PER COMMENTS</td> </tr> <tr> <td>03000001B</td> <td>005</td> <td>REVISED PER COMMENTS</td> </tr> </table>		03000001B	001	ISSUE FOR BIDDING	03000001B	002	REVISED PER COMMENTS	03000001B	003	REVISED PER COMMENTS	03000001B	004	REVISED PER COMMENTS	03000001B	005	REVISED PER COMMENTS			
03000001B	001	ISSUE FOR BIDDING																			
03000001B	002	REVISED PER COMMENTS																			
03000001B	003	REVISED PER COMMENTS																			
03000001B	004	REVISED PER COMMENTS																			
03000001B	005	REVISED PER COMMENTS																			
ARCHITECT/ENGINEER OF RECORD: CLH CONSULTANTS, PLLC		<table border="1"> <tr> <td>03000001B</td> <td>001</td> <td>ISSUE FOR BIDDING</td> </tr> <tr> <td>03000001B</td> <td>002</td> <td>REVISED PER COMMENTS</td> </tr> <tr> <td>03000001B</td> <td>003</td> <td>REVISED PER COMMENTS</td> </tr> <tr> <td>03000001B</td> <td>004</td> <td>REVISED PER COMMENTS</td> </tr> <tr> <td>03000001B</td> <td>005</td> <td>REVISED PER COMMENTS</td> </tr> </table>		03000001B	001	ISSUE FOR BIDDING	03000001B	002	REVISED PER COMMENTS	03000001B	003	REVISED PER COMMENTS	03000001B	004	REVISED PER COMMENTS	03000001B	005	REVISED PER COMMENTS			
03000001B	001	ISSUE FOR BIDDING																			
03000001B	002	REVISED PER COMMENTS																			
03000001B	003	REVISED PER COMMENTS																			
03000001B	004	REVISED PER COMMENTS																			
03000001B	005	REVISED PER COMMENTS																			
ARCHITECT/ENGINEER OF RECORD: CLH CONSULTANTS, PLLC		<table border="1"> <tr> <td>03000001B</td> <td>001</td> <td>ISSUE FOR BIDDING</td> </tr> <tr> <td>03000001B</td> <td>002</td> <td>REVISED PER COMMENTS</td> </tr> <tr> <td>03000001B</td> <td>003</td> <td>REVISED PER COMMENTS</td> </tr> <tr> <td>03000001B</td> <td>004</td> <td>REVISED PER COMMENTS</td> </tr> <tr> <td>03000001B</td> <td>005</td> <td>REVISED PER COMMENTS</td> </tr> </table>		03000001B	001	ISSUE FOR BIDDING	03000001B	002	REVISED PER COMMENTS	03000001B	003	REVISED PER COMMENTS	03000001B	004	REVISED PER COMMENTS	03000001B	005	REVISED PER COMMENTS			
03000001B	001	ISSUE FOR BIDDING																			
03000001B	002	REVISED PER COMMENTS																			
03000001B	003	REVISED PER COMMENTS																			
03000001B	004	REVISED PER COMMENTS																			
03000001B	005	REVISED PER COMMENTS																			
ARCHITECT/ENGINEER OF RECORD: CLH CONSULTANTS, PLLC		<table border="1"> <tr> <td>03000001B</td> <td>001</td> <td>ISSUE FOR BIDDING</td> </tr> <tr> <td>03000001B</td> <td>002</td> <td>REVISED PER COMMENTS</td> </tr> <tr> <td>03000001B</td> <td>003</td> <td>REVISED PER COMMENTS</td> </tr> <tr> <td>03000001B</td> <td>004</td> <td>REVISED PER COMMENTS</td> </tr> <tr> <td>03000001B</td> <td>005</td> <td>REVISED PER COMMENTS</td> </tr> </table>		03000001B	001	ISSUE FOR BIDDING	03000001B	002	REVISED PER COMMENTS	03000001B	003	REVISED PER COMMENTS	03000001B	004	REVISED PER COMMENTS	03000001B	005	REVISED PER COMMENTS			
03000001B	001	ISSUE FOR BIDDING																			
03000001B	002	REVISED PER COMMENTS																			
03000001B	003	REVISED PER COMMENTS																			
03000001B	004	REVISED PER COMMENTS																			
03000001B	005	REVISED PER COMMENTS																			
ARCHITECT/ENGINEER OF RECORD: CLH CONSULTANTS, PLLC		<table border="1"> <tr> <td>03000001B</td> <td>001</td> <td>ISSUE FOR BIDDING</td> </tr> <tr> <td>03000001B</td> <td>002</td> <td>REVISED PER COMMENTS</td> </tr> <tr> <td>03000001B</td> <td>003</td> <td>REVISED PER COMMENTS</td> </tr> <tr> <td>03000001B</td> <td>004</td> <td>REVISED PER COMMENTS</td> </tr> <tr> <td>03000001B</td> <td>005</td> <td>REVISED PER COMMENTS</td> </tr> </table>		03000001B	001	ISSUE FOR BIDDING	03000001B	002	REVISED PER COMMENTS	03000001B	003	REVISED PER COMMENTS	03000001B	004	REVISED PER COMMENTS	03000001B	005	REVISED PER COMMENTS			
03000001B	001	ISSUE FOR BIDDING																			
03000001B	002	REVISED PER COMMENTS																			
03000001B	003	REVISED PER COMMENTS																			
03000001B	004	REVISED PER COMMENTS																			
03000001B	005	REVISED PER COMMENTS																			
ARCHITECT/ENGINEER OF RECORD: CLH CONSULTANTS, PLLC		<table border="1"> <tr> <td>03000001B</td> <td>001</td> <td>ISSUE FOR BIDDING</td> </tr> <tr> <td>03000001B</td> <td>002</td> <td>REVISED PER COMMENTS</td> </tr> <tr> <td>03000001B</td> <td>003</td> <td>REVISED PER COMMENTS</td> </tr> <tr> <td>03000001B</td> <td>004</td> <td>REVISED PER COMMENTS</td> </tr> <tr> <td>03000001B</td> <td>005</td> <td>REVISED PER COMMENTS</td> </tr> </table>		03000001B	001	ISSUE FOR BIDDING	03000001B	002	REVISED PER COMMENTS	03000001B	003	REVISED PER COMMENTS	03000001B	004	REVISED PER COMMENTS	03000001B	005	REVISED PER COMMENTS			
03000001B	001	ISSUE FOR BIDDING																			
03000001B	002	REVISED PER COMMENTS																			
03000001B	003	REVISED PER COMMENTS																			
03000001B	004	REVISED PER COMMENTS																			
03000001B	005	REVISED PER COMMENTS																			
ARCHITECT/ENGINEER OF RECORD: CLH CONSULTANTS, PLLC		<table border="1"> <tr> <td>03000001B</td> <td>001</td> <td>ISSUE FOR BIDDING</td> </tr> <tr> <td>03000001B</td> <td>002</td> <td>REVISED PER COMMENTS</td> </tr> <tr> <td>03000001B</td> <td>003</td> <td>REVISED PER COMMENTS</td> </tr> <tr> <td>03000001B</td> <td>004</td> <td>REVISED PER COMMENTS</td> </tr> <tr> <td>03000001B</td> <td>005</td> <td>REVISED PER COMMENTS</td> </tr> </table>		03000001B	001	ISSUE FOR BIDDING	03000001B	002	REVISED PER COMMENTS	03000001B	003	REVISED PER COMMENTS	03000001B	004	REVISED PER COMMENTS	03000001B	005	REVISED PER COMMENTS			
03000001B	001	ISSUE FOR BIDDING																			
03000001B	002	REVISED PER COMMENTS																			
03000001B	003	REVISED PER COMMENTS																			
03000001B	004	REVISED PER COMMENTS																			
03000001B	005	REVISED PER COMMENTS																			

VA FORM 08-6231 11/20/10 (REV. 10-10-10) 08-6231

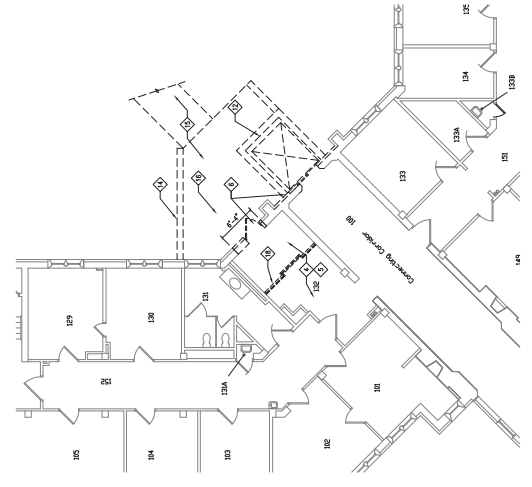
GENERAL DEMOLITION NOTES:
A. REFER TO SHEET AC-10 FOR SYMBOL NOTES.

DEMOLITION PLAN KEY NOTES:

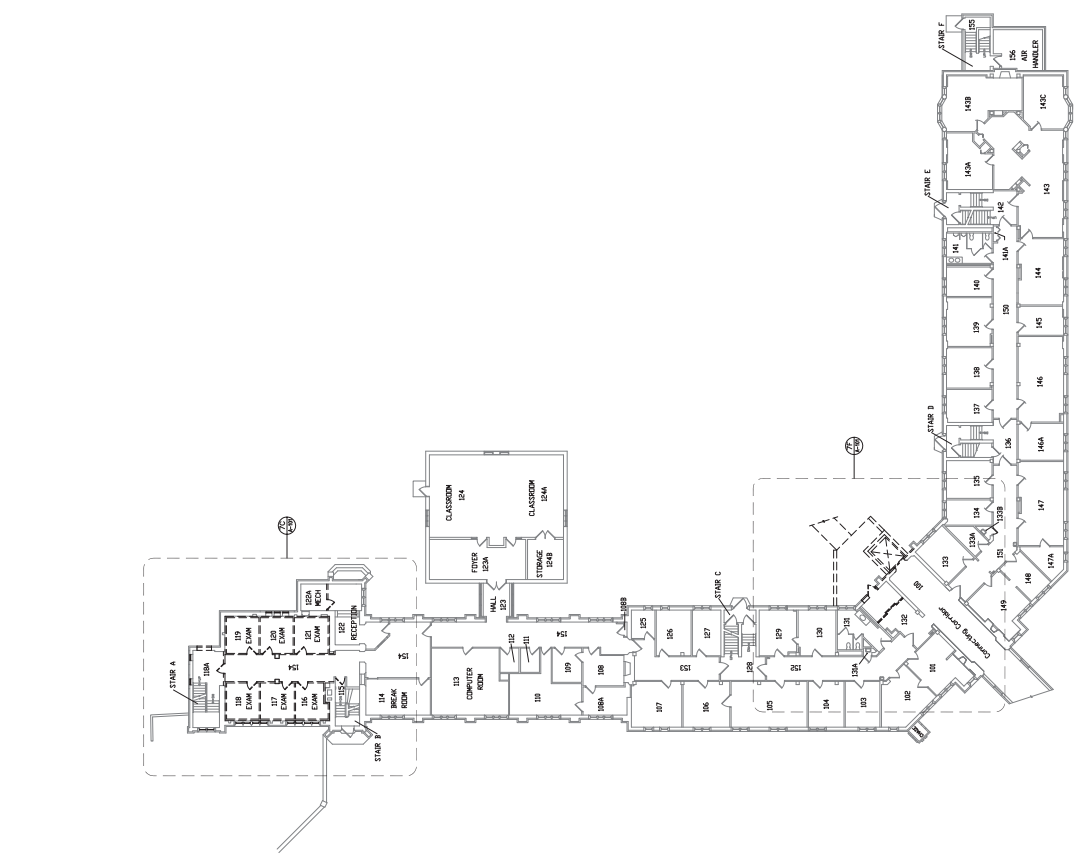
- ① REMOVE EXISTING WALL & ROOF
- ② REMOVE EXISTING DOOR AND DOOR FRAME, A PREP FOR NEW DOOR & DOOR FRAME
- ③ REMOVE EXISTING WINDOW & WINDOW FRAME TO EXPOSE WALL, REMOVE A PREP FOR NEW WINDOW & WINDOW FRAME TO EXPOSE WALL
- ④ REMOVE EXISTING WINDOW & WINDOW FRAME TO EXPOSE WALL, REMOVE EXISTING WINDOW & WINDOW FRAME TO EXPOSE WALL
- ⑤ REMOVE EXISTING WINDOW & WINDOW FRAME TO EXPOSE WALL, REMOVE EXISTING WINDOW & WINDOW FRAME TO EXPOSE WALL
- ⑥ REMOVE EXISTING WINDOW & WINDOW FRAME TO EXPOSE WALL, REMOVE EXISTING WINDOW & WINDOW FRAME TO EXPOSE WALL
- ⑦ REMOVE EXISTING WINDOW & WINDOW FRAME TO EXPOSE WALL, REMOVE EXISTING WINDOW & WINDOW FRAME TO EXPOSE WALL
- ⑧ REMOVE EXISTING WINDOW & WINDOW FRAME TO EXPOSE WALL, REMOVE EXISTING WINDOW & WINDOW FRAME TO EXPOSE WALL
- ⑨ REMOVE EXISTING WINDOW & WINDOW FRAME TO EXPOSE WALL, REMOVE EXISTING WINDOW & WINDOW FRAME TO EXPOSE WALL
- ⑩ REMOVE EXISTING WINDOW & WINDOW FRAME TO EXPOSE WALL, REMOVE EXISTING WINDOW & WINDOW FRAME TO EXPOSE WALL
- ⑪ REMOVE EXISTING WINDOW & WINDOW FRAME TO EXPOSE WALL, REMOVE EXISTING WINDOW & WINDOW FRAME TO EXPOSE WALL
- ⑫ REMOVE EXISTING WINDOW & WINDOW FRAME TO EXPOSE WALL, REMOVE EXISTING WINDOW & WINDOW FRAME TO EXPOSE WALL
- ⑬ REMOVE EXISTING WINDOW & WINDOW FRAME TO EXPOSE WALL, REMOVE EXISTING WINDOW & WINDOW FRAME TO EXPOSE WALL
- ⑭ REMOVE EXISTING WINDOW & WINDOW FRAME TO EXPOSE WALL, REMOVE EXISTING WINDOW & WINDOW FRAME TO EXPOSE WALL
- ⑮ REMOVE EXISTING WINDOW & WINDOW FRAME TO EXPOSE WALL, REMOVE EXISTING WINDOW & WINDOW FRAME TO EXPOSE WALL
- ⑯ REMOVE EXISTING WINDOW & WINDOW FRAME TO EXPOSE WALL, REMOVE EXISTING WINDOW & WINDOW FRAME TO EXPOSE WALL
- ⑰ REMOVE EXISTING WINDOW & WINDOW FRAME TO EXPOSE WALL, REMOVE EXISTING WINDOW & WINDOW FRAME TO EXPOSE WALL
- ⑱ REMOVE EXISTING WINDOW & WINDOW FRAME TO EXPOSE WALL, REMOVE EXISTING WINDOW & WINDOW FRAME TO EXPOSE WALL
- ⑲ REMOVE EXISTING WINDOW & WINDOW FRAME TO EXPOSE WALL, REMOVE EXISTING WINDOW & WINDOW FRAME TO EXPOSE WALL
- ⑳ REMOVE EXISTING WINDOW & WINDOW FRAME TO EXPOSE WALL, REMOVE EXISTING WINDOW & WINDOW FRAME TO EXPOSE WALL
- ㉑ REMOVE EXISTING WINDOW & WINDOW FRAME TO EXPOSE WALL, REMOVE EXISTING WINDOW & WINDOW FRAME TO EXPOSE WALL
- ㉒ REMOVE EXISTING WINDOW & WINDOW FRAME TO EXPOSE WALL, REMOVE EXISTING WINDOW & WINDOW FRAME TO EXPOSE WALL
- ㉓ REMOVE EXISTING WINDOW & WINDOW FRAME TO EXPOSE WALL, REMOVE EXISTING WINDOW & WINDOW FRAME TO EXPOSE WALL
- ㉔ REMOVE EXISTING WINDOW & WINDOW FRAME TO EXPOSE WALL, REMOVE EXISTING WINDOW & WINDOW FRAME TO EXPOSE WALL
- ㉕ REMOVE EXISTING WINDOW & WINDOW FRAME TO EXPOSE WALL, REMOVE EXISTING WINDOW & WINDOW FRAME TO EXPOSE WALL
- ㉖ REMOVE EXISTING WINDOW & WINDOW FRAME TO EXPOSE WALL, REMOVE EXISTING WINDOW & WINDOW FRAME TO EXPOSE WALL
- ㉗ REMOVE EXISTING WINDOW & WINDOW FRAME TO EXPOSE WALL, REMOVE EXISTING WINDOW & WINDOW FRAME TO EXPOSE WALL
- ㉘ REMOVE EXISTING WINDOW & WINDOW FRAME TO EXPOSE WALL, REMOVE EXISTING WINDOW & WINDOW FRAME TO EXPOSE WALL
- ㉙ REMOVE EXISTING WINDOW & WINDOW FRAME TO EXPOSE WALL, REMOVE EXISTING WINDOW & WINDOW FRAME TO EXPOSE WALL
- ㉚ REMOVE EXISTING WINDOW & WINDOW FRAME TO EXPOSE WALL, REMOVE EXISTING WINDOW & WINDOW FRAME TO EXPOSE WALL
- ㉛ REMOVE EXISTING WINDOW & WINDOW FRAME TO EXPOSE WALL, REMOVE EXISTING WINDOW & WINDOW FRAME TO EXPOSE WALL
- ㉜ REMOVE EXISTING WINDOW & WINDOW FRAME TO EXPOSE WALL, REMOVE EXISTING WINDOW & WINDOW FRAME TO EXPOSE WALL
- ㉝ REMOVE EXISTING WINDOW & WINDOW FRAME TO EXPOSE WALL, REMOVE EXISTING WINDOW & WINDOW FRAME TO EXPOSE WALL
- ㉞ REMOVE EXISTING WINDOW & WINDOW FRAME TO EXPOSE WALL, REMOVE EXISTING WINDOW & WINDOW FRAME TO EXPOSE WALL
- ㉟ REMOVE EXISTING WINDOW & WINDOW FRAME TO EXPOSE WALL, REMOVE EXISTING WINDOW & WINDOW FRAME TO EXPOSE WALL
- ㊱ REMOVE EXISTING WINDOW & WINDOW FRAME TO EXPOSE WALL, REMOVE EXISTING WINDOW & WINDOW FRAME TO EXPOSE WALL
- ㊲ REMOVE EXISTING WINDOW & WINDOW FRAME TO EXPOSE WALL, REMOVE EXISTING WINDOW & WINDOW FRAME TO EXPOSE WALL
- ㊳ REMOVE EXISTING WINDOW & WINDOW FRAME TO EXPOSE WALL, REMOVE EXISTING WINDOW & WINDOW FRAME TO EXPOSE WALL
- ㊴ REMOVE EXISTING WINDOW & WINDOW FRAME TO EXPOSE WALL, REMOVE EXISTING WINDOW & WINDOW FRAME TO EXPOSE WALL
- ㊵ REMOVE EXISTING WINDOW & WINDOW FRAME TO EXPOSE WALL, REMOVE EXISTING WINDOW & WINDOW FRAME TO EXPOSE WALL
- ㊶ REMOVE EXISTING WINDOW & WINDOW FRAME TO EXPOSE WALL, REMOVE EXISTING WINDOW & WINDOW FRAME TO EXPOSE WALL
- ㊷ REMOVE EXISTING WINDOW & WINDOW FRAME TO EXPOSE WALL, REMOVE EXISTING WINDOW & WINDOW FRAME TO EXPOSE WALL
- ㊸ REMOVE EXISTING WINDOW & WINDOW FRAME TO EXPOSE WALL, REMOVE EXISTING WINDOW & WINDOW FRAME TO EXPOSE WALL
- ㊹ REMOVE EXISTING WINDOW & WINDOW FRAME TO EXPOSE WALL, REMOVE EXISTING WINDOW & WINDOW FRAME TO EXPOSE WALL
- ㊺ REMOVE EXISTING WINDOW & WINDOW FRAME TO EXPOSE WALL, REMOVE EXISTING WINDOW & WINDOW FRAME TO EXPOSE WALL
- ㊻ REMOVE EXISTING WINDOW & WINDOW FRAME TO EXPOSE WALL, REMOVE EXISTING WINDOW & WINDOW FRAME TO EXPOSE WALL
- ㊼ REMOVE EXISTING WINDOW & WINDOW FRAME TO EXPOSE WALL, REMOVE EXISTING WINDOW & WINDOW FRAME TO EXPOSE WALL
- ㊽ REMOVE EXISTING WINDOW & WINDOW FRAME TO EXPOSE WALL, REMOVE EXISTING WINDOW & WINDOW FRAME TO EXPOSE WALL
- ㊾ REMOVE EXISTING WINDOW & WINDOW FRAME TO EXPOSE WALL, REMOVE EXISTING WINDOW & WINDOW FRAME TO EXPOSE WALL
- ㊿ REMOVE EXISTING WINDOW & WINDOW FRAME TO EXPOSE WALL, REMOVE EXISTING WINDOW & WINDOW FRAME TO EXPOSE WALL



76 ENLARGED PLAN - DEMOLITION FIRST FLOOR
SCALE: 1/4" = 1'-0"



77 ENLARGED PLAN - DEMOLITION FIRST FLOOR
SCALE: 1/4" = 1'-0"

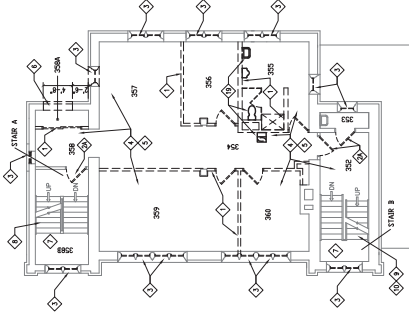
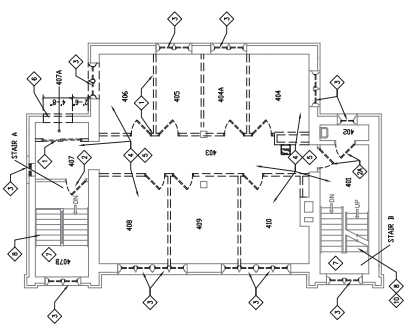


DEMOLITION FIRST FLOOR PLAN
SCALE: 1/4" = 1'-0"

<p>PROJECT: 165202019</p> <p>DATE: 12/10/2018</p> <p>BY: S:\Projects\165202019</p>	<p>PROJECT NAME: RENOVATE TOWER BUILDING 1</p> <p>CLIENT: Shoux Falls, SD 57105</p> <p>DATE: 05/09/2019</p>	<p>PROJECT NUMBER: 438-18-102</p> <p>ISSUE NUMBER: 1</p> <p>ISSUE DATE: 05/09/2019</p>	<p>CHECKED BY: [Signature]</p> <p>DATE: 05/09/2019</p>	<p>PROJECT NUMBER: AD-101</p> <p>ISSUE NUMBER: 1</p>
<p>ARCHITECT/ENGINEER OF RECORD:</p> <p>CLH CANNON DESIGN GROUP 1100 N. UNIVERSITY AVENUE SPOKANE, WY 83402 (202) 670-0000</p>		<p>OFFICE OF CONSTRUCTION AND FACILITIES MANAGEMENT</p> <p>VA U.S. Department of Veterans Affairs</p>		<p>STAMP:</p>
<p>CONSULTANT:</p>			<p>BID DOCUMENTS:</p>	
<p>DEMOLITION FIRST FLOOR PLAN:</p>			<p>FULLY SPRINKLERED:</p>	

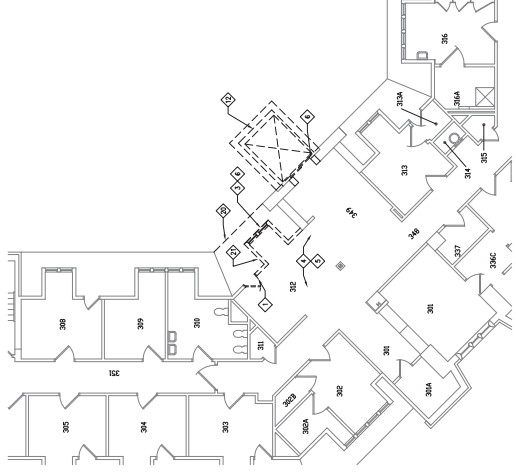
GENERAL DEMOLITION NOTES:
 A. REFER TO SHEET AD-100 FOR TYPICAL NOTES.

- DEMOLITION PLAN KEY NOTES:**
- 1. REMOVE EXISTING WALL & DOOR.
 - 2. REMOVE EXISTING WALL & DOOR FRAME & PREP FOR NEW FRAMING.
 - 3. REMOVE EXISTING ROOFING & PREP FOR NEW ROOFING.
 - 4. REMOVE EXISTING ROOFING & PREP FOR NEW ROOFING.
 - 5. REMOVE EXISTING ROOFING & PREP FOR NEW ROOFING.
 - 6. REMOVE EXISTING ROOFING & PREP FOR NEW ROOFING.
 - 7. REMOVE EXISTING ROOFING & PREP FOR NEW ROOFING.
 - 8. REMOVE EXISTING ROOFING & PREP FOR NEW ROOFING.
 - 9. REMOVE EXISTING ROOFING & PREP FOR NEW ROOFING.
 - 10. REMOVE EXISTING ROOFING & PREP FOR NEW ROOFING.
 - 11. REMOVE EXISTING ROOFING & PREP FOR NEW ROOFING.
 - 12. REMOVE EXISTING ROOFING & PREP FOR NEW ROOFING.
 - 13. REMOVE EXISTING ROOFING & PREP FOR NEW ROOFING.
 - 14. REMOVE EXISTING ROOFING & PREP FOR NEW ROOFING.
 - 15. REMOVE EXISTING ROOFING & PREP FOR NEW ROOFING.
 - 16. REMOVE EXISTING ROOFING & PREP FOR NEW ROOFING.
 - 17. REMOVE EXISTING ROOFING & PREP FOR NEW ROOFING.
 - 18. REMOVE EXISTING ROOFING & PREP FOR NEW ROOFING.
 - 19. REMOVE EXISTING ROOFING & PREP FOR NEW ROOFING.
 - 20. REMOVE EXISTING ROOFING & PREP FOR NEW ROOFING.
 - 21. REMOVE EXISTING ROOFING & PREP FOR NEW ROOFING.
 - 22. REMOVE EXISTING ROOFING & PREP FOR NEW ROOFING.
 - 23. REMOVE EXISTING ROOFING & PREP FOR NEW ROOFING.
 - 24. REMOVE EXISTING ROOFING & PREP FOR NEW ROOFING.
 - 25. REMOVE EXISTING ROOFING & PREP FOR NEW ROOFING.
 - 26. REMOVE EXISTING ROOFING & PREP FOR NEW ROOFING.
 - 27. REMOVE EXISTING ROOFING & PREP FOR NEW ROOFING.
 - 28. REMOVE EXISTING ROOFING & PREP FOR NEW ROOFING.
 - 29. REMOVE EXISTING ROOFING & PREP FOR NEW ROOFING.
 - 30. REMOVE EXISTING ROOFING & PREP FOR NEW ROOFING.
 - 31. REMOVE EXISTING ROOFING & PREP FOR NEW ROOFING.
 - 32. REMOVE EXISTING ROOFING & PREP FOR NEW ROOFING.
 - 33. REMOVE EXISTING ROOFING & PREP FOR NEW ROOFING.
 - 34. REMOVE EXISTING ROOFING & PREP FOR NEW ROOFING.
 - 35. REMOVE EXISTING ROOFING & PREP FOR NEW ROOFING.
 - 36. REMOVE EXISTING ROOFING & PREP FOR NEW ROOFING.
 - 37. REMOVE EXISTING ROOFING & PREP FOR NEW ROOFING.
 - 38. REMOVE EXISTING ROOFING & PREP FOR NEW ROOFING.
 - 39. REMOVE EXISTING ROOFING & PREP FOR NEW ROOFING.
 - 40. REMOVE EXISTING ROOFING & PREP FOR NEW ROOFING.
 - 41. REMOVE EXISTING ROOFING & PREP FOR NEW ROOFING.
 - 42. REMOVE EXISTING ROOFING & PREP FOR NEW ROOFING.
 - 43. REMOVE EXISTING ROOFING & PREP FOR NEW ROOFING.
 - 44. REMOVE EXISTING ROOFING & PREP FOR NEW ROOFING.
 - 45. REMOVE EXISTING ROOFING & PREP FOR NEW ROOFING.
 - 46. REMOVE EXISTING ROOFING & PREP FOR NEW ROOFING.
 - 47. REMOVE EXISTING ROOFING & PREP FOR NEW ROOFING.
 - 48. REMOVE EXISTING ROOFING & PREP FOR NEW ROOFING.
 - 49. REMOVE EXISTING ROOFING & PREP FOR NEW ROOFING.
 - 50. REMOVE EXISTING ROOFING & PREP FOR NEW ROOFING.
 - 51. REMOVE EXISTING ROOFING & PREP FOR NEW ROOFING.
 - 52. REMOVE EXISTING ROOFING & PREP FOR NEW ROOFING.
 - 53. REMOVE EXISTING ROOFING & PREP FOR NEW ROOFING.
 - 54. REMOVE EXISTING ROOFING & PREP FOR NEW ROOFING.
 - 55. REMOVE EXISTING ROOFING & PREP FOR NEW ROOFING.
 - 56. REMOVE EXISTING ROOFING & PREP FOR NEW ROOFING.
 - 57. REMOVE EXISTING ROOFING & PREP FOR NEW ROOFING.
 - 58. REMOVE EXISTING ROOFING & PREP FOR NEW ROOFING.
 - 59. REMOVE EXISTING ROOFING & PREP FOR NEW ROOFING.
 - 60. REMOVE EXISTING ROOFING & PREP FOR NEW ROOFING.
 - 61. REMOVE EXISTING ROOFING & PREP FOR NEW ROOFING.
 - 62. REMOVE EXISTING ROOFING & PREP FOR NEW ROOFING.
 - 63. REMOVE EXISTING ROOFING & PREP FOR NEW ROOFING.
 - 64. REMOVE EXISTING ROOFING & PREP FOR NEW ROOFING.
 - 65. REMOVE EXISTING ROOFING & PREP FOR NEW ROOFING.
 - 66. REMOVE EXISTING ROOFING & PREP FOR NEW ROOFING.
 - 67. REMOVE EXISTING ROOFING & PREP FOR NEW ROOFING.
 - 68. REMOVE EXISTING ROOFING & PREP FOR NEW ROOFING.
 - 69. REMOVE EXISTING ROOFING & PREP FOR NEW ROOFING.
 - 70. REMOVE EXISTING ROOFING & PREP FOR NEW ROOFING.
 - 71. REMOVE EXISTING ROOFING & PREP FOR NEW ROOFING.
 - 72. REMOVE EXISTING ROOFING & PREP FOR NEW ROOFING.
 - 73. REMOVE EXISTING ROOFING & PREP FOR NEW ROOFING.
 - 74. REMOVE EXISTING ROOFING & PREP FOR NEW ROOFING.
 - 75. REMOVE EXISTING ROOFING & PREP FOR NEW ROOFING.
 - 76. REMOVE EXISTING ROOFING & PREP FOR NEW ROOFING.
 - 77. REMOVE EXISTING ROOFING & PREP FOR NEW ROOFING.
 - 78. REMOVE EXISTING ROOFING & PREP FOR NEW ROOFING.
 - 79. REMOVE EXISTING ROOFING & PREP FOR NEW ROOFING.
 - 80. REMOVE EXISTING ROOFING & PREP FOR NEW ROOFING.
 - 81. REMOVE EXISTING ROOFING & PREP FOR NEW ROOFING.
 - 82. REMOVE EXISTING ROOFING & PREP FOR NEW ROOFING.
 - 83. REMOVE EXISTING ROOFING & PREP FOR NEW ROOFING.
 - 84. REMOVE EXISTING ROOFING & PREP FOR NEW ROOFING.
 - 85. REMOVE EXISTING ROOFING & PREP FOR NEW ROOFING.
 - 86. REMOVE EXISTING ROOFING & PREP FOR NEW ROOFING.
 - 87. REMOVE EXISTING ROOFING & PREP FOR NEW ROOFING.
 - 88. REMOVE EXISTING ROOFING & PREP FOR NEW ROOFING.
 - 89. REMOVE EXISTING ROOFING & PREP FOR NEW ROOFING.
 - 90. REMOVE EXISTING ROOFING & PREP FOR NEW ROOFING.
 - 91. REMOVE EXISTING ROOFING & PREP FOR NEW ROOFING.
 - 92. REMOVE EXISTING ROOFING & PREP FOR NEW ROOFING.
 - 93. REMOVE EXISTING ROOFING & PREP FOR NEW ROOFING.
 - 94. REMOVE EXISTING ROOFING & PREP FOR NEW ROOFING.
 - 95. REMOVE EXISTING ROOFING & PREP FOR NEW ROOFING.
 - 96. REMOVE EXISTING ROOFING & PREP FOR NEW ROOFING.
 - 97. REMOVE EXISTING ROOFING & PREP FOR NEW ROOFING.
 - 98. REMOVE EXISTING ROOFING & PREP FOR NEW ROOFING.
 - 99. REMOVE EXISTING ROOFING & PREP FOR NEW ROOFING.
 - 100. REMOVE EXISTING ROOFING & PREP FOR NEW ROOFING.

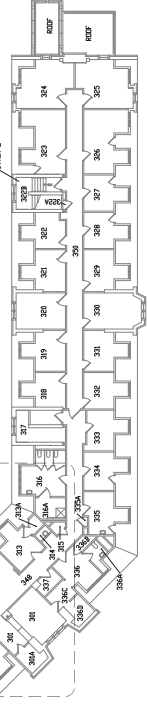
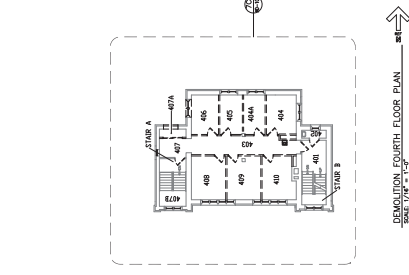


76 ENLARGED PLAN - DEMOLITION FOURTH FLOOR

66 ENLARGED PLAN - DEMOLITION THIRD FLOOR



77 ENLARGED PLAN - DEMOLITION THIRD FLOOR



REV	DATE	DESCRIPTION
01	05/20/2019	ISSUE FOR PERMIT
02	06/10/2019	ISSUE FOR PERMIT
03	06/10/2019	ISSUE FOR PERMIT
04	06/10/2019	ISSUE FOR PERMIT
05	06/10/2019	ISSUE FOR PERMIT
06	06/10/2019	ISSUE FOR PERMIT
07	06/10/2019	ISSUE FOR PERMIT
08	06/10/2019	ISSUE FOR PERMIT
09	06/10/2019	ISSUE FOR PERMIT
10	06/10/2019	ISSUE FOR PERMIT

CONSULTANT

ARCHITECT/ENGINEER OF RECORD

CLH
 CONSULTANTS
 1000 N. MAIN ST. SUITE 200
 CHARLOTTE, NC 28202
 (704) 375-1100

STAMP

REGISTERED PROFESSIONAL ENGINEER
 STATE OF NORTH CAROLINA
 NO. 38122
 C. S. HARRIS, III
 PROJECT NO. 19-0001

Office of Construction and Facilities Management

U.S. Department of Veterans Affairs

APPROVE PROJECT DESIGNER

PROJECT TITLE
 RENOVATE TOWER BUILDING 1

PROJECT NUMBER
 438-18-102

LOCATION
 Shiloh Falls, SD 57105

CHECKED
 RO

DATE
 05/20/2019

SCALE
 AS SHOWN

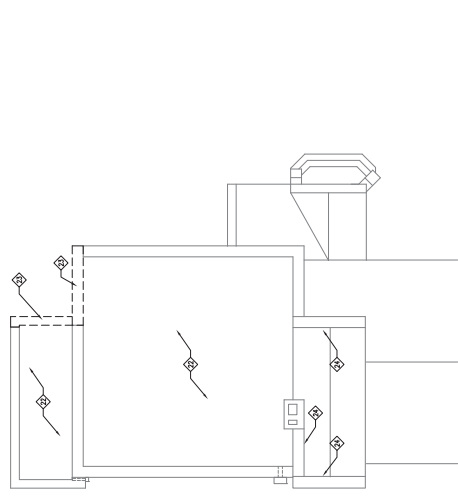
PROJECT NUMBER
 1

WORK NUMBER
 AD-103

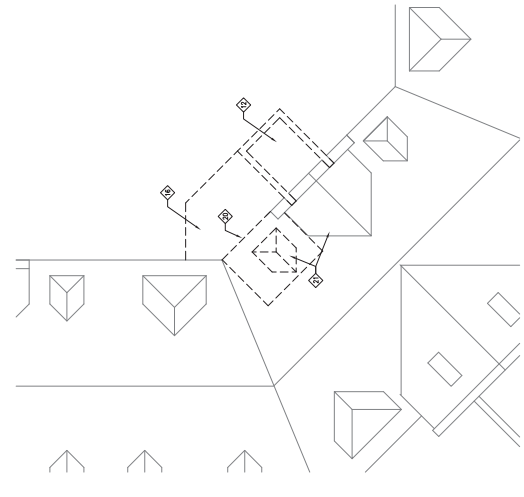
BID DOCUMENTS	FULLY SPRINKLERED
----------------------	--------------------------

GENERAL DEMOLITION NOTES:
 A. REFER TO SHEET AD-10 FOR SYMBOL NOTES.

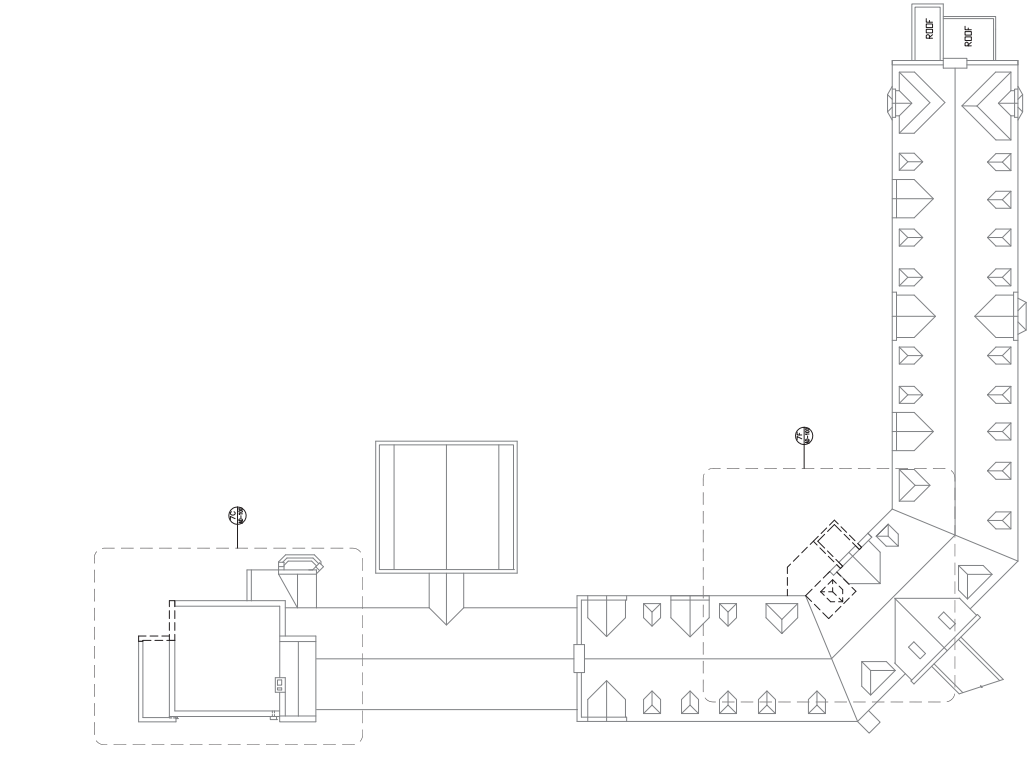
- DEMOLITION PLAN KEY NOTES:**
- 1 REMOVE EXISTING WALL & DOOR.
 - 2 REMOVE EXISTING WALL & DOOR FRAME & PREP FOR NEW WINDOW.
 - 3 REMOVE EXISTING WALL & DOOR FRAME & PREP FOR NEW WINDOW.
 - 4 REMOVE EXISTING WALL & DOOR FRAME & PREP FOR NEW WINDOW.
 - 5 REMOVE EXISTING WALL & DOOR FRAME & PREP FOR NEW WINDOW.
 - 6 REMOVE EXISTING WALL & DOOR FRAME & PREP FOR NEW WINDOW.
 - 7 REMOVE EXISTING WALL & DOOR FRAME & PREP FOR NEW WINDOW.
 - 8 REMOVE EXISTING WALL & DOOR FRAME & PREP FOR NEW WINDOW.
 - 9 REMOVE EXISTING WALL & DOOR FRAME & PREP FOR NEW WINDOW.
 - 10 REMOVE EXISTING WALL & DOOR FRAME & PREP FOR NEW WINDOW.
 - 11 REMOVE EXISTING WALL & DOOR FRAME & PREP FOR NEW WINDOW.
 - 12 REMOVE EXISTING WALL & DOOR FRAME & PREP FOR NEW WINDOW.
 - 13 REMOVE EXISTING WALL & DOOR FRAME & PREP FOR NEW WINDOW.
 - 14 REMOVE EXISTING WALL & DOOR FRAME & PREP FOR NEW WINDOW.
 - 15 REMOVE EXISTING WALL & DOOR FRAME & PREP FOR NEW WINDOW.
 - 16 REMOVE EXISTING WALL & DOOR FRAME & PREP FOR NEW WINDOW.
 - 17 REMOVE EXISTING WALL & DOOR FRAME & PREP FOR NEW WINDOW.
 - 18 REMOVE EXISTING WALL & DOOR FRAME & PREP FOR NEW WINDOW.
 - 19 REMOVE EXISTING WALL & DOOR FRAME & PREP FOR NEW WINDOW.
 - 20 REMOVE EXISTING WALL & DOOR FRAME & PREP FOR NEW WINDOW.
 - 21 REMOVE EXISTING WALL & DOOR FRAME & PREP FOR NEW WINDOW.
 - 22 REMOVE EXISTING WALL & DOOR FRAME & PREP FOR NEW WINDOW.
 - 23 REMOVE EXISTING WALL & DOOR FRAME & PREP FOR NEW WINDOW.
 - 24 REMOVE EXISTING WALL & DOOR FRAME & PREP FOR NEW WINDOW.
 - 25 REMOVE EXISTING WALL & DOOR FRAME & PREP FOR NEW WINDOW.
 - 26 REMOVE EXISTING WALL & DOOR FRAME & PREP FOR NEW WINDOW.
 - 27 REMOVE EXISTING WALL & DOOR FRAME & PREP FOR NEW WINDOW.
 - 28 REMOVE EXISTING WALL & DOOR FRAME & PREP FOR NEW WINDOW.
 - 29 REMOVE EXISTING WALL & DOOR FRAME & PREP FOR NEW WINDOW.
 - 30 REMOVE EXISTING WALL & DOOR FRAME & PREP FOR NEW WINDOW.
 - 31 REMOVE EXISTING WALL & DOOR FRAME & PREP FOR NEW WINDOW.
 - 32 REMOVE EXISTING WALL & DOOR FRAME & PREP FOR NEW WINDOW.
 - 33 REMOVE EXISTING WALL & DOOR FRAME & PREP FOR NEW WINDOW.
 - 34 REMOVE EXISTING WALL & DOOR FRAME & PREP FOR NEW WINDOW.
 - 35 REMOVE EXISTING WALL & DOOR FRAME & PREP FOR NEW WINDOW.
 - 36 REMOVE EXISTING WALL & DOOR FRAME & PREP FOR NEW WINDOW.
 - 37 REMOVE EXISTING WALL & DOOR FRAME & PREP FOR NEW WINDOW.
 - 38 REMOVE EXISTING WALL & DOOR FRAME & PREP FOR NEW WINDOW.
 - 39 REMOVE EXISTING WALL & DOOR FRAME & PREP FOR NEW WINDOW.
 - 40 REMOVE EXISTING WALL & DOOR FRAME & PREP FOR NEW WINDOW.
 - 41 REMOVE EXISTING WALL & DOOR FRAME & PREP FOR NEW WINDOW.
 - 42 REMOVE EXISTING WALL & DOOR FRAME & PREP FOR NEW WINDOW.
 - 43 REMOVE EXISTING WALL & DOOR FRAME & PREP FOR NEW WINDOW.
 - 44 REMOVE EXISTING WALL & DOOR FRAME & PREP FOR NEW WINDOW.
 - 45 REMOVE EXISTING WALL & DOOR FRAME & PREP FOR NEW WINDOW.
 - 46 REMOVE EXISTING WALL & DOOR FRAME & PREP FOR NEW WINDOW.
 - 47 REMOVE EXISTING WALL & DOOR FRAME & PREP FOR NEW WINDOW.
 - 48 REMOVE EXISTING WALL & DOOR FRAME & PREP FOR NEW WINDOW.
 - 49 REMOVE EXISTING WALL & DOOR FRAME & PREP FOR NEW WINDOW.
 - 50 REMOVE EXISTING WALL & DOOR FRAME & PREP FOR NEW WINDOW.



76 ENLARGED PLAN - DEMOLITION ROOF FLOOR
 SCALE 1/8" = 1'-0"



77 ENLARGED PLAN - DEMOLITION ROOF FLOOR
 SCALE 1/8" = 1'-0"



DEMOLITION ROOF PLAN
 SCALE 1/8" = 1'-0"

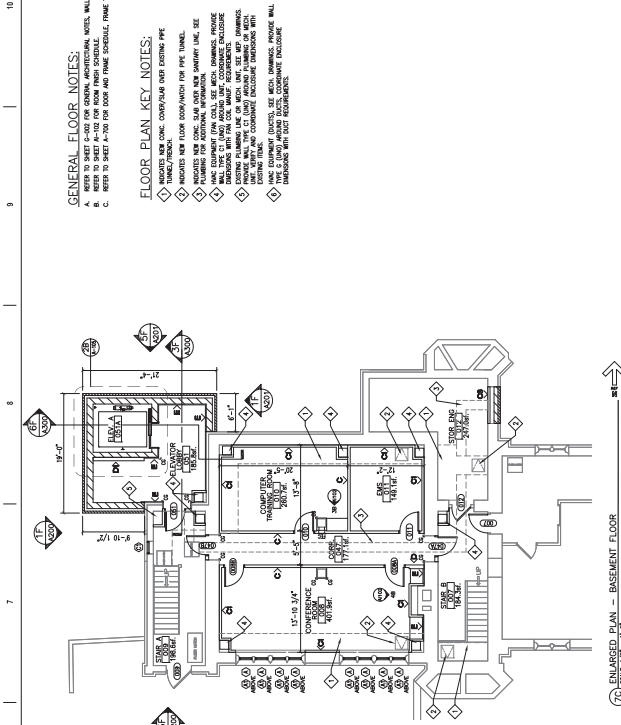
<p>ALL Documents 05/20/2019 Contract Documents 10% Contract Documents 5% Contract Documents 5% Design Development (DD) Schematic Design (SD)</p>	<p>ARCHITECT/ENGINEER OF RECORD CONSULTANT</p>	<p>STAMP </p>	<p>Office of Construction and Facilities Management U.S. Department of Veterans Affairs</p>	<p>Project Name: RENOVATE TOWER BUILDING 1 Project No.: 438-18-102 Rolling Number: 1 Location: Shiloh Falls, SD 57105 Issue Date: 05/20/2019 Checked: RO Drawn: JAC AD-104</p>
---	--	---------------------------	---	---

GENERAL FLOOR NOTES:

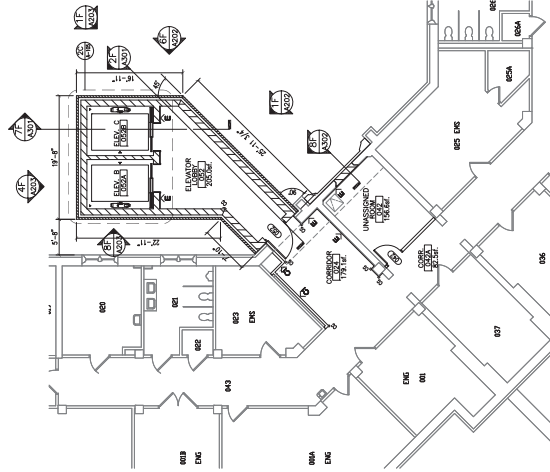
- A. REFER TO SHEET E-102 FOR OPENING MECHANICAL MODEL WALL TYPES.
- B. REFER TO SHEET E-102 FOR DOOR AND FRAME SCHEDULES, FRAME TYPES, WINDOW TYPES.

FLOOR PLAN KEY NOTES:

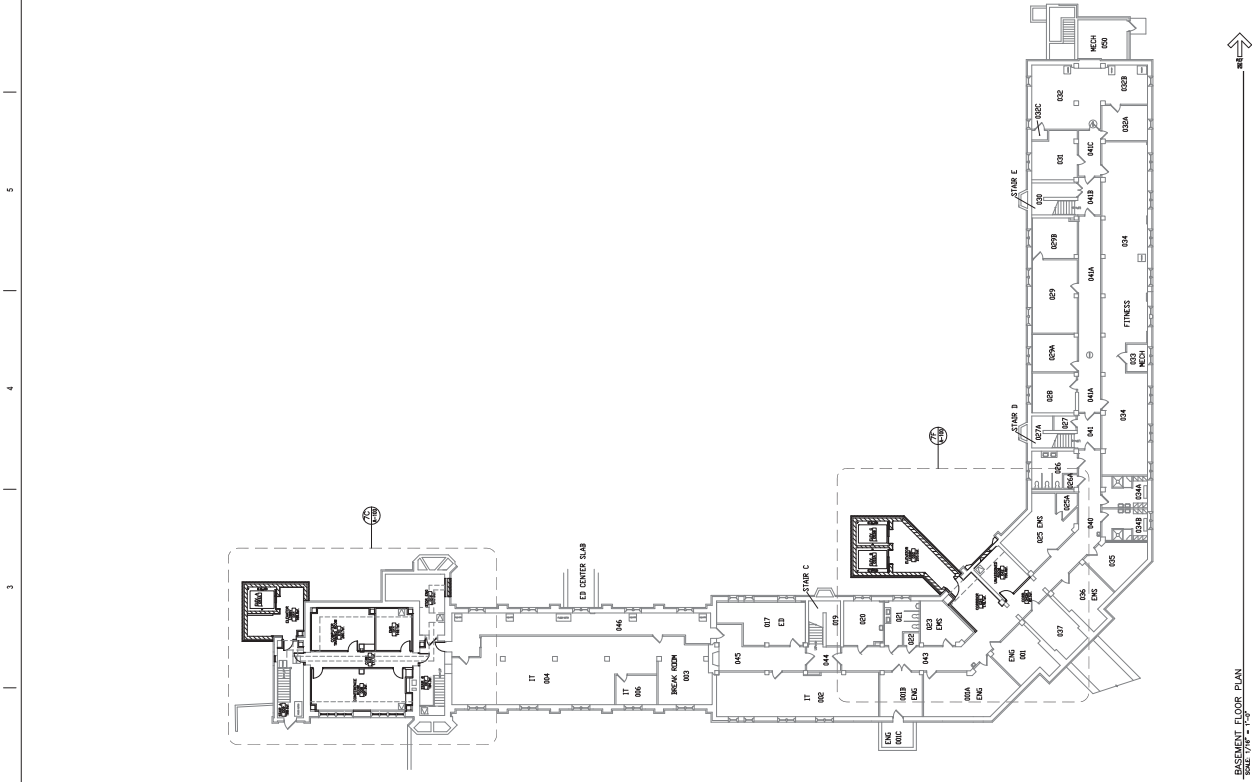
- ◇ FINISH LINE: CONSTRUCTION NOT SHOWN BY FINE LINE
- ◇ FINISH LINE: CONSTRUCTION NOT SHOWN BY FINE LINE
- ◇ FINISH LINE: CONSTRUCTION NOT SHOWN BY FINE LINE
- ◇ FINISH LINE: CONSTRUCTION NOT SHOWN BY FINE LINE
- ◇ FINISH LINE: CONSTRUCTION NOT SHOWN BY FINE LINE
- ◇ FINISH LINE: CONSTRUCTION NOT SHOWN BY FINE LINE
- ◇ FINISH LINE: CONSTRUCTION NOT SHOWN BY FINE LINE
- ◇ FINISH LINE: CONSTRUCTION NOT SHOWN BY FINE LINE
- ◇ FINISH LINE: CONSTRUCTION NOT SHOWN BY FINE LINE
- ◇ FINISH LINE: CONSTRUCTION NOT SHOWN BY FINE LINE
- ◇ FINISH LINE: CONSTRUCTION NOT SHOWN BY FINE LINE



76 - ENLARGED PLAN - BASEMENT FLOOR

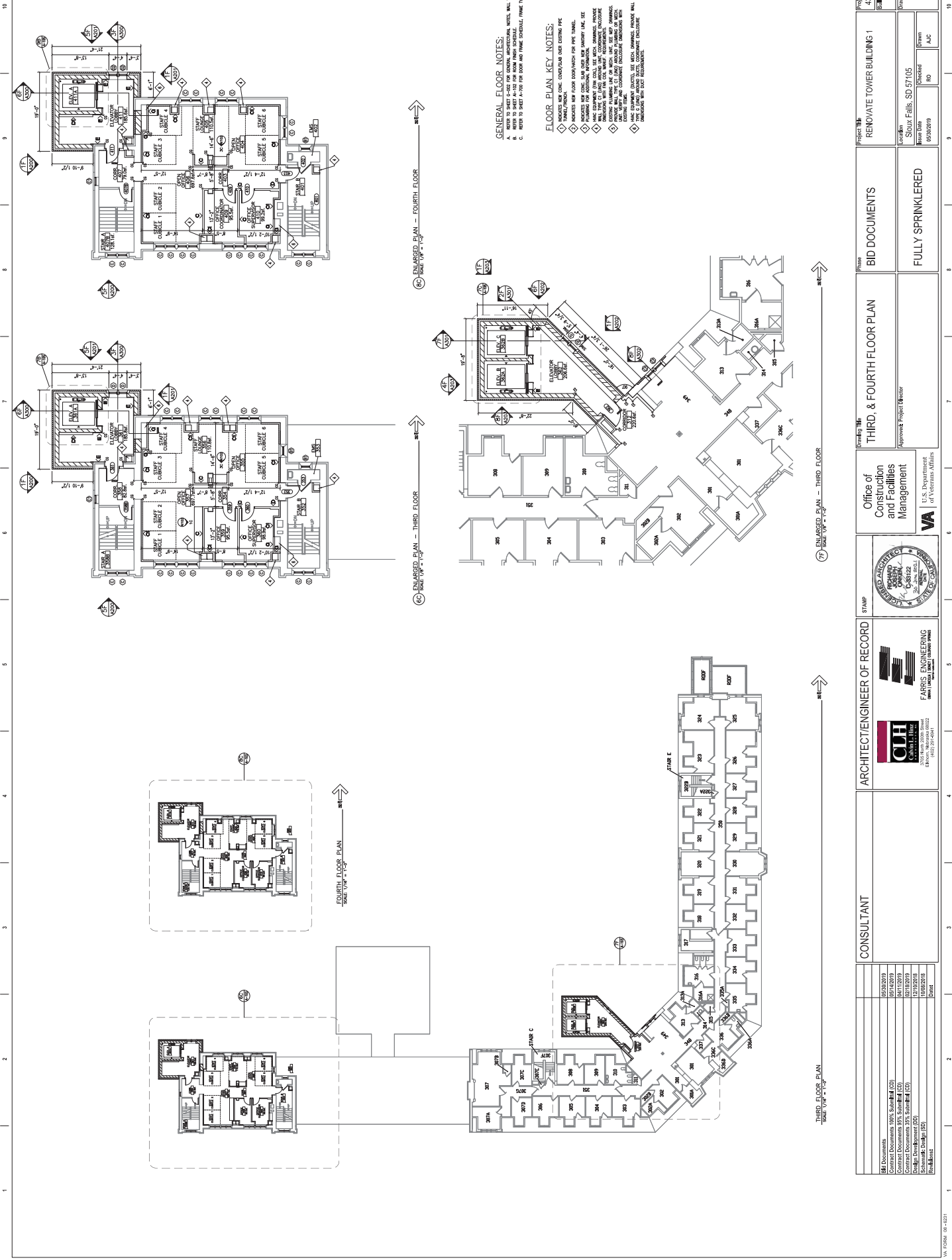


77 - ENLARGED PLAN - BASEMENT FLOOR



BASEMENT FLOOR PLAN

CONSULTANT CLH CONSTRUCTION CONSULTANTS 1100 N. FIFTH AVENUE SUITE 1000 DENVER, COLORADO 80202 PHONE: 303.733.1100 FAX: 303.733.1101 WWW.CLHCONSULTANTS.COM		ARCHITECT/ENGINEER OF RECORD STAMP 		Office of Construction and Facilities Management U.S. Department of Veterans Affairs		Project Title RENOVATE TOWER BUILDING 1		Project Number 438-18-102	
Project Number 05202019		Sheet Number 1		Location Sioux Falls, SD 57105		Contract Number A-100		Revision 05/09/2019	
Checkered RO		Checked JAC		Drawn JAC		Approved Project Director		Scale N/A	
BASEMENT FLOOR PLAN					BID DOCUMENTS		Project Title RENOVATE TOWER BUILDING 1		Project Number 438-18-102
BASEMENT FLOOR PLAN					FULLY SPRINKLERED		Sheet Number 1		Scale N/A



- GENERAL FLOOR NOTES:**
- A. REFER TO SHEET A-100 FOR ROOM FINISH SCHEDULE, FLOOR FINISH, WINDOW TYPES.
 - B. REFER TO SHEET A-100 FOR DOOR AND FRAME SCHEDULE, FLOOR FINISH, WINDOW TYPES.
- FLOOR PLAN KEY NOTES:**
- 1. INDICATES THE TYPE OF CONSTRUCTION AND FINISH TYPE.
 - 2. INDICATES THE TYPE OF CONSTRUCTION AND FINISH TYPE.
 - 3. INDICATES THE TYPE OF CONSTRUCTION AND FINISH TYPE.
 - 4. INDICATES THE TYPE OF CONSTRUCTION AND FINISH TYPE.
 - 5. INDICATES THE TYPE OF CONSTRUCTION AND FINISH TYPE.
 - 6. INDICATES THE TYPE OF CONSTRUCTION AND FINISH TYPE.
 - 7. INDICATES THE TYPE OF CONSTRUCTION AND FINISH TYPE.
 - 8. INDICATES THE TYPE OF CONSTRUCTION AND FINISH TYPE.
 - 9. INDICATES THE TYPE OF CONSTRUCTION AND FINISH TYPE.
 - 10. INDICATES THE TYPE OF CONSTRUCTION AND FINISH TYPE.

THIRD FLOOR PLAN SCALE: 1/4" = 1'-0"		THIRD, & FOURTH FLOOR PLAN		BID DOCUMENTS		RENOVATE TOWER BUILDING 1		Project Number: 488-18-102 Building Number: 1	
FOURTH FLOOR PLAN SCALE: 1/4" = 1'-0"		THIRD, & FOURTH FLOOR PLAN		FULLY SPRINKLERED		Location: Shiloh Falls, SD 57105 Issue Date: 05/09/19		Drawing Number: A-103 Drawn: JAC Checked: RO	
CONSULTANT		ARCHITECT/ENGINEER OF RECORD		Office of Construction and Facilities Management U.S. Department of Veterans Affairs		STAMP ARCHITECT/ENGINEER OF RECORD C-8122 STATE OF SOUTH DAKOTA		APPROVE: Project Director	
05/09/19 02/13/19 02/13/19 02/13/19 02/13/19		05/09/19 02/13/19 02/13/19 02/13/19 02/13/19		05/09/19 02/13/19 02/13/19 02/13/19 02/13/19		05/09/19 02/13/19 02/13/19 02/13/19 02/13/19		05/09/19 02/13/19 02/13/19 02/13/19 02/13/19	