

SINK: S-1



FIGURE
18 GAUGE TYPE 304 STAINLESS STEEL SINK, SINGLE COMPARTMENT COUNTERTOP SELF RIMMING, 2-1/4" RADIUS COVERED CORNERS, UNDERSIDE FULLY UNSERATED. COMPARTMENT AND FAUCET SINK ARE RECESSED 3/16" BELOW OUTSIDE EDGE OF SINK, 3 FAUCET HOLES, 2" DRAIN OPENING. OVERALL DIMENSIONS 17" LONG X 15" WIDE. BOWL DIMENSIONS 14" LONG X 14" WIDE X 6-1/8" DEEP. ELAVAT "ANTON" 011710 OR APPROVED EQUAL.

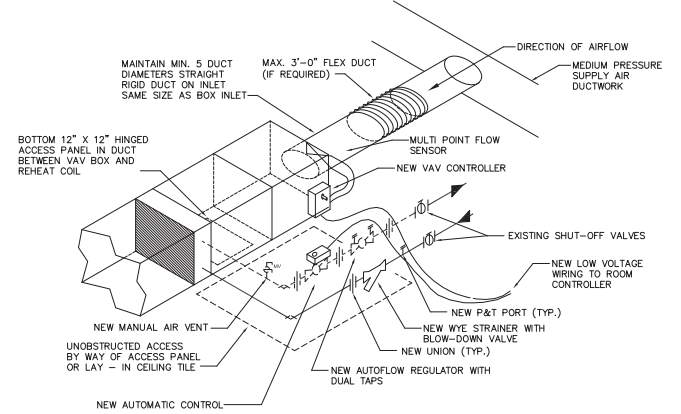
ITEM
BRASS CONSTRUCTION WITH CHROME PLATED FINISH, GRID DRAIN, 4" CENTERSET VANDAL RESISTANT LAVATORY FAUCET WITH 1.2 GPM (5.7 LPM), LAMINAR FLOW NOZZLE, RIGID GOOSENECK SPOUT (8" REACH, 8-1/2" OUTLET HEIGHT, 11-1/2" OVERALL HEIGHT), WHIST BLADE HANDLES AND 1/2" IPS CONNECTIONS, CERAMIC DISC CARTRIDGE WITH 1/4 TURN OPERATION. CHICAGO FAUCET 796-040FCORADOP OR APPROVED EQUAL.

INCLUDE GLASS FILLER ATTACHMENT AT SIDE OF SINK, COORDINATE LOCATION WITH COUNTERTOP INSTALLER. GLASS FILLER TO BE 8" HIGH WITH PUSH BACK ACTUATION. GLASS FILLER SHALL BE EQUIP MODEL 50F-8P OR APPROVED ALTERNATE.

COMPLETE WITH SOLID BRASS STOPS WITH ALL BRASS STEPS AND CHLORAMINE-CHLORINE RESISTANT WASHERS, CHLORAMINE-CHLORINE RESISTANT BRAIDED STAINLESS STEEL FLEXIBLE CONNECTORS (SUPPLY TUBES), STAINLESS STEEL BASKET STRAINER WITH STAINLESS STEEL BASKET AND CAST BRASS LOCK AND COUPLING NUTS, BRASS 4" 17 GAUGE TAPDICE, HEAVY CAST BRASS ADJUSTABLE P-TAP WITH 17 GAUGE TUBULAR WALL BOND, BRASS ESOUTCHIONS. (ALL BRASS MATERIALS SHALL BE CHROME PLATED)

PLUMBING FIXTURE GENERAL NOTES:

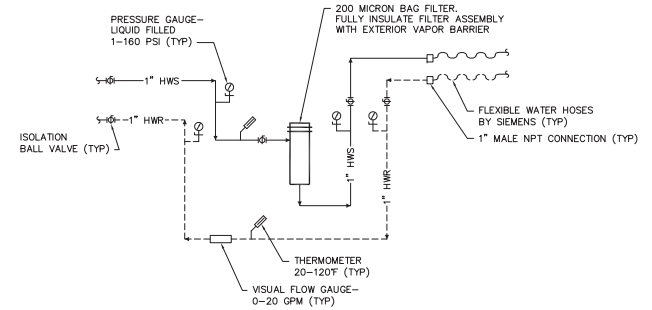
1. PLUMBING FIXTURES SHALL BE OF ONE OF THE MANUFACTURERS INDICATED AND IN ACCORDANCE WITH THE INFORMATION AND MANUFACTURER'S CATALOG NOTS INDICATED. WHERE MANUFACTURER'S CATALOG NOTS HAVE BEEN UPDATED OR DELETED, FIXTURES SHALL BE OF SIMILAR CONFIGURATION AND OF SIMILAR OR BETTER QUALITY THAN THAT INDICATED.
2. VERIFY ALL MOUNTING HEIGHTS OF PLUMBING FIXTURES PRIOR TO ORDERING EQUIPMENT. MOUNTING HEIGHTS SHALL BE AS INDICATED ON ARCHITECTURAL DRAWINGS AND COMPLY WITH ADA REQUIREMENTS.
3. VERIFY FIXTURE COLORS WITH ARCHITECT PRIOR TO ORDERING EQUIPMENT.
4. FOR ALL COUNTERTOP SINKS, CONTRACTOR SHALL COORDINATE WITH CABINET WORK TO INSURE THAT SINK WILL FIT IN CABINET PRIOR TO ORDERING FIXTURE.
5. FIXTURE DRAWINGS DEPICTED MAY NOT NECESSARILY BE AN ACCURATE DEPICTION OF ACTUAL MODELS DUE TO RECENT PRODUCT UPDATES.
6. ALL FIXTURE STOPS SHALL BE LOOSE KEY.



- NOTES:**
1. LOCATE VAV CONTROLLER, TERMINAL PANEL, AND HEATING CONTROL VALVE IN PROXIMITY OF EACH OTHER FOR EASY ACCESSIBILITY.

NEW VAV BOX DETAIL 1

NO SCALE



- GENERAL NOTES:**
1. INSTALL BAG FILTER AT MAX. 5' TO TOP OF FILTER ASSEMBLY.
 2. CONTRACTOR TO SUPPLY ALL COMPONENTS. REFER TO SIEMENS DRAWINGS FOR PREFERRED VENDOR ORDERING INFORMATION FOR ALL COMPONENTS LISTED ABOVE.

CHILLED WATER PIPING DETAIL 2

NO SCALE

ADDENDUM NO. 1	11/21/2018
BID DOCUMENTS	10/10/2018
CONSTRUCTION DOCUMENTS 100% SUBMITTAL - UPDATE	9/28/2018
CONSTRUCTION DOCUMENTS 100% SUBMITTAL	9/7/2018
DESIGN DEVELOPMENT 90% SUBMITTAL	8/3/2018
SCHEMATIC DESIGN 30% SUBMITTAL 2	7/5/2018
SCHEMATIC DESIGN 30% SUBMITTAL	6/6/2018
Revised	Drawn

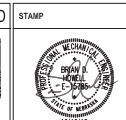
CONSULTANT

Mechanical/Electrical Engineering
Farris Engineering
12700 W Dodge Road
Omaha, NE 68154
(402) 330-0900
Robert Hovory

Structural Engineering
Shaffer & Stevens, P.C.
9910 N 48th Street
Omaha, NE 68152
(402) 455-7688
Dann Shaffer

ARCHITECT/ENGINEER OF RECORD

A/E/C
CLH Architects
3705 N 200th St
Elkhorn, NE 68022
(402) 291-6941
Tim Weiner



Drawing Title	Mechanical Schedules
Approved Project Director	

Phase	BID DOCUMENTS
FULLY SPRINKLERED	

Project Title	Second CT Scanner Site Prep Design	Project Number	438-18-103
Location	Stouffville, SD	Drawing Number	5
Issue Date	October 10, 2018	Checked	BOH
		Drawn	AMM
			M-701

