

Sioux Falls VAHCS  
Halls & Walls  
Project Number 438-



INTERIOR FINISH MATERIALS  
BASIS OF DESIGN DOCUMENT

---

January 31, 2019

Sioux Falls VA Health Care  
2501 W 22<sup>nd</sup> Street  
Sioux Falls, SD 57105

Main phone: 605-336-3230



Facility Planner:

Crystal Dobbins

[Crystal.Dobbins@va.gov](mailto:Crystal.Dobbins@va.gov)

Interior Design:

Sasha Richardson

[Sasha.Richardson@va.gov](mailto:Sasha.Richardson@va.gov)

605-336-3230 ext 6669

Interior Finishes – Criteria: Pages 5 - 22

**Use Halls & Walls Finish Schedule for complete list of affected areas; including the following:**

Ground Floor Corridors/Waiting rooms/Elevator Lobby/Elevators: F03-5, F04-5A, F04-5, B76-5, C01-5, C02-5, C03-5, C04-5, C30-5, C20-5, C21-5, C18-5

Ground Floor/Pharmacy Admin complex: B82-5, B83-5, B83A-5, B84-5, B85-5, B85A-5, B86-5, B89A-5, B95-5

1<sup>st</sup> Floor Corridors/Elevator Lobby/Public Restrooms: 184-5A, 186-5, 132-5, 187- , 153-5, 155-5:

2<sup>nd</sup> Floor Elevator Lobby: 246-5

2<sup>nd</sup> Floor Inpatient Corridors/Conference Room/Family Waiting Room/Patient Rooms: 287A-5, 227-5, 202-5, 203-5, 204-5, 205-5, 206-5, 207-5, 208-5, 230-5, 231-5, 232-5, 233-5, 234-5, 235-5, 236-5, 237-5

2<sup>nd</sup> Floor Community Living Center (CLC2): 248-5, 248A-5, 252-5, 252A-5, 253-5, 254-5, 254A-5, 256-5 (Dining/Living Room), 263-5, 263A-5, 264-5, 265-5, 265A-5, 266-5, 272-5, 272A-5, 273-5, 274A-5, 274-5, 275-5 (Hospice), 276-5, 276A-5, 281-5, 281A-5, 282-5, 283-5, 283A-5, 284-5, 288-5, 289-5, 289A-5, 290-5, 291-5

3<sup>rd</sup> Floor Elevator Lobby: 395-5

3<sup>rd</sup> Floor Inpatient Corridors/Conference Room/Family Waiting Room/Patient Rooms: 395A-5, 331-5, 302-5, 303-5, 304-5, 305-5, 306-5, 307-5, 308-5, 334-5, 335-5, 336-5, 337-5, 338-5, 339-5, 340-5, 341-5

3<sup>rd</sup> Floor Community Living Center (CLC3): 353-5, 353A-5, 357-5, 357A-5, 358-5, 359-5, 359A-5, 361-5 (Dining/Living Room), 365-5, 365A-5, 366-5, 367-5, 367A-5, 368-5, 374-5, 374A-5, 375-5, 376-5, 376A-5, 377-5 (Hospice), 378-5, 378A-5, 383-5, 383A-5, 384-5, 385-5, 385A-5, 386-5, 388-5, 389-5, 390-5, 396-5, 398-5

4<sup>th</sup> Floor Corridors/Elevator Lobby/Public Restrooms/Waiting Rooms/Check-In: 408-5, 403-5, 401-5, 445-5, 473-5, 483-5, 483A-5, 484-5, 485-5, 487-5, 488-5, 442-5, 442A-5, 436-5, 448-5, 449-5

### **RF-1 Rubber Flooring**

For use on Ground Floor: F03-5, F04/F04A-5, C01-5, C02-5, C03-5, C04-5, C30-5, B76-5, C20-5

Manufacturer: Nora

Product: Norament w/ Microbeveled Edge

Pattern: Arago                      Color: Calm 5178

Tile size: 40"x20"                      Product thickness: 3.5mm

<https://www.nora.com/global/en/products/norament-926-arago>



### **RF-2 Rubber Flooring**

For use on Ground Floor: F03-5, F04/F04A-5, C01-5, C02-5, C03-5, C04-5, C30-5, B76-5, C20-5

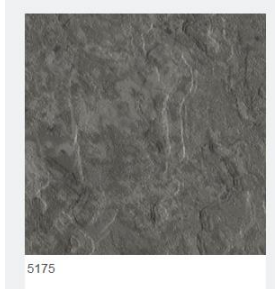
Manufacturer: Nora

Product: Norament w/ Microbeveled Edge

Pattern: Arago                      Color: Unity 5175

Tile size: 40"x20"                      Product thickness: 3.5mm

<https://www.nora.com/global/en/products/norament-926-arago>



### **RF-3 Rubber Flooring**

For use in all CLC2 & CLC3 patient rooms, corridors, dining rooms and nurses' Stations: 248, 252, 253, 254, 256, 263, 264, 265, 266, 272, 273, 274, 275, 276, 281, 282, 283, 284, 288, 289, 290, 291, 353, 357, 358, 359, 361, 365, 366, 367, 368, 374, 375, 376, 377, 378, 383, 384, 385, 386, 388, 389, 390, 396, 398

Manufacturer: Nora

Product: Noraplan

Pattern: Valua                      Color: Sandbar 6721

Roll dimensions: Art. 175A 39.37' x 48"                      Product thickness: 3.0mm

<https://www.nora.com/global/en/products/noraplan-valua>



### **RF-1 Rubber Flooring**

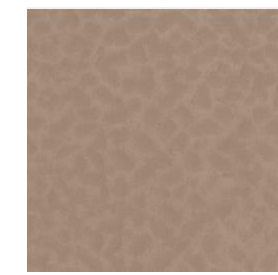
For use on Ground Floor: C30-5—inside elevators

Manufacturer: Nora

Product: Norament

Pattern: Hammered                      Color: Fawn 6172

Tile size: 20"x20"                      Product thickness: 3.2mm



## CPT-1 CARPET TILE

For use in Primary Care waiting room F03-5, F04-5

Manufacturer: Philadelphia Commercial

Size: 18" x 36" Modular Tile

Install: Monolithic

Style: Straight Shift 54810

Color: Screw

Fiber: Eco Solution Q® Nylon

Dye Method: 100% Solution Dyed

Backing: EcoWorx®tile

Tufted Weight: 16

<http://www.phillyqueencommercial.com/ProductSpec/ShowFullSpec/54810/00505#>



## CPT-2 CARPET TILE

For use in 4<sup>th</sup> floor check in & waiting rooms: 401-5, 403-5, 408-5, 445-5, 473-5

Manufacturer: Philadelphia Commercial

Size: 24" x 24" Modular

Install: Boxed In

Style: Shifting Gears 54811

Color: Wedge 00400

Fiber: Eco Solution Q® Nylon

Dye Method: 100% Solution Dyed

Backing: EcoWorx®tile

Tufted Weight: 13

<http://www.phillyqueencommercial.com/ProductSpec/ShowFullSpec/54811/00400>



## CPT-3x Walk-off Carpet -

Existing: Walk-off carpet in front of Information Desk at entrance

Manufacturer: Philadelphia Commercial

Size: 24" x 24" Modular

Install: Ashlar

Style: Step Right In 54860

Color: Saunter 00700

Fiber: EcoSolution Q Nylon

Dye Method: 100% Solution Dyed

Backing: Ecoworx Tile

Tufted Weight: 28.0

<http://www.phillyqueencommercial.com/ProductSpec/ShowFullSpec/54860/00700>



## CPT-3 Walk-off Carpet -

If Replaced: Walk-off carpet in front of Information Desk at entrance

Manufacturer: Philadelphia Commercial

Size: 24" x 24" Modular

Install: Ashlar

Style: Step On It 54587

Color: Move Along 87504

Fiber: EcoSolution Q Nylon

Dye Method: 100% Solution Dyed

Backing: Ecoworx Tile

Tufted Weight: 28.0

<http://www.phillyqueencommercial.com/ProductSpec/ShowFullSpec/54587/87504>



### **LVT- 1 Luxury Vinyl Tile**

For use in 184-5, 186-5, 132-5, 187-1, 485-5, 487-5, 488-5

Manufacturer: Philadelphia Commercial

Item #: In The Grain II      Style: 30/ 5536V

Color: Flaxseed 00568      Dimensions: 6" x 48"

Installation: Direct Glue

Wear Layer: 30 mil      Product thickness: 3.0mm (.120")



[http://www.phillyqueencommercial.com/content/static\\_pdfs/5536V\\_Complete\\_Specs.pdf](http://www.phillyqueencommercial.com/content/static_pdfs/5536V_Complete_Specs.pdf)

### **LVT- 2 Luxury Vinyl Tile**

For use in C21-5, C18-5, 184-5, 132-5, 483-5, 483A-5, 484-5

Manufacturer: Tandus Centiva / Tarkett - commercial luxury vinyl tile Item #: VS 7214-U

Style: Venue Stone UVS      Color: Luna 7214

Dimensions: 12" x 24"      Installation: Unidirectional (same direction) Square

Edge      Standard Emboss

Wear Layer: 20 mil      Product thickness: 3.0mm (.120")



[https://commercial.tarkett.com/en\\_US/collection-C000756-venue/venue-stone-uv-s-luna-7214](https://commercial.tarkett.com/en_US/collection-C000756-venue/venue-stone-uv-s-luna-7214)

### **WSF-1 Welded Seam Sheet Flooring**

For use in Pharmacy Admin complex B82-5, B83-5, B83A-5, B84-5, B85-5, B-85A-5, B86-5, B-89-5, B95-5

Manufacturer: Shannon Specialty Floors

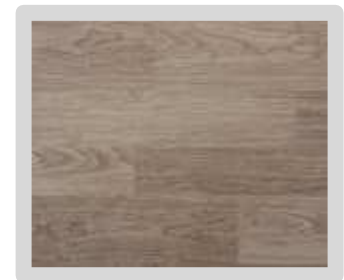
Product: Teknoflor – Heterogeneous Resilient Flooring

Pattern: Forestscapes      Color: Abacoa # 52210

Roll dimensions 5'-11" x 75'      Product thickness: 2.3mm

Heat weld using matching welding rods 12-year

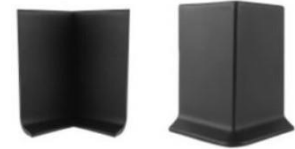
limited commercial warranty



## **RB-1 RESILIENT BASE**

resilient wall base for most areas; except toilet rooms

Manufacturer: Johnsonite    Color: # 32 Pebble  
Material: 700 series - thermoplastic rubber/vinyl blend  
Product: 4" High - Coved Base  
    Thicknesses: 1/8" (3.2mm)  
    Use premanufactured inside and outside corners



IC Standard  
Toe, Inside

OC Standard  
Toe, Outside

## **RESILIENT FLOOR TRANSITIONS**

Use where floor materials of different thicknesses meet;  
Create a smooth transition without a bump to prevent trip hazard; Also  
critical for rolling traffic as well as ADA.

Manufacturer: Johnsonite    Color: # 32 Pebble  
Material: Rubber (not avail in blended material used for base)  
Name: Rolling Traffic Transitions                      Number: CTA-XX-



example only Product

## **AT-1 ACOUSTICAL CEILING TILES**

For installation in 1<sup>st</sup> floor lobby, CLCs, and 4<sup>th</sup> floor

Manufacturer: Armstrong  
Style: Cortega - Angled Tegular  
Item: 704    Size: 2' x 2' x 5/8"  
Color: White  
Rating: Class A



<https://www.armstrongceilings.com/commercial/en-us/commercial-ceilings-walls/cortega-lay-in-ceiling-tiles/item/704.html>





**P-1 Interior Paint**

**General wall paint (semi-gloss finish)**

Manufacturer: Benjamin Moore

Color Match to: DV Hidden Cove #0210

Formula: Ultra Spec Scuff-X 487

Application: Rolled



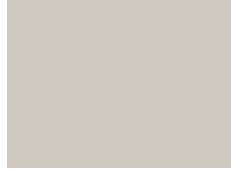
**P-2 Interior Paint**

**General wall paint (semi-gloss finish)**

Manufacturer: Diamond Vogel

Color: Hidden Cove # 0210

Formula: Zero Plus 0 VOC Interior Latex Semi-Gloss



**P-3 Interior Paint**

**General wall paint (semi-gloss finish)**

Manufacturer: Diamond Vogel

Color: Thistle Gray # 0197

Formula: Zero Plus 0 VOC Interior Latex Semi-Gloss



**P-4 Interior Paint**

**Door Frames (semi-gloss finish)**

Manufacturer: Sherwin Williams

Color: DV Drifting Sand # 0218

Formula: Pro Industrial semi-gloss B66W 651



**P-5 Interior Paint**

**Upper accent beams on Ground Floor**

Manufacturer: Zolatone

Color: ZFX-5112 (bronze)

Formula: Luminations



**P-6 Interior Paint**

**CLC Patient Rooms (semi-gloss finish)**

Manufacturer: Diamond Vogel

Color: DV Howdy Neighbor 0385

Formula: Zero Plus 0 VOC Interior Latex Semi-Gloss



**P-7 Interior Paint**

**CLC Patient Rooms (semi-gloss finish)**

Manufacturer: Diamond Vogel

Color: Color Match to SW Tradewind SW6218

Formula: Zero Plus 0 VOC Interior Latex Semi-Gloss



### S-1 SOLID SURFACE

Window sills: 153-5, 155-5, 187-1

Manufacturer: LG HI-MACS®      Material: Acrylic Solid Surface

Color / Pattern: Pantheon M 322      Thickness: 5/8" or 16 mm

Sills: Router edge on front and no overhang on length or depth



### S-2 SOLID SURFACE

Counter tops: 153-5, 155-5, 4<sup>th</sup> floor corridor alcoves

Manufacturer: LG HI-MACS®      Material: Acrylic Solid Surface

Color / Pattern: Milky Way T 009      Thickness: 1.25" or 32 mm



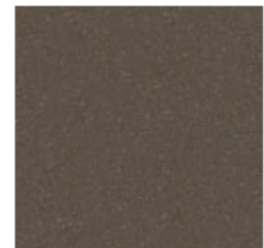
### S-3 SOLID SURFACE

Window sills and countertops in CLC's: 248, 252, 253, 254, 256, 263, 264, 265, 266, 272, 273, 274, 274A, 275, 276, 276A, 281, 282, 283, 284, 288, 289, 290, 353, 357, 358, 359, 361, 365, 366, 367, 368, 374, 375, 376, 376A, 377, 378, 378A, 383, 384, 385, 386, 388, 389, 390

Manufacturer: LG HI-MACS®      Material: Acrylic Solid Surface

Color / Pattern: Umber Granite G605      Thickness: 5/8" or 16mm

Sills: Router edge on front and no overhang on length or depth



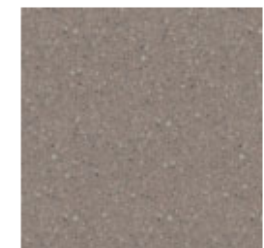
### S-4 SOLID SURFACE

Window sills: 401-5, 403-5, 408-5, 473-5,

Manufacturer: LG HI-MACS®      Material: Acrylic Solid Surface

Color / Pattern: Trail Gray GT912      Thickness: 5/8" or 16mm

Sills: Router edge on front and no overhang on length or depth



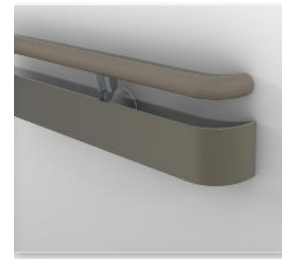
## HANDRAILS

### Public corridors

Manufacturer: Inpro      Series: 3510VV

Top Vinyl: River Rock (0351)

Bottom Vinyl: Slate (0237) Texture: Velvet



3510 Round Handrail

Items: 3512SV and 3513SV is the Stainless Top Return and the Vinyl Bottom Return (color Slate 0237)  
3514SV are the Stainless Top Return and Vinyl Bottom Return (color Slate 0237)  
Round Handrail (top) Vinyl Color: River Rock (0351) Bottom Vinyl Color: Slate (0237)

## RWP RIGID VINYL WALL PROTECTION 1

### Public corridors – both sides – ground, 1<sup>st</sup>, CLCs

Manufacturer: Inpro    Material: Palladium Rigid Vinyl Wall Protection

Style#: 406      Color: #0237 Slate    Thickness: .060

Texture: Velvet      Dimensions: 4' x 8' sheets

Install Height: 48" AFF

Installation: Butt joints 1/16" then use color match caulk on seams;  
trim top of RWP with Horizontal Top Cap boards.

<https://easternus.azureedge.net/~media/Inpro/TDM%20Files/Documents/P/a/l/l/a/Palladium%20SRVSubrailin stall461REV18pdf.ashx?modified=20171207161550>



SLATE  
0237

## RWP RIGID VINYL WALL PROTECTION 2

### Public corridors – both sides – 4<sup>th</sup> floor lobby, corridors and waiting rooms; and columns in B76-5

Manufacturer: Inpro    Material: Palladium Rigid Vinyl Wall Protection

Style#: 406      Color: #0119 Pepperdust    Thickness: .060

Texture: Velvet      Dimensions: 4' x 8' sheets

Install Height: 48" AFF; above 48" on columns

Wall Installation: Butt joints 1/16" then use color match caulk on seams; trim top of RWP with Horizontal Top Cap boards.

<https://easternus.azureedge.net/~media/Inpro/TDM%20Files/Documents/P/a/l/l/a/Palladium%20SRVSubrailin stall461REV18pdf.ashx?modified=20171207161550>



### **RWP RIGID VINYL WALL PROTECTION 3**

#### **Wrapping columns on lower 48" AFF in B76-5**

Manufacturer: Inpro Material: Palladium Rigid Vinyl Wall Protection

Style#: 406 Color: #0351 River Rock Thickness: .060

Texture: Velvet Dimensions: 4' x 8' sheets

Install Height: 48" AFF

Column Installation: Butt joints 1/16" then use color match caulk on seams; trim at 48" AFF with Horizontal boards—flat back.

<https://easternus.azureedge.net/~media/Inpro/TDM%20Files/Documents/P/a/l/l/a/Palladium%20SRVSubrailin%20stall461REV18pdf.ashx?modified=20171207161550>



### **RWP RIGID VINYL WALL PROTECTION 4**

#### **Wall protection in 2S / 3S Med Surg**

Manufacturer: Inpro Material: Palladium Rigid Vinyl Wall Protection

Style#: 406 Color: #0252 Burlap Thickness: .060

Texture: Velvet Dimensions: 4' x 8' sheets

Install Height: 48" AFF

Column Installation: Butt joints 1/16" then use color match caulk on seams; trim top with Horizontal Top Cap Boards.

<https://easternus.azureedge.net/~media/Inpro/TDM%20Files/Documents/P/a/l/l/a/Palladium%20SRVSubrailin%20stall461REV18pdf.ashx?modified=20171207161550>



## CORNER GUARDS

For most all corners

Manufacturer: Pawling Material: Stainless Steel, #4 Satin

Type: CG-51-8 (8' high for full corners); CG-51-4 (4' length for arched areas on 1<sup>st</sup> floor)

Measurement: 2" wide x 0.059" thickness Type: Includes Adhesive

Install Height: Floor—above wall base to ceiling (verify ceiling height to provide size avail)

<https://www.grainger.com/product/PAWLING-CORP-Corner-Grd-34AR47?searchBar=true&searchQuery=34AR47>



## CRASH GUARD

For corridors and elevator lobbies

Manufacturer: InPro Material: Nu Tree Heavy Duty Wall Guard

Color: Weather Wood Product: NT-140

Height: 8" Thickness: 1/2"

Installation: Install 6" above finished floor; Mechanically fasten to walls per installation guide; cap holes w/ matching weather wood to cover fasteners

<https://inprocorp.com/ipc-door-wall-protection/wall-guards/nutree-series>



## DIGITAL WALL PROTECTION

For designated walls on ground floor, first floor women's health corridor, and first floor connecting corridor

Manufacturer: InPro Material: Aspex Printed Wall Protection--Custom

Note: VA to provide images for production of custom digital wall protection

### **HORIZONTAL TOP CAP BOARD 1**

Top edge trim board at Rigid Vinyl Wall Protection: All areas except CLC's

Manufacturer: Inpro    Material: Palladium 3-D Horizontal Top Cap Board

Part: P-3DHTC2

Color: Brushed Nickel 5E026

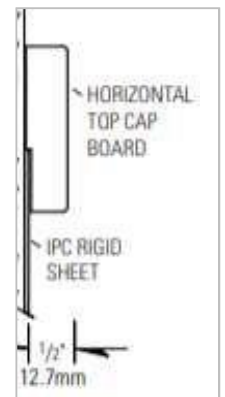
Dimensions: 1/2" thick x 2" H (wide) x 8' length

<https://inprocorp.com/ipc-door-wall-protection/wall-panels/3d-wall-panels#color-samples>



#### **Horizontal Top Cap Board**

*thickness: 1/2", length: 8 ft*  
P-3DHTC2-XXXX - 2" width



### **HORIZONTAL TOP CAP BOARD 2**

Top edge trim board at Rigid Vinyl Wall Protection for CLC's

Manufacturer: Inpro    Material: Palladium 3-D Horizontal Top Cap Board

Part: P-3DHTC4    NOTE: 4" for CLC's only

Color: Smooth Bronze 5E027    Dimensions: 1/2" thick x 4" H (wide) x 8' length

<https://inprocorp.com/ipc-door-wall-protection/wall-panels/3d-wall-panels#color-samples>



### **HORIZONTAL TOP CAP BOARD 3**

Top edge trim board at Rigid Vinyl Wall Protection for 4<sup>th</sup> floor

Manufacturer: Inpro    Material: Palladium 3-D Horizontal Top Cap Board

Part: P-3DHTC2

Color: Pepperdust #0119    Dimensions: 1/2" thick x 2" H (wide) x 8' length

<https://inprocorp.com/ipc-door-wall-protection/wall-panels/3d-wall-panels#color-samples>



### **HORIZONTAL TOP CAP BOARD 4**

Top edge trim board at Rigid Vinyl Wall Protection for 2S / 3S Med Surg

Manufacturer: Inpro    Material: Palladium 3-D Horizontal Top Cap Board

Part: P-3DHTC2

Color: Burlap #0252    Dimensions: 1/2" thick x 2" H (wide) x 8' length

<https://inprocorp.com/ipc-door-wall-protection/wall-panels/3d-wall-panels#color-samples>



## **HORIZONTAL TOP CAP BOARD 5**

Top edge trim board at Rigid Vinyl Wall Protection for Pharmacy offices

Manufacturer: Inpro    Material: Palladium 3-D Horizontal Top Cap Board

Part: P-3DHTC2

Color: Slate 0237    Dimensions: ½” thick x 2” H (wide) x 8’ length

<https://inprocorp.com/ipc-door-wall-protection/wall-panels/3d-wall-panels#color-samples>



SLATE  
0237

## **HORIZONTAL BOARD (FLAT BACK)**

For use on columns in B76-5

Manufacturer: Inpro    Material: Palladium 3-D Horizontal Board

Part: P-3DHB2    Color: #0351 River Rock

Dimensions: ½” thick x 2” H (wide) x 8’ length



## **OUTSIDE CORNERS**

For use on columns in B76-5

Manufacturer: Inpro    Material: Palladium 3-D Trim

Part: P-3DOCF2 (2” wings)    Color: #0351 River Rock

Dimensions: 3/8” thick x 90° angle x 8’ length

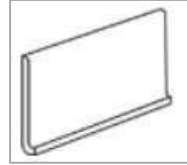




## **PT-1 Porcelain Tile Floor and Base**

for toilet room floors in CLCs, 153-5, and 155-5

Manufacturer: Daltile                      Product: Porcelain Tile  
Pattern: Unity                                Color: Grigio - Textured #P402  
Floor Tile Size: 12" x 24"                Unpolished, straight joint  
Trim: 6" high coved base / overall size 6" x 12" Grout  
Type: Bostik TruColor RapidCure  
Grout Color: Clay # H197  
Max Grout joint: 3/16"



## **PT-2 Porcelain Wall Tile**

for toilet room walls in CLCs, 153-5, 155-5, and 4<sup>th</sup> floor corridor alcoves

Manufacturer: Daltile                      Product: Color-body porcelain  
Pattern: Fabrique                            Color: Crème Linen - # P686  
Wall Tile Size: 12" x 24"                Unpolished, straight joint subtle linear  
pattern - installed with horizontal orientation  
Grout Type: Bostik TruColorRapidCure  
Grout Color: Mobe Pearl # H145  
Max Grout joint: 3/16"



## **PT-3 Wall Tile Accent**

Install PT-3 60" AFF where PT-2 is installed above and below

Manufacturer: Daltile                      Product: Stacked Mosaic Tile Pattern:  
Lucent Skies                                Color: Crimson Dusk LS12  
sheet size: 12" x 12" / mesh mounted (determines grout joint) subtle  
linear pattern - installed with horizontal orientation in a 4" border  
Grout Type: Bostik TruColor RapidCure  
Grout Color: Mobe Pearl # H145

## INTERIOR DOORS

All doors off corridors: Ground floor & 1<sup>st</sup> floor

Manufacturer: Acrovyn – impact resistant doors Color with Acrovyn Non-Rated doors, Model Number SCL5-NR. Color: Fossil Teak #1352  
Match existing size to current frame; use existing hardware



## BARN DOORS

For Installation on Eye Glass Dispensary, Room 438-5

Manufacturer: AD Door Exam Slide w/ lock  
Finish: CSAcrovyn Fossil Teak #1352

<https://specadsystems.com/examslide/>



## TOILET PARTITIONS

For installation in restrooms 153-5 and 155-5

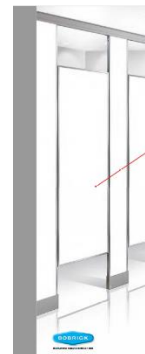
Manufacturer: Bobrick  
Item: HPL Series Accent Series 1530

Collection: Partition Collection  
Color: Standard—Pewter Mesh 4878-38

Warranty: 5-year limited

Stainless steel edge trim; Standard concealed stainless steel hardware (1530\_)

[http://www.bobrick.com/Documents/HPL\\_Brochure.pdf](http://www.bobrick.com/Documents/HPL_Brochure.pdf)



## ACCORDION DOOR

For installation at 4<sup>th</sup> floor check-in

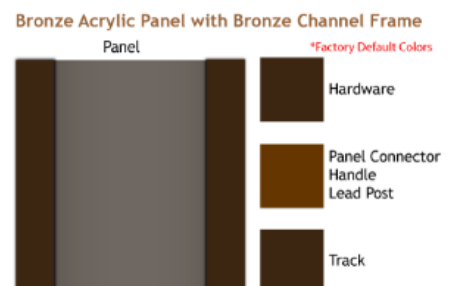
Vendor: Woodfold

Series: 440 / Security Accordion Doors

Color: Bronze hardware/Bronze acrylic panel

<https://woodfold.com/accordion/>

<https://woodfold.com/pdf/accordion/Woodfold-Accordion-16pg-2010-WAC10.pdf>



## **FABRIC 1**

For closets in CLCs—pocket rod

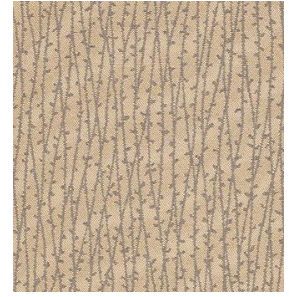
Manufacturer: Momentum

Pattern: Verse

Color: Pyrite

Flame Resistance: ASTM E84\_

Repeat: 7-3/4”L, 14-3/4”W



<https://www.memosamples.com/servlet/quickSearchSpecs.jsp?prodNo=09103587&patternPos=0&colorPos=2&chairImgKey=&backToPage=/servlet/quickSearch.jsp&favorites=&navDirection=detail&searchType=product>

## **PRIVACY CURTAINS**

For privacy curtains in CLCs

Manufacturer: InPro/Clickeze

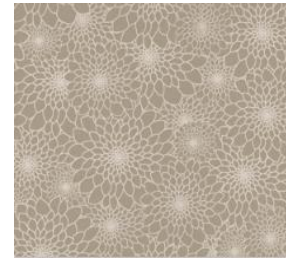
Style: EZE-Swap

Color: Driftwood

Pattern: Daisy

Size: 66”x66” Snap Panel

Qty: 420



<https://inprocorp.com/clickeze-privacy-systems/cubicle-curtains/eze-swap-curtains/eze-swap-cubicle-curtains>

## **PRIVACY CURTAIN MESH PANELS**

For privacy curtains in CLCs

Manufacturer: InPro/Clickeze

Dimensions: 22” high

Sizes: Varying lengths to fit installed tracks

Color: White

Specifications: 50# mesh (.50” mesh size)



Cubicle Curtain Mesh

<https://inprocorp.com/clickeze-privacy-systems/cubicle-curtains/accessories/cubicle-curtain-mesh>

## **PRIVACY CURTAIN CARRIERS**

For use with existing privacy curtain tracks in CLCs

Manufacturer: Imperial Fastener Company (IFC)

Style: IFC-100 Roller Carrier

To fit IFC-98 white tracking; Nylon wheels and axle with bead chain and hard aluminum hook

[http://www.imperialfastener.com/cubicle\\_tracks\\_hardware.html](http://www.imperialfastener.com/cubicle_tracks_hardware.html)



## **SOLAR SHADES / WINDOW COVERING 1**

For use on 1<sup>st</sup> floor connecting corridor 187-1, 153-5, 155-5

Manufacturer: Insolroll

Material: 36% Fiberglass, 64% Vinyl

Style: Sedona – solar screen fabric

Color: Tumbleweed

Density: 5%

Type: Clutch shade with bead loop, bronze fascia

<https://insolroll.com/insolroll-interior-shade-fabrics/>



## **SOLAR SHADES / WINDOW COVERING 2**

For use in CLC dining rooms, nurses' stations

Manufacturer: Insolroll

Material: 42% Fiberglass, 51% Acrylic, 7% Cotton flocked

Style: Daybreak Translucent Fabric

Color: Mica

Type: Clutch shade with bead loop, bronze fascia

<https://insolroll.com/insolroll-interior-shade-fabrics/>



## **BLACK OUT SHADES / WINDOW COVERING 3**

For use in CLC patient rooms and hospice rooms

Manufacturer: Insolroll

Material: 42% Fiberglass, 51% Acrylic, 7% Cotton flocked backing (PVC-free; Fire-rated)

Style: Twilight Blackout

Color: Mica

Type: Clutch shade with bead loop, bronze fascia

<https://insolroll.com/insolroll-interior-shade-fabrics/>



## **SOLAR SHADES / WINDOW COVERING 4**

For use on 4<sup>th</sup> floor waiting rooms

Manufacturer: Insolroll

Material: 37% Fiberglass, 63% Vinyl on Fiberglass

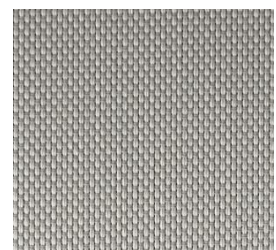
Style: Mesa – solar screen fabric

Color: Pearl Gray

Density: 10%

Type: Clutch shade with bead loop, bronze fascia

<https://insolroll.com/insolroll-interior-shade-fabrics/>



## **BRONZE FASCIA FOR SHADES**

<https://insolroll.com/fascia-system-colors/>



Bronze

## **DECORATIVE SURFACE FINISH 1**

For resurfacing existing casework, trim work, countertops, doors, shelves; including 483A-5, 484-5, 488-5, and Information Desk on ground floor

Manufacturer: 3M

Product: DI-NOC

Collection: Leather

Style #: LE-1109

Fire Rating: Class A



[https://www.3m.com/3M/en\\_US/company-us/all-3m-products/~/All-3M-Products/Design-Construction/Architectural-Design/Architecture-Construction/Architectural-Finishes/?N=5002385+8709317+8710037+8710647+8710818+8711017+3294857497&rt=r3](https://www.3m.com/3M/en_US/company-us/all-3m-products/~/All-3M-Products/Design-Construction/Architectural-Design/Architecture-Construction/Architectural-Finishes/?N=5002385+8709317+8710037+8710647+8710818+8711017+3294857497&rt=r3)

## **DECORATIVE SURFACE FINISH 2**

For resurfacing existing raised lettering on Information Desk, ground floor

Manufacturer: 3M

Product: DI-NOC

Collection: Metallic

Style #: PA-039

Fire Rating: Class A



[https://www.3m.com/3M/en\\_US/company-us/all-3m-products/~/All-3M-Products/Design-Construction/Architectural-Design/Architecture-Construction/Architectural-Finishes/?N=5002385+8709317+8710037+8710647+8710818+8711017+3294857497&rt=r3](https://www.3m.com/3M/en_US/company-us/all-3m-products/~/All-3M-Products/Design-Construction/Architectural-Design/Architecture-Construction/Architectural-Finishes/?N=5002385+8709317+8710037+8710647+8710818+8711017+3294857497&rt=r3)

### DECORATIVE SURFACE FINISH 3

For resurfacing existing casework, trim work, countertops, doors, shelves; including All doors in CLCs and 4<sup>th</sup> floor corridors

Manufacturer: 3M                      Product: DI-NOC

Collection: Fine Wood              Style #: FW-1275

Fire Rating: Class A

[https://www.3m.com/3M/en\\_US/company-us/all-3m-products/~//All-3M-Products/Design-Construction/Architectural-Design/Architecture-Construction/Architectural-Finishes/?N=5002385+8709317+8710037+8710647+8710818+8711017+3294857497&rt=r3](https://www.3m.com/3M/en_US/company-us/all-3m-products/~//All-3M-Products/Design-Construction/Architectural-Design/Architecture-Construction/Architectural-Finishes/?N=5002385+8709317+8710037+8710647+8710818+8711017+3294857497&rt=r3)



### DECORATIVE SURFACE FINISH 4

For resurfacing existing casework, trim work, countertops, doors, shelves; including CLCs Nurses' station countertops and Ground floor Agent Cashiers and Prescription Pick-up counters

Manufacturer: 3M                      Product: DI-NOC

Collection: Abstract                      Style #: AE-1718

Fire Rating: Class A

[https://www.3m.com/3M/en\\_US/company-us/all-3m-products/~//All-3M-Products/Design-Construction/Architectural-Design/Architecture-Construction/Architectural-Finishes/?N=5002385+8709317+8710037+8710647+8710818+8711017+3294857497&rt=r3](https://www.3m.com/3M/en_US/company-us/all-3m-products/~//All-3M-Products/Design-Construction/Architectural-Design/Architecture-Construction/Architectural-Finishes/?N=5002385+8709317+8710037+8710647+8710818+8711017+3294857497&rt=r3)



### DECORATIVE SURFACE FINISH 5

For resurfacing existing casework, trim work, countertops, doors, shelves; including CLCs Nurses' station casework, CLC Hospice Rooms, CLC coffee stations, Ground floor museum cases

Manufacturer: 3M                      Product: DI-NOC

Collection: Fine Wood                      Style #: FW-640

Fire Rating: Class A

[https://www.3m.com/3M/en\\_US/company-us/all-3m-products/~//All-3M-Products/Design-Construction/Architectural-Design/Architecture-Construction/Architectural-Finishes/?N=5002385+8709317+8710037+8710647+8710818+8711017+3294857497&rt=r3](https://www.3m.com/3M/en_US/company-us/all-3m-products/~//All-3M-Products/Design-Construction/Architectural-Design/Architecture-Construction/Architectural-Finishes/?N=5002385+8709317+8710037+8710647+8710818+8711017+3294857497&rt=r3)



## DECORATIVE SURFACE FINISH 6

For resurfacing existing casework, trim work, countertops, doors, shelves;  
Including CLCs Nurses' stations, CLCs dining rooms, and CLCs columns

Manufacturer: 3M

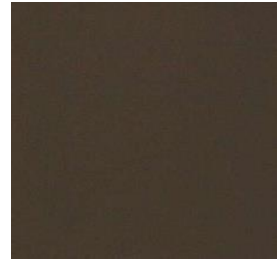
Product: DI-NOC

Collection: Metallic

Style #: PA-389

Fire Rating: Class A

[https://www.3m.com/3M/en\\_US/company-us/all-3m-products/~/All-3M-Products/Design-Construction/Architectural-Design/Architecture-Construction/Architectural-Finishes/?N=5002385+8709317+8710037+8710647+8710818+8711017+3294857497&rt=r3](https://www.3m.com/3M/en_US/company-us/all-3m-products/~/All-3M-Products/Design-Construction/Architectural-Design/Architecture-Construction/Architectural-Finishes/?N=5002385+8709317+8710037+8710647+8710818+8711017+3294857497&rt=r3)



## DECORATIVE SURFACE FINISH 7

For resurfacing existing casework, trim work, countertops, doors, shelves;  
Including Ground floor Information Desk

Manufacturer: 3M

Product: DI-NOC

Collection: Abstract

Style #: FA-1161

Fire Rating: Class A

[https://www.3m.com/3M/en\\_US/company-us/all-3m-products/~/All-3M-Products/Design-Construction/Architectural-Design/Architecture-Construction/Architectural-Finishes/?N=5002385+8709317+8710037+8710647+8710818+8711017+3294857497&rt=r3](https://www.3m.com/3M/en_US/company-us/all-3m-products/~/All-3M-Products/Design-Construction/Architectural-Design/Architecture-Construction/Architectural-Finishes/?N=5002385+8709317+8710037+8710647+8710818+8711017+3294857497&rt=r3)

