

EVEXIA™

LED Patient Bed Light

Catalog Number	
Comments	Type

Evexia is designed to meet the varied requirements for patient rooms and examination spaces. With its LED light source, durable construction and quality components, Evexia delivers reliable performance for demanding healthcare environments.

FEATURES

- Contoured shape enhances performance and simplifies cleaning.
- Die-cast end-caps and extruded aluminum body provide durability.
- Provides ambient and reading illumination with optional night light.
- Antimicrobial finish in three standard colors.
- Multiple switching and control options.



SPECIFICATIONS

Construction: Extruded aluminum body, die-cast end-caps and 16 gauge galvanized steel back-plate and 21 gauge CRS wire way. The nominal 0.080" thick extruded acrylic lens presents a smooth room-side surface for simple wipe-down.

Finish: Polyester powder coat paint finish with an antimicrobial compound additive that inhibits the growth of microbes. Three standard colors are available with custom colors available upon request.

Light Source: The LED source is available in 3000K, 3500K, 4000K and 5000K CCT with standard >80 CRI and optimal life >60,000 hours at 90% lumen maintenance.

Electrical: Available in universal 120V-277V; 50/60 Hz. Contact factory for other supply voltage needs. Each mode of operation is controlled independently by a dedicated driver.

Switching: A variety of options are available for control. A single-pole pull switch provides control for the bottom light compartment. A 4-pole pull switch provides sequential control of both light compartments. Both pull switch options are supplied with an antimicrobial plastic pull cord. The low voltage controller (LVC) options deliver patient control through a patient pillow switch, bed side rail or wall switch(s) (by others) with normally-open momentary dry contacts.

The night light options (NW, NA) can be controlled from a wall switch or patient pillow switch (by others). The NWS or NAS options provide a night light with a 3-way, stainless steel, low voltage switches mounted at either end of the fixture.

The optional Bed Safety Switch (BSS) reduces the potential for luminaire damage from movement of motorized patient beds.

Installation: The 3-step mounting process simplifies installation. The back plate is secured directly to the wall structure or with wall anchors. The wire way houses the electrical components and mounts to the back plate. The shroud hooks onto the back plate and is secured with stainless steel fasteners.

Certifications:
Built and tested to UL1598 standard and bears the cCSAus label for Damp Locations

Warranty: 5 years warranty. Please consult factory for further details.

ORDERING GUIDE

EXAMPLE: EBL4-35-WH-120-LVC22

MODEL	LENGTH	COLOR TEMP	FINISH	VOLTAGE	OPTIONS
EBL Evexia Bed Light	2 2' (27.47")	30K 3000K	WH White	U Universal (120-277V)	NW ^{2,3} Night light white (3000K)
	3 3' (38.50")	35K 3500K	AL Aluminum	120 120V	NA ^{2,3} Night light amber (590nm)
	4 4' (49.76")	40K 4000K	TP Taupe	277V 277V	NWS ^{2,3,4} Night light white (3000K) with 3-way momentary switches located at both ends of the luminaire
		50K 5000K	CC ¹ Custom Color		NAS ^{2,3,4} Night light amber (590nm) with 3-way momentary switches located at both ends of the luminaire

OPTIONS (Continued)	
BSS ^{2,3,9}	Bed Safety Switch
ELL ^{14,10}	Emergency battery pack
GMF	Slow blow fuse
RIF	Radio interference frequency filter
TR	Tamper-resistant hardware

¹ Customer to provide RAL number or color chip to match. Additional set-up charges will be applied to the order.

² 120V models only.

³ Not available for EBL2 model.

⁴ Not available if LVC22 or LVC23 option selected.

⁵ Supplied with 5' plastic, antimicrobial white pull cord.

⁶ Not available with Universal voltage (U). Select 120V or 277V.

⁷ Not available with Pull Switch options (P4L, P4R, P1L, P1R).

⁸ Confirm that the facility's nurse call system supports (3) dry-contact connections for lighting when the intent is to control (3) different lighting functions.

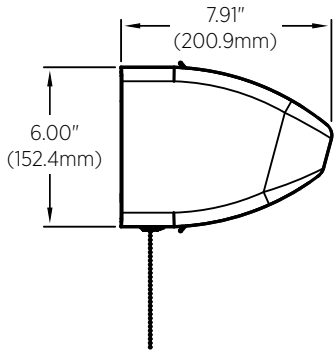
⁹ The Bed Safety Switch (BSS) helps limit damage to luminaire by disconnecting power to motorized patient bed when luminaire is moved.

¹⁰ Available for EBL4 model only.

EVEXIA™
LED Patient Bed Light

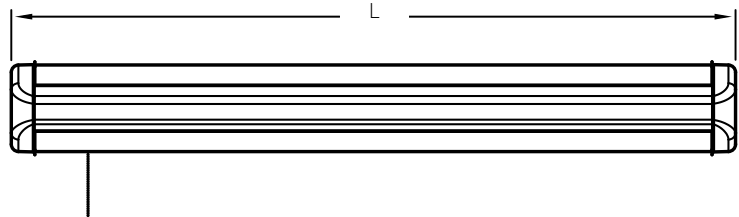
DIMENSIONS

Side View

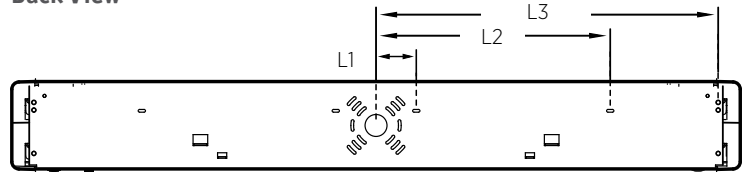


	L	L1	L2	L3
EBL2	27.47" (697.7mm)	2.75" (69.9mm)	12.23" (310.6mm)	-
EBL3	38.50" (977.9mm)	2.75" (69.9mm)	13.25" (336.6mm)	17.74" (450.6mm)
EBL4	49.76" (1263.9mm)	2.75" (69.9mm)	16" (406.4mm)	23.38" (593.9mm)

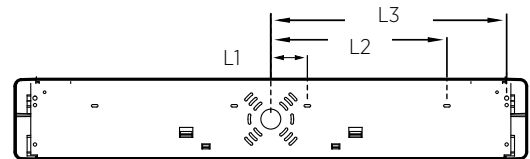
Front View



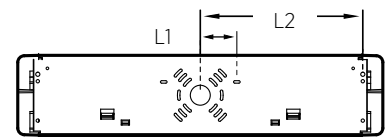
Back View



EBL4



EBL3



EBL2

EVEXIA™

LED Patient Bed Light

LVC SELECTION CHART

The Low Voltage Controller (LVC) option allows control of the luminaire functions from a patient pillow switch, bed side rail, or wall switch which normally-open momentary dry contacts. Depending on the number of modes to be controlled, various control options are available.

Independent	I	Dedicated On/Off control for a single load.
Sequential	S	On/Off Control of two loads by sequentially cycling through them.
Step dim	ST	Stepped light levels in 25% increments with each toggle of the low voltage switch.
Smooth dim	SM	Smooth increase in light level from a starting point of 25% by continuing to press the switch. When released, pressed and held again, the light level decreases until the switch is released.

LVC Ordering Code	FUNCTION		
	Ambient	Reading	Night Light
	(top compartment)	(bottom compartment)	(top compartment)
LVC1		I	
LVC21	I or S*	I or S*	
LVC22	I or S*		I or S*
LVC23		I or S*	I or S*
LVC31	I	I	I
LVC32	S	S	I
LVC DST1	ST	I	I
LVC DST2	I	ST	I
LVC DST3	ST	ST	I
LVC DST4	ST	I	
LVC DST5	I	ST	
LVC DST6	ST	ST	
LVC DSM1	SM	I	I
LVC DSM2	I	SM	I
LVC DSM3	SM	SM	I
LVC DSM4	SM	I	
LVC DSM5	I	SM	
LVC DSM6	SM	SM	

* The selection of individual (I) or sequential (S) control is determined by in-field connections at the control(s).

EVEXIA™

LED Patient Bed Light

PHOTOMETRY

TEST #16.03107 TEST DATE 11/11/16

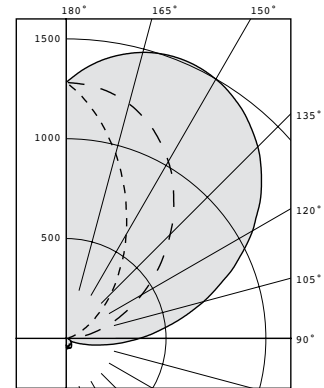
EVEXIA - TOP COMPARTMENT

Luminaire	Evexia patient bed light - Up light only
Ballast	XI040C110V054BPT1
Ballast Factor	1.00
Lamp	132-Philips Fortimo 3500 LED's
Fixture Lumens	3853
Watts	39.8
Efficacy	96.8 Lm/W
Mounting	Wall

ZONAL LUMEN SUMMARY

Zone	Lumens	% Fixt.
0-30	38	1.0
0-40	63	1.6
0-60	110	2.8
0-90	246	6.4
90-120	888	23.1
90-130	1430	37.1
90-150	2635	68.4
90-180	3607	93.6
0-180	3853	100.0

INDOOR CANDELA PLOT



LEGEND:
0-deg: - - - - -
90-deg: - · - · -
180-deg: ————

TEST #16.03108 TEST DATE 11/11/16

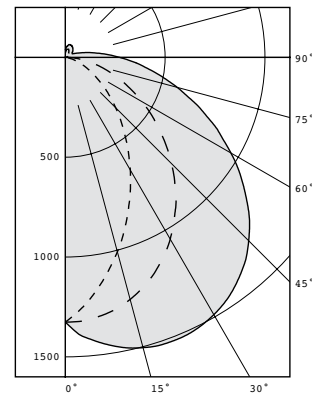
EVEXIA - BOTTOM COMPARTMENT

Luminaire	Evexia patient bed light - Down light only
Ballast	XI040C110V054BPT1
Ballast Factor	1.00
Lamp	132-Philips Fortimo 3500 LED's
Fixture Lumens	3799
Watts	39.9
Efficacy	95.2 Lm/W
Mounting	Wall

ZONAL LUMEN SUMMARY

Zone	Lumens	% Fixt.
0-30	998	26.3
0-40	1606	42.3
0-60	2748	72.3
0-90	3561	93.7
90-120	110	2.9
90-130	136	3.6
90-150	196	5.2
90-180	239	6.3
0-180	3799	100.0

INDOOR CANDELA PLOT



LEGEND:
0-deg: - - - - -
90-deg: - · - · -
180-deg: ————