

RELOCATE REHAB FUNCTIONS PROJECT #656-16-277

St. Cloud VA Health Care System Main Campus, St. Cloud, Minnesota

ORIGINAL DESIGN DRAWINGS

Sheet Schedule

General	G001	TITLE SHEET
	G201	CODE PLAN
Civil		
Landscape	L100	LANDSCAPE PLAN
	L101	IRRIGATION ZONE PLAN
	L200	LANDSCAPE DETAILS
	L300	LANDSCAPE DETAILS
Structural		

Sheet Schedule

Architectural	A001	SYMBOLS & ABBREVIATIONS & WALL TYPES
	A101	FIRST FLOOR PLAN
	A102	PARTIAL PLANS, ELEVATIONS & SCHEDULES
	A201	REFLECTED CEILING PLAN - FIRST FLOOR
	A301	INTERIOR ELEVATIONS
	A401	INTERIOR DETAILS
	A403	INTERIOR DETAILS - MODULAR CASEWORK
	A601	BUILDING & WALL SECTIONS
	A701	EXTERIOR DETAILS
	A702	EXTERIOR DETAILS
	A801	DOOR TYPES, WINDOW TYPES & FRAME DETAILS
	A802	DOOR SCHEDULE
Interiors	I101	FINISH PLAN
	I201	ROOM FINISH SCHEDULE
Plumbing	P101	PLUMBING LOWER LEVEL
	P201	PLUMBING FIRST FLOOR
	P301	WASTE AND VENT RISERS
	P302	DOMESTIC WATER RISERS
	P303	PLUMBING DETAILS
	P304	PLUMBING DETAILS

Sheet Schedule

Mechanical	M001	MECHANICAL SYMBOLS AND ABBREVIATIONS
	M101	MECHANICAL HYDRONIC PIPING - LOWER LEVEL
	M102	MECHANICAL HYDRONIC PIPING - FIRST FLOOR
	M202	MECHANICAL VENTILATION - FIRST FLOOR
	M301	MECHANICAL DETAILS
	M302	MECHANICAL DETAILS
	M303	MECHANICAL DETAILS
	M304	MECHANICAL DETAILS
	M305	MECHANICAL CONTROL DETAILS
	M306	MECHANICAL DETAILS
	M307	MECHANICAL SCHEDULES
Electrical	E001	ELECTRICAL SYMBOLS & ABBREVIATIONS
	E101	POWER & SIGNAL FIRST FLOOR
	E201	LIGHTING FIRST FLOOR
	E300	ONE-LINE DIAGRAM
	E301	PANELBOARD SCHEDULE
	E400	ELECTRICAL SCHEDULES
Fire Protection	FP101	FIRE PROTECTION SYSTEM MAIN FLOOR

GENERAL CONDITIONS

All dimensions on drawings are approximate; Drawings are not to be scaled. It is the responsibility of the contractor to verify all field conditions and physical dimensions that influence the construction area.

It is recommended that contractors visit the proposed construction site prior to submitting their bids and they are encouraged to do so.

Contractor shall adhere strictly to State and Federal Occupational Safety and Health Administration (OSHA) Standards.

Contractor shall park only in the designated parking areas and are not to park on the lawn areas; the only exception is to load or unload supplies or equipment.

Contractor is responsible for the safeguarding of their tools and equipment. All tools and equipment are not to be left unattended and are to be secured at all times when the contractor is not present, or the construction site is not supervised by the contractor.

All VA property is to be safeguarded from damage. Any damaged VA property is to be restored to original condition prior to damage or replaced completely. This includes installation, labor, and procurement expenses.

All demolished material becomes the property and the responsibility of the contractor with the exception of specified items designated either in the plans or verbally requested by the COTR to be retained by the VA.

Offsite disposal of the demolished items is the responsibility of the contractor.

Contractor must control demolition and construction dust from facility by erecting a dust barrier and ventilation with hepa filters. If venting to outside, the contractor will insure negative air pressure is maintained in encapsulated work area. When transporting debris, wet down sufficiently to prevent dust spreading.

If scaffolding is used, it must be used in accordance with (OSHA) regulations and is to be enclosed for the first eight feet above ground at end of each working day, until dismantled. Ladders must be removed and locked up at the end of each working day to prevent unauthorized persons from having access.

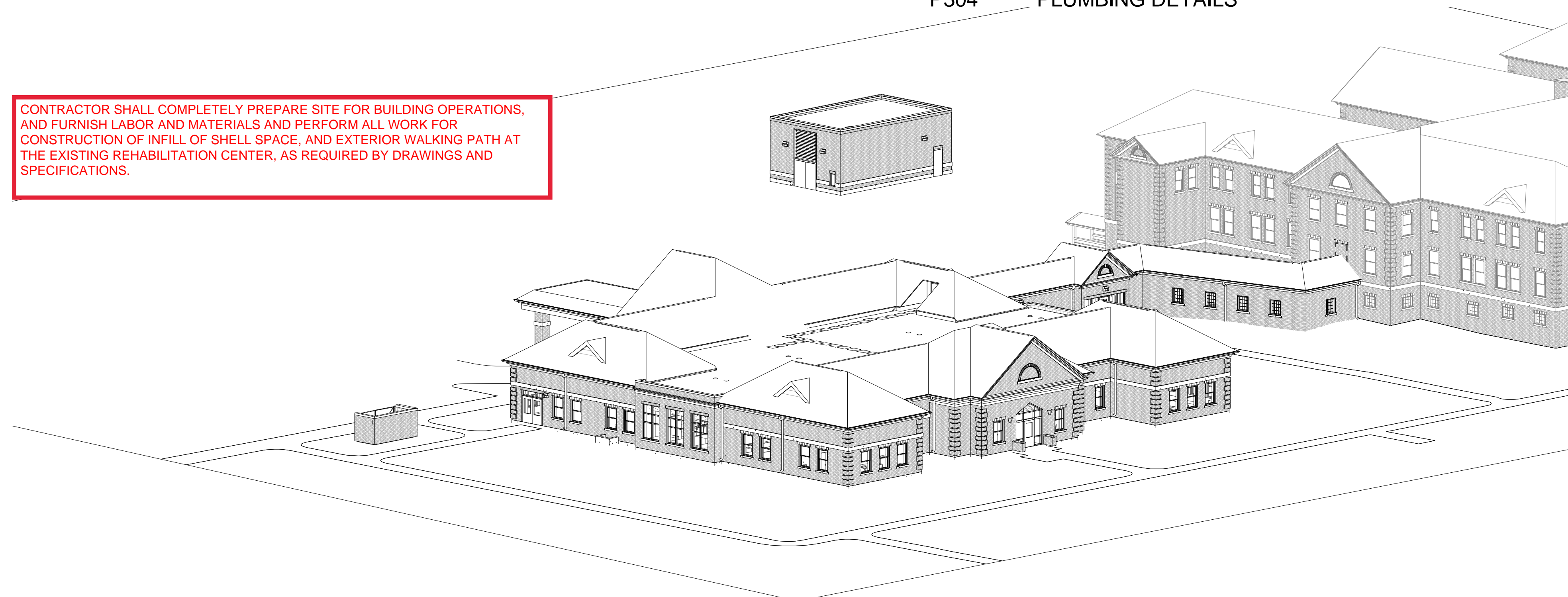
Clean all debris from construction site to the satisfaction of the COTR.

Contractor is responsible for erecting a barrier around work site to prevent patients, staff and visitors from entering construction site. ~~Coordinate construction materials and location of fence with COTR.~~

Contractor is responsible for repairing and replacing any damaged lawn. The restoration will be performed by a landscape contractor that regularly does sodding as part of their business. All damaged lawn will be overcut by 6" or more to accommodate full width rolls of sod. Top soil to be filled and graded to a smooth matching grade of undamaged lawn. Sod to be thoroughly saturated with water upon placement. The contractor is responsible for watering new sod until project acceptance by the COTR.

Access to all buildings and parking areas must be maintained throughout the project.

Contractors are to coordinate all work with the Contracting Officers Technical Representative. (C.O.T.R.)

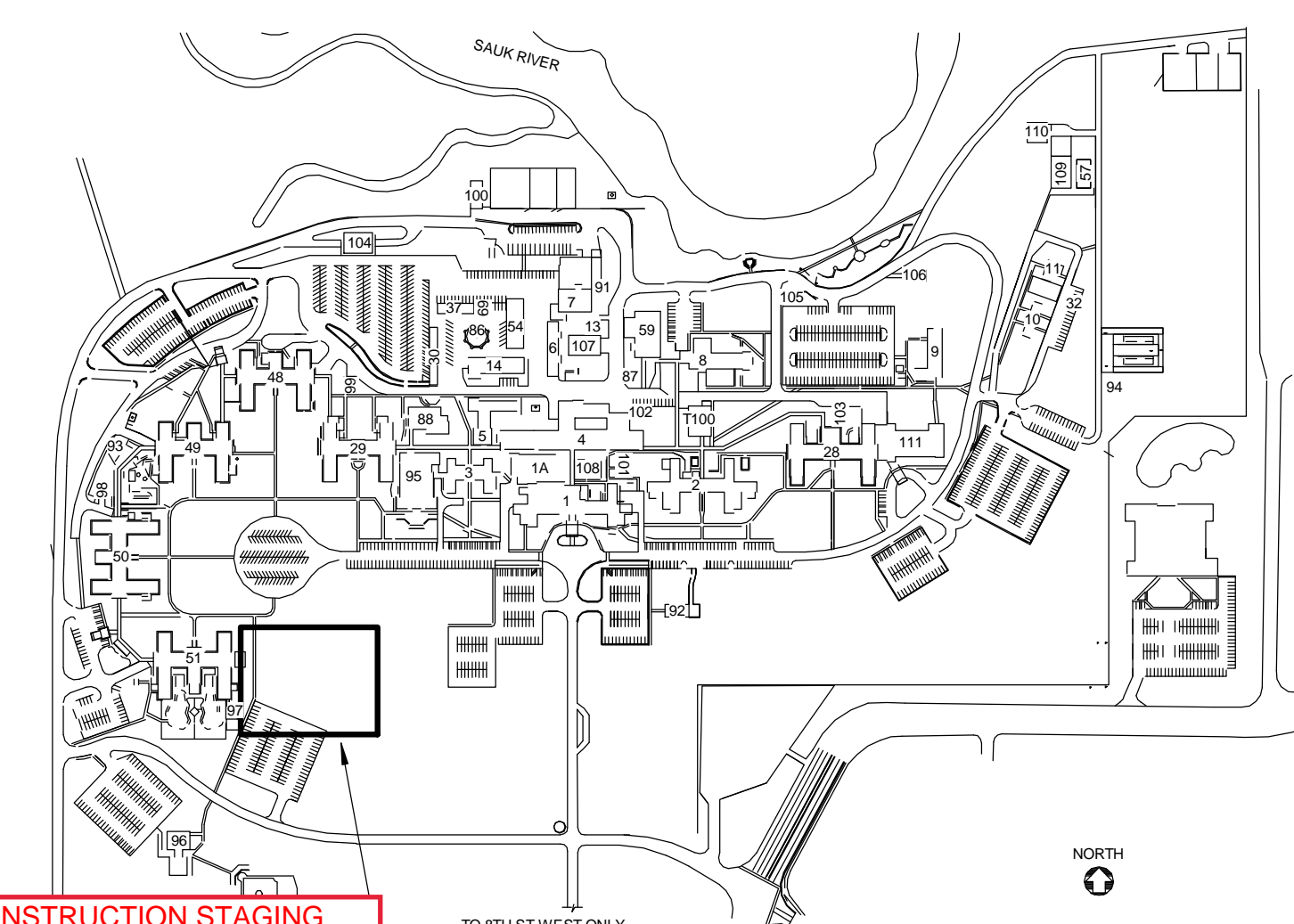


CONTRACTOR SHALL COMPLETELY PREPARE SITE FOR BUILDING OPERATIONS, AND FURNISH LABOR AND MATERIALS AND PERFORM ALL WORK FOR CONSTRUCTION OF INFILL OF SHELL SPACE, AND EXTERIOR WALKING PATH AT THE EXISTING REHABILITATION CENTER, AS REQUIRED BY DRAWINGS AND SPECIFICATIONS.



REHAB BUILDING 116

40'x70' CONSTRUCTION STAGING AREA. PROVIDE IN-GROUND POST MOUNTED (NOT SURFACE MOUNTED) FENCING PER GENERAL REQUIREMENTS SECTION 010000-1.6-1



CONSTRUCTION AREA

No	REVISION	DATE
----	----------	------

CONSTRUCTION DOCUMENTS

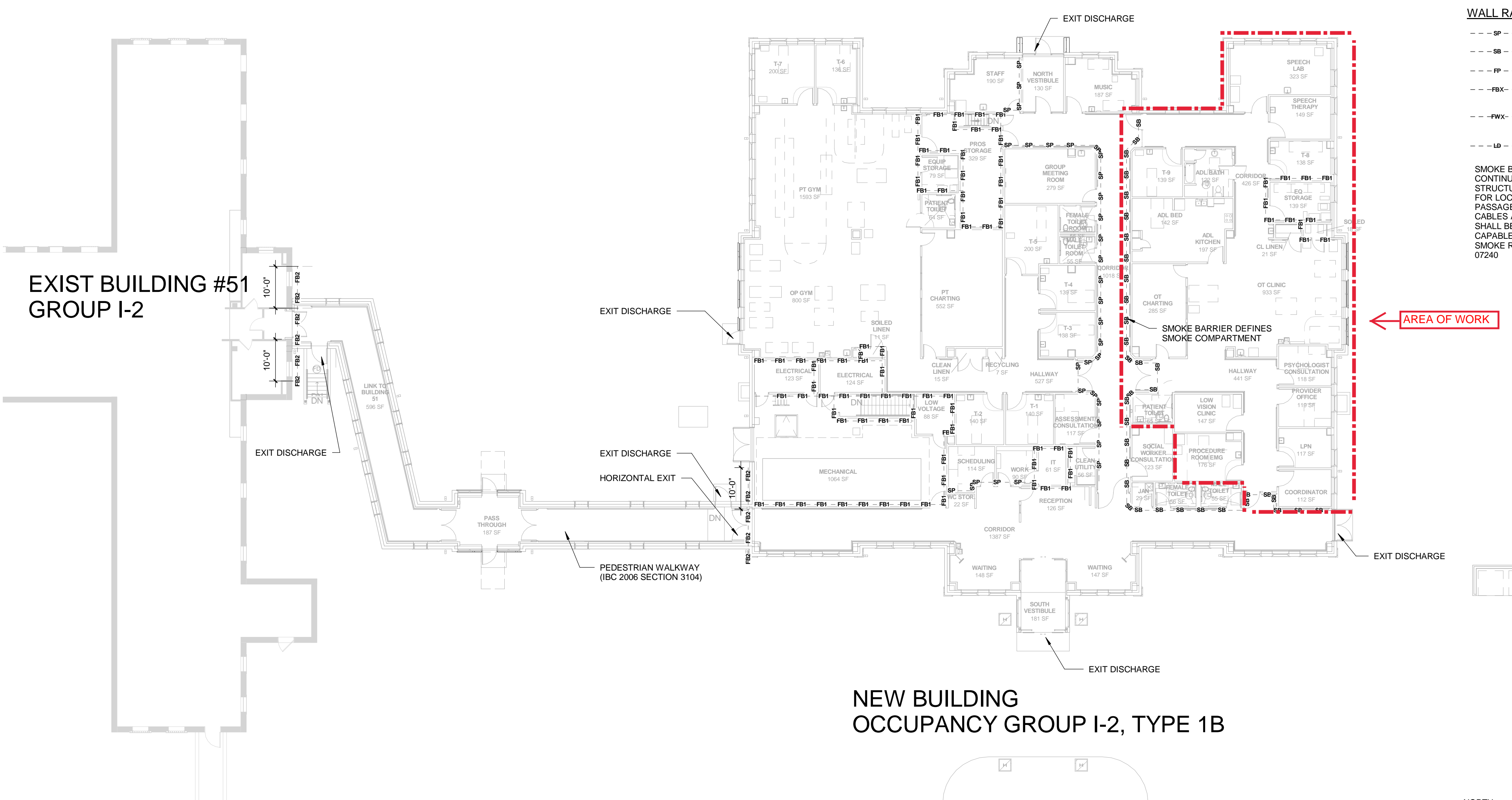
© COPYRIGHT This drawing is the copyrighted work product of architect and team. modification or reproduction of these documents without express written consent of architect is prohibited. The architecture or other services performed or intended by the architect for this project are provided subject to the work and shall not be used for any other project without the express written consent of the architect and in the same locality. Architect retains to warrants, express or implied, in connection with its services.

APPROVED: SERVICE LINE DIRECTOR	DATE:	APPROVED: INFECTION CONTROL NURSE	DATE:
APPROVED: GEIMS COORDINATOR	DATE:	APPROVED: PATIENT SAFETY	DATE:
APPROVED: PROJECTS SECTION MANAGER	DATE:	APPROVED: CHIEF OF POLICE	DATE:
APPROVED: DIRECTOR FMS	DATE:	APPROVED: SAFETY MANAGER	DATE:

DRAWING TITLE	DATE
TITLE SHEET	12/03/2018

PROJECT TITLE	DATE
RELOCATE REHAB SERVICES 656-16-277	12/03/2018
PROJECT NO.	
BUILDING NO.	
CHECKED BY	
DRAWN	
APPROVED: MEDICAL CENTER DIRECTOR	DATE
VA MEDICAL CENTER ST. CLOUD, MN 56303	
DRAWING NO.	
G001	





WALL RATING LEGEND

- SP-- SMOKE PARTITION
- SB-- SMOKE BARRIER
- FP-- FIRE PARTITION (1 HR. RATED)
- FBX-- FIRE BARRIER (1 HR. 2HR. RATED x INDICATES HOUR RATING)
- FWX-- FIRE WALL (1 HR. 2HR. RATED x INDICATES HOUR RATING)
- LW-- LEAD LINED WALL

SMOKE BARRIER PARTITIONS TO BE CONTINUOUS FROM FLOOR TO STRUCTURE ABOVE. REFER TO PLANS FOR LOCATIONS AND EXTENTS. PASSAGE OF PIPES, CONDUITS, DUCTS, CABLES AND SIMILAR EQUIPMENT SHALL BE SEALED WITH A MATERIAL CAPABLE OF MAINTAINING FIRE AND SMOKE RESISTANCE - REFER TO SEC 07240

REGULATORY INFORMATION

	Floor Area	Allowable Area	IBC Building Type	IBC Building Type LSC Building Type	IBC Occupancy Type	IBC Occupancy Type LSC Occupancy Type
Area of New Construction (Building)	17,292 SF					
Total Area (with Pedestrian Walkway (IBC 3104))	19,047 SF	UNLIMITED AREA	1B	[222]	I-2	[Healthcare Occupancy]
Number of Stories	One					

Smoke Compartments

Area A	12,125 sf
Area B	5,167 sf

Building Element	Description	Fire Resistance Rating	UL Reference
Structural Frame	Reinforced concrete columns & beams	2 hour	
	Steel beam & columns (South Vestibule)	1 hour	
Nonbearing exterior walls	6" CMU w/face brick	1 hour	
	Roof construction	8" P/C plank	1 hour
Floor construction	8" P/C plank w/ 2" topping	2 hour	

Partitions

Trash, Soiled Linen, Storage & Mechanical Rooms	Metal framing w/ gypsum board	1 hour	UL-U465
Stair	Metal framing w/ gypsum board	1 hour	UL-U465
Horizontal exit	Metal framing w/ gypsum board	1 hour	UL-U465
Fire Barriers	Metal framing w/ gypsum board	1 hour	UL-U465
Smoke Barriers	Metal framing w/ gypsum board	1 hour	UL-U465
Smoke Partition	Metal framing w/ gypsum board	Non Rated - Smoke Limiting	

Door Openings

Trash, Soiled Linen, Storage & Mechanical Rooms	60 Minute
Stair	60 minute
Horizontal exit	60 Minute
Fire Barriers (1 hour)	60 Minute
Fire Barriers (2 hour)	90 Minute
Smoke Barriers	20 Minute
Smoke Partition	Non Rated - Smoke Limiting

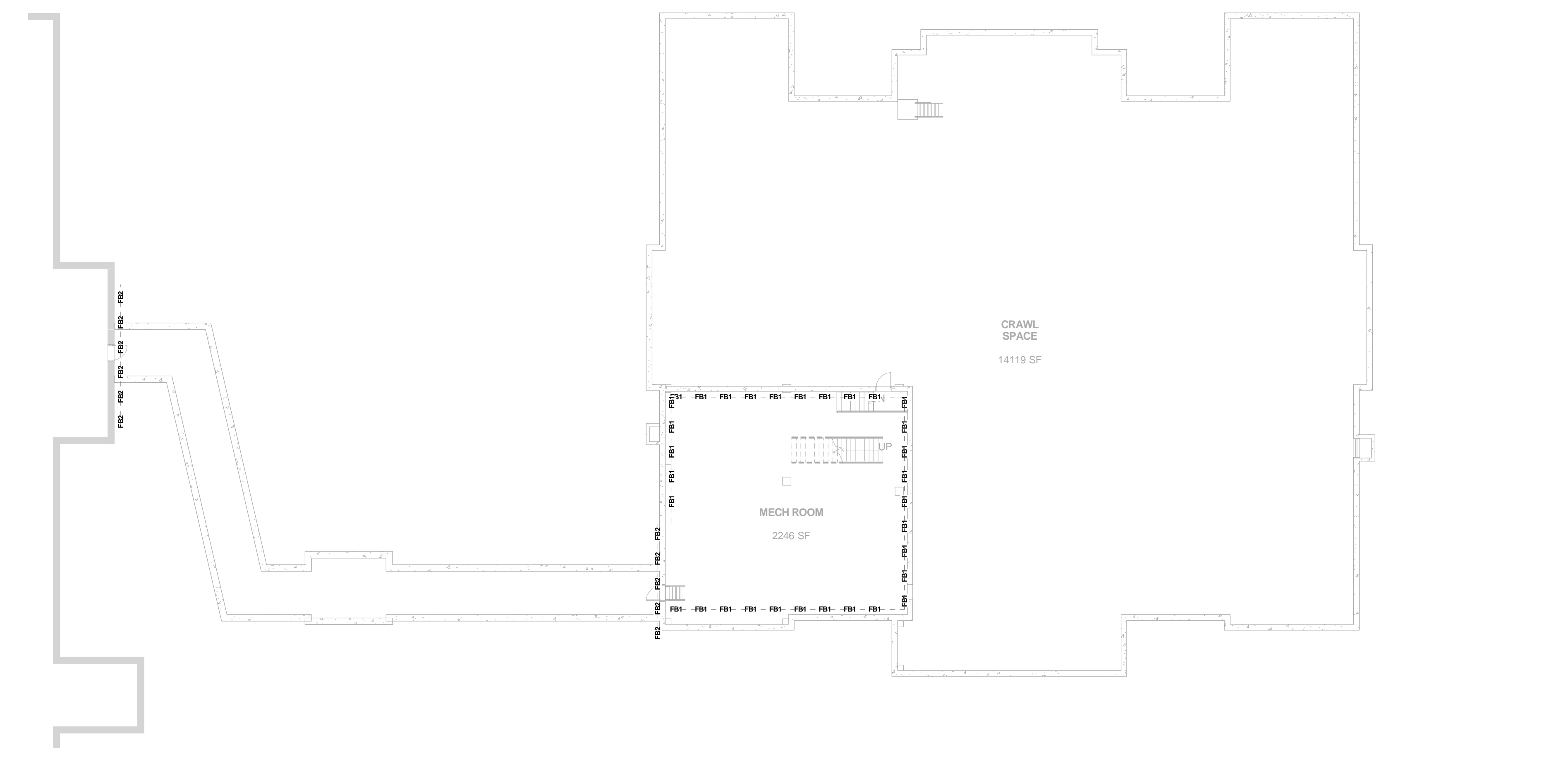
Fire Protection

New Fire Sprinkler Throughout New Areas

Code References

- 2006 International Building Code
- 2006 International Fire Code
- 2006 International Mechanical Code w/ MN Amendments
- 2007 Minnesota State Building Code
- 2009 Minnesota State Plumbing Code
- 2009 Minnesota State Energy Code
- 2008 National Electrical Code
- NFPA 101 2000, Life Safety Code
- NFPA 99 2005, Health Care Facilities
- Americans with Disabilities Act with VA Supplement
- Guidelines for Construction and Equipment of Hospitals and Medical Facilities - American Institute of Architects Committee on Architecture for Health Care 2010
- ASHRAE 90.1 2006
- MN SHPO
- Architectural Barriers Act Accessibility Standards including Barrier Free Design Guide
- Uniform Federal Accessibility Standards
- OSHA
- VA HVAC DESIGN GUIDE
- 2009 INTERNATIONAL PLUMBING CODE

1 CODE PLAN - FIRST FLOOR
G201 1/16" = 1'-0"



2 CODE PLAN - LOWER LEVEL PLAN
G201 1/16" = 1'-0"

Horty Elving
505 East Grant Street, Minneapolis, MN 55404-1490
T 612.332.4422 F 612.344.1282 hortyelving.com

Planning
Architecture
Engineering
Interior Design
Construction Management
Design Build

Horty Elving & Associates, Inc.

I hereby certify that this plan, specification, or report was prepared by me or under my direct supervision and that I am a duly Licensed Architect under the laws of the State of Minnesota.

Steve Magin
Steve Magin License No. 40000

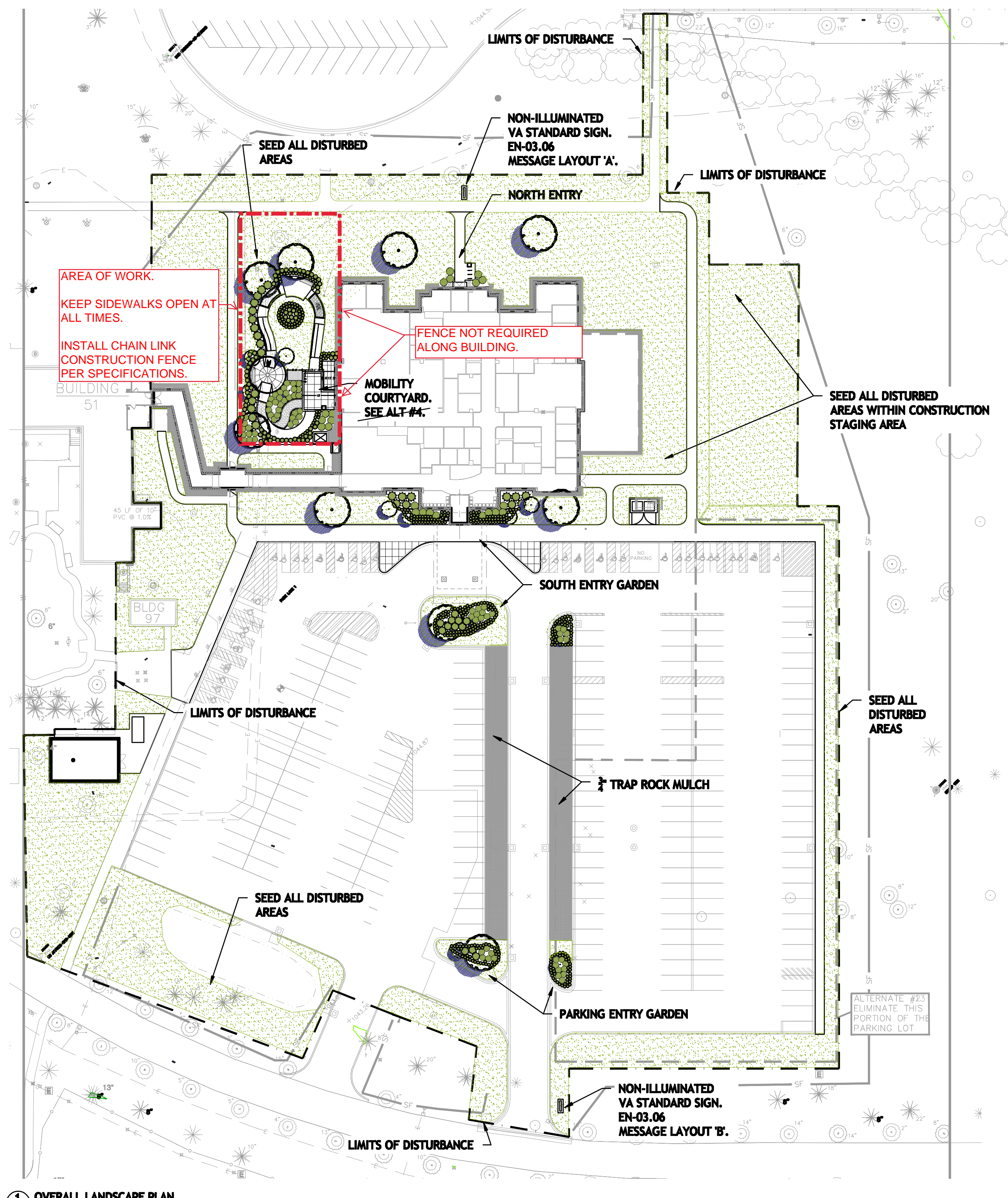
APPROVED: SERVICE LINE DIRECTOR DATE: APPROVED: INFECTION CONTROL NURSE DATE:
APPROVED: GEIMS COORDINATOR DATE: APPROVED: PATIENT SAFETY DATE:
APPROVED: PROJECTS SECTION MANAGER DATE: APPROVED: CHIEF OF POLICE DATE:
APPROVED: DIRECTOR PMS DATE: APPROVED: SAFETY MANAGER DATE:

© COPYRIGHT This drawing is the copyrighted work product of architect and team. modification or reproduction of these documents without written consent is prohibited. The architect or other services performed or provided by the architect for this project are provided subject to the terms and conditions specified by members of the architectural profession practicing under similar circumstances at the time the work was done. Architect retains no warranty, express or implied, in connection with its services.

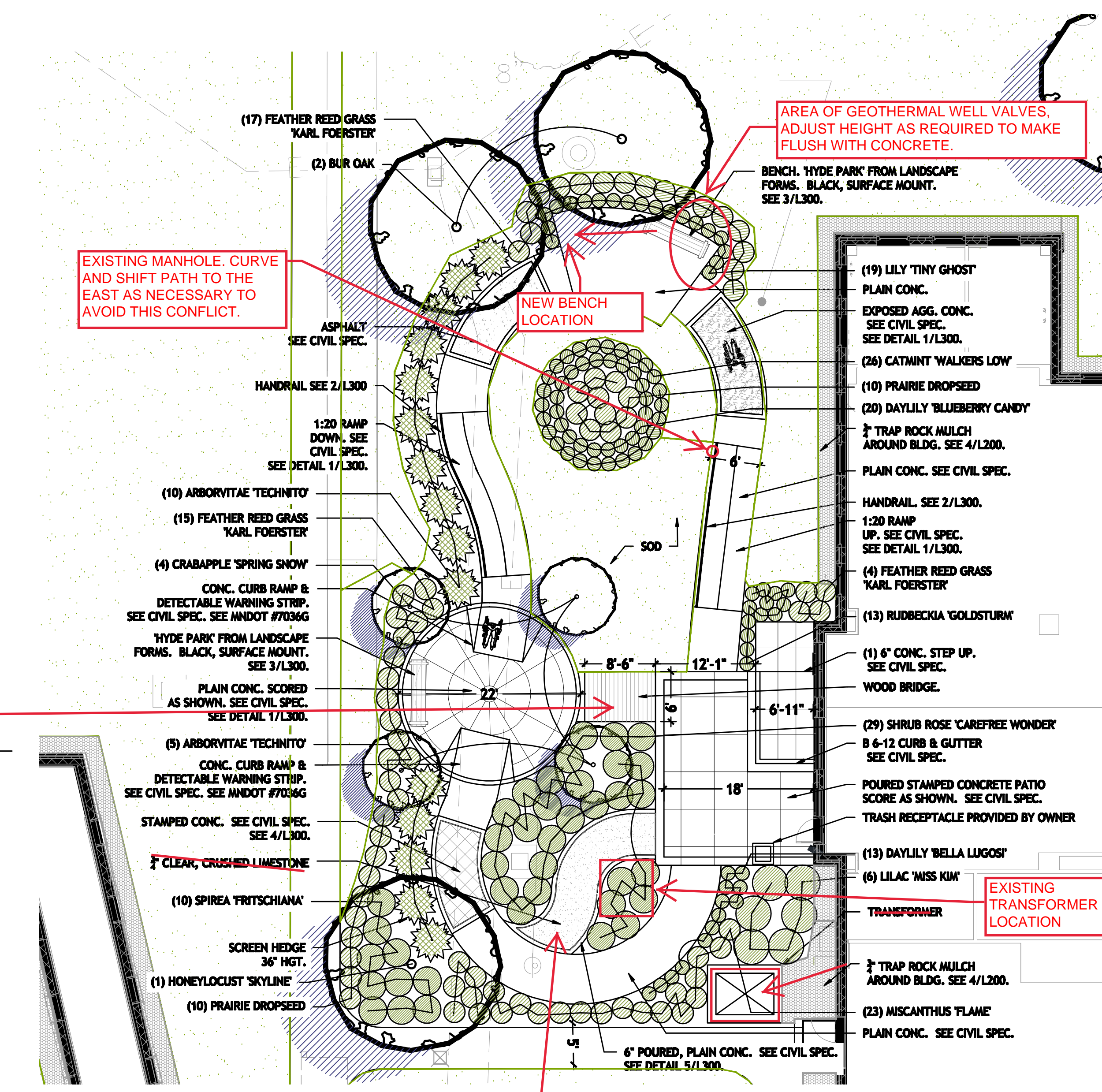
DRAWING TITLE CODE PLAN	PROJECT TITLE RELOCATE REHAB SERVICES 656-16-277	DATE 12/03/2018
APPROVED: CHIEF OF STAFF DATE:	BUILDING No. CHECKED BY: DRAWN:	PROJECT NO.:
APPROVED: MEDICAL CENTER DIRECTOR DATE:	VA MEDICAL CENTER ST. CLOUD, MN 56303	DRAWING NO. G201



NOTE: ALL LANDSCAPE MULCH CHANGED TO 1-1/2" BRYANT RED ROCK.



1 OVERALL LANDSCAPE PLAN
1" = 40'-0"



WOOD BRIDGE: PROVIDE 4X4 TREATED LUMBER (MAX 16" SPACING) ATTACHED TO A 4" CONCRETE SLAB. PROVIDE COMPOSITE DECKING (TREX OR EQUIVALENT) WITH HIDDEN FASTENERS. INSTALL SUCH THAT THERE IS AN EVEN TRANSITION TO THE CONCRETE WALK AREAS ON EITHER SIDE OF THE BRIDGE. FIELD COORDINATE FINAL DETAILS WITH COR AND PROVIDE A DETAILED SHOP DRAWING FOR REVIEW AND APPROVAL.

LIMESTONE PATH NOT TO BE INSTALLED. REARRANGE PLANTINGS TAKEN FROM THE TRANSFORMER AREA. FIELD COORDINATE FINAL LAYOUT WITH COR.

Horty Elving
 505 East Grant Street, Minneapolis, MN 55404-1490
 T 612.332.4422 F 612.344.1282 hortyelving.com

Planning
 Architecture
 Engineering
 Interior Design
 Construction Management
 Design Build
 Harty Elving & Associates, Inc.

ben erickson
 ben@ericksondesign.com
 952.812.392.0902

I hereby certify that this plan, specification, or report was prepared by me or under my direct supervision and that I am a duly Licensed Landscape Architect under the laws of the State of Minnesota.

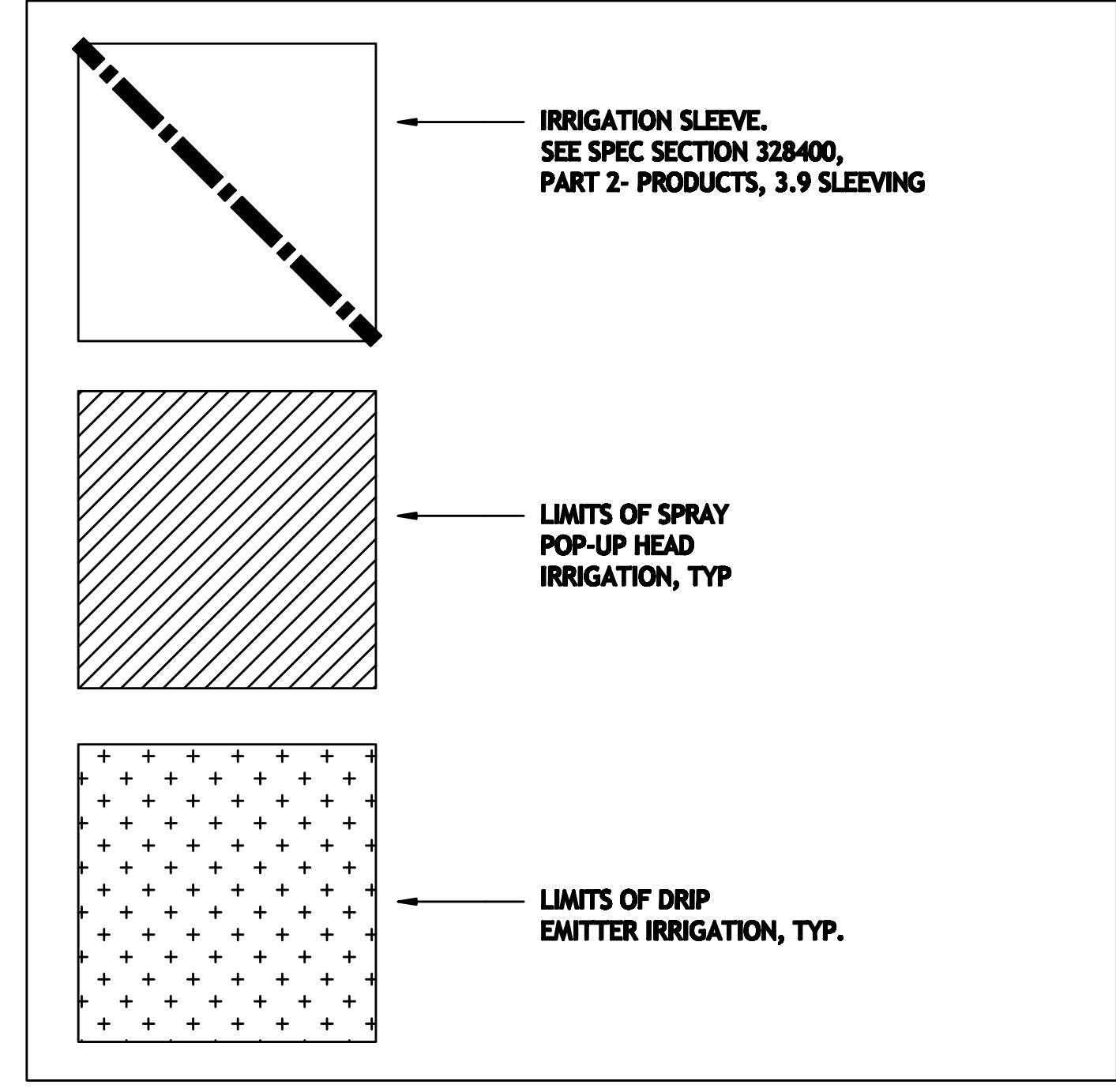
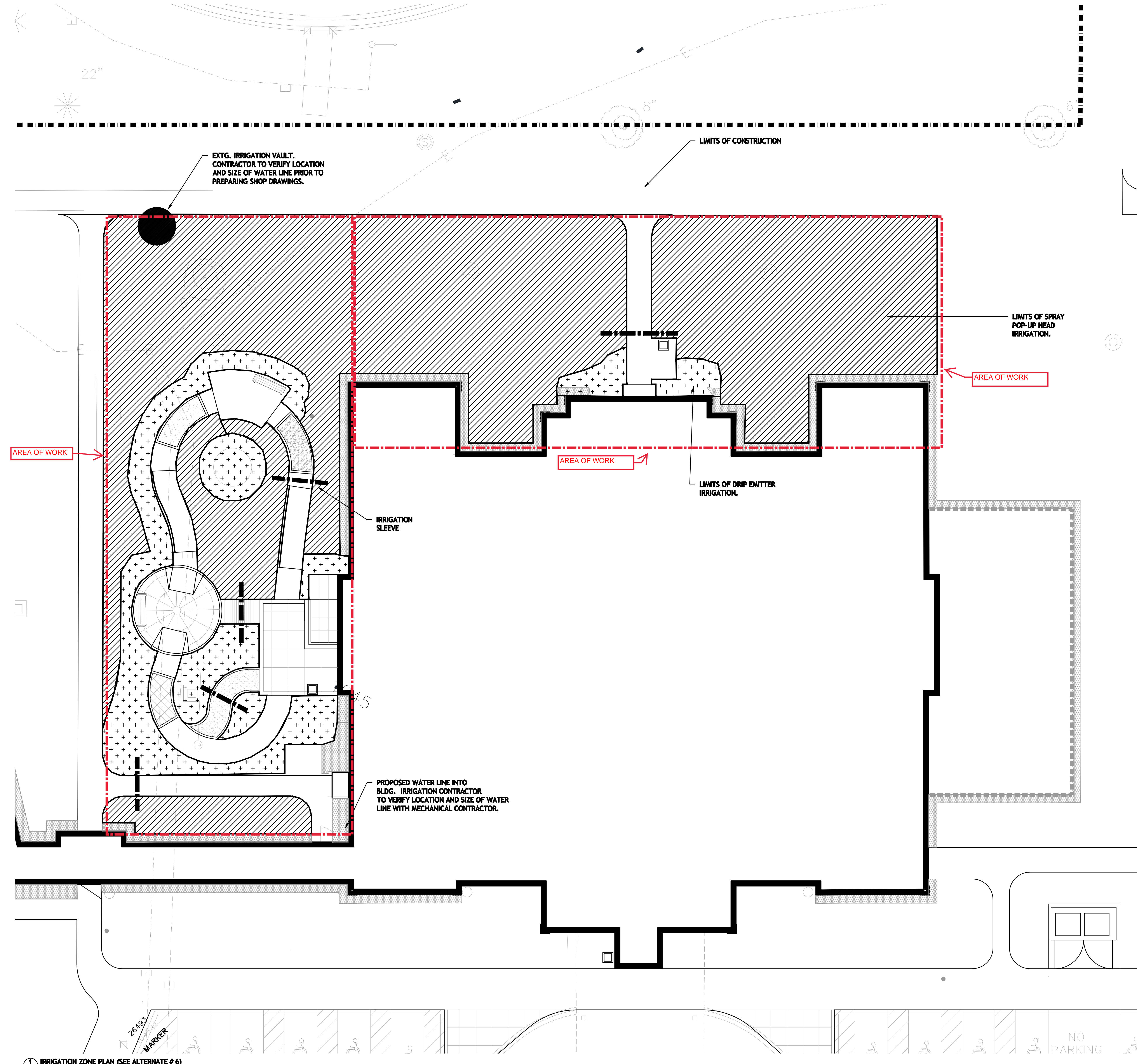
Ben Erickson License No. 8232

APPROVED: SERVICE LINE DIRECTOR	DATE	APPROVED: INSPECTION CONTROL NUMBER	DATE
APPROVED: GRAB COORDINATOR	DATE	APPROVED: PATIENT SAFETY	DATE
APPROVED: PROJECTS SECTION MANAGER	DATE	APPROVED: CHIEF OF POLICE	DATE
APPROVED: DIRECTOR P&B	DATE	APPROVED: SAFETY MANAGER	DATE

DRAWING TITLE	PROJECT TITLE	DATE
LANDSCAPE PLAN	RELOCATE REHAB SERVICES 656-16-277 St. Cloud VA Health Care System	12/03/2018
APPROVED: CHIEF OF STAFF	BUILDING NO.	DESIGNED BY
APPROVED: MEDICAL CENTER DIRECTOR	LOCATION	DRAWING NO.

PROJECT NO.	DRAWING NO.
	L100





2 IRRIGATION ZONE LEGEND
NTS

IRRIGATION NOTES

1. Only hatched areas of the site are to be irrigated. See spec **SECTION 32 84 00 DESIGN/BUILD IRRIGATION SYSTEM**
2. Irrigation system shall be design-build, controlled by performance specification. Landscape architect and Project Engineer shall review shop dwgs prior to installation.
3. Turf irrigation shall be on separate zone(s) from shrub & perennial beds.
5. Irrigation spray shall be directed away from foundations, walls, and paving to the extent possible.
6. See sheet L100 Landscape Plan for locations of sod, perennial, and shrub beds.
7. Irrigation contractor to coordinate with landscape contractor on system installation and scheduling.
8. Irrigation contractor to coordinate with mechanical contractor on stubbing of irrigation water line outside the building and installation of backflow preventer, control boxes, and any work within the mechanical room.
9. Alternate #6- Eliminate entire irrigation system.

3 IRRIGATION NOTES
NTS

1 IRRIGATION ZONE PLAN (SEE ALTERNATE # 6)
1" = 10'-0"

Horty Elving
 Planning
 Architecture
 Engineering
 Interior Design
 Construction Management
 Design Build
 505 East Grant Street, Minneapolis, MN 55404-1490
 T 612.332.4422 F 612.344.1282 hortyelving.com

ben svickson
 ben@svicksondesign.com
 OR 612.382.9902

I hereby certify that this plan, specification, or report was prepared by me or under my direct supervision and that I am a duly Licensed Landscape Architect under the laws of the State of Minnesota.
 Ben Svickson License No. 9938

APPROVED: SERVICE LINE DIRECTOR DATE
 APPROVED: O&M COORDINATOR DATE
 APPROVED: PROJECTS SECTION MANAGER DATE
 APPROVED: DIRECTOR P&B DATE

APPROVED: INSPECTION CONTROL MANAGER DATE
 APPROVED: PATIENT SAFETY DATE
 APPROVED: CHIEF OF POLICE DATE
 APPROVED: SAFETY MANAGER DATE

© COPYRIGHT This drawing is the copyrighted work product of Horty Elving and/or, modification or reproduction of these documents without express written consent of Horty Elving is prohibited. The professional or related services performed or furnished by this engineer or architect and/or his or her staff are not to be used for any other project or purpose without the written consent of Horty Elving and/or his or her staff. Horty Elving and/or his or her staff, in no way shall be responsible.

DRAWING TITLE
IRRIGATION ZONE PLAN

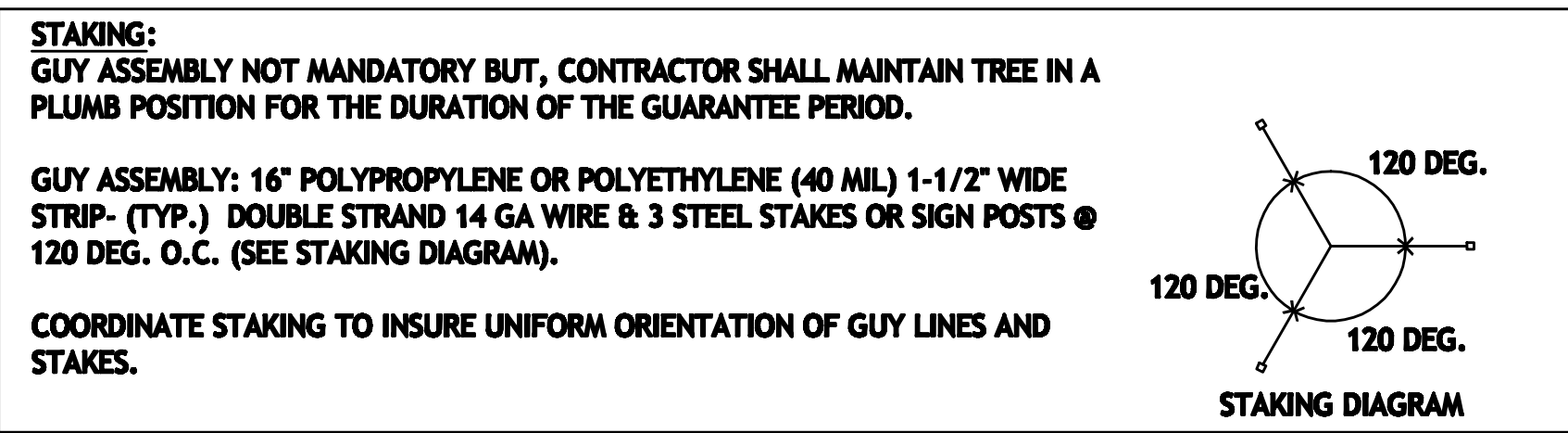
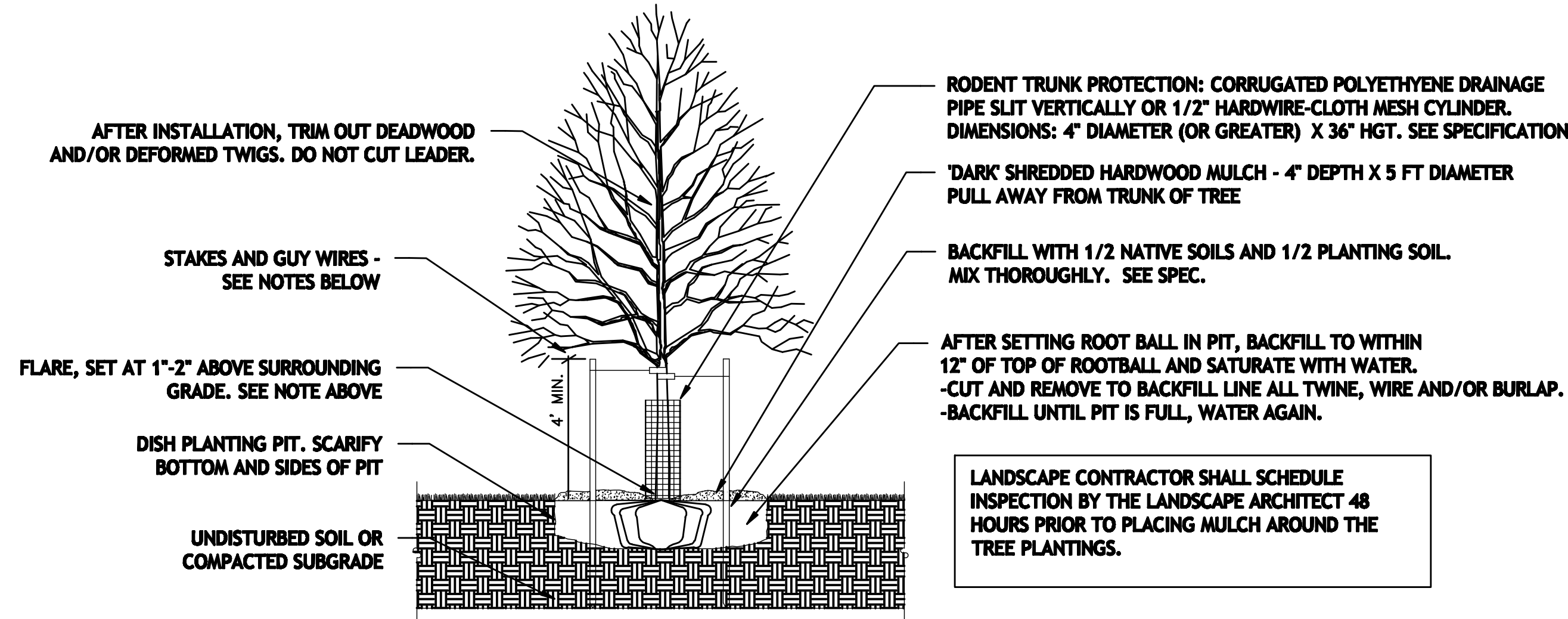
PROJECT TITLE
RELOCATE REHAB SERVICES 656-16-277
St. Cloud VA Health Care System

DATE: 12/03/2018
 PROJECT NO.:
 BUILDING NO.:
 CHECKED BY:
 DRAWN BY:
 APPROVED: MEDICAL CENTER DIRECTOR DATE
 LOCATION: VA MEDICAL CENTER ST. CLOUD, MN 56303
 DRAWING NO.: L101

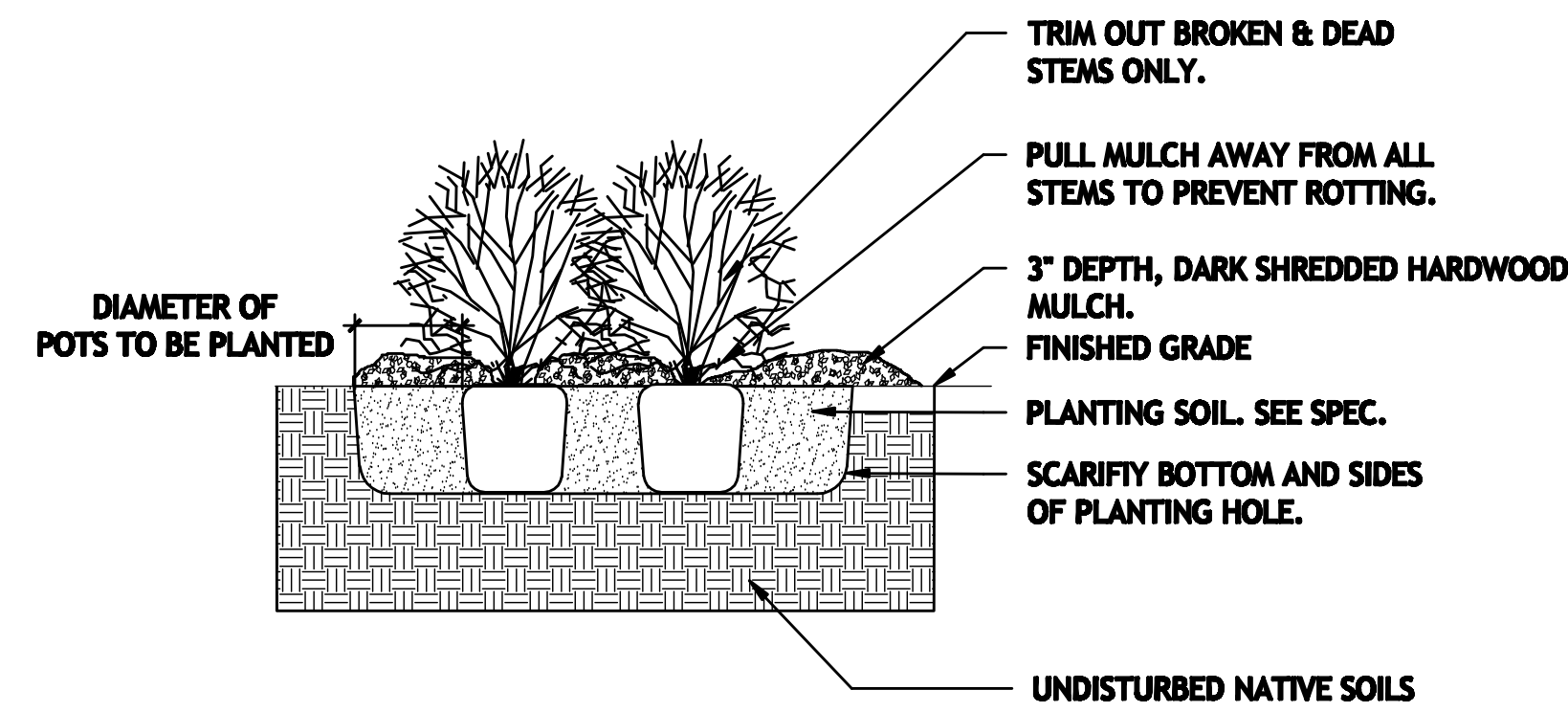


TREES WILL BE REJECTED FOR THE FOLLOWING REASONS:
 -POOR FORM
 -DAMAGED TRUNK
 -BURIED ROOT FLARES
 -ENCIRCLING TRANSPORT ROOTS
 -UNCONSOLIDATED ROOTBALL SOIL (DUE TO EXCESSIVE HANDLING)

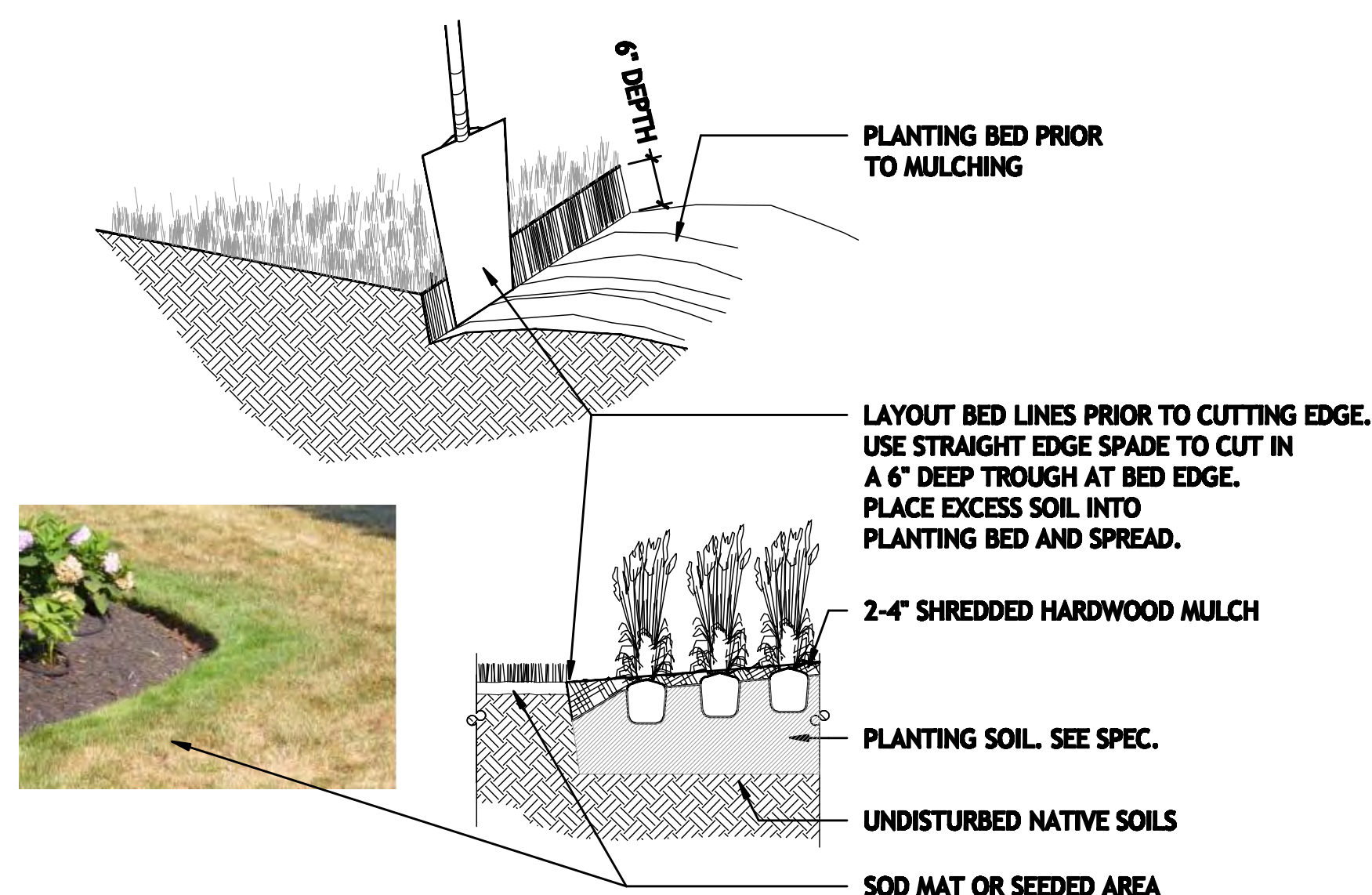
NOTES:
 1) CONTRACTOR SHALL LOCATE WITH PIN THE ROOT FLARE OF EACH TREE PRIOR TO DIGGING THE PLANTING PIT. (THE FLARE IS THE TRANSITION ZONE BETWEEN THE MAIN STEM AND THE ROOT SYSTEM.)
 2) REMOVE SOIL FROM TOP OF ROOTBALL TO EXPOSE TOP OF FLARE. TREES WITH MORE THAN 2" OF EXCESS SOIL ABOVE THE FLARE WILL BE REJECTED. MEASURE DISTANCE BETWEEN FLARE AND BOTTOM OF ROOTBALL. SUBTRACT 10% TO DETERMINE DEPTH OF PLANTING PIT.
 3) DIG PIT TO DEPTH DETERMINED ABOVE. PIT SHALL BE DISHED WITH SIDEWALLS AS SHOWN BELOW. SCARIFY WALLS AND BOTTOM OF PIT.
 4.) SET TREE IN PIT SO THAT FLARE IS ONE-TWO INCHES ABOVE SURROUNDING GRADE.
 5) IN ALL AREAS WITH HEAVY CLAY OR POORLY DRAINED SOILS (MOTTLING), CONTACT LANDSCAPE ARCHITECT. TREE MAY BE RELOCATED OR ROOTBALL FURTHER ELEVATED.



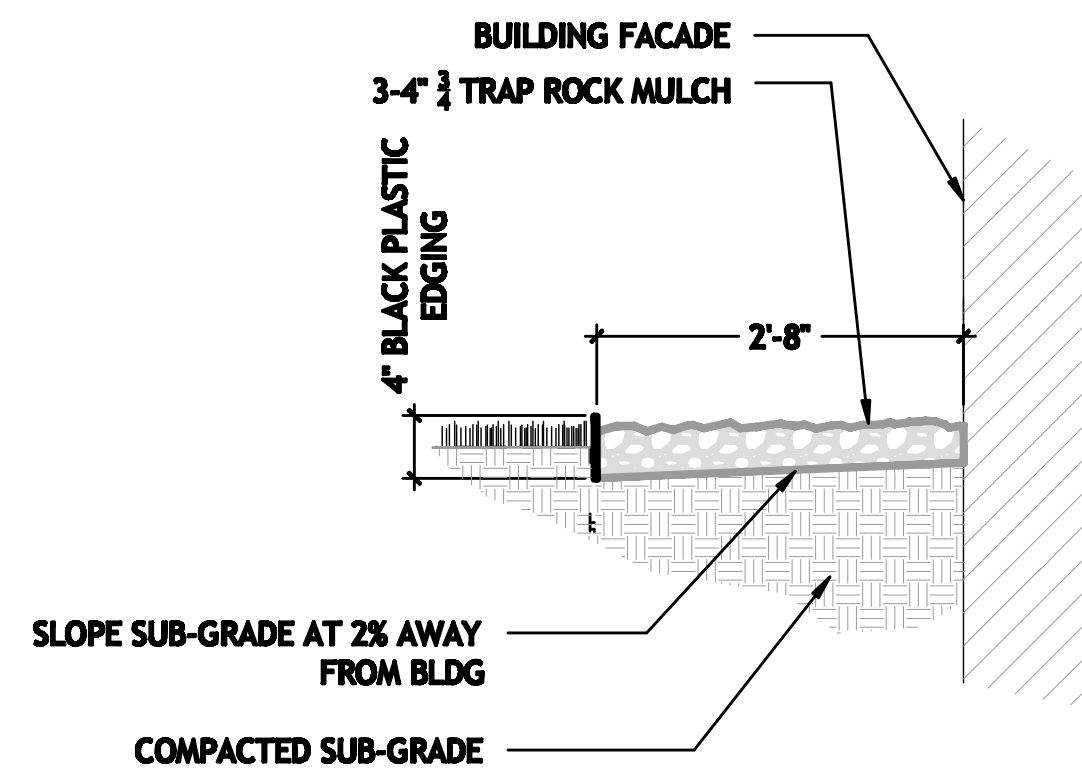
1 TREE PLANTING DETAIL
 NTS



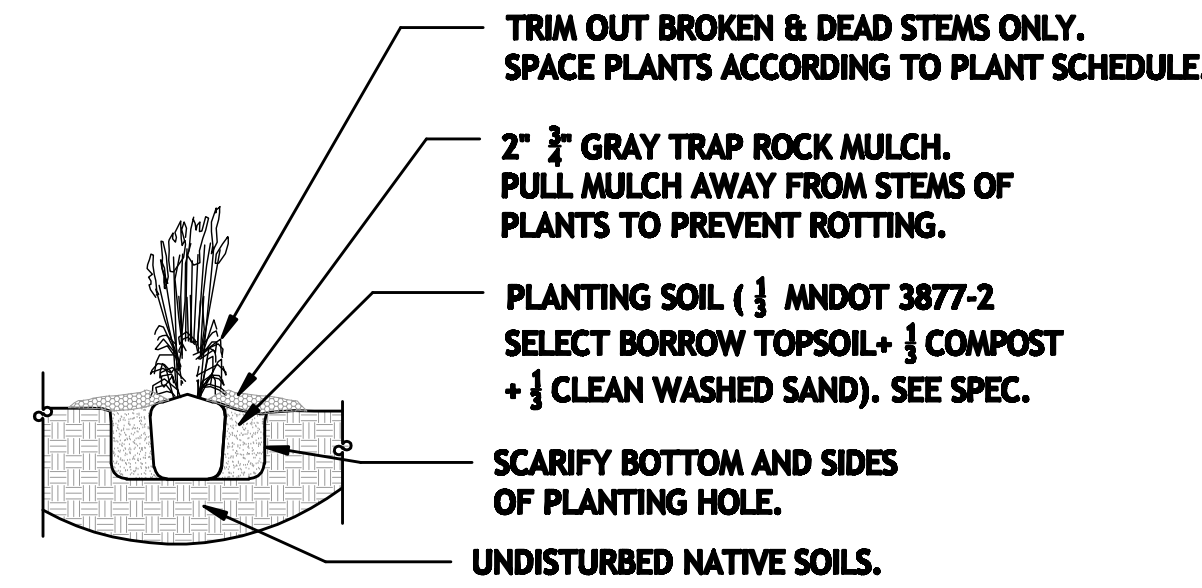
2 SHRUB PLANTING DETAIL
 NTS



3 SPADED EDGE DETAILS
 NTS



4 2'-8" MAINTENANCE STRIP
 NTS



5 PERENNIAL PLANTING DETAIL
 NTS

- All quantities, shapes of beds and locations shall be verified and adjusted as required to conform to the exact conditions of the site. Review with landscape architect prior to digging.
- Locate all utilities, including irrigation lines, with the Owner. Notify the Landscape Architect of any conflicts to facilitate plant relocation. Contractor shall be responsible for the repair of any damages to same.
- The Contractor shall be responsible for complying with all applicable codes, regulations and permits governing the work.
- The Contractor shall be responsible for all mulches and planting soil quantities to complete the work shown on the plan. Verify all quantities shown on the plant schedule.
- The Contractor shall remove from the site all sod/turf which has been removed for new plant beds. Long-term storage of materials or supplies on-site will not be allowed. Any plant stock not planted on day of delivery shall be heeled in and watered until installation. Plants not maintained in this manner will be rejected.
- The Contractor shall keep pavements, planters and buildings clean and unstained. All waste shall be promptly removed from the site. Any damage to existing facilities shall be repaired at the Contractor's expense.
- The plan takes precedence over the plant schedule if discrepancies exist. The specifications take precedence over the planting notes and general notes.
- Amend pH of bed with Iron Sulfate.
- No substitutions of plant materials shall be accepted unless approved in writing by the landscape architect.
- All planting stock shall conform to the 'American Standard for Nursery Stock' ANSI, latest edition, of the American Association of Nurserymen, Inc.
- All plants shall be guaranteed for one year from the date of substantial completion unless otherwise specified. The guarantee shall cover the full cost of replacement, including labor and plants.
- Seasons/Time of Planting:
 Spring: April 15th- June 30th
 Fall: August 15th- Nov 15th

6 PLANTING NOTES
 NTS

- Note: The Contractor may elect to plant in the off-seasons entirely at his/her risk.
- Planting soil for tree and shrub pits: By volume, mix 1/2 native soils with 1/2 imported planting soils. See specs.
 - Planting soil for shrub and perennial beds. Thoroughly mixed in equal parts by volume-1/3 amended topsoil, 1/3 washed sand, 1/3 peat or organic compost. See specs.
 - Fracture all compacted soils. See Soil Decompaction Notes
 - Irrigation system, if specified, shall be fully operational and tested at the time of planting. During first season, contractor shall monitor moisture conditions and adjust irrigation as needed to avoid over and under watering of plant materials during establishment.
 - Mulch: Double shredded hardwood mulch- clean and free of nodous weeds, soil, and other deleterious material. Use for all tree plantings and over all planting beds for shrubs and perennials. Deliver mulch on planting day and mulch all material within 24 hours of installation. Use the following depths: 4 inches for trees, 3 inches for shrubs, 2 inches for perennials. PULL MULCH AWAY FROM THE TRUNKS AND STEMS OF ALL PLANT MATERIAL.
 - Maintenance shall begin immediately after each portion of the work is in place. Plant materials shall be protected and maintained until the installation of all plants is complete. Inspection has been made and the planting accepted, exclusive of the guarantee. Maintenance shall include watering, cultivating, mulching, pruning and removal of dead material, and keeping the plants in a plumb position. After acceptance, the Owner shall assume maintenance responsibilities. The Contractor shall maintain all materials in a plumb position for the duration of the guarantee period.
 - The Contractor shall request in writing a final acceptance inspection.
 - Geotextile fabric shall not be used under mulch. Shrub and perennial bed shall have spaded edges unless plans indicate otherwise.

St. Cloud VA- Plant Schedule

QTY	COMMON NAME	BOTANICAL NAME	SIZE	CONT	REMARKS
9	Large Decid. Trees				
2	Bur Oak	<i>Quercus macrocarpa</i>	2.5"	bb	
1	Honeylocust 'Skyline'	<i>Gleditsia triacanthos in. 'Skyline'</i>	2.5"	bb	
1	Honeylocust 'Imperial'	<i>Gleditsia triacanthos in. 'Imperial'</i>	2.5"	bb	
2	Linden 'Redmond'	<i>Tilia americana 'Redmond'</i>	2.5"	bb	
1	Maple 'Autumn Blaze'	<i>Acer x. 'Jeffersred'</i>	2.5"	bb	
2	Swamp White Oak	<i>Quercus bicolor</i>	2.5"	bb	
14	Ornamental Trees				
12	Crabapple 'Spring Snow'	<i>Malus sp. 'Spring Snow'</i>	2.5"	bb	
2	Hawthorn	<i>Crataegus crus galli 'inermis'</i>	2.5"	bb	
92	Deciduous Shrubs				
10	Spirea 'Snowmound'	<i>Spirea nipponica 'Snowmound'</i>	#5	cont	
10	Spirea 'Fritschiana'	<i>Spirea fritschiana</i>	#5	cont	
6	Lilac 'Miss Kim'	<i>Syringa patula 'Miss Kim'</i>	#5	cont	
16	Lilac 'Prairie Petite'	<i>Syringa vulgaris 'Prairie Petite'</i>	#5	cont	
29	Shrub Rose 'Carefree Wonder'	<i>Rosa sp. 'Carefree Wonder'</i>	#5	cont	
6	Shrub Rose 'Champlain'	<i>Rosa sp. 'Champlain'</i>	#5	cont	
15	Shrub Rose 'High Voltage'	<i>Rosa sp. 'High Voltage'</i>	#5	cont	
37	Evergreen Shrubs				
10	Juniper 'Broadmoor'	<i>Juniperus sabinna 'Broadmoor'</i>	#5	cont	
9	Juniper 'Grey Owl'	<i>Juniperus virginiana 'Grey Owl'</i>	#5	cont	
15	Arborvitae 'Technito'	<i>Thuja occidentalis 'Technito'</i>	4' hgt	cont	
3	Juniper 'Blue Star'	<i>Juniperus squamata 'Blue Star'</i>	#5	cont	
512	Perennials/ Grasses				
7	Blue Oat Grass 'Sapphire'	<i>Helictotrichon sempervirens 'Sapphire'</i>	#1	cont	
48	Catmint 'Walkers Low'	<i>Nepeta subsessilis 'Walkers Low'</i>	#1	cont	
40	Daylily 'Ice Carnival'	<i>Hemerocallis sp. 'Ice Carnival'</i>	#1	cont	
13	Daylily 'Bella Lugosi'	<i>Hemerocallis sp. 'Bella Lugosi'</i>	#1	cont	
20	Daylily 'Blueberry Candy'	<i>Hemerocallis sp. 'Blueberry Candy'</i>	#1	cont	
14	Daylily 'Baja Red'	<i>Hemerocallis sp. 'Baja Red'</i>	#1	cont	
9	Daylily 'Stella d'Oro'	<i>Hemerocallis 'Stella d'Oro'</i>	#1	cont	
30	Daylily 'South Seas'	<i>Hemerocallis sp. 'South Seas'</i>	#1	cont	
36	Deschampsia Grass 'Schottland'	<i>Deschampsia caespitosa 'Schottland'</i>	#1	cont	
29	Echinacea 'Mistral'	<i>Echinacea purpurea 'Mistral'</i>	#1	cont	
36	Feather Reed Grass 'Karl Foerster'	<i>Calamagrostis acutiflora 'Karl Foerster'</i>	#1	cont	
28	Gaillardia 'Burgundy Silk'	<i>Gaillardia sp. 'Burgundy Silk'</i>	#1	cont	
21	Hosta 'Hadsphen Blue'	<i>Hosta sp. 'Hadsphen Blue'</i>	#1	cont	
28	Little Bluestem 'Blue Heaven'	<i>Schizachyrium scoparium 'Blue Heaven'</i>	#1	cont	
23	Miscanthus 'Flame'	<i>Miscanthus sinensis 'Flame'</i>	#1	cont	
20	Prairie Dropseed	<i>Sporobolus heterolepis</i>	#1	cont	
13	Rudbeckia 'Goldsturm'	<i>Rudbeckia fulgida 'Goldsturm'</i>	#1	cont	
29	Sedum 'Purple Emperor'	<i>Sedum sp. 'Purple Emperor'</i>	#1	cont	
49	Salvia 'May Night'	<i>Salvia nemorosa 'May Night'</i>	#1	cont	
19	Tigerlily 'Tiny Ghost'	<i>Lilium sp. 'Tiny Ghost'</i>	#1	cont	
2	Boston Ivy	<i>Parthenocissus tricuspidata</i>	#1	cont	

6 PLANTING SCHEDULE
 NTS

Horty Elving
 Planning Architecture Engineering Interior Design Construction Management Design Build
 505 East Grant Street, Minneapolis, MN 55404-1490
 T 612.332.4422 F 612.344.1282 hortyelving.com
 Horty Elving & Associates, Inc.



I hereby certify that this plan, specification, or report was prepared by me or under my direct supervision and that I am a duly Licensed Landscape Architect under the laws of the State of Minnesota.

Ben Erickson License No. 98102

APPROVED: SERVICE LINE DIRECTOR DATE

APPROVED: GEMM COORDINATOR DATE

APPROVED: PROJECTS SECTION MANAGER DATE

APPROVED: DIRECTOR PAB DATE

APPROVED: INSPECTION CONTROL NUMBER DATE

APPROVED: PATIENT SAFETY DATE

APPROVED: CHIEF OF POLICE DATE

APPROVED: SAFETY MANAGER DATE

DRAWING TITLE: **LANDSCAPE DETAILS**

PROJECT TITLE: **RELOCATE REHAB SERVICES 656-16-277**

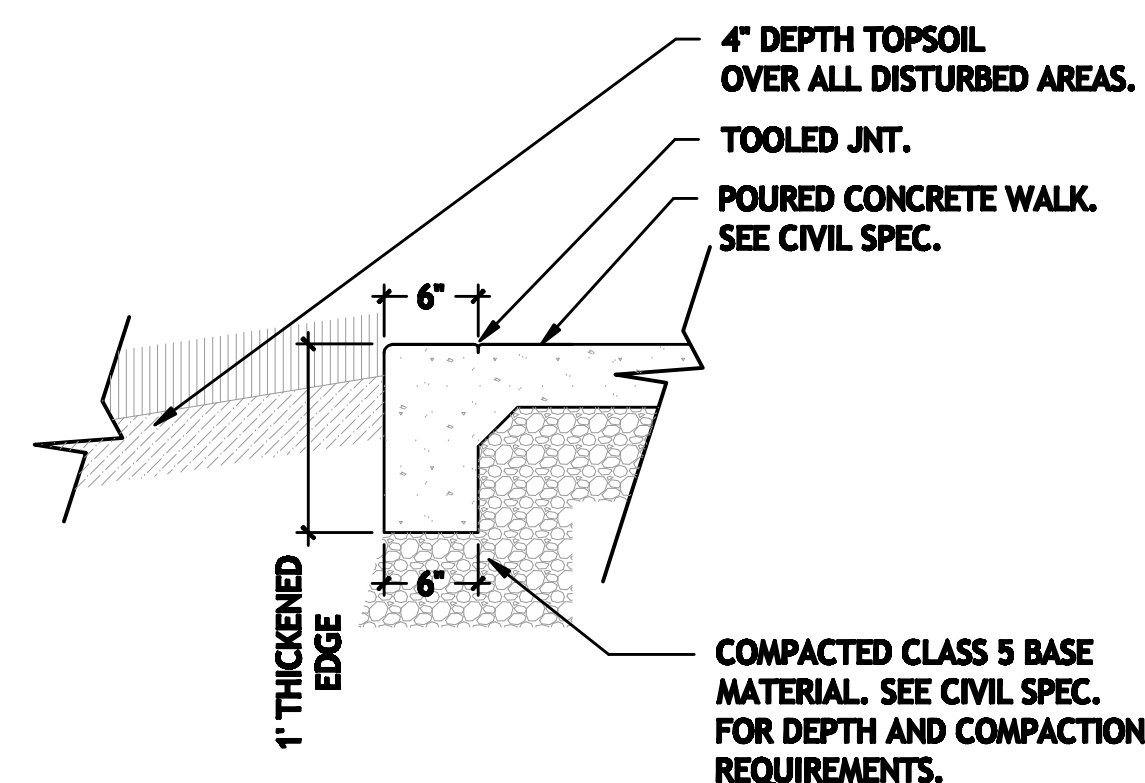
DATE: 12/03/2018

PROJECT NO.:

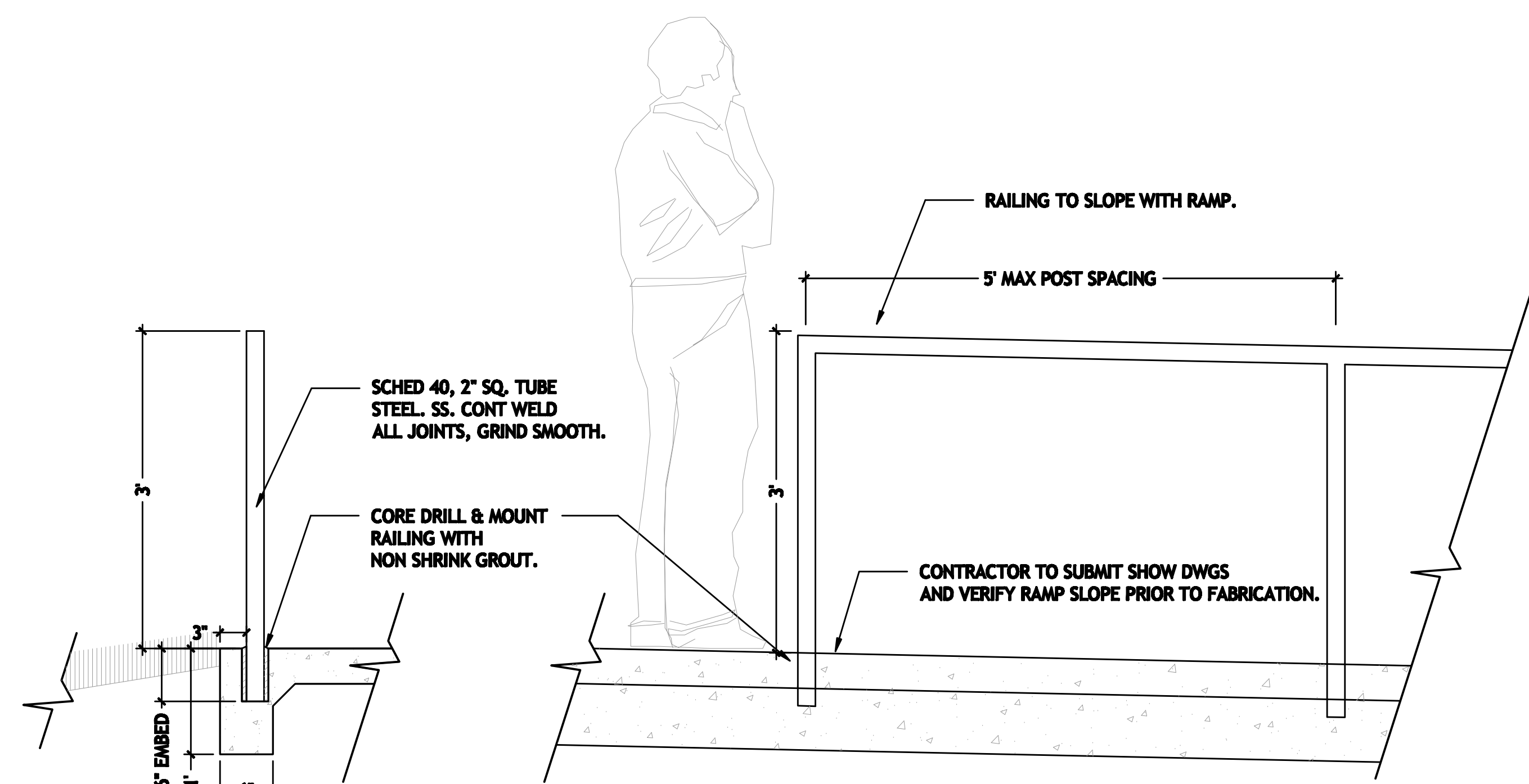
DATE: 12/03/2018

PROJECT NO.:





1 THICKENED EDGE FOR RAMPS AND CIRCLE PATIO
1"=1'-0"

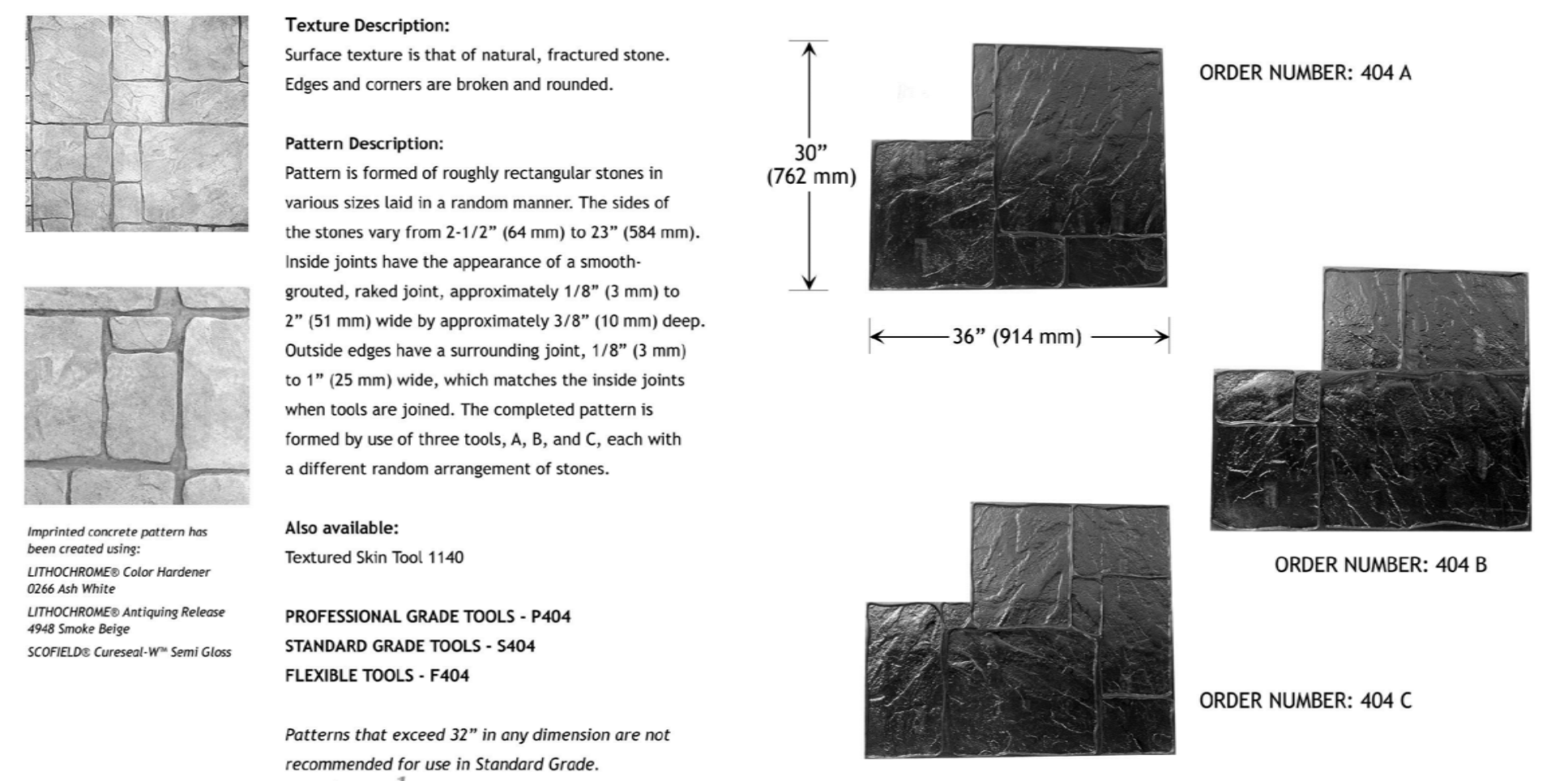


2 HANDRAIL AT RAMPS
1"=1'-0"

LITHOTEX® Pavecrafters® professional imprinting tools and embossing skins for authentic textures and realistic patterns



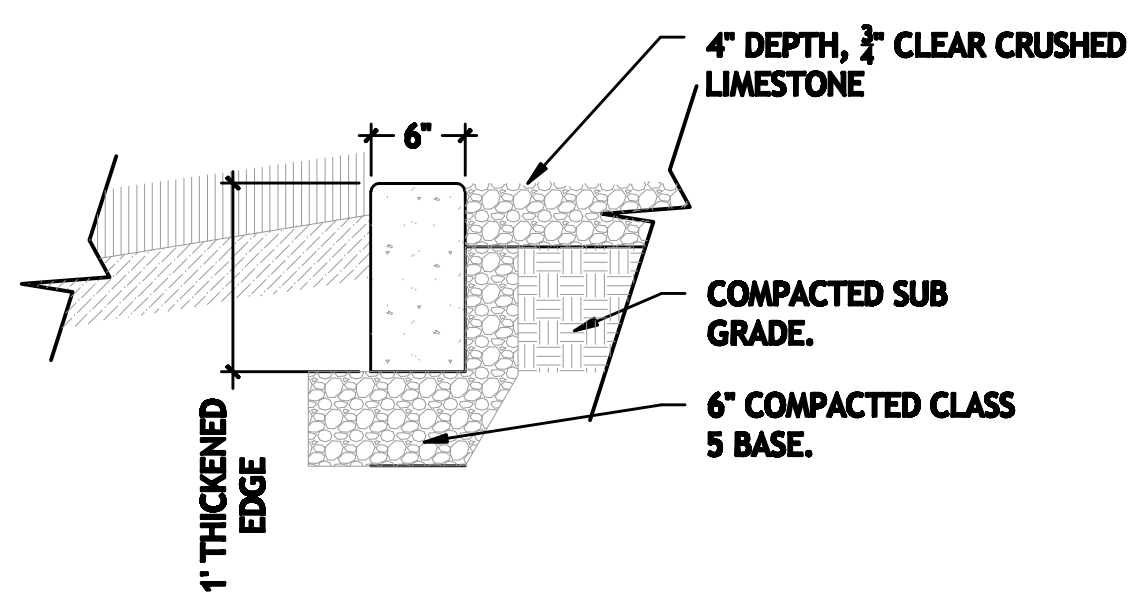
ENGLISH YORKSTONE
RANDOM INTERLOCKING PATTERN
ORDER NUMBER: 404 A, B, C



This pattern sheet is meant as a reference only. Read the Scofield Tech-Data bulletin T-404 LITHOTEX Pavecrafters for additional information, layout suggestions, and installation instructions. Creating layouts for imprinted concrete requires skill and practice. Follow professional standards and practices, including those published by the American Concrete Institute (ACI).
© L. M. Scofield Company 2007. All rights reserved. LITHOTEX, LITHOPRIME, SCOFIELD, CONCRETE, SCOFIELD SYSTEMS, and Pavecrafters are trademarks of L. M. Scofield Company.
FOR PROFESSIONAL USE ONLY 0000117



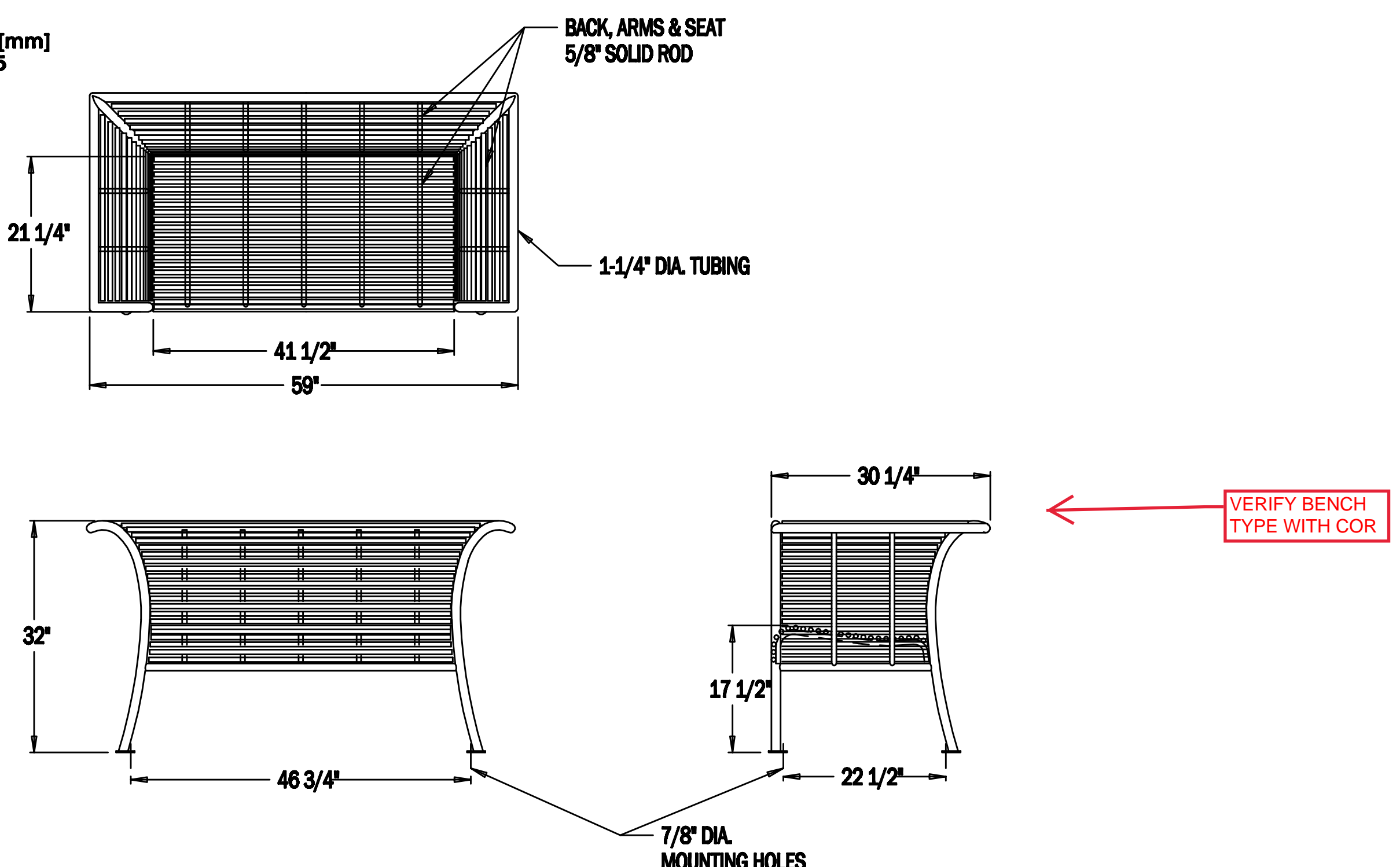
3 STAMPED CONCRETE STONE COLOR AND TEXTURE- CONTRACTOR TO SUBMIT SAMPLES TO LANDSCAPE ARCH. FOR APPROVAL
1"=1'-0"



4 POURED CONCRETE BAND
1"=1'-0"

Hyde Park™ Product Drawing landscapeforms.com
Bench, 59" Length, Rod Seat Insert
www.landscapeforms.com Ph: 800.521.2546

Drawing: HP182-01
Date: 07/06/2010
Dimensions are in inches/mm
U.S. Patent No. D366,775



CONFIDENTIAL DRAWING INFORMATION CONTAINED HEREIN IS THE PROPERTY OF LANDSCAPE FORMS, INC. INTENDED USE IS LIMITED TO DESIGN PROFESSIONALS SPECIFYING LANDSCAPE FORMS, INC. PRODUCTS AND THEIR DIRECT CLIENTS. DRAWING IS NOT TO BE COPIED OR DISCLOSED TO OTHERS WITHOUT THE CONSENT OF LANDSCAPE FORMS, INC. © 2010 LANDSCAPE FORMS, INC. ALL RIGHTS RESERVED.

5 HYDE PARK BENCH
1"=1'-0"

 505 East Grant Street, Minneapolis, MN 55404-1490 T 612.332.4422 F 612.344.1282 hortyelving.com	Planning Architecture Engineering Interior Design Construction Management Design Build Horty Elving & Associates, Inc.	 Ben Erickson ben@landscapeforms.com ph 612.382.0982	I hereby certify that this plan, specification, or report was prepared by me or under my direct supervision and that I am a duly Licensed Landscape Architect under the laws of the State of Minnesota. Ben Erickson License No. 25138		APPROVED SERVICE LINE DIRECTOR DATE APPROVED GEM COORDINATOR DATE APPROVED PROJECTS SECTION MANAGER DATE APPROVED DIRECTOR PLAN DATE	APPROVED INSPECTION CONTROL NUMBER DATE APPROVED PATIENT SAFETY DATE APPROVED CHIEF OF POLICE DATE APPROVED SAFETY MANAGER DATE	DRAWING TITLE LANDSCAPE DETAILS	PROJECT TITLE RELOCATE REHAB SERVICES 656-16-277 St. Cloud VA Health Care System	DATE 12/03/2018 PROJECT NO. DRAWING NO. L300
			APPROVED CHIEF OF STAFF DATE APPROVED MEDICAL CENTER DIRECTOR DATE	BUILDING NO. CHECKED BY DRAWN BY VA MEDICAL CENTER 87-0100, MN 56303					