

NEW WORK

PLUMBING FIXTURE PIPE SIZES

FIXTURE	SUPPLY PIPE SIZE, INCH		WASTE PIPE SIZE, IN.	VENT PIPE SIZE, IN.
	HW	CW		
P-116 WATER CLOSET, TANK TYPE	---	3/4	4	2
P-117 WATER CLOSET, FLUSH VALVE	---	1-1/4	4	2
P-308 BATH TUB (NOT TO BE CONNECTED)	---	---	---	---
P-415 LAVATORY, WALL HUNG	1/2	1/2	1-1/4	1-1/4
P-421 LAVATORY	1/2	1/2	1-1/4	1-1/4
P-502 SERVICE SINK, CORNER, FLOOR MOUNTED	3/4	3/4	3	1-1/2
P-624 SINK, CRS. DOUBLE COMPARTMENT	1/2	1/2	1-1/2	1-1/2
P-628 SINK, CRS. SINGLE COMPARTMENT	1/2	1/2	1-1/2	1-1/2
P-610 ELECTRIC WATER COOLER	---	1/2	1-1/4	1-1/4
F-708 EMERGENCY EYE WASH	1/2	1/2	1-1/4	1-1/4
P-801 WALL HYDRANT, NON-FREEZE	---	3/4	---	---
P-804 HORSE BIBB	---	3/4	---	---
FD-G FLOOR DRAIN FINISHED SPACES	---	---	SIZE PER PLAN	---
FD-G FLOOR DRAIN MECHANICAL SPACES	---	---	SIZE PER PLAN	---

ALTERNATE NOTES

REFER TO ARCHITECTURAL FLOOR PLANS AND SPECIFICATION FOR DESCRIPTION OF ALTERNATES 9, 10 AND 11 OF CONSTRUCTION.

SPECIFICATION NOTES

COMPLETE LAYOUT DRAWINGS SHALL BE REQUIRED BY PARAGRAPH. SUBMITTALS CONSTRUCTION WORK SHALL NOT START ON ANY SYSTEM UNTIL THE LAYOUT DRAWING HAVE BEEN APPROVED.

GENERAL NOTES

CORE DRILLING THRU BEAMS OR EXISTS IS NOT ALLOWED. IF PLUMBING WALL IS LOCATED ON A BEAM/JUST, CONTRACTOR SHALL CONTACT ENGINEER.

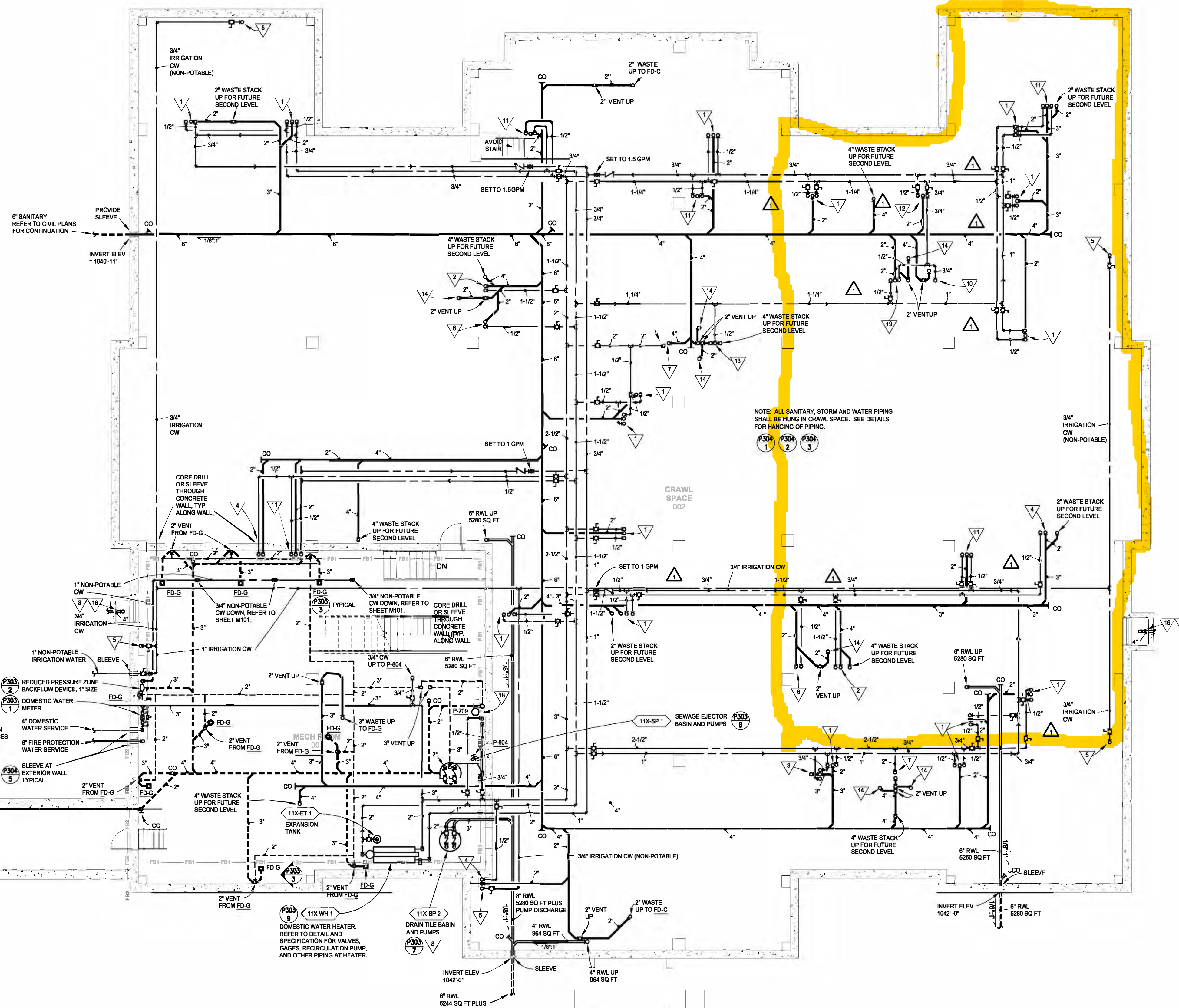
ALL HOLES IN FLOOR OR WALL FROM PIPING SHALL BE FIRESTOPPED TO MATCH ASSEMBLY FIRE RATING.

ALL PIPING TO RUN CONCEALED ABOVE CEILING UNLESS OTHERWISE NOTED OR IN MECHANICAL ROOM.

NOT ALL NOTES ARE USED ON EACH SHEET.

KEY NOTES

- ▽ 2" WASTE, 1/2" COLD WATER AND 1/2" HOT WATER UP TO FIXTURE P-415.
- ▽ 4" WASTE AND 1-1/2" COLD WATER UP TO FIXTURE P-117. EXTEND 1/2" COLD WATER TO ADJACENT LAVATORY, IN WALL ABOVE.
- ▽ 2" WASTE, 2" VENT, 3/4" COLD WATER AND 3/4" HOT WATER UP TO FIXTURE P-502.
- ▽ 2" WASTE, 1/2" COLD WATER UP TO FIXTURE P-610.
- ▽ 3/4" IRRIGATION (NON-POTABLE) COLD WATER UP TO FIXTURE P-801.
- ▽ 2" WASTE AND 1/2" HOT WATER UP TO FIXTURE P-415. EXTEND 1/2" COLD WATER FROM ADJACENT 1-1/2" CW TOILET SUPPLY.
- ▽ 4" WASTE AND 2" COLD WATER UP TO FIXTURES P-117.
- ▽ REFER TO STRUCTURAL FOUNDATION PLAN FOR DRAIN TILE PIPING.
- ▽ PROVIDE 1/2" 1/2" WATER WITH SHUT-OFF VALVE FROM SINK TO DISHWASHER. ROUTE DISHWASHER DRAIN TO AIR GAP FITTING THEN TO TAILPICE OF SINK.
- ▽ 4" WASTE, 2" VENT AND 3/4" COLD WATER UP TO FIXTURE P-116.
- ▽ 2" WASTE, 1/2" COLD WATER AND 1/2" HOT WATER UP TO FIXTURE P-502.
- ▽ 2" WASTE, 1/2" COLD WATER AND 1/2" HOT WATER UP TO FIXTURE P-421.
- ▽ 2" WASTE AND 1/2" HOT WATER UP TO TWO FIXTURES P-415. EXTEND 1/2" COLD WATER TO LAVATORIES FROM ADJACENT 2" CW TOILET SUPPLY.
- ▽ 2" WASTE UP TO FLOOR DRAIN FD-G.
- ▽ COORDINATE WITH MECHANICAL DUCT WORK FOR ELEVATION OF EACH.
- ▽ CONNECT A 4" STORM DRAIN PIPE TO THE DRAIN TILE PIPE. THE 4" STORM DRAIN PIPE OPEN END (INLET) SHALL BE FLUSH WITH THE FLOOR OF THE AREA WELL.
- ▽ CONNECT A 4" STORM DRAIN PIPE TO THE DRAIN TILE PIPE. THE 4" STORM DRAIN PIPE SHALL CONNECT TO FD-G. NO TRAP PRIMER SHALL BE INSTALLED ON THIS AREA DRAIN.
- ▽ CONNECT 2" WASTE, 2" VENT, 1/2" COLD WATER AND 1/2" HOT WATER TO FIXTURE P-708.
- ▽ 2" WASTE, 1/2" COLD WATER AND 1/2" HOT WATER UP TO FIXTURE P-804.



1	PR/25	3/09/16
No	REVISION	DATE



505 East Grant Street, Minneapolis, MN 55404-1490
T 612.332.4422 F 612.344.1282 hortyelving.com

Planning
Architecture
Engineering
Interior Design
Construction Management
Design Build
Horty Elving & Associates, Inc.

RECORD SET 09/30/16

I hereby certify that this plan, specification or report was prepared by me or under my direct supervision and that I am a duly licensed Professional Engineer under the laws of the State of Minnesota.
James C. Elving License No. 12852

APPROVED: SERVICE LINE DIRECTOR	DATE	APPROVED: INFECTION CONTROL NURSE	DATE
APPROVED: GEMM COORDINATOR	DATE	APPROVED: PATIENT SAFETY	DATE
APPROVED: PROJECTS SECTION MANAGER	DATE	APPROVED: CHIEF OF POLICE	DATE
APPROVED: DIRECTOR FMS	DATE	APPROVED: SAFETY MANAGER	DATE

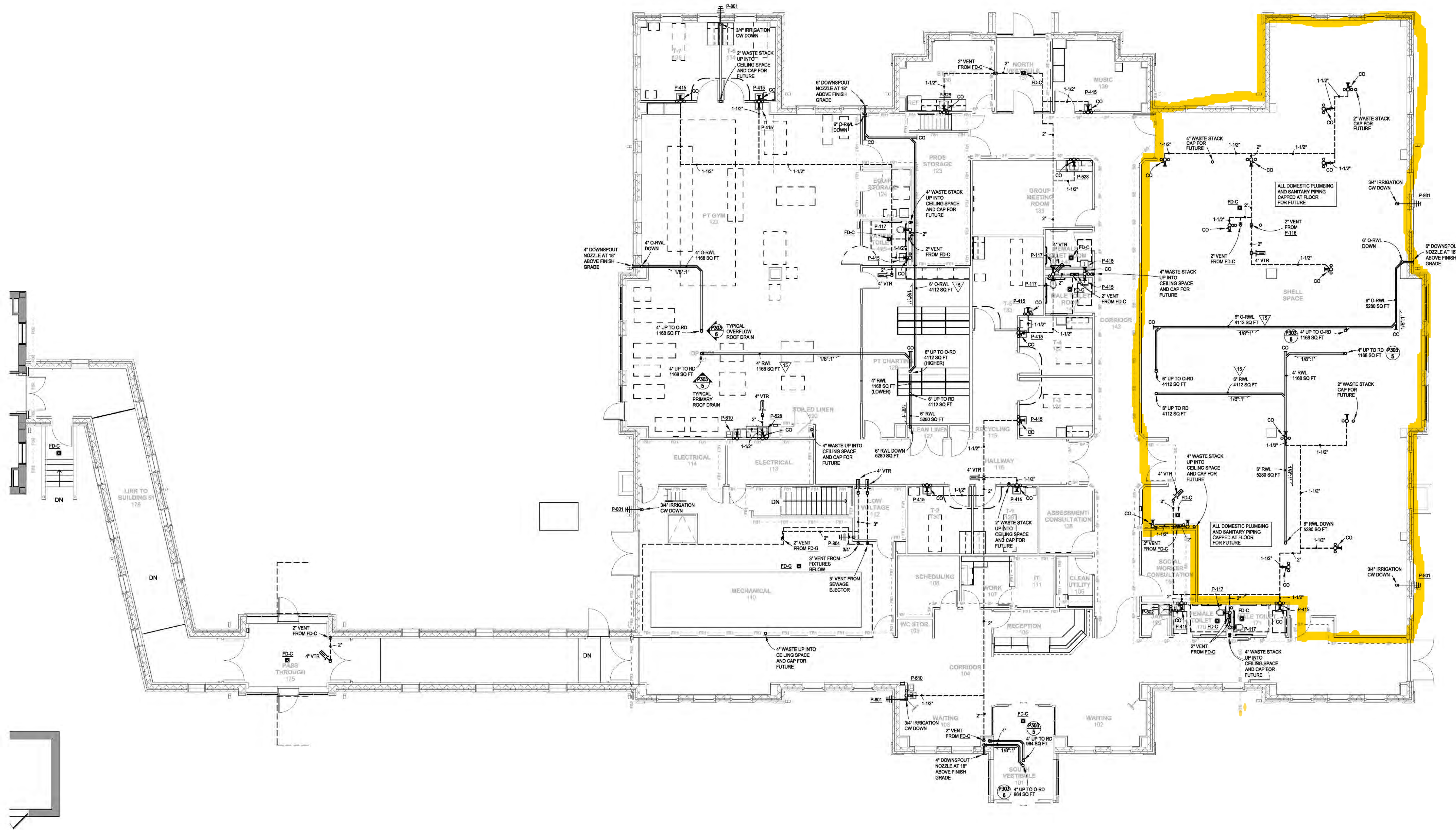
DRAWING TITLE
PLUMBING LOWER LEVEL

PROJECT TITLE REHABILITATION CENTER PROJECT #056-332 St. Cloud VA Health Care System	DATE 01/03/2013
PROJ SCALE 1/8"=1'-0"	REV S1430
BUILDING NO 116	CHECKED BY XXX
LOCATION VA MEDICAL CENTER ST. CLOUD, MN 56303	DRAWING NO P101



Work outside of work area may be required. Field verify existing conditions

NEW WORK AREA



PLUMBING FIXTURE PIPE SIZES

FIXTURE	SUPPLY PIPE SIZE, INCH		WASTE PIPE SIZE, IN.	VENT PIPE SIZE, IN.
	HW	CW		
P-118 WATER CLOSET, TANK TYPE	—	3/4	4	2
P-117 WATER CLOSET, FLUSH VALVE	—	1-1/4	4	2
P-308 BATH/UB (NOT TO BE CONNECTED)	—	1-1/4	—	—
P-415 LAVATORY, WALL HUNG	1/2	1/2	1-1/4	1-1/4
P-421 LAVATORY	1/2	1/2	1-1/4	1-1/4
P-502 SERVICE SINK, CORNER, FLOOR MOUNTED	3/4	3/4	3	1-1/2
P-524 SINK, CHR, DOUBLE COMPARTMENT	1/2	1/2	1-1/2	1-1/2
P-529 SINK, CHR, SINGLE COMPARTMENT	1/2	1/2	1-1/2	1-1/2
P-610 ELECTRIC WATER COOLER	—	1/2	1-1/4	1-1/4
P-709 EMERGENCY EYE WASH	1/2	1/2	1-1/4	1-1/4
P-801 WALL HYDRANT, NON-FREEZE	—	3/4	—	—
P-804 HOSE BIBB	—	3/4	—	—
FD-C FLOOR DRAIN FINISHED SPACES	—	—	SIZE PER PLAN	—
FD-G FLOOR DRAIN MECHANICAL SPACES	—	—	SIZE PER PLAN	—

ALTERNATE NOTES

REFER TO ARCHITECTURAL FLOOR PLANS AND SPECIFICATION FOR DESCRIPTION OF ALTERNATES 1, 10 AND 11 OF CONSTRUCTION.

SPECIFICATION NOTES

COMPLETE LAYOUT DRAWINGS SHALL BE REQUIRED BY PARAGRAPH SUBMITTALS. CONSTRUCTION WORK SHALL NOT START ON ANY SYSTEM UNTIL THE LAYOUT DRAWING HAVE BEEN APPROVED.

GENERAL NOTES

- DO NOT DRILL THRU BEAMS OR JOISTS IS NOT ALLOWED. IF PLUMBING WALL IS LOCATED ON AN ABAMAJOIST, CONTRACTOR SHALL CONTACT ENGINEER.
- ALL HOLES IN FLOOR OR WALL FROM PIPING SHALL BE FIRST STOPPED TO MATCH ASSEMBLY FIRE RATING.
- ALL PIPING TO RUN CONCEALED ABOVE CEILING UNLESS OTHERWISE NOTED OR IN MECHANICAL ROOM.
- NOT ALL NOTES ARE USED ON EACH SHEET.

KEY NOTES

- ▽ 2" WASTE, 1/2" COLD WATER AND 1/2" HOT WATER UP TO FIXTURE P-415.
- ▽ 4" WASTE AND 1-1/2" COLD WATER UP TO FIXTURE P-117. EXTEND 1/2" COLD WATER TO ADJACENT LAVATORY, IN WALL ABOVE.
- ▽ 3" WASTE, 2" VENT, 3/4" COLD WATER AND 3/4" HOT WATER UP TO FIXTURE P-502.
- ▽ 2" WASTE, 1/2" COLD WATER UP TO FIXTURE P-415.
- ▽ 3/4" IRRIGATION (NON-POTABLE) COLD WATER UP TO FIXTURE P-801.
- ▽ 2" WASTE AND 1/2" HOT WATER UP TO FIXTURE P-415. EXTEND 1/2" COLD WATER FROM ADJACENT 1-1/2" CW TOILET SUPPLY.
- ▽ 4" WASTE AND 2" COLD WATER UP TO FIXTURES P-117.
- ▽ REFER TO STRUCTURAL FOUNDATION PLAN FOR DRAIN TILE PIPING.
- ▽ PROVIDE 1/2" HOT WATER WITH SHUT-OFF VALVE FROM SINK TO DISHWASHER. ROUTE DISHWASHER DRAIN TO AIR GAP FITTING THEN TO TAILPIECE OF SINK.
- ▽ 4" WASTE, 2" VENT AND 3/4" COLD WATER UP TO FIXTURE P-118.
- ▽ 2" WASTE, 1/2" COLD WATER AND 1/2" HOT WATER UP TO FIXTURE P-502.
- ▽ 2" WASTE, 1/2" COLD WATER AND 1/2" HOT WATER UP TO FIXTURE P-421.
- ▽ 2" WASTE AND 1/2" HOT WATER UP TO TWO FIXTURES P-415. EXTEND 1/2" COLD WATER TO LAVATORIES FROM ADJACENT 2" CW TOILET SUPPLY.
- ▽ 2" WASTE UP TO FLOOR DRAIN, FD-C.
- ▽ COORDINATE WITH MECHANICAL DUCT WORK FOR ELEVATION OF EACH.
- ▽ CONNECT A 4" STORM DRAIN PIPE TO THE DRAIN TILE PIPE. THE 4" STORM DRAIN PIPE OPEN END (INLET) SHALL BE FLUSH WITH THE FLOOR OF THE AREA WELL.
- ▽ CONNECT A 4" STORM DRAIN PIPE TO THE DRAIN TILE PIPE. THE 4" STORM DRAIN PIPE SHALL CONNECT TO FD-G. NO TRAP PRIMER SHALL BE INSTALLED ON THIS AREA DRAIN.
- ▽ CONNECT 2" WASTE, 2" VENT, 1/2" COLD WATER AND 1/2" HOT WATER TO FIXTURE P-206.
- ▽ 2" WASTE, 1/2" COLD WATER AND 1/2" HOT WATER UP TO FIXTURE P-524.

Horty Elving
 505 East Grant Street, Minneapolis, MN 55404-1490
 T 612.332.4422 F 612.344.1282 hortyelving.com

Planning
 Architecture
 Engineering
 Interior Design
 Construction Management
 Design Build
 Horty Elving & Associates, Inc.

RECORD SET 09/30/16

I hereby certify that this plan, specification or report was prepared by me or under my direct supervision and that I am a duly Licensed Professional Engineer under the laws of the State of Minnesota.
 James C. Elving License No. 12952

APPROVED SERVICE LINE DIRECTOR	DATE	APPROVED INSPECTION CONTROL NURSE	DATE
APPROVED GEMM COORDINATOR	DATE	APPROVED PATIENT SAFETY	DATE
APPROVED PROJECTS SECTION MANAGER	DATE	APPROVED CHIEF OF POLICE	DATE
APPROVED DIRECTOR PWS	DATE	APPROVED SAFETY MANAGER	DATE

DRAWING TITLE
PLUMBING FIRST FLOOR

PROJECT TITLE
 REHABILITATION CENTER PROJECT #656-332
 St. Cloud VA Health Care System

DATE
 01/03/2013

PROJECT NO.
 S1430

BUILDING NO.
 116

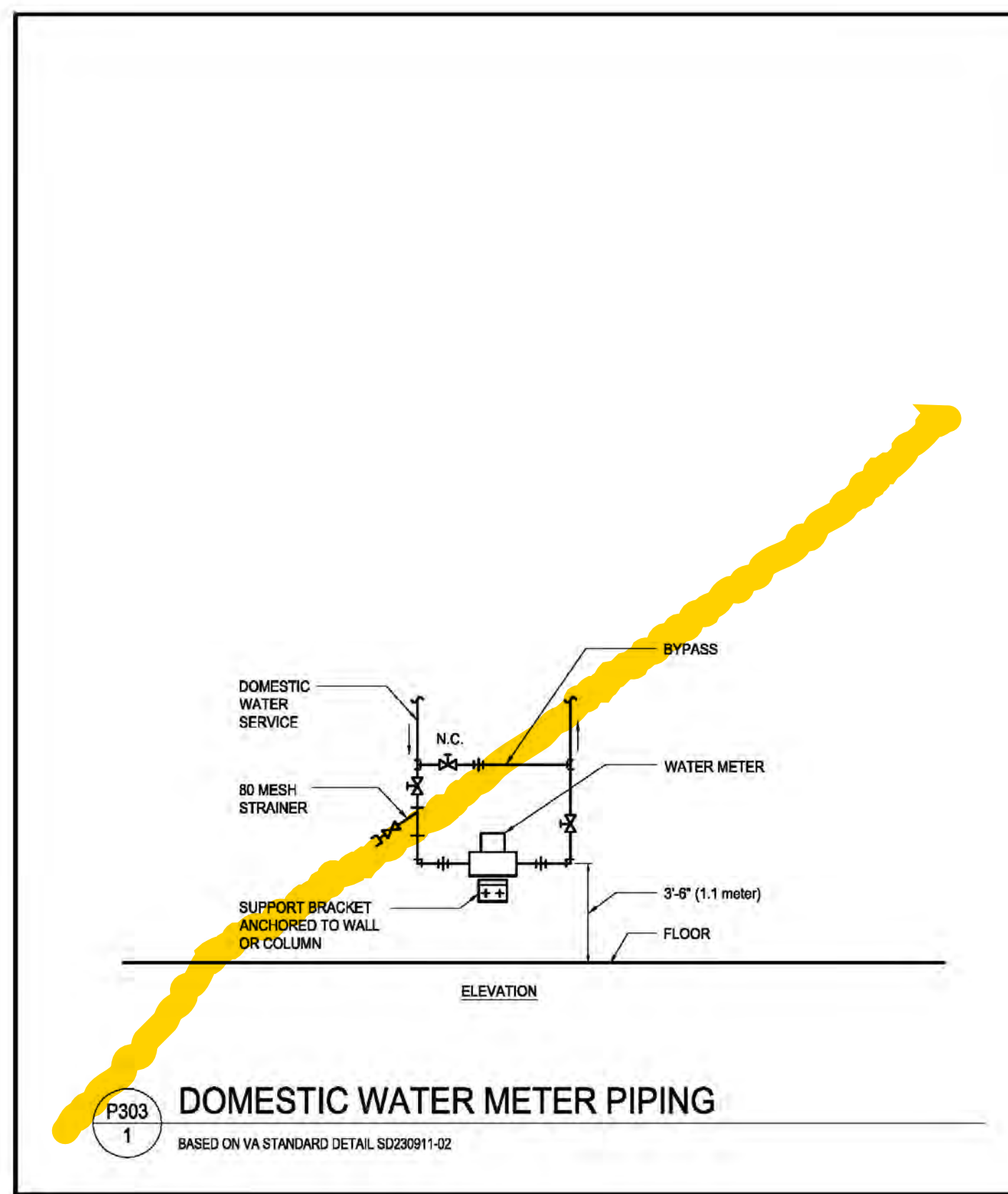
CHECKED BY
 XXX

DRAWN BY
 XXX

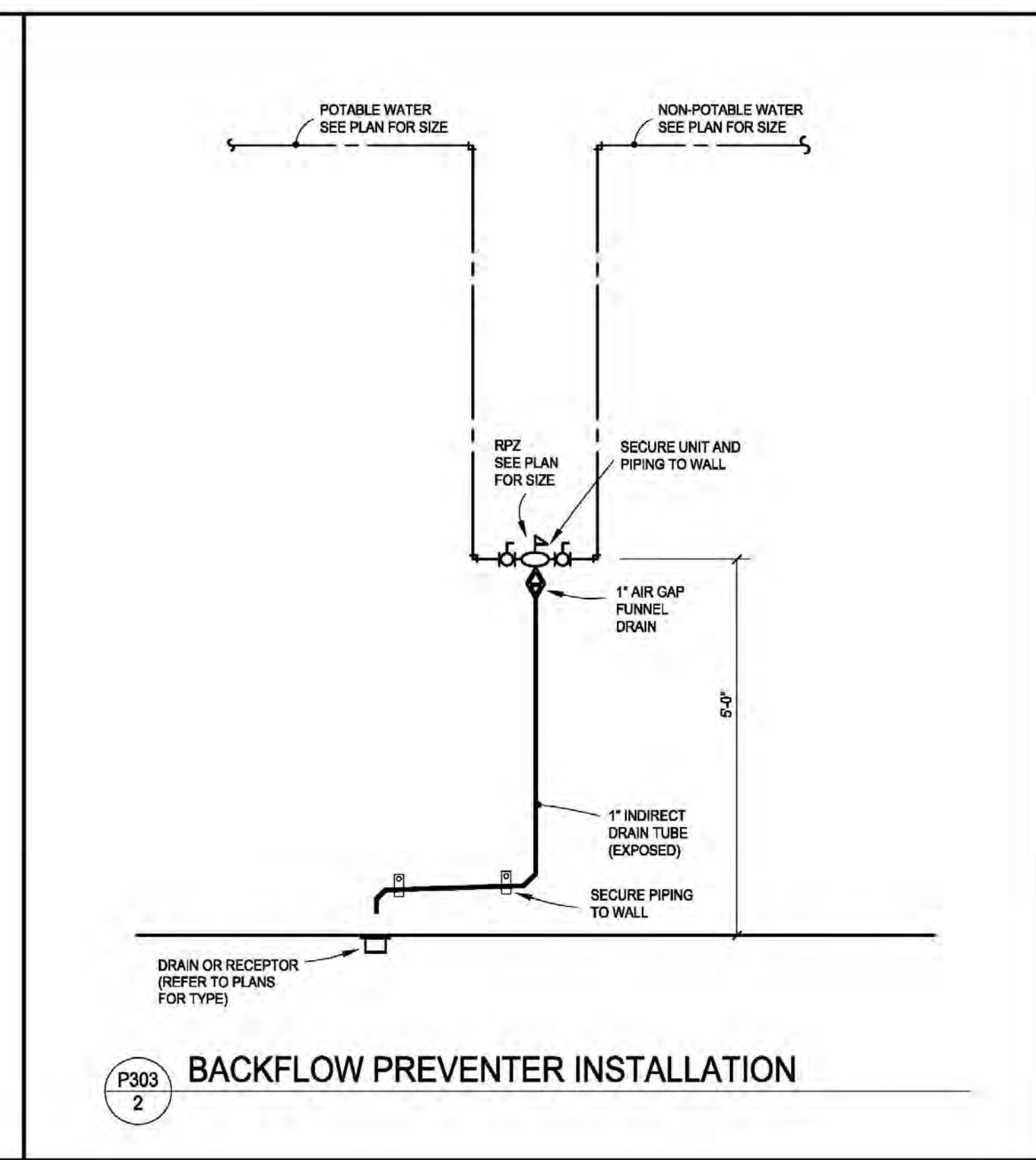
DATE
 01/03/2013

DRAWING NO.
 P201

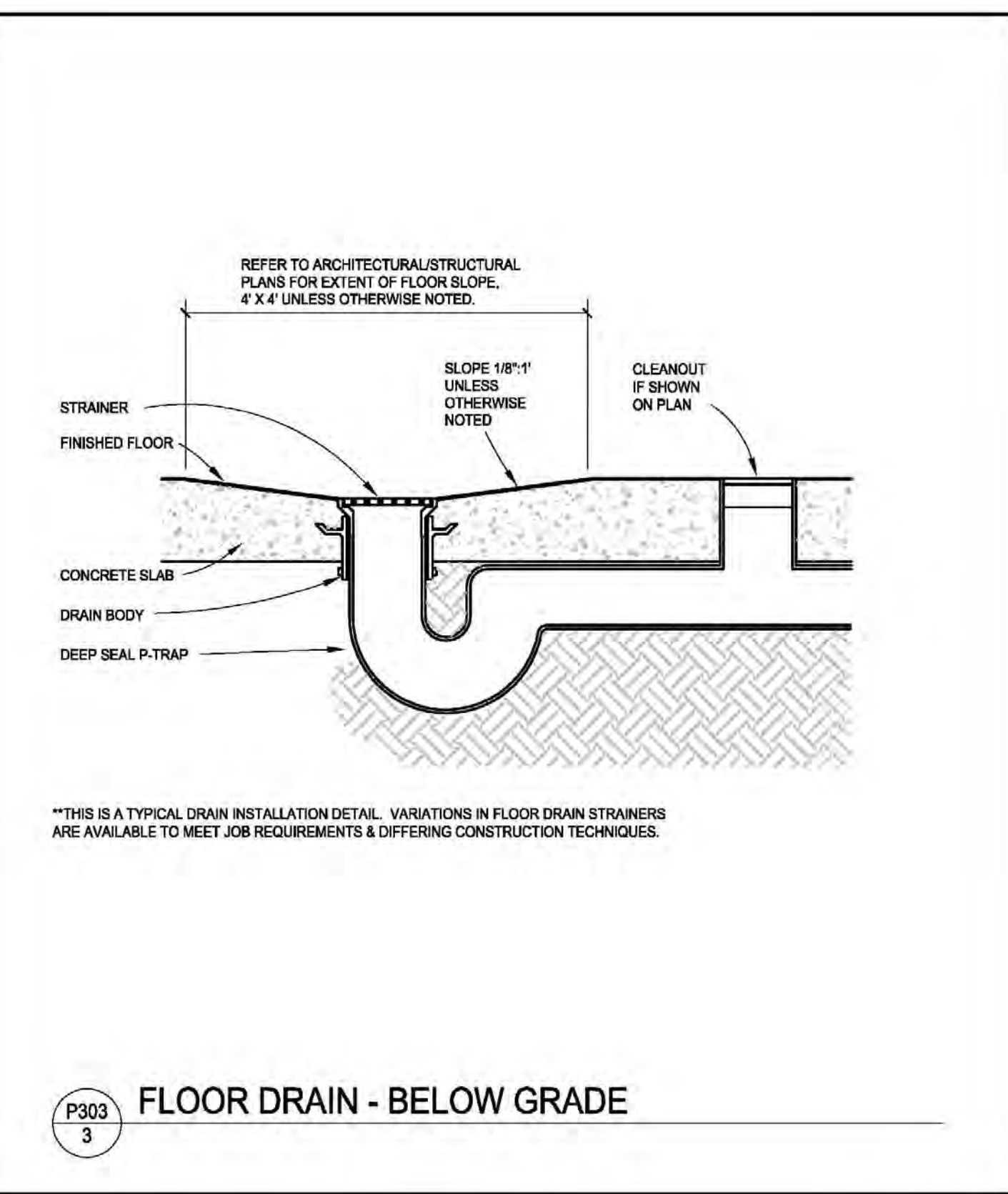




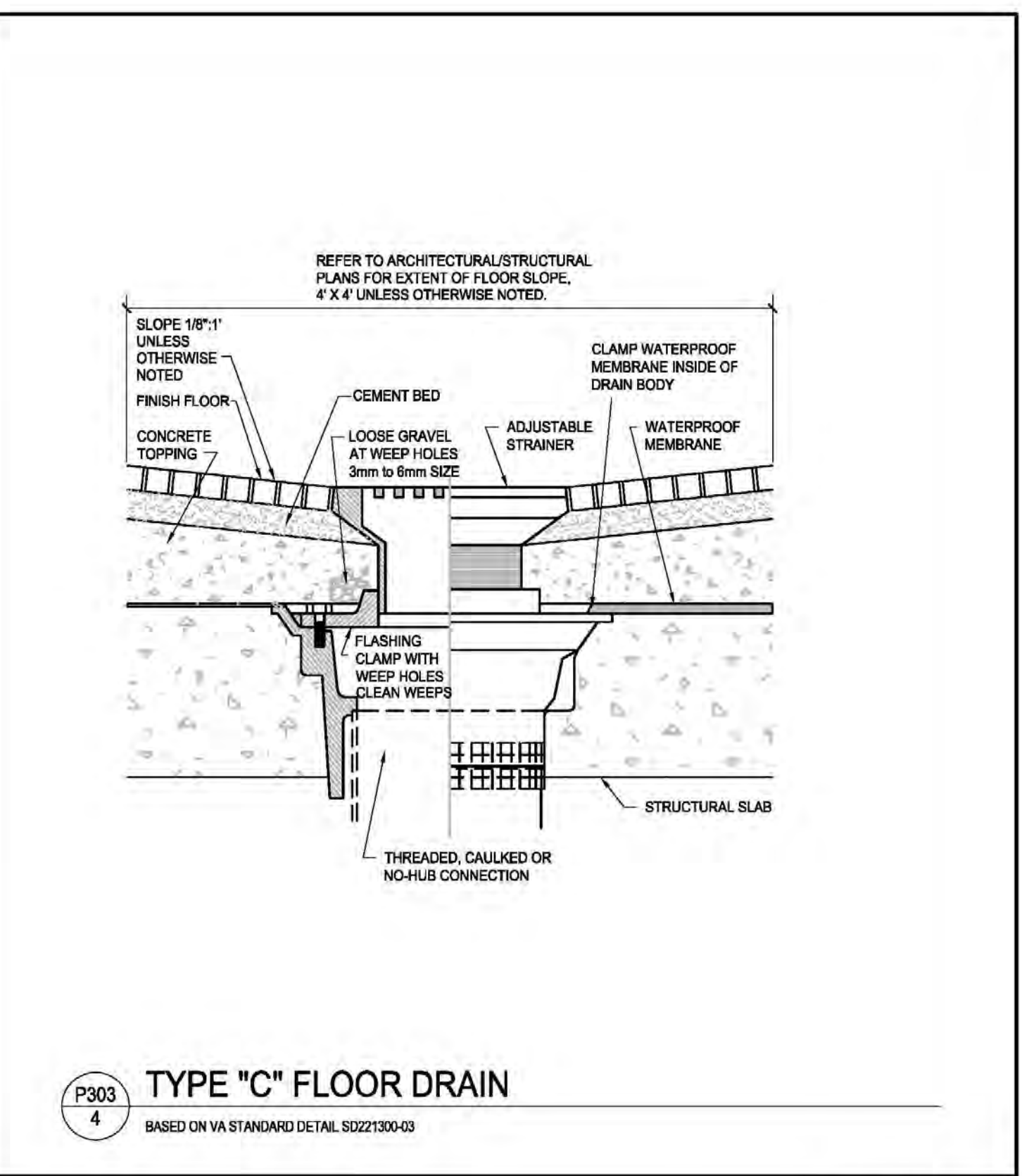
P303 1
DOMESTIC WATER METER PIPING
BASED ON VA STANDARD DETAIL S022011-02



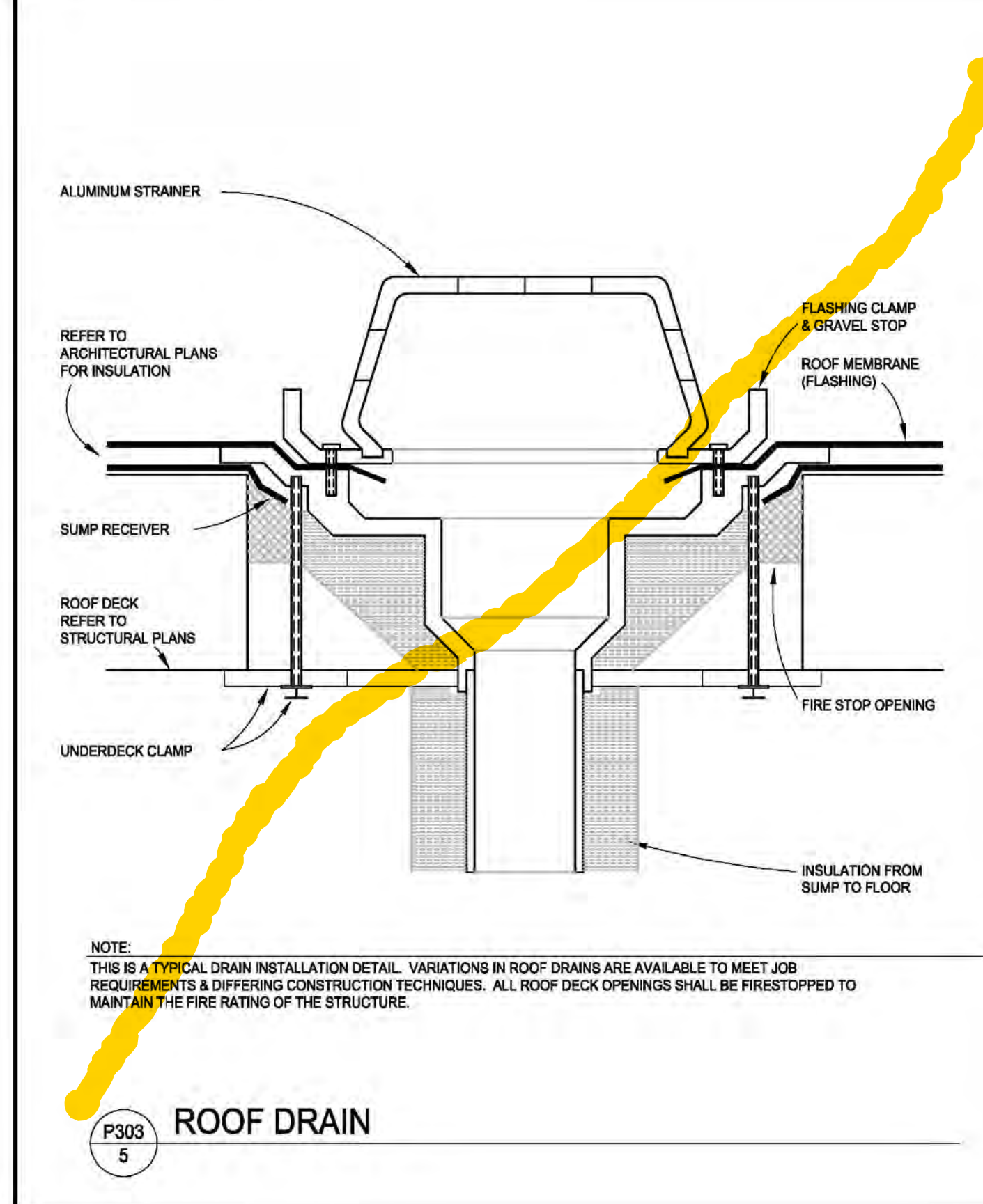
P303 2
BACKFLOW PREVENTER INSTALLATION



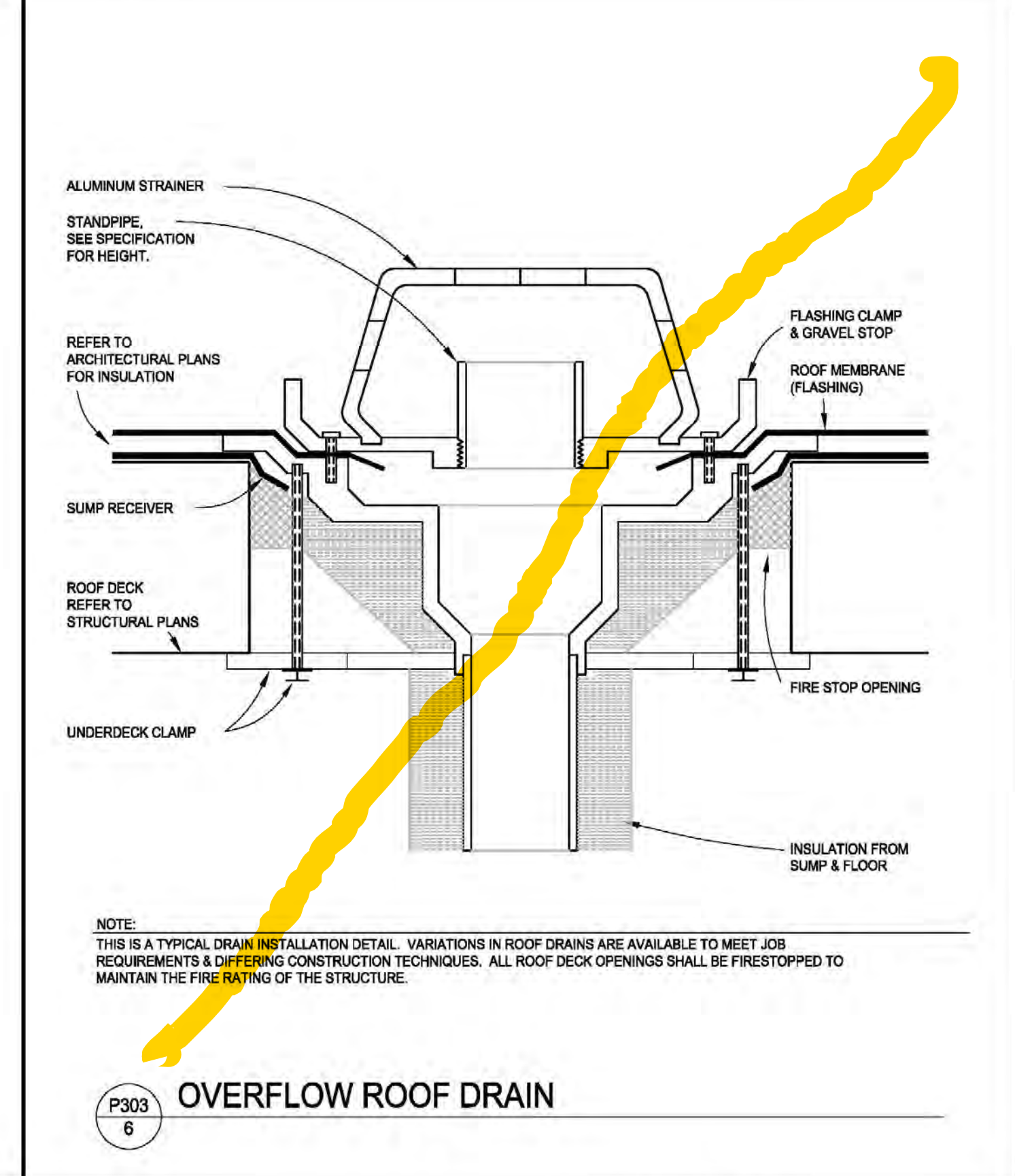
P303 3
FLOOR DRAIN - BELOW GRADE



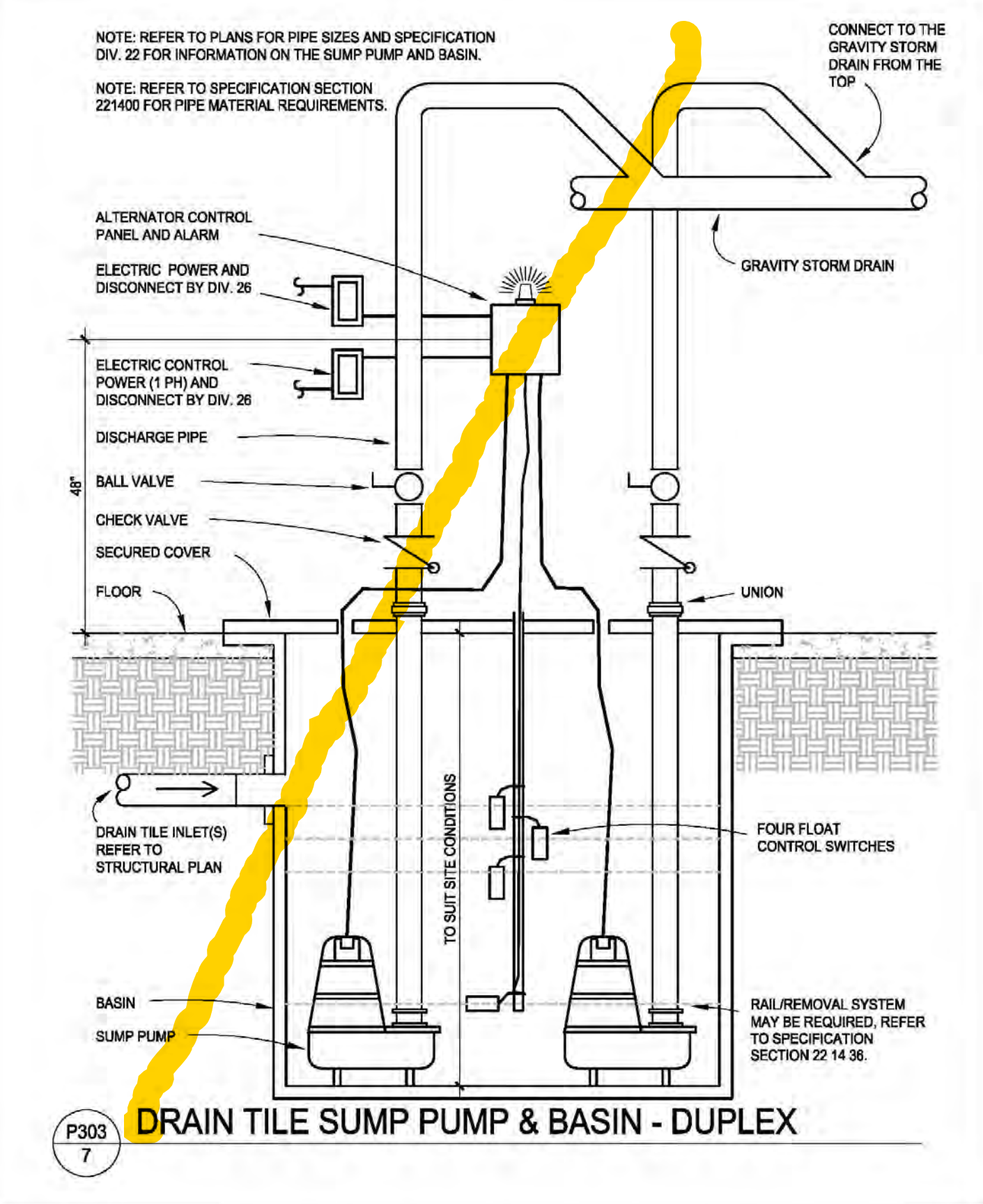
P303 4
TYPE "C" FLOOR DRAIN
BASED ON VA STANDARD DETAIL S022300-03



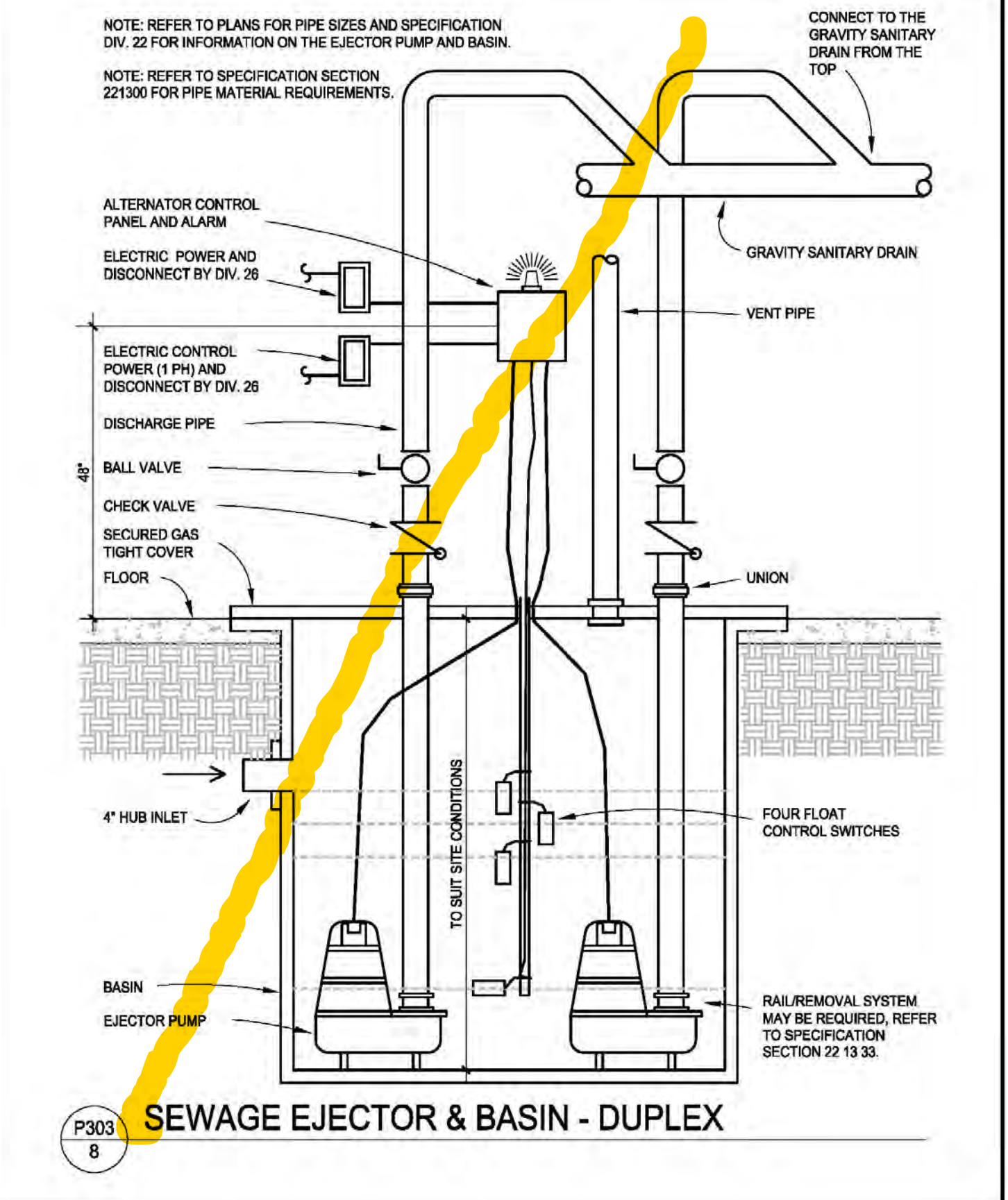
P303 5
ROOF DRAIN



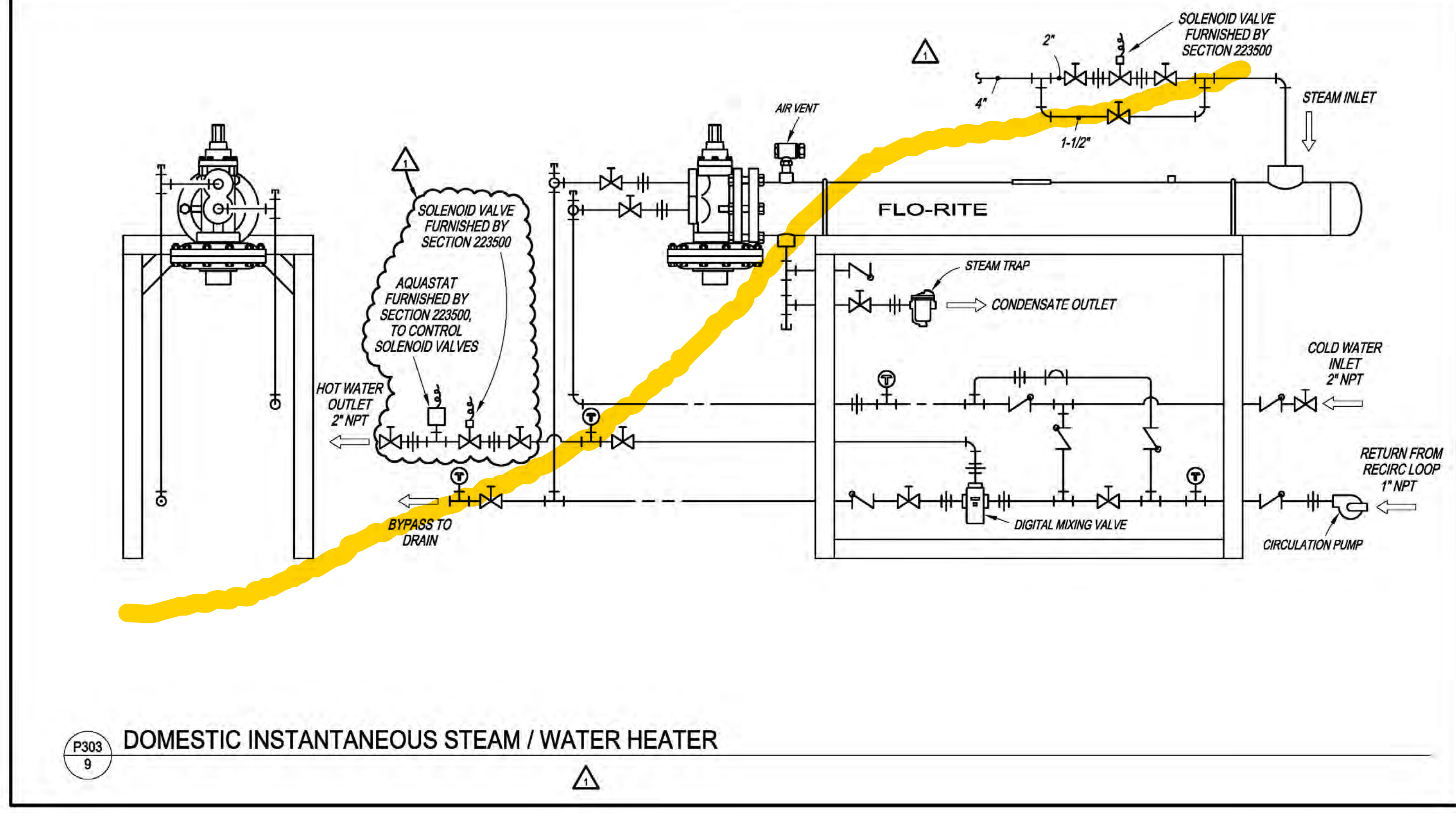
P303 6
OVERFLOW ROOF DRAIN



P303 7
DRAIN TILE SUMP PUMP & BASIN - DUPLEX



P303 8
SEWAGE EJECTOR & BASIN - DUPLEX



P303 9
DOMESTIC INSTANTANEOUS STEAM / WATER HEATER

1	PR/27	5/11/16
No.	REVISION	DATE

Horty Elving™
 505 East Grant Street, Minneapolis, MN 55404-1490
 T 612.332.4422 F 612.344.1282 hortyelving.com

Planning
 Architecture
 Engineering
 Interior Design
 Construction Management
 Design Build
 Horty Elving & Associates, Inc.

RECORD SET 09/30/16

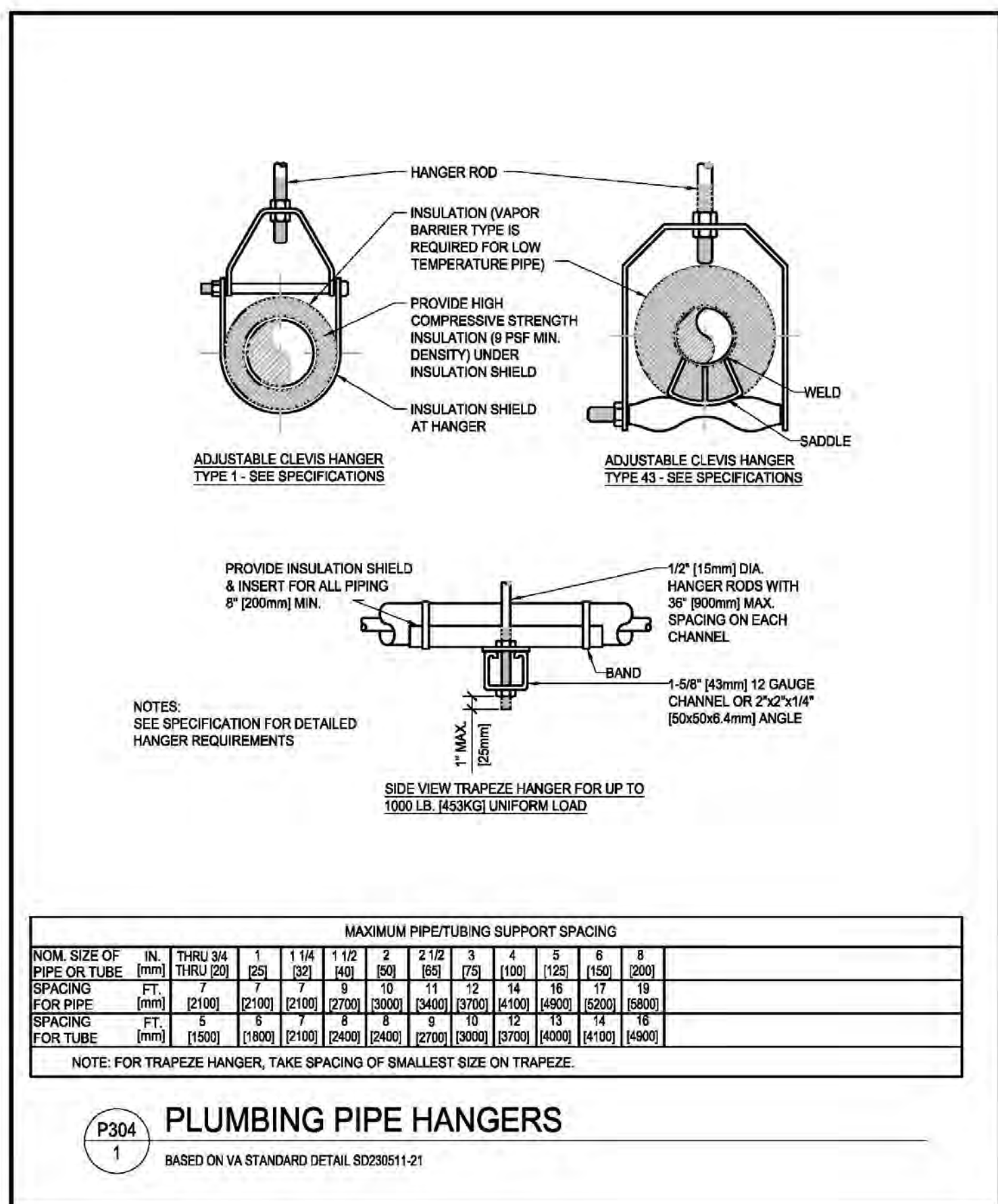
I hereby certify that this plan, specification or report was prepared by me or under my direct supervision and that I am a duly Licensed Professional Engineer under the laws of the State of Minnesota.
 James C. Elving
 License No. 12852

APPROVED: SERVICE LINE DIRECTOR	DATE	APPROVED: INFECTION CONTROL NURSE	DATE
APPROVED: GEMS COORDINATOR	DATE	APPROVED: PATIENT SAFETY	DATE
APPROVED: PROJECTS SECTION MANAGER	DATE	APPROVED: CHIEF OF POLICE	DATE
APPROVED: DIRECTOR PMS	DATE	APPROVED: SAFETY MANAGER	DATE

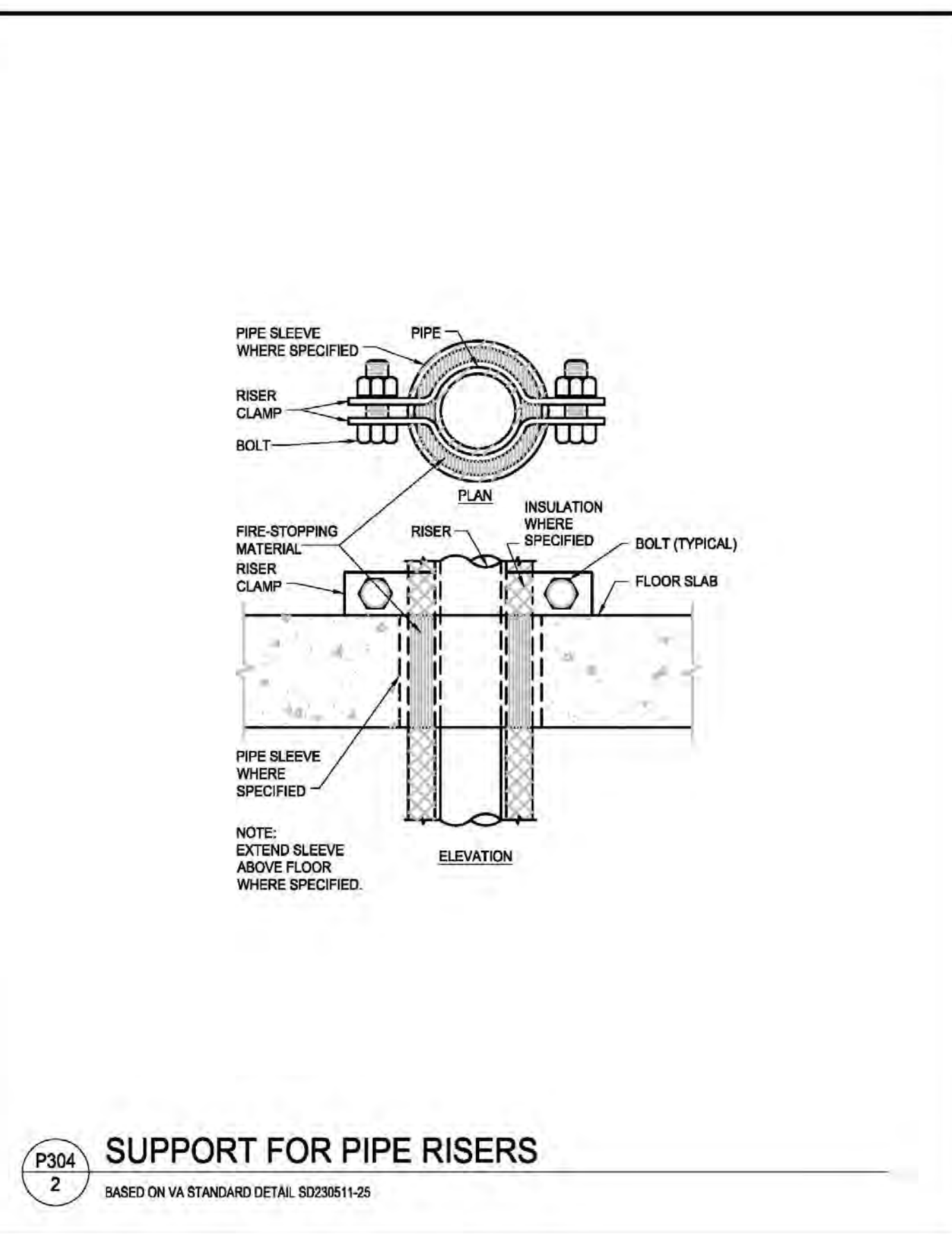
DRAWING TITLE			
PLUMBING DETAILS			
APPROVED: CHIEF OF STAFF	DATE	APPROVED: MEDICAL CENTER DIRECTOR	DATE

PROJECT TITLE		DATE	
REHABILITATION CENTER PROJECT #656-332		07/03/2013	
St. Cloud VA Health Care System		PROJ SCALE	
BUILDING NO. 116		NO SCALE	
CHECKED BY XXX		PROJECT NO. S1430	
LOCATION VA MEDICAL CENTER ST. CLOUD, MN 56303		DRAWING NO. P303	

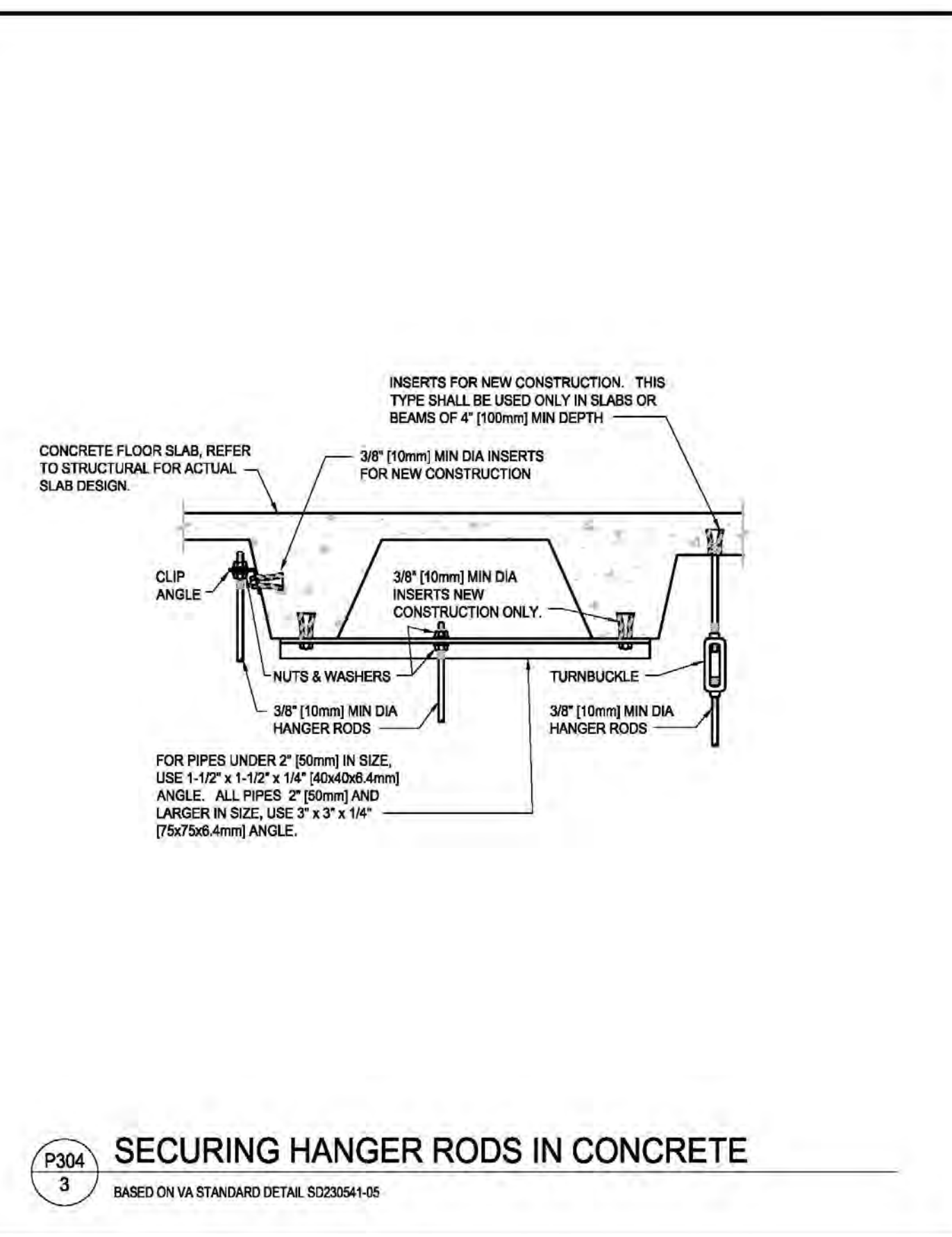




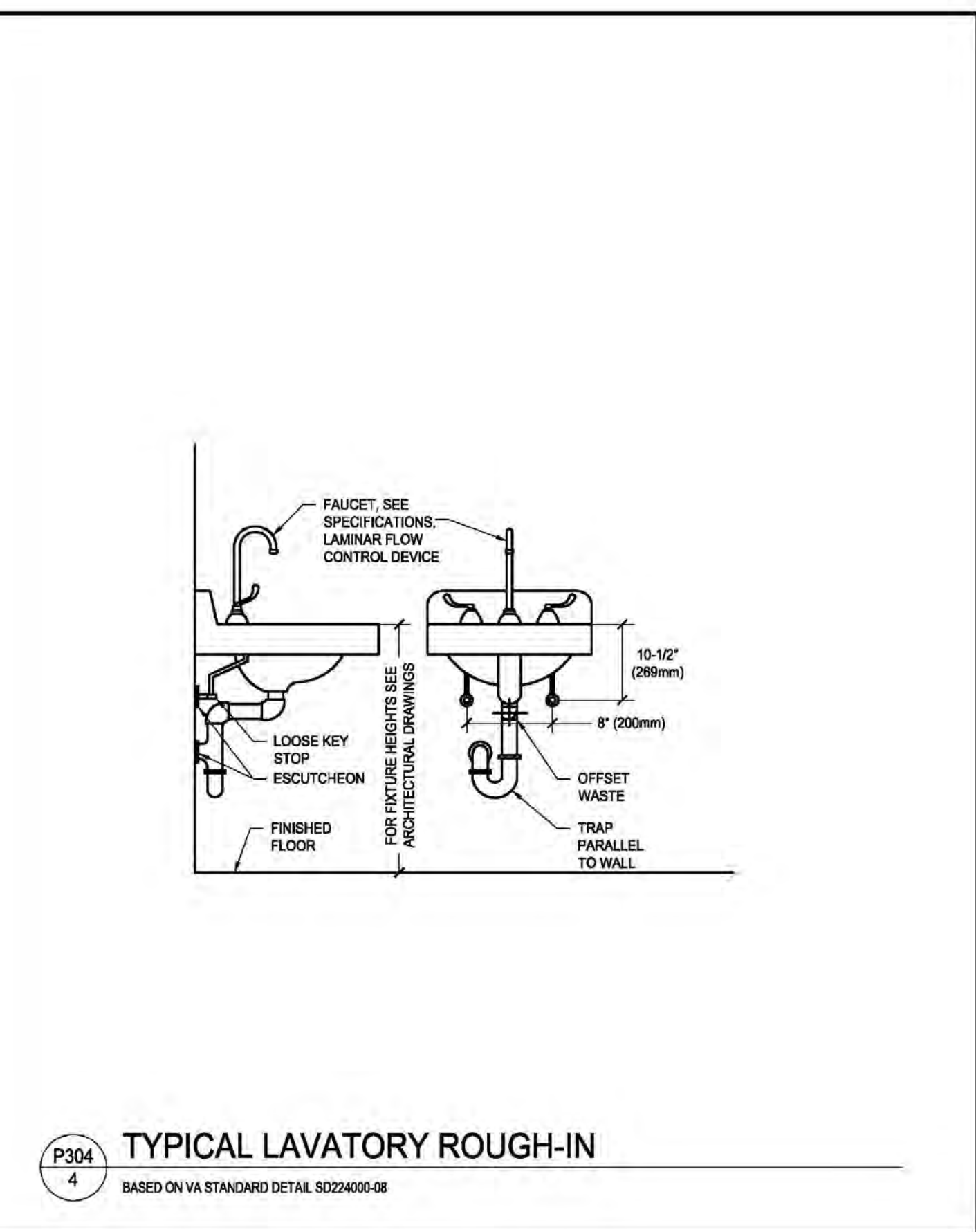
P304 1 PLUMBING PIPE HANGERS
BASED ON VA STANDARD DETAIL S023511-21



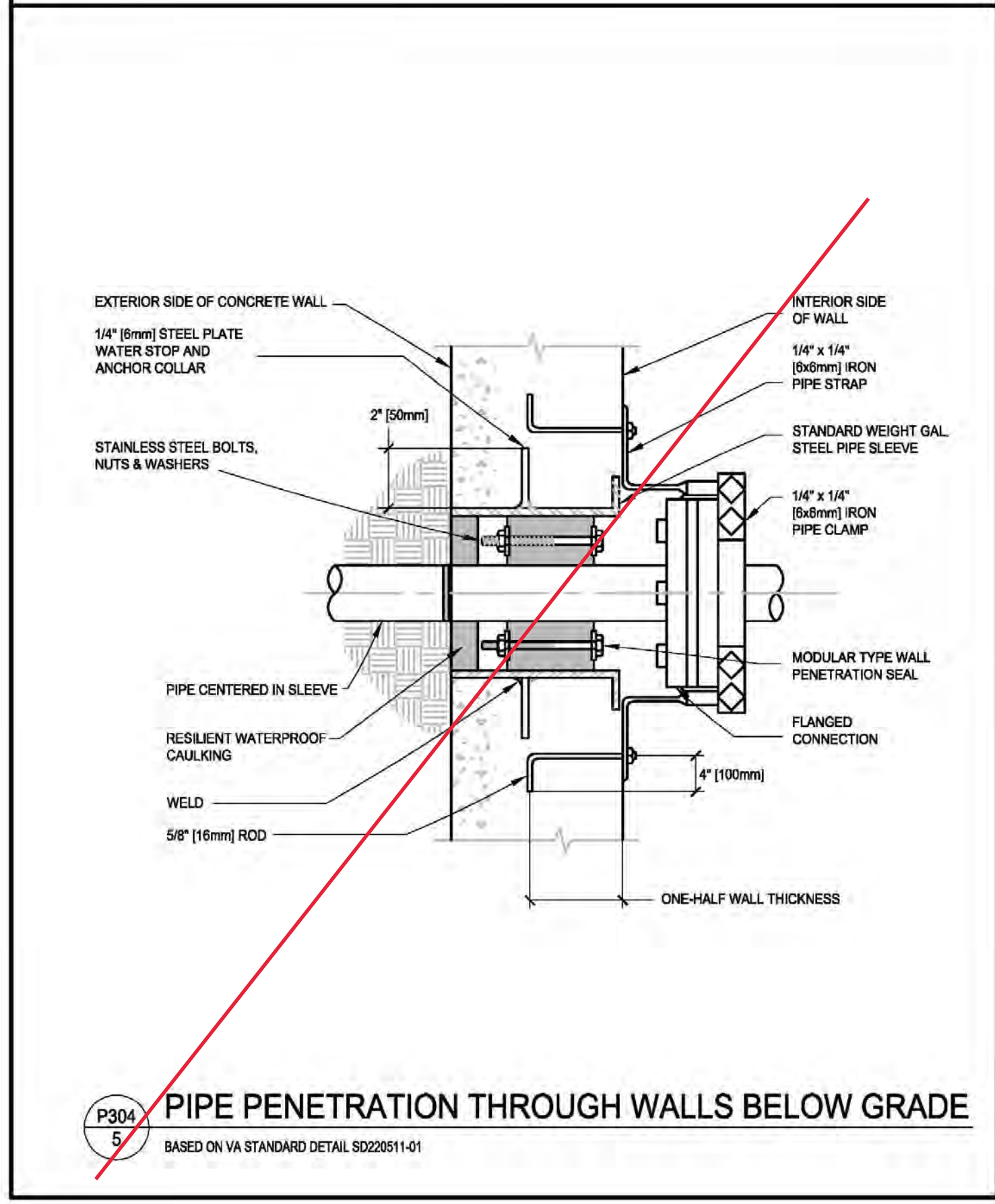
P304 2 SUPPORT FOR PIPE RISERS
BASED ON VA STANDARD DETAIL S023511-25



P304 3 SECURING HANGER RODS IN CONCRETE
BASED ON VA STANDARD DETAIL S023541-05



P304 4 TYPICAL LAVATORY ROUGH-IN
BASED ON VA STANDARD DETAIL S024003-08



P304 5 PIPE PENETRATION THROUGH WALLS BELOW GRADE
BASED ON VA STANDARD DETAIL S022611-01



P304 6 OMITTED