

RELOCATE REHAB FUNCTIONS PROJECT #656-16-277

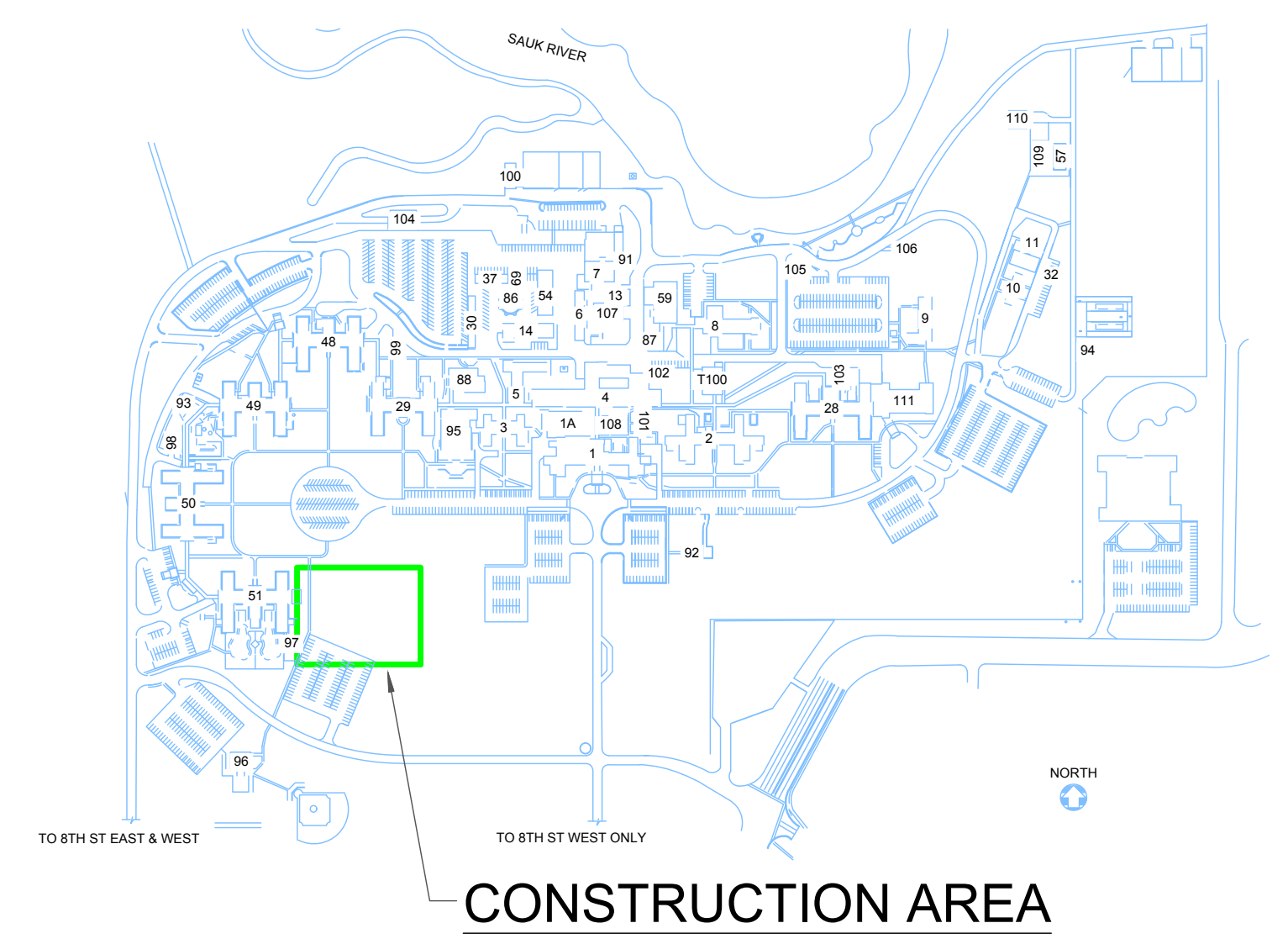
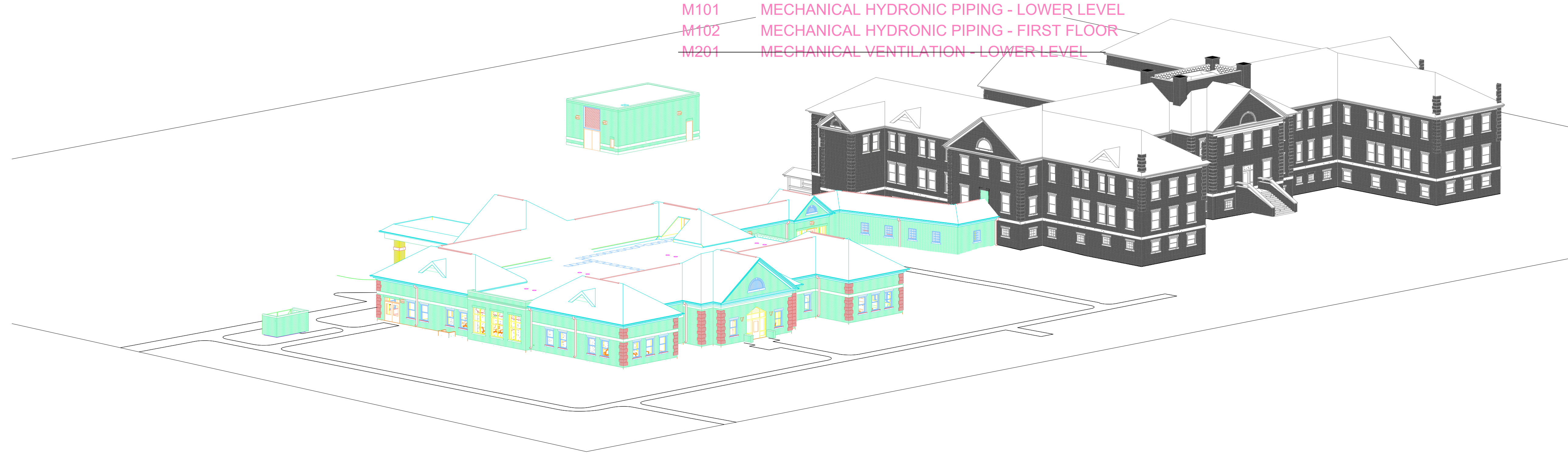
St. Cloud VA Health Care System Main Campus, St. Cloud, Minnesota

RECORD DRAWINGS
(Project #656-332)
(FOR REFERENCE ONLY)

| General | | Sheet Schedule | |
|--------------------------|---|----------------|--|
| | G001 | TITLE SHEET | |
| | G201 | CODE PLAN | |
| Civil | | Sheet Schedule | |
| C1 | CIVIL DEMOLITION PLAN | | |
| C2 | GRADING PLAN | | |
| C3 | STORM WATER POLLUTION PREVENTION PLAN | | |
| C4 | STORM WATER POLLUTION PREVENTION PLAN | | |
| C5 | UTILITY PLAN | | |
| C6 | SIGNAGE, PAVEMENT MARKINGS AND PAVEMENT PLAN | | |
| C7 | UNDERGROUND STORM INFILTRATION SYSTEM DETAILS | | |
| V1 | SITE SURVEY FOR REFERENCE | | |
| Landscape | | Sheet Schedule | |
| L100 | LANDSCAPE PLAN | | |
| L101 | IRRIGATION ZONE PLAN | | |
| L200 | LANDSCAPE DETAILS | | |
| L300 | LANDSCAPE DETAILS | | |
| Structural | | Sheet Schedule | |
| S001 | GENERAL STRUCTURAL NOTES | | |
| S101 | LOWER LEVEL AND TRASH ENCLOSURE FOUNDATION PLANS | | |
| S201 | MAIN LEVEL FRAMING PLAN AND GENERATOR BUILDING PLANS | | |
| S301 | ROOF FRAMING PLAN | | |
| S401 | SECTIONS AND DETAILS | | |
| S402 | SECTIONS AND DETAILS | | |
| S403 | SECTIONS AND DETAILS | | |
| Architectural Demolition | | Sheet Schedule | |
| AD101 | DEMOLITION PLANS AND SECTION | | |

| Architectural | | Sheet Schedule | |
|-----------------|---|----------------|--|
| A001 | SYMBOLS & ABBREVIATIONS & WALL TYPES | | |
| A100 | LOWER LEVEL PLAN | | |
| A101 | FIRST FLOOR PLAN | | |
| A102 | PARTIAL PLANS, ELEVATIONS & SCHEDULES | | |
| A108 | ROOF PLAN | | |
| A200 | REFLECTED CEILING PLAN - LOWER LEVEL | | |
| A201 | REFLECTED CEILING PLAN - FIRST FLOOR | | |
| A301 | INTERIOR ELEVATIONS | | |
| A401 | INTERIOR DETAILS | | |
| A402 | STAIR SECTIONS AND DETAILS | | |
| A403 | INTERIOR DETAILS - MODULAR CASEWORK | | |
| A501 | EXTERIOR ELEVATIONS | | |
| A601 | BUILDING & WALL SECTIONS | | |
| A602 | WALL SECTIONS | | |
| A603 | WALL SECTIONS AND DETAILS | | |
| A701 | EXTERIOR DETAILS | | |
| A702 | EXTERIOR DETAILS | | |
| A801 | DOOR TYPES, WINDOW TYPES & FRAME DETAILS | | |
| A802 | DOOR SCHEDULE | | |
| Interiors | | Sheet Schedule | |
| I101 | FINISH PLAN | | |
| I201 | ROOM FINISH SCHEDULE | | |
| Plumbing | | Sheet Schedule | |
| P101 | PLUMBING LOWER LEVEL | | |
| P201 | PLUMBING FIRST FLOOR | | |
| P301 | WASTE AND VENT RISERS | | |
| P302 | DOMESTIC WATER RISERS | | |
| P303 | PLUMBING DETAILS | | |
| P304 | PLUMBING DETAILS | | |
| Mechanical | | Sheet Schedule | |
| M001 | MECHANICAL SYMBOLS AND ABBREVIATIONS | | |
| M101 | MECHANICAL HYDRONIC PIPING - LOWER LEVEL | | |
| M102 | MECHANICAL HYDRONIC PIPING - FIRST FLOOR | | |
| M201 | MECHANICAL VENTILATION - LOWER LEVEL | | |

| Electrical | | Sheet Schedule | |
|------------------|---|----------------|--|
| E001 | ELECTRICAL SYMBOLS & ABBREVIATIONS | | |
| E100 | POWER & SIGNAL BASEMENT | | |
| E101 | POWER & SIGNAL FIRST FLOOR | | |
| E200 | LIGHTING BASEMENT | | |
| E201 | LIGHTING FIRST FLOOR | | |
| E300 | ONE-LINE DIAGRAM | | |
| E301 | PANELBOARD SCHEDULE | | |
| E400 | ELECTRICAL SCHEDULES | | |
| EC101 | ELECTRICAL SITE PLAN | | |
| Fire Protection | | Sheet Schedule | |
| FP100 | FIRE PROTECTION SYSTEM LOWER LEVEL | | |
| FP101 | FIRE PROTECTION SYSTEM MAIN FLOOR | | |



GENERAL CONDITIONS

All dimensions on drawings are approximate. Drawings are not to be scaled. It is the responsibility of the contractor to verify all field conditions and physical dimensions that influence the construction area.

It is recommended that contractors visit the proposed construction site prior to submitting their bids and they are encouraged to do so.

Contractor shall adhere strictly to State and Federal Occupational Safety and Health Administration (OSHA) Standards.

Contractor shall park only in the designated parking areas and are not to park on the lawn areas; the only exception is to load or unload supplies or equipment.

Contractor is responsible for the safeguarding of their tools and equipment. All tools and equipment are not to be left unattended and are to be secured at all times when the contractor is not present, or the construction site is not supervised by the contractor.

All VA property is to be safeguarded from damage. Any damaged VA property is to be restored to original condition prior to damage or replaced completely. This includes installation, labor, and procurement expenses.

All demolished material becomes the property and the responsibility of the contractor with the exception of specified items designated either in the plans or verbally requested by the COTR for the VA. Offsite disposal of the demolished items is the responsibility of the contractor.

Contractor must control demolition and construction dust from facility by erecting a dust barrier and ventilation with hepa filters. If venting to outside, the contractor will insure negative air pressure is maintained in encapsulated work area. When transporting debris, wet down sufficiently to prevent dust spreading.

If scaffolding is used, it must be used in accordance with (OSHA) regulations and is to be enclosed for the first eight feet above ground at end of each working day, until dismantled. Ladders must be removed and locked up at the end of each working day to prevent unauthorized persons from having access.

Clean all debris from construction site to the satisfaction of the COTR.

Contractor is responsible for erecting a barrier around work site to prevent patients, staff and visitors from entering construction site. This fence may be a plastic snow fence. Coordinate construction materials and location of fence with COTR.

Contractor is responsible for repairing and replacing any damaged lawn. The restoration will be performed by a landscape contractor that regularly does sodding as part of their business. All damaged lawn will be overcut by 6" or more to accommodate full width rolls of sod. Top soil to be filled and graded to a smooth matching grade of undamaged lawn. Sod to be thoroughly saturated with water upon placement. The contractor is responsible for watering new sod until project acceptance by the COTR.

Access to all buildings and parking areas must be maintained throughout the project.

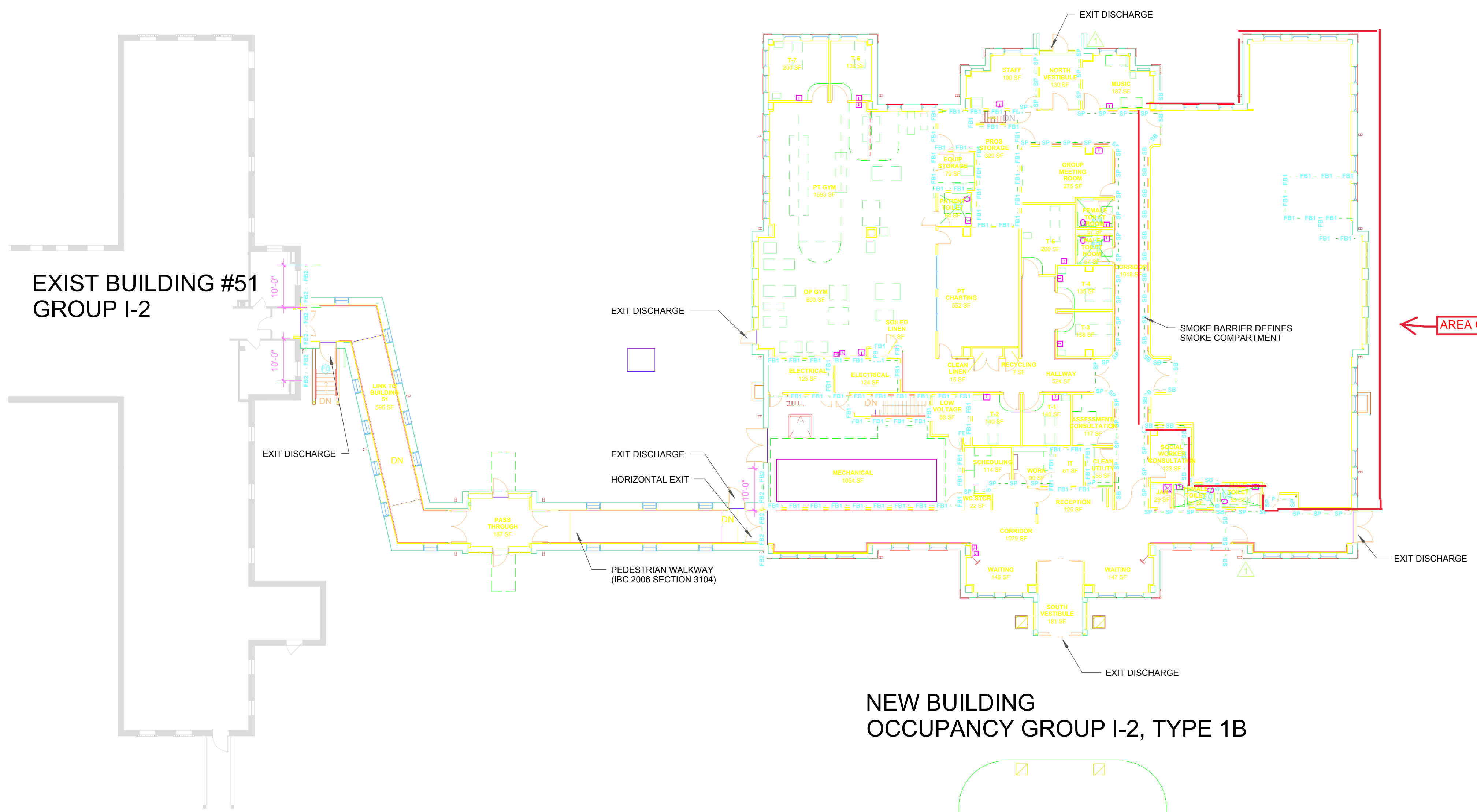
Contractors are to coordinate all work with the Contracting Officers Technical Representative. (C.O.T.R.)

| | | | |
|--|------------|--|--|
| 9/30/16 | RECORD SET | <p>505 East Grant Street, Minneapolis, MN 55404-1490 T 612.332.4422 F 612.344.1282 hortyelving.com</p> | <p>Planning Architecture Engineering Interior Design Construction Management Design Build</p> <p>Horty Elving & Associates, Inc.</p> |
| A/E OF RECORD FOR THE ORIGINAL DESIGN. FOR REFERENCE ONLY - TYP OF ALL SHEETS. | | | |
| NO | REVISION | DATE | |

| | | | |
|-----------------------------------|------|----------------------------------|------|
| CONSTRUCTION DOCUMENTS | | | |
| APPROVED SERVICE LINE DIRECTOR | DATE | APPROVED INFECTION CONTROL NURSE | DATE |
| APPROVED O&M COORDINATOR | DATE | APPROVED PATIENT SAFETY | DATE |
| APPROVED PROJECTS SECTION MANAGER | DATE | APPROVED CHIEF OF POLICE | DATE |
| APPROVED DIRECTOR FMS | DATE | APPROVED SAFETY MANAGER | DATE |

| | | | | | |
|-------------------------|------------|--|------|------------------|--|
| DRAWING TITLE | | PROJECT TITLE | | DATE | |
| TITLE SHEET | | REHABILITATION CENTER PROJECT #656-332 | | 11/13/2018 | |
| | | St. Cloud VA Health Care System | | PLOT SCALE | |
| | | PROJECT NO. S1430 | | DRAWING NO. G001 | |
| BUILDING NO. | CHECKED BY | DESIGNER | | | |
| 116 | | | | | |
| APPROVED CHIEF OF STAFF | DATE | APPROVED MEDICAL CENTER DIRECTOR | DATE | | |
| | | | | | |





WALL RATING LEGEND

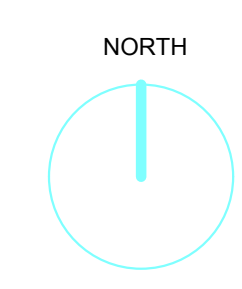
- SMOKE PARTITION
- SMOKE BARRIER
- FIRE PARTITION (1 HR RATED)
- FIRE BARRIER (1 HR, 2HR RATED x INDICATES HOUR RATING)
- FIRE WALL (1 HR, 2HR RATED x INDICATES HOUR RATING)
- LEAD LINED WALL

SMOKE BARRIER PARTITIONS TO BE CONTINUOUS FROM FLOOR TO STRUCTURE ABOVE. REFER TO PLANS FOR LOCATIONS AND EXTENTS. PASSAGE OF PIPES, CONDUITS, DUCTS, CABLES AND SIMILAR EQUIPMENT SHALL BE SEALED WITH A MATERIAL CAPABLE OF MAINTAINING FIRE AND SMOKE RESISTANCE - REFER TO SEC 07240

AREA OF WORK

NEW BUILDING
OCCUPANCY GROUP I-2, TYPE 1B

1 CODE PLAN - FIRST FLOOR
1/16" = 1'-0"



REGULATORY INFORMATION

| | Floor Area | Allowable Area | IBC Building Type LSC Building Type | IBC Occupancy Type LSC Occupancy Type |
|---|------------|----------------|--|--|
| Area of New Construction (Building) | 17,292 SF | | | |
| Total Area (with Pedestrian Walkway (IBC 3104)) | 19,047 SF | UNLIMITED AREA | 1B (222) | I-2 (Healthcare Occupancy) |
| Number of Stories | One | | | |

| Smoke Compartments | Area | Fire Resistance Rating | UL Reference |
|--------------------|-----------|------------------------|--------------|
| Area A | 11,944 sf | | |
| Area B | 5,348 sf | | |

| Building Element | Description | Fire Resistance Rating | UL Reference |
|---------------------------|--|------------------------|--------------|
| Structural Frame | Reinforced concrete columns & beams | 2 hour | |
| | Steel beam & columns (South Vestibule) | 1 hour | |
| Nonbearing exterior walls | 6" CMU w/face brick | 1 hour | |
| Roof construction | 8" P/C plank | 1 hour | |
| Floor construction | 8" P/C plank w/ 2" topping | 2 hour | |

| Partitions | Description | Fire Resistance Rating | UL Reference |
|---|-------------------------------|----------------------------|--------------|
| Trash, Soiled Linen, Storage & Mechanical Rooms | Metal framing w/ gypsum board | 1 hour | UL-U465 |
| | Stair | 1 hour | UL-U465 |
| Horizontal exit | Metal framing w/ gypsum board | 1 hour | UL-U465 |
| Fire Barriers | Metal framing w/ gypsum board | 1 hour | UL-U465 |
| | | 2 hour | UL-U411 |
| Smoke Barriers | Metal framing w/ gypsum board | 1 hour | UL-U465 |
| Smoke Partition | Metal framing w/ gypsum board | Non Rated - Smoke Limiting | |

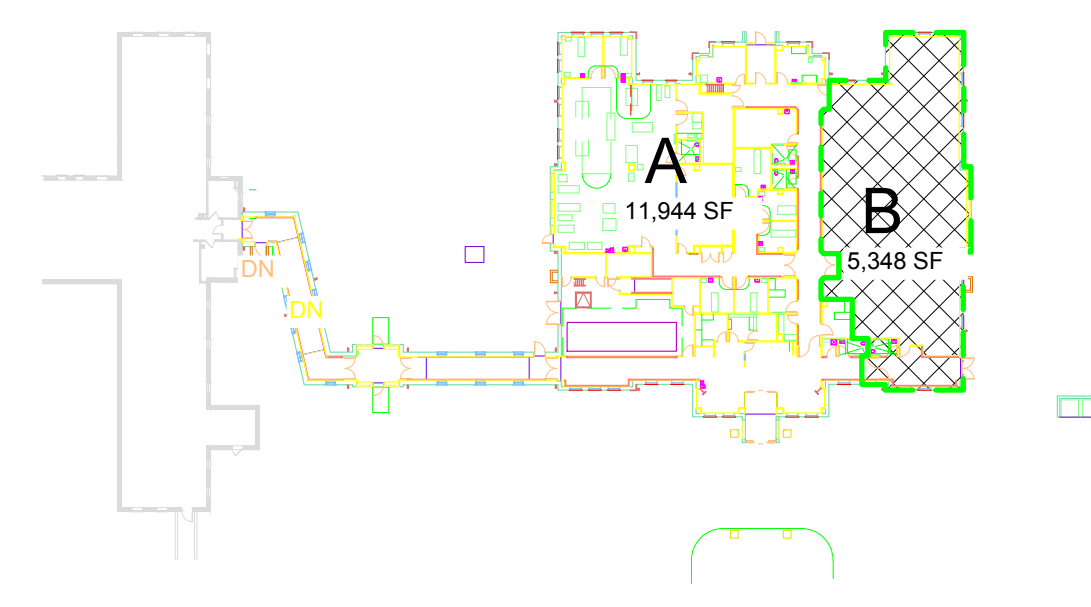
| Door Openings | Description | Fire Resistance Rating | UL Reference |
|---|----------------------------|------------------------|--------------|
| Trash, Soiled Linen, Storage & Mechanical Rooms | 45 Minute | | |
| | Stair | 60 minute | |
| Horizontal exit | 90 Minute | | |
| Fire Barriers (1 hour) | 60 Minute | | |
| | 90 Minute | | |
| Smoke Barriers | 20 Minute | | |
| Smoke Partition | Non Rated - Smoke Limiting | | |

Fire Protection

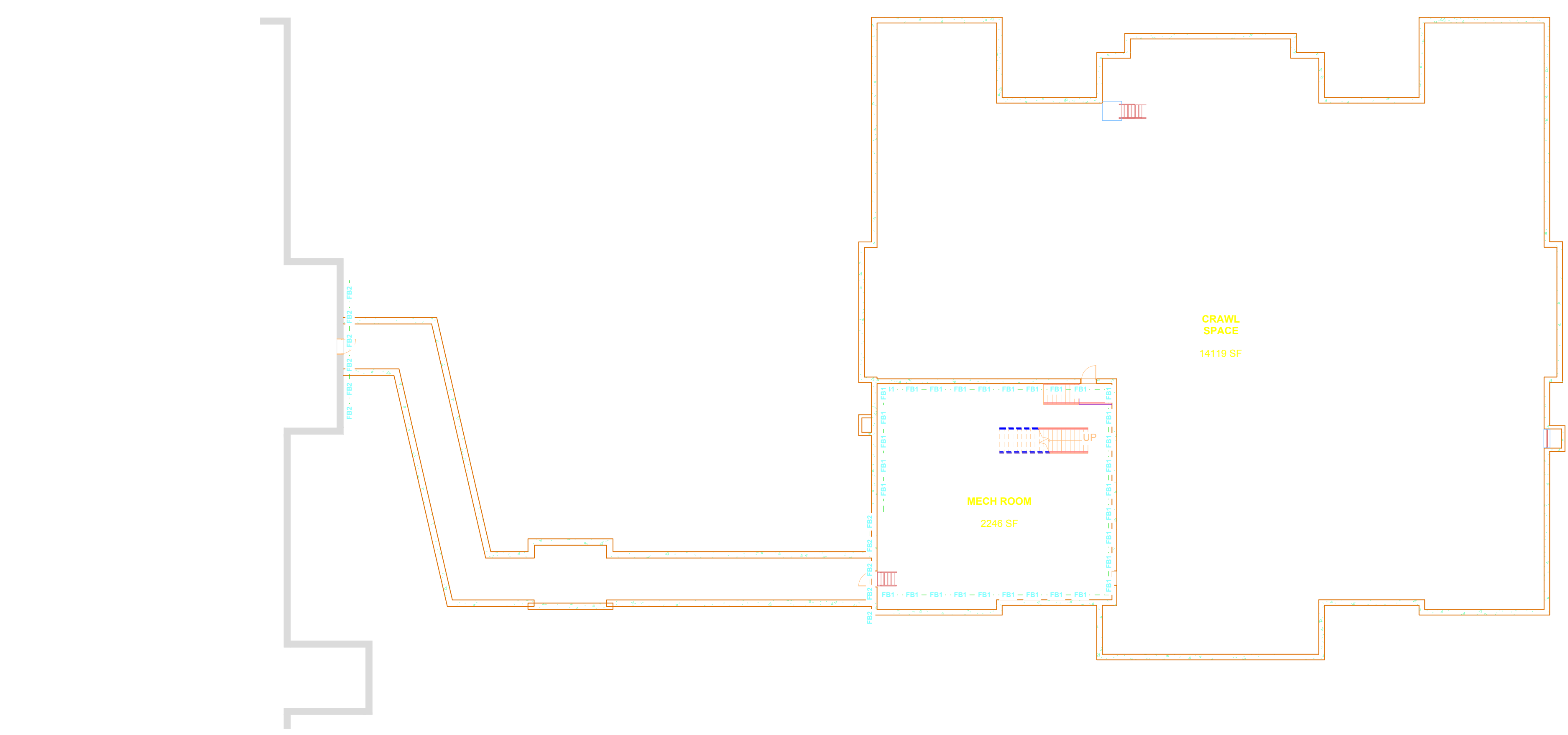
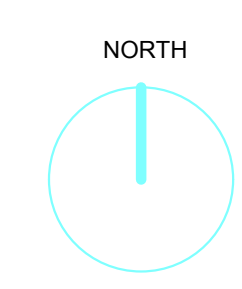
New Fire Sprinkler Throughout New Areas

Code References

- 2006 International Building Code
- 2006 International Fire Code
- 2006 International Mechanical Code w/ MN Amendments
- 2007 Minnesota State Building Code
- 2009 Minnesota State Plumbing Code
- 2009 Minnesota State Energy Code
- 2008 National Electrical Code
- NFPA 101 2012, Life Safety Code
- NFPA 99 2006, Health Care Facilities
- Americans with Disabilities Act with VA Supplement
- Guidelines for Construction and Equipment of Hospitals and Medical Facilities - American Institute of Architects Committee on Architecture for Health Care 2010
- ASHRAE 90.1 2006
- MN SHPO
- Architectural Barriers Act Accessibility Standards including Barrier Free Design Guide
- Uniform Federal Accessibility Standards
- OSHA
- VA HVAC DESIGN GUIDE
- 2009 INTERNATIONAL PLUMBING CODE



3 CODE PLAN - FIRST FLOOR SMOKE COMPARTMENT DIAGRAM
1/64" = 1'-0"



2 CODE PLAN - LOWER LEVEL PLAN
1/16" = 1'-0"

| No | REVISION | DATE |
|----|----------|---------------------|
| 1 | 6/2/15 | Code Review Changes |
| 2 | 9/30/16 | RECORD SET |

Horty Elving
505 East Grant Street, Minneapolis, MN 55404-1490
T 612.332.4422 F 612.344.1282 hortyelving.com

Planning
Architecture
Engineering
Interior Design
Construction Management
Design Build
Horty Elving & Associates, Inc.

I hereby certify that this plan, specification, or report was prepared by me or under my direct supervision and that I am a duly Licensed Architect under the laws of the State of Minnesota.

Sarah Mah
Date: 10/11/2018 License No. 49083

© COPYRIGHT This drawing is the copyrighted work of architect and/or engineer. Modification or reproduction of these documents without express written consent of Architect is prohibited. The architect or related service performed or furnished by the Architect for this project and provided subject to this plan and all other rights reserved by members of the architectural profession practicing under license in accordance with the same time and in the same locality. Architect makes no warranties, express or implied, in connection with this services.

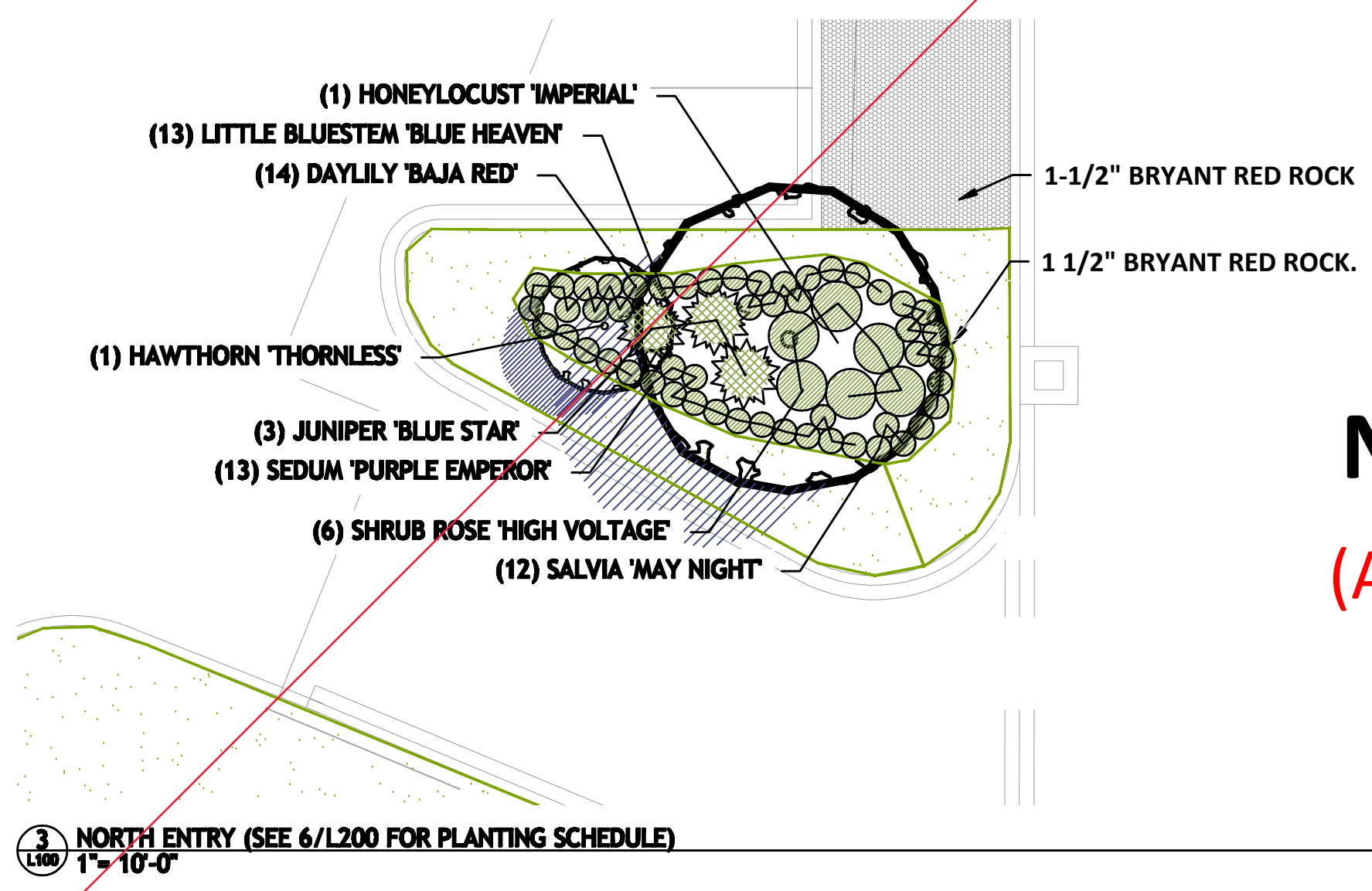
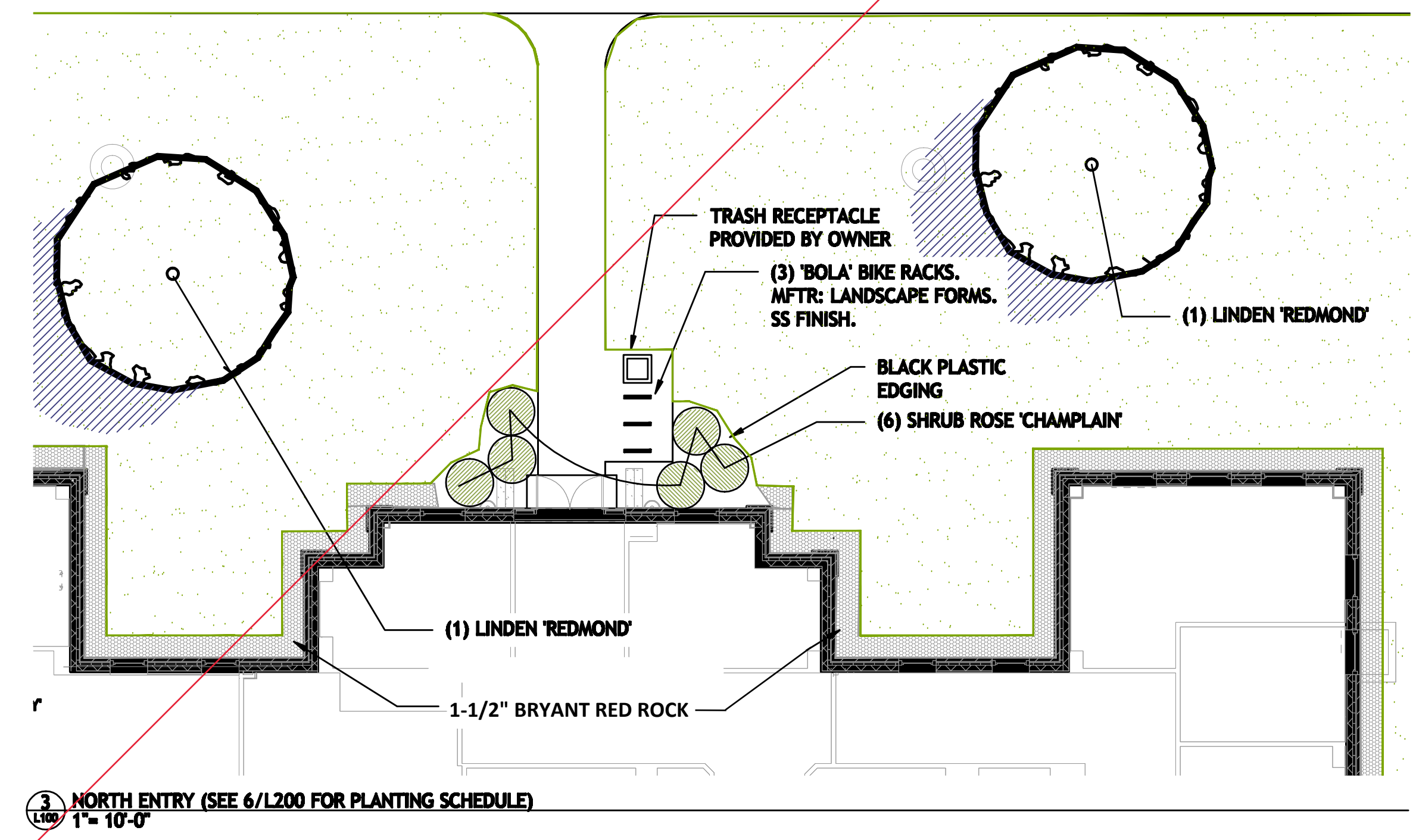
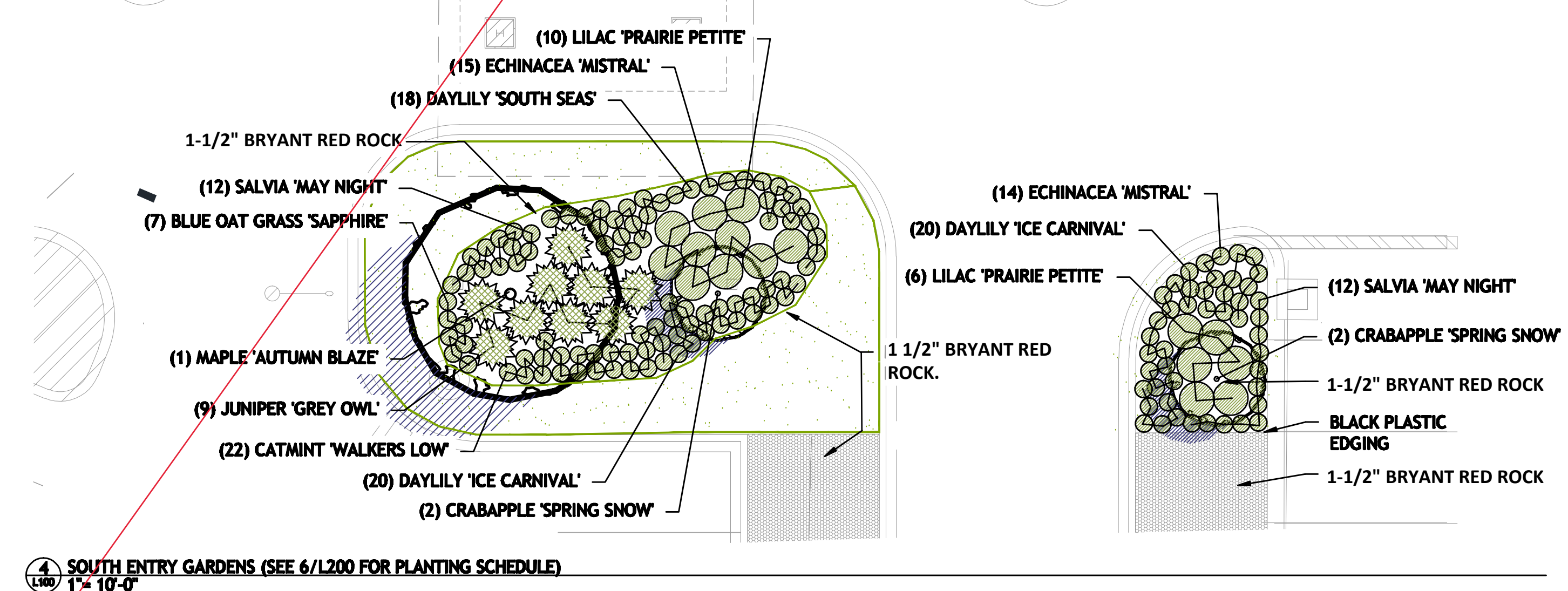
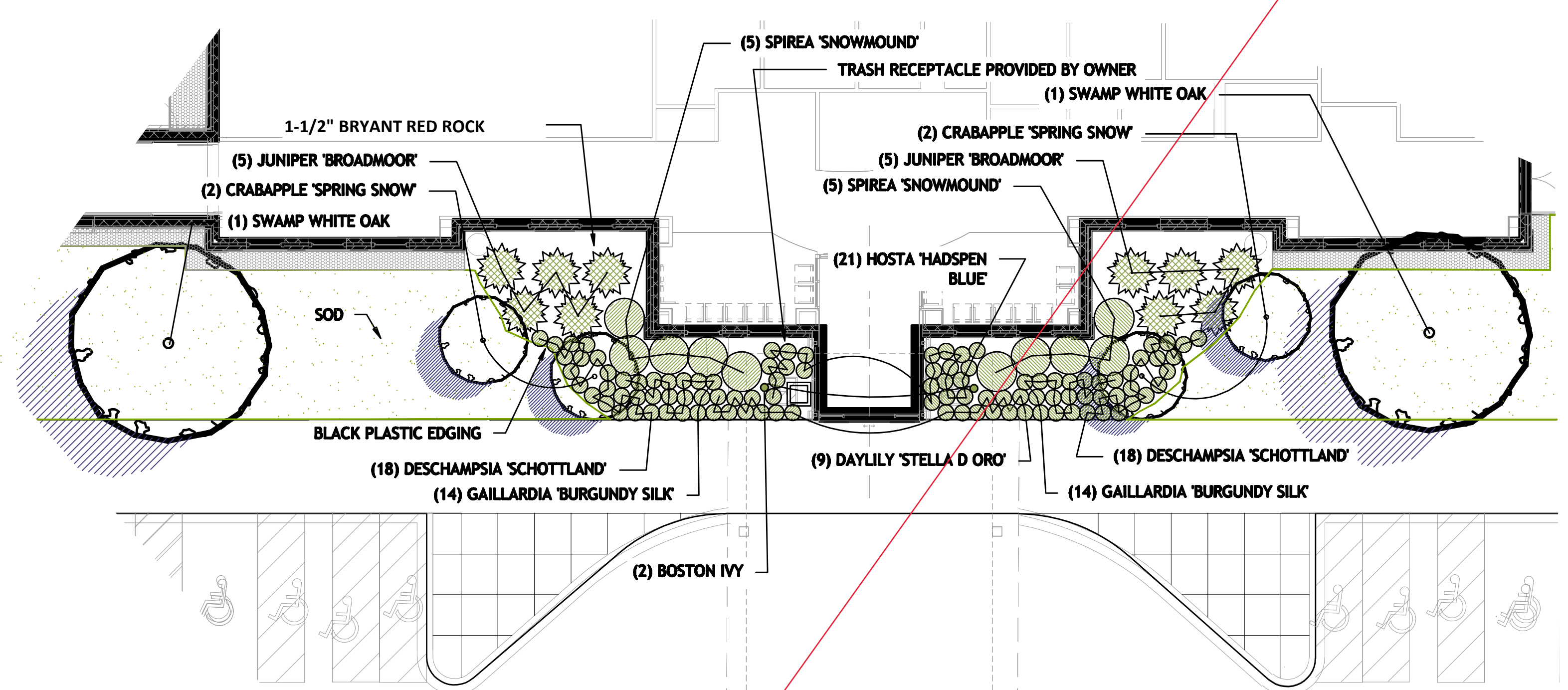
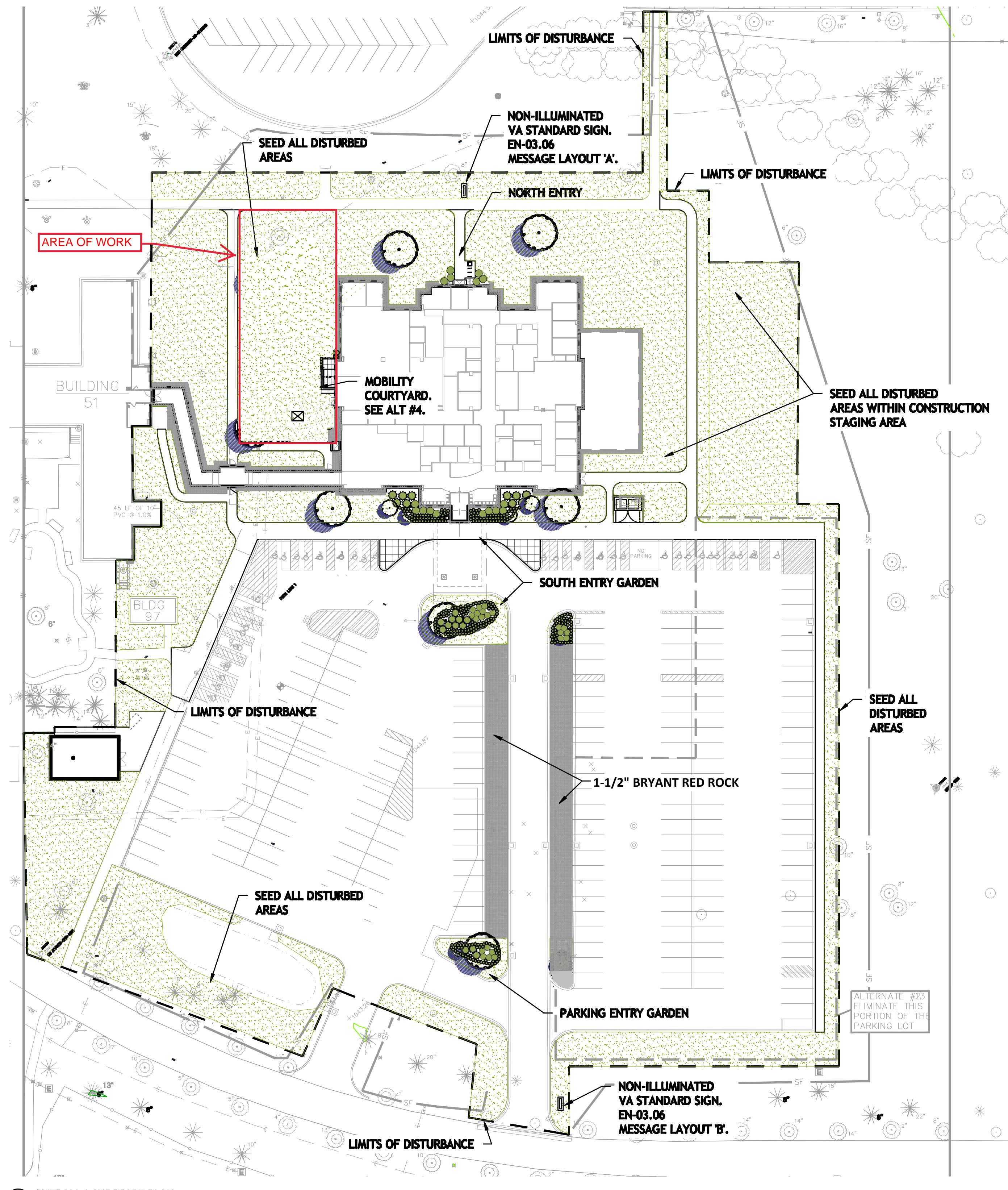
| APPROVED SERVICE LINE DIRECTOR | DATE | APPROVED INFECTION CONTROL NURSE | DATE |
|-----------------------------------|------|----------------------------------|------|
| APPROVED DEHS COORDINATOR | DATE | APPROVED PATIENT SAFETY | DATE |
| APPROVED PROJECTS SECTION MANAGER | DATE | APPROVED CHIEF OF POLICE | DATE |
| APPROVED DIRECTOR EMS | DATE | APPROVED SAFETY MANAGER | DATE |

| DRAWING TITLE | | | |
|----------------------------------|------|----------------------------------|------|
| CODE PLAN | | | |
| APPROVED CHIEF OF STAFF | DATE | APPROVED CHIEF OF STAFF | DATE |
| APPROVED MEDICAL CENTER DIRECTOR | DATE | APPROVED MEDICAL CENTER DIRECTOR | DATE |

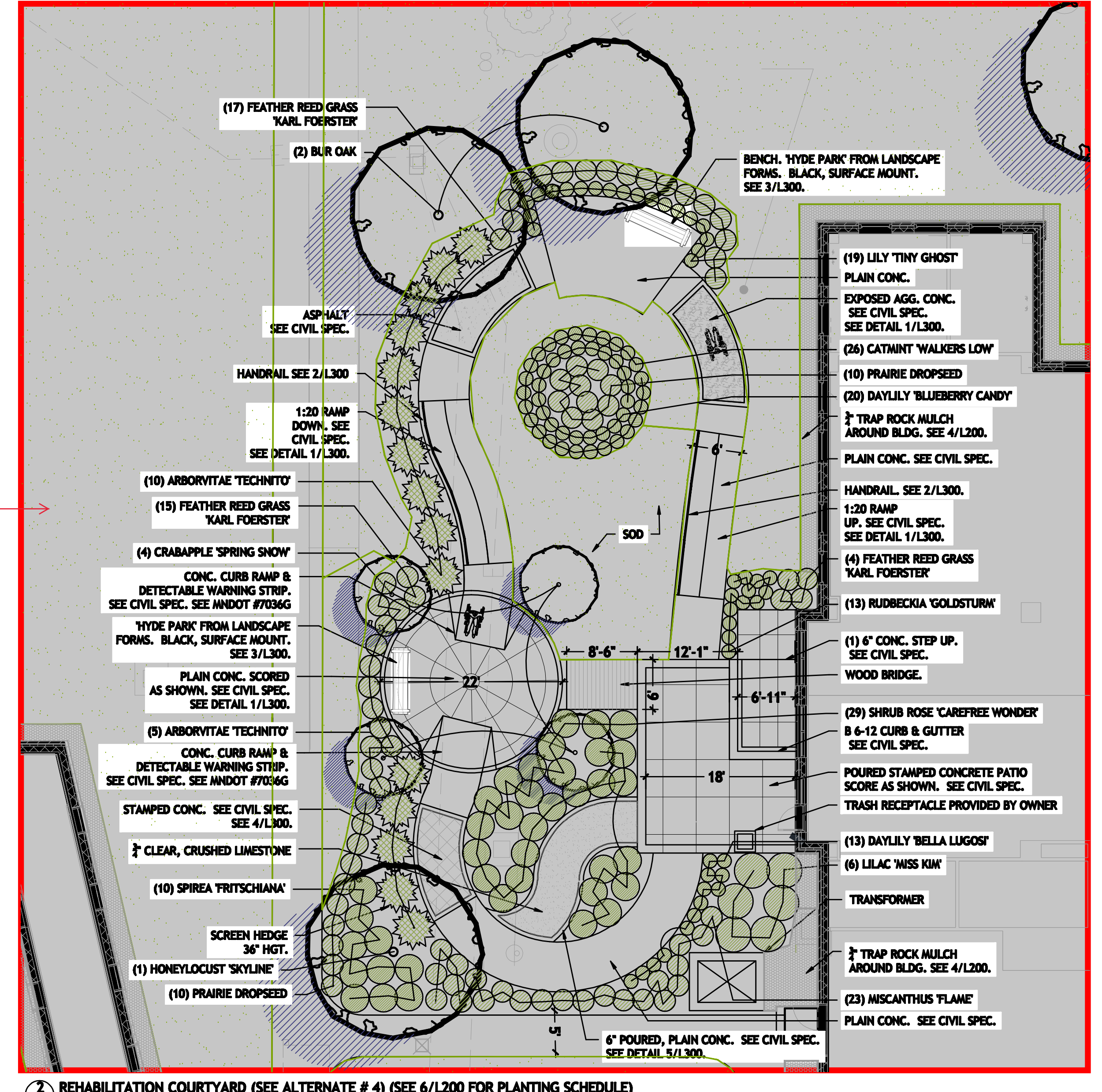
| PROJECT TITLE | | DATE |
|--|------------|-------------------|
| REHABILITATION CENTER PROJECT #056-332 | | 11/13/2018 |
| St. Cloud VA Health Care System | | PROJECT NO. S1430 |
| BUILDING NO. | CHECKED BY | DRAWING NO. |
| 116 | | G201 |

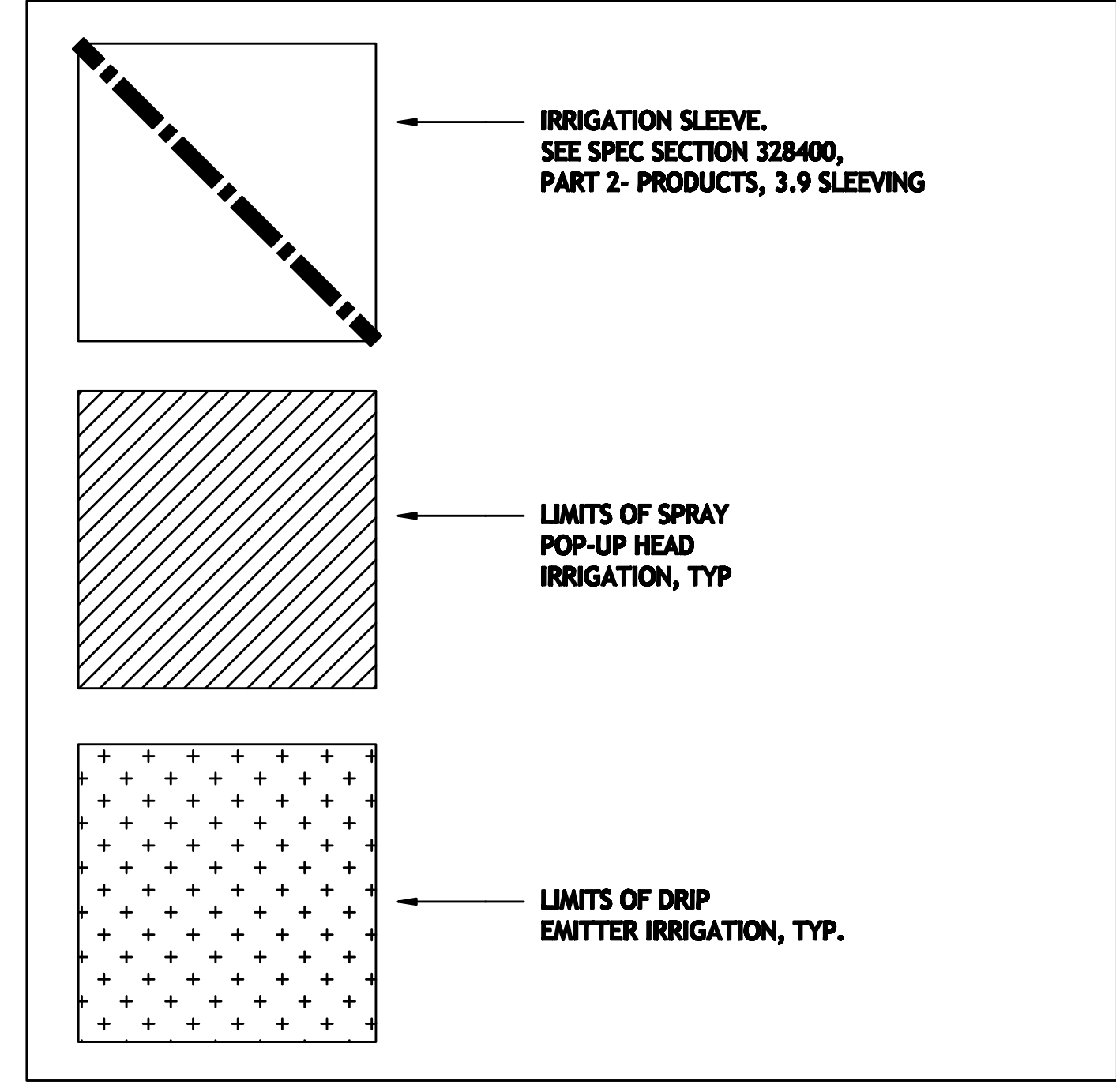
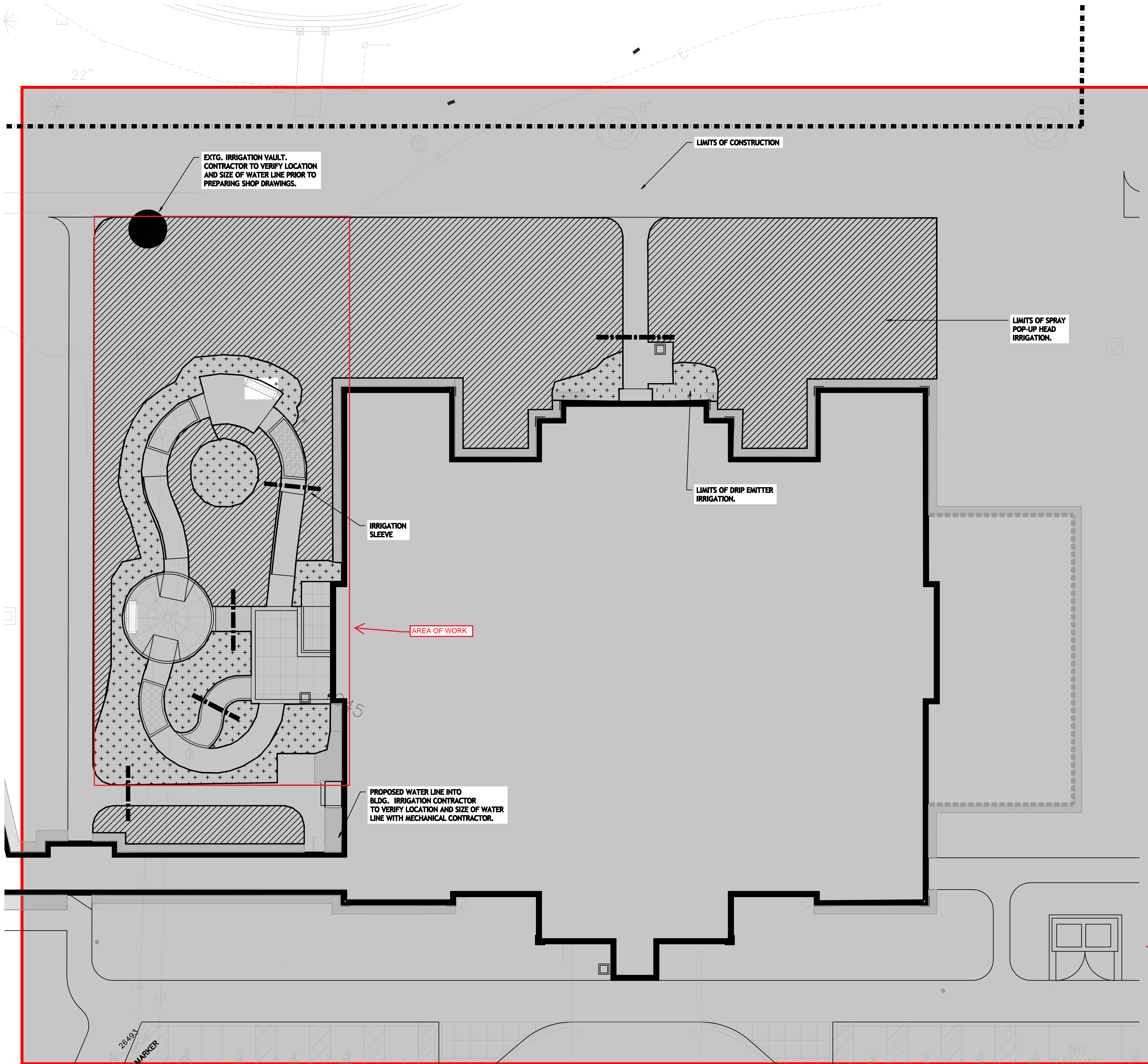


NOTE: ALL LANDSCAPE MULCH CHANGED TO 1-1/2" BRYANT RED ROCK.



NEW SCOPE
(AREA OF WORK)





2 IRRIGATION ZONE LEGEND
NTS

IRRIGATION NOTES

- 1 Only hatched areas of the site are to be irrigated . See spec **SECTION 32 84 00 DESIGN/BUILD IRRIGATION SYSTEM**
- 2 Irrigation system shall be design-build, controlled by performance specification. Landscape architect and Project Engineer shall review shop dwgs prior to installation.
- 3 Turf irrigation shall be on separate zone(s) from shrub & perennial beds.
- 4 Irrigation spray shall be directed away from foundations, walls, and paving to the extent possible.
- 5 See sheet L100 Landscape Plan for locations of sod, perennial, and shrub beds.
- 6 Irrigation contractor to coordinate with landscape contractor on system installation and scheduling.
- 7 Irrigation contractor to coordinate with mechanical contractor on stubbing of irrigation water line outside the building and installation of backflow preventer, control boxes, and any work within the mechanical room.
- 8 Alternate #6- Eliminate entire irrigation system.

3 IRRIGATION NOTES
NTS

1 IRRIGATION ZONE PLAN (SEE ALTERNATE # 6)
1" = 10'-0"

9/30/16 Record Set

Horty Elving

505 East Grant Street, Minneapolis, MN 55404-1490
T 612.332.4422 F 612.344.1282 hortyelving.com

Planning Architecture Engineering Interior Design Construction Management Design Build
Horty Elving & Associates, Inc.

ben svickson
bsvickson@earthlink.net
OR 612.382.9902

landscap e designs

I hereby certify that this plan, specification, or report was prepared by me or under my direct supervision and that I am a duly Licensed Landscape Architect under the laws of the State of Minnesota.

Ben Svickson License No. 9938

© COPYRIGHT This drawing is the copyrighted work product of Horty Elving & Associates, Inc. and its subsidiaries. No part of this drawing may be reproduced, stored in a retrieval system, or transmitted in any form or by any means, electronic, mechanical, photocopying, recording, or by any information storage and retrieval system, without the prior written permission of Horty Elving & Associates, Inc. The professional or technical services performed or furnished by the architect for this project are provided subject to the terms and conditions set forth in the contract documents and the professional jurisdiction governing such services. Horty Elving & Associates, Inc. does not warrant the accuracy of the information contained herein.

| | | | |
|------------------------------------|------|-------------------------------------|------|
| APPROVED: SERVICE LINE DIRECTOR | DATE | APPROVED: INSPECTION CONTROL NUMBER | DATE |
| APPROVED: O&M COORDINATOR | DATE | APPROVED: PATIENT SAFETY | DATE |
| APPROVED: PROJECTS SECTION MANAGER | DATE | APPROVED: CHIEF OF POLICE | DATE |
| APPROVED: DIRECTOR P&B | DATE | APPROVED: SAFETY MANAGER | DATE |

| | |
|-----------------------------------|------|
| APPROVED: CHIEF OF STAFF | DATE |
| APPROVED: MEDICAL CENTER DIRECTOR | DATE |

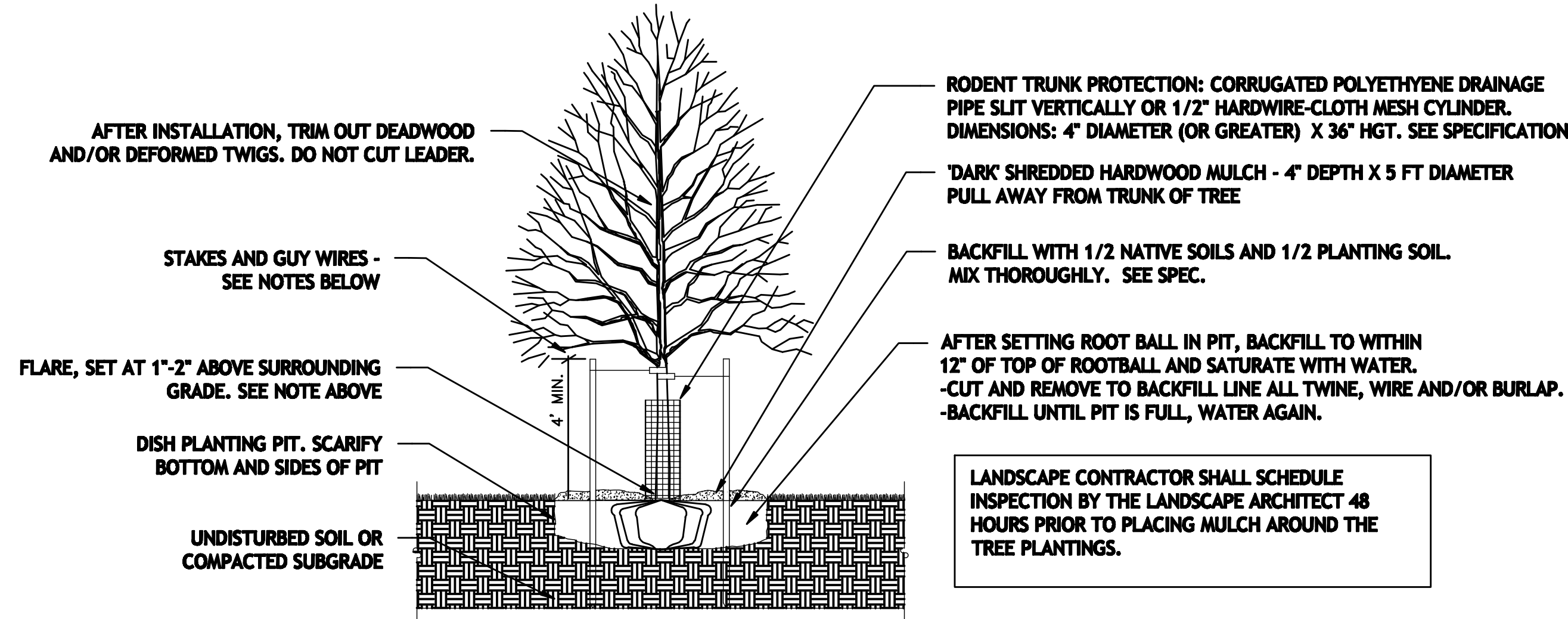
DRAWING TITLE
IRRIGATION ZONE PLAN

| | |
|---|----------------------|
| PROJECT TITLE REHABILITATION CENTER PROJECT #606-302 St. Cloud VA Health Care System | DATE 01/03/2013 |
| BUILDING NO. 116 | PROJECT NO. S1430 |
| LOCATION VA MEDICAL CENTER ST. CLOUD, MN 56303 | DRAWING NO. L101 |



TREES WILL BE REJECTED FOR THE FOLLOWING REASONS:
 -POOR FORM
 -DAMAGED TRUNK
 -BURIED ROOT FLARES
 -ENCIRCLING TRANSPORT ROOTS
 -UNCONSOLIDATED ROOTBALL SOIL (DUE TO EXCESSIVE HANDLING)

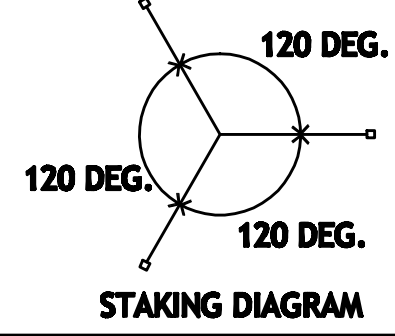
NOTES:
 1) CONTRACTOR SHALL LOCATE WITH PIN THE ROOT FLARE OF EACH TREE PRIOR TO DIGGING THE PLANTING PIT. (THE FLARE IS THE TRANSITION ZONE BETWEEN THE MAIN STEM AND THE ROOT SYSTEM.)
 2) REMOVE SOIL FROM TOP OF ROOTBALL TO EXPOSE TOP OF FLARE. TREES WITH MORE THAN 2" OF EXCESS SOIL ABOVE THE FLARE WILL BE REJECTED. MEASURE DISTANCE BETWEEN FLARE AND BOTTOM OF ROOTBALL. SUBTRACT 10% TO DETERMINE DEPTH OF PLANTING PIT.
 3) DIG PIT TO DEPTH DETERMINED ABOVE. PIT SHALL BE DISHED WITH SIDEWALLS AS SHOWN BELOW. SCARIFY WALLS AND BOTTOM OF PIT.
 4.) SET TREE IN PIT SO THAT FLARE IS ONE-TWO INCHES ABOVE SURROUNDING GRADE.
 5) IN ALL AREAS WITH HEAVY CLAY OR POORLY DRAINED SOILS (MOTTLING), CONTACT LANDSCAPE ARCHITECT. TREE MAY BE RELOCATED OR ROOTBALL FURTHER ELEVATED.



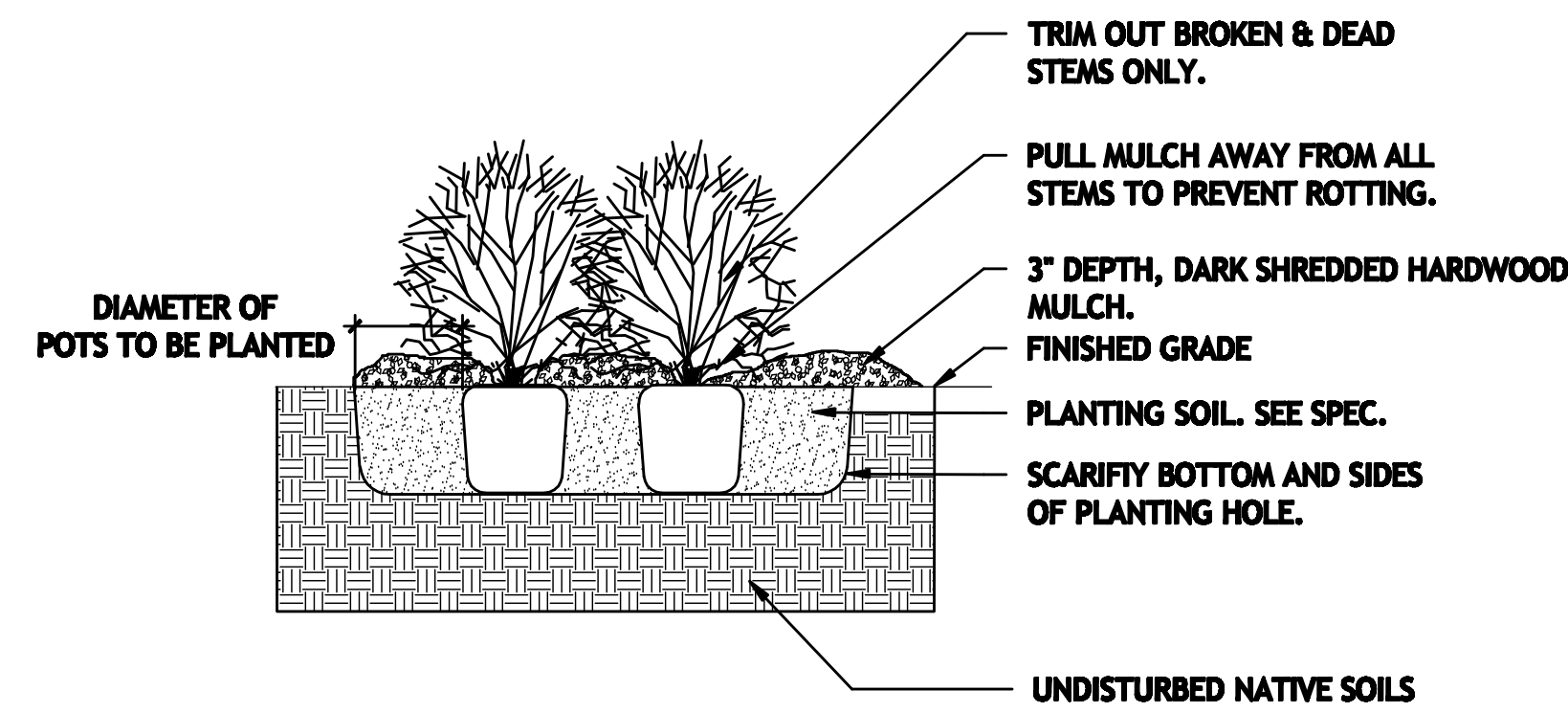
STAKING:
 GUY ASSEMBLY NOT MANDATORY BUT, CONTRACTOR SHALL MAINTAIN TREE IN A PLUMB POSITION FOR THE DURATION OF THE GUARANTEE PERIOD.

GUY ASSEMBLY: 16" POLYPROPYLENE OR POLYETHYLENE (40 MIL) 1-1/2" WIDE STRIP. (TYP.) DOUBLE STRAND 14 GA. WIRE & 3 STEEL STAKES OR SIGN POSTS @ 120 DEG. O.C. (SEE STAKING DIAGRAM).

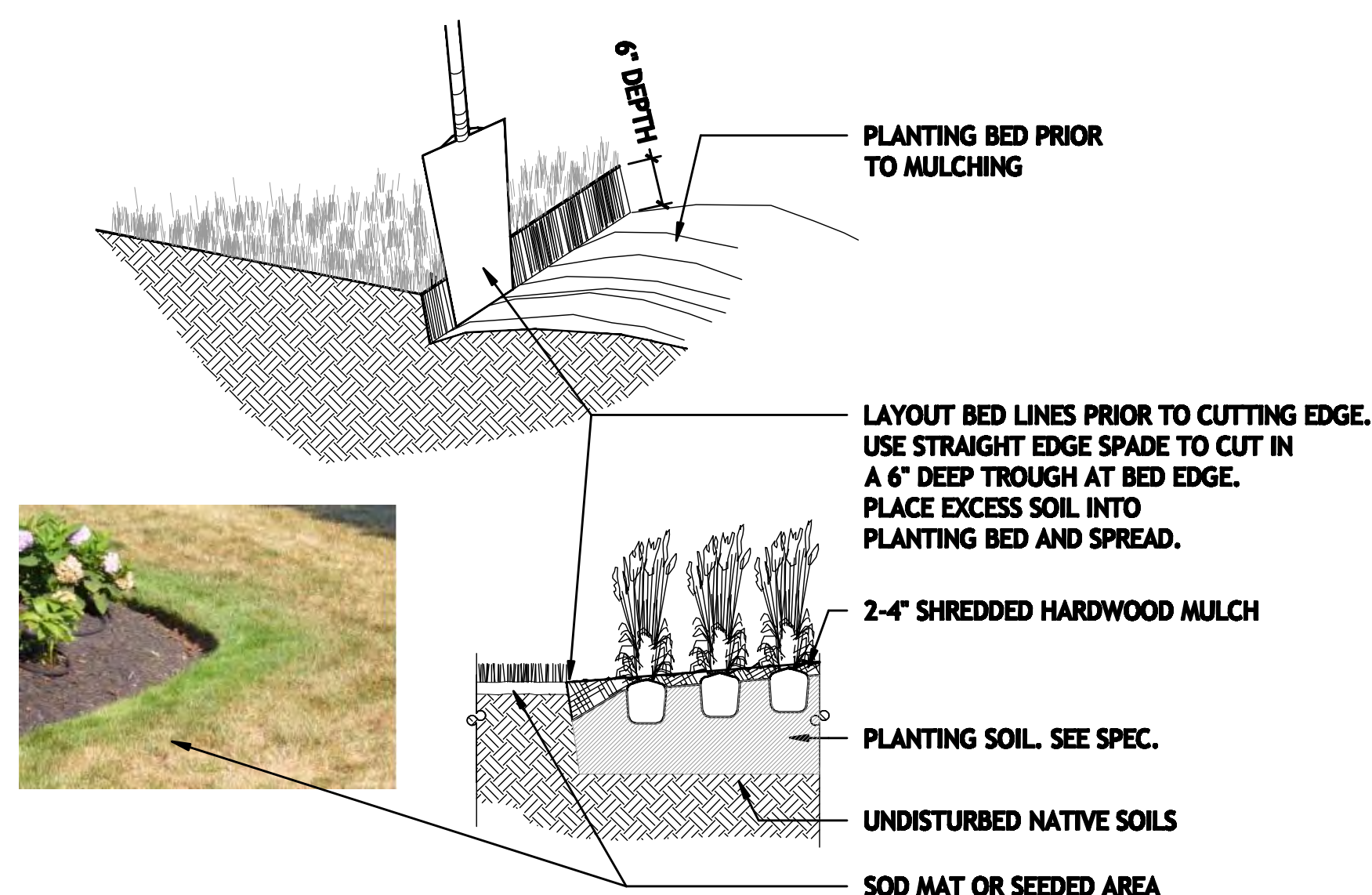
COORDINATE STAKING TO INSURE UNIFORM ORIENTATION OF GUY LINES AND STAKES.



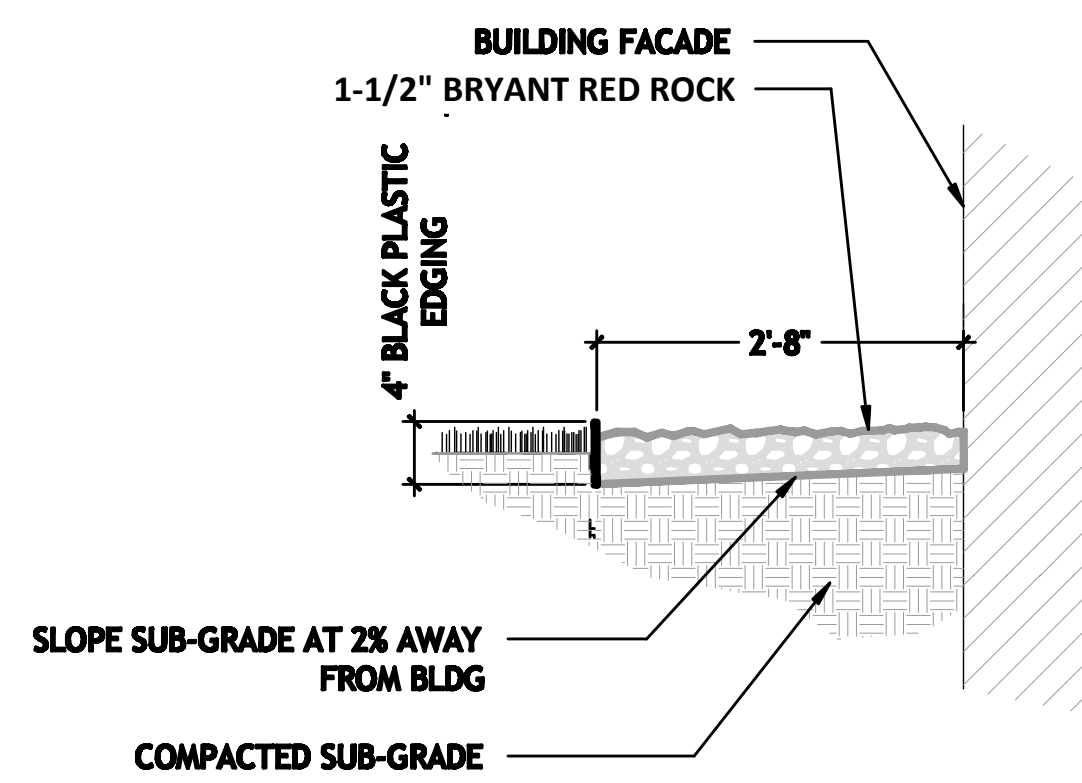
1 TREE PLANTING DETAIL
 NTS



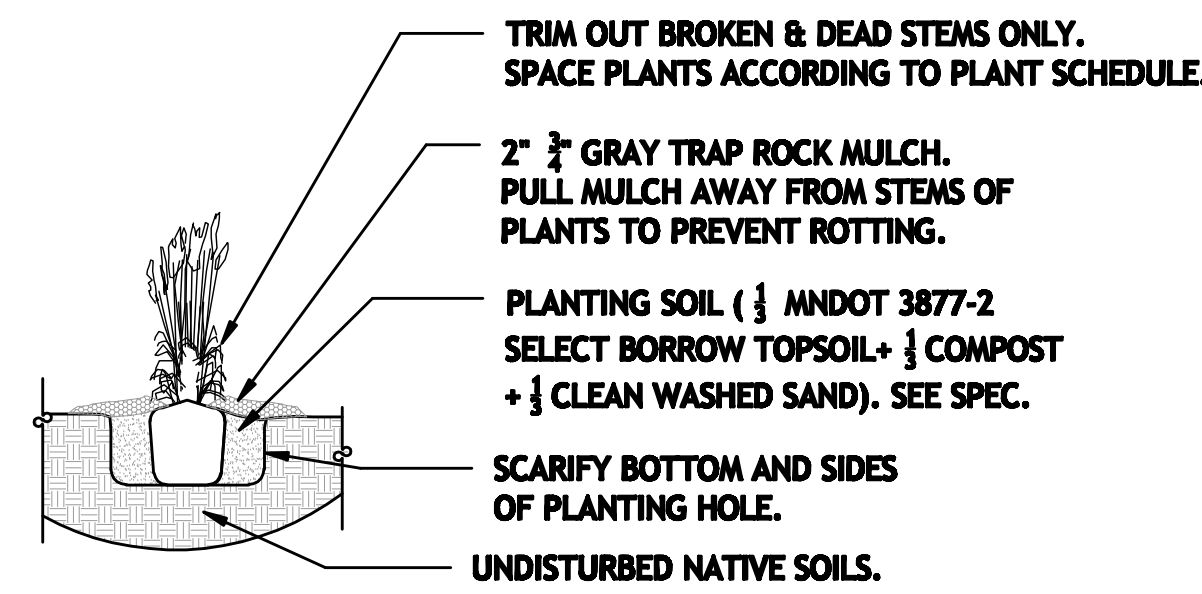
2 SHRUB PLANTING DETAIL
 NTS



3 SPADED EDGE DETAILS
 NTS



4 2'-8" MAINTENANCE STRIP
 NTS



5 PERENNIAL PLANTING DETAIL
 NTS

- All quantities, shapes of beds and locations shall be verified and adjusted as required to conform to the exact conditions of the site. Review with landscape architect prior to digging.
- Locate all utilities, including irrigation lines, with the Owner. Notify the Landscape Architect of any conflicts to facilitate plant relocation. Contractor shall be responsible for the repair of any damages to same.
- The Contractor shall be responsible for complying with all applicable codes, regulations and permits governing the work.
- The Contractor shall be responsible for all mulches and planting soil quantities to complete the work shown on the plan. Verify all quantities shown on the plant schedule.
- The Contractor shall remove from the site all sod/turf which has been removed for new plant beds. Long-term storage of materials or supplies on-site will not be allowed. Any plant stock not planted on day of delivery shall be heeled in and watered until installation. Plants not maintained in this manner will be rejected.
- The Contractor shall keep pavements, planters and buildings clean and unstained. All waste shall be promptly removed from the site. Any damage to existing facilities shall be repaired at the Contractor's expense.
- The plan takes precedence over the plant schedule if discrepancies exist. The specifications take precedence over the planting notes and general notes.
- Amend pH of bed with Iron Sulfate.
- No substitutions of plant materials shall be accepted unless approved in writing by the landscape architect.
- All planting stock shall conform to the 'American Standard for Nursery Stock' ANSI, latest edition, of the American Association of Nurserymen, Inc.
- All plants shall be guaranteed for one year from the date of substantial completion unless otherwise specified. The guarantee shall cover the full cost of replacement, including labor and plants.
- Seasons/Time of Planting:
 Spring: April 15th- June 30th
 Fall: August 15th- Nov 15th

6 PLANTING NOTES
 NTS

- Note: The Contractor may elect to plant in the off-seasons entirely at his/her risk.
- Planting soil for tree and shrub pits: By volume, mix 1/2 native soils with 1/2 imported planting soils. See specs.
 - Planting soil for shrub and perennial beds. Thoroughly mixed in equal parts by volume-1/3 amended topsoil, 1/3 washed sand, 1/3 peat or organic compost. See specs.
 - Fracture all compacted soils. See Soil Decompaction Notes
 - Irrigation system, if specified, shall be fully operational and tested at the time of planting. During first season, contractor shall monitor moisture conditions and adjust irrigation as needed to avoid over and under watering of plant materials during establishment.
 - Mulch: Double shredded hardwood mulch- clean and free of noxious weeds, soil, and other deleterious material. Use for all tree plantings and over all planting beds for shrubs and perennials. Deliver mulch on planting day and mulch all material within 24 hours of installation. Use the following depths: 4 inches for trees, 3 inches for shrubs, 2 inches for perennials. PULL MULCH AWAY FROM THE TRUNKS AND STEMS OF ALL PLANT MATERIAL.
 - Maintenance shall begin immediately after each portion of the work is in place. Plant materials shall be protected and maintained until the installation of all plants is complete. Inspection has been made and the planting accepted, exclusive of the guarantee. Maintenance shall include watering, cultivating, mulching, pruning and removal of dead material, and keeping the plants in a plumb position. After acceptance, the Owner shall assume maintenance responsibilities. The Contractor shall maintain all materials in a plumb position for the duration of the guarantee period.
 - The Contractor shall request in writing a final acceptance inspection.
 - Geotextile fabric shall not be used under mulch. Shrub and perennial bed shall have spaced edges unless plans indicate otherwise.

St. Cloud VA- Plant Schedule

| QTY | COMMON NAME | BOTANICAL NAME | SIZE | CONT | REMARKS |
|-----|------------------------------------|---|--------|------|---------|
| 9 | Large Decid. Trees | | | | |
| 2 | Bur Oak | <i>Quercus macrocarpa</i> | 2.5" | bb | |
| 1 | Honeylocust 'Skyline' | <i>Gleditsia triacanthos in. 'Skyline'</i> | 2.5" | bb | |
| 1 | Honeylocust 'Imperial' | <i>Gleditsia triacanthos in. 'Imperial'</i> | 2.5" | bb | |
| 2 | Linden 'Redmond' | <i>Tilia americana 'Redmond'</i> | 2.5" | bb | |
| 1 | Maple 'Autumn Blaze' | <i>Acer x. 'Jeffersred'</i> | 2.5" | bb | |
| 2 | Swamp White Oak | <i>Quercus bicolor</i> | 2.5" | bb | |
| 14 | Ornamental Trees | | | | |
| 12 | Crabapple 'Spring Snow' | <i>Malus sp. 'Spring Snow'</i> | 2.5" | bb | |
| 2 | Hawthorn | <i>Crataegus crus galli 'inermis'</i> | 2.5" | bb | |
| 92 | Deciduous Shrubs | | | | |
| 10 | Spirea 'Snowmound' | <i>Spirea nipponica 'Snowmound'</i> | #5 | cont | |
| 10 | Spirea 'Fritschiana' | <i>Spirea fritschiana</i> | #5 | cont | |
| 6 | Lilac 'Miss Kim' | <i>Syringa patula 'Miss Kim'</i> | #5 | cont | |
| 16 | Lilac 'Prairie Petite' | <i>Syringa vulgaris 'Prairie Petite'</i> | #5 | cont | |
| 29 | Shrub Rose 'Carefree Wonder' | <i>Rosa sp. 'Carefree Wonder'</i> | #5 | cont | |
| 6 | Shrub Rose 'Champlain' | <i>Rosa sp. 'Champlain'</i> | #5 | cont | |
| 15 | Shrub Rose 'High Voltage' | <i>Rosa sp. 'High Voltage'</i> | #5 | cont | |
| 37 | Evergreen Shrubs | | | | |
| 10 | Juniper 'Broadmoor' | <i>Juniperus sabinia 'Broadmoor'</i> | #5 | cont | |
| 9 | Juniper 'Grey Owl' | <i>Juniperus virginiana 'Grey Owl'</i> | #5 | cont | |
| 15 | Arborvitae 'Technite' | <i>Thuja occidentalis 'Technite'</i> | 4' hgt | cont | |
| 3 | Juniper 'Blue Star' | <i>Juniperus squamata 'Blue Star'</i> | #5 | cont | |
| 512 | Perennials/ Grasses | | | | |
| 7 | Blue Oat Grass 'Sapphire' | <i>Helictotrichon sempervirens 'Sapphire'</i> | #1 | cont | |
| 48 | Catmint 'Walkers Low' | <i>Nepeta subsessilis 'Walkers Low'</i> | #1 | cont | |
| 40 | Daylily 'Ice Carnival' | <i>Hemerocallis sp. 'Ice Carnival'</i> | #1 | cont | |
| 13 | Daylily 'Bella Lugosi' | <i>Hemerocallis sp. 'Bella Lugosi'</i> | #1 | cont | |
| 20 | Daylily 'Baja Red' | <i>Hemerocallis sp. 'Baja Red'</i> | #1 | cont | |
| 14 | Daylily 'Stella Doré' | <i>Hemerocallis sp. 'Stella Doré'</i> | #1 | cont | |
| 9 | Daylily 'Stella Doré' | <i>Hemerocallis 'Stella d'Or'</i> | #1 | cont | |
| 30 | Daylily 'South Seas' | <i>Hemerocallis sp. 'South Seas'</i> | #1 | cont | |
| 36 | Deschampsia Grass 'Schottland' | <i>Deschampsia caespitosa 'Schottland'</i> | #1 | cont | |
| 29 | Echinacea 'Mistral' | <i>Echinacea purpurea 'Mistral'</i> | #1 | cont | |
| 36 | Feather Reed Grass 'Karl Foerster' | <i>Calamagrostis acutiflora 'Karl Foerster'</i> | #1 | cont | |
| 28 | Gaillardia 'Burgundy Silk' | <i>Gaillardia sp. 'Burgundy Silk'</i> | #1 | cont | |
| 21 | Hosta 'Hadsphen Blue' | <i>Hosta sp. 'Hadsphen Blue'</i> | #1 | cont | |
| 28 | Little Bluestem 'Blue Heaven' | <i>Schizachyrium scoparium 'Blue Heaven'</i> | #1 | cont | |
| 23 | Miscanthus 'Flame' | <i>Miscanthus sinensis 'Flame'</i> | #1 | cont | |
| 20 | Prairie Dropseed | <i>Sporobolus heterolepis</i> | #1 | cont | |
| 13 | Rudbeckia 'Goldsturm' | <i>Rudbeckia fulgida 'Goldsturm'</i> | #1 | cont | |
| 29 | Sedum 'Purple Emperor' | <i>Sedum sp. 'Purple Emperor'</i> | #1 | cont | |
| 49 | Salvia 'May Night' | <i>Salvia nemorosa 'May Night'</i> | #1 | cont | |
| 19 | Tigerlily 'Tiny Ghost' | <i>Lilium sp. 'Tiny Ghost'</i> | #1 | cont | |
| | Vines | | | | |
| 2 | Boston Ivy | <i>Parthenocissus tricuspidata</i> | #1 | cont | |

6 PLANTING SCHEDULE
 NTS

9/30/16 Record Set

Horty Elving
 Planning Architecture Engineering Interior Design Construction Management Design Build
 505 East Grant Street, Minneapolis, MN 55404-1490
 T 612.332.4422 F 612.344.1282 hortyelving.com
 Horty Elving & Associates, Inc.



I hereby certify that this plan, specification, or report was prepared by me or under my direct supervision and that I am a duly Licensed Landscape Architect under the laws of the State of Minnesota.

Ben Erickson License No. 9822

| | | | |
|------------------------------------|------|------------------------------|------|
| APPROVED: SERVICE LINE DIRECTOR | DATE | APPROVED: INSPECTION CONTROL | DATE |
| APPROVED: GEMM COORDINATOR | DATE | APPROVED: PATIENT SAFETY | DATE |
| APPROVED: PROJECTS SECTION MANAGER | DATE | APPROVED: CHIEF OF POLICE | DATE |
| APPROVED: DIRECTOR PAB | DATE | APPROVED: SAFETY MANAGER | DATE |

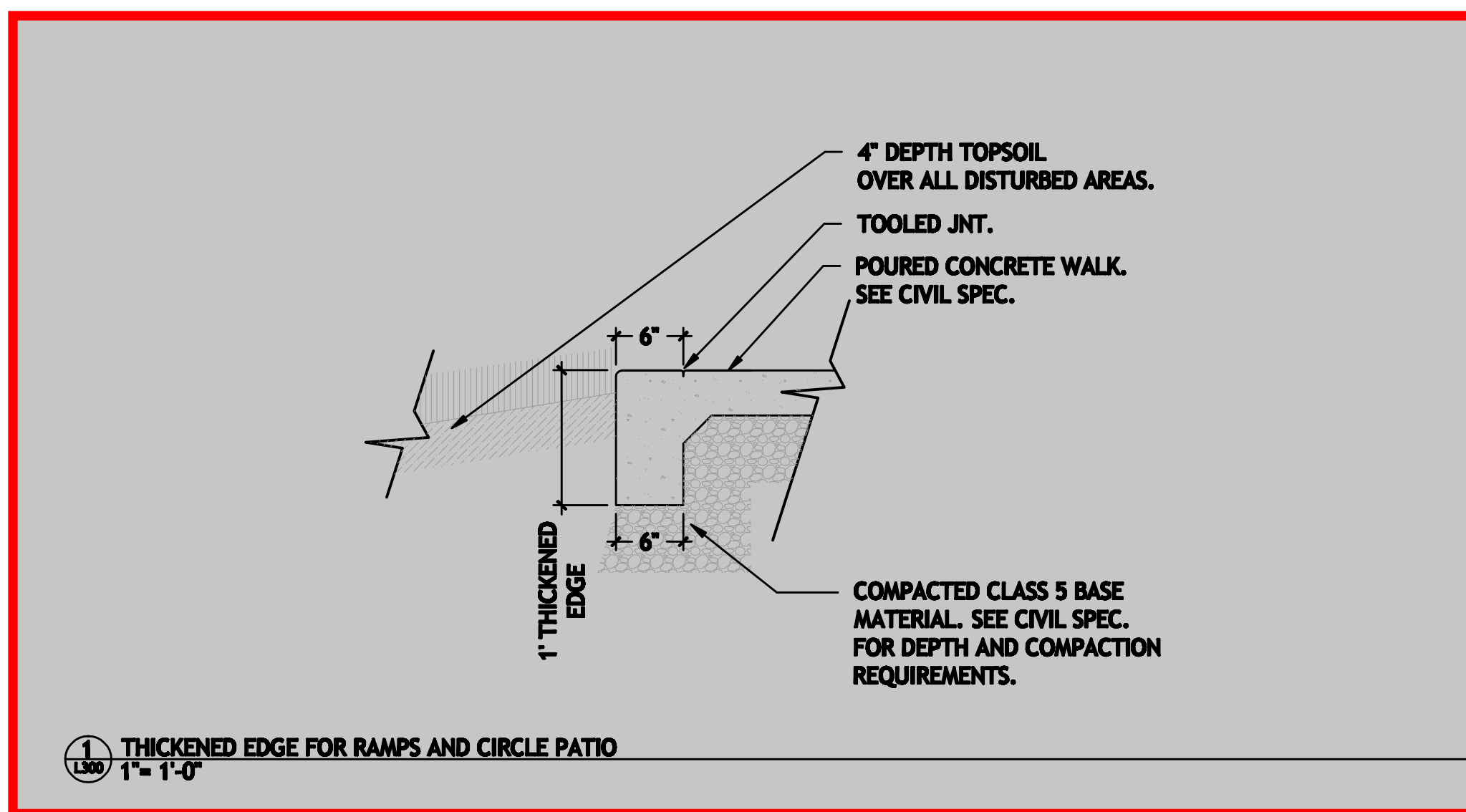
DRAWING TITLE
 LANDSCAPE DETAILS

APPROVED: CHIEF OF STAFF

PROJECT TITLE
 REHABILITATION CENTER
 PROJECT #666-332
 St. Cloud VA Health Care System

DATE: 01/22/2015
 DRAWING NO.: S1430
 DRAWING NO.: L200





NEW SCOPE

LITHOTEX® Pavecrafters® professional imprinting tools and embossing skins for authentic textures and realistic patterns

SCOFIELD SYSTEMS
www.scfield.com

ENGLISH YORKSTONE
RANDOM INTERLOCKING PATTERN
ORDER NUMBER: 404 A, B, C

Texture Description:
Surface texture is that of natural, fractured stone. Edges and corners are broken and rounded.

Pattern Description:
Pattern is formed of roughly rectangular stones in various sizes laid in a random manner. The sides of the stones vary from 2-1/2" (64 mm) to 23" (584 mm). Inside joints have the appearance of a smooth-grooved, raked joint, approximately 1/8" (3 mm) to 2" (51 mm) wide by approximately 3/8" (10 mm) deep. Outside edges have a surrounding joint, 1/8" (3 mm) to 1" (25 mm) wide, which matches the inside joints when tools are joined. The completed pattern is formed by use of three tools, A, B, and C, each with a different random arrangement of stones.

Also available:
Textured Skin Tool 1140
PROFESSIONAL GRADE TOOLS - P404
STANDARD GRADE TOOLS - S404
FLEXIBLE TOOLS - F404

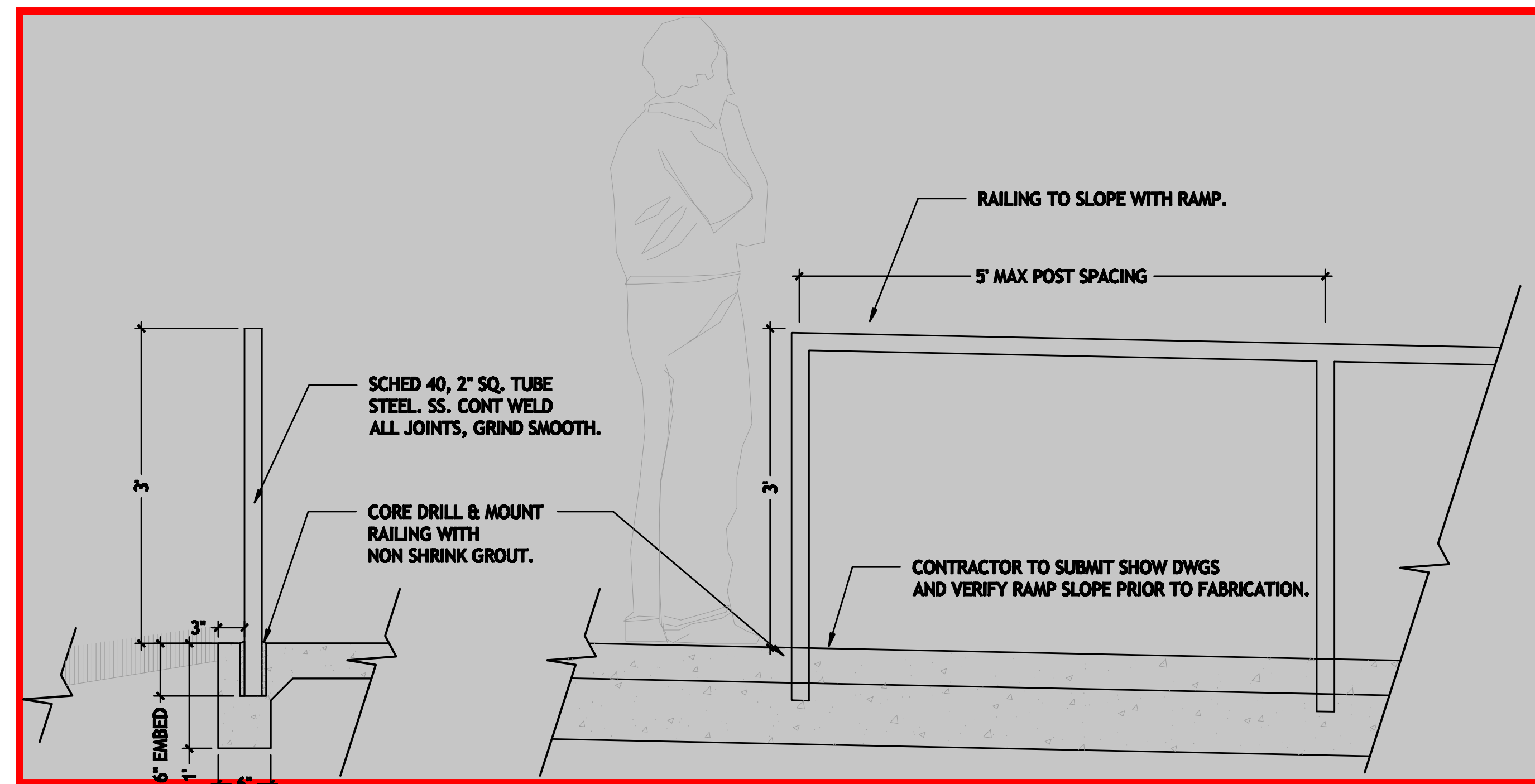
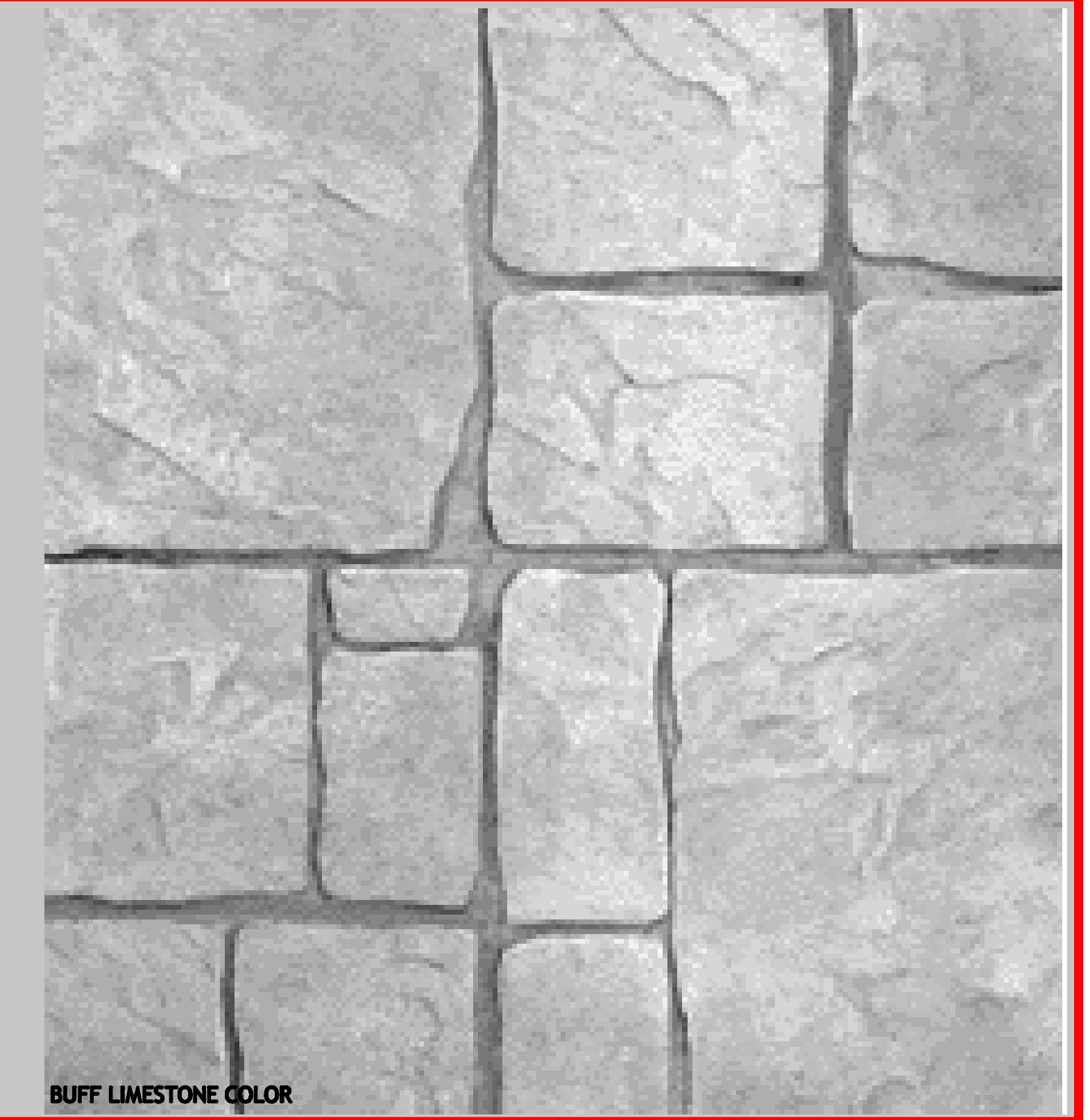
Patterns that exceed 32" in any dimension are not recommended for use in Standard Grade.

natural STONES

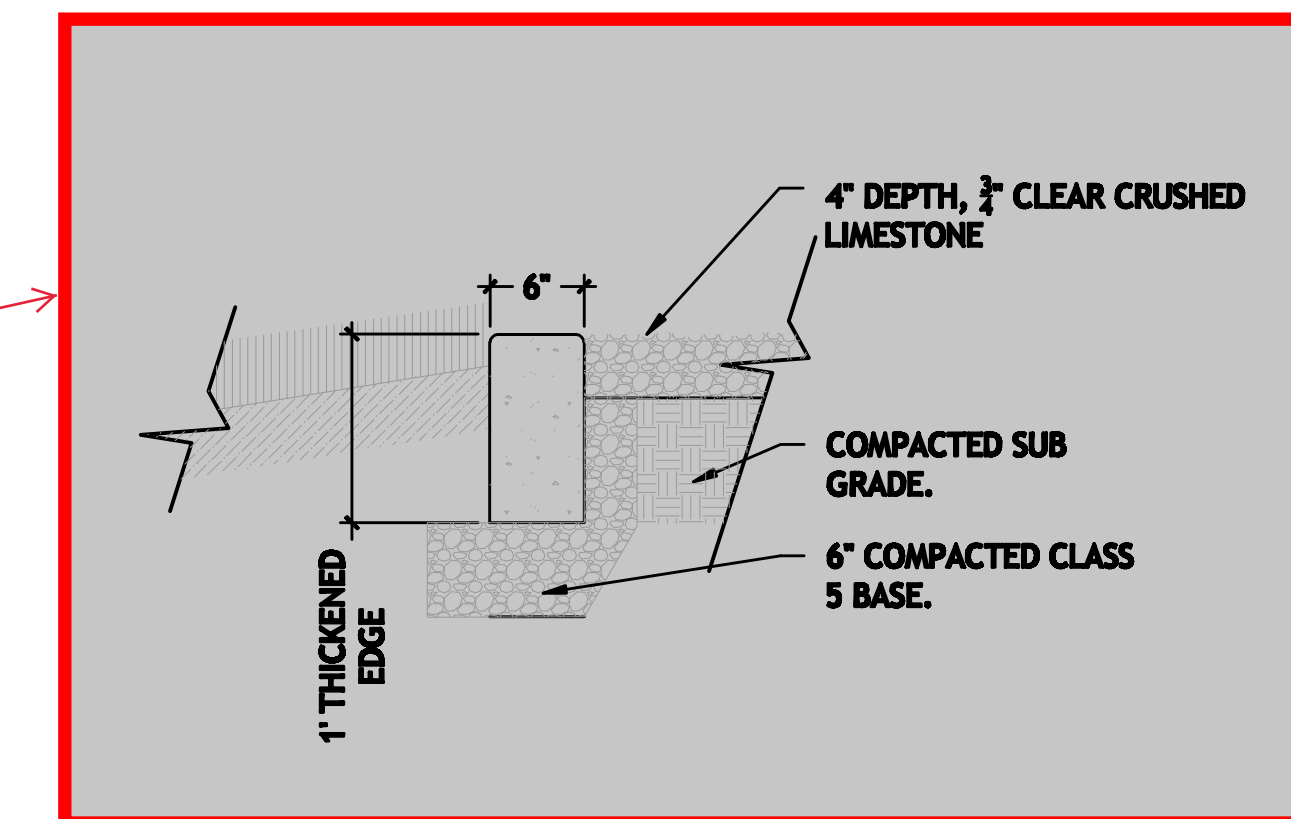
PATTERN SHEET D-404.01

FOR PROFESSIONAL USE ONLY
000117

This pattern sheet is meant as a reference only. Read the Scofield Tech-Data bulletin T-404 LITHOTEX Pavecrafters for additional information, layout suggestions, and installation instructions. Creating layouts for imprinted concrete requires skill and practice. Follow professional standards and practices, including those published by the American Concrete Institute (ACI).
© L. M. Scofield Company 2007. All rights reserved. LITHOTEX, LITHORANGE, SCOFIELD, CONCRETE, SCOFIELD SYSTEMS, and Pavecrafters are trademarks of L. M. Scofield Company.



NEW SCOPE



5. POURED CONCRETE BAND
1" = 1'-0"

Hyde Park™ Product Drawing landscapeforms.com
Bench, 59" Length, Rod Seat Insert
www.landscapeforms.com Ph: 800.521.2546

Drawing: HP182-01
Date: 07/06/2010
Dimensions are in Inches(mm)
U.S. Patent No. D366,775

BACK, ARMS & SEAT
5/8" SOLID ROD
1-1/4" DIA. TUBING
7/8" DIA. MOUNTING HOLES

21 1/4"
41 1/2"
59"
30 1/4"
32"
46 3/4"
17 1/2"
22 1/2"

CONFIDENTIAL DRAWING INFORMATION CONTAINED HEREIN IS THE PROPERTY OF LANDSCAPE FORMS, INC. INTENDED USE IS LIMITED TO DESIGN PROFESSIONALS SPECIFYING LANDSCAPE FORMS, INC. PRODUCTS AND THEIR DIRECT CLIENTS. DRAWING IS NOT TO BE COPIED OR DISCLOSED TO OTHERS WITHOUT THE CONSENT OF LANDSCAPE FORMS, INC. © 2010 LANDSCAPE FORMS, INC. ALL RIGHTS RESERVED.

NOTE: VERIFY BENCH TYPE WITH OWNER

3. HYDE PARK BENCH
1" = 1'-0"

