

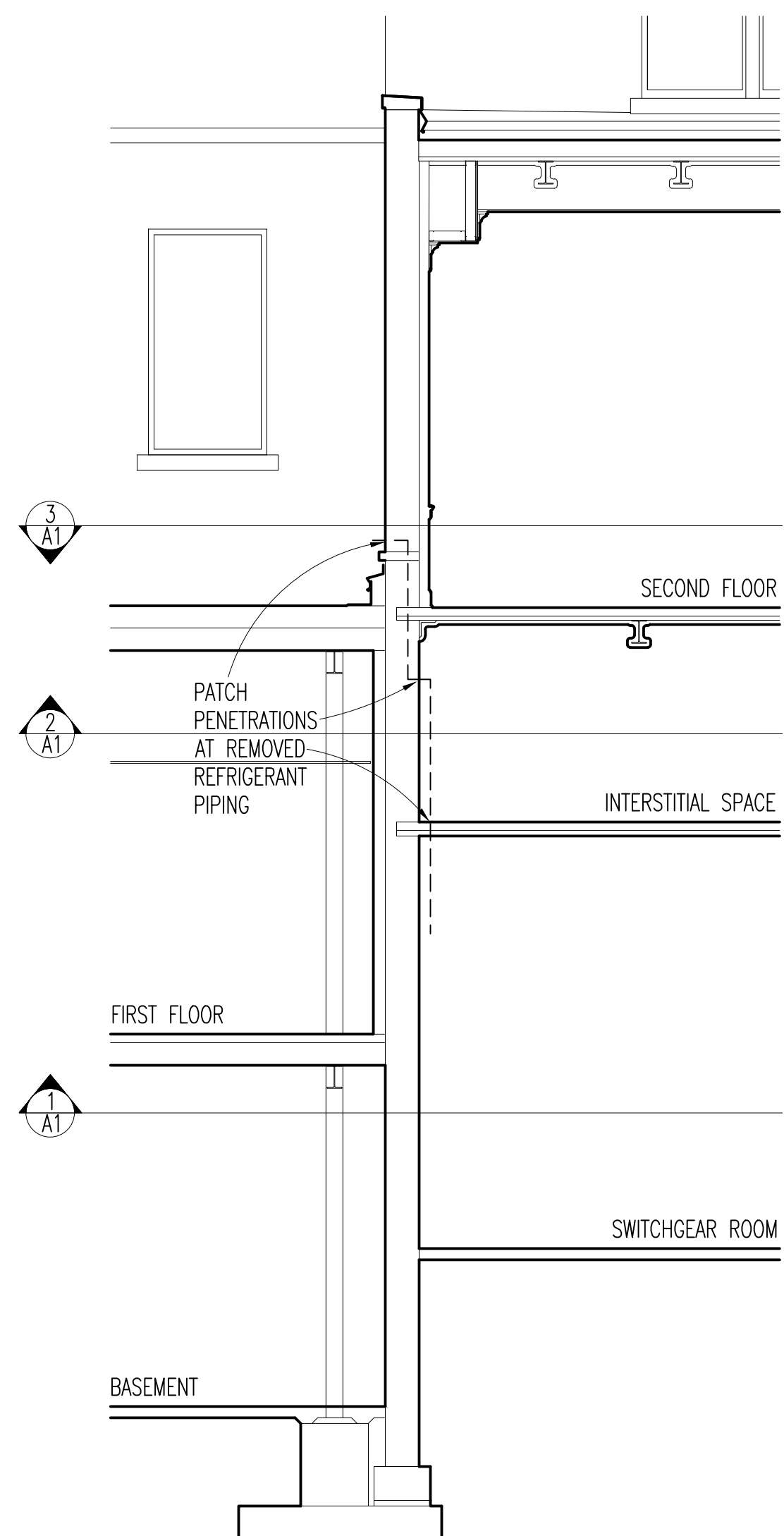
**BASEMENT REFLECTED CEILING DEMOLITION PLAN**  
1/8"=1'-0"

NOTE: MECHANICAL REMODELING SHOWN TO IDENTIFY WALL CUTTING LOCATIONS.

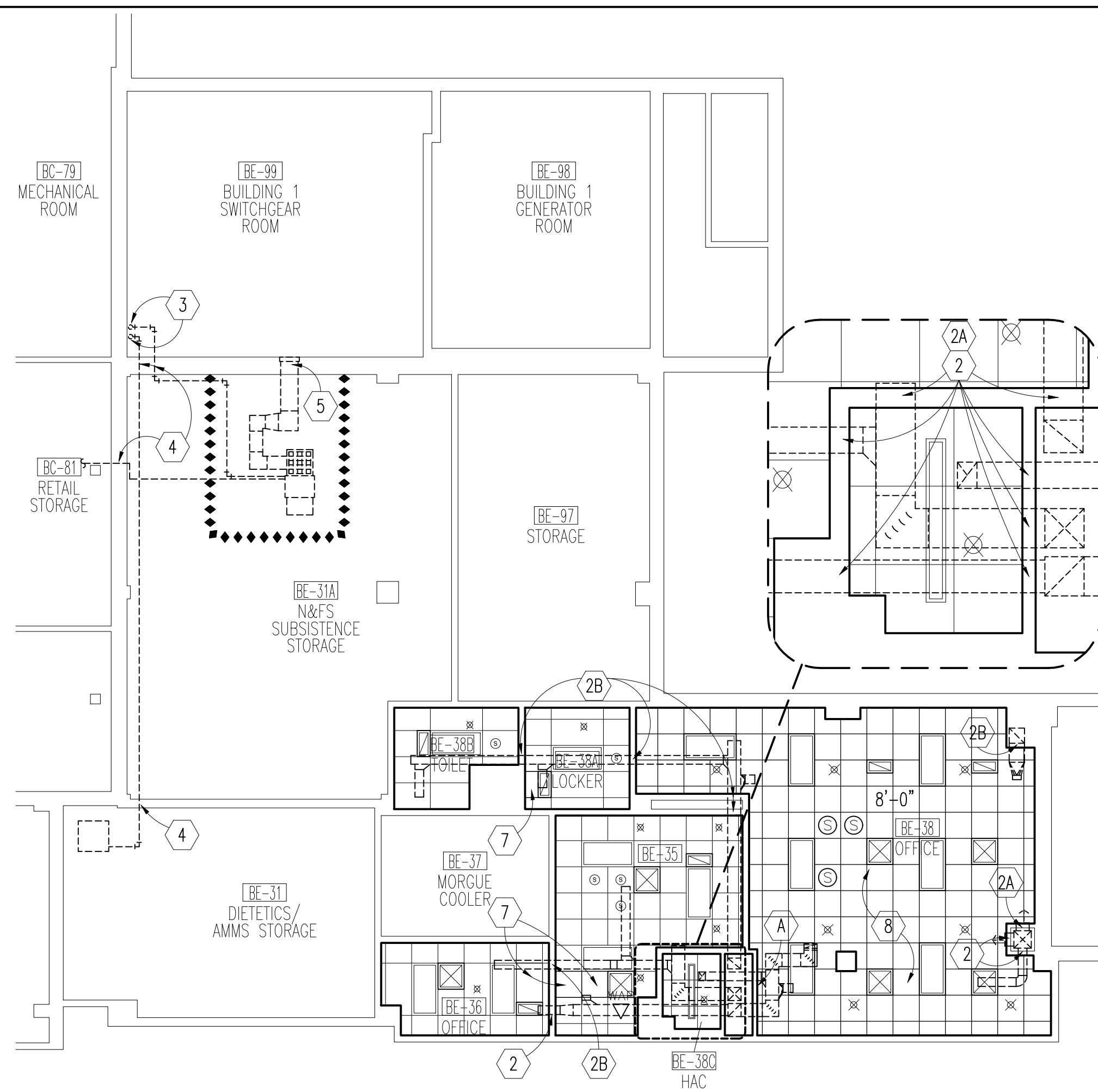
**ASBESTOS ABATEMENT NOTES**

- CONTRACTOR WILL ABATE ACM IN SPECIFIED AREA UTILIZING GLOVEBAG METHODOLOGY IN ACCORDANCE WITH O & M METHODS.

- 1 PIPE INSULATION
- 3 LINEAL FEET

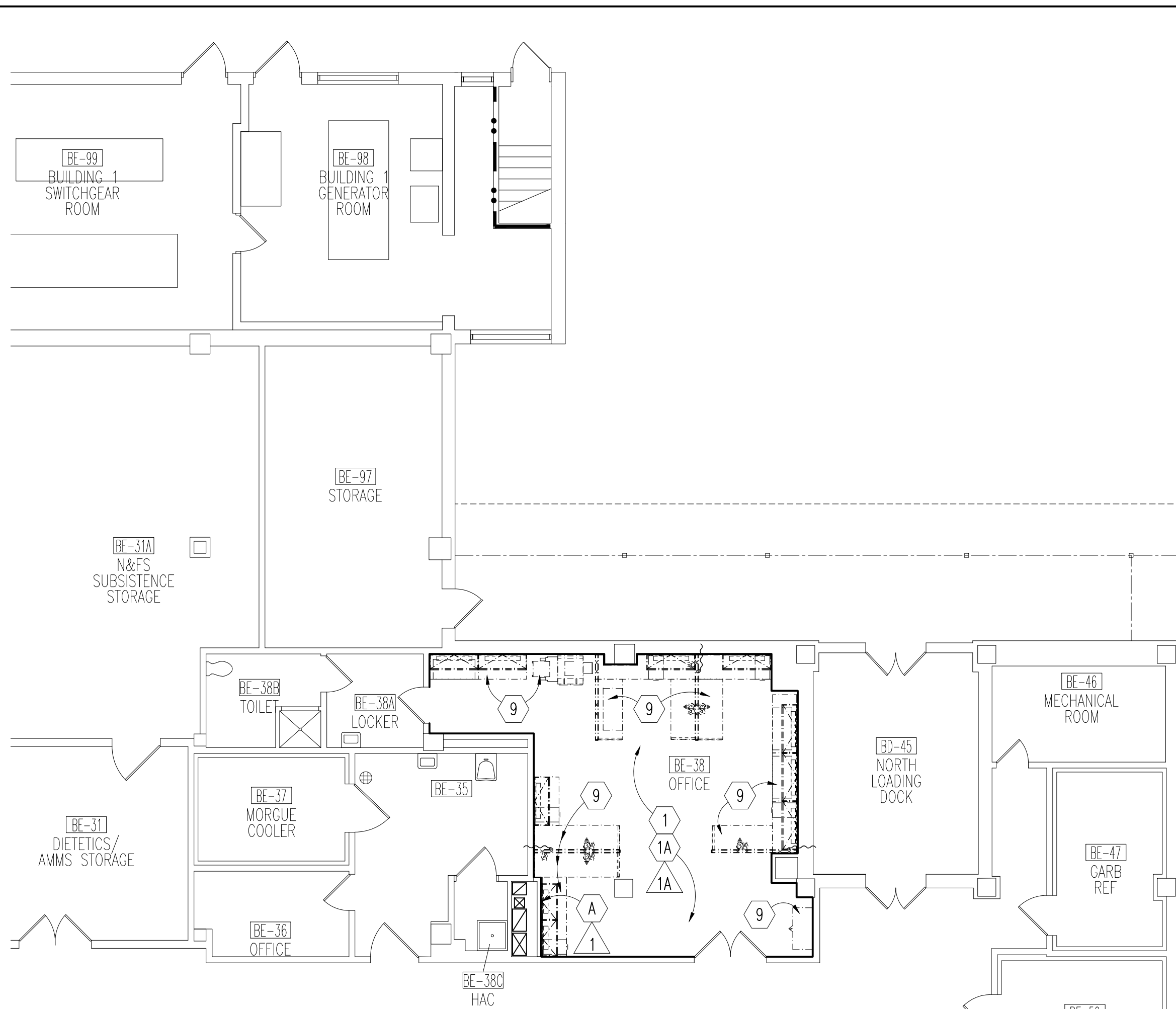


**PARTIAL BUILDING SECTION**  
1/4"=1'-0"

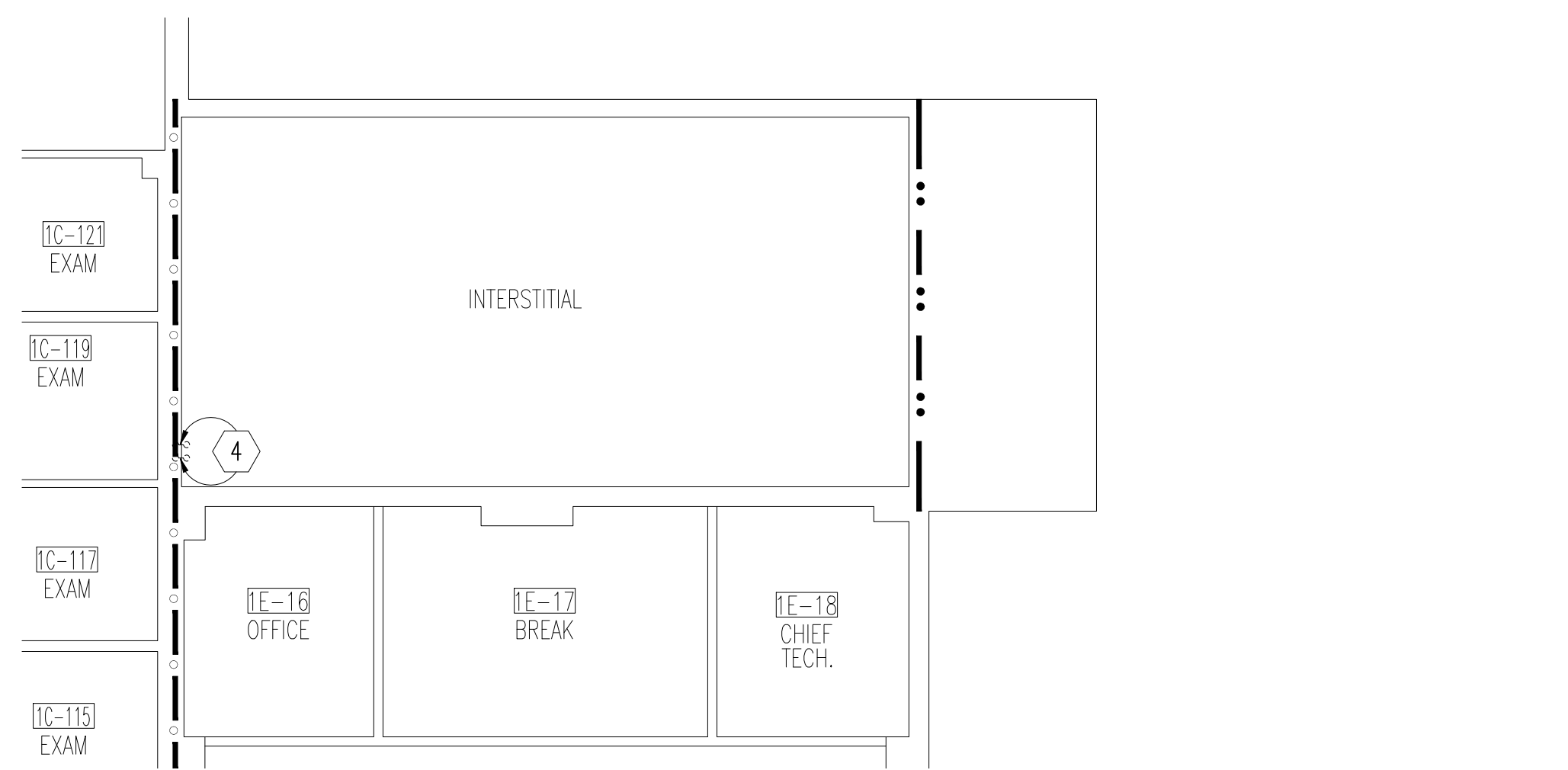


**BASEMENT REFLECTED CEILING REMODELING PLAN**  
1/8"=1'-0"

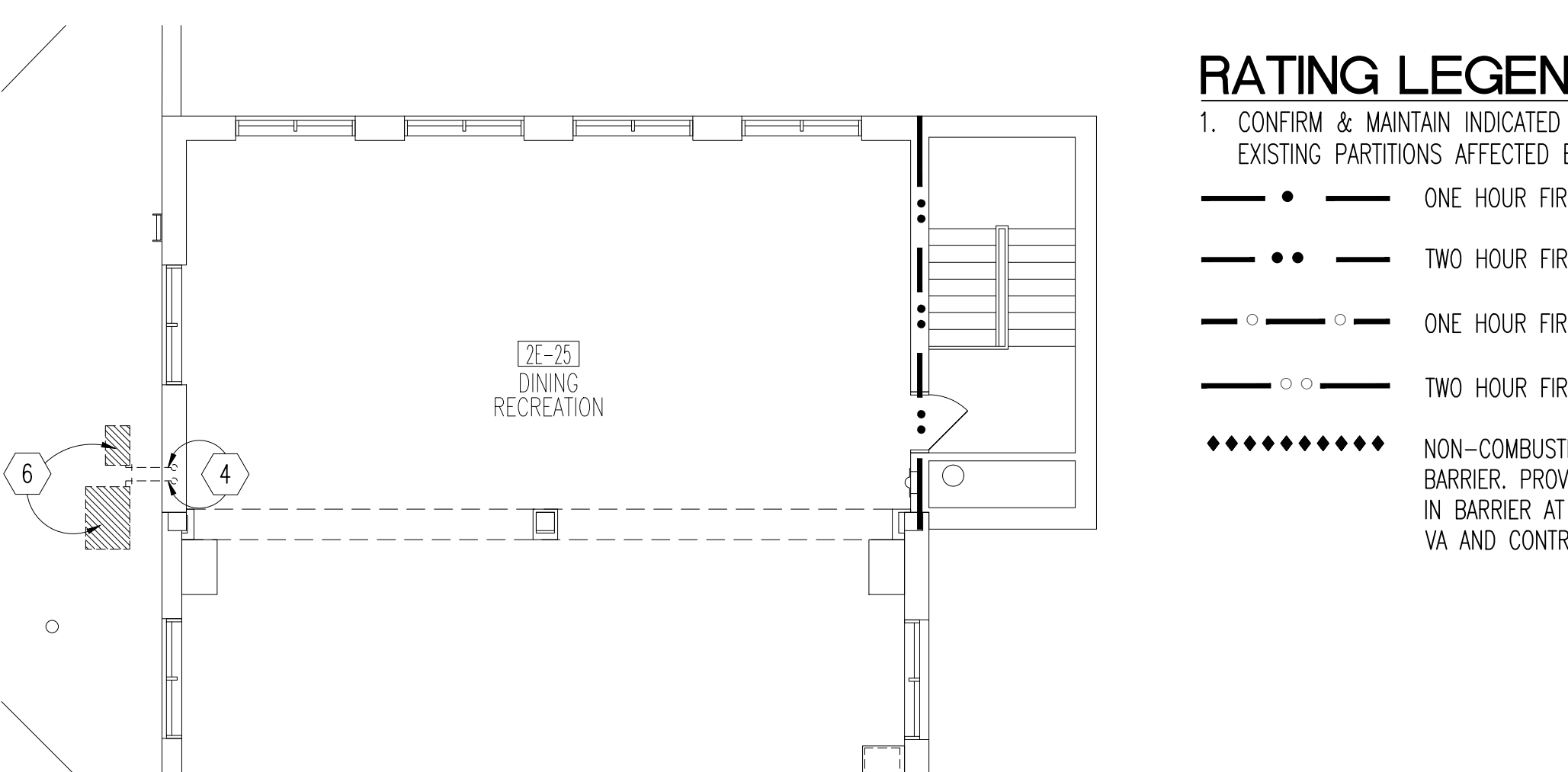
NOTE: MECHANICAL DEMOLITION SHOWN TO IDENTIFY WALL PATCHING LOCATIONS.



**BASEMENT DEMOLITION AND REMODELING PLAN**  
1/8"=1'-0"



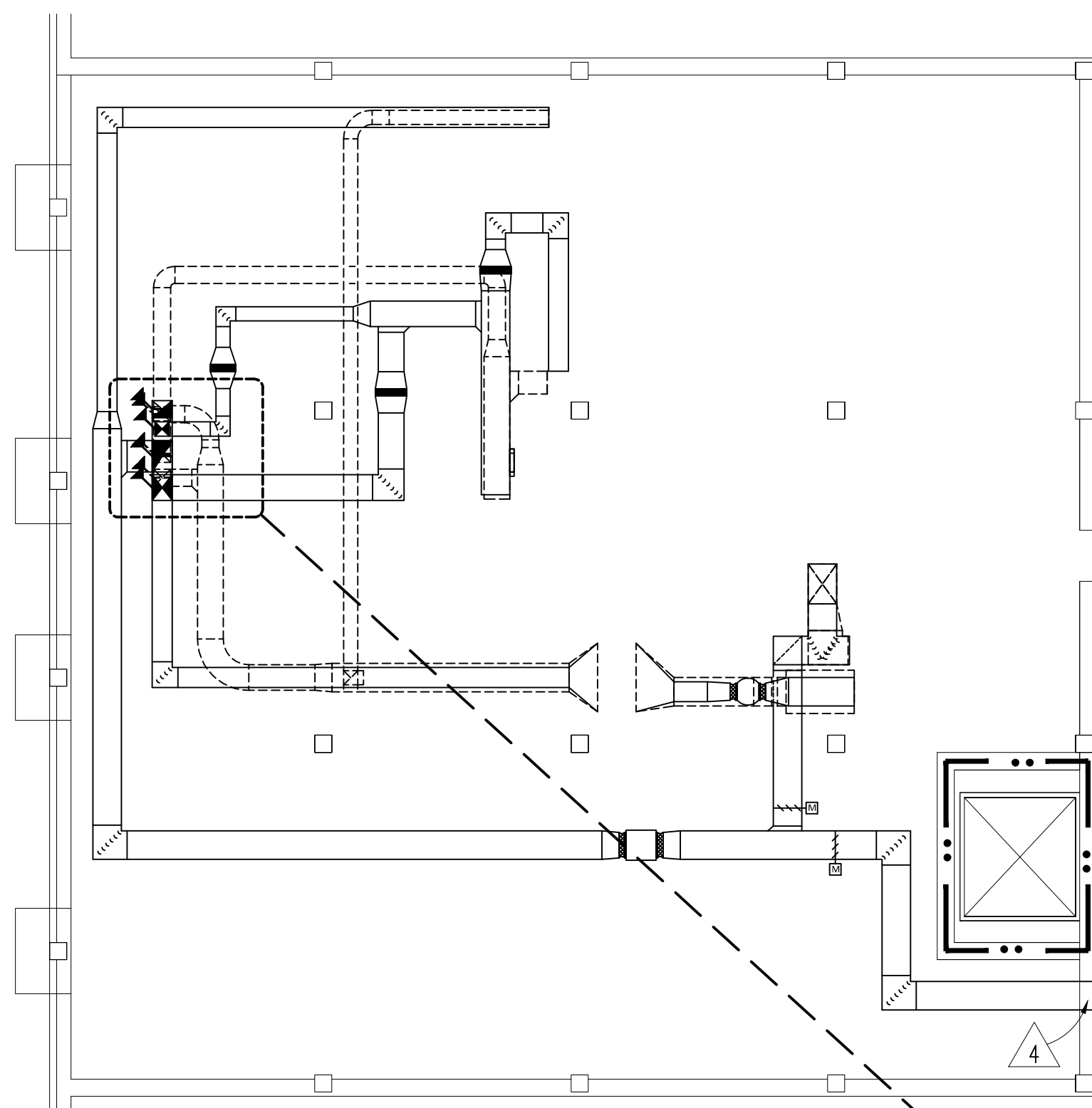
**FIRST FLOOR/INTERSTITIAL REFLECTED CEILING PLAN**  
1/8"=1'-0"



**FIRST FLOOR ROOF/SECOND FLOOR PLAN**  
1/8"=1'-0"

**RATING LEGEND**

- CONFIRM & MAINTAIN INDICATED RATING AT EXISTING PARTITIONS AFFECTED BY REMODELING.
- ONE HOUR FIRE
- TWO HOUR FIRE
- ONE HOUR FIRE/SMOKE
- TWO HOUR FIRE/SMOKE
- NON-COMBUSTIBLE TEMPORARY CONSTRUCTION BARRIER. PROVIDE CONSTRUCTION ACCESS DOORS IN BARRIER AT LOCATIONS TO BE DETERMINED BY VA AND CONTRACTOR.



**CRAWL SPACE PLAN**

1/8"=1'-0"  
NOTE: MECHANICAL DEMOLITION AND REMODELING SHOWN TO IDENTIFY CUTTING AND PATCHING LOCATIONS

**GENERAL NOTES**

- REFER TO MECHANICAL DRAWINGS FOR RELATED MECHANICAL WORK.
- REFER TO ELECTRICAL DRAWINGS FOR RELATED ELECTRICAL WORK.
- PATCH EXISTING FINISHES AS REQUIRED AT INTERSECTIONS OF NEW AND EXISTING FINISHES.
- PATCH TO MATCH SPRAY-ON FIREPROOFING DAMAGED OR REMOVED FROM STRUCTURAL MEMBERS DURING REMODELING.
- PATCH ABANDONED PARTITION AND FURRING OPENINGS AND PENETRATIONS RELATED TO ELECTRICAL DEMOLITION.
- PROTECT SURROUNDING ROOMS NOT UNDER CONSTRUCTION FROM DUST/DEBRIS. THESE ROOMS ARE NOT TO BE USED BY ANY CONTRACTOR FOR ANY PURPOSE.
- MAINTAIN ACCESS TO ALL EXITS DURING CONSTRUCTION.
- WORK TIME RESTRICTIONS:
  - WORK WILL BE SHUT DOWN AS REQUIRED FOR STAFF/PATIENT NEEDS OR NOISE ISSUES.
  - CORRIDORS TO REMAIN OPEN AT ALL TIMES AND SHOULD BE SCHEDULED AFTER BUSINESS HOURS/ON WEEKENDS, AND SHOULD BE SUBDIVIDED TO MAINTAIN CIRCULATION.
  - CORRIDOR ACCESS TO ROOMS MUST BE MAINTAINED AT ALL TIMES (EXCEPT POSSIBLY OUTSIDE BUSINESS HOURS WHEN WORK COULD BE COORDINATED AND COMPLETED).
  - WORK MUST BE COORDINATED WITH THE IMMEDIATE REINSTALLATION OF FINISHES SO CORRIDORS DO NOT REMAIN IN AN UNFINISHED STATE.
- MAINTAIN NEGATIVE AIR PRESSURE IN AREAS OF WORK DURING WORK.

**DEMOLITION NOTES LEGEND**

- DEMOLITION AS INDICATED
- REMOVE PARTITION AS INDICATED.
- REMOVE EXISTING V.C.T. FLOORING AND WALL BASE.
- CUT GWB PARTITION FOR INSTALLATION OF NEW MECHANICAL PIPING AND DUCTWORK.
- INCREASE EXISTING DUCT OPENING SIZE(S)
- REUSE EXISTING DUCT OPENING.
- SAW-CUT EXISTING DECK ABOVE AT EXISTING DUCT PENETRATIONS AS REQUIRED FOR INSTALLATION OF NEW, LARGER DUCTS.
- SAW-CUT EXISTING CONCRETE WALL FOR INSTALLATION OF NEW DUCT, GRILLE, OR LOUVER.
- SAW-CUT EXISTING CMU WALL FOR INSTALLATION OF NEW DUCT, GRILLE, OR LOUVER.
- REMOVE CEILING GRID AND TILE.
- REMOVE AND REINSTALL CEILING TILE AND FIXTURES FOR INSTALLATION OF NEW MECHANICAL PIPING AND DUCTWORK.
- REMOVE OR CUT CEILING TILE FOR INSTALLATION OF NEW GRILLE.

**REMODELING NOTES LEGEND**

- PATCH TO MATCH EXISTING GWB FINISH AS REQUIRED BY MECHANICAL OR ELECTRICAL WORK; PAINT WALLS.
- FURNISH AND INSTALL NEW CARPET AND WALL BASE.
- PATCH TO MATCH EXISTING GWB PARTITION AT REMOVED MECHANICAL PIPING, DUCTWORK OR GRILLE.
- INCREASE EXISTING DUCT OPENING SIZE(S)
- REUSE EXISTING DUCT OPENING.
- PATCH EXISTING DECK ABOVE AT REMOVED MECHANICAL PIPING.
- PATCH EXISTING CONCRETE OR MASONRY WALL (INCLUDING ANY INTERIOR FURRING) AT REMOVED MECHANICAL PIPING.
- INFILL EXISTING CONCRETE/MASONRY WALL AT REMOVED LOUVER.
- PATCH TO MATCH EXISTING ROOFING AND INSULATION AT REMOVED CONDENSING UNITS AND ALL ASSOCIATED ITEMS.
- NEW ACOUSTICAL TILE TO MATCH EXISTING.
- NEW SUSPENDED ACOUSTICAL TILE AND GRID CEILING.
- OWNER-FURNISHED AND INSTALLED FURNITURE AND EQUIPMENT.

**PARTITION TYPE LEGEND**

- PROVIDE FIRE/SMOKE SEAL (PERIMETER & PENETRATIONS) AT CORRIDOR WALLS.
- PROVIDE ACOUSTICAL SEAL AT INTERSECTION WITH DECK OR WALLS, AND DUCT, PIPE & CONDUIT PENETRATIONS, TYPICAL.
- CHASE OR FURRED WALL, 5/8" TYPE "X" GWB ON EXPOSED FACE OF 3-5/8" METAL STUDS AT 16" O.C., WITH FULL THICKNESS ROCK WOOL SOUND ATTENUATION/ INSULATION IN CAVITY. EXTEND TO UNDERSIDE OF DECK OR GWB SOFFIT ABOVE.

**CEILING SYMBOLS LEGEND**

- CEILING DEMOLITION AS INDICATED
- 2'-0" x 2'-0" CEILING GRID
- 2'-0" x 4'-0" CEILING GRID
- RECESSED FLUORESCENT LIGHT FIXTURE
- SPRINKLER
- SPEAKER
- WAP: WIRELESS ACCESS POINT; SEE ELEC. FOR IDENTIFICATION OF FACILITY VERSUS PATIENT DEVICES.
- EXIT
- SUPPLY GRILLE, CEILING DIFFUSER
- RETURN AIR GRILLE

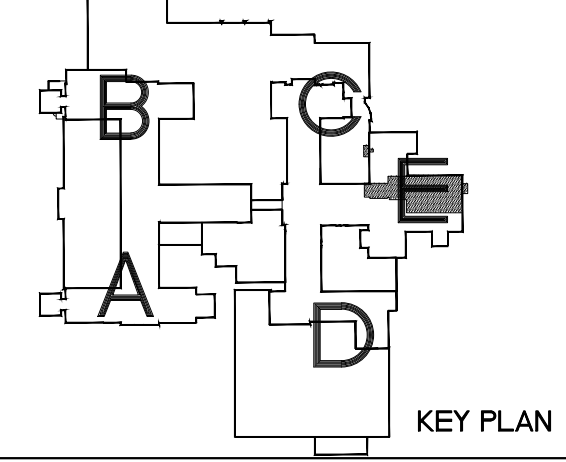
Dept. of Veterans Affairs  
Health Care System  
2101 Elm Street North  
Fargo, ND 58102

JPK ENGINEERING, LLC  
112 N. Univ. Dr.  
Suite 140  
Fargo, ND 58102  
(701) 866-8816

MECHANICAL, ELECTRICAL, CIVIL  
503 7th St N, SUITE 200  
FARGO, ND 58102  
PHONE: 701.478.0238  
FAX: 701.478.0240

IMAGE GROUP INC.  
403 CENTER AVENUE, SUITE 300  
MOORHEAD, MN 56560

I hereby certify that this plan specification, or report was prepared by me or under my direct supervision, and that I am duly Registered Architect under the laws of the State of North Dakota.  
*Russell Murray*  
Date 09/15/2017 Reg. No. 378



Drawing Title <b>CRAWL SPACE, BASEMENT, FIRST, AND SECOND FLOOR PLANS</b>		Project Title <b>UPGRADE BASEMENT DRY GOODS AIR CONDITIONING</b>		Date <b>SEPTEMBER 15, 2017</b>
VA Project No. <b>437-16-210</b>	Contract No. <b>437-R75521</b>	Designed By <b>RM</b>	Checked By <b>RM</b>	Drawn By <b>AH</b>
Building No. <b>1</b>	Autocad File Name <b>Plans.dwg</b>	Location <b>FARGO VA HEALTH CARE SYSTEM FARGO, ND</b>	Drawing No. <b>A1</b>	Dwg 2 of 9

U:\Saver Project Data\1707\_Fargo\_VA\_Upgrade\_Basement\_Dry\_Goods\_Air\_Conditioning\Drawings\_Sep\_14\_2017 - 12:34pm

