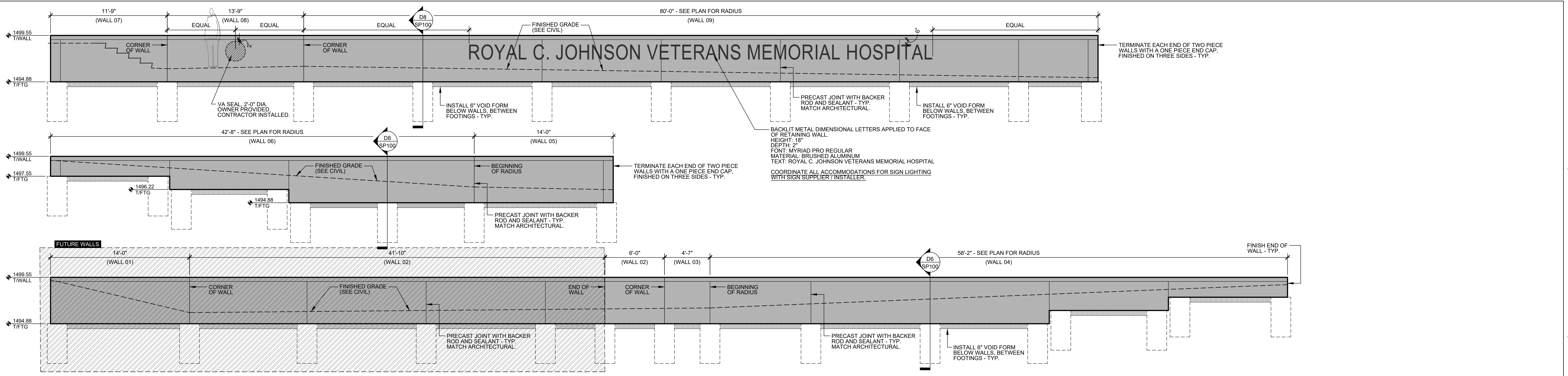
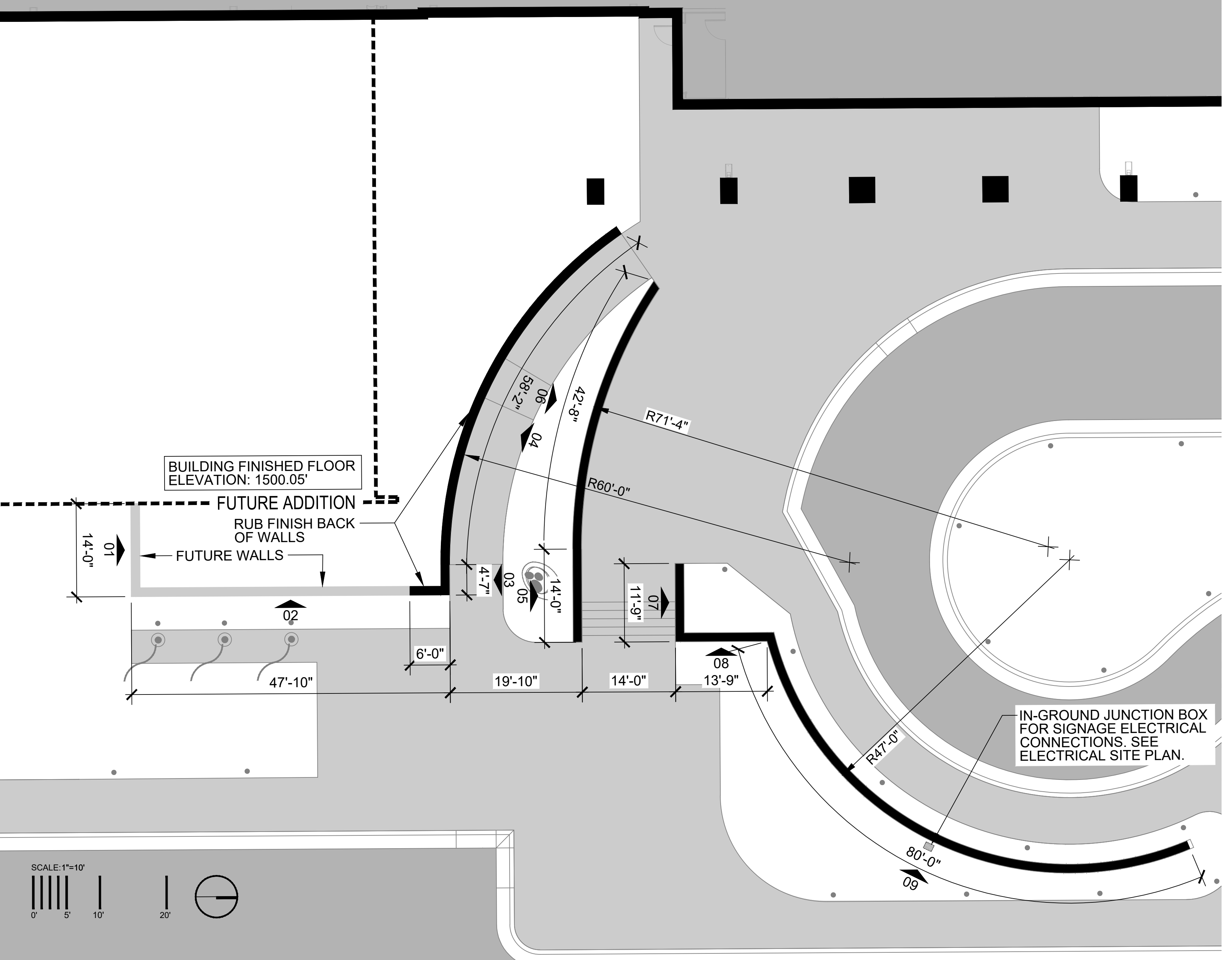


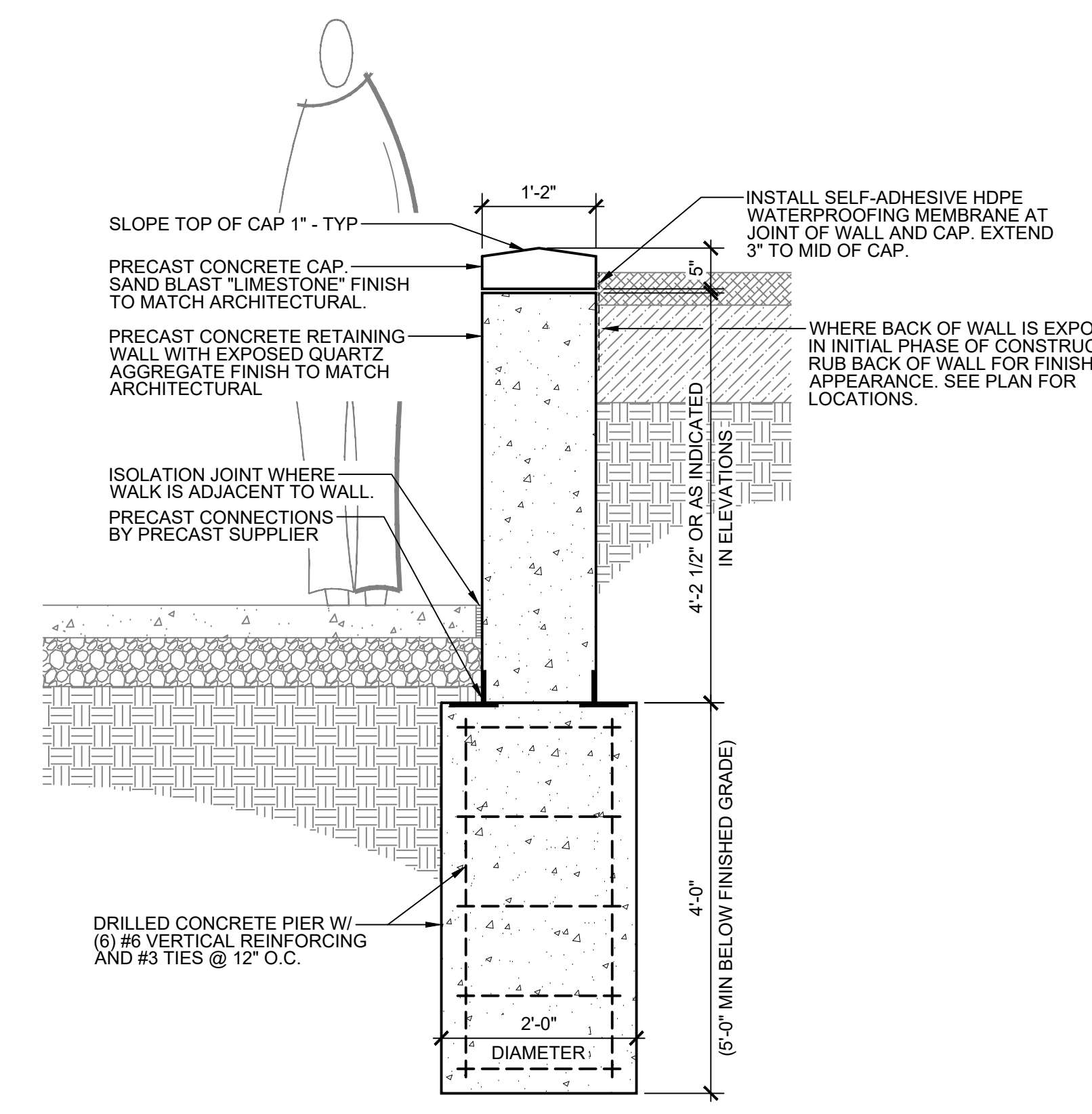
ROYAL C. JOHNSON VETERANS MEMORIAL HOSPITAL



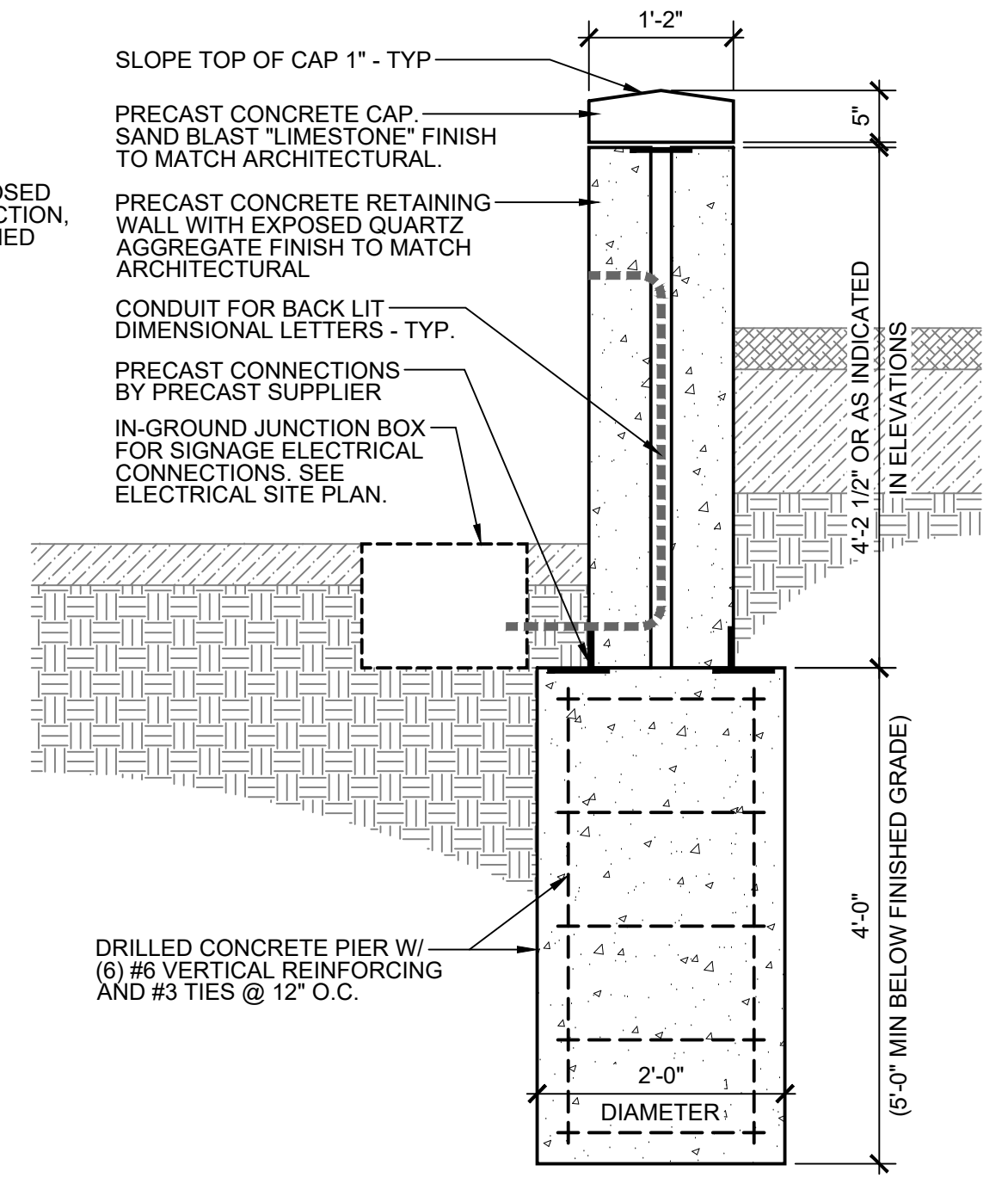
B1 SP100 ELEVATION: PRECAST ENTRY WALLS SCALE: 1" = 10'-0"



A1 SP100 PLAN: PRECAST ENTRY WALL LAYOUT SCALE: 1" = 10'-0"



D6 SP100 SECTION: PRECAST ENTRY WALL (ONE PIECE) SCALE: 3/4" = 1'-0"



D8 SP100 SECTION: PRECAST ENTRY WALL (TWO PIECE) SCALE: 3/4" = 1'-0"

Revision#	Description	Date:

CONSULTANTS

ARCHITECTURAL: **BWB** BWR 390 St. Peter St Suite 600 St. Paul, MN 55102 Phone: 651-222-3701

STRUCTURAL: **ERA** ERICHSEN ROAD ASSOCIATES 2520 University Ave W Suite 423-S St. Paul, MN 55402 Phone: 651-251-1701

MEP: **DUNHAM** DUNHAM ASSOCIATES, INC. 51 South Sixth St Suite 1100 Minneapolis, MN 55402 Phone: 612-465-7550

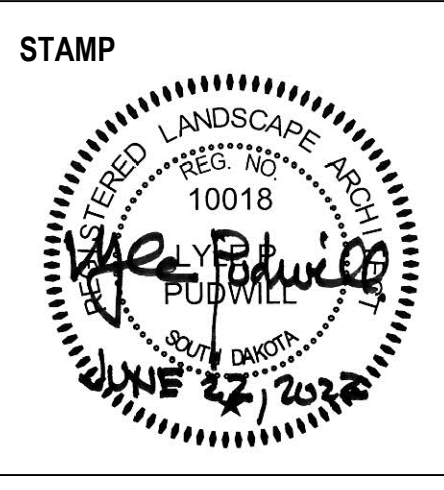
CIVIL: **EVS** 10025 Valley View Rd Suite 140 Eden Prairie, MN 55344 Phone: 952-945-0236

LANDSCAPE ARCHITECTURE: **CONFLUENCE** 440 E. 9th Street Suite 121 Sioux Falls, SD 57103 Phone: 605-339-1205

ARCHITECT OF RECORD

A/E: **Stone Group Architects** 600 E 7th Street Sioux Falls, SD 57103 605-271-1144

STONE GROUP ARCHITECTS



Office of Construction and Facilities Management

VA U.S. Department of Veterans Affairs

Drawing Title: **SITE DETAILS**

Approved: _____

Phase: **CONSTRUCTION DOCUMENTS**

FOR OFFICIAL USE ONLY

Project Title: **NEW FRONT LOBBY AND PRIMARY CARE ADDITION**

Location: **SIoux FALLS, SOUTH DAKOTA**

Issue Date: 06/22/2022

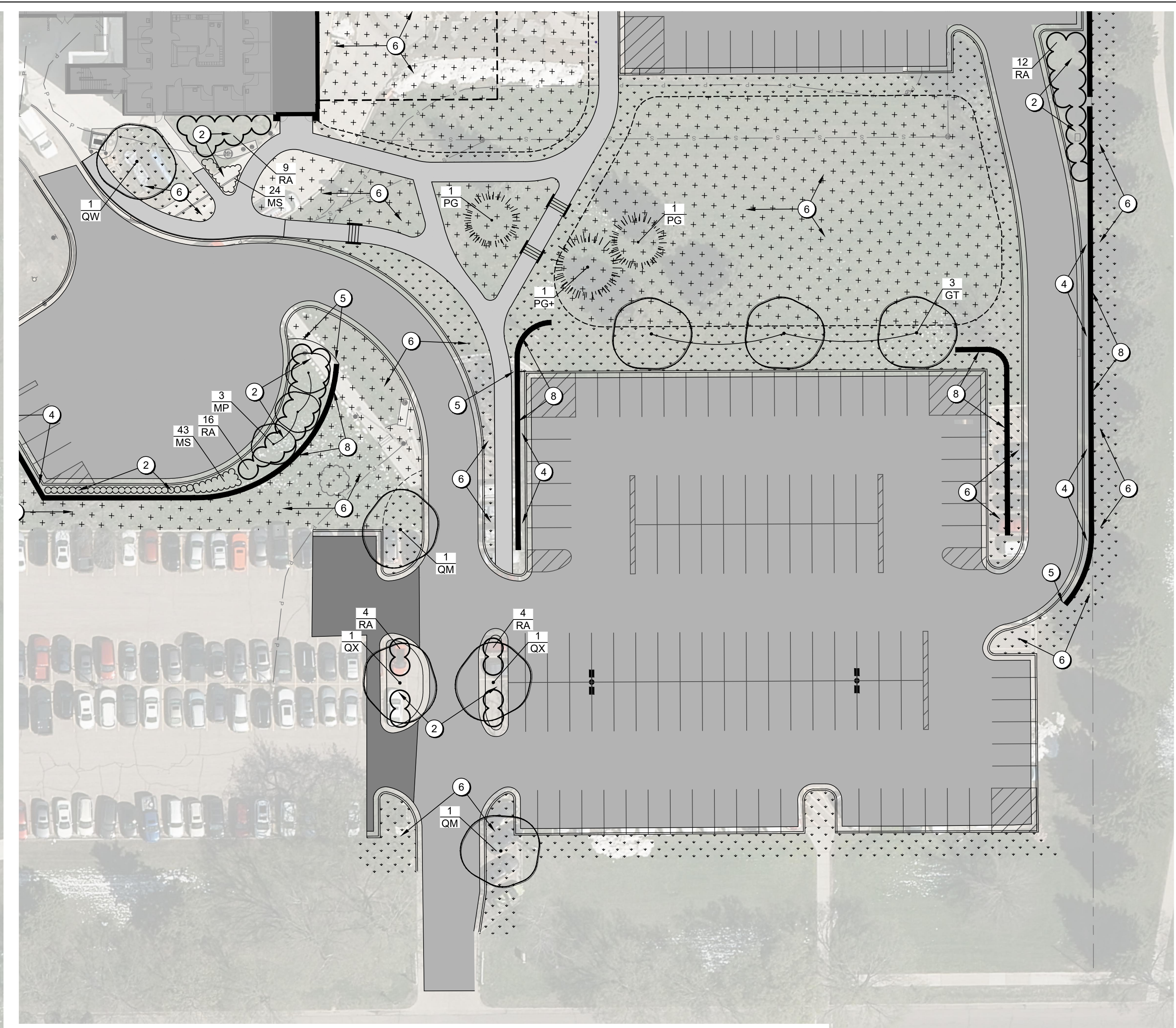
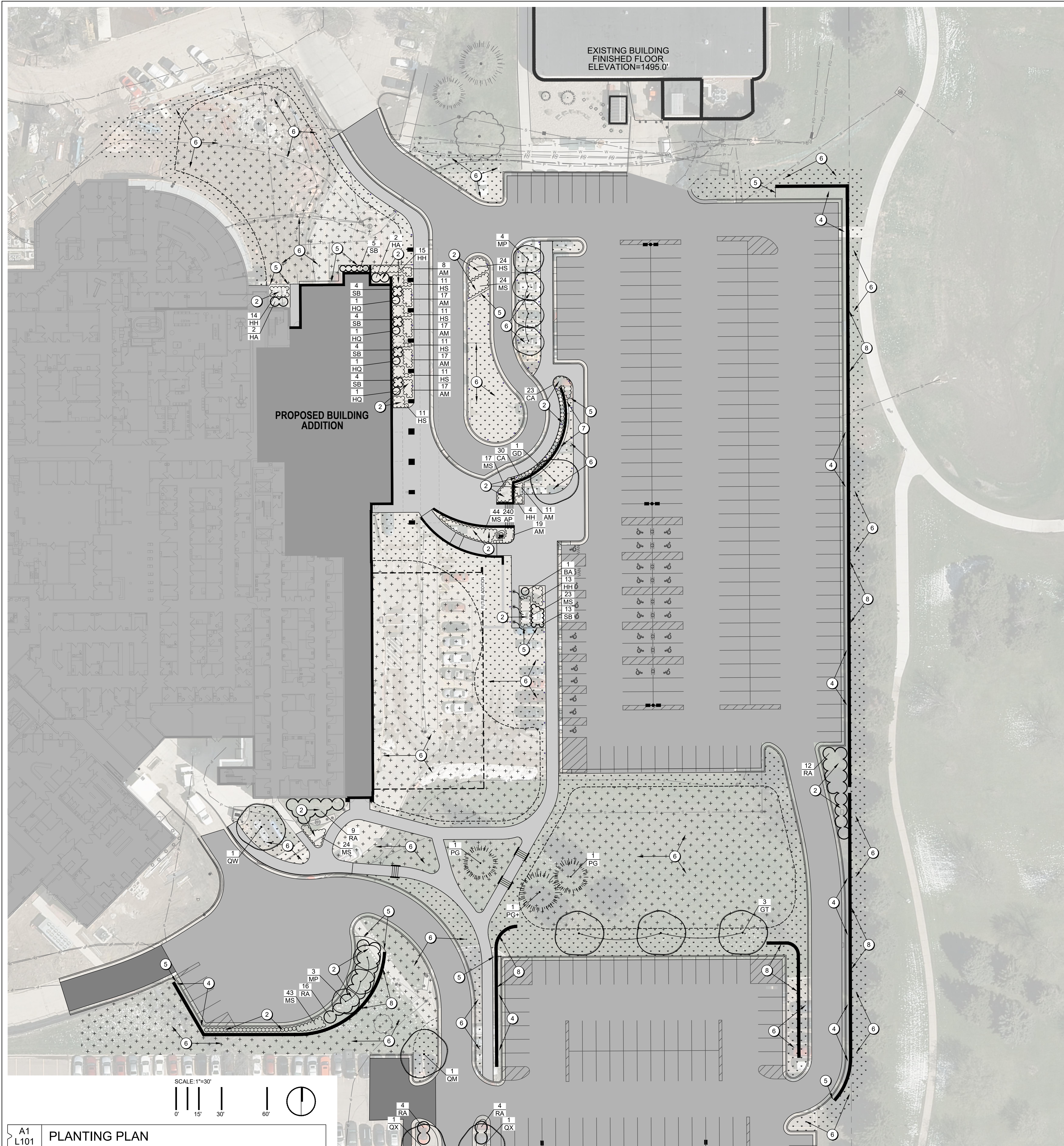
Checked: LP

Drawn: LP

Project Number: VA #438-480 SGA #201909

Building Number: 5

Drawing Number: **SP100**



**B1
L101 PLANTING PLAN**

SEEDING HATCH KEY

	SEED MIX 01 BASE BID: IRRIGATED TURFGRASS MIX ALTERNATE: NON-IRRIGATED TURFGRASS MIX
	SEED MIX 02 BASE BID: IRRIGATED TURFGRASS MIX ALTERNATE: NATIVE GRASS MIX

GENERAL NOTES

THE CONTRACTOR SHALL BE RESPONSIBLE FOR LOCATING ALL PUBLIC AND PRIVATE UTILITIES WHICH LIE WITHIN THE CONSTRUCTION AREA PRIOR TO ANY CONSTRUCTION. NOTIFY THE ARCHITECT OF ANY DISCREPANCIES. SOUTH DAKOTA ONE CALL NOTIFICATION CENTER: 1-800-781-7474.

THE CONTRACTOR SHALL CONSTRUCT ALL ITEMS WITHIN THIS CONTRACT IN ACCORDANCE WITH ALL STATE AND LOCAL CODES AND REGULATIONS. CONTRACTOR TO COORDINATE ALL WORK WITHIN THE PUBLIC RIGHT OF WAY OR STREETS WITH THE APPROPRIATE JURISDICTIONS.

THE CONTRACTOR SHALL REPORT TO THE OWNER ANY DAMAGE TO OWNER'S PROPERTY AND UTILITIES PRIOR TO REPAIR.

ALL WORK SHALL BE IN ACCORDANCE WITH OSHA CODES AND STANDARDS. NOTHING INDICATED ON THESE DRAWINGS SHALL RELIEVE THE CONTRACTOR FROM COMPLYING WITH ANY APPROPRIATE SAFETY REGULATIONS.

LANDSCAPE CONTRACTOR TO MARK ALL TREE LOCATIONS AND LAY OUT ALL PLANT MATERIAL IN THE FIELD FOR APPROVAL BY THE LANDSCAPE ARCHITECT PRIOR TO PLANTING. UNLESS APPROVED OTHERWISE SHRUBS ARE NOT TO BE LOCATED CLOSER THAN 3'-0" TO CURB OR WALKS.

KEYNOTES

- B&B TREE - TYP. B1/L501
- PLANT BED (ROCK MULCH). PREPARE PLANTING SOILS AND MULCH, AS SPECIFIED. A1/L501
- PLANT BED (ORGANIC MULCH). PREPARE PLANTING SOILS AND MULCH, AS SPECIFIED. A2/L501
- ROCK MULCH AND WEED BARRIER FABRIC, AS SPECIFIED, BETWEEN RETAINING WALL AND BACK OF CURB. SIMILAR TO A1/L501
- LANDSCAPE EDGING, AS SPECIFIED. A1/L501
- TILL, FERTILIZE, FINE GRADE, SEED AND HYDROMULCH, AS SPECIFIED. LANDSCAPE CONTRACTOR IS RESPONSIBLE FOR SEEDING ALL AREAS DISTURBED BY CONSTRUCTION.
- CONCRETE MOW EDGE. A4/L501
- RETAINING WALL. SEE CIVIL SHEETS.

PLANT SCHEDULE

KEY	QTY	BOTANICAL NAME	COMMON NAME	SIZE	COND	SPACING/REMARKS
CANOPY TREES						
GD	1	<i>Gymnocladus dioica</i> 'Espresso'	ESPRESSO KENTUCKY COFFEETREE	2-1/2" CAL	B&B	
GT	3	<i>Gleditsia triacanthos</i> var. <i>inermis</i> 'Harve'	NORTHERN ACCLAIM HONEYLOCUST	2-1/2" CAL	B&B	
QM	2	<i>Quercus macrocarpa</i>	BUR OAK	2-1/2" CAL	B&B	
QW	1	<i>Quercus x warei</i> 'Long'	REGAL PRINCE OAK	2-1/2" CAL	B&B	
QX	2	<i>Quercus x macdanielli</i> 'Clomons'	HERITAGE OAK	2-1/2" CAL	B&B	
ORNAMENTAL TREES						
MP	7	<i>Malus x 'Prainfire'</i>	PRAIRIFIRE CRABAPPLE	2" CAL	B&B	
EVERGREEN TREES						
PG+	1	<i>Picea glauca</i> 'Densata'	BLACK HILLS SPRUCE	8' HT.	B&B	
PG	2	<i>Picea glauca</i> 'Densata'	BLACK HILLS SPRUCE	6' HT.	B&B	
DECIDUOUS SHRUBS						
HA	4	<i>Hydrangea arborescens</i> 'Annabelle'	ANNABELLE HYDRANGEA	#2	CONT.	5'-0" O.C.
HQ	4	<i>Hydrangea paniculata</i> 'Quickfire'	QUICKFIRE HYDRANGEA	#2	CONT.	5'-0" O.C.
RA	45	<i>Rhus aromatica</i> 'Gro-Low'	REGAL PRINCE SUMAC	#2	CONT.	4'-6" O.C.
SB	34	<i>Spiraea betulifolia</i> 'Tor'	TOR BIRCHLEAF SPIREA	#1	CONT.	2'-6" O.C.
PERENNIALS						
AM	106	<i>Allium</i> 'Millenium'	MILLENIUM ALLIUM	#1	CONT.	2'-0" O.C.
BA	1	<i>Baptisia australis</i>	FALSE BLUE INDIGO	#1	CONT.	
HH	46	<i>Hemerocallis</i> 'Hyperion'	HYPERION DAYLILY	#1	CONT.	2'-6" O.C.
HS	79	<i>Hemerocallis</i> 'South Seas'	SOUTH SEAS DAYLILY	#1	CONT.	2'-6" O.C.
ORNAMENTAL GRASSES						
MS	175	<i>Miscanthus sinensis</i> 'Purpurescens'	FLAMEGRASS	#1	CONT.	2'-6" O.C.
CA	53	<i>Calamagrostis x acutiflora</i> 'Karl Foerster'	KARL FOERSTER FEATHER REED GRASS	#1	CONT.	2'-6" O.C.
BULBS						
AP	240	<i>Allium</i> 'Purple Sensation'	PURPLE SENSATION ALLIUM		BULB	1'-0" O.C.

**A1
L101 PLANTING PLAN**

Revision#	Description	Date:

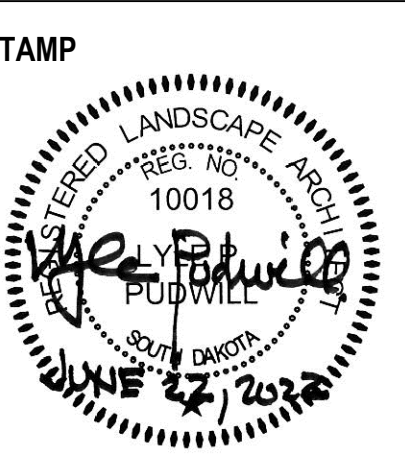
CONSULTANTS

<p>ARCHITECTURAL:</p> <p>BWB</p> <p>390 St. Peter St Suite 600 St. Paul, MN 55102 Phone: 651-222-3701</p>	<p>STRUCTURAL:</p> <p>ERA</p> <p>Ericksen Road Associates 2520 University Ave W Suite 423-S St. Paul, MN 55402 Phone: 651-251-1707</p>	<p>MEP:</p> <p>DUNHAM</p> <p>Dunham Associates, Inc. 51 South Sixth St Suite 1100 Minneapolis, MN 55402 Phone: 612-465-7550</p>	<p>CIVIL:</p> <p>EVS</p> <p>10025 Valley View Rd Suite 140 Eden Prairie, MN 55434 Phone: 952-846-0236</p>	<p>LANDSCAPE ARCHITECTURE:</p> <p>CONFLUENCE</p> <p>CONFLUENCE 440 E 8th Street Suite 121 Sioux Falls, SD 57103 Phone: 605-339-1205</p>
--	---	--	--	--

ARCHITECT OF RECORD

A/E:
Stone Group Architects
600 E 7th Street
Sioux Falls, SD 57103
605-271-1144

STONE GROUP ARCHITECTS



Office of Construction and Facilities Management

VA U.S. Department of Veterans Affairs

Drawing Title
PLANTING PLAN

Approved:

Phase
CONSTRUCTION DOCUMENTS

FOR OFFICIAL USE ONLY

Project Title
NEW FRONT LOBBY AND PRIMARY CARE ADDITION

Location
SIoux FALLS, SOUTH DAKOTA

Issue Date
06/22/2022

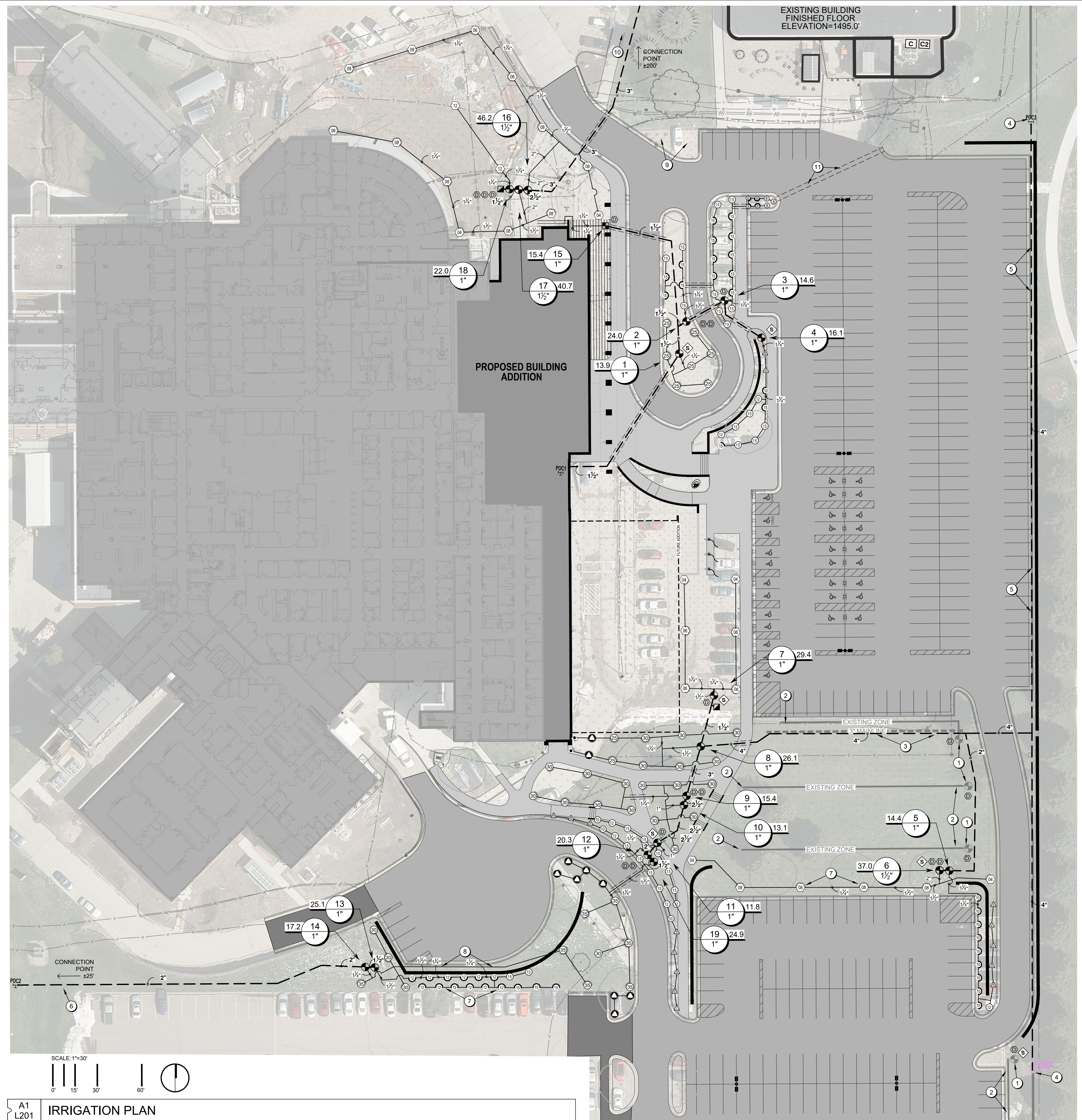
Checked
LP

Drawn
LP

Project Number
VA #438-480
SGA #201909

Building Number
5

Drawing Number
L101



GENERAL NOTES

EXISTING CONDITIONS: EXISTING CITY OF SIOUX FALLS WATER PRESSURE IS ESTIMATED AT 51 PSI AT 1901 S HOLLY AVENUE BASED ON HYDRANT FLOW TEST DATED 1/19/2021 (@140 GPM). PRESSURE OF EXISTING IRRIGATION MAINLINE IS BOOSTED BY PUMP. PUMP INFORMATION IS UNKNOWN. CONTRACTOR TO VERIFY EXISTING PRESSURE AND NOTIFY ARCHITECT OF ANY DISCREPANCIES PRIOR TO CONSTRUCTION.

THE CONTRACTOR IS RESPONSIBLE FOR OBTAINING A COPY OF PLANTING IRRIGATION SPECIFICATIONS (S28400) PRIOR TO BIDDING. THE PROJECT SPECIFICATIONS ARE A PART OF THESE PLANS AND, THE CONTRACTOR IS RESPONSIBLE FOR IMPLEMENTING WORK AS SPECIFIED IN THE PROJECT SPECIFICATIONS AND ON THE PLANS.

ZONE NUMBERS INDICATED ARE FOR COORDINATION PURPOSES ONLY. INCORPORATE NEW ZONES INTO EXISTING CAMPUS ZONE VALVE NUMBERING SYSTEM AND DOCUMENT ON AS BUILT DRAWINGS.

THE CONTRACTOR SHALL BE RESPONSIBLE FOR LOCATING ALL PUBLIC AND PRIVATE UTILITIES WHICH LIE WITHIN THE CONSTRUCTION AREA PRIOR TO ANY CONSTRUCTION. NOTIFY THE ARCHITECT OF ANY DISCREPANCIES.

PROVIDE AND MAINTAIN WARNING SIGNS, BARRICADES AND CONSTRUCTION FENCING AS REQUIRED BY LOCAL AUTHORITIES.

SPRINKLER LOCATIONS ARE TO SCALE. THE CONTRACTOR SHALL FLAG AND APPROVE LOCATIONS WITH ARCHITECT PRIOR TO CONSTRUCTION. PIPE LOCATIONS ARE DIAGMATIC AND IN SOME INSTANCES MAY CONFLICT WITH PAVEMENT OR OTHER CONSTRUCTED FEATURES FOR CLARITY PURPOSES ONLY.

IRRIGATION CONTRACTOR IS RESPONSIBLE FOR COORDINATION AND INSTALLATION OF ALL EQUIPMENT TO PROVIDE A WORKING IRRIGATION SYSTEM FOR THE OWNER. SEE ELECTRICAL AND PLUMBING SHEETS FOR WORK BY OTHERS.

CONTRACTOR TO VERIFY PLUMBING EQUIPMENT (BACKFLOW, ETC) USED WILL MEET DEMANDS OF IRRIGATION AS RECOMMENDED BY MANUFACTURER AND ARE WITHIN TOLERANCES OF SPECIFICATIONS. BACKFLOW DEVICES ARE TO BE INSPECTED BY A CERTIFIED TECHNICIAN WHERE REQUIRED. CONTRACTOR TO COORDINATE ALL INSPECTIONS AS REQUIRED BY CODE.

IRRIGATION EQUIPMENT QUANTITIES ARE FOR INFORMATION ONLY. VERIFY QUANTITIES. DRAWING TO PREVAIL IF DISCREPANCIES OCCUR.

ALL IRRIGATION EQUIPMENT AND PIPING TO BE INSTALLED PER MANUFACTURER RECOMMENDATIONS AS WELL AS ALL FEDERAL, STATE AND LOCAL LAWS AND ORDINANCES THAT MAY APPLY.

ALL PRODUCT SUBSTITUTION REQUESTS ARE TO BE APPROVED BY ADDENDUM PRIOR TO BID.

IRRIGATION SLEEVES SHALL BE SCHEDULE 40 PVC AND INSTALLED BY THE IRRIGATION CONTRACTOR. SLEEVES SHALL BE 2X THE PIPE DIAMETER. SEPARATE SLEEVES ARE REQUIRED FOR CONTROL WIRE. COORDINATE INSTALLATION WITH GENERAL CONTRACTOR. WHERE REQUIRED DIRECTIONAL BORING OF PIPE SLEEVES UNDER CONCRETE SHALL BE INCLUDED AT NO ADDITIONAL COST.

INSTALL LATERAL LINES WITH A MINIMUM COVER OF 24" AND MAINLINES WITH A MINIMUM COVER OF 30".

PVC PIPE 2-1/2" AND LARGER SHALL HAVE GASKETED JOINTS AND COMPLY WITH ASTM D3139 AND ASTM D1784. ALL GASKETED PIPE AND FITTINGS SHALL BE THRUST BLOCKED.

ALL SOLVENT WELDED PIPE AND FITTINGS 3" AND LARGER SHALL BE THRUST BLOCKED.

CONTRACTOR IS RESPONSIBLE FOR DESIGN OF INSTALLATION OF THRUST BLOCKS PER ASABE S376.3 AT ALL TEES, CROSSES, REDUCERS, PLUGS, CAPS AND VALVES. CONSTRUCT OF CAST IN PLACE CONCRETE PLACED ON UNDISTURBED SUBGRADE. WHERE SOIL HAS BEEN DISTURBED COMPACT TO 95% MAX DENSITY IN ACCORDANCE WITH ASTM D698. CONCRETE FOR THRUST BLOCKS SHALL COMPLY WITH ASTM C150, ASTM C33 AND ASTM C94.

JOINT RESTRAINTS MAY BE USED IN PLACE OF CONCRETE THRUST BLOCKS. JOINT RESTRAINT LENGTHS SHALL COMPLY WITH THE EBAA JOINT RESTRAINT CALCULATOR.

ADJUST ALL IRRIGATION HEADS TO PROPER SPRAY DISTRIBUTION. VERIFY NOZZLE INSTALLATION IS PER PLANS.

ADJUST IRRIGATION HEADS AND VALVE BOXES TO FINISHED GRADE. THE CONTRACTOR IS RESPONSIBLE FOR REPAIR OF SETTLING DURING THE WARRANTY PERIOD.

IRRIGATION CONTRACTOR SHALL REVIEW WINTERIZATION PROCEDURES FOR IRRIGATION SYSTEM WITH THE OWNERS REPRESENTATIVE. WINTERIZATION AND SPRING START UP SERVICES DURING THE FIRST YEAR ARE CONSIDERED PART OF THIS CONTRACT ONLY ON IRRIGATION CONNECTED TO THE NEW 2" WATER SOURCE.

AS BUILT DRAWINGS ARE INCLUDED IN THE CONSTRUCTION CONTRACT AND SHALL BE PROVIDED AND APPROVED PRIOR TO FINAL PAYMENT.

2-WIRE SYSTEMS SHALL USE 14-2 CABLE WITH SOLID COPPER CONDUCTORS; INSULATED FOR DIRECT BURIAL AND COMPATIBLE WITH CONTROL SYSTEM SPECIFIED. WIRE SPLICES SHALL BE LOCATED AT VALVE BOXES. ALL CONNECTIONS SHALL BE MADE WITH 3M OEBY WATER TIGHT WIRE CONNECTORS.

USE FLOW MANAGER CAPABILITIES OF THE CONTROLLER TO RUN MULTIPLE ZONES SIMULTANEOUSLY (UP TO TOTAL DESIGN FLOW INDICATED IN CRITICAL ANALYSIS) TO REDUCE THE WATER WINDOW.

NOZZLE SPECIFIED (Q/T/H/F) FOR 5004 MPR HEADS DEFINES DESIRED FLOW, NOT ARC. ADJUST ARC TO REDUCE OVERSPRAY ON WALKS AND BUILDINGS.

WHERE TWO OR MORE 1" ZONE VALVES OCCUR AT ONE LOCATION, GROUP VALVES IN ONE LARGE BOX IN LIEU OF INSTALLING VALVES IN SEPARATE VALVE BOXES.

SET VALVES AND VALVE BOXES TO ALIGN WITH ADJACENT SITE FEATURES (SIDEWALKS, CURBS, ETC), WHERE MULTIPLE VALVE BOXES OCCUR IN A GROUP, ALIGN VALVES AND VALVE BOXES TO BE PARALLEL TO THE ADJACENT VALVE(S) IN THE GROUP.

- # KEYNOTES**
- RESET EXISTING IRRIGATION VALVE IN NEW VALVE BOX DUE TO GRADE CHANGE. PROVIDE 2-WIRE DECODER AND CONNECTION TO NEW IRRIGATION CONTROLS.
 - RESET EXISTING IRRIGATION HEADS DUE TO GRADE CHANGE. CAP WEST END OF IRRIGATION ZONES WHERE DISTURBED BY CONSTRUCTION.
 - USE SEGMENT OF EXISTING MAINLINE AT CONTRACTOR'S OPTION.
 - CONNECT TO EXISTING 4" MAINLINE.
 - REPLACE EXISTING 4" MAINLINE BETWEEN BACK OF CURB AND FACE OF WALL. COORDINATE INSTALLATION WITH WALL CONTRACTOR. INVESTIGATE EXISTING IRRIGATION ZONES SOUTH OF CONSTRUCTION LIMITS AND PROVIDE NEW CONTROL WIRE TO ANY ZONES UNAFFECTED BY CONSTRUCTION TO REMAIN ON EXISTING CONTROLLER.
 - CONNECT TO EXISTING 3" MAINLINE. CONNECT CONTROL WIRE FOR VALVES 13 & 14 TO EXISTING CONTROLLER LOCATED NEAR MAINLINE CONNECTION. CONTROLLER TYPE IS UNKNOWN.
 - IRRIGATION HEADS TO BE LOCATED 18" OFF BACK OF CURB. ADJUST ARC TO IRRIGATE ADJACENT TO CURB TO THE GREATEST EXTENT POSSIBLE.
 - IRRIGATION PIPE SHOWN THROUGH RETAINING WALL FOR CLARITY ONLY.
 - ADJUST EXISTING IRRIGATION DUE TO RELOCATION OF DRIVE AND REMOVAL OF EXISTING LANDSCAPE ROCK. INCLUDE ADDITIONAL IRRIGATION HEADS, MATCH EXISTING TYPE.
 - CONNECT TO EXISTING 4" IRRIGATION MAINLINE (PRESSURE BOOSTED) AT THE NW CORNER OF THE EXISTING BUILDING.
 - SLEEVE FOR CONTROL CABLE FOR ZONES 1, 2, 3, 4, 5, 16, 17 & 18 TO NEW 2-WIRE CONTROLLER.

SCALE: 1"=30'

A1
L201 IRRIGATION PLAN

Revision#	Description	Date:

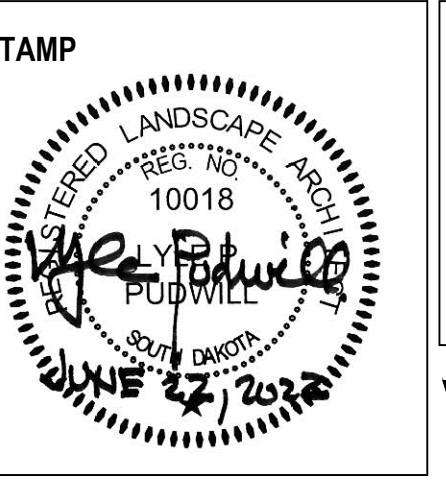
CONSULTANTS

ARCHITECTURAL: BWB 390 St. Peter St Suite 600 St. Paul, MN 55102 Phone: 651-222-3701	STRUCTURAL: ERA Erickson Road Associates 2520 University Ave W Suite 423-S St. Paul, MN 55402 Phone: 651-231-1701	MEP: DUNHAM Dunham Associates, Inc. 51 South Sixth St Suite 1100 Minneapolis, MN 55402 Phone: 612-465-7550	CIVIL: EVS 10025 Valley View Rd Suite 140 Eden Prairie, MN 55344 Phone: 952-846-0236	LANDSCAPE ARCHITECTURE: CONFLUENCE 440 E 8th Street Suite 121 Sioux Falls, SD 57103 Phone: 605-339-1205
--	--	---	--	---

ARCHITECT OF RECORD

A/E:
Stone Group Architects
600 E 7th Street
Sioux Falls, SD 57103
605-271-1144

STONE GROUP ARCHITECTS



Office of
Construction
and Facilities
Management

VA U.S. Department of Veterans Affairs

Drawing Title IRRIGATION PLAN
Approved:

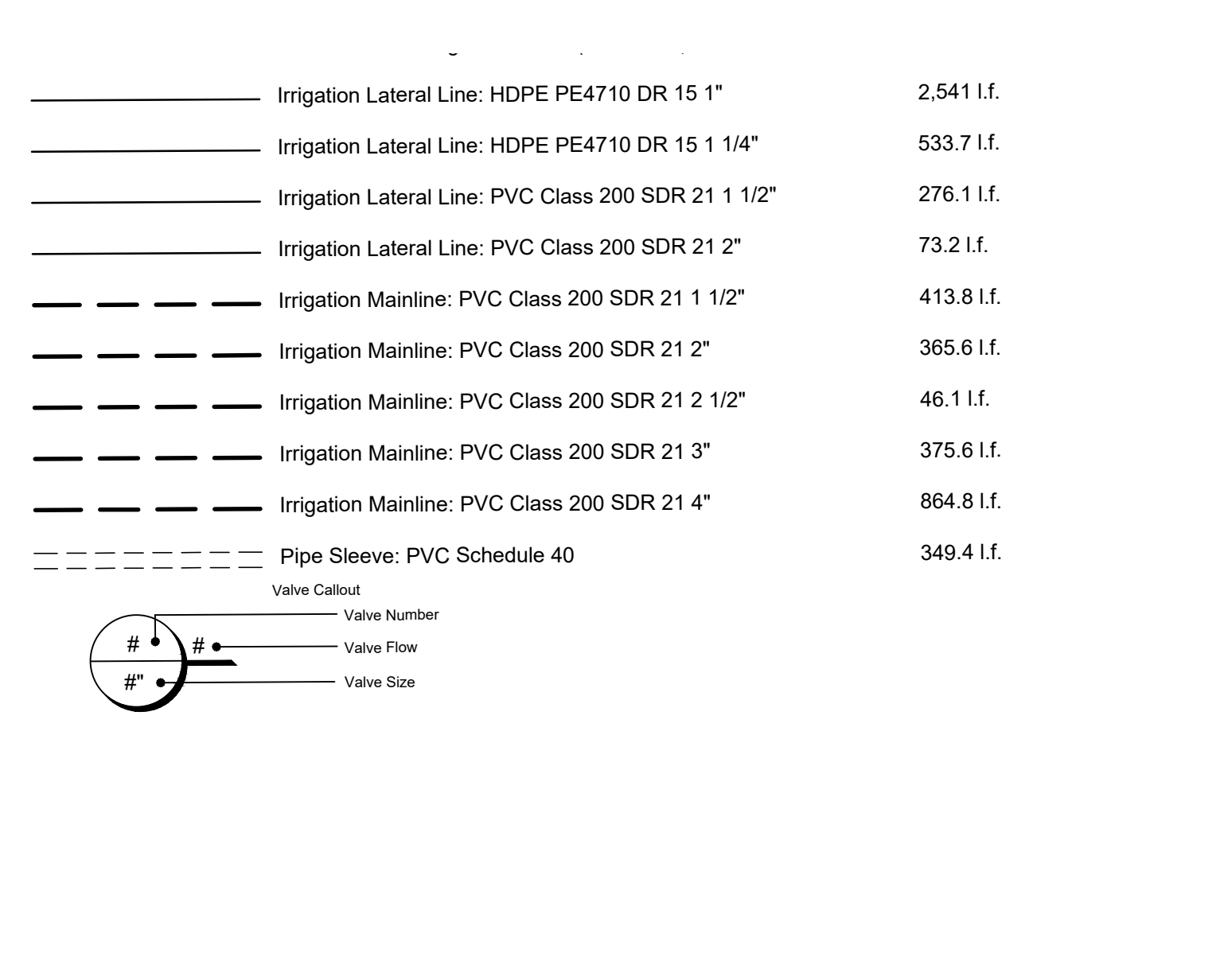
Phase
CONSTRUCTION DOCUMENTS

FOR OFFICIAL USE ONLY

Project Title NEW FRONT LOBBY AND PRIMARY CARE ADDITION	Project Number VA #438-480 SGA #201909
Location SIOUX FALLS, SOUTH DAKOTA	Building Number 5
Issue Date 06/22/2022	Checked LP
Drawn LP	Drawing Number L201

IRRIGATION SCHEDULE

SYMBOL	MANUFACTURER/MODEL/DESCRIPTION	QTY	PSI
EST LCS CST SST	Rain Bird 1804-U-SAM-PRS 15 Strip Series Turf Spray 4" Pop-Up Sprinkler, 1/2" NPT Female Threaded Inlet, With Seal-A-Matic Check Valve, Pressure Regulating.	15	30
10 11 12	Rain Bird 1804-U-SAM-PRS U8 Series Turf Spray 4" Pop-Up Sprinkler, 1/2" NPT Female Threaded Inlet, With Seal-A-Matic Check Valve, Pressure Regulating.	4	30
10 11 12	Rain Bird 1804-U-SAM-PRS U10 Series Turf Spray 4" Pop-Up Sprinkler, 1/2" NPT Female Threaded Inlet, With Seal-A-Matic Check Valve, Pressure Regulating.	10	30
12 13 14 15 16	Rain Bird 1804-U-SAM-PRS U12 Series Turf Spray 4" Pop-Up Sprinkler, 1/2" NPT Female Threaded Inlet, With Seal-A-Matic Check Valve, Pressure Regulating.	12	30
13 14 15 16 17 18	Rain Bird 1804-U-SAM-PRS U15 Series Turf Spray 4" Pop-Up Sprinkler, 1/2" NPT Female Threaded Inlet, With Seal-A-Matic Check Valve, Pressure Regulating.	18	30
10HE-VAN 12SHE-VAN 10HE-VAN 12SHE-VAN	Rain Bird 1804-U-SAM-PRS HE-VAN Series Turf Rotary 4" Pop-Up Sprinkler, 1/2" NPT Female Threaded Inlet, With Seal-A-Matic Check Valve, Pressure Regulating.	38	30
14.8DU 11F	Rain Bird R-VAN14 1804-SAM-P45 Turf Rotary, 9-14 45-270 degrees and 360 degrees. Hand Adjustable Multi-Stream Rotary w/1800 turf spray body on 4" pop-up, with check valve and 45 psi in-stem pressure regulator, 1/2" NPT Female Threaded Inlet.	2	45
10 11 12	Rain Bird R-VAN18 1804-SAM-P45 Turf Rotary, 13-18 45-270 degrees and 360 degrees. Hand Adjustable Multi-Stream Rotary w/1800 turf spray body on 4" pop-up, with check valve and 45 psi in-stem pressure regulator, 1/2" NPT Female Threaded Inlet.	10	45



SYMBOL	MANUFACTURER/MODEL/DESCRIPTION	QTY	PSI	GPM	RADIUS
25	Rain Bird 5004-R-PC-FC-MPR Turf Rotor, 4" Pop-Up, Plastic Riser, Matched Precipitation Rotor (MPR nozzle), Arc and Radius as per Symbol, 25 ft red, 30 ft green, 35ft=beige. Pressure Regulating.	9	45		22'
30	Rain Bird 5004-R-PC-FC-MPR Turf Rotor, 4" Pop-Up, Plastic Riser, Matched Precipitation Rotor (MPR nozzle), Arc and Radius as per Symbol, 25 ft red, 30 ft green, 35ft=beige. Pressure Regulating.	23	45		27'
35	Rain Bird 5004-R-PC-FC-MPR Turf Rotor, 4" Pop-Up, Plastic Riser, Matched Precipitation Rotor (MPR nozzle), Arc and Radius as per Symbol, 25 ft red, 30 ft green, 35ft=beige. Pressure Regulating.	7	45		31'
44	Rain Bird F4-PC, FC Turf Rotor, 4.0" Pop-Up, Plastic Riser, Adjustable and Full Circle, With Removable Seal-A-Matic Check Valve, 1" Female Threaded Inlet.	6	50	3.70	36'
46	Rain Bird F4-PC, FC Turf Rotor, 4.0" Pop-Up, Plastic Riser, Adjustable and Full Circle, With Removable Seal-A-Matic Check Valve, 1" Female Threaded Inlet.	5	50	5.50	44'
48	Rain Bird F4-PC, FC Turf Rotor, 4.0" Pop-Up, Plastic Riser, Adjustable and Full Circle, With Removable Seal-A-Matic Check Valve, 1" Female Threaded Inlet.	14	50	7.40	45'
42	Rain Bird F4-PC, FC Turf Rotor, 4.0" Pop-Up, Plastic Riser, Adjustable and Full Circle, With Removable Seal-A-Matic Check Valve, 1" Female Threaded Inlet.	2	50	11.0	49'



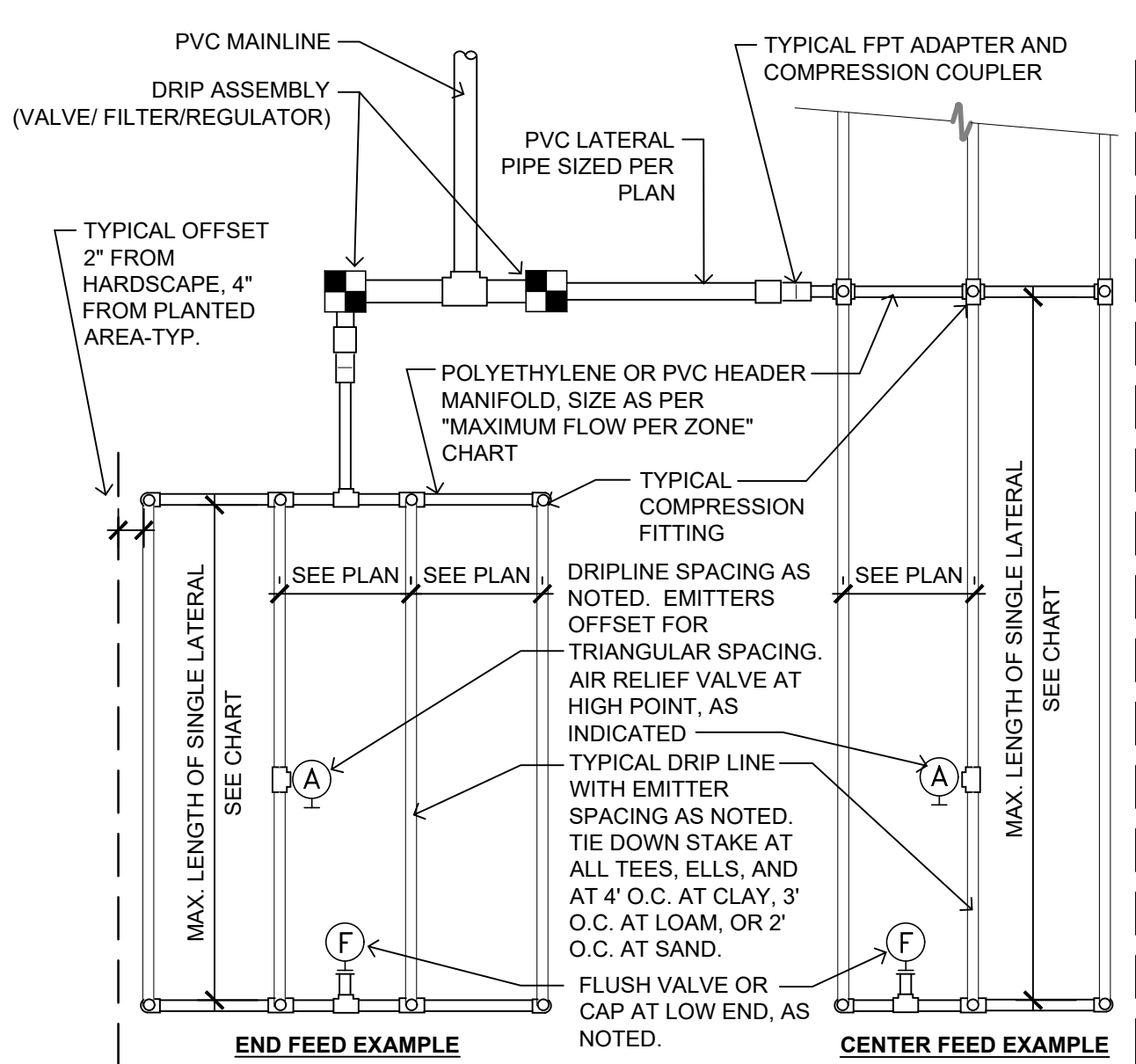
SYMBOL	MANUFACTURER/MODEL/DESCRIPTION	QTY
1	Rain Bird XCZ-100-PRB-LC 1" Wide Flow Drip Control Kit, 1" PEB Valve, with 1" Pressure Regulating Basket Filter, 0.3-20 GPM.	1
1,543 L.F.	Area to Receive Dripline Rain Bird XFD-06-12 XFD On-Surface Pressure Compensating Landscape Dripline, 0.6 GPM emitters at 12" O.C. Dripline laterals spaced at 12" apart, with emitters offset for triangular pattern. UV Resistant. Specify XF insert fittings.	
15	Rain Bird PGA Globe 1" 1", 1-1/2", 2" Electric Remote Control Valve, Globe.	
3	Rain Bird PGA Globe 1-1/2" 1", 1-1/2", 2" Electric Remote Control Valve, Globe.	
2	Rain Bird 44-LRC 1" 1" Brass Quick-Coupling Valve, with Corrosion-Resistant Stainless Steel Spring, Locking Thermoplastic Rubber Cover, and 2-Piece Body.	
1	Existing Rain Bird ESP-LXME Existing outdoor controller. 16 zones are currently in use on two ESP-LXMS modules. Add decoders and convert all existing irrigation zones disturbed by construction to the new 2-wire controller. Existing zones NOT affected by construction may remain on existing controller.	
1	Rain Bird ESP-LXD 50 Station, 2-Wire Decoder based Controller, Plastic Wall-Mount Enclosure. System Requirements: Rain Bird FD-XXX-TURF Field Decoders, Page Electric Cable P770ZD & Rain Bird WC20 Dry Splices ONLY. Ground System w/ LSP-1TURF Line Surge Protectors. Install Per Manufacturers Written Instruction.	
19	Rain Bird FD-101TURF Field Decoder for Two-Wire system. Install in valve box for valve. Operates one valve/solenoid. Use line surge protection as per manufacturer's directions.	
6	Rain Bird LSP-1TURF Line surge protection decoder directly to the ground rod or ground plate	
1	Point of Connection 2"	
1	Point of Connection 3"	
1	Point of Connection 4"	
1	Point of Connection 4"	

VALVE SCHEDULE

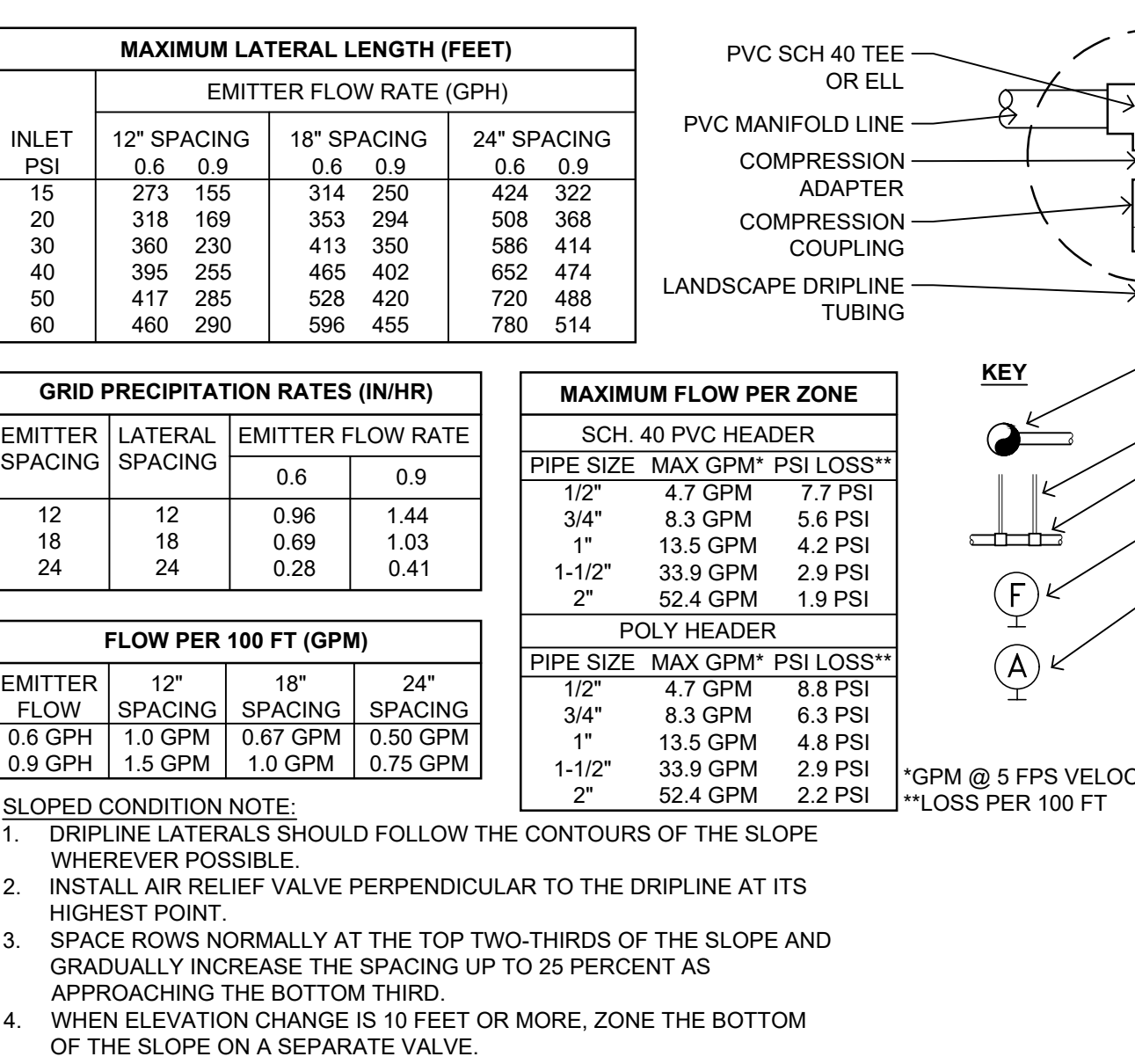
NUMBER	MODEL	SIZE	TYPE	GPM	PSI	PSI @ POC	PRECIIP
1	Rain Bird PGA Globe	1"	Turf Rotor	13.90	51.3	51.91	0.86 in/h
2	Rain Bird PGA Globe	1"	Turf Spray	24.03	37.9	39.96	1.19 in/h
3	Rain Bird PGA Globe	1"	Turf Spray	14.60	37.35	38.25	1.13 in/h
4	Rain Bird PGA Globe	1"	Turf Spray	16.07	36.91	38.2	1.64 in/h
5	Rain Bird PGA Globe	1"	Turf Spray	14.38	38.72	39.53	1.21 in/h
6	Rain Bird PGA Globe	1-1/2"	Turf Rotor	37.00	56.12	60.96	0.96 in/h
7	Rain Bird PGA Globe	1"	Turf Rotor	29.40	57.8	63.71	0.72 in/h
8	Rain Bird PGA Globe	1"	Turf Rotor	26.12	52.23	56.51	0.84 in/h
9	Rain Bird PGA Globe	1"	Turf Rotor	15.38	52.15	53.93	0.99 in/h
10	Rain Bird PGA Globe	1"	Turf Rotor	13.08	51.67	53	0.85 in/h
11	Rain Bird PGA Globe	1"	Turf Spray	11.81	36.42	37.63	1.0 in/h
12	Rain Bird PGA Globe	1"	Turf Spray	20.31	37.75	41.12	1.27 in/h
13	Rain Bird PGA Globe	1"	Turf Spray	25.11	38.55	41.57	1.86 in/h
14	Rain Bird PGA Globe	1"	Turf Rotor	17.19	53.85	55.31	0.87 in/h
15	Rain Bird PGA Globe	1-1/2"	Turf Rotor	15.42	47.15	48.48	0.96 in/h
16	Rain Bird PGA Globe	1"	Turf Rotor	46.20	58.14	62.39	0.81 in/h
17	Rain Bird PGA Globe	1-1/2"	Turf Rotor	40.70	56.71	60.12	0.76 in/h
18	Rain Bird PGA Globe	1"	Turf Rotor	22.00	58.21	59.36	0.46 in/h
19	Rain Bird PGA Globe	1"	Turf Rotary	24.88	53.41	58.4	0.86 in/h
Unknown	Cap from existing system		Cap (as indicated for future use)	0.00			Unknown



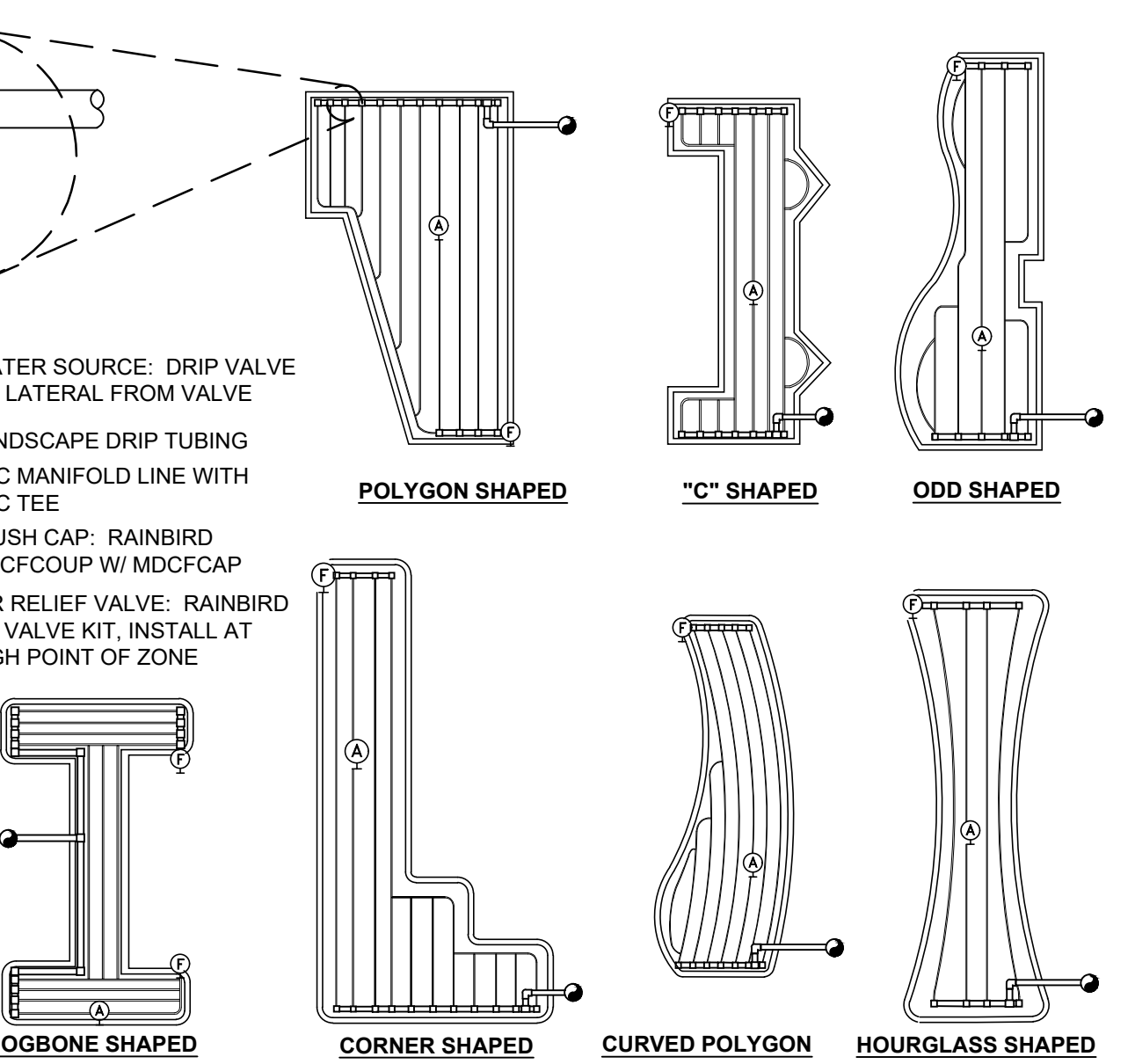
5 QUICK COUPLING VALVE ASSEMBLY N.T.S.



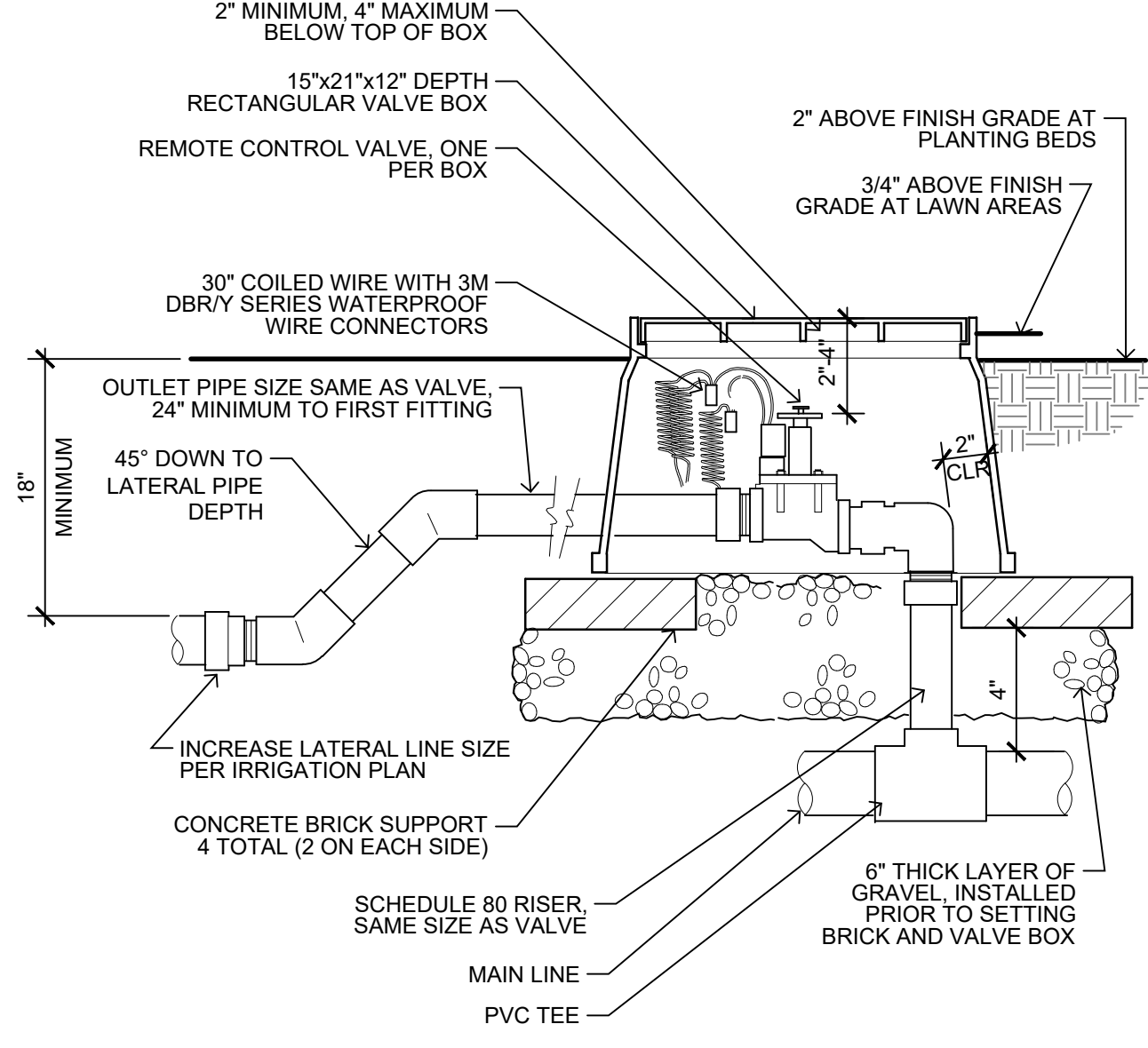
6 DRIP FLUSH ASSEMBLY N.T.S.



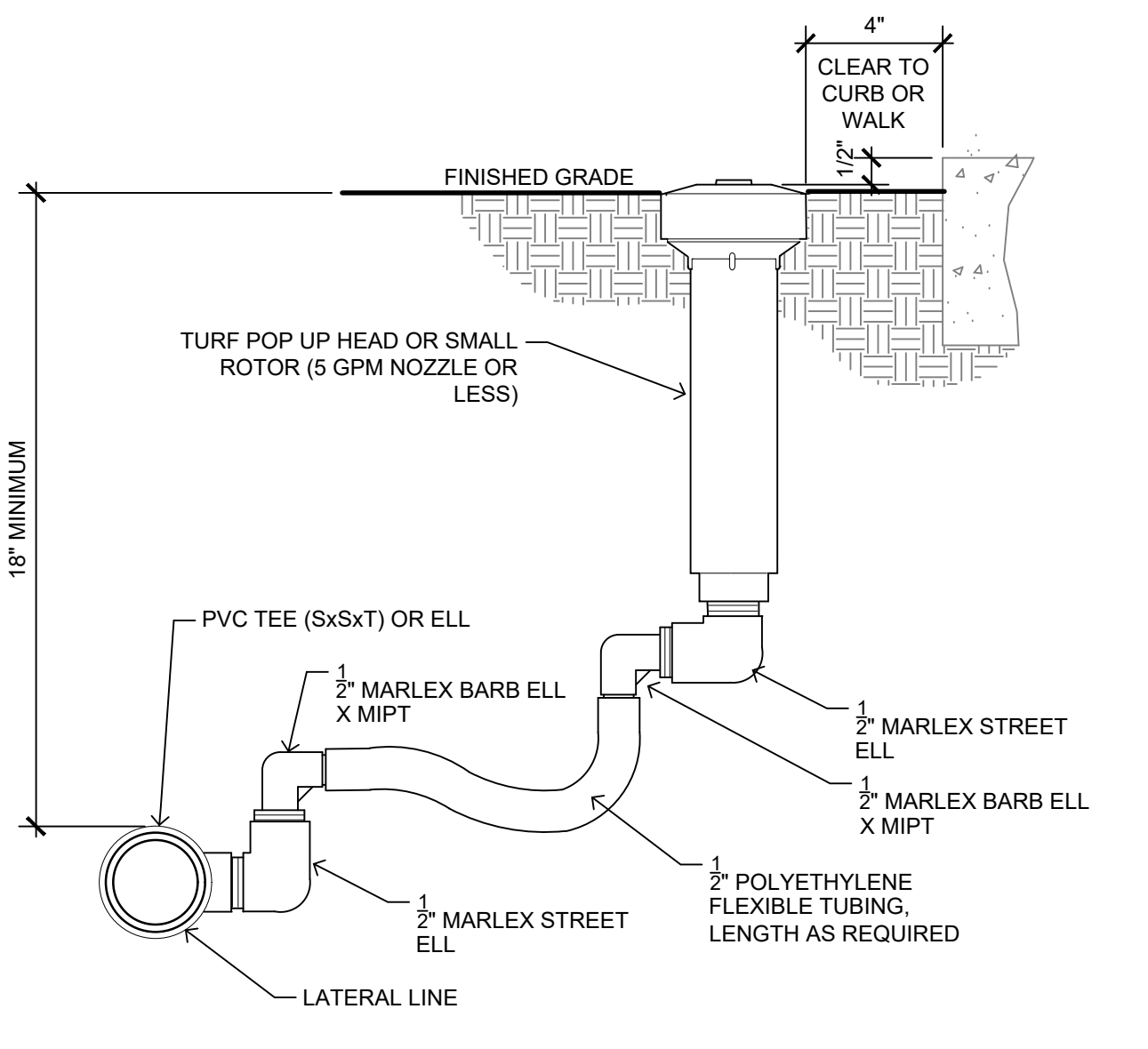
7 DRIP VALVE N.T.S.



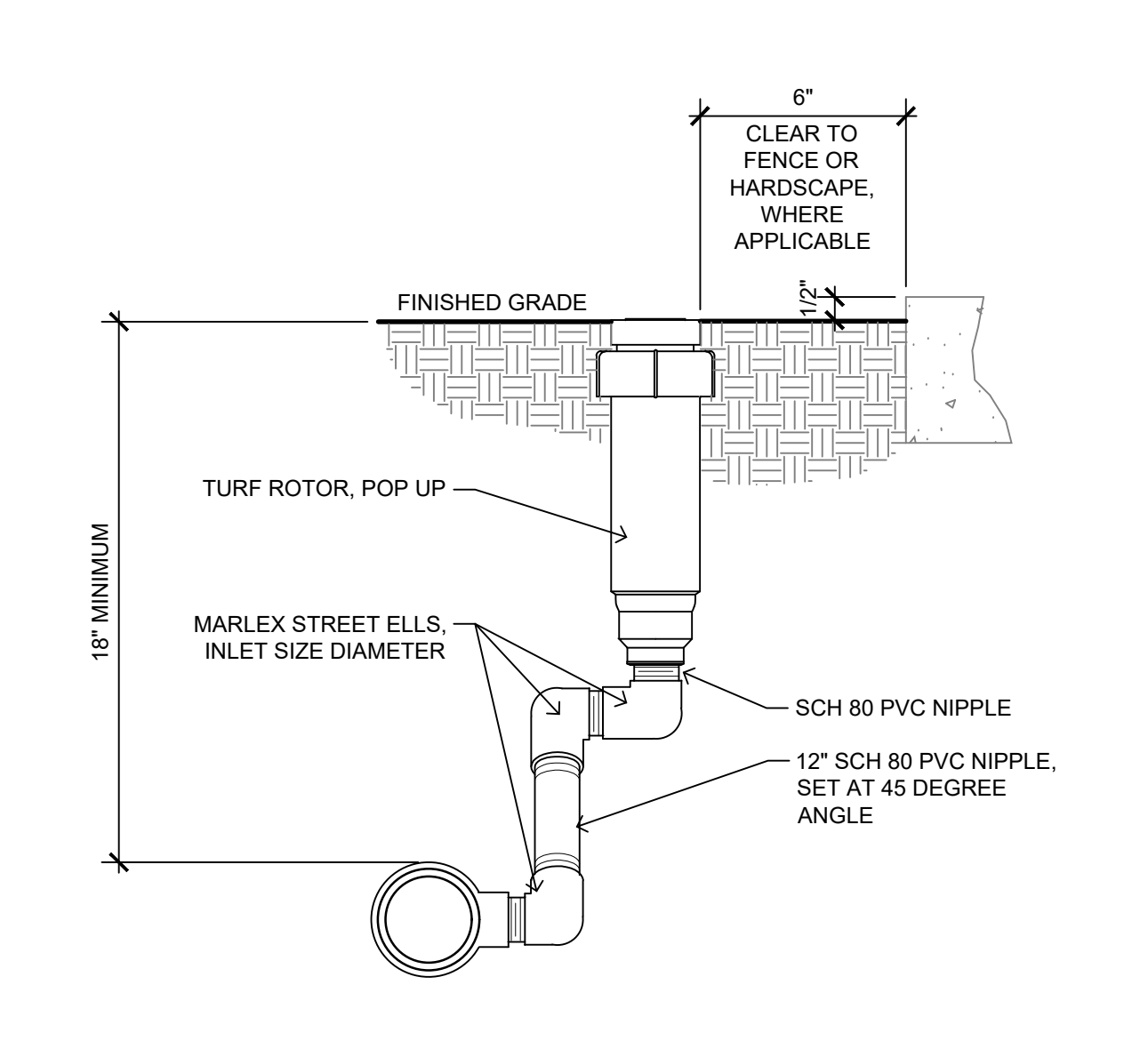
4 TYPICAL DRIPLINE REQUIREMENTS: RAINBIRD N.T.S.



1 CONTROL VALVE ASSEMBLY N.T.S.



2 SPRAY | SMALL ROTOR | ROTARY N.T.S.



3 6500 SERIES ROTOR N.T.S.



Revision#	Description	Date:

CONSULTANTS

ARCHITECTURAL: BWB BWBR 380 St. Peter St Suite 600 St. Paul, MN 55102 Phone: 651-221-3701	STRUCTURAL: ERA ERIC ROSS ASSOCIATES 2520 University Ave W Suite 423-S St. Paul, MN 55402 Phone: 651-231-1700	MEP: DUNHAM DUNHAM ASSOCIATES, INC. Suite 1100 Minneapolis, MN 55402 Phone: 612-465-7550	CIVIL: EVS EVS ENGINEERS 10025 Valley View Rd Suite 140 Eden Prairie, MN 55344 Phone: 952-946-0266	LANDSCAPE ARCHITECTURE: CONFLUENCE CONFLUENCE 440 E 8th Street Suite 121 Sioux Falls, SD 57103 Phone: 605-339-1205
---	---	---	--	--

ARCHITECT OF RECORD

A/E:
Stone Group Architects
 600 E 7th Street
 Sioux Falls, SD 57103
 605-271-1144

Office of Construction and Facilities Management

U.S. Department of Veterans Affairs

Drawing Title
IRRIGATION SCHEDULE AND DETAILS

Approved: _____

Phase
CONSTRUCTION DOCUMENTS

FOR OFFICIAL USE ONLY

Project Title
NEW FRONT LOBBY AND PRIMARY CARE ADDITION

Location
SIoux FALLS, SOUTH DAKOTA

Issue Date
 06/22/2022

Checked
 LP

Drawn
 LP

Project Number
 VA #438-480
 SGA #201909

Building Number
 5

Drawing Number
L202

A

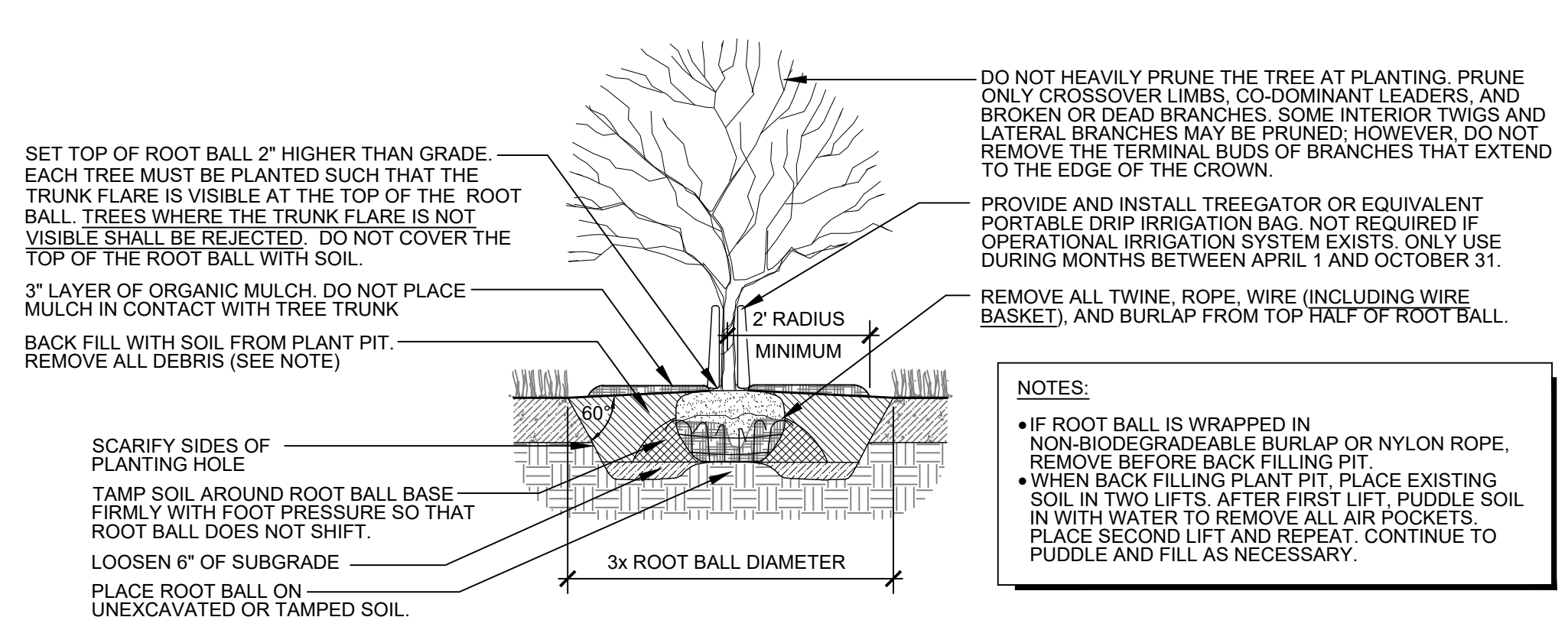
B

C

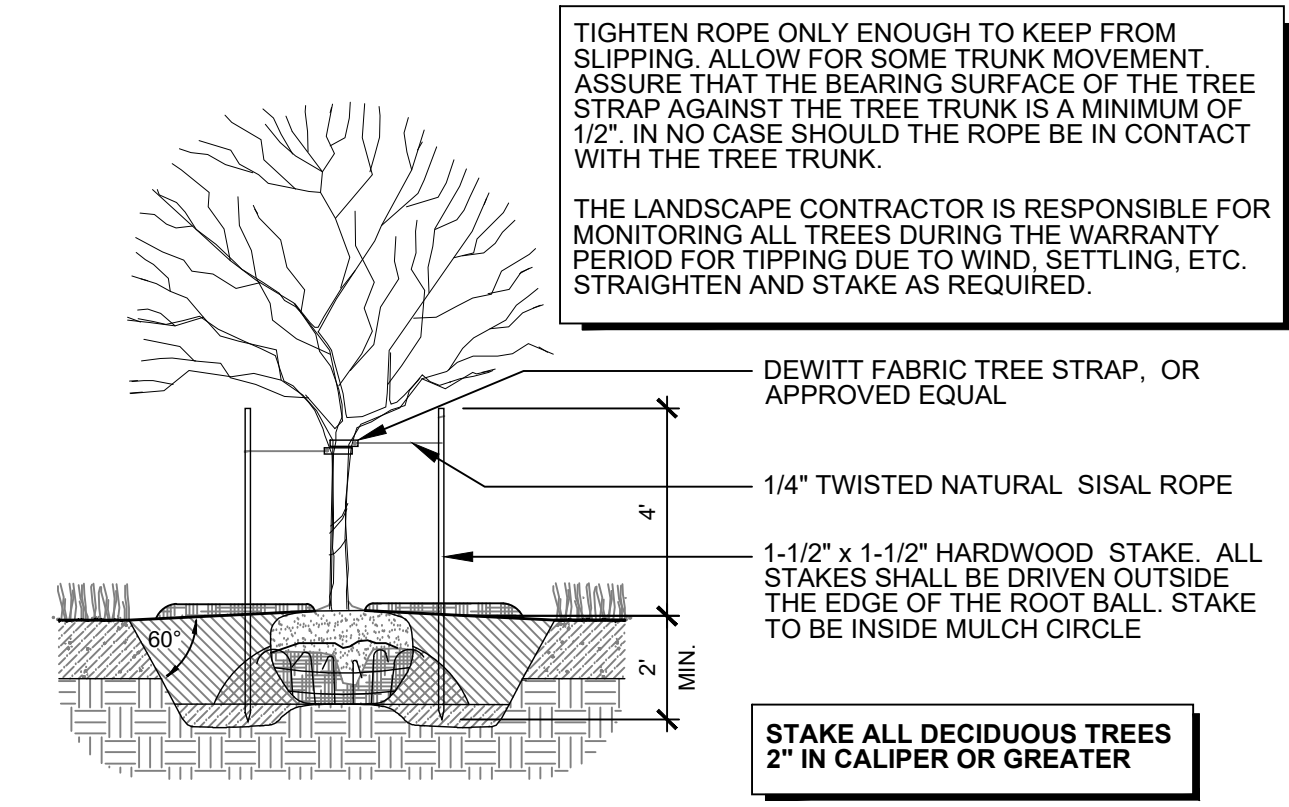
D

E

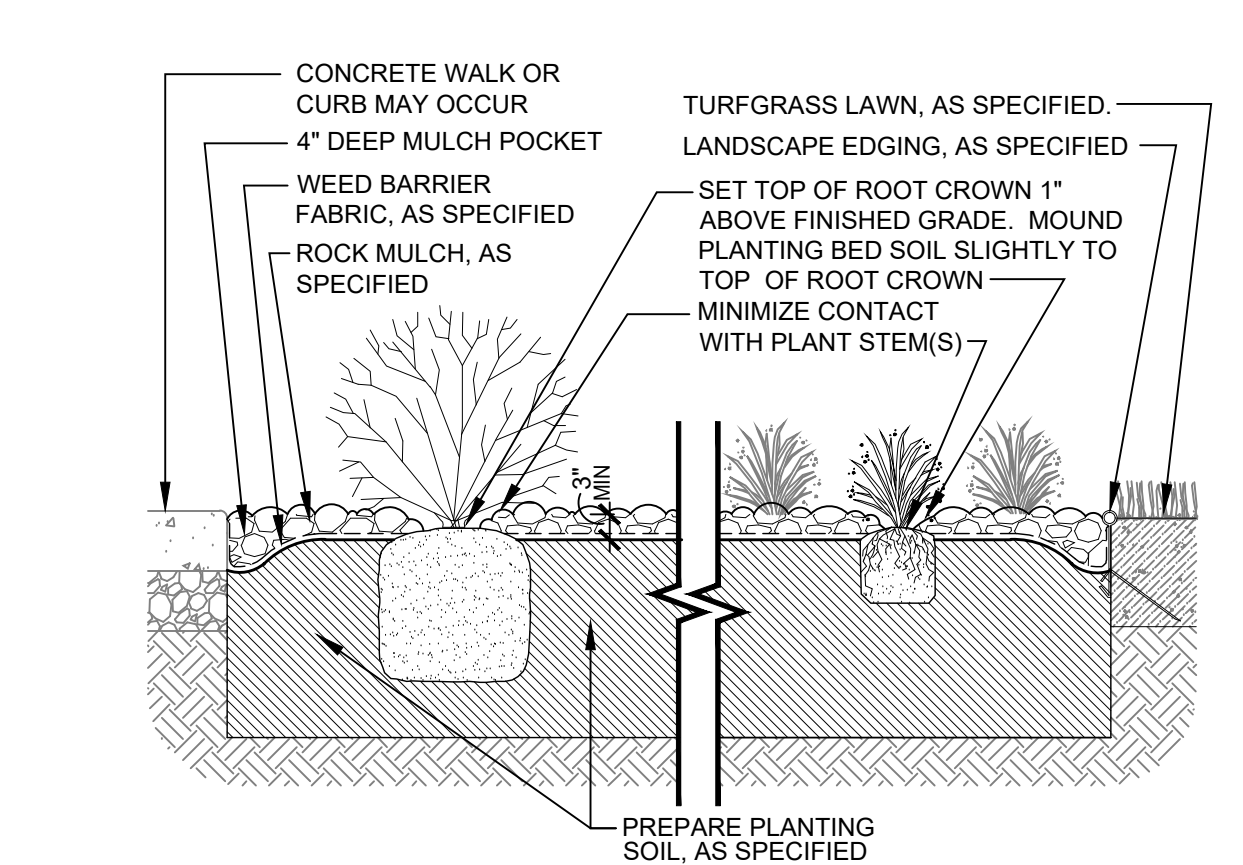
F



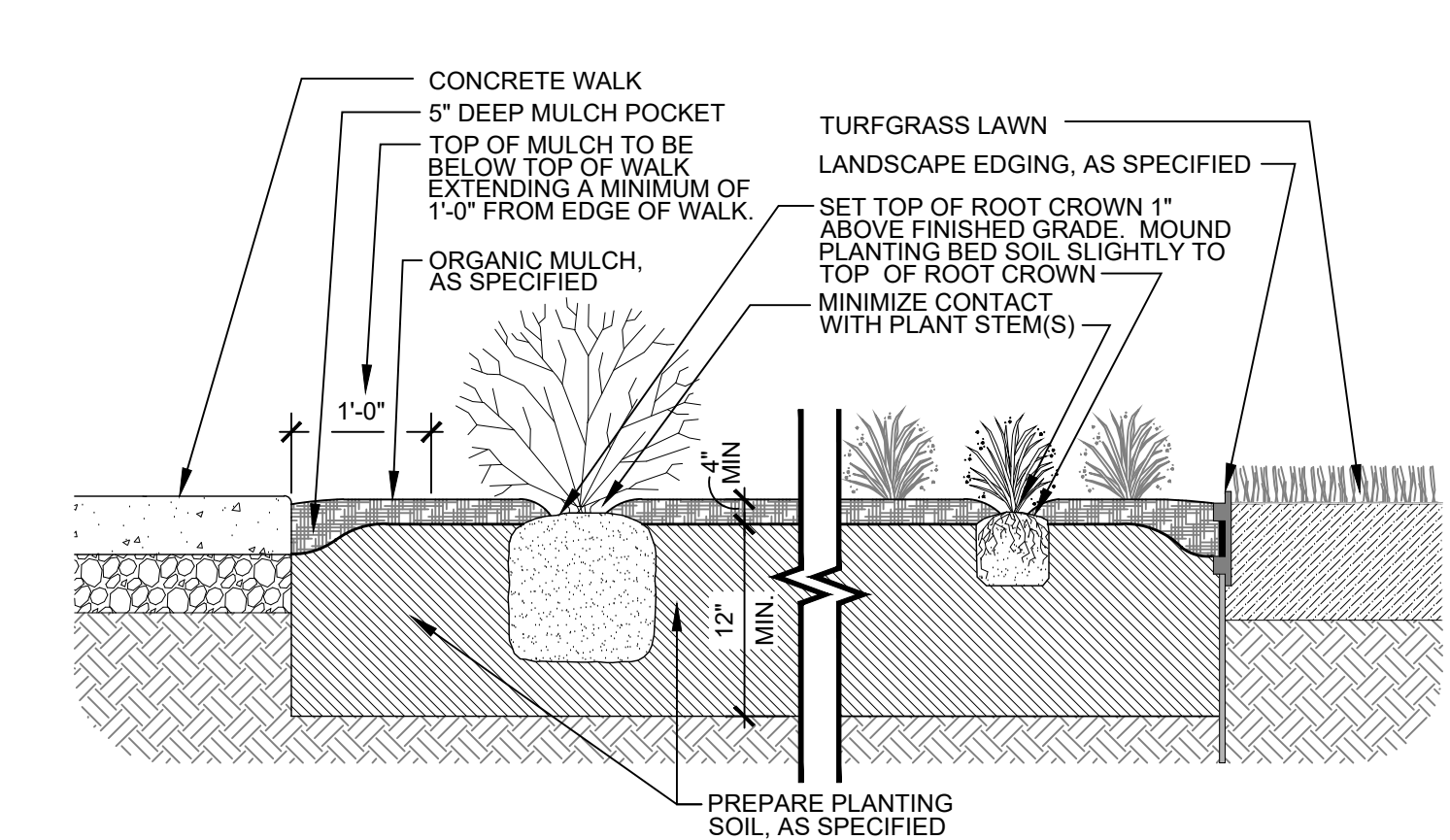
B1 L501 B&B TREE PLANTING SCALE: 3/4"=1'-0"



B3 L501 TREE STAKING SCALE: 3/4"=1'-0"



A1 L501 PLANT BEDS (ROCK MULCH) SCALE: 3/4"=1'-0"

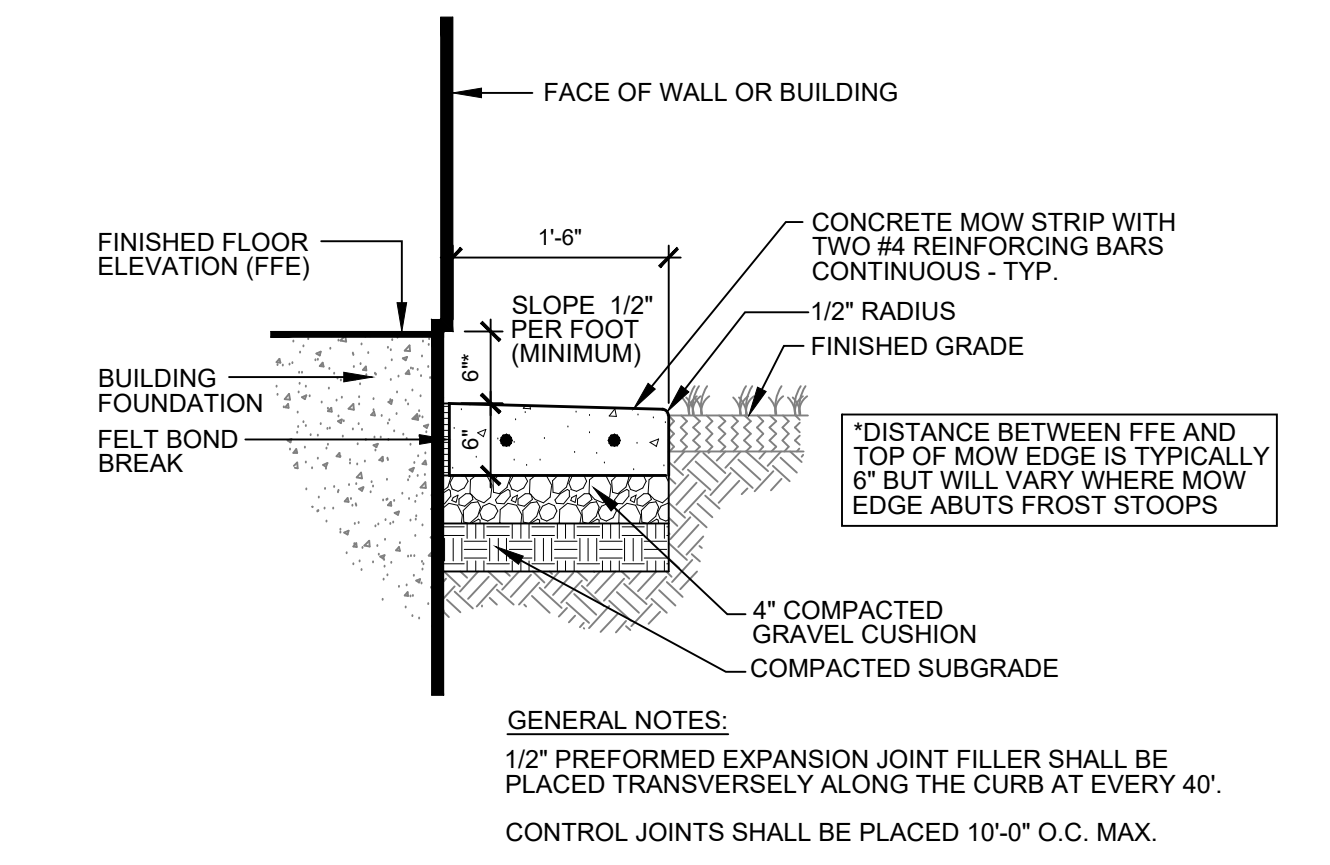


A2 L501 PLANT BEDS (ORGANIC MULCH) N.T.S.

EDGE OF PLANTING AREA

TRIANGULAR SPACING - 'S'	DISTANCE BETWEEN ROWS - 'D'	TOTAL AREA PER PLANT (SF)
12"	10-1/2"	0.88
15"	13"	1.35
18"	15-1/2"	1.94
21"	18"	2.63
24" (2)	21"	3.50
30"	26"	5.42
36" (3)	31"	7.75
42"	36"	10.50

A3 L501 PLANT SPACING N.T.S.



A4 L501 CONCRETE MOW EDGE SCALE: 3/4" = 1'-0"

Revision#	Description	Date:

CONSULTANTS

ARCHITECTURAL: **BWB** BWR 330 St. Peter St Suite 600 St. Paul, MN 55102 Phone: 651-222-3701

STRUCTURAL: **ERA** ERICKSON ROAD ASSOCIATES 2520 University Ave W Suite 423-S St. Paul, MN 55402 Phone: 651-251-1701

MEP: **DUNHAM** DUNHAM ASSOCIATES, INC. 51 South Sixth St Suite 1100 Minneapolis, MN 55402 Phone: 612-465-7550

CIVIL: **EVS** ENVIRONMENTAL VISIONS 10025 Valley View Rd Suite 140 Eden Prairie, MN 55344 Phone: 952-646-0226

LANDSCAPE ARCHITECTURE: **CONFLUENCE** CONFLUENCE 440 E. 8th Street Suite 121 Sioux Falls, SD 57103 Phone: 605-339-1205

ARCHITECT OF RECORD

A/E: **Stone Group Architects** 600 E 7th Street Sioux Falls, SD 57103 605-271-1144

STONE GROUP ARCHITECTS

STAMP

LANDSCAPE ARCHITECT

10018

06/22/2022

Office of Construction and Facilities Management

VA U.S. Department of Veterans Affairs

Drawing Title: **PLANTING DETAILS**

Approved: _____

Phase: **CONSTRUCTION DOCUMENTS**

FOR OFFICIAL USE ONLY

Project Title: **NEW FRONT LOBBY AND PRIMARY CARE ADDITION**

Location: **SIoux FALLS, SOUTH DAKOTA**

Issue Date: 06/22/2022

Checked: LP

Drawn: LP

Project Number: **VA #438-480 SGA #201909**

Building Number: **5**

Drawing Number: **L501**